



Compensated Neutron
Gamma Ray
Casing Collar Log

Company	Caerus Piceance LLC.	Country	USA
Well	BJU B26 Fed 12B-26-496		
Field	Grand Valley		
County	Garfield		
State	Colorado		
Location:	SEC 26 TWP 4S RGE 96W	API # : 05-045-24433	Other Services RCBL
Permanent Datum	Ground Level	Elevation	8211'
Log Measured From	Kelly Bushing		
Drilling Measured From	Kelly Bushing		
		Elevation	K.B. 8241' D.F. 8240' G.L. 8211'

Date	11-OCT-2022
Run Number	One
Depth Driller	11857 FT
Depth Logger	11745 FT
Bottom Logged Interval	11742 FT
Top Log Interval	7300 FT
Open Hole Size	8.750"
Type Fluid	Fresh Water
Density / Viscosity	8.34 lb/gal
Max. Recorded Temp.	---
Estimated Cement Top	---
Time Well Ready	ROA
Time Logger on Bottom	18.15
Equipment Number	8053
Location	Grand Junction Colo
Recorded By	P. Edwards
Witnessed By	Z. Fisher

Borehole Record				Tubing Record			
Run Number	Bit	From	To	Size	Weight	From	To
	8.75"	Surface	11857 FT				
Casing Record	Size		Mgt/ft		Top		Bottom
Surface String	9.625"		36		Surface		3023.1 FT
Prot. String	4.5"		11.6		Surface		11838 FT
Production String							
Liner							

<<< Fold Here >>>

All interpretations are opinions based on inferences from electrical or other measurements and we cannot and do not guarantee the accuracy or correctness of any interpretation, and we shall not, except in the case of gross or willful negligence on our part, be liable or responsible for any loss, costs, damages, or expenses incurred or sustained by anyone resulting from any interpretation made by any of our officers, agents or employees. These interpretations are also subject to our general terms and conditions set out in our current Price Schedule.

Comments

Log ran as per customer request.
Depth referenced to Kelly Bushing @ 30FT
Marker Joint from 7729 FT - 7739 FT
Log ran from 11742 FT to 7300FT
Log ran with 0 PSI surface induced pressure.

Thank you for choosing The Wireline Group!!!

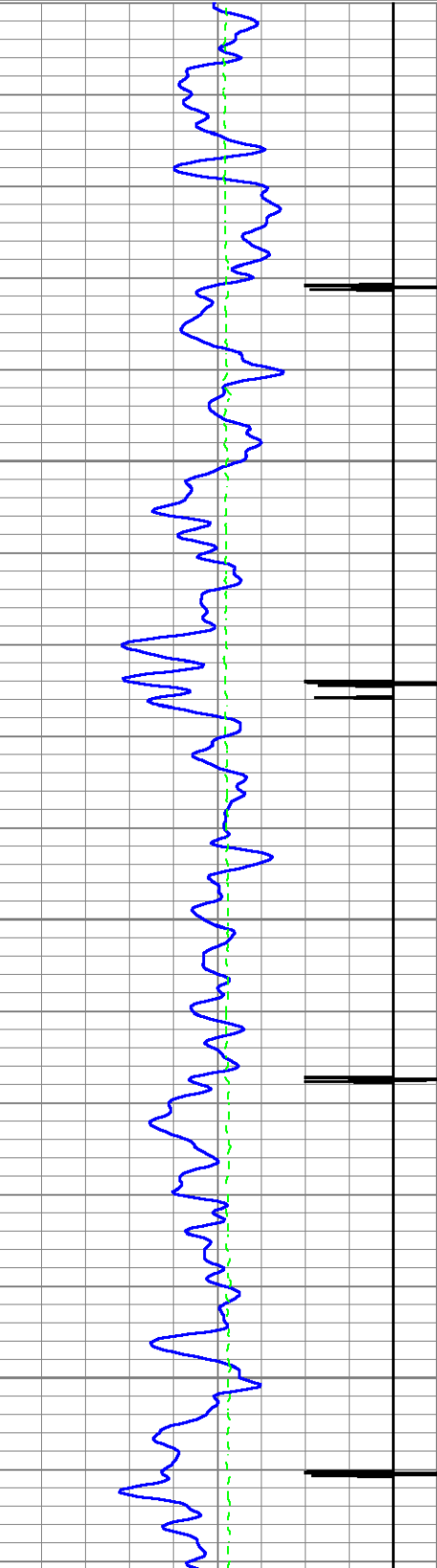


Main Pass 5" = 100'

Database File caerus_bju b26 fed 12b-26-496_rcbl_cnl_10-10-2022.db
Dataset Pathname main
Presentation Format twgcnl
Dataset Creation Tue Oct 11 18:15:13 2022
Charted by Depth in Feet scaled 1:240

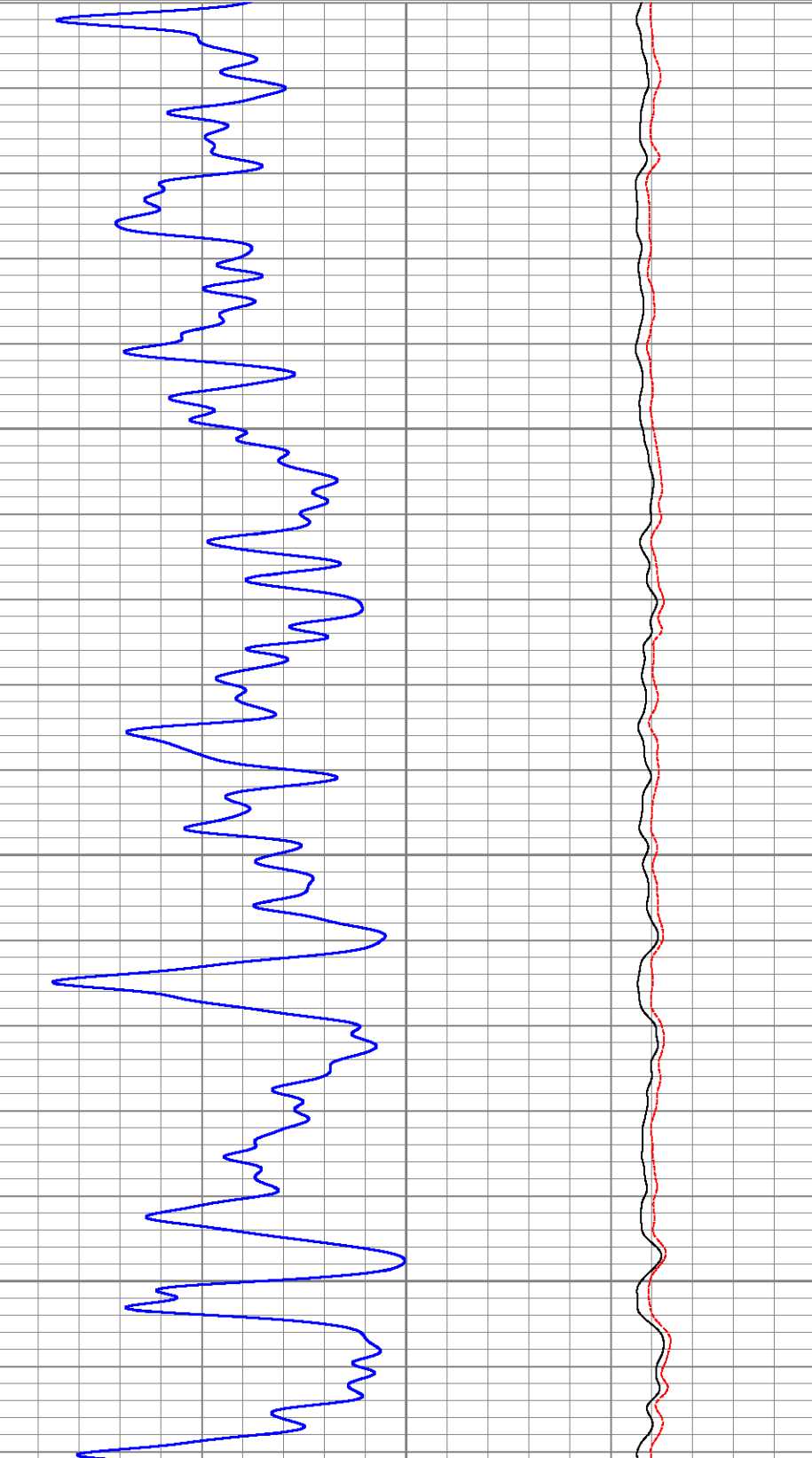
0	GR (GAPI)	200
-9	CCL	1
0	Line Tension (lb)	3000

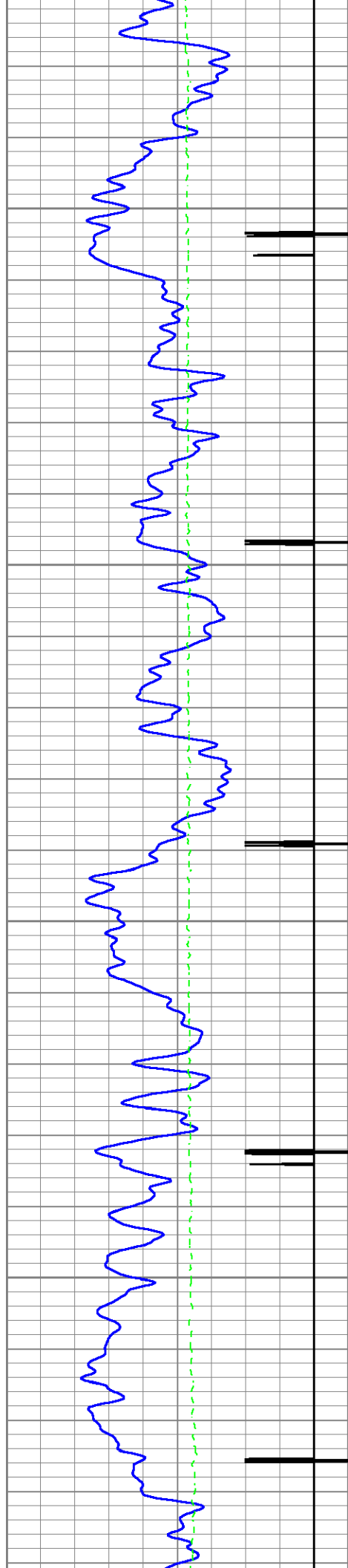
0.3	CNPOR (pu)	-0.1
0	CNLSC (cps)	1500
0	CNSSC (cps)	7000



7300

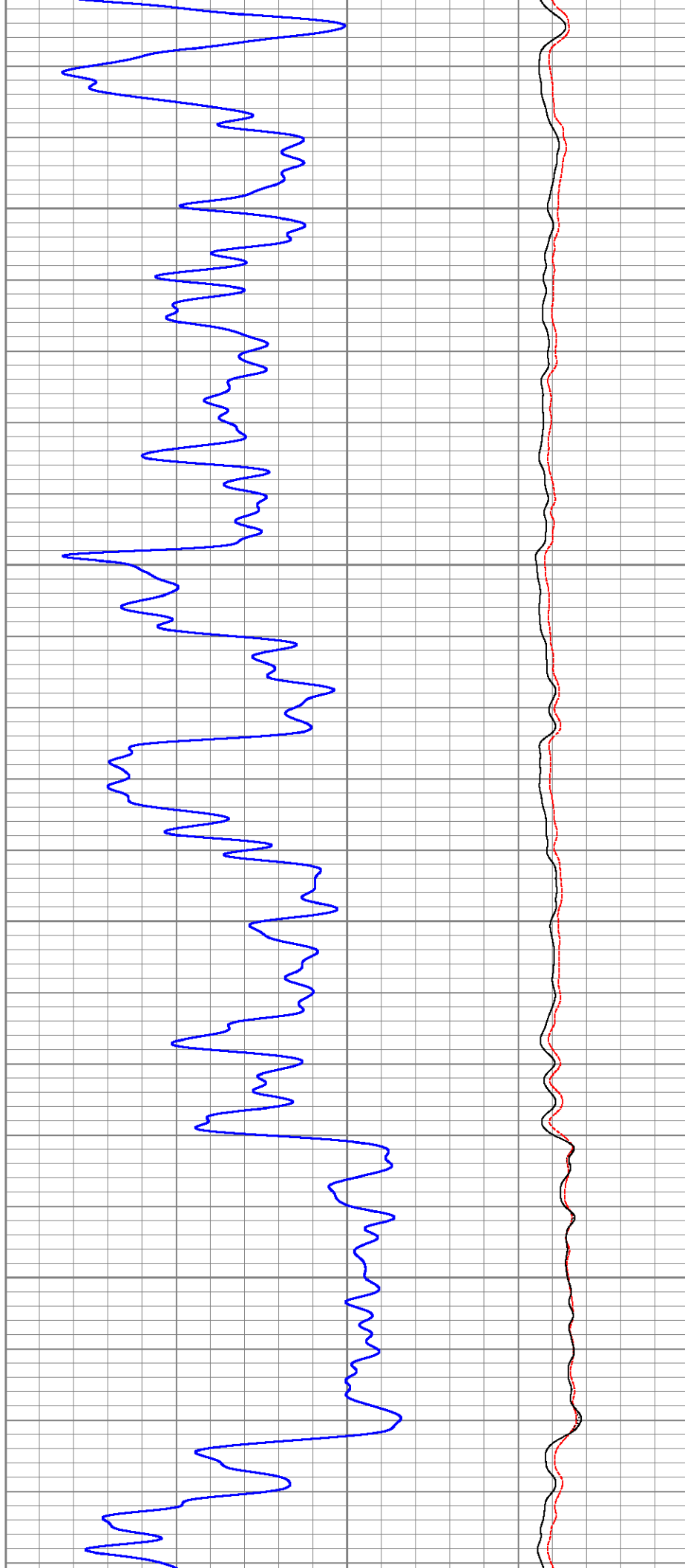
7400

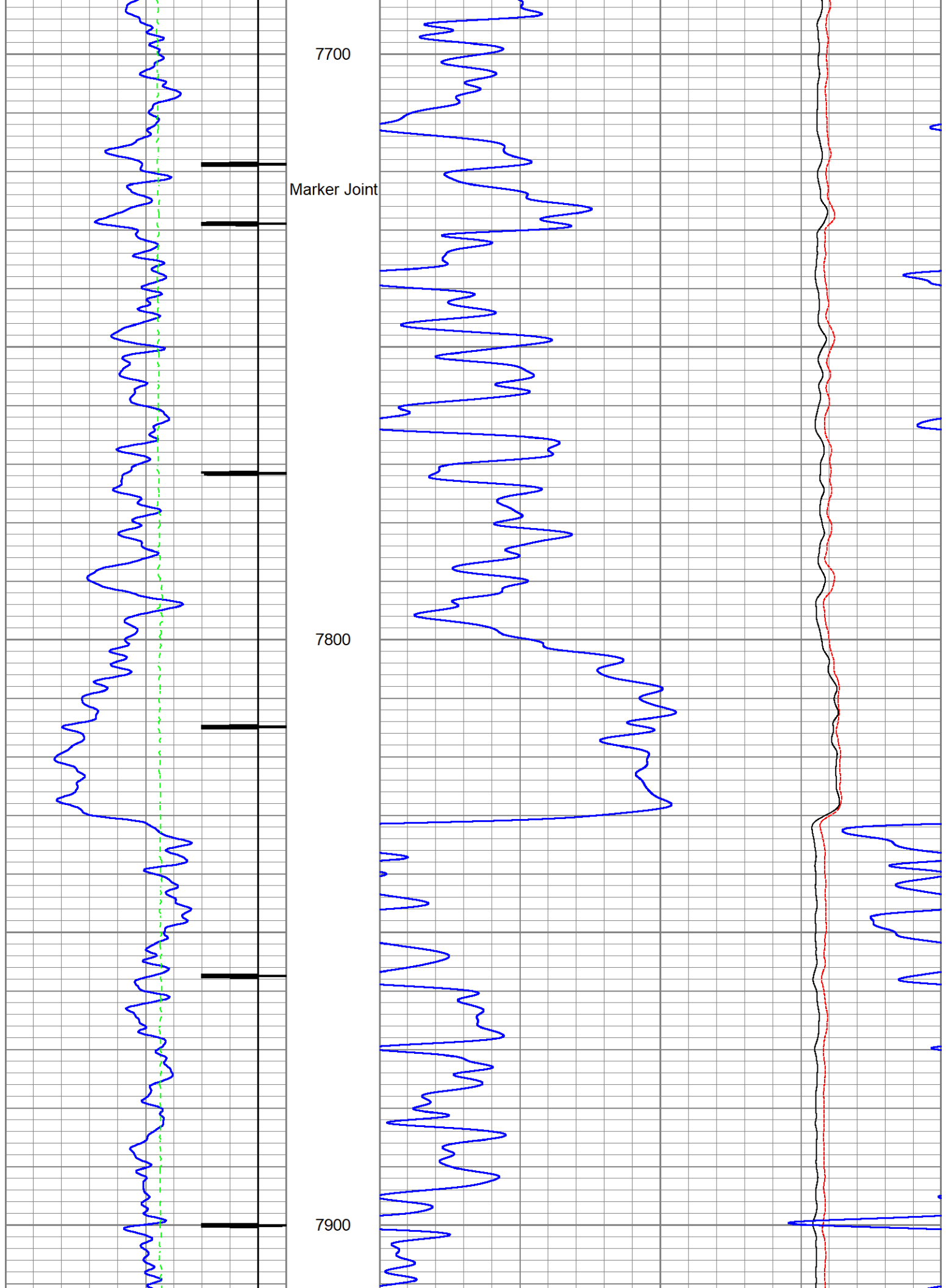


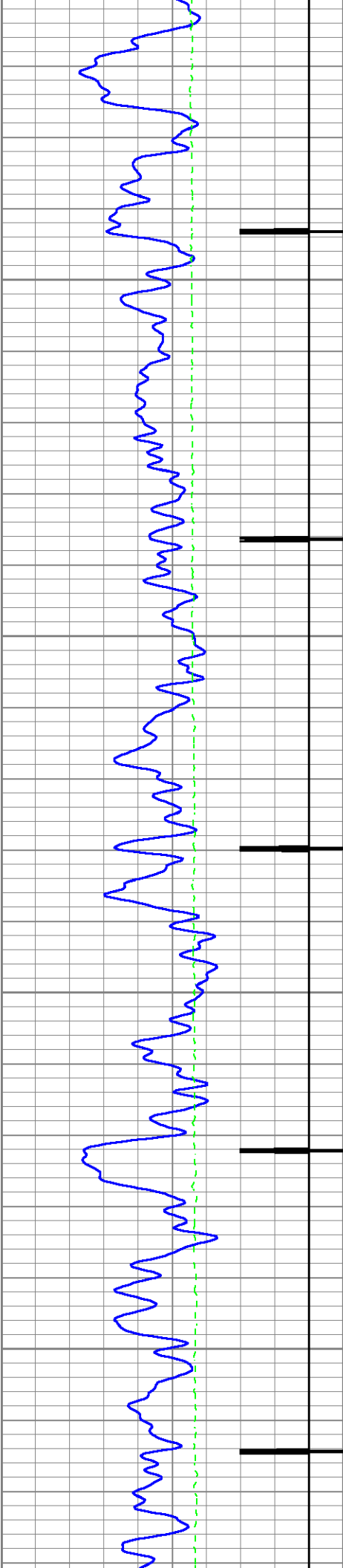


7500

7600

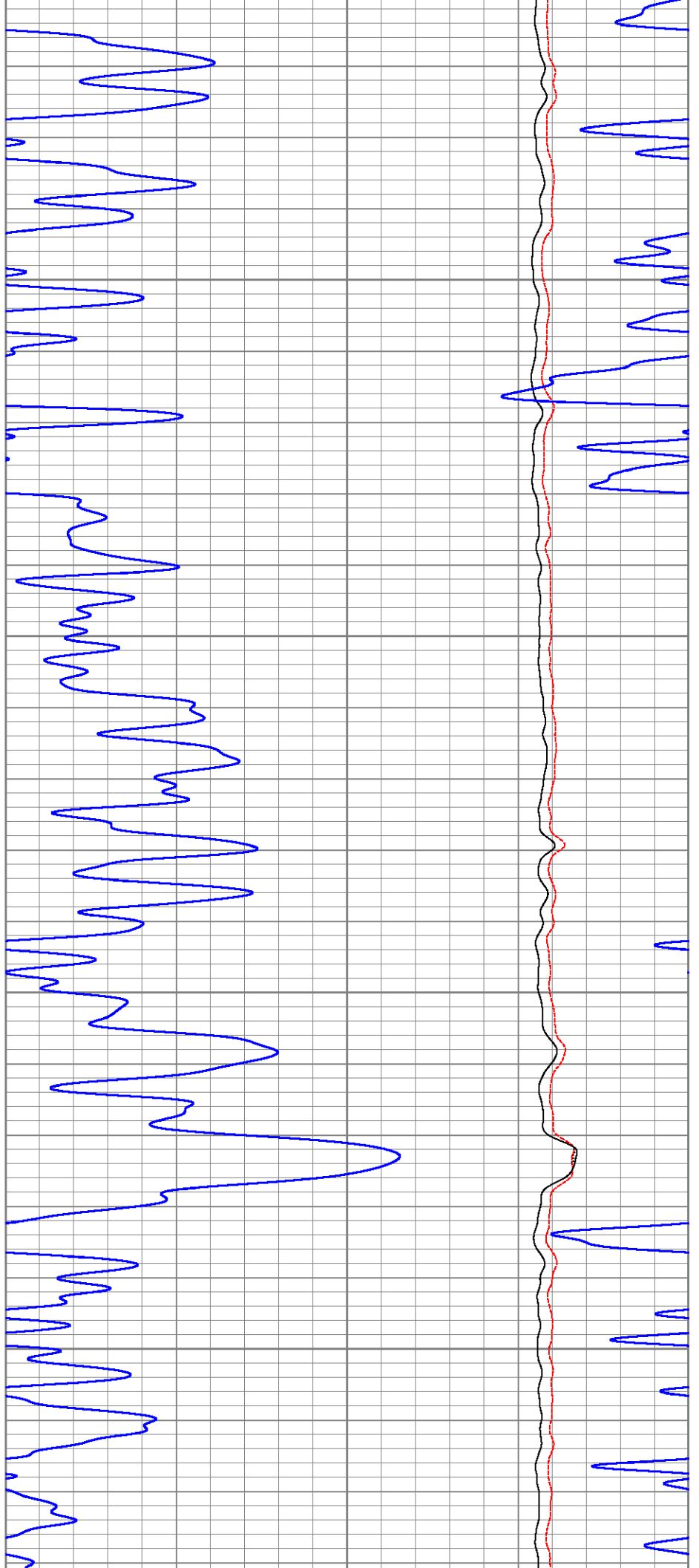


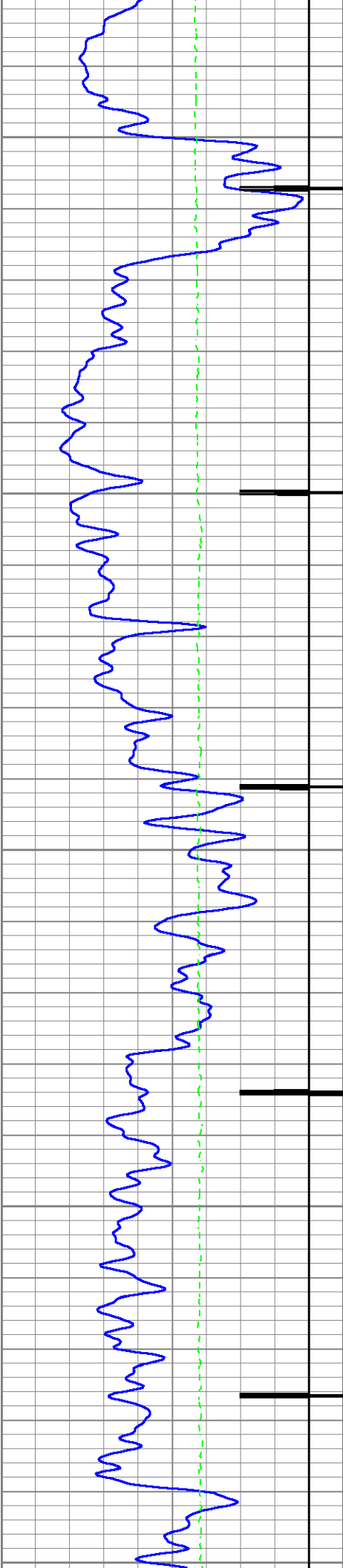




8000

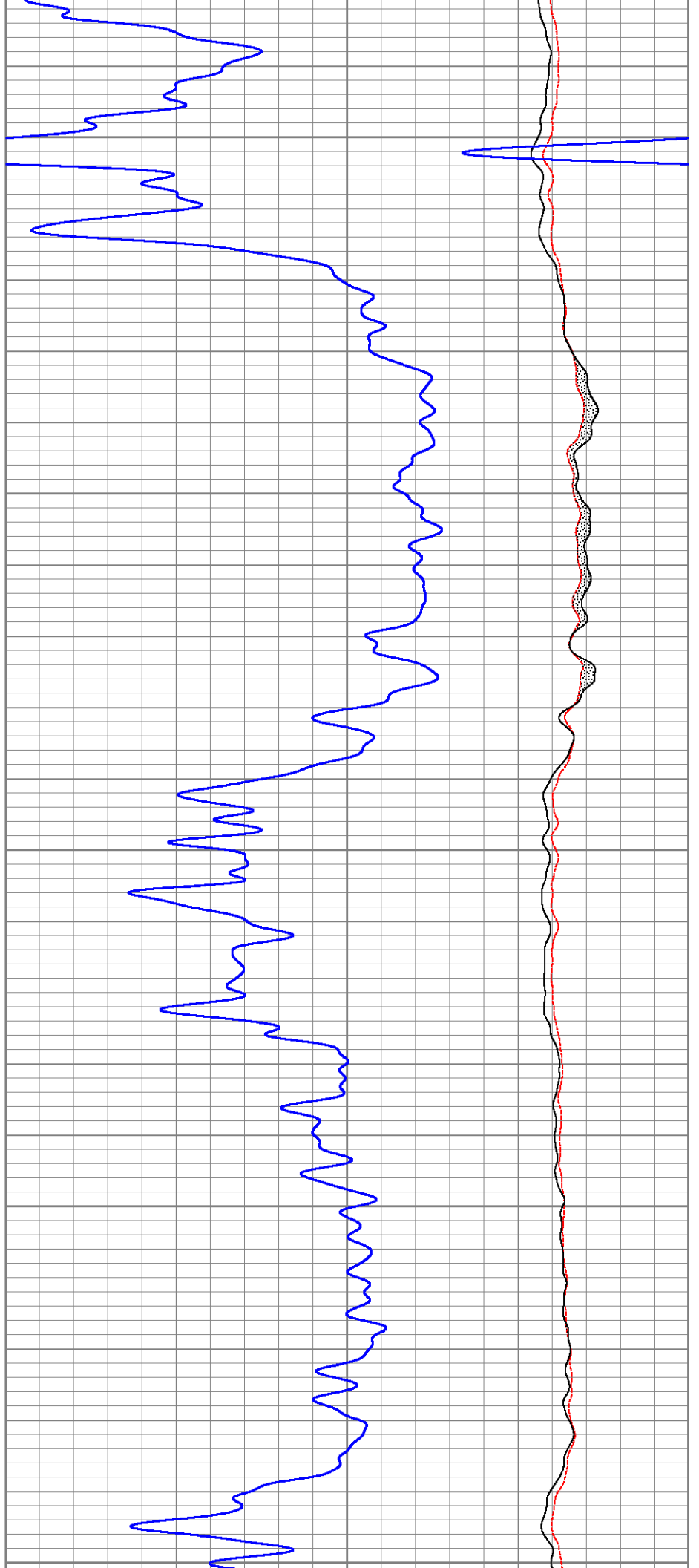
8100

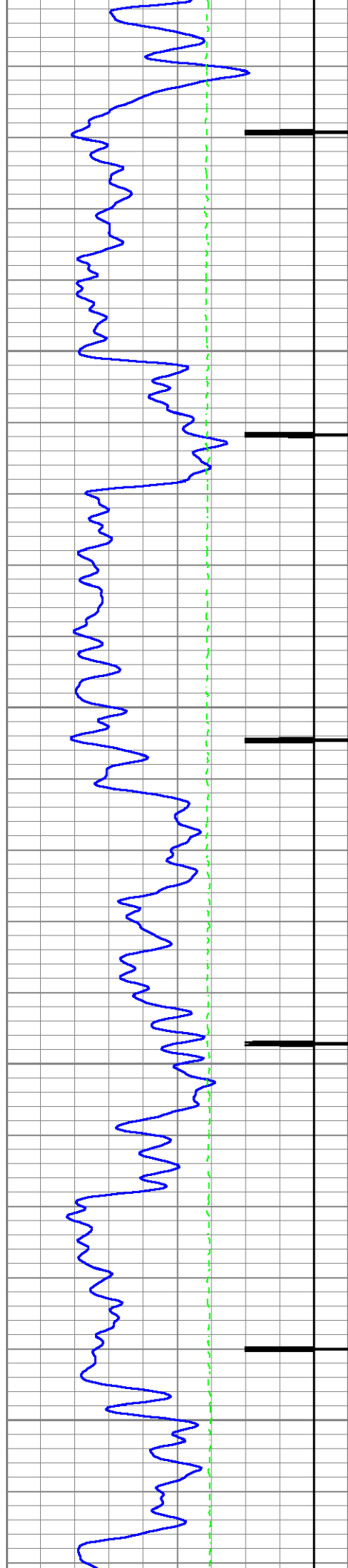




8200

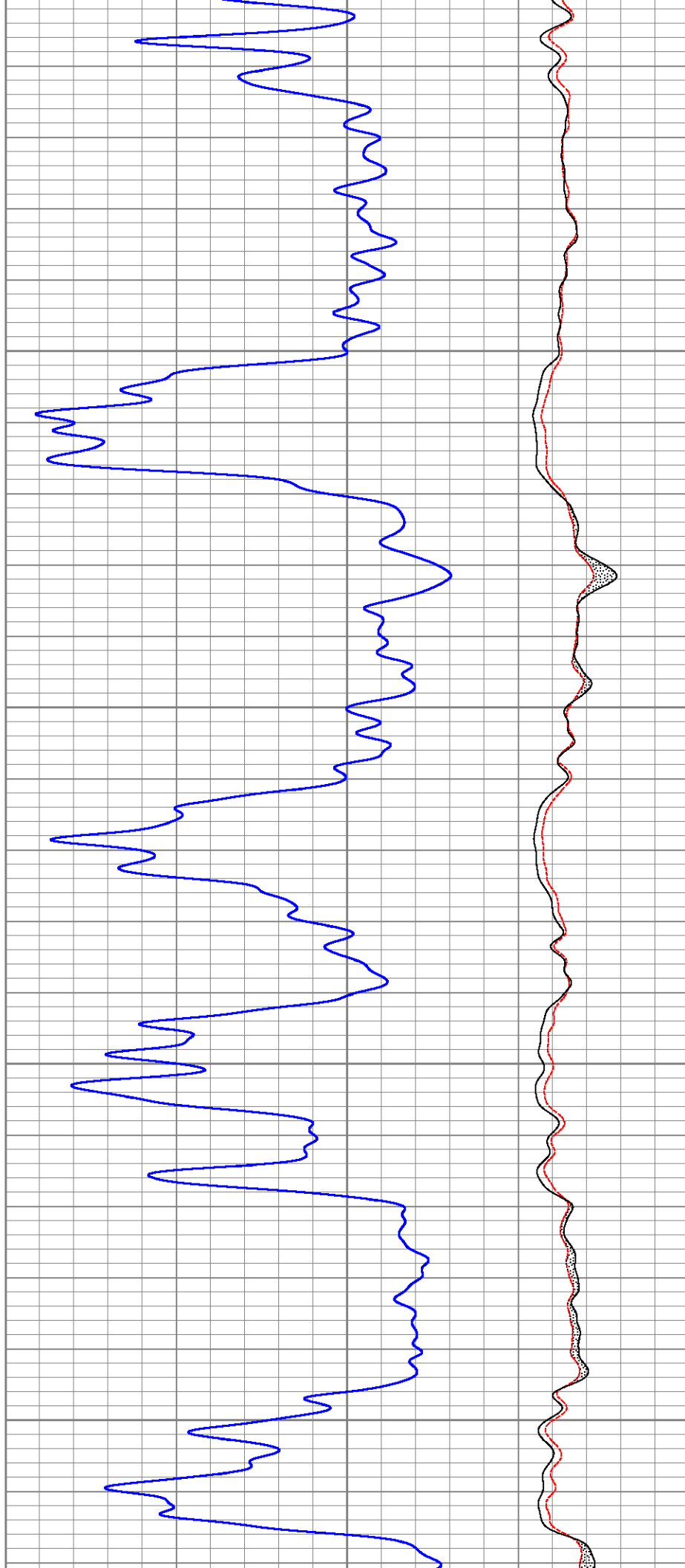
8300

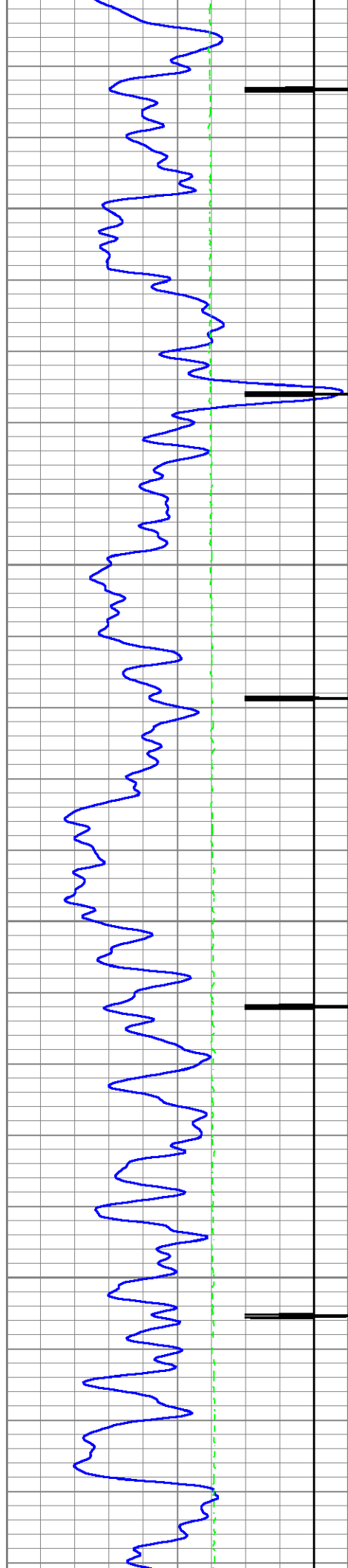




8400

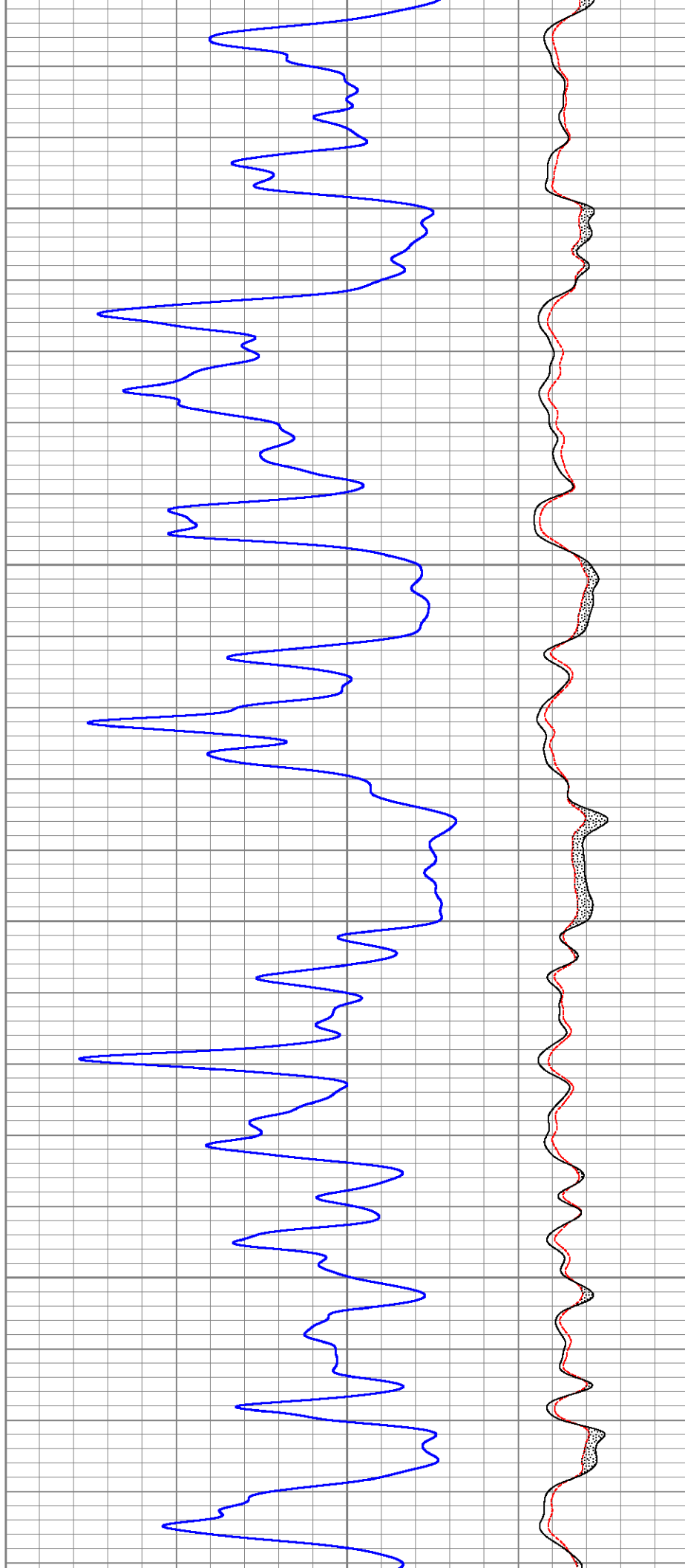
8500

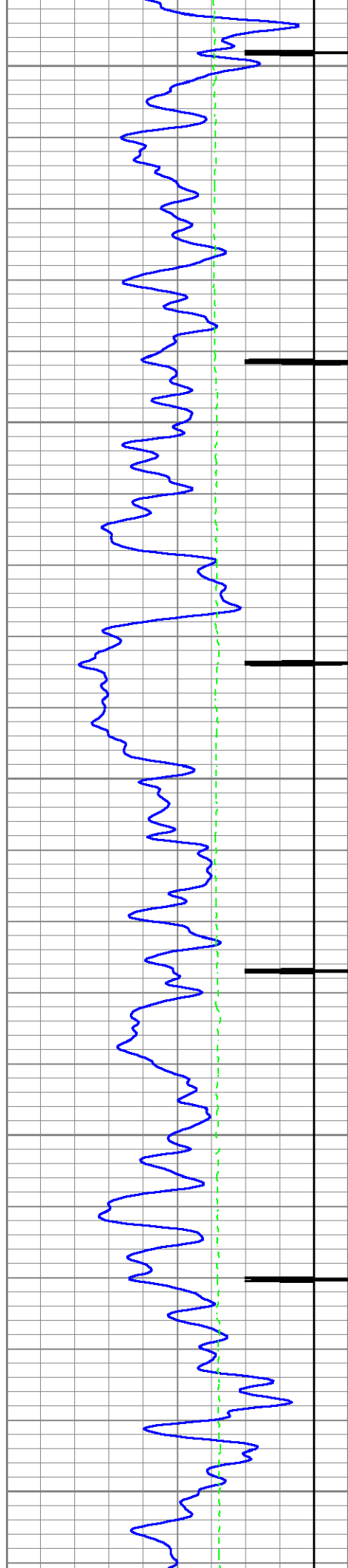




8600

8700

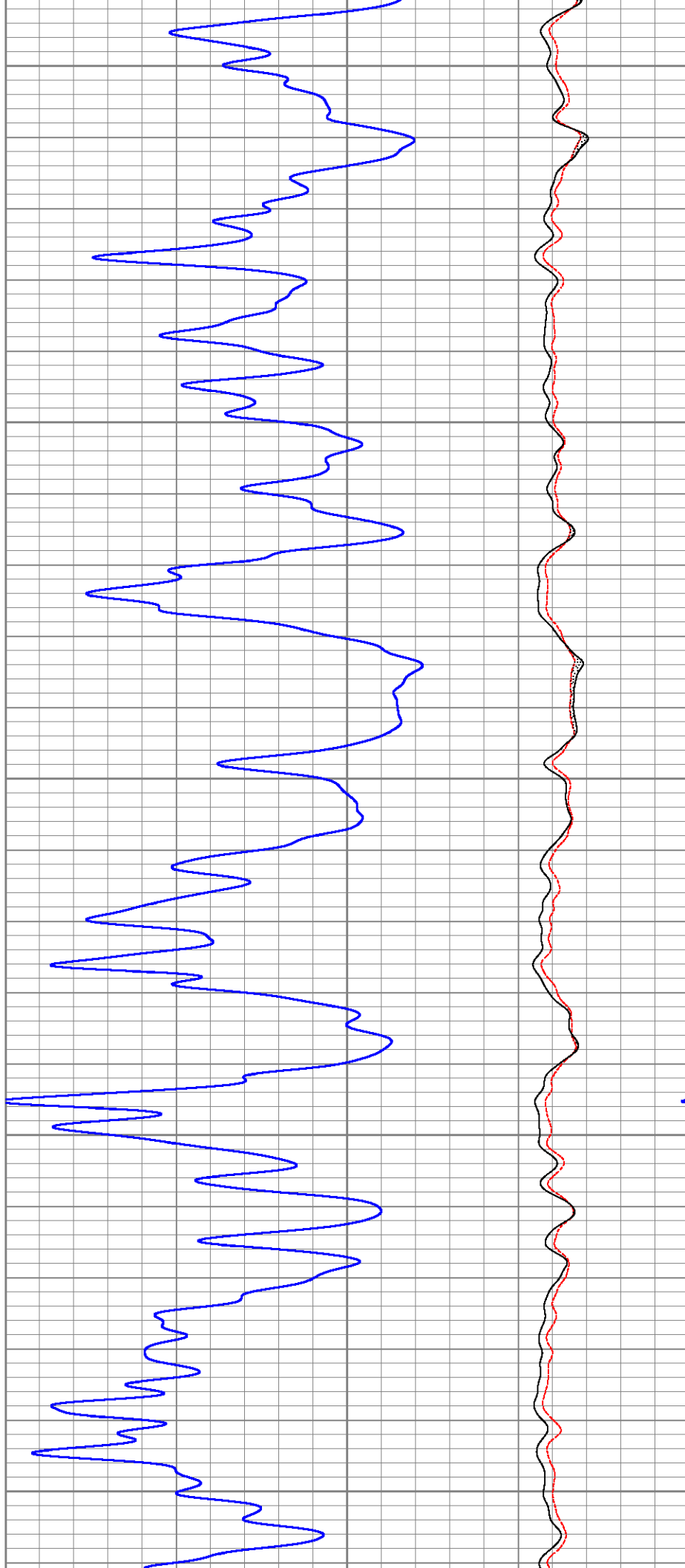


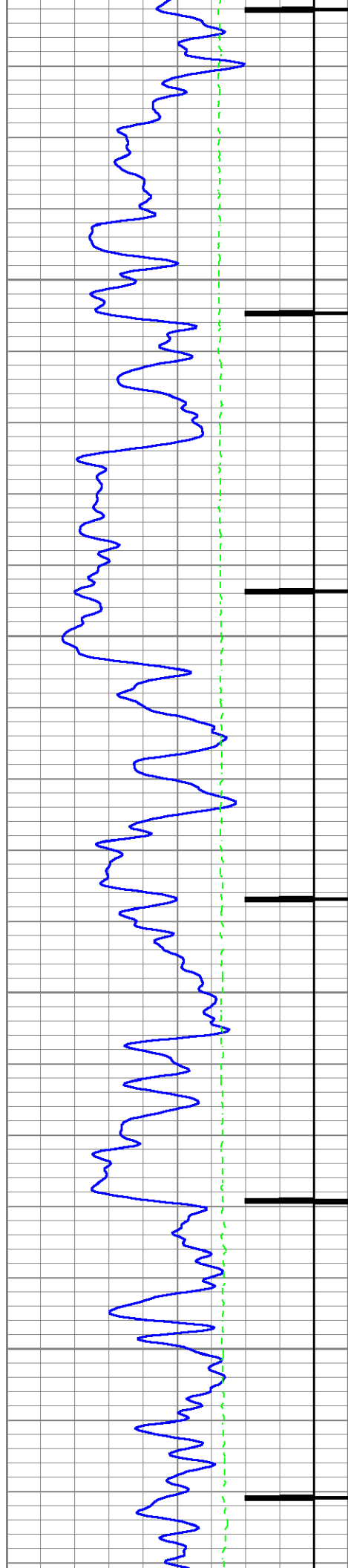


8800

8900

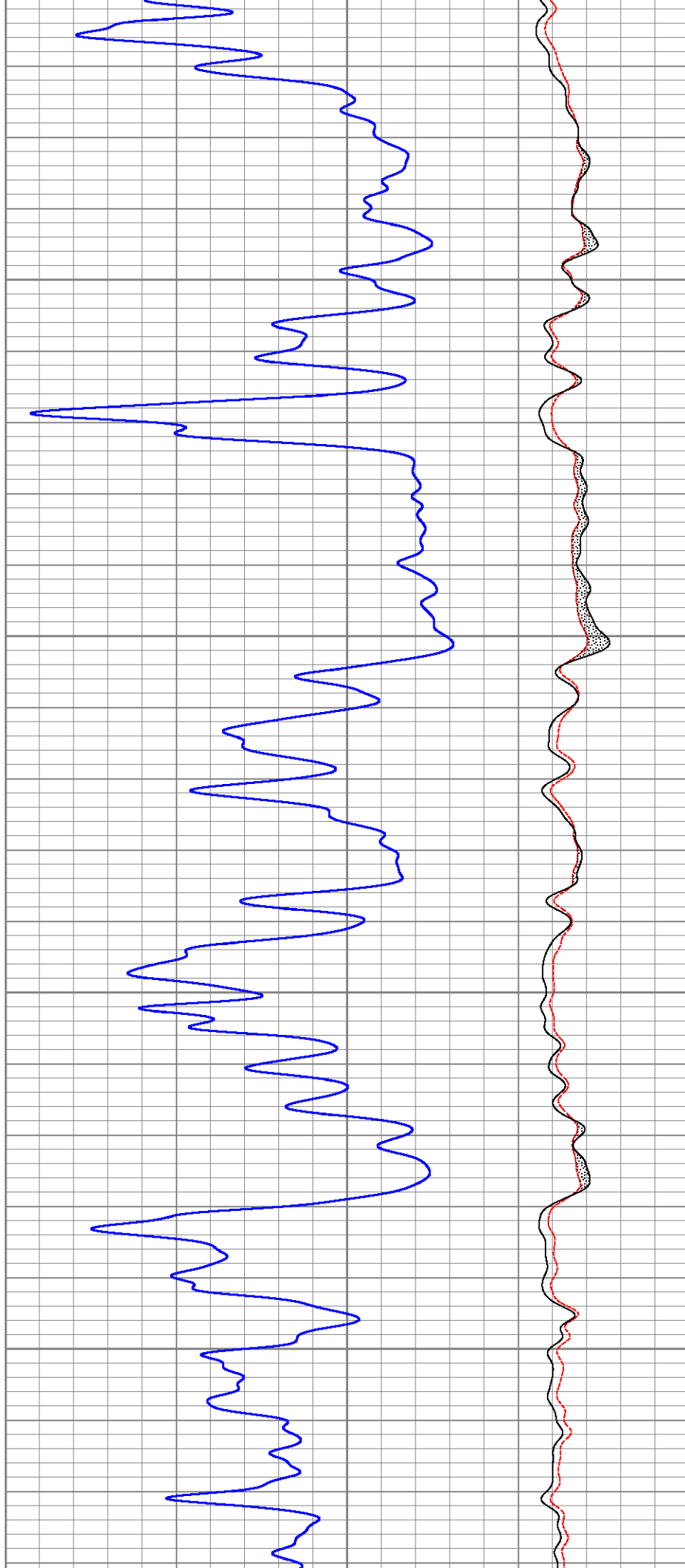
9000

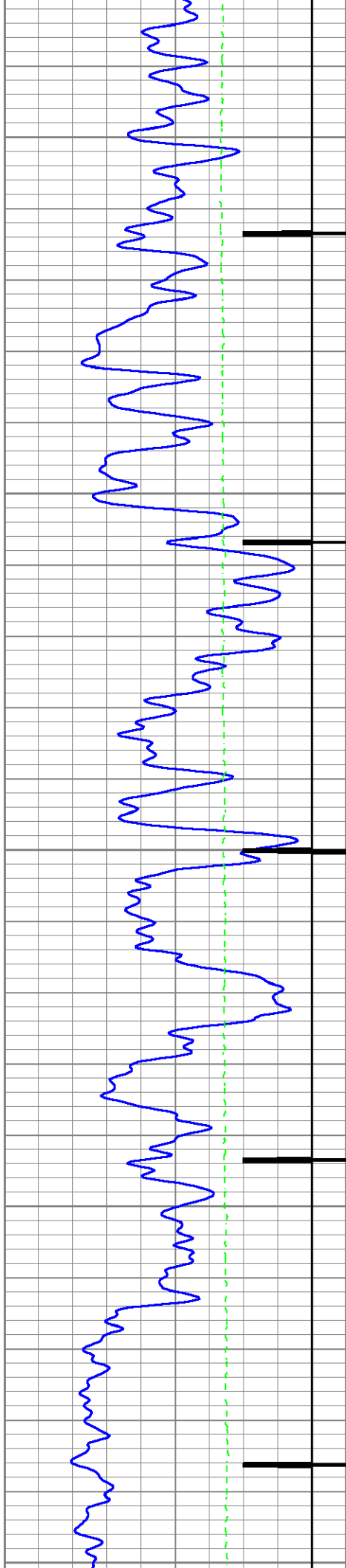




9100

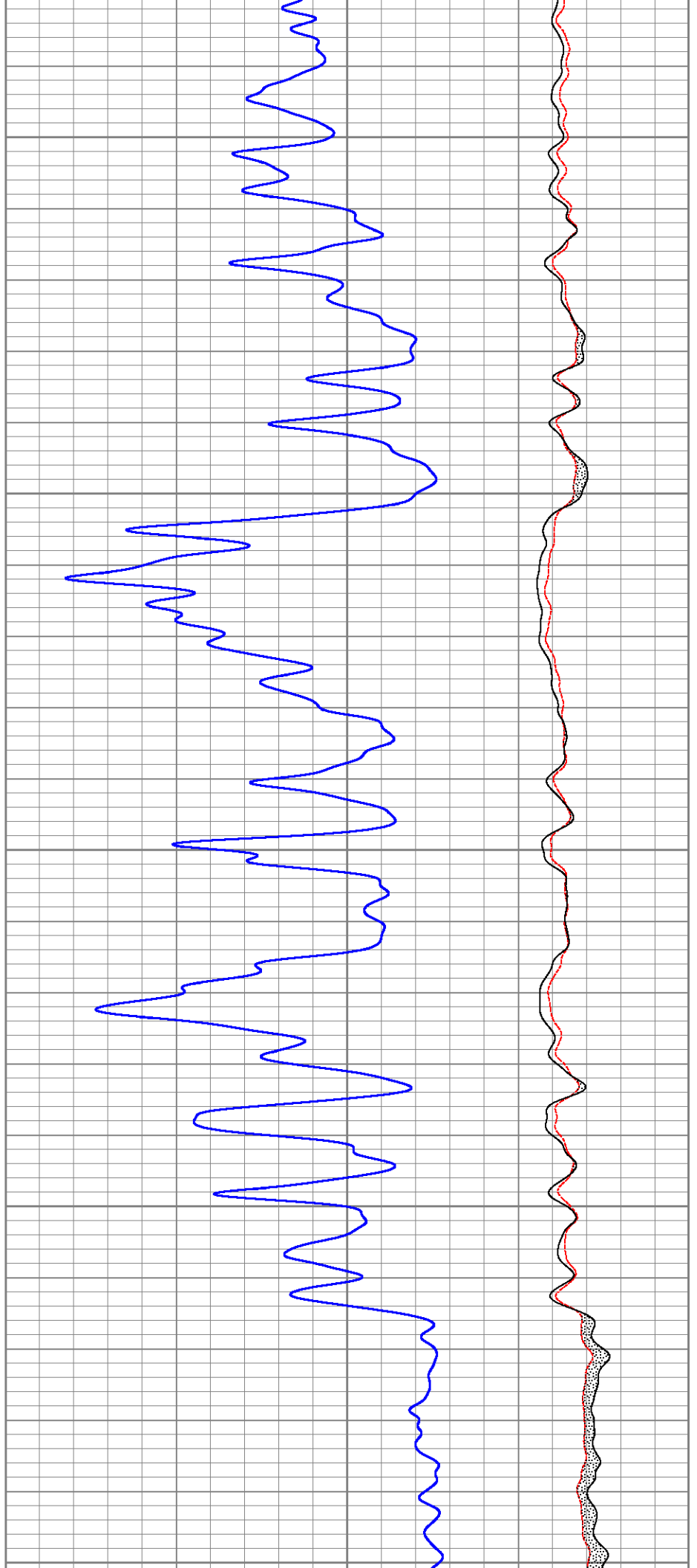
9200

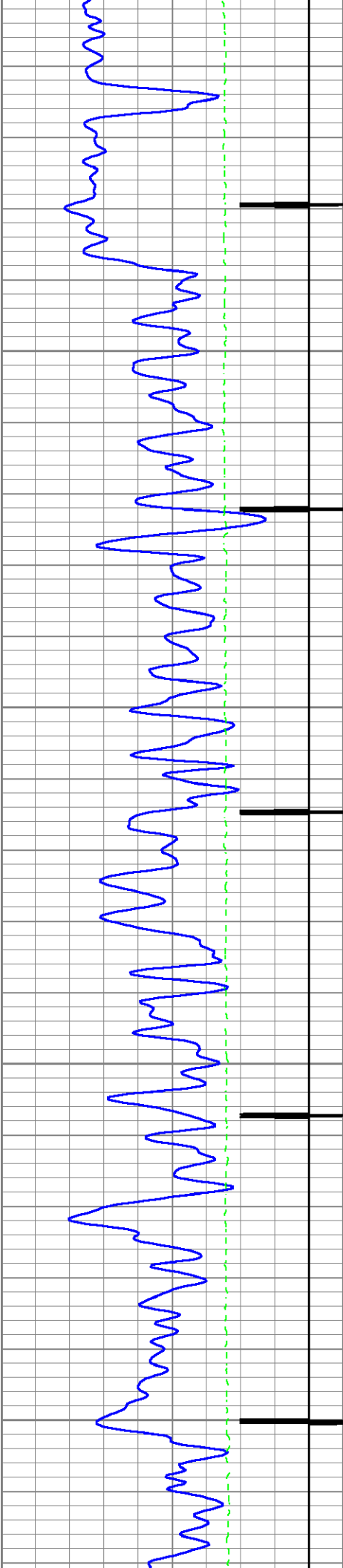




9300

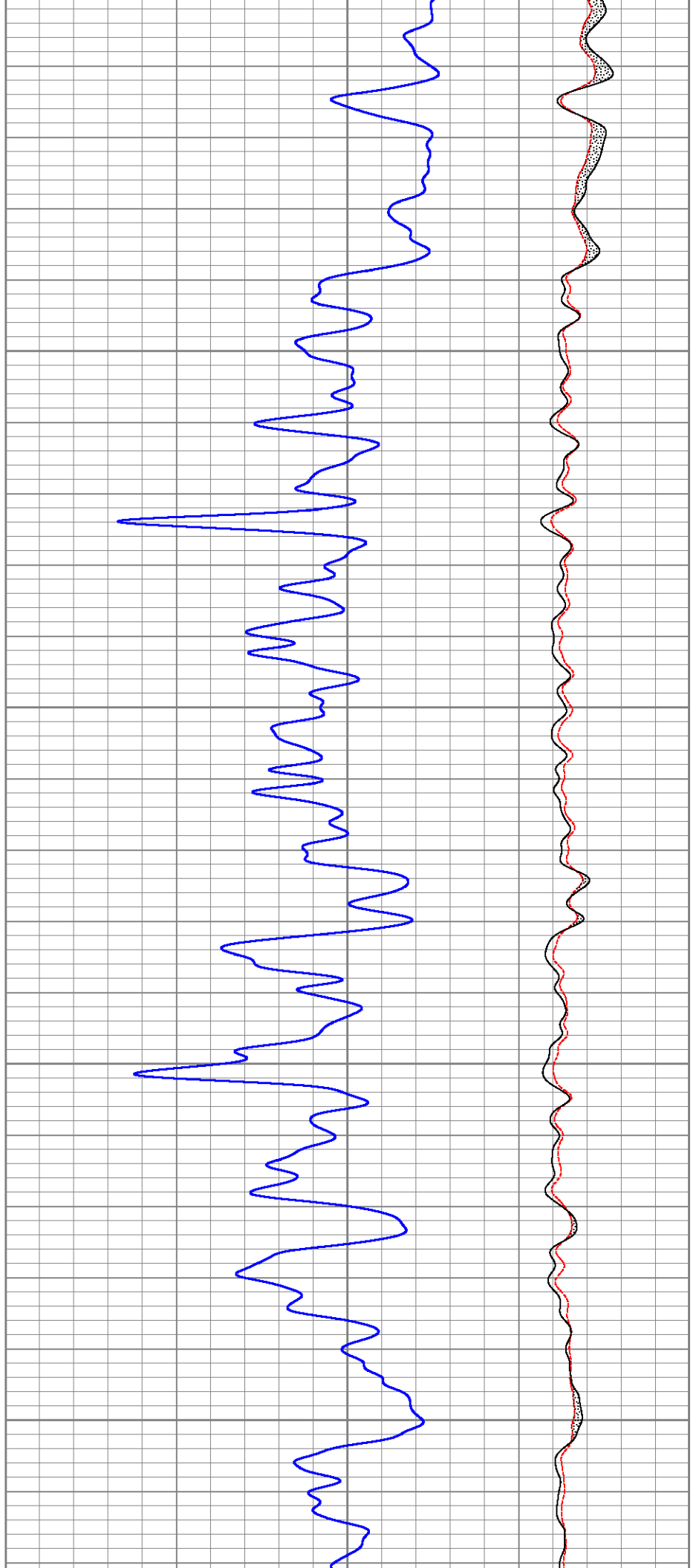
9400

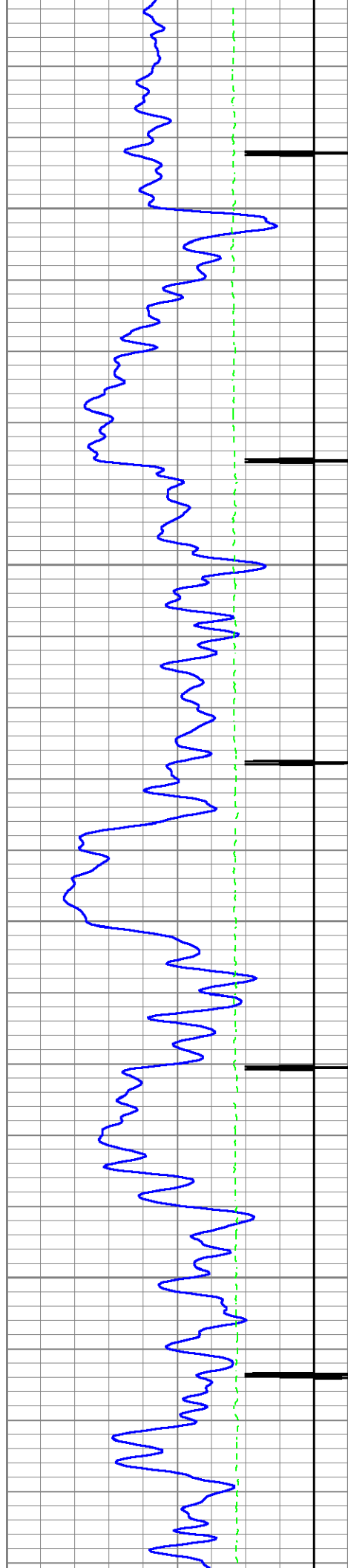




9500

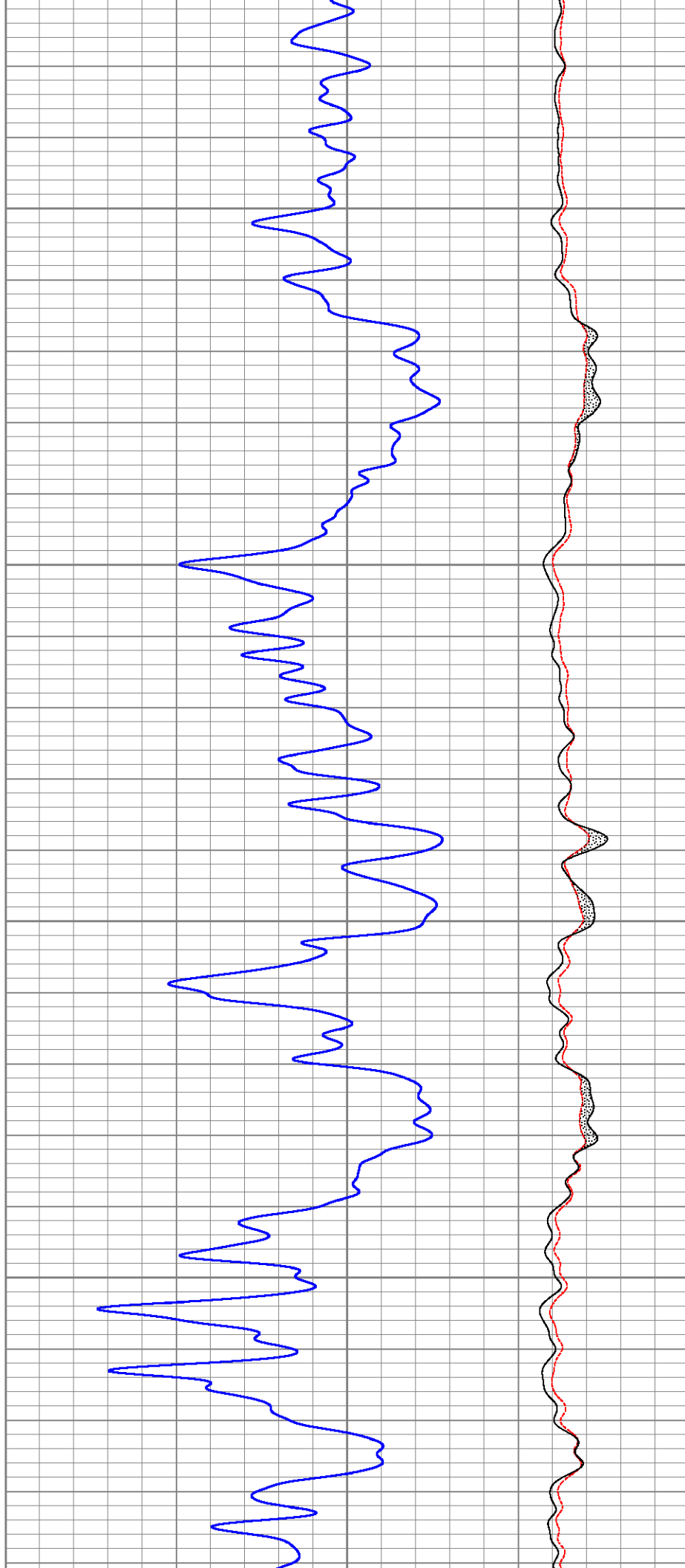
9600

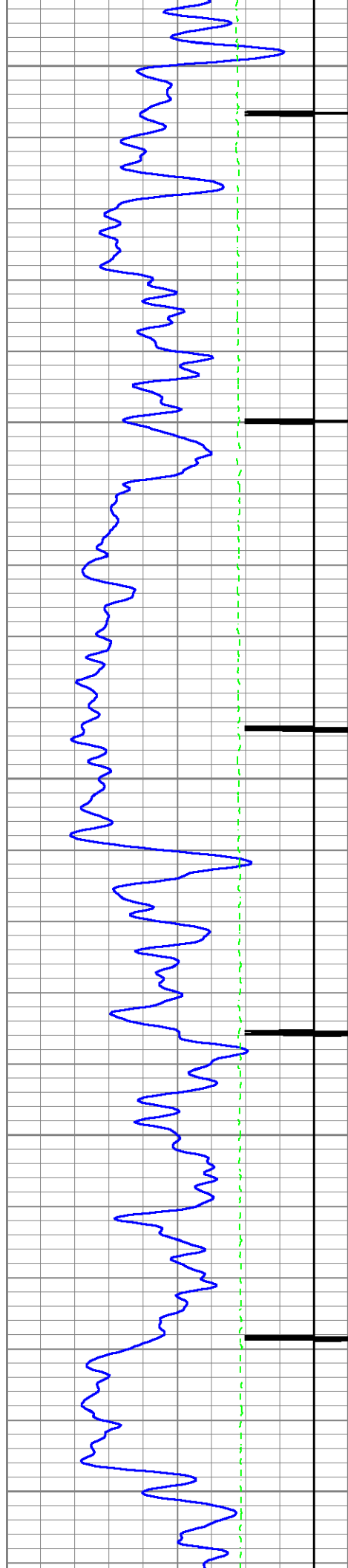




9700

9800

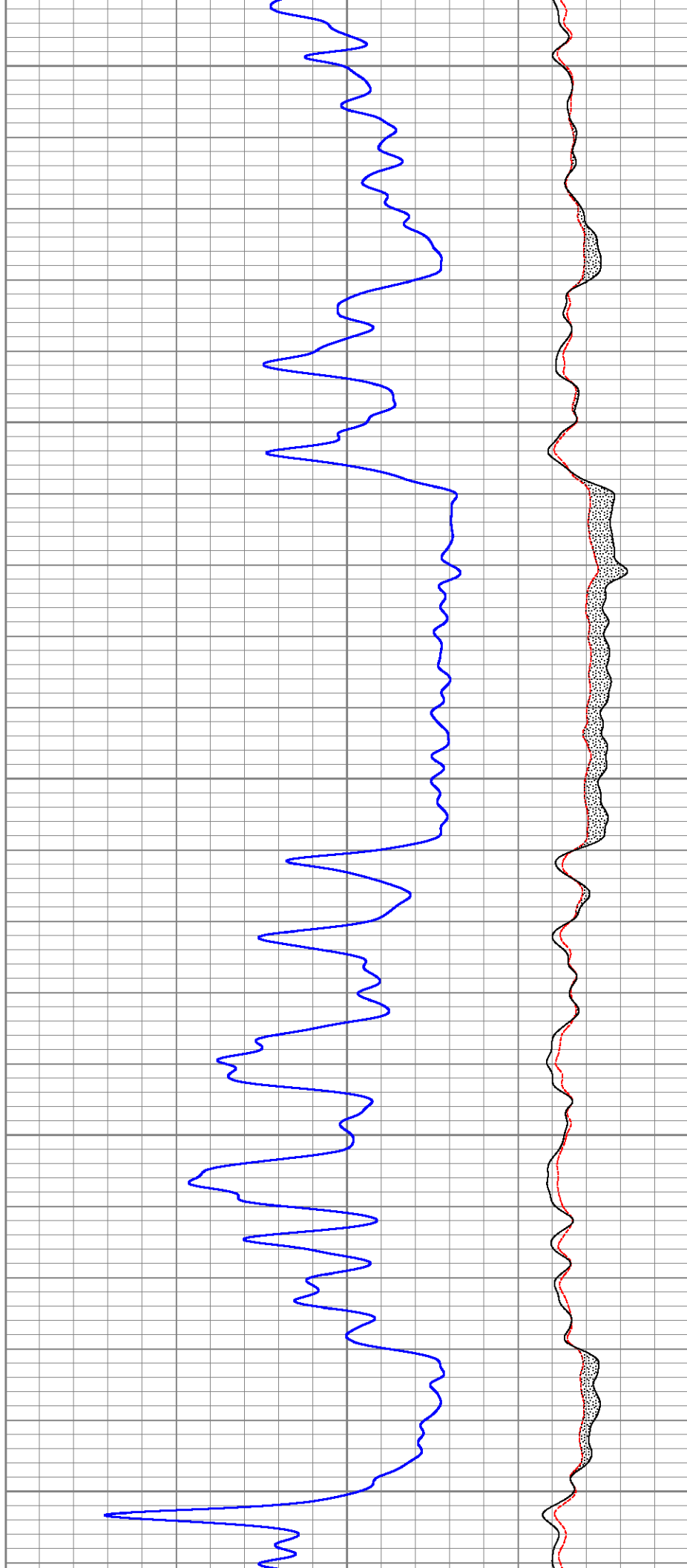


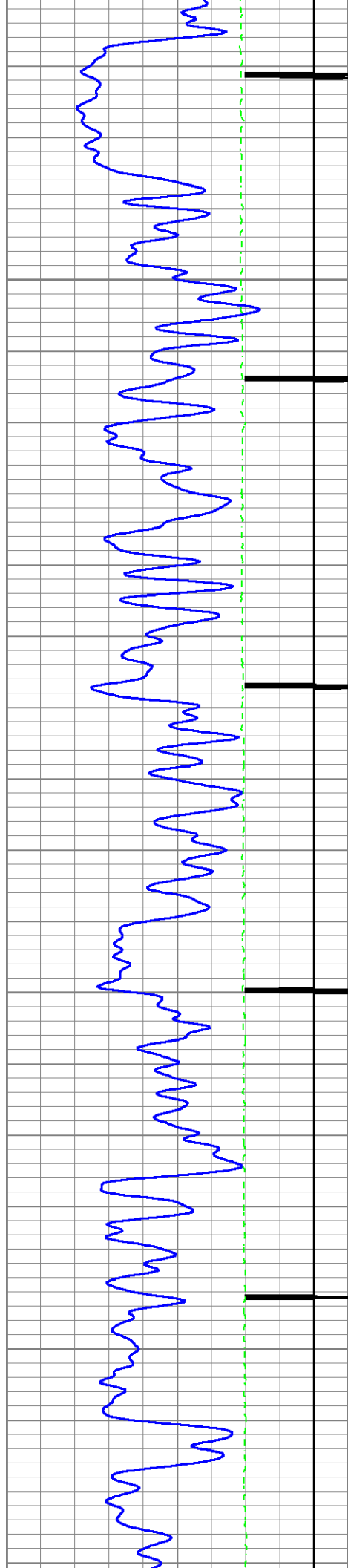


9900

10000

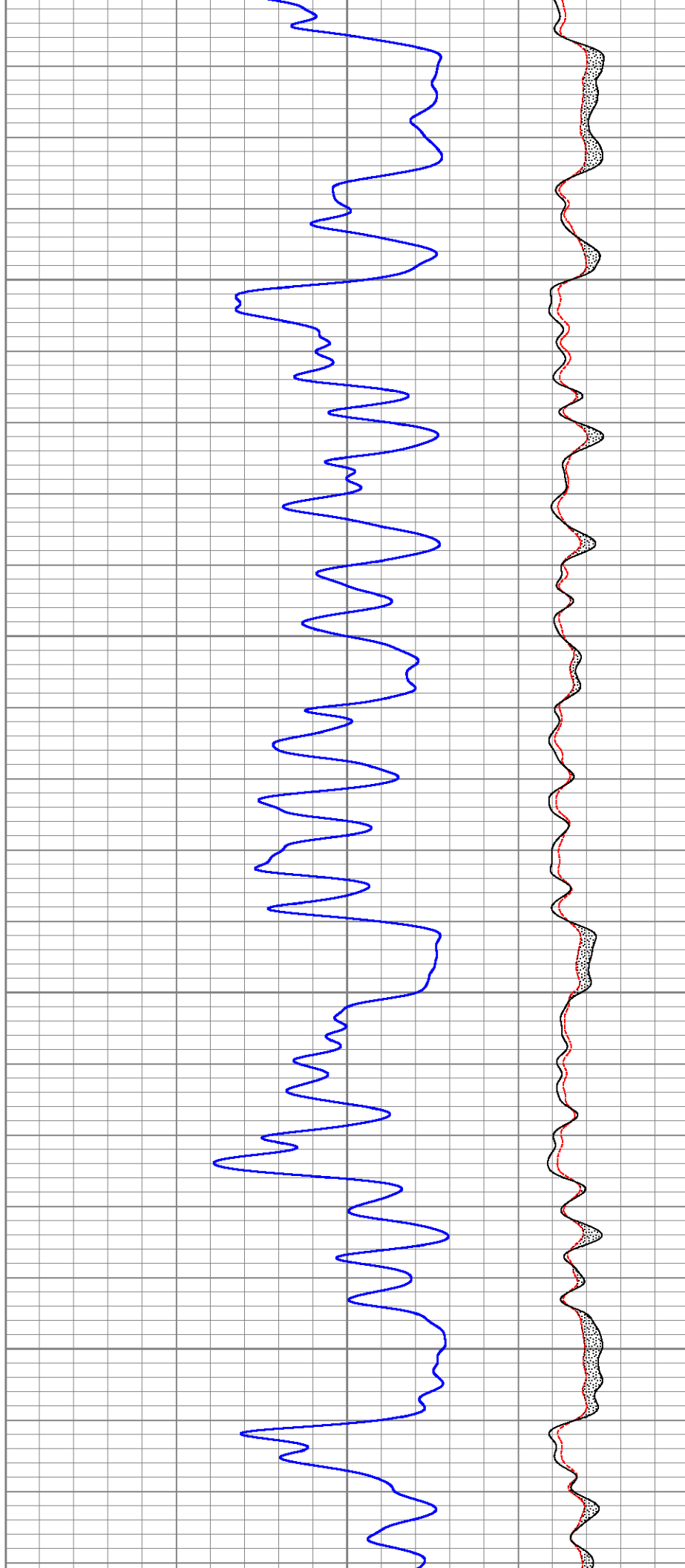
10100

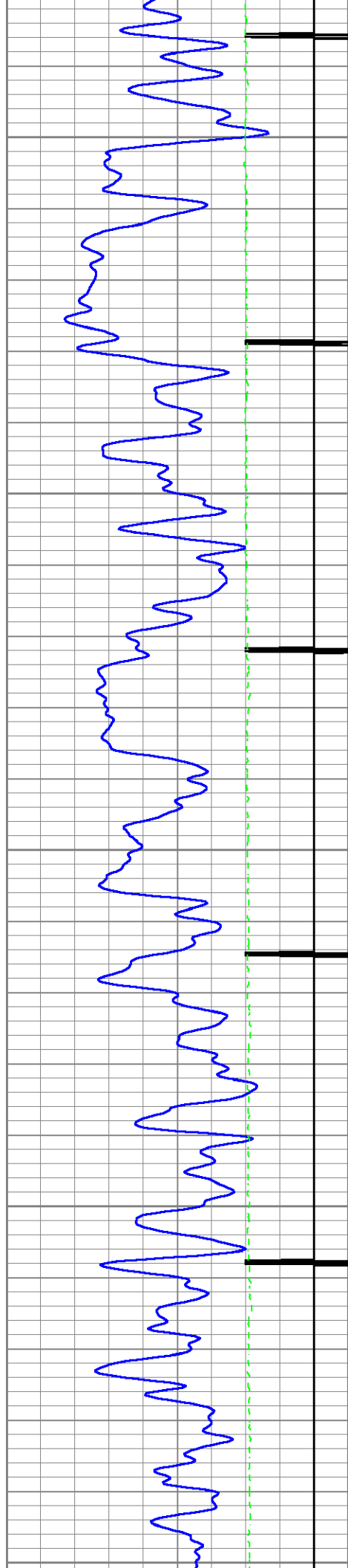




10200

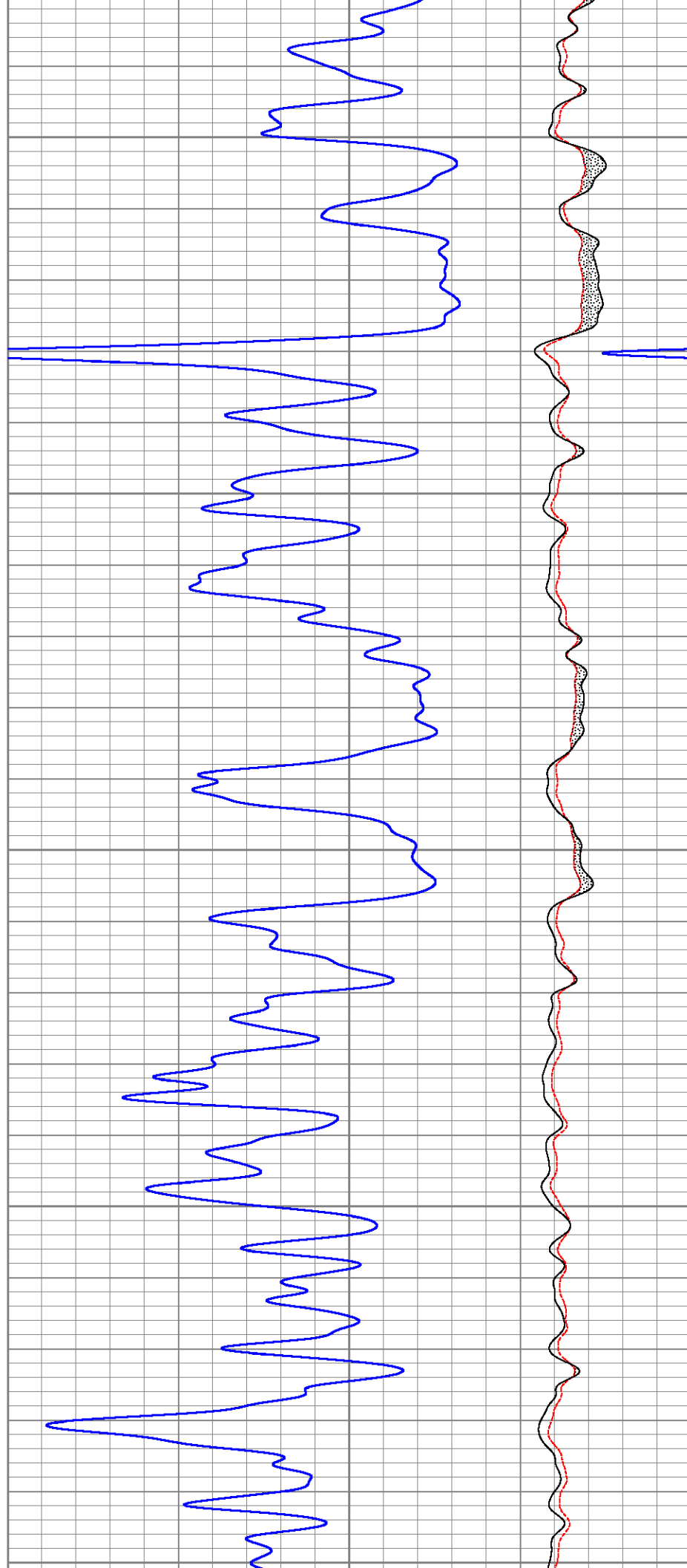
10300

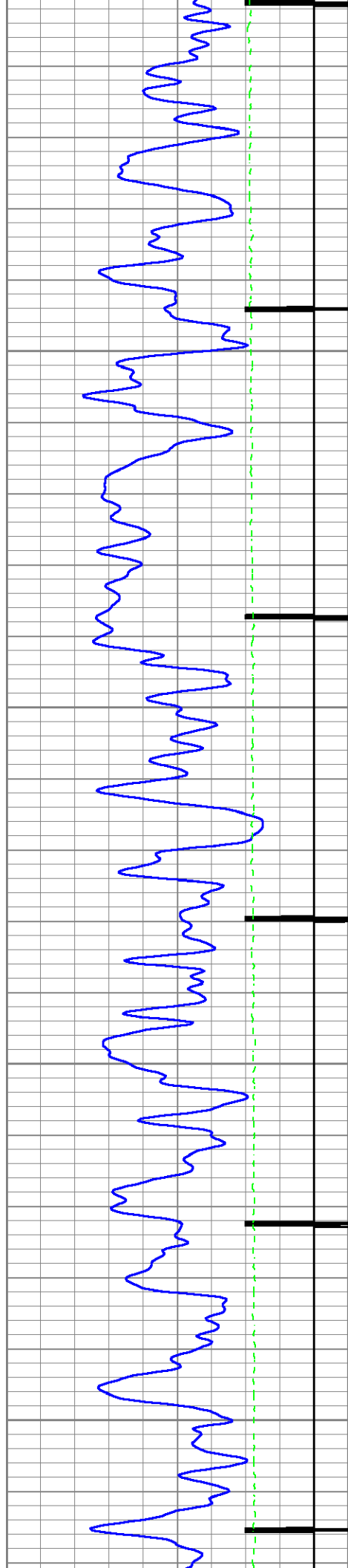




10400

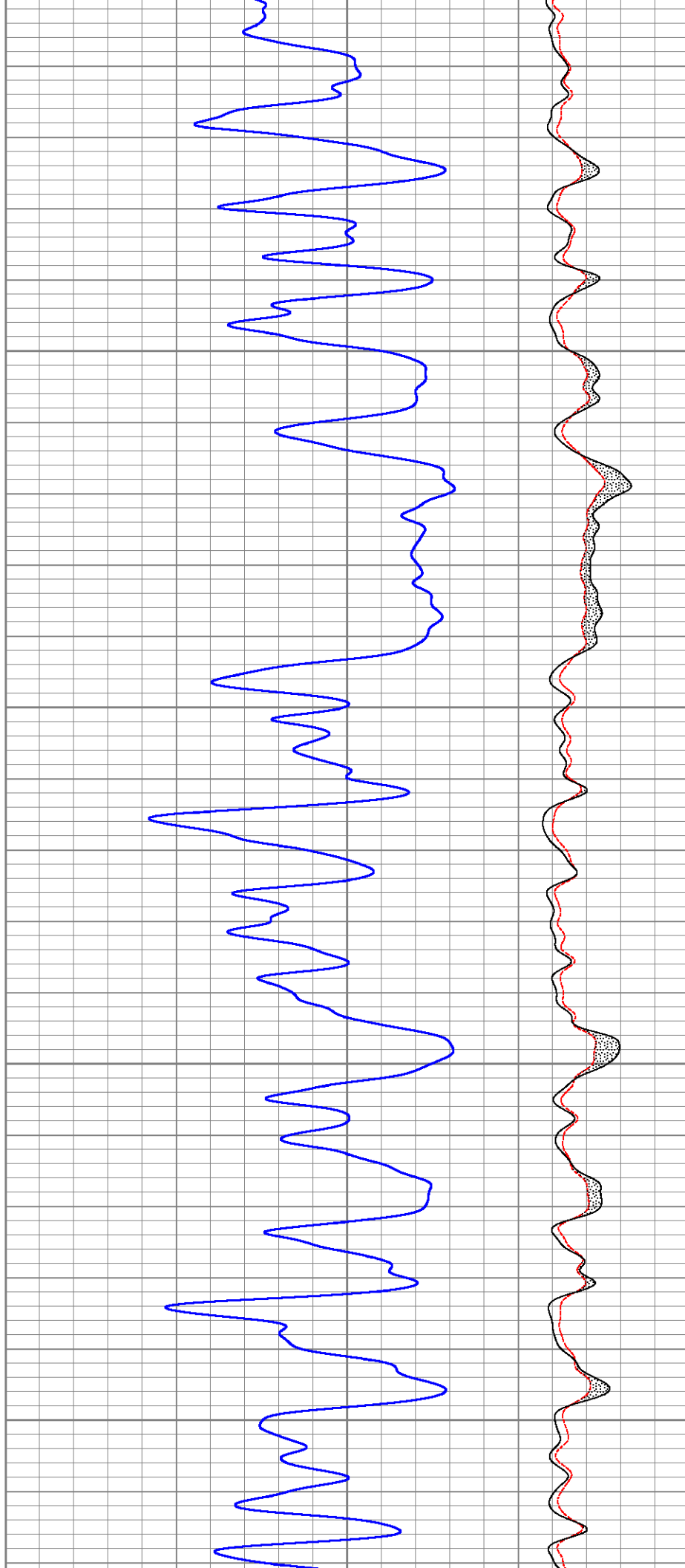
10500

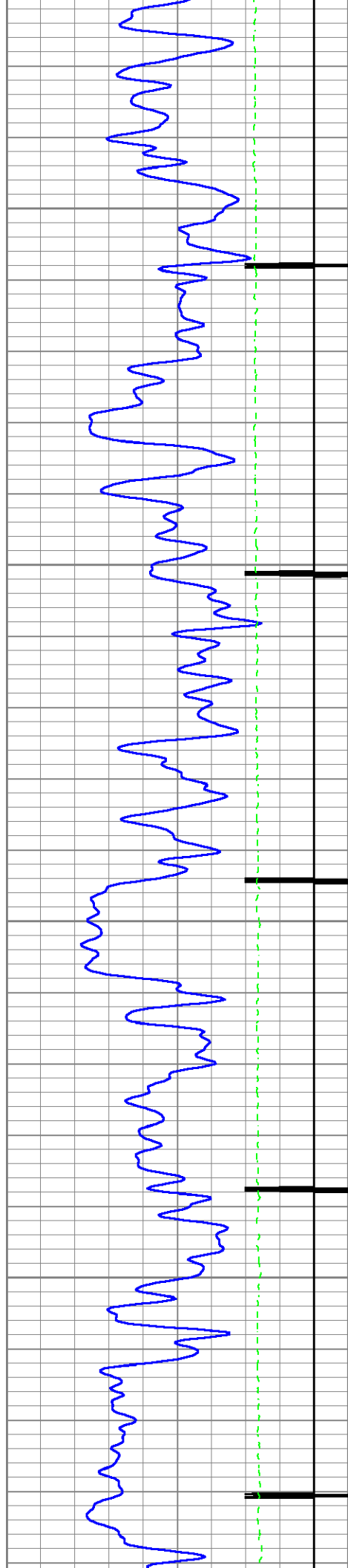




10600

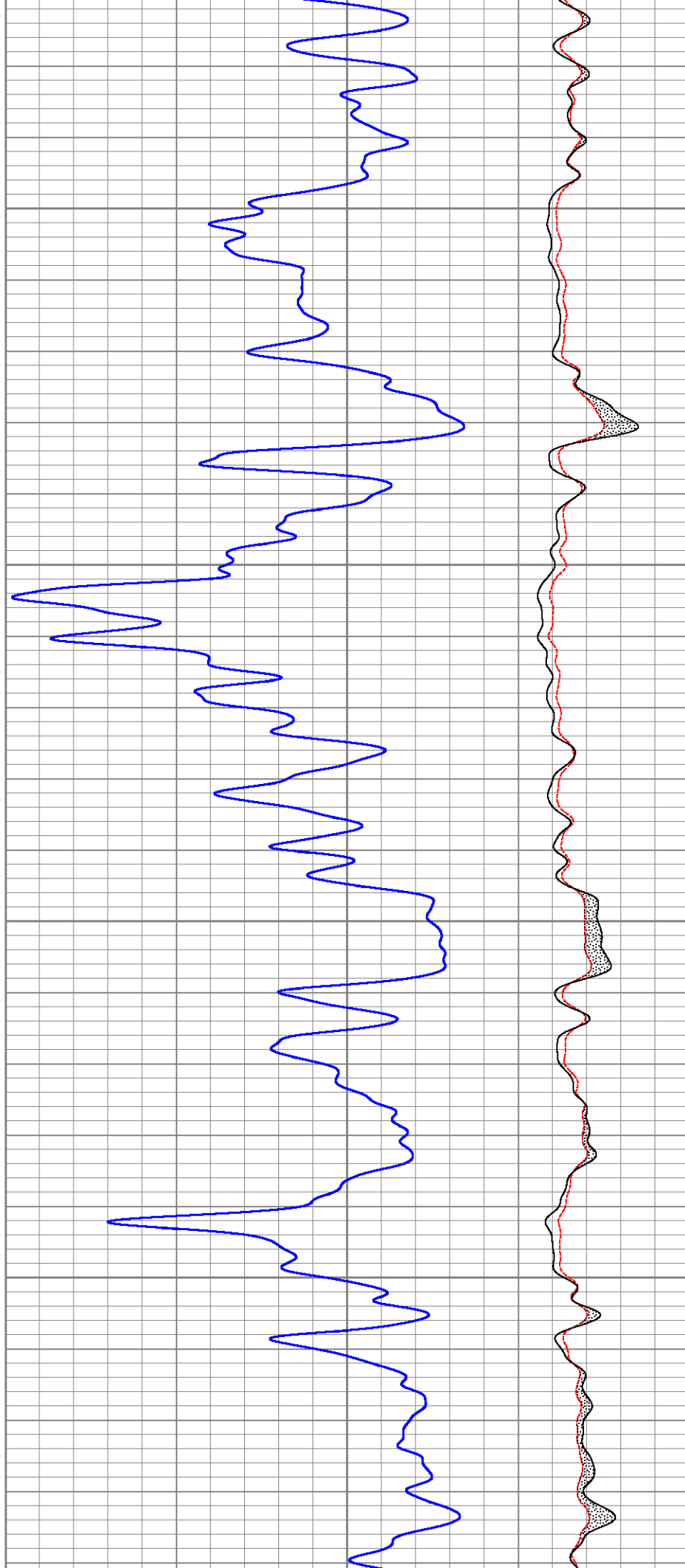
10700

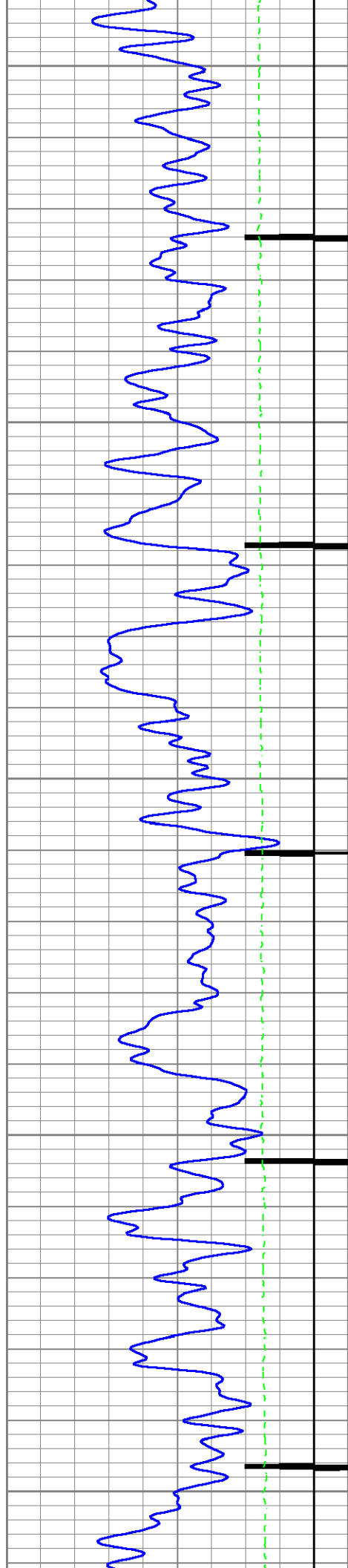




10800

10900

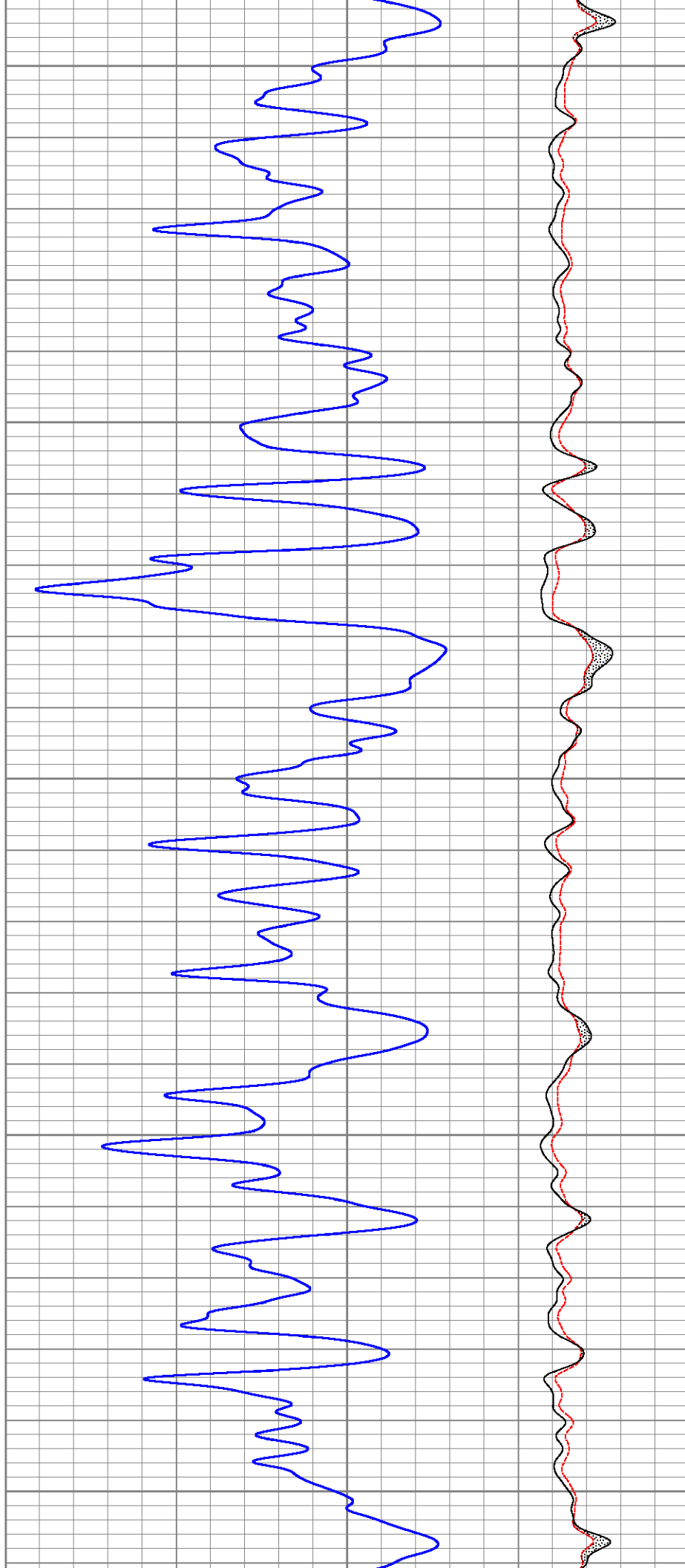


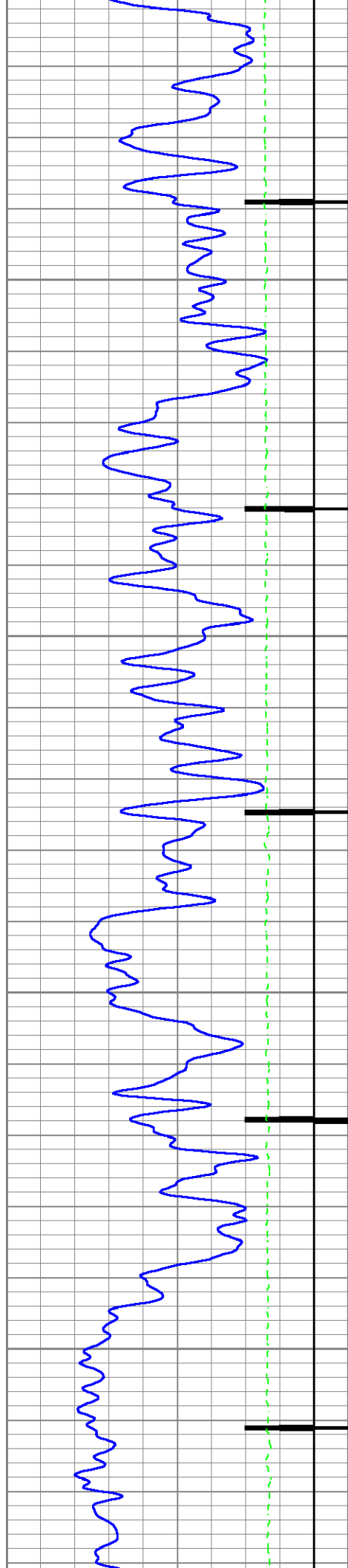


11000

11100

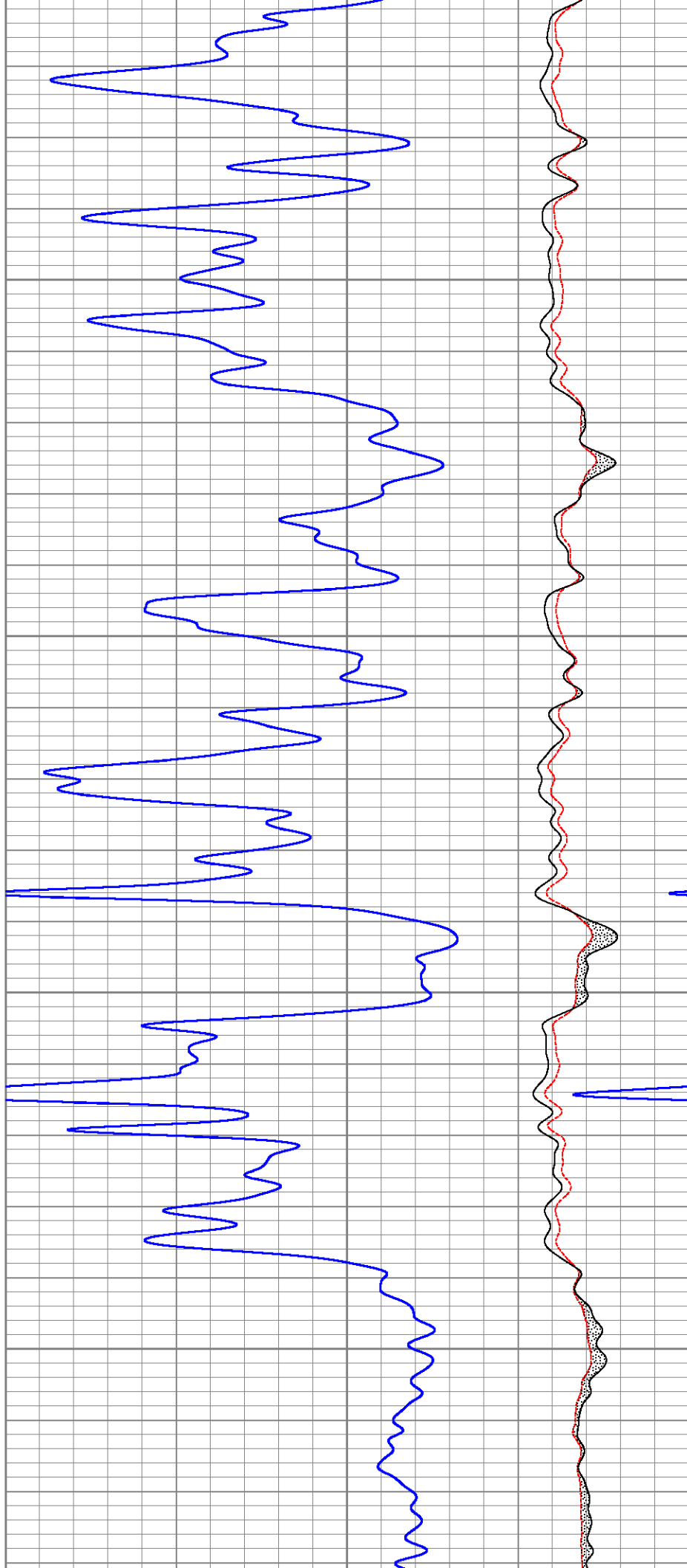
11200

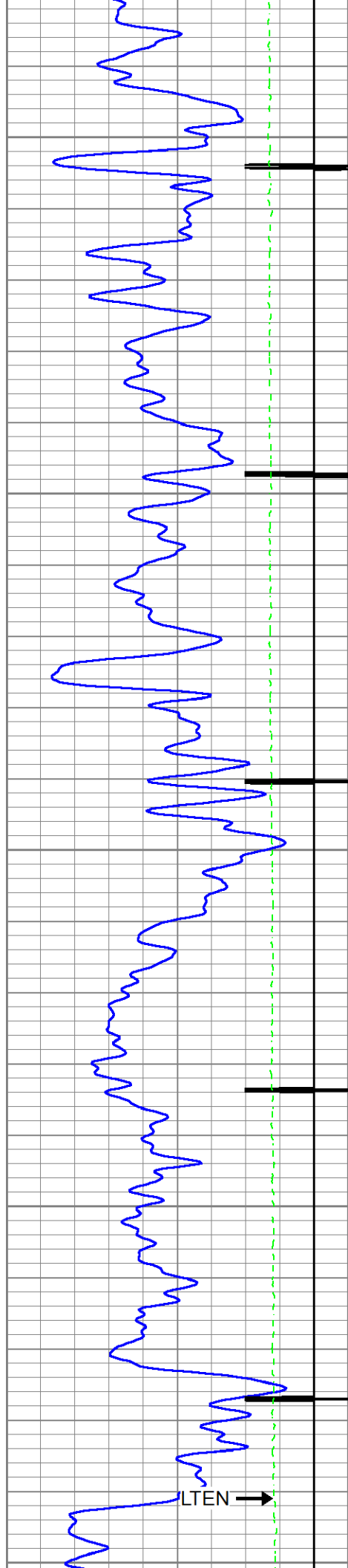




11300

11400

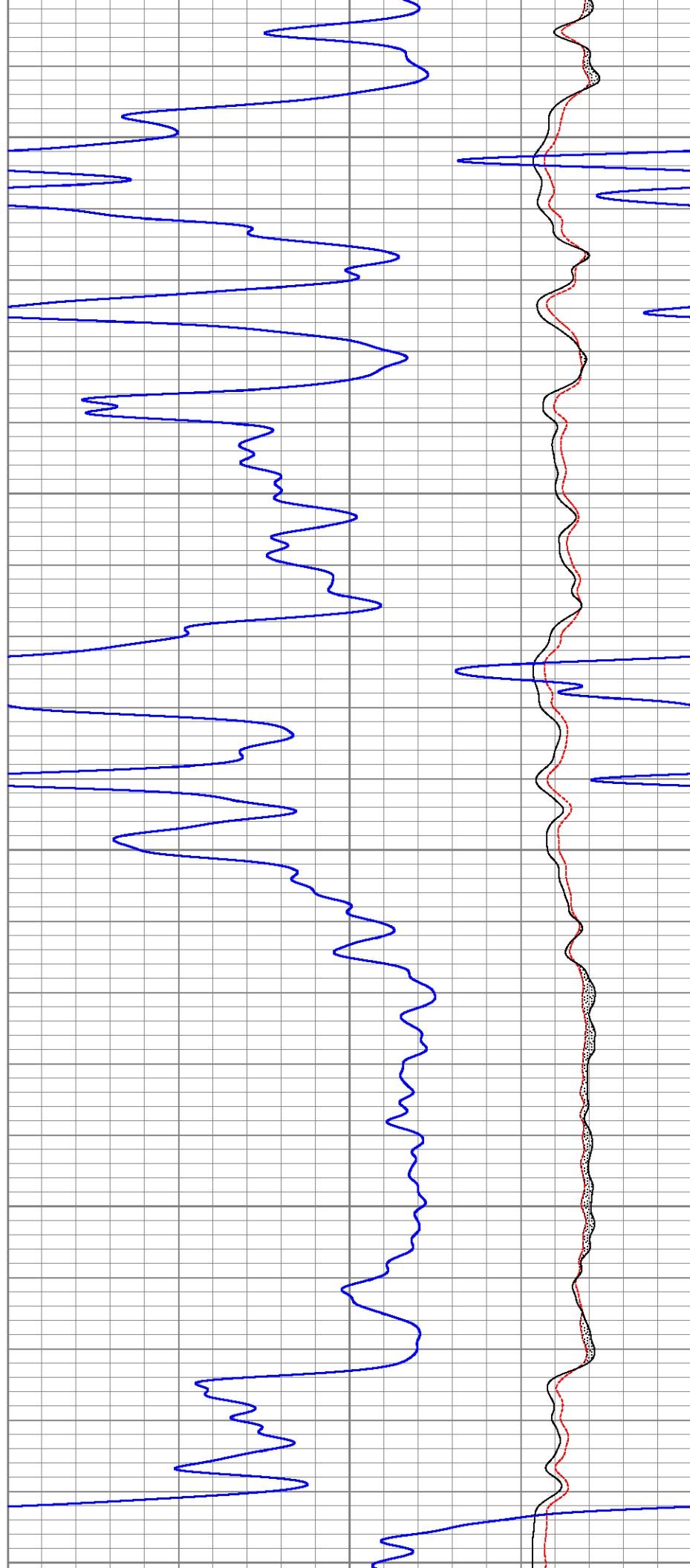


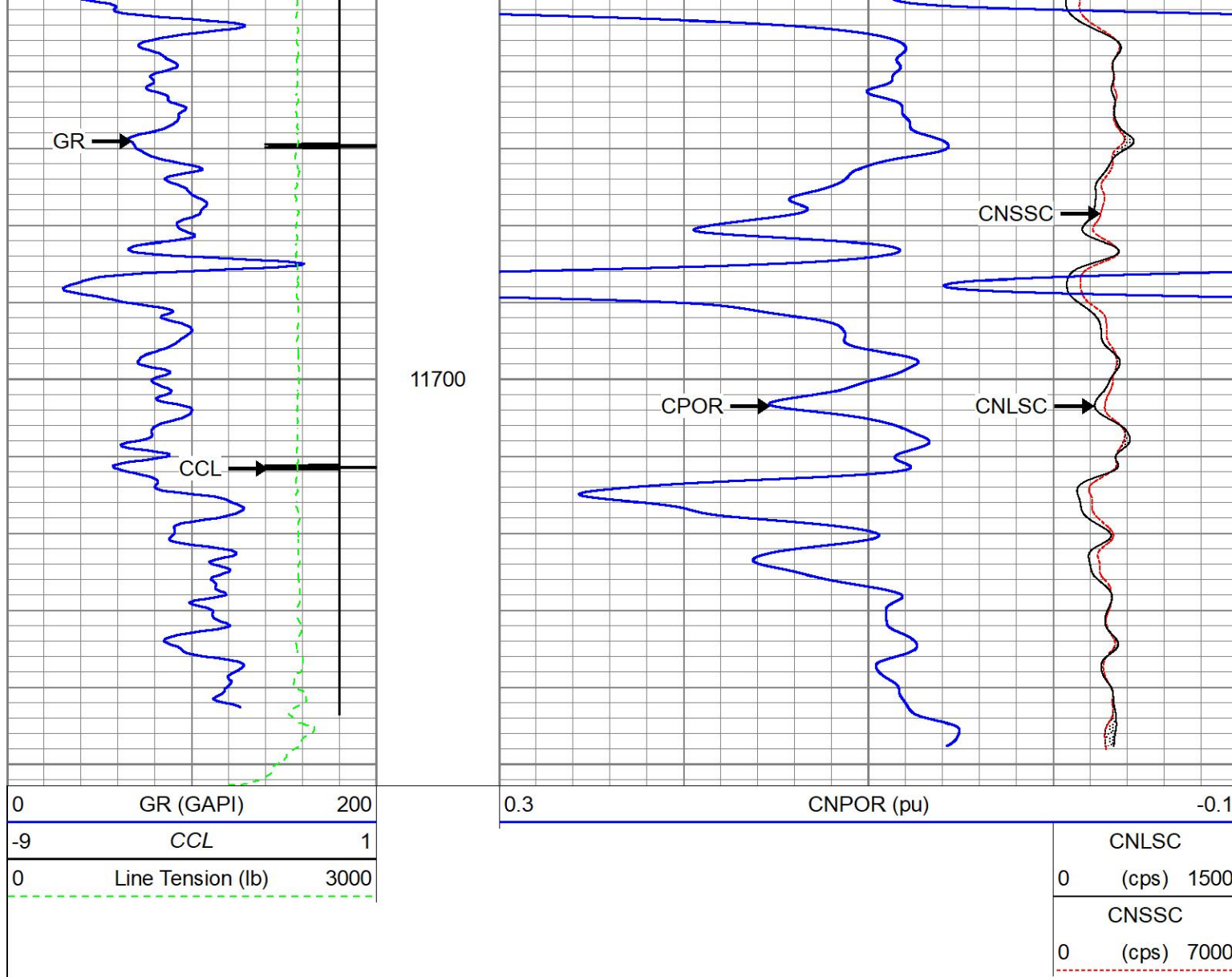


11500

11600

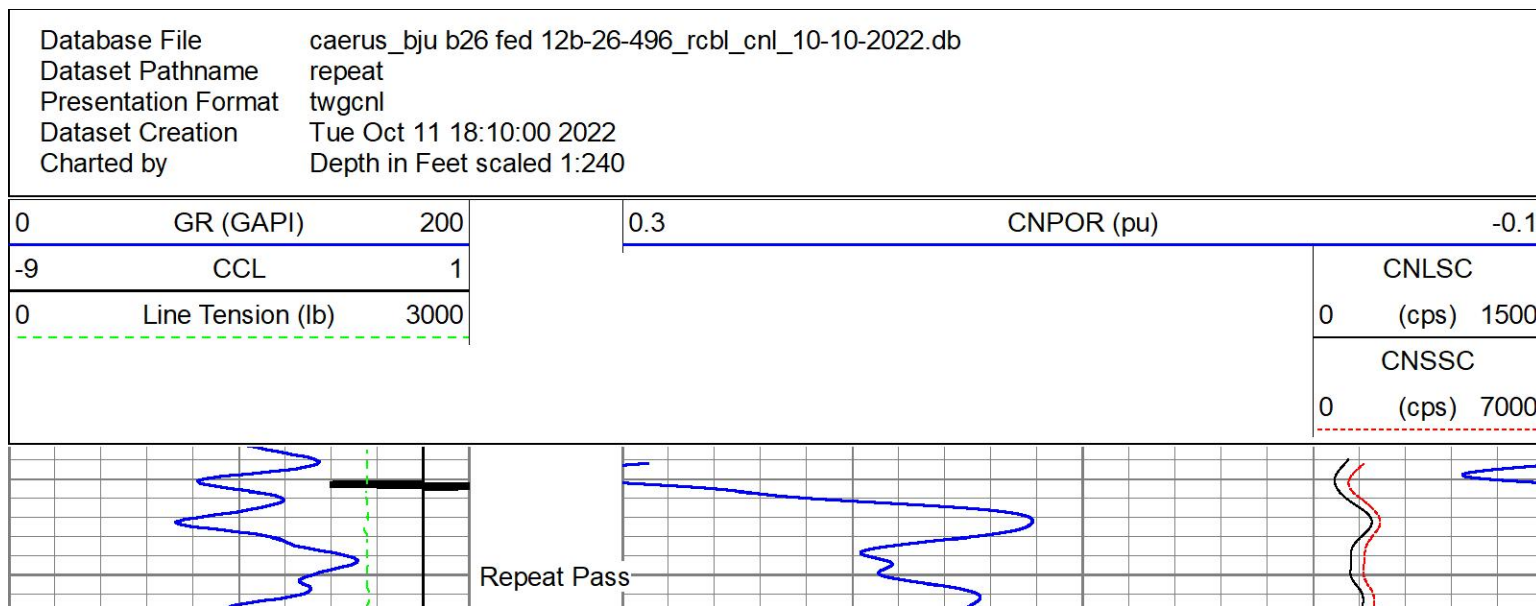
LTEN →

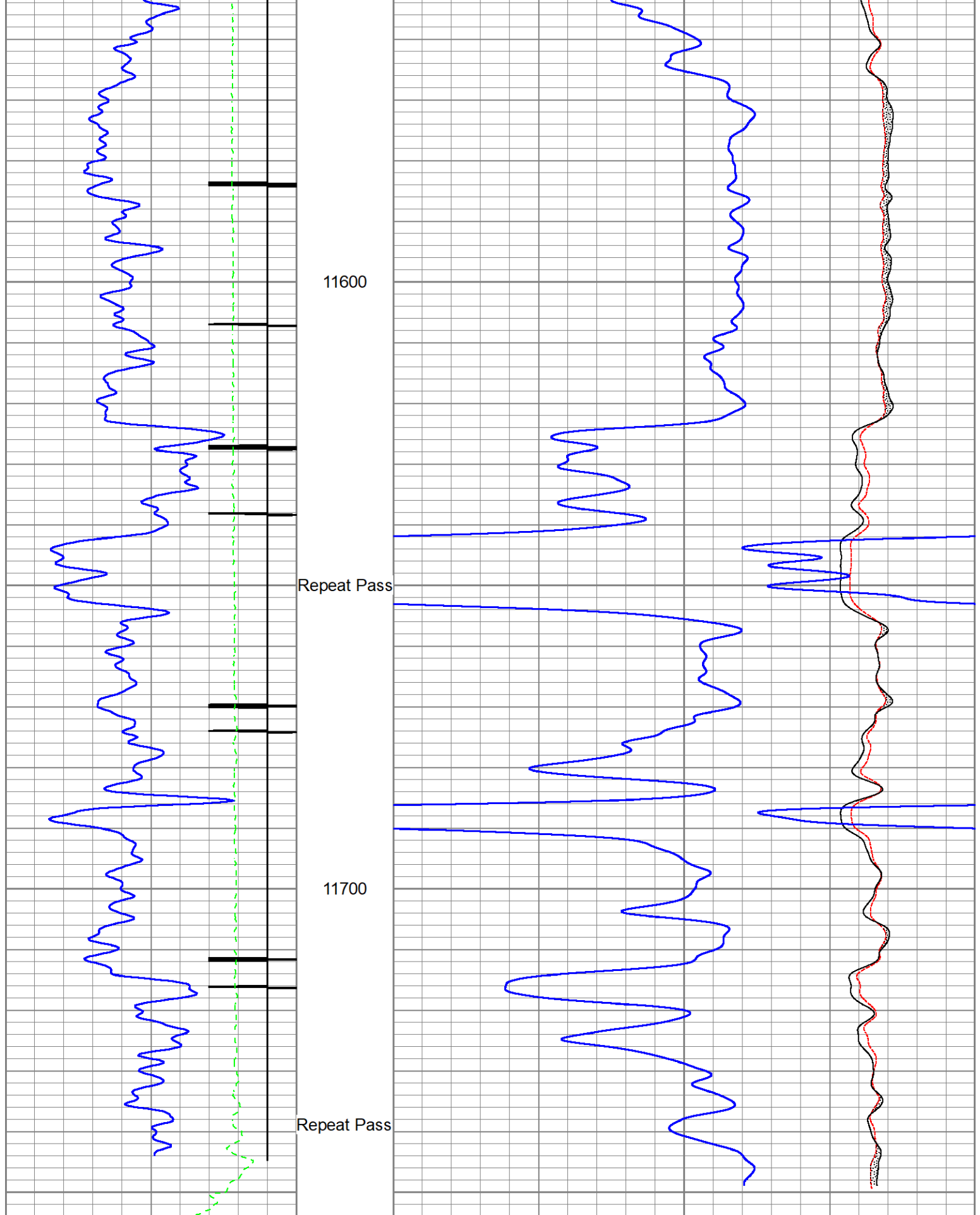






Repeat Pass 5" = 100'





0	GR (GAPI)	200	0.3	CNPOR (pu)	-0.1	CNLSC
-9	CCL	1				0 (cps) 1500
0	Line Tension (lb)	3000				CNSSC

Calibration Report

Database File caerus_bju b26 fed 12b-26-496_rcbl_cnl_10-10-2022.db
 Dataset Pathname main
 Dataset Creation Tue Oct 11 18:15:13 2022

Compensated Neutron Calibration Report

Model: CNT - 275Dig
 Serial Number: FW1409-35

SHOP CALIBRATION

Thu Mar 31 15:47:13 2022

	Cal Tube	Units
Tank Ratio	11.6940	SS/LS
LS Detector	68.71	cps
SS Detector	748.49	cps
Tool Ratio	10.8929	SS/LS
Tool Gain	1.0735	----

PRE-SURVEY VERIFICATION

SS Detector	LS Detector	Measured (p.u.)	Target (p.u.)
-------------	-------------	-----------------	---------------

POST-SURVEY VERIFICATION

SS Detector	LS Detector	Measured (p.u.)	Target (p.u.)
-------------	-------------	-----------------	---------------

Gamma Ray Calibration Report

Type / Serial: Probe275dig / FW1403-104

SHOP CALIBRATION

Thu Mar 31 15:29:33 2022

	Counts/Sec.	Gain	Offset	Jig	Units
Background	64.8				cps
Calibrator	250.4				cps
		0.8888			GAPI/cps

PRIMARY VERIFICATION

Background	0.0				cps
Calibrator	0.0				cps
Difference				0.0	GAPI

BEFORE SURVEY VERIFICATION

Background	0.0				cps
Calibrator	0.0				cps
Difference				0.0	GAPI

AFTER SURVEY VERIFICATION

Background	0.0				cps
Calibrator	0.0				cps
Difference				0.0	GAPI

Segmented Cement Bond Log Calibration Report

Serial Number: FW1312-30
 Tool Model: Probe275acc

Calibration Casing Diameter: 4.500 in
 Calibration Depth: 37.892 ft

Master Calibration, performed Tue Oct 11 14:23:01 2022:

	Raw (v)		Calibrated (mv)		Results	
	Zero	Cal	Zero	Cal	Gain	Offset
3'	0.004	0.751	0.000	81.196	108.777	-0.483
CAL	0.004	0.759				
5'	0.005	0.726	0.000	81.196	112.573	-0.511
SUM						
S1	0.005	0.758	0.000	100.000	132.825	-0.629
S2	0.005	0.760	0.000	100.000	132.357	-0.645
S3	0.004	0.764	0.000	100.000	131.609	-0.519
S4	0.004	0.759	0.000	100.000	132.338	-0.509
S5	0.004	0.758	0.000	100.000	132.670	-0.568
S6	0.004	0.750	0.000	100.000	134.077	-0.525
S7	0.004	0.747	0.000	100.000	134.639	-0.562
S8	0.005	0.748	0.000	100.000	134.666	-0.707

Internal Reference Calibration, performed (Not Performed):

	Raw (v)		Calibrated (v)		Results	
	Zero	Cal	Zero	Cal	Gain	Offset
CAL	0.000	0.000	0.004	0.759	1.000	0.000

Air Zero Calibration, performed Tue Oct 11 14:21:42 2022:


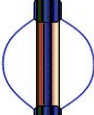
	Raw (v)		Calibrated (v)		Results	
	Zero		Zero		Offset	
3'	0.000		0.000			0.000
5'	0.000		0.000			0.000
SUM						
S1	0.000		0.000			0.000
S2	0.000		0.000			0.000
S3	0.000		0.000			0.000
S4	0.000		0.000			0.000
S5	0.000		0.000			0.000
S6	0.000		0.000			0.000
S7	0.000		0.000			0.000
S8	0.000		0.000			0.000

Inclinometer Calibration Report


Performed: Thu Jul 28 15:46:49 2022

	Low Read.	High Read.	Low Ref.	High Ref.	
X Accelerometer	-931.00	904.00	-1.00	1.00	gee
Y Accelerometer	-899.00	884.00	-1.00	1.00	gee

gee

Sensor	Offset (ft)	Schematic	Description	Length (ft)	O.D. (in)	Weight (lb)
						
			SO BS CENT-2750-4500 Slip Over 2-3/4" I.D. for 4-1/2" O.D. Casing Bow Spring Centralizer	1.33	3.25	10.00

Dataset:	caerus_bju b26 fed 12b-26-496_rcbl_cnl_10-10-2022.db: field/well/run1/main
Total length:	18.77 ft
Total weight:	237.00 lb
O.D.:	3.25 in

Company	Caerus Piceance LLC.		
Well	BJU B26 Fed 12B-26-496		
Field	Grand Valley		
County	Garfield	State	Colorado
		Compensated Neutron Gamma Ray Casing Collar Log	