



Compensated Neutron  
Gamma Ray  
Casing Collar Log

Company	Caerus Piceance LLC.	Country	USA
Well	BJU B26 Fed 11C-26-496		
Field	Grand Valley		
County	Garfield		
State	Colorado		
Location:	SEC 26 TWP 4S RGE 96W	API # : 05-045-24449	Other Services RCBL
Permanent Datum	Ground Level	Elevation	8211'
Log Measured From	Kelly Bushing		
Drilling Measured From	Kelly Bushing		
Elevation			K.B. 8241' D.F. 8240' G.L. 8211'

Date	11-OCT-2022
Run Number	One
Depth Driller	12070 FT
Depth Logger	11946 FT
Bottom Logged Interval	11932 FT
Top Log Interval	7550 FT
Open Hole Size	8.750"
Type Fluid	Fresh Water
Density / Viscosity	8.34 lb/gal
Max. Recorded Temp.	---
Estimated Cement Top	---
Time Well Ready	ROA
Time Logger on Bottom	07:30
Equipment Number	8053
Location	Grand Junction Colo
Recorded By	A. Ellsworth
Witnessed By	Z. Fisher

Borehole Record			Tubing Record		
Run Number	Bit	From	To	Size	Weight
	8.75"	Surface	12070 FT		From
					To

Casing Record	Size	Wgt/Ft	Top	Bottom
Surface String	9.625"	36	Surface	3040.3 FT
Prot. String	4.5"	11.6	Surface	12054.9 FT
Production String				
Liner				

<<<< Fold Here >>>>

All interpretations are opinions based on inferences from electrical or other measurements and we cannot and do not guarantee the accuracy or correctness of any interpretation, and we shall not, except in the case of gross or willful negligence on our part, be liable or responsible for any loss, costs, damages, or expenses incurred or sustained by anyone resulting from any interpretation made by any of our officers, agents or employees. These interpretations are also subject to our general terms and conditions set out in our current Price Schedule.

Comments

Log ran as per customer request.  
Depth referenced to Kelly Bushing @ 30FT  
Marker Joint from 7946 FT - 7956 FT  
Log ran from 11946 FT to 7550 FT  
Log ran with 0 PSI surface induced pressure.

Thank you for choosing The Wireline Group!!!

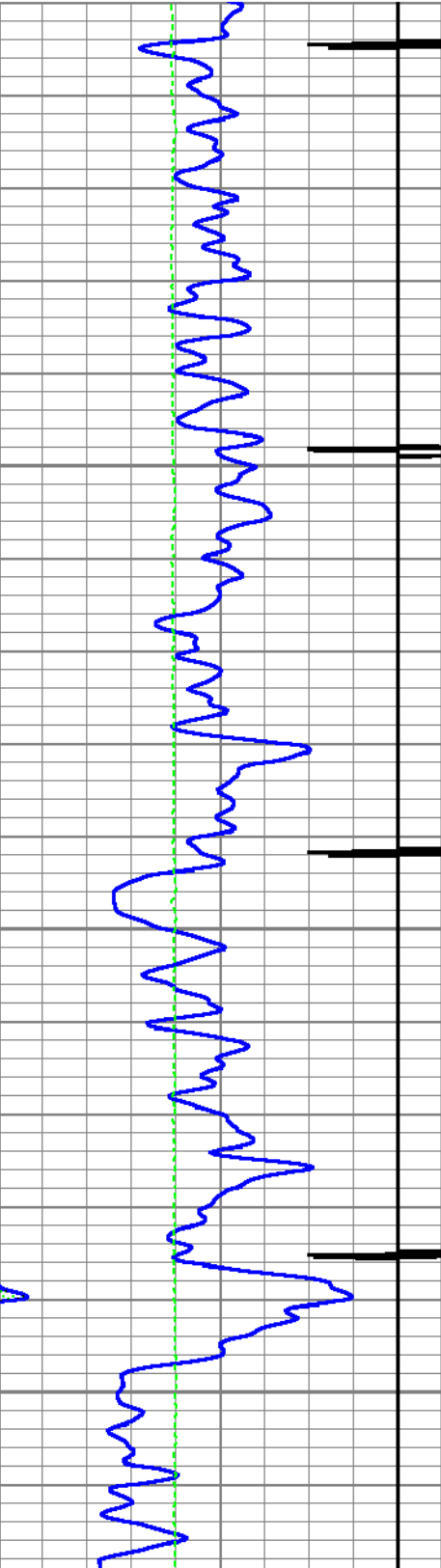


Main Pass 5" = 100'

Database File caerus\_bju b26 fed 11c-26-496\_rcbl\_cnl\_10-10-2022.db  
Dataset Pathname main  
Presentation Format twg\_cnl  
Dataset Creation Tue Oct 11 07:23:15 2022  
Charted by Depth in Feet scaled 1:240

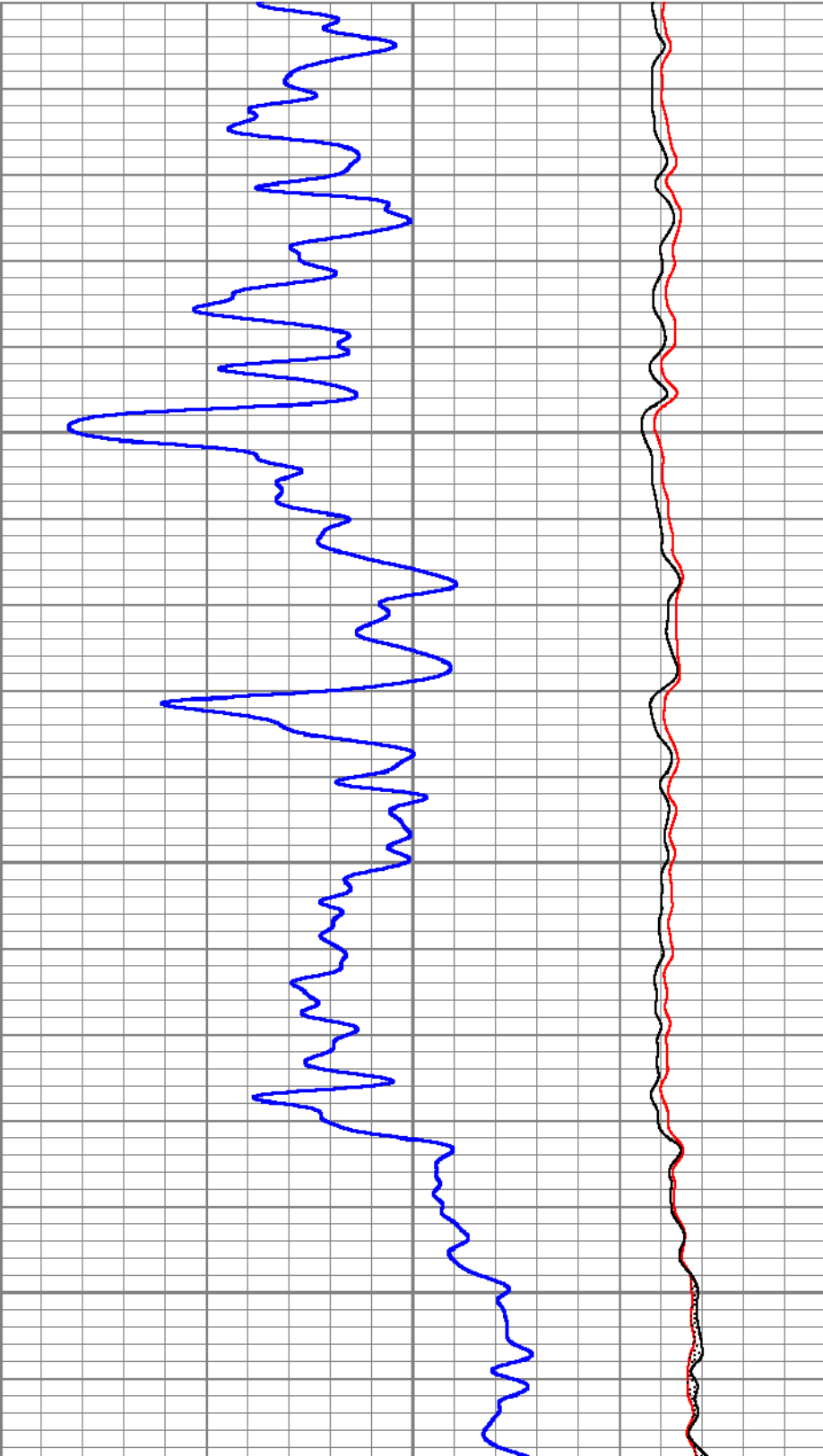
0	GR (GAPI)	200
9	CCL	-1
0	Line Tension (lb)	4000

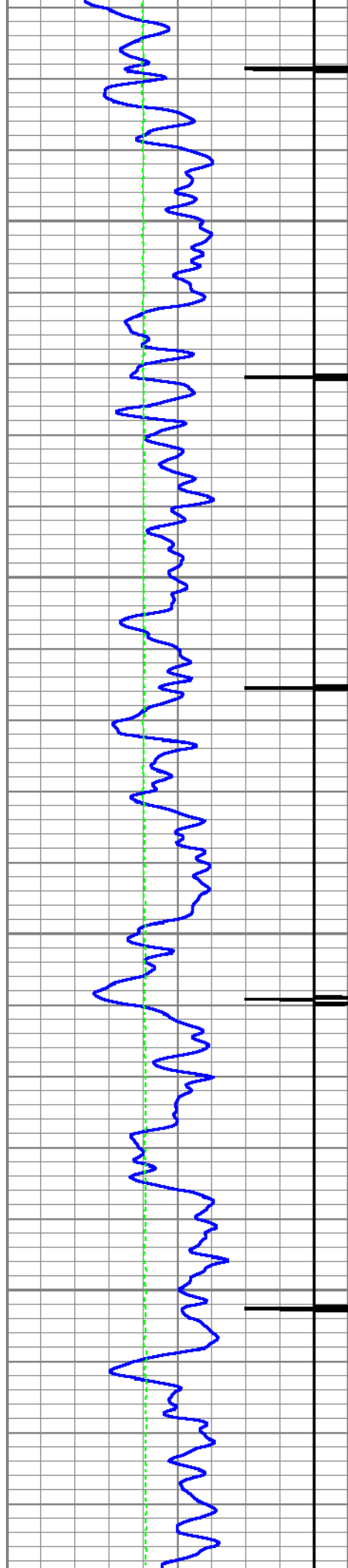
0.3	CNPOR (pu)	-0.1
0	CNLSC (cps)	1500
0	CNSSC (cps)	7000



7600

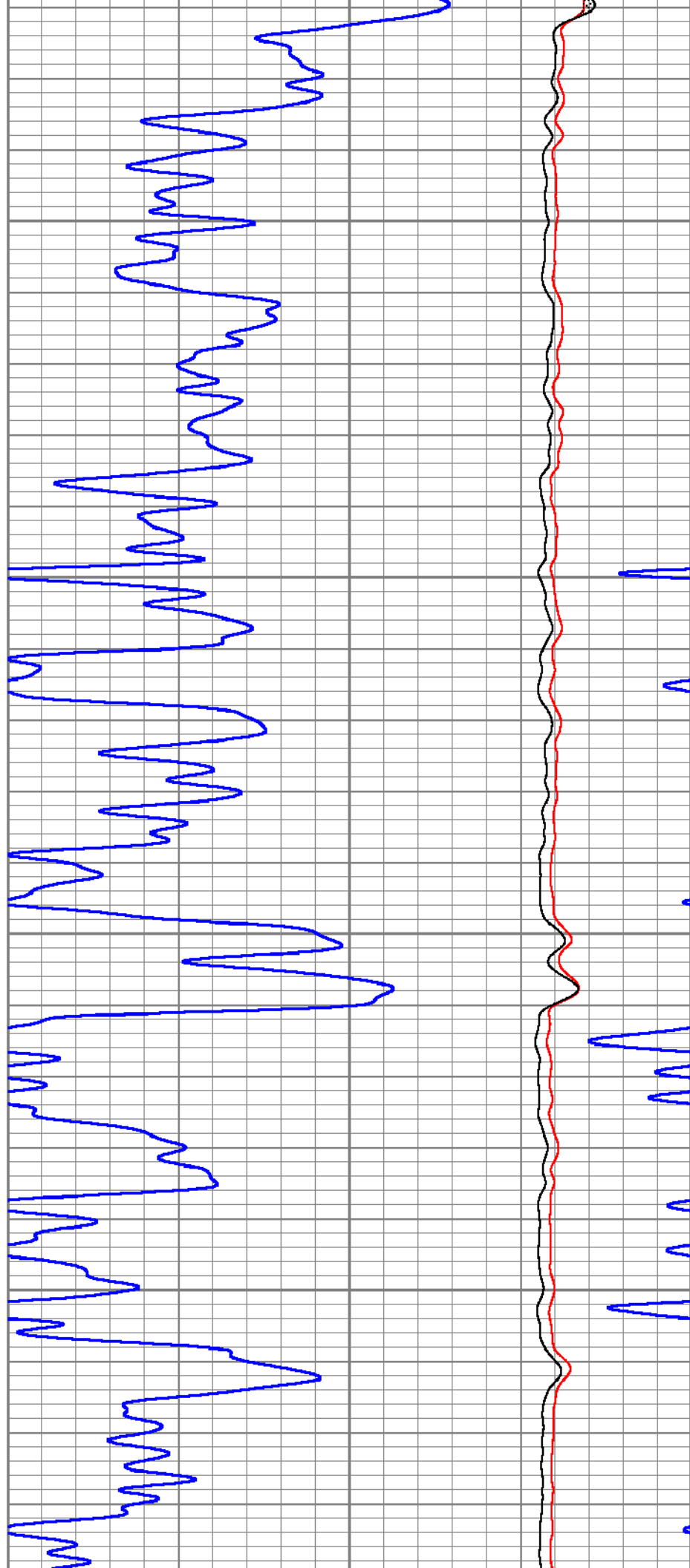
7700

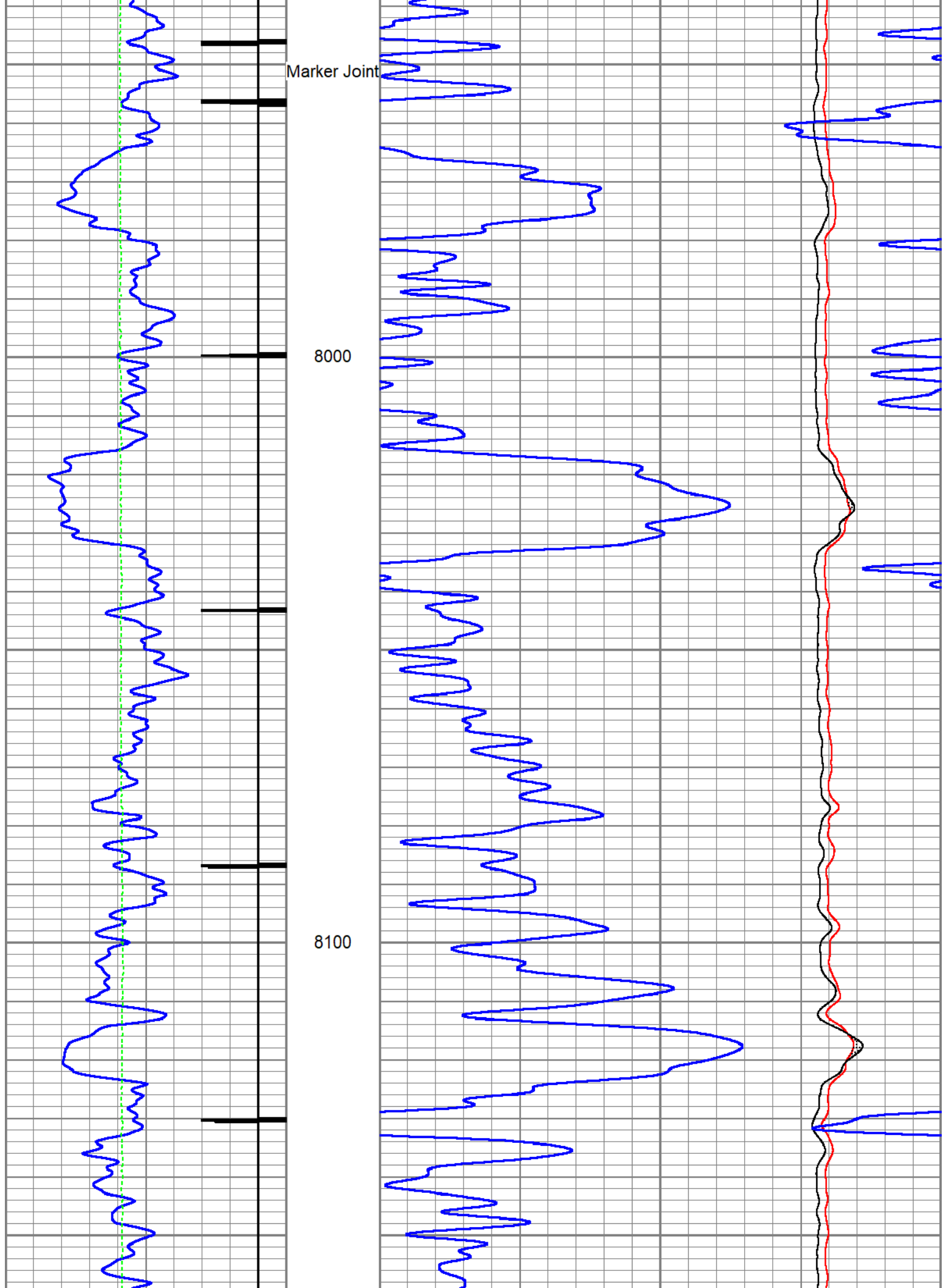


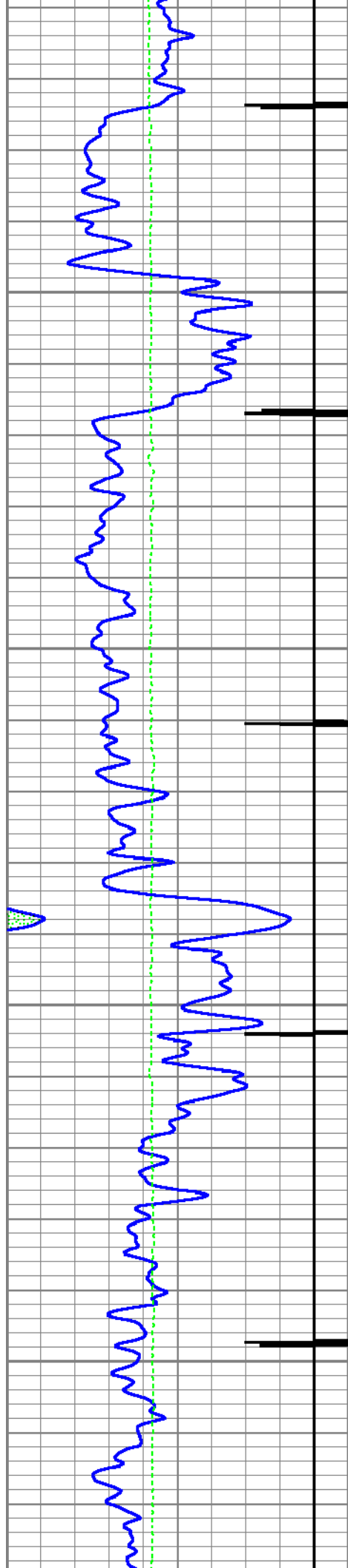


7800

7900

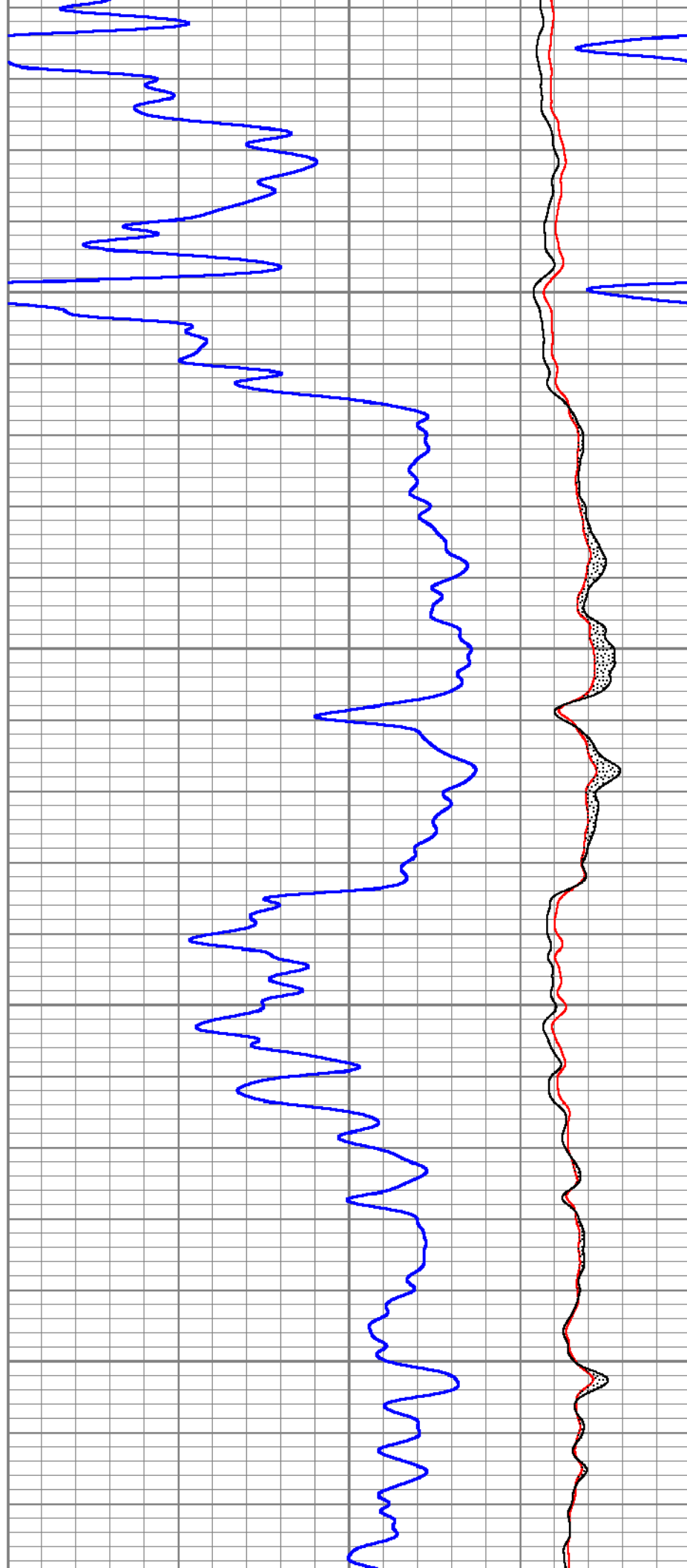


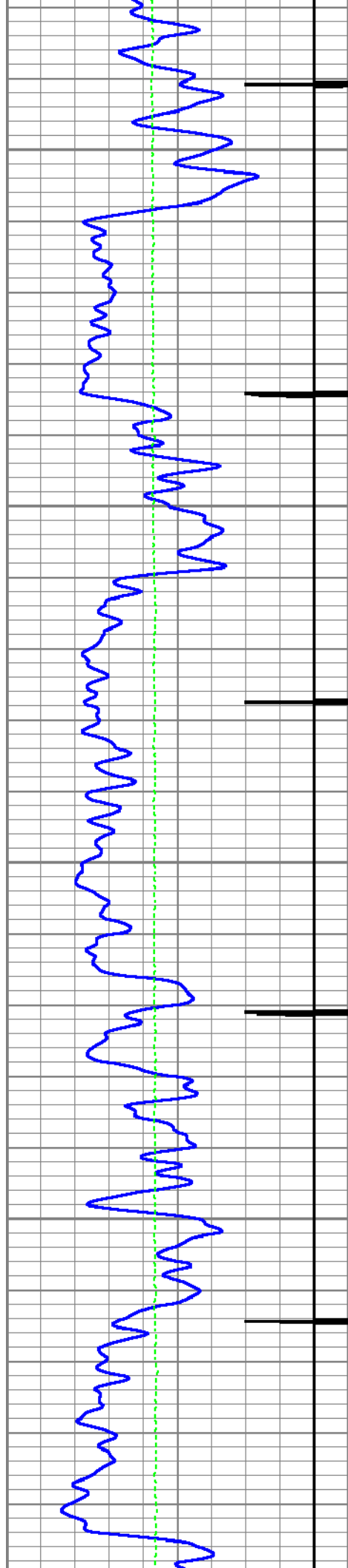




8200

8300

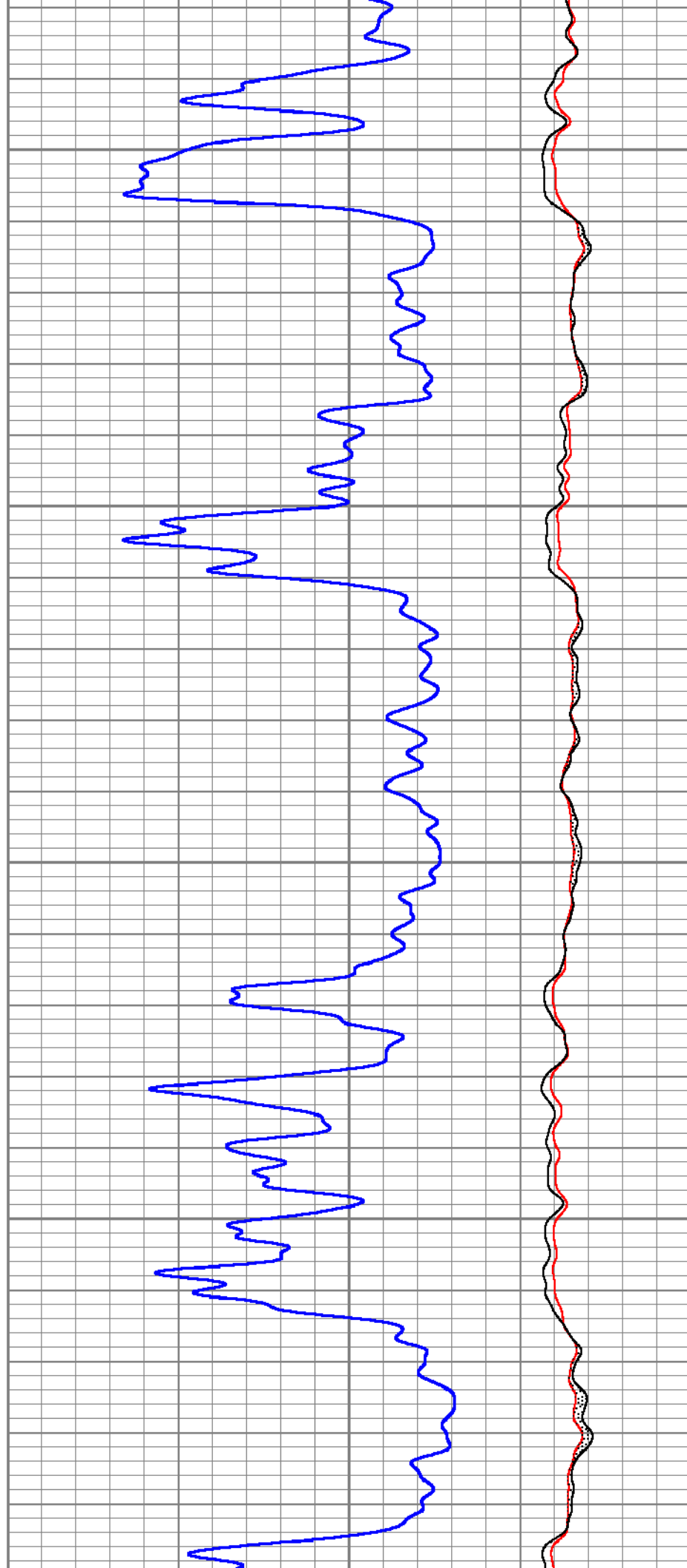




8400

8500

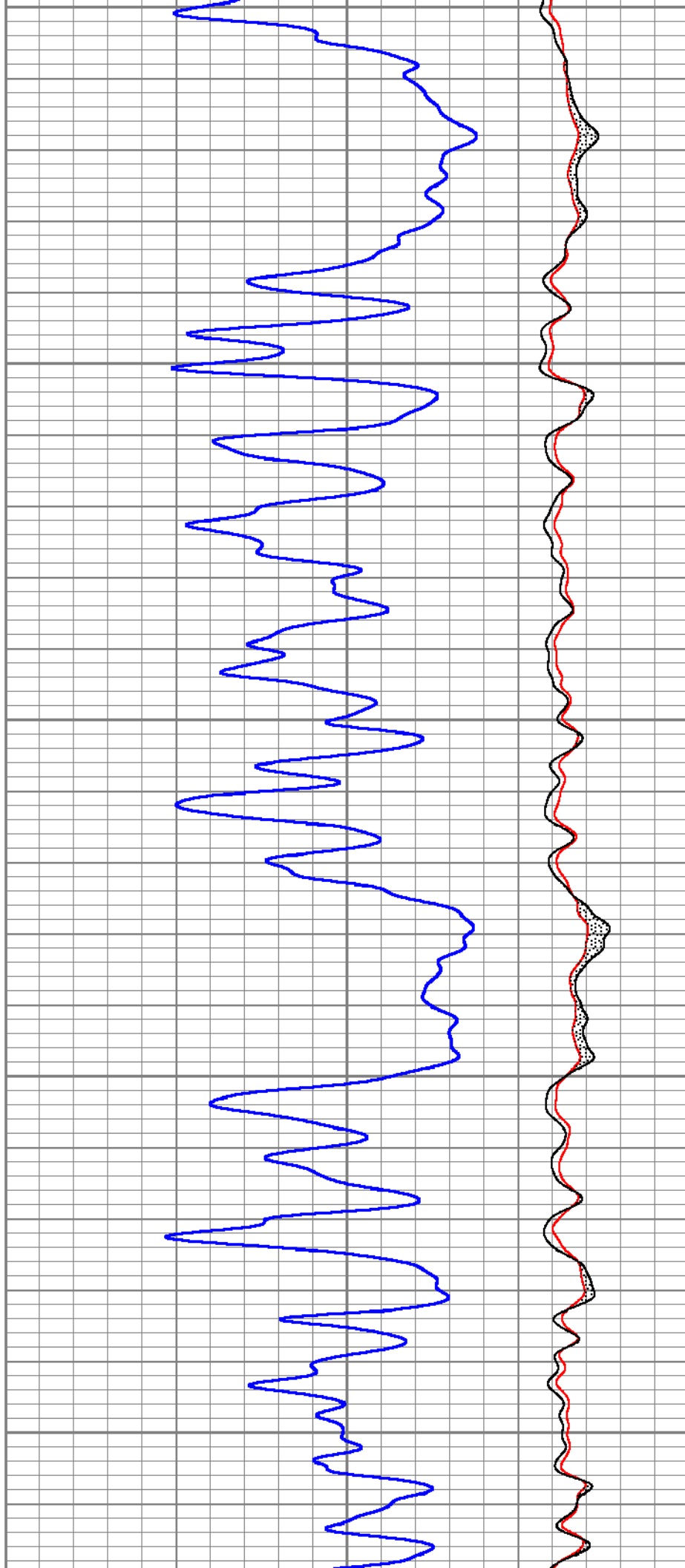
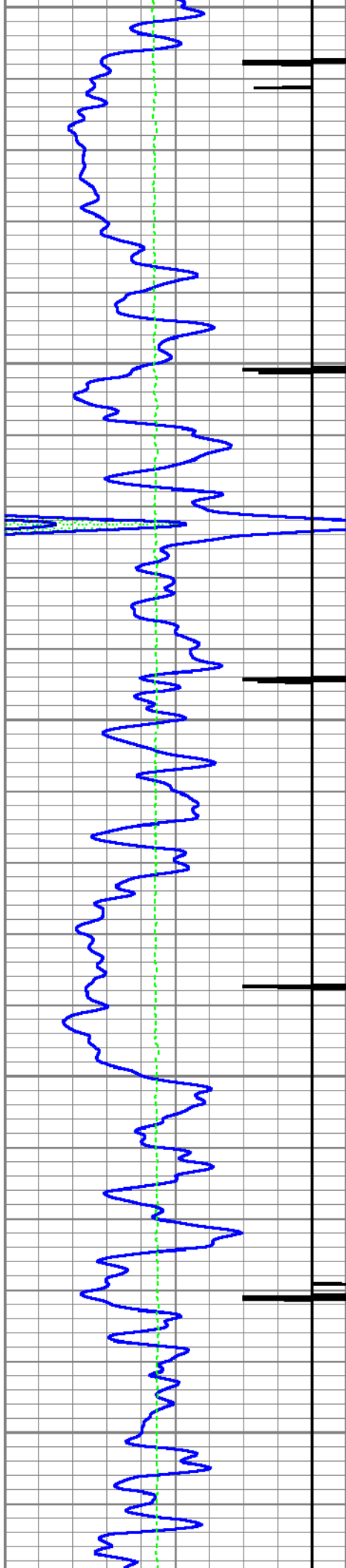
8600

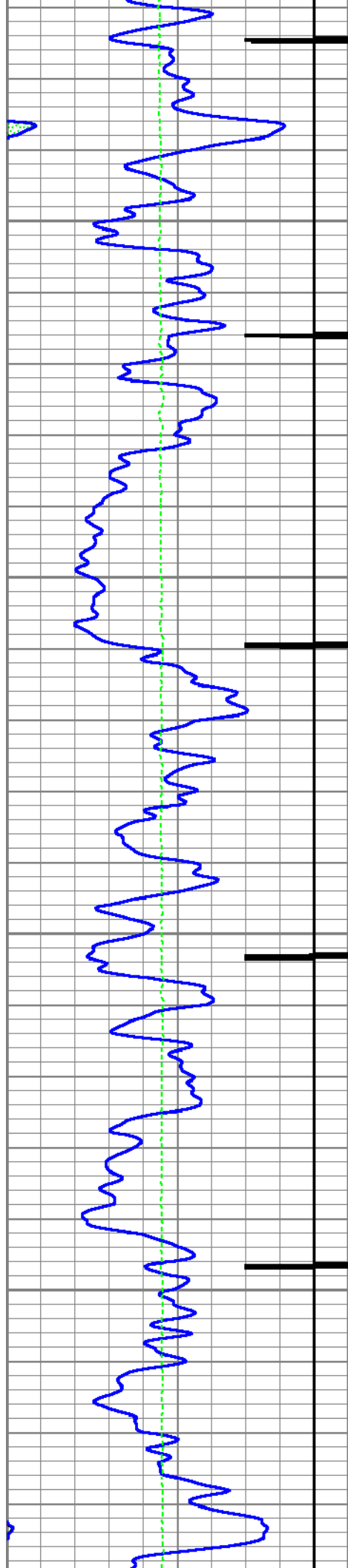


8600

8700

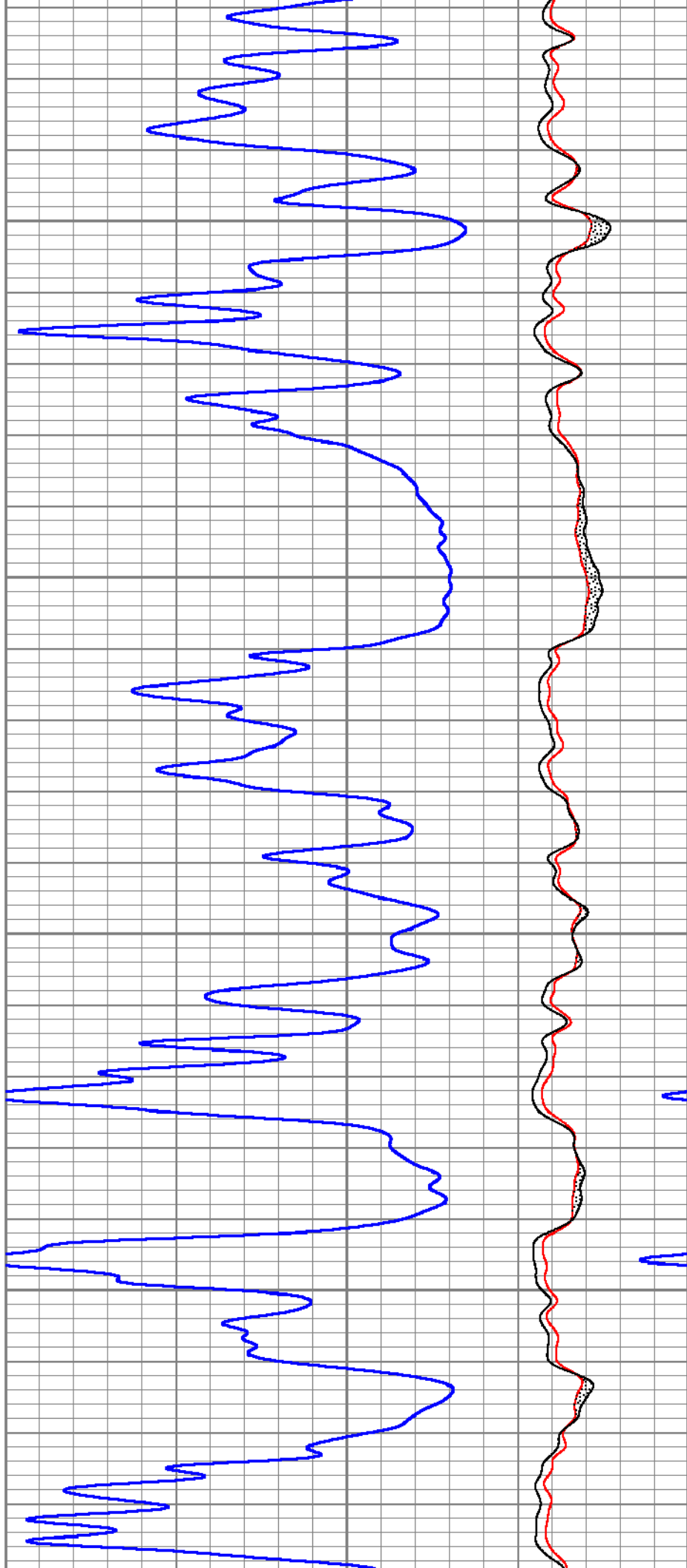
8800



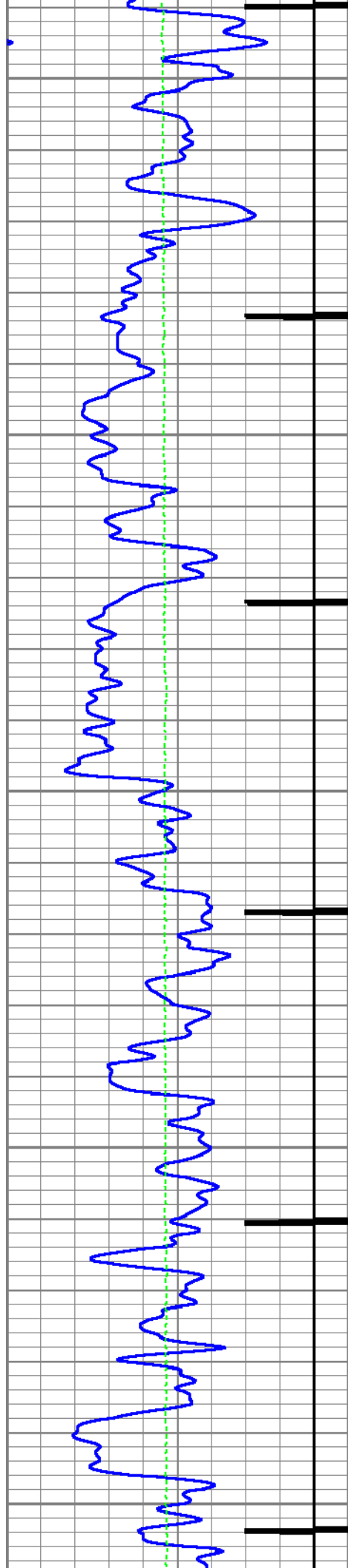


8900

9000

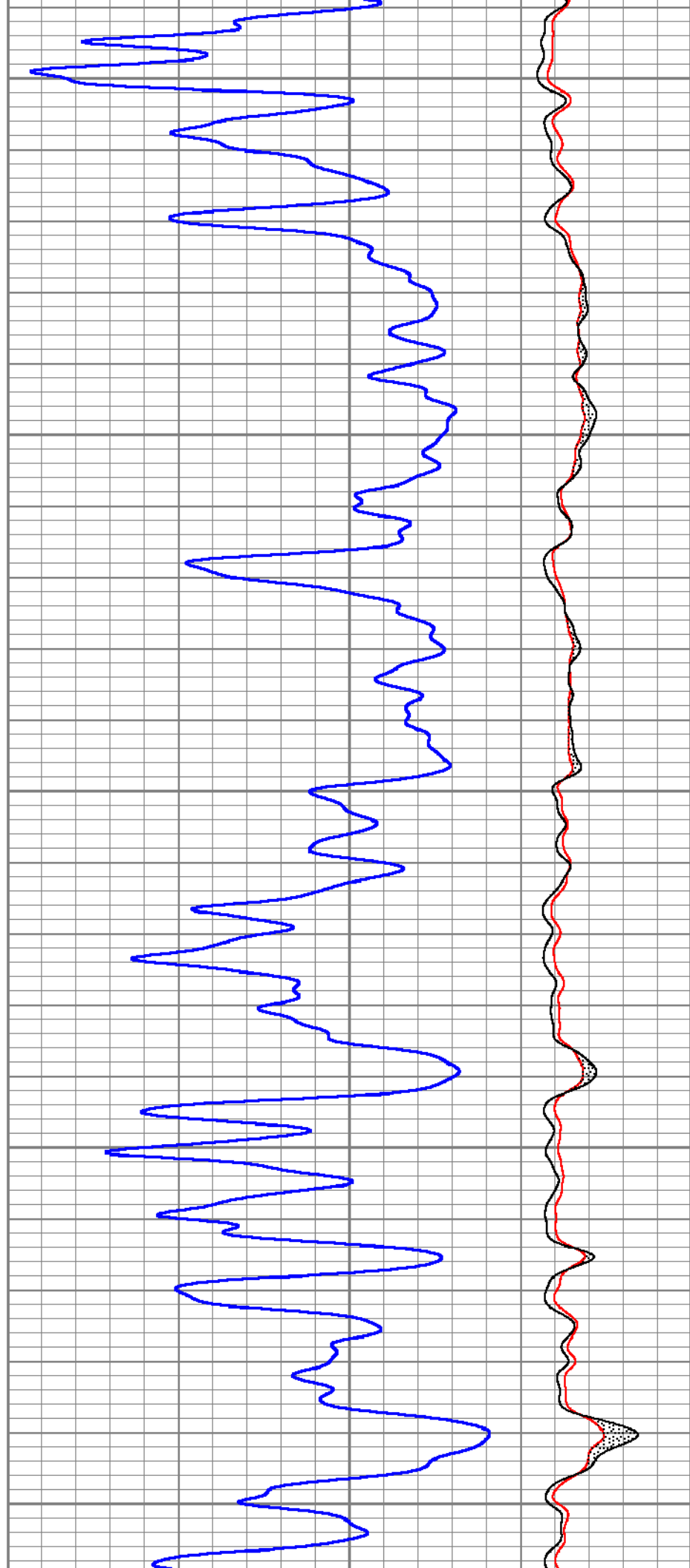


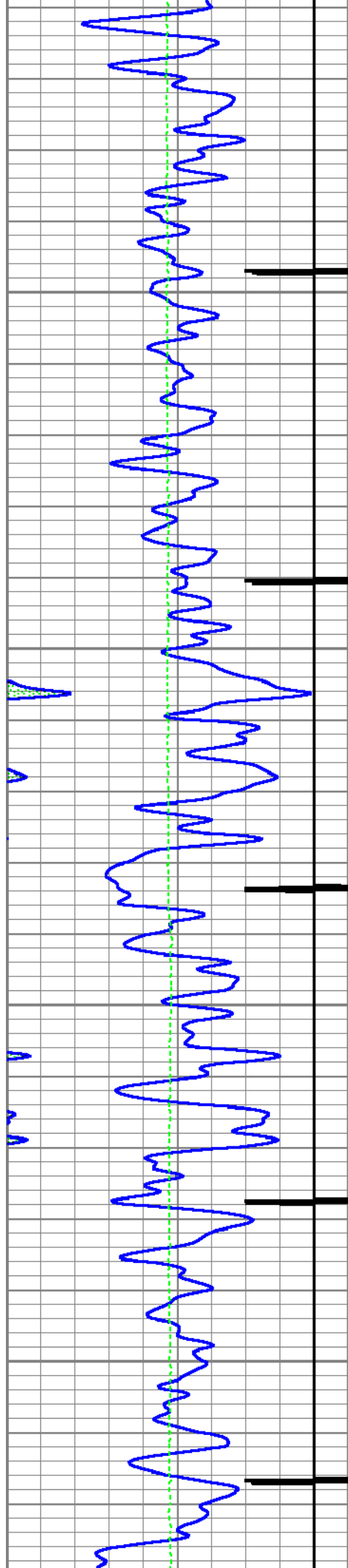




9100

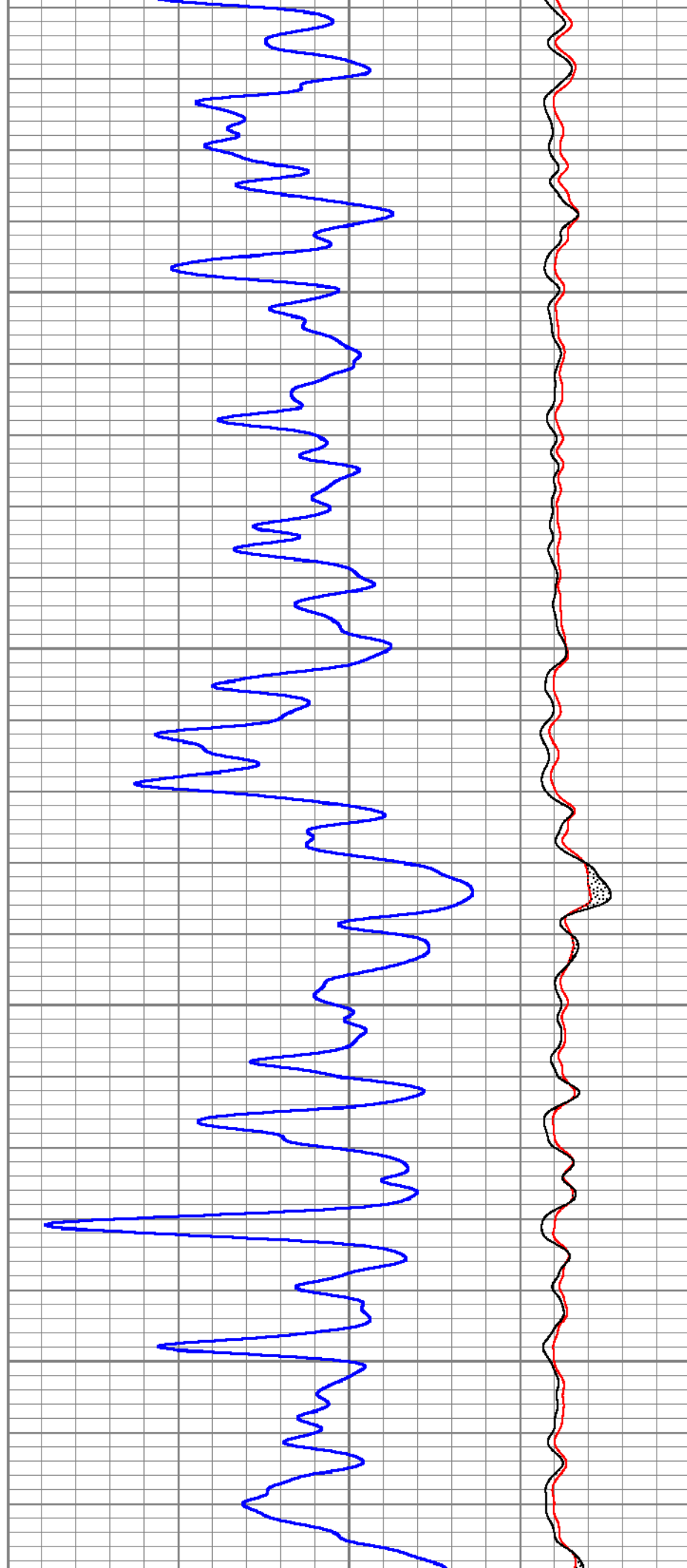
9200

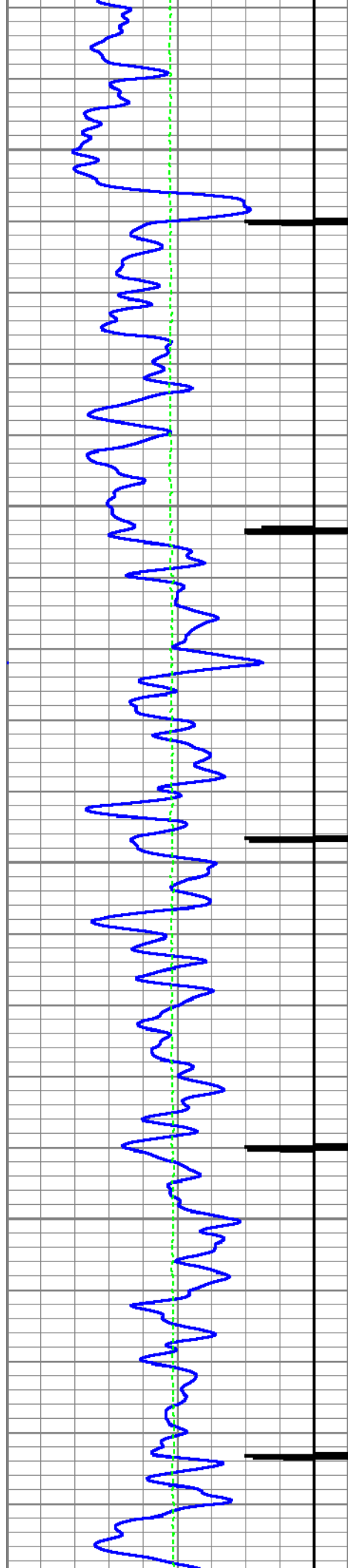




9300

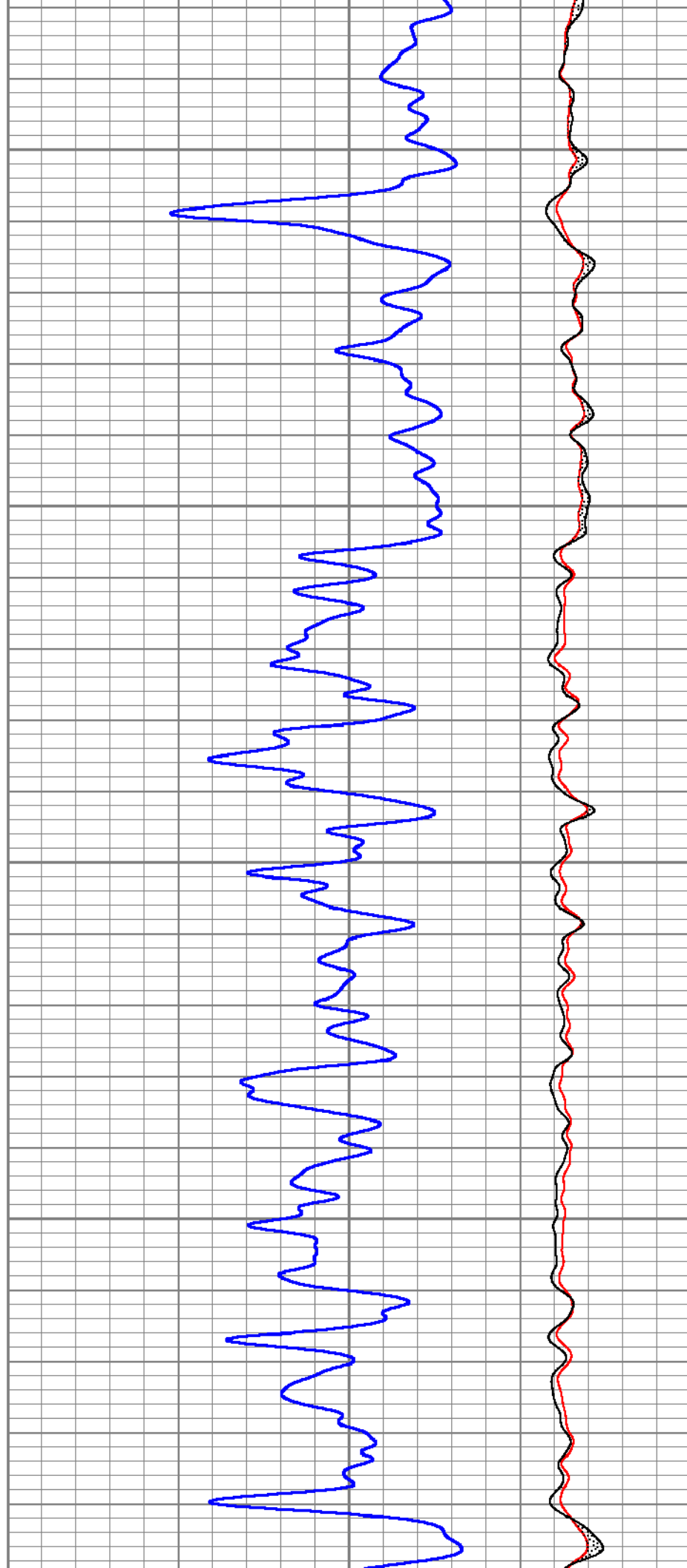
9400





9500

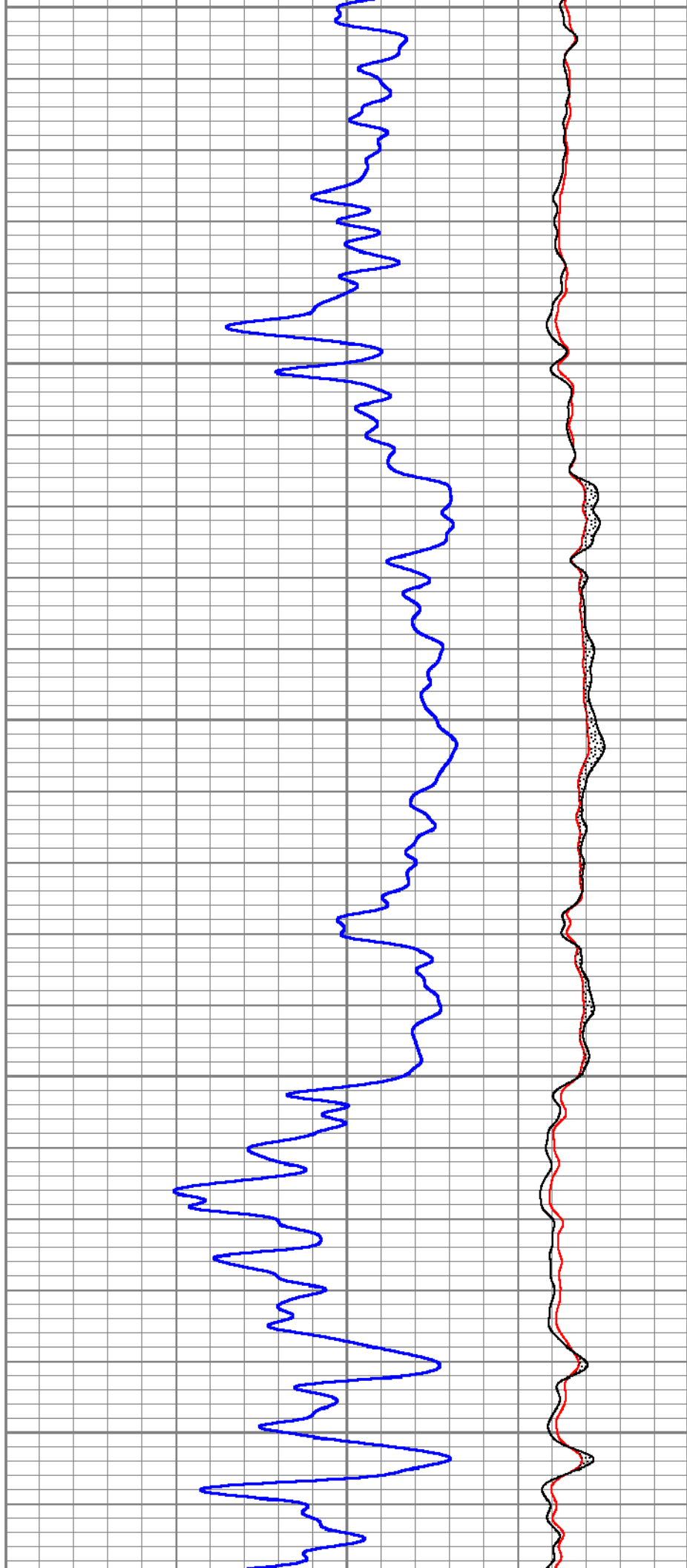
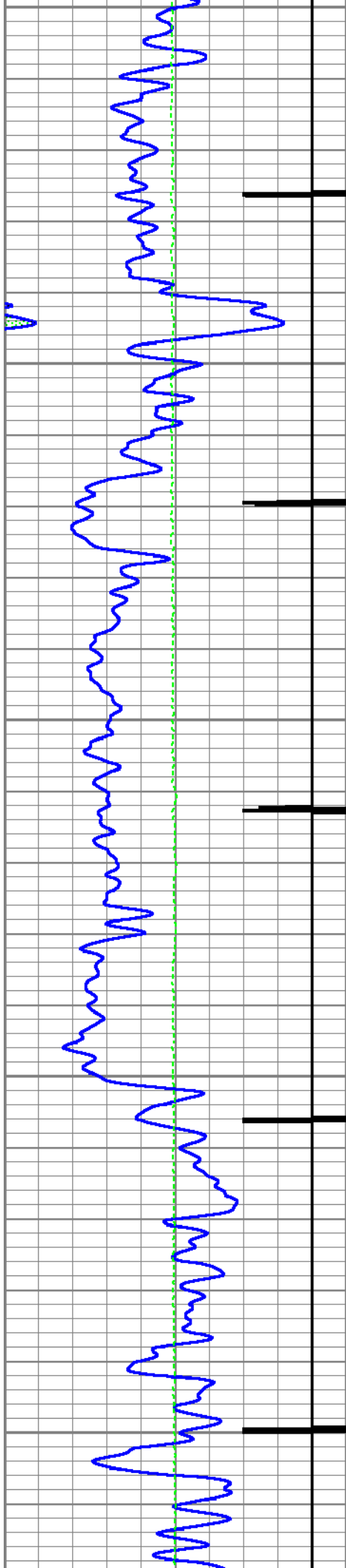
9600

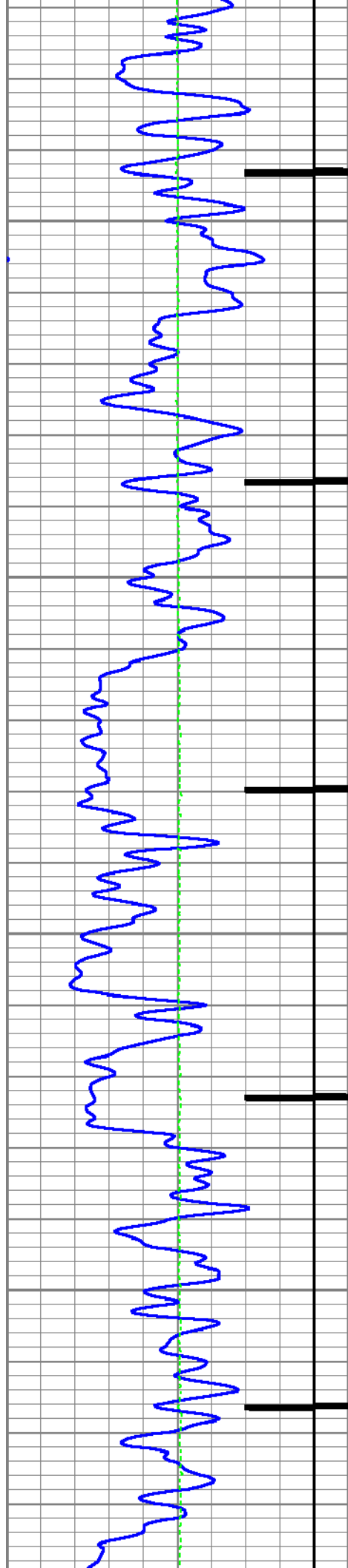


9700

9800

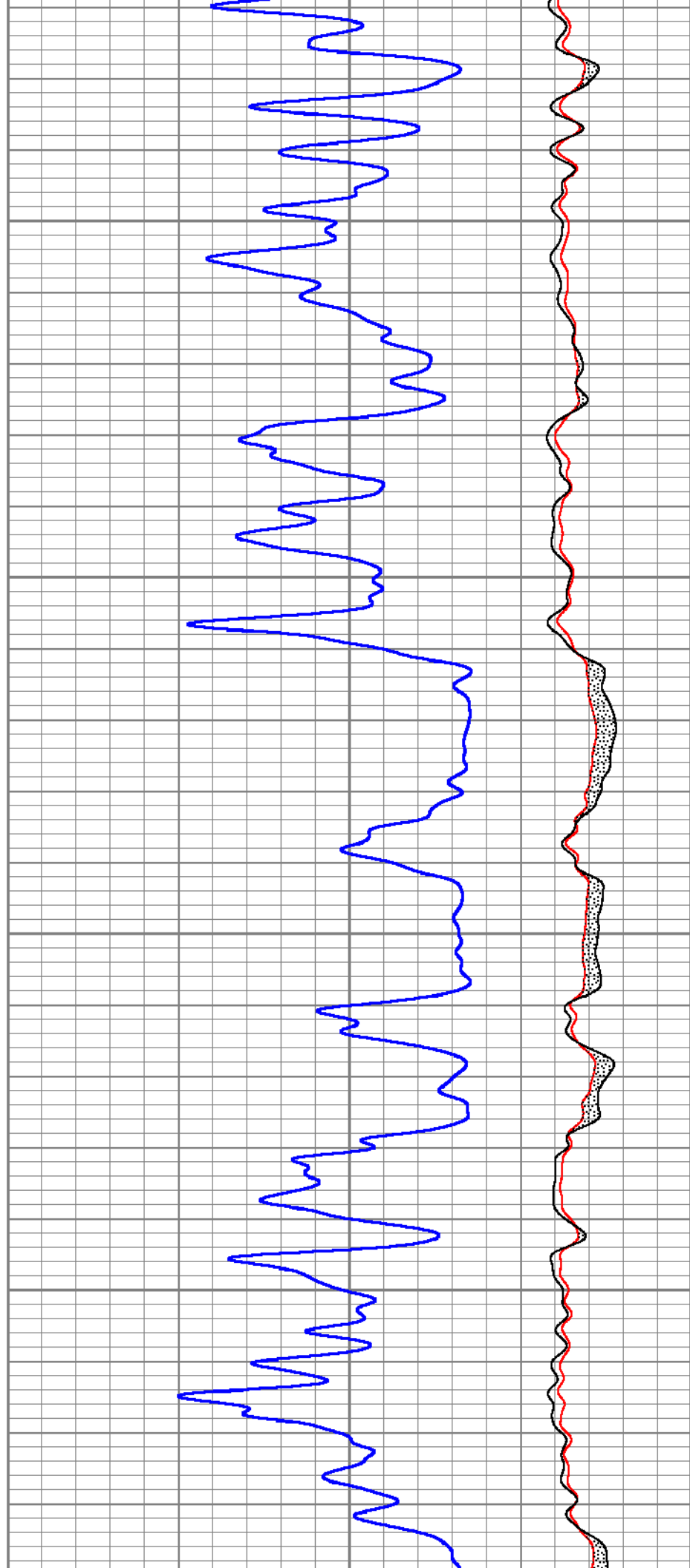
9900

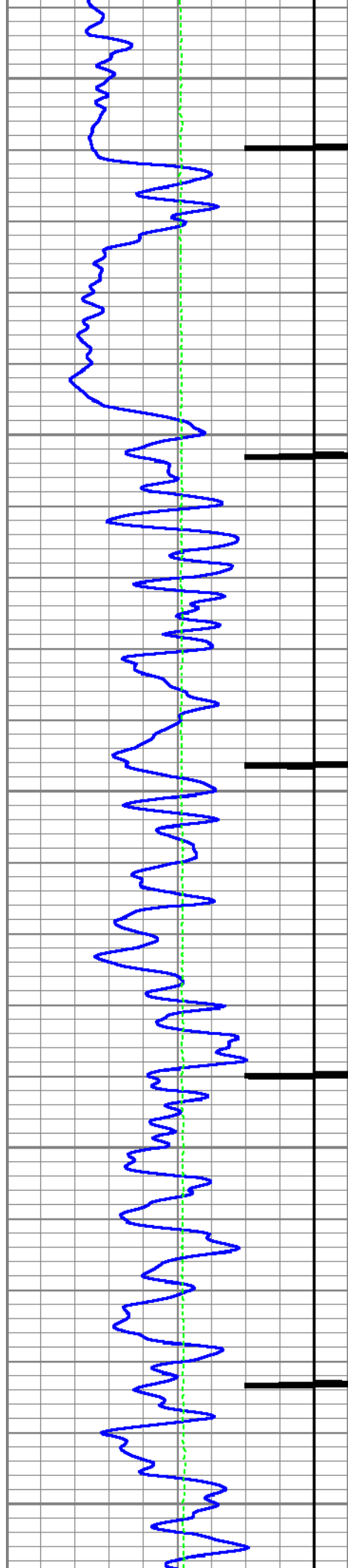




10000

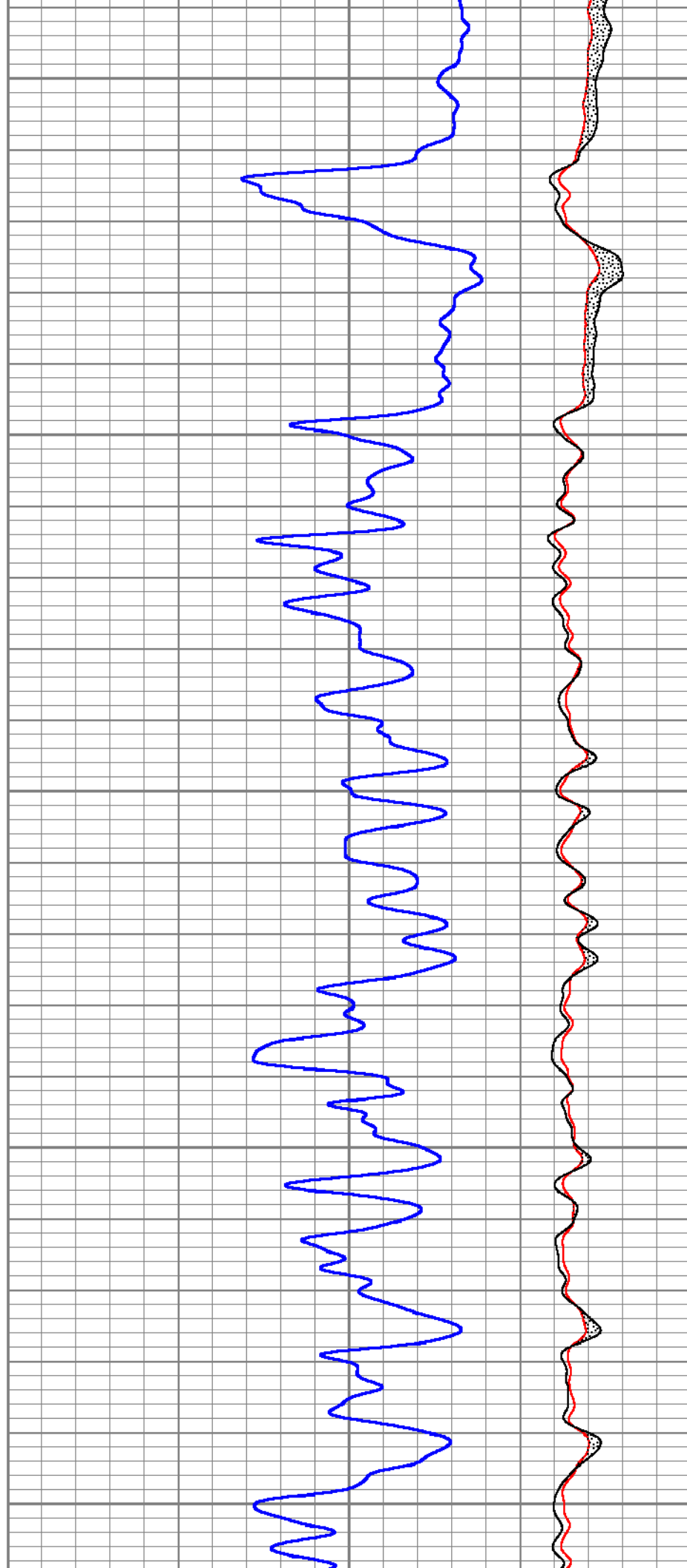
10100

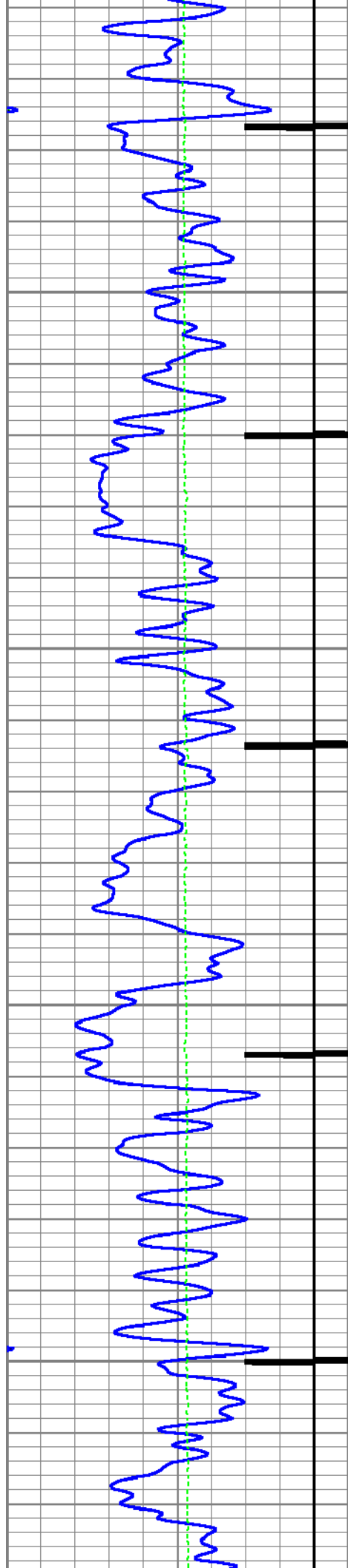




10200

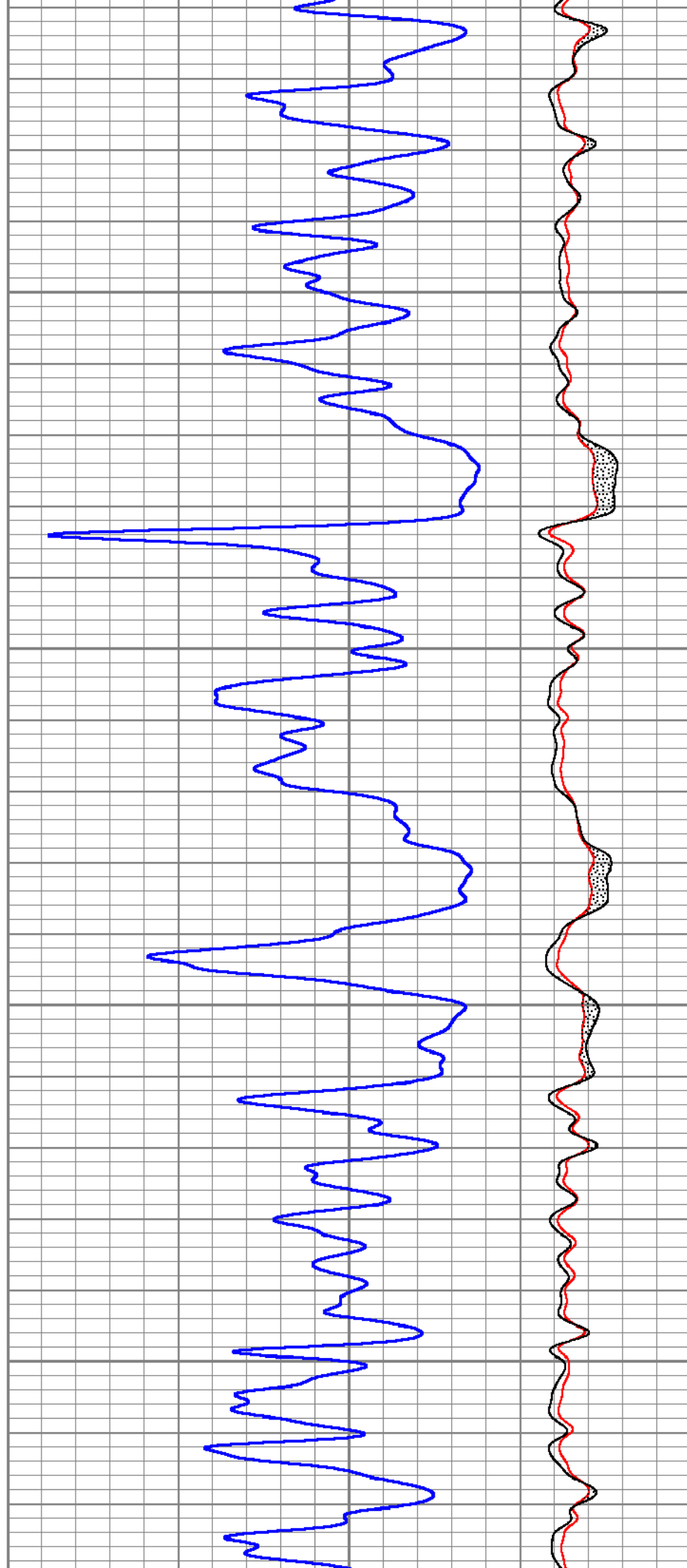
10300

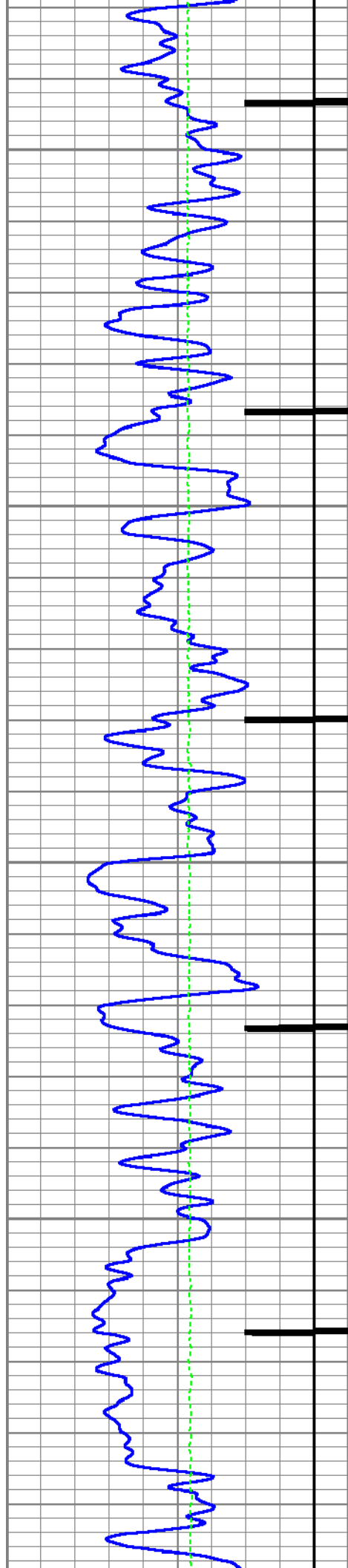




10400

10500

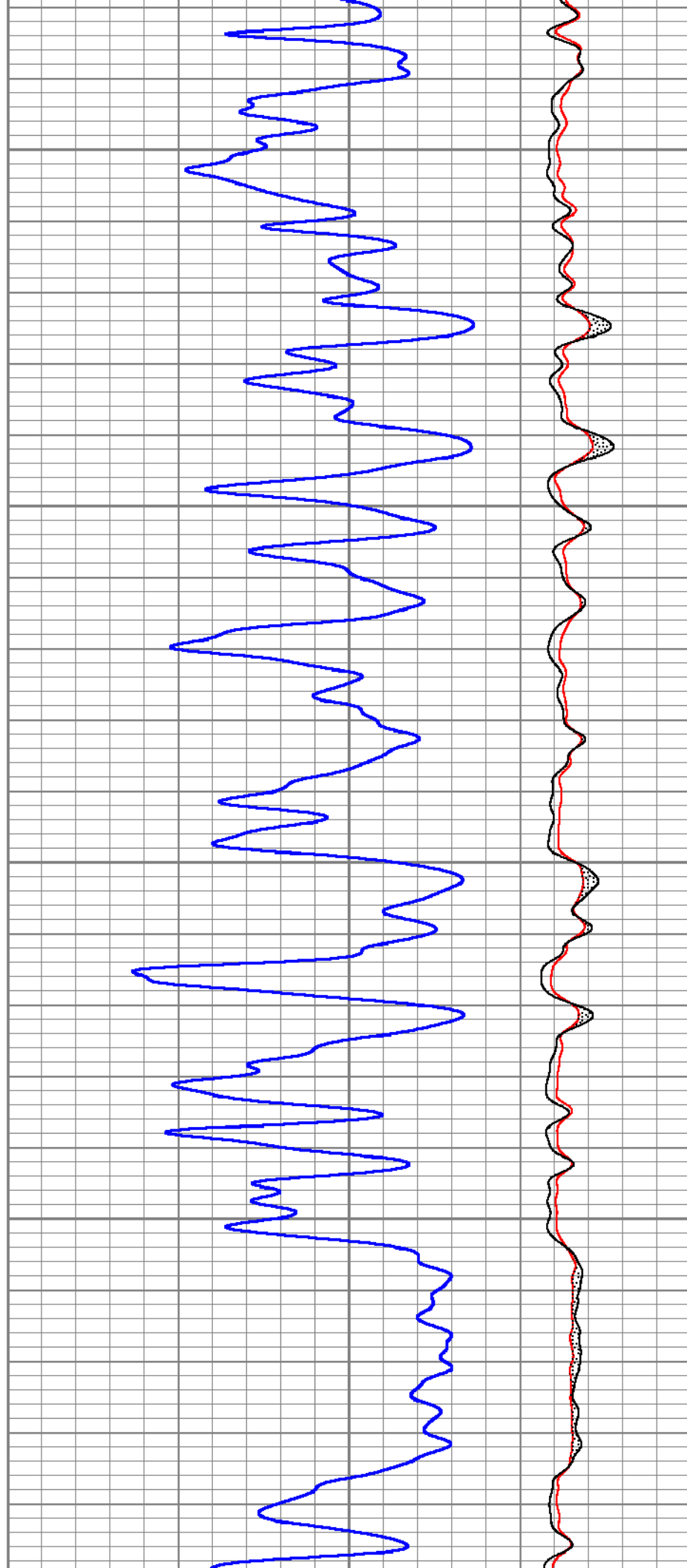




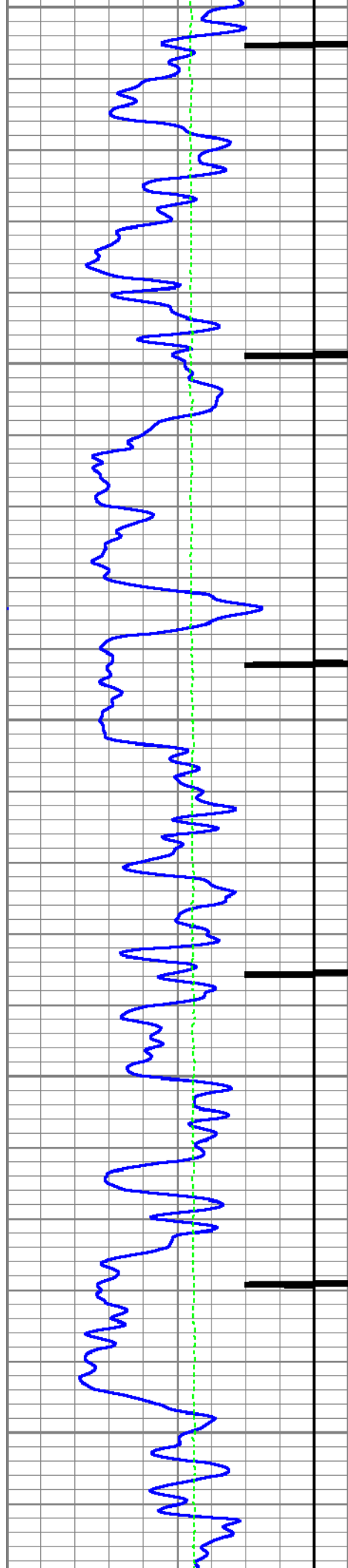
10600

10700

10800



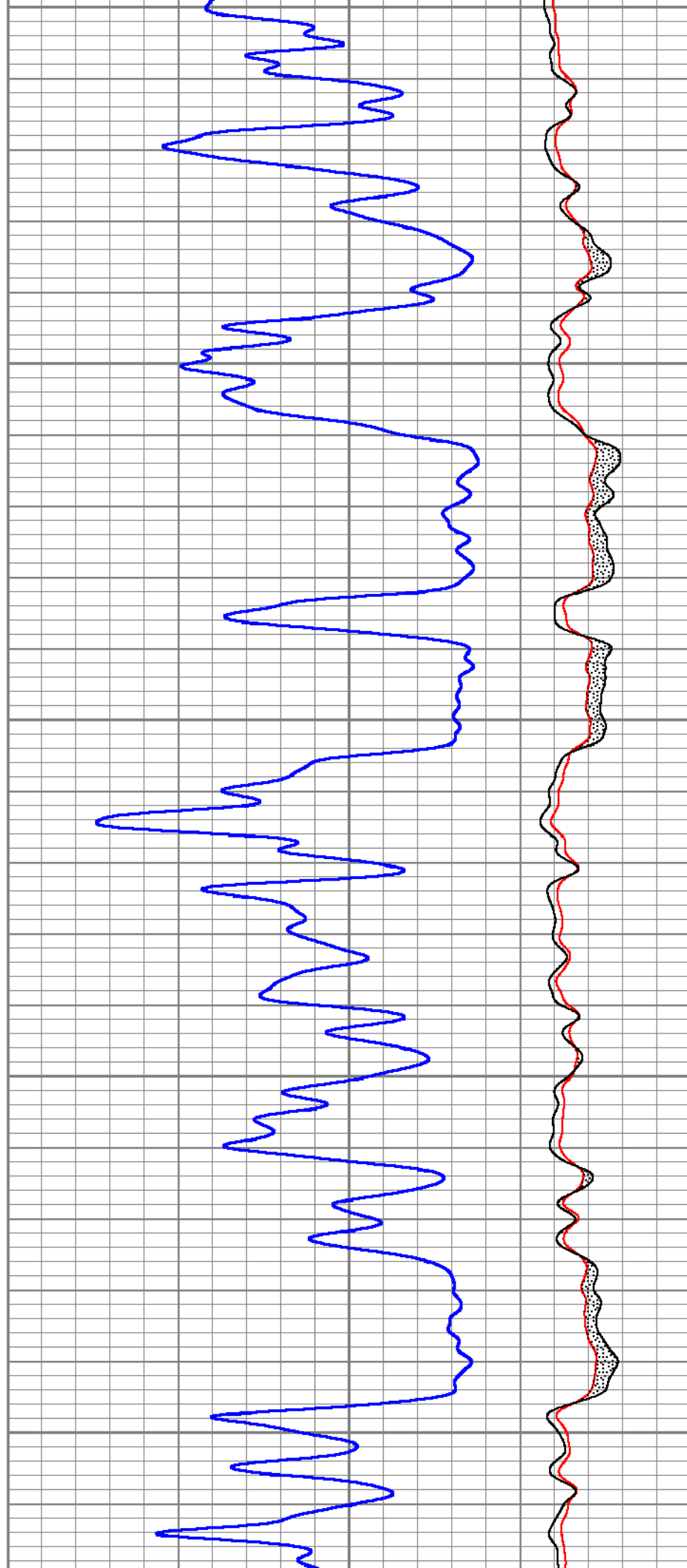


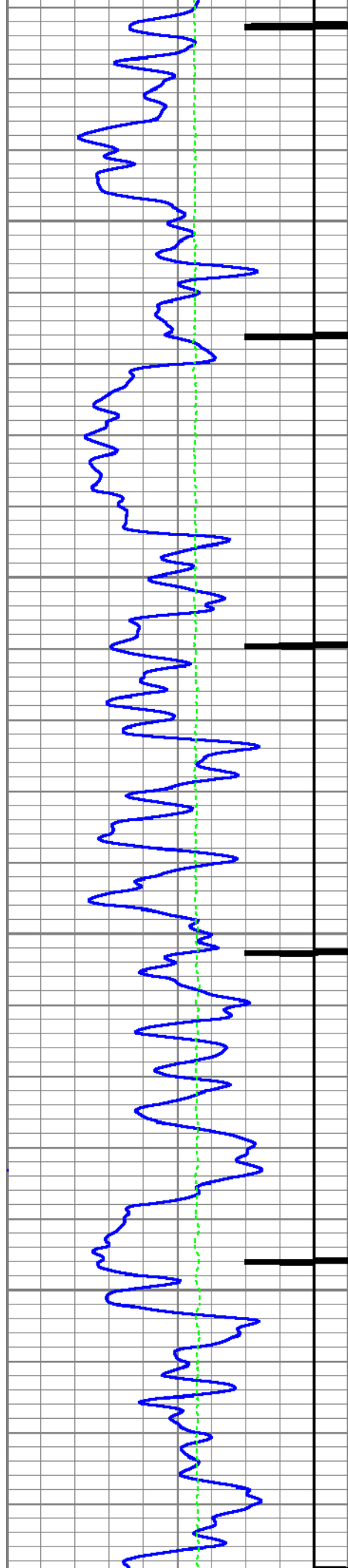


10800

10900

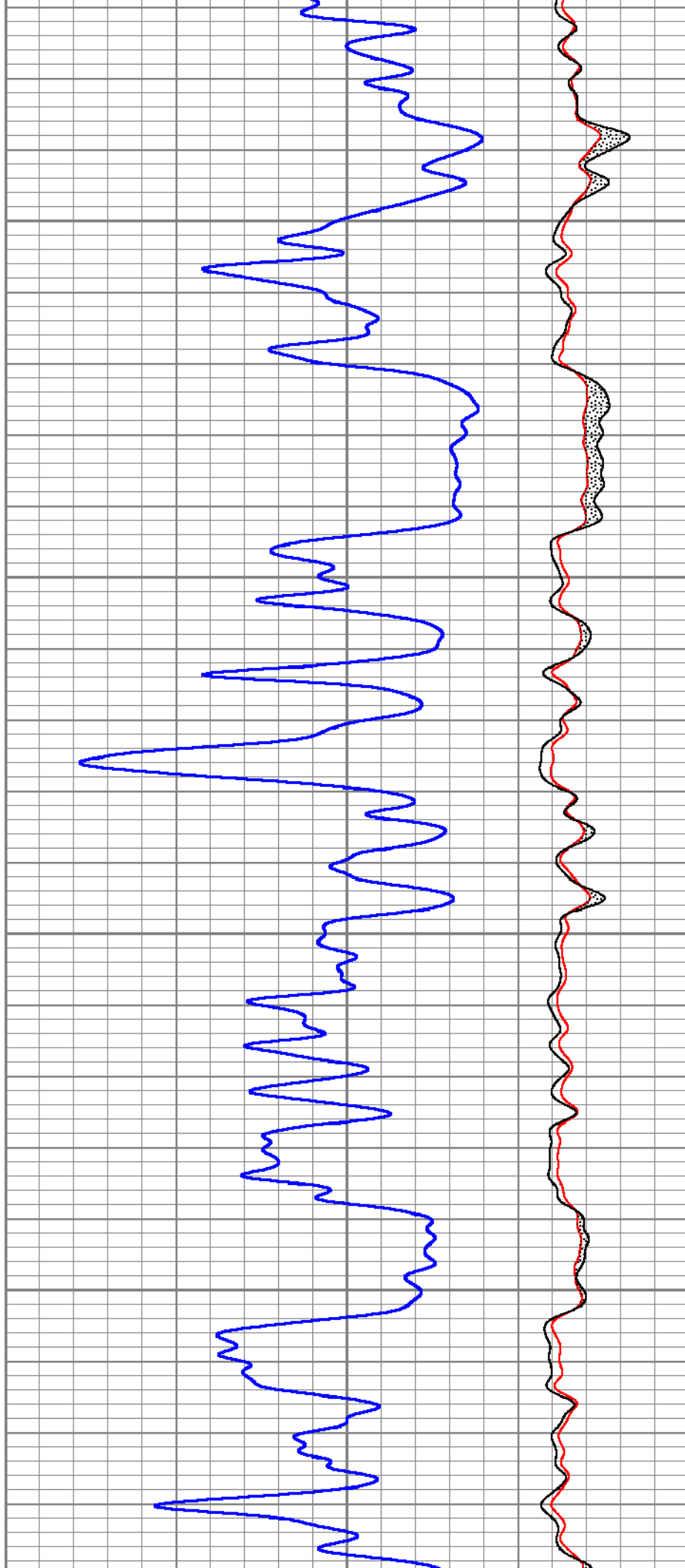
11000

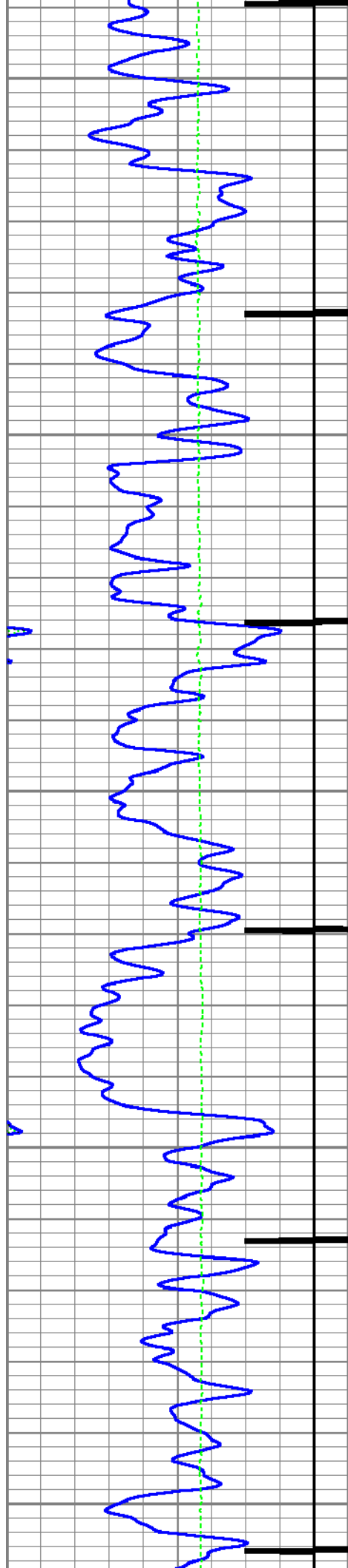




11100

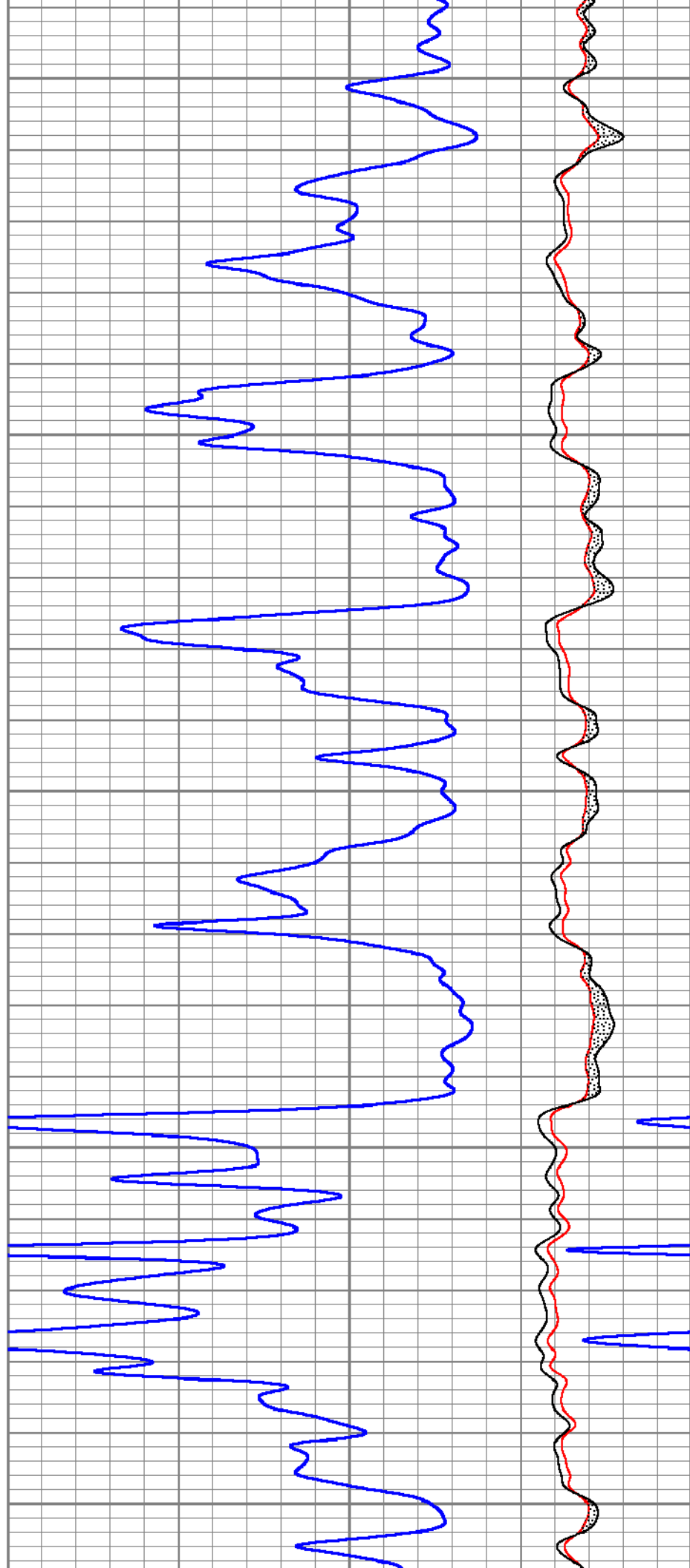
11200

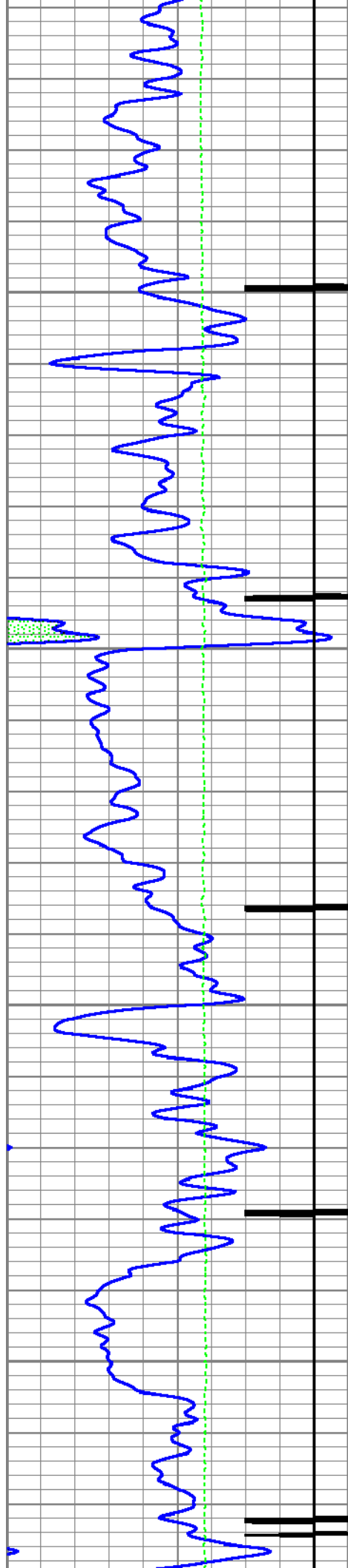




11300

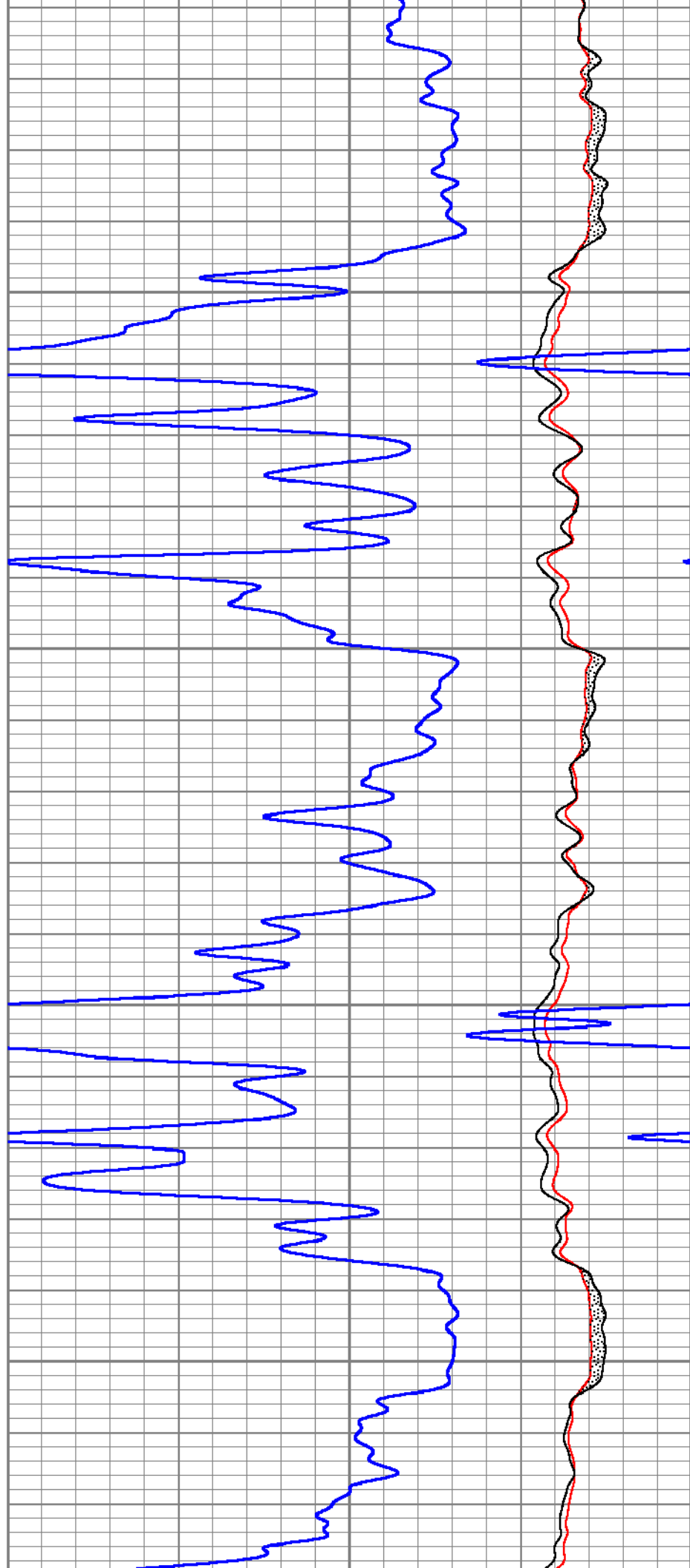
11400

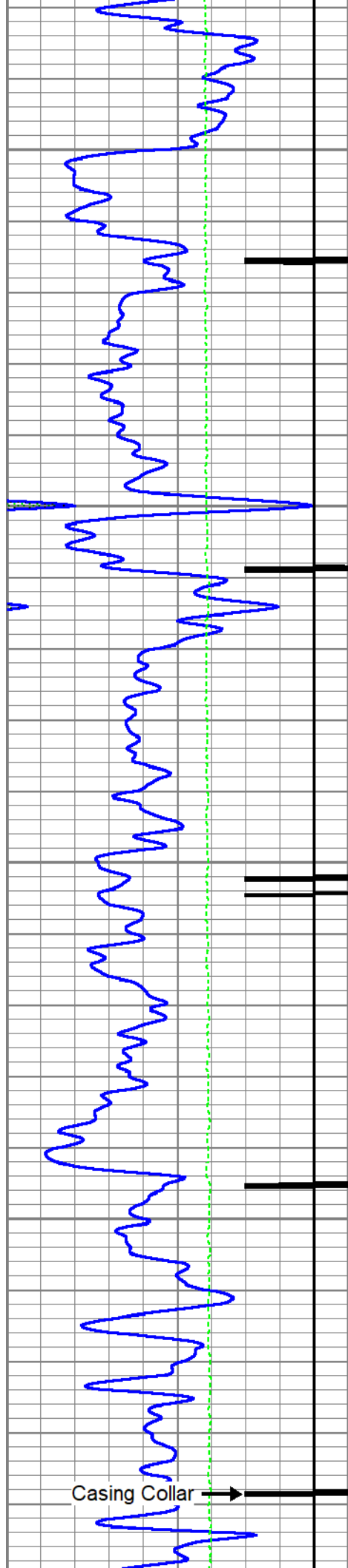




11500

11600



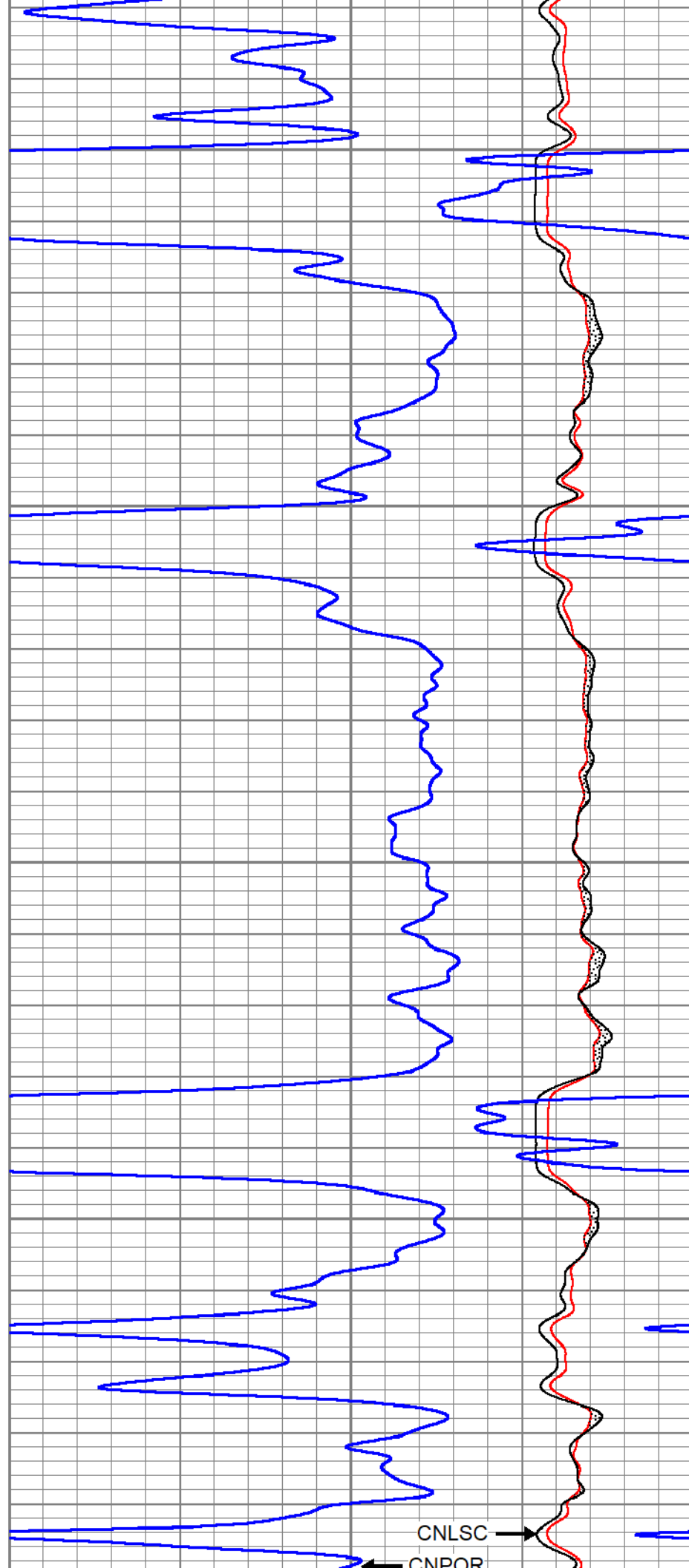


11700

11800

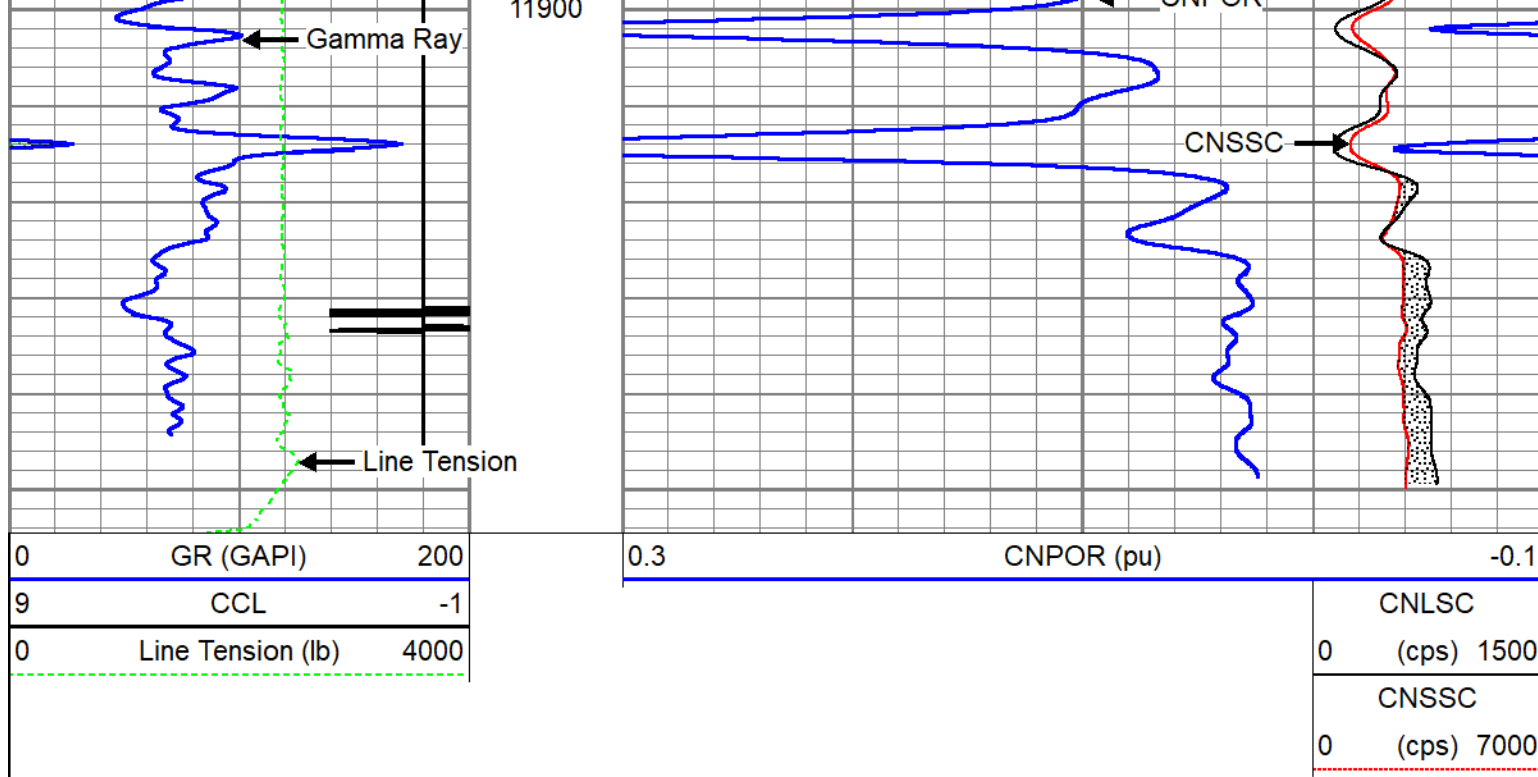
Casing Collar →


11900



← CNLSC

← CNPOR



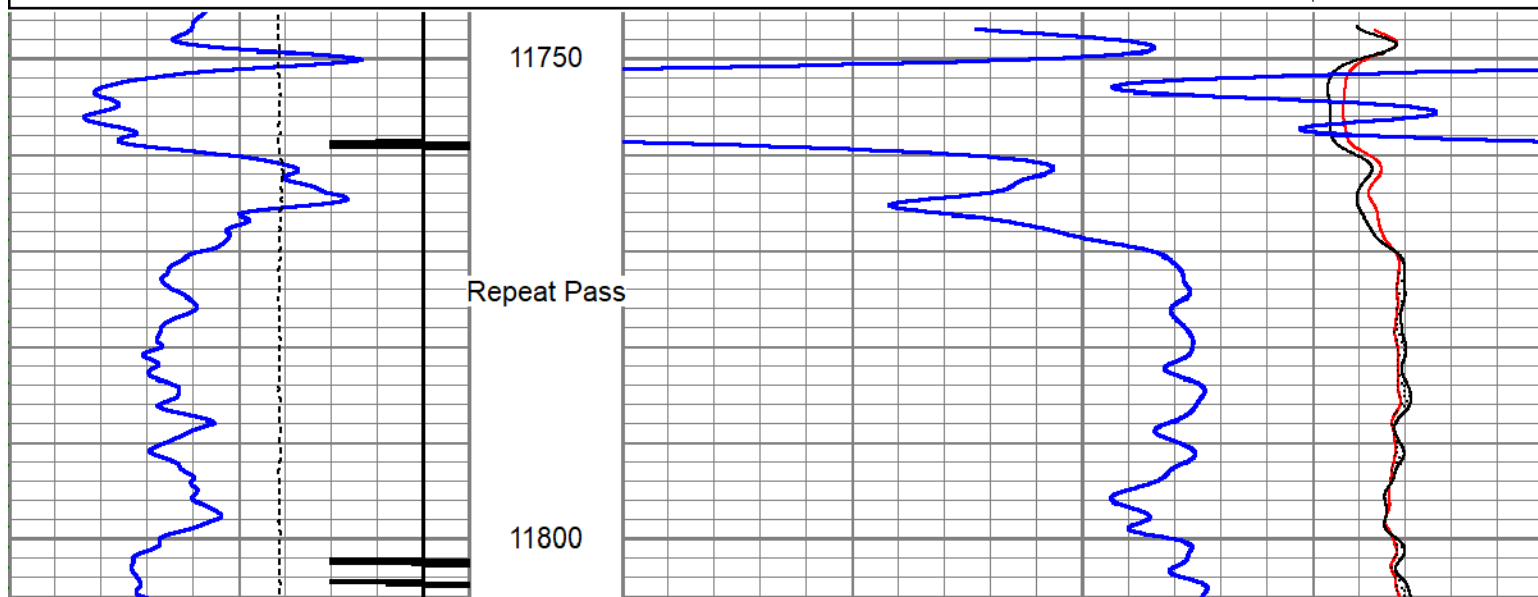


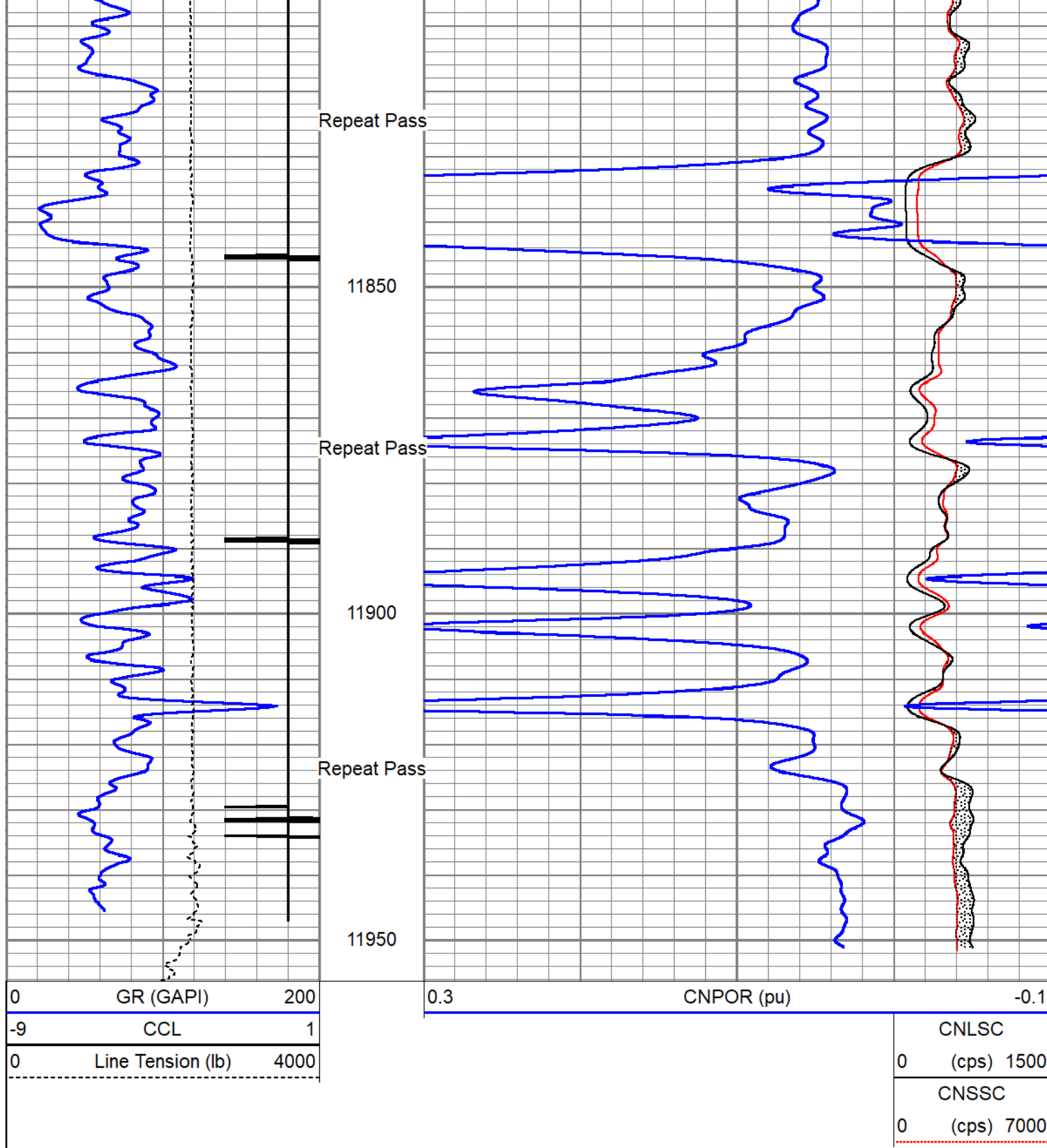
## Repeat Pass 5" = 100'

Database File	caerus_bju b26 fed 11c-26-496_rcbl_cnl_10-10-2022.db
Dataset Pathname	repeat
Presentation Format	cnl
Dataset Creation	Tue Oct 11 07:16:48 2022
Charted by	Depth in Feet scaled 1:240

0	GR (GAPI)	200
-9	CCL	1
0	Line Tension (lb)	4000

0.3	CNPOR (pu)	-0.1
0	CNLSC (cps)	1500
0	CNSSC (cps)	7000





Calibration Report	
Database File	caerus_bju b26 fed 11c-26-496_rcbl_cnl_10-10-2022.db
Dataset Pathname	main
Dataset Creation	Tue Oct 11 07:23:15 2022
Compensated Neutron Calibration Report	
Model:	CNT - 275Dig
Serial Number:	FW1409-35

SHOP CALIBRATION		Thu Mar 31 15:47:13 2022		
	Cal Tube	Units		
Tank Ratio	11.6940	SS/LS		
LS Detector	68.71	cps		
SS Detector	748.49	cps		
Tool Ratio	10.8929	SS/LS		
Tool Gain	1.0735	----		

PRE-SURVEY VERIFICATION				
	SS Detector	LS Detector	Measured (p.u.)	Target (p.u.)

POST-SURVEY VERIFICATION				
	SS Detector	LS Detector	Measured (p.u.)	Target (p.u.)

Gamma Ray Calibration Report				
------------------------------	--	--	--	--

Type / Serial:		Probe275dig / FW1403-104		
----------------	--	--------------------------	--	--

SHOP CALIBRATION		Thu Mar 31 15:29:33 2022			
	Counts/Sec.	Gain	Offset	Jig	Units
Background	64.8				cps
Calibrator	250.4				cps
		0.8888			GAPI/cps
PRIMARY VERIFICATION					
Background	0.0				cps
Calibrator	0.0				cps
Difference				0.0	GAPI
BEFORE SURVEY VERIFICATION					
Background	0.0				cps
Calibrator	0.0				cps
Difference				0.0	GAPI
AFTER SURVEY VERIFICATION					
Background	0.0				cps
Calibrator	0.0				cps
Difference				0.0	GAPI

Segmented Cement Bond Log Calibration Report				
--	--	--	--	--

Serial Number:	FW1311-19			
Tool Model:	Probe275acc			
Calibration Casing Diameter:	4.500	in		
Calibration Depth:	7.692	ft		

Master Calibration, performed Tue Oct 11 06:33:54 2022:				
	Raw (v)	Calibrated (mv)	Results	



	Raw (v)		Calibrated (mV)		Results	
	Zero	Cal	Zero	Cal	Gain	Offset
3'	0.003	0.733	0.000	81.196	111.279	-0.375
CAL	0.004	0.752				
5'	0.007	0.704	0.000	81.196	116.549	-0.822
SUM						
S1	0.004	0.757	0.000	100.000	132.655	-0.471
S2	0.003	0.760	0.000	100.000	132.163	-0.455
S3	0.003	0.761	0.000	100.000	131.884	-0.396
S4	0.003	0.746	0.000	100.000	134.597	-0.437
S5	0.004	0.731	0.000	100.000	137.466	-0.488
S6	0.004	0.729	0.000	100.000	137.943	-0.519
S7	0.004	0.736	0.000	100.000	136.552	-0.510
S8	0.004	0.739	0.000	100.000	136.005	-0.515


Internal Reference Calibration, performed (Not Performed):						
	Raw (v)		Calibrated (v)		Results	
	Zero	Cal	Zero	Cal	Gain	Offset
CAL	0.000	0.000	0.004	0.752	1.000	0.000

Air Zero Calibration, performed Tue Oct 11 06:33:02 2022:						
	Raw (v)		Calibrated (v)		Results	
	Zero		Zero		Offset	
3'	0.000		0.000		0.000	
5'	0.000		0.000		0.000	
SUM						
S1	0.000		0.000		0.000	
S2	0.000		0.000		0.000	
S3	0.000		0.000		0.000	
S4	0.000		0.000		0.000	
S5	0.000		0.000		0.000	
S6	0.000		0.000		0.000	
S7	0.000		0.000		0.000	
S8	0.000		0.000		0.000	

Inclinometer Calibration Report						
Performed:	Thu Jul 28 15:55:38 2022					
	Low Read.	High Read.	Low Ref.	High Ref.		
X Accelerometer	-914.00	901.00	-1.00	1.00	gee	
Y Accelerometer	-903.00	898.00	-1.00	1.00	gee	
Z Accelerometer	3.47	893.02	0.00	1.00	gee	

Sensor	Offset (ft)	Schematic	Description	Length (ft)	O.D. (in)	Weight (lb)
						

Company	Caerus Piceance LLC.
Well	B III B26 Fed 11C 26 496

Well	BSU B20 Fed TIC-20-490		
Field	Grand Valley		
County	Garfield	State	Colorado
		Compensated Neutron Gamma Ray Casing Collar Log	