



Compensated Neutron
Gamma Ray
Casing Collar Log

Company	Caerus Piceance LLC.	Country	USA
Well	BJU B26 Fed 21B-27-496		
Field	Grand Valley		
County	Garfield		
State	Colorado		
Company	Caerus Piceance LLC.	Country	USA
Well	BJU B26 Fed 21B-27-496		
Field	Grand Valley		
County	Garfield		
State	Colorado		
Location:	API # : 05-045-24447	Other Services	RCBL
SEC 26	TWP 4S	RGE 96W	
Permanent Datum	Ground Level	Elevation	8211'
Log Measured From	Kelly Bushing		
Drilling Measured From	Kelly Bushing		
		Elevation	K.B. 8241' D.F. 8240' G.L. 8211'

Date 11-OCT-2022

Run Number	One		
Depth Driller	12624 FT		
Depth Logger	12474 FT		
Bottom Logged Interval	12472FT		
Top Log Interval	8000 FT		
Open Hole Size	8.750"		
Type Fluid	Fresh Water		
Density / Viscosity	8.34 lb/gal		
Max. Recorded Temp.	---		
Estimated Cement Top	---		
Time Well Ready	ROA		
Time Logger on Bottom	12:30		
Equipment Number	8053		
Location	Grand Junction Colo		
Recorded By	A. Ellsworth		
Witnessed By	Z. Fisher		

Borehole Record				Tubing Record			
Run Number	Bit	From	To	Size	Weight	From	To
	8.75"	Surface	12624 FT				

Casing Record	Size	Wgt/Ft	Top	Bottom
Surface String	9.625"	36	Surface	3029.2 FT
Prot. String	4.5"	11.6	Surface	12593.3 FT
Production String				
Liner				

<<<< Fold Here >>>>

All interpretations are opinions based on inferences from electrical or other measurements and we cannot and do not guarantee the accuracy or correctness of any interpretation, and we shall not, except in the case of gross or willful negligence on our part, be liable or responsible for any loss, costs, damages, or expenses incurred or sustained by anyone resulting from any interpretation made by any of our officers, agents or employees. These interpretations are also subject to our general terms and conditions set out in our current Price Schedule.

Comments

Log ran as per customer request.
Depth referenced to Kelly Bushing @ 30FT
Marker Joint from 8015 FT - 8025 FT
Log ran from 12474 FT to 8000 FT
Log ran with 0 PSI surface induced pressure.

Thank you for choosing The Wireline Group!!!



Main Pass 5" = 100'

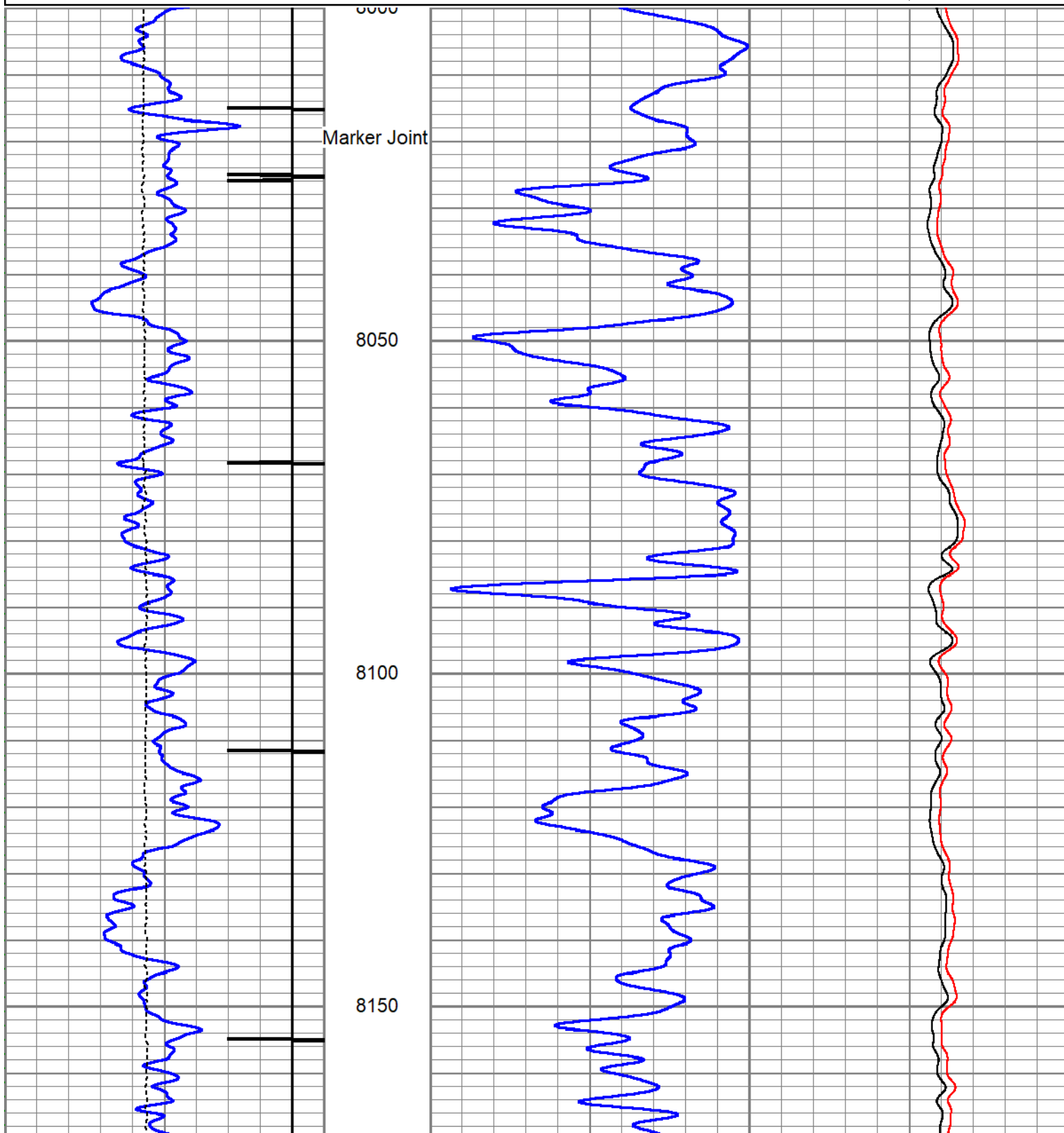
Database File caerus_bju b26 fed 21b-27-496_rcbl_cnl_10-10-2022.db
Dataset Pathname main
Presentation Format cnl
Dataset Creation Tue Oct 11 15:12:24 2022
Charted by Depth in Feet scaled 1:240

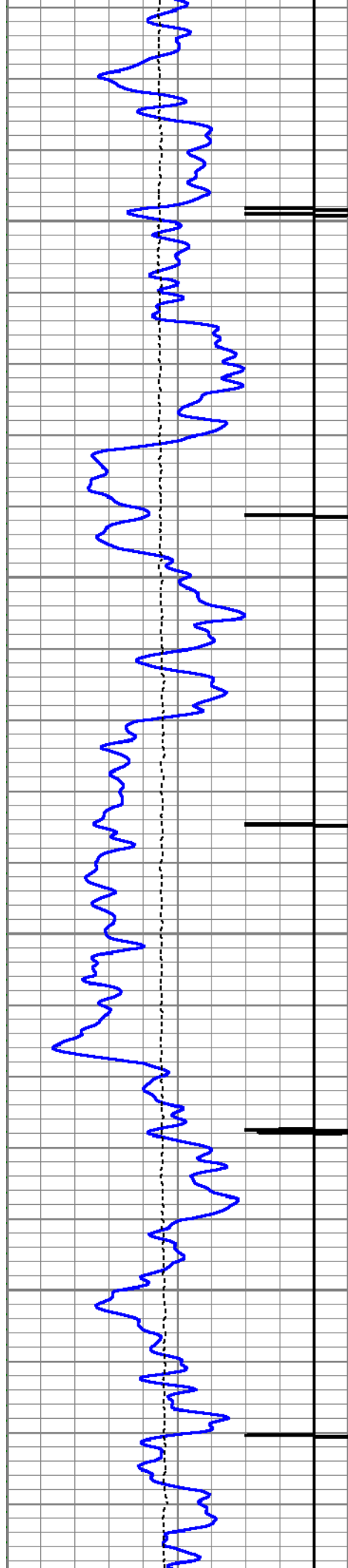
0	GR (GAPI)	200
-9	CCL	1
0	Line Tension (lb)	4000

0.3 CNPOR (pu) -0.1

CNLSC
0 (cps) 1500

CNSSC
0 (cps) 7000



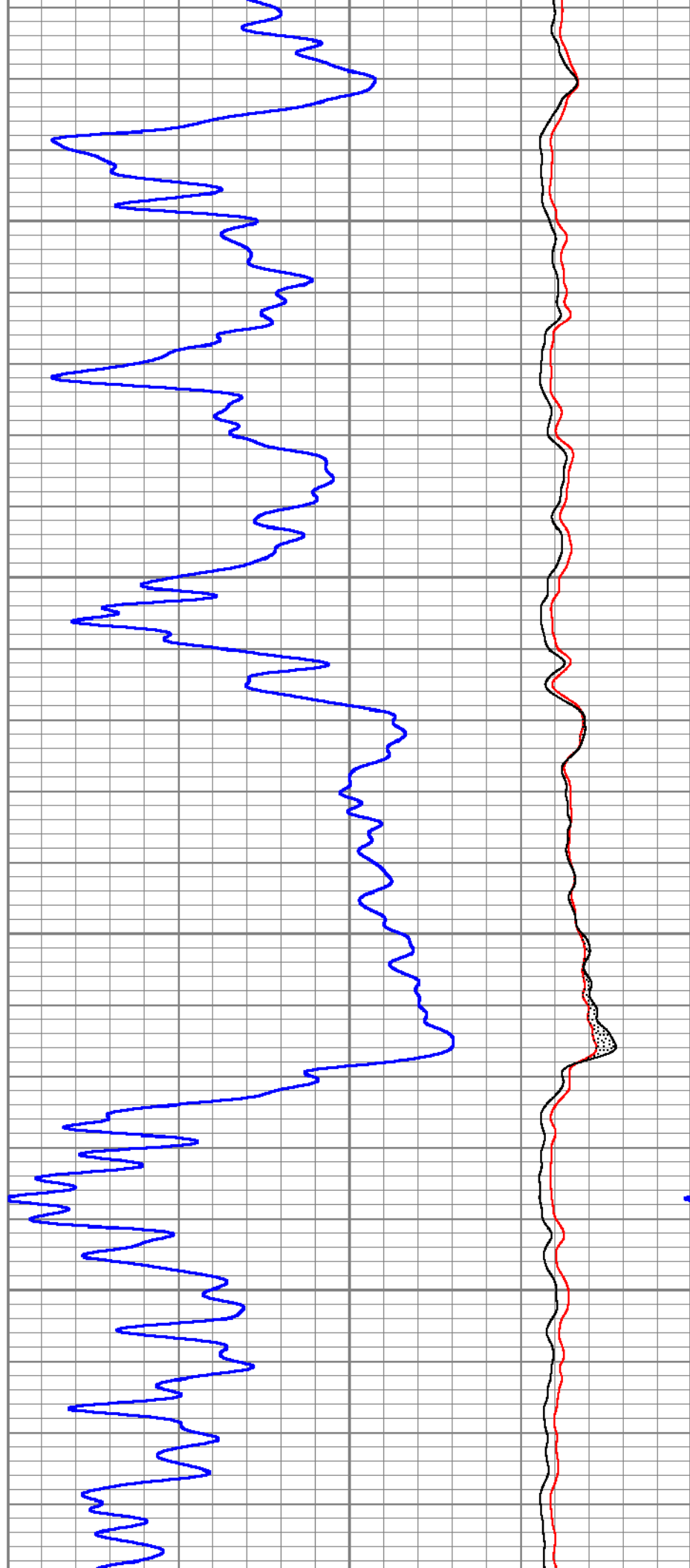


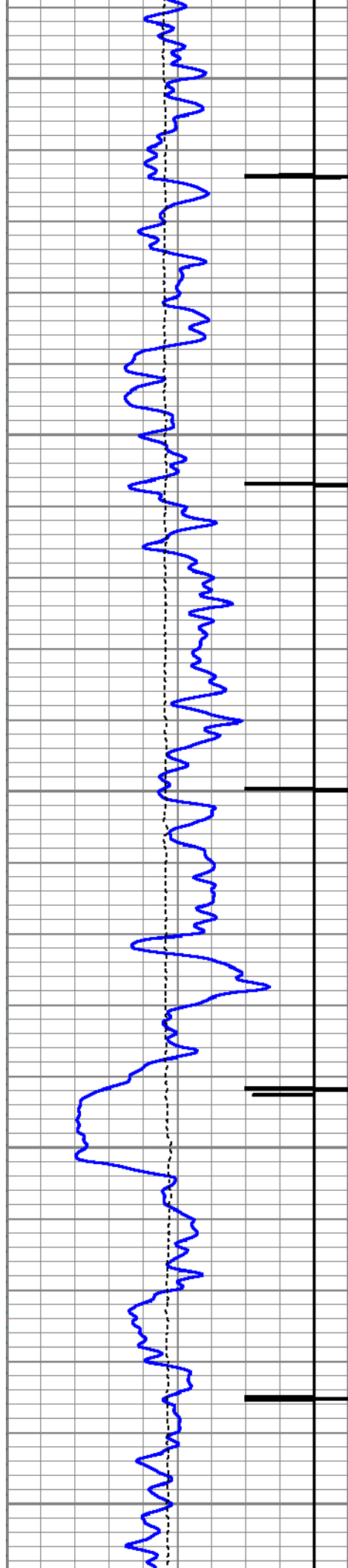
8200

8250

8300

8350





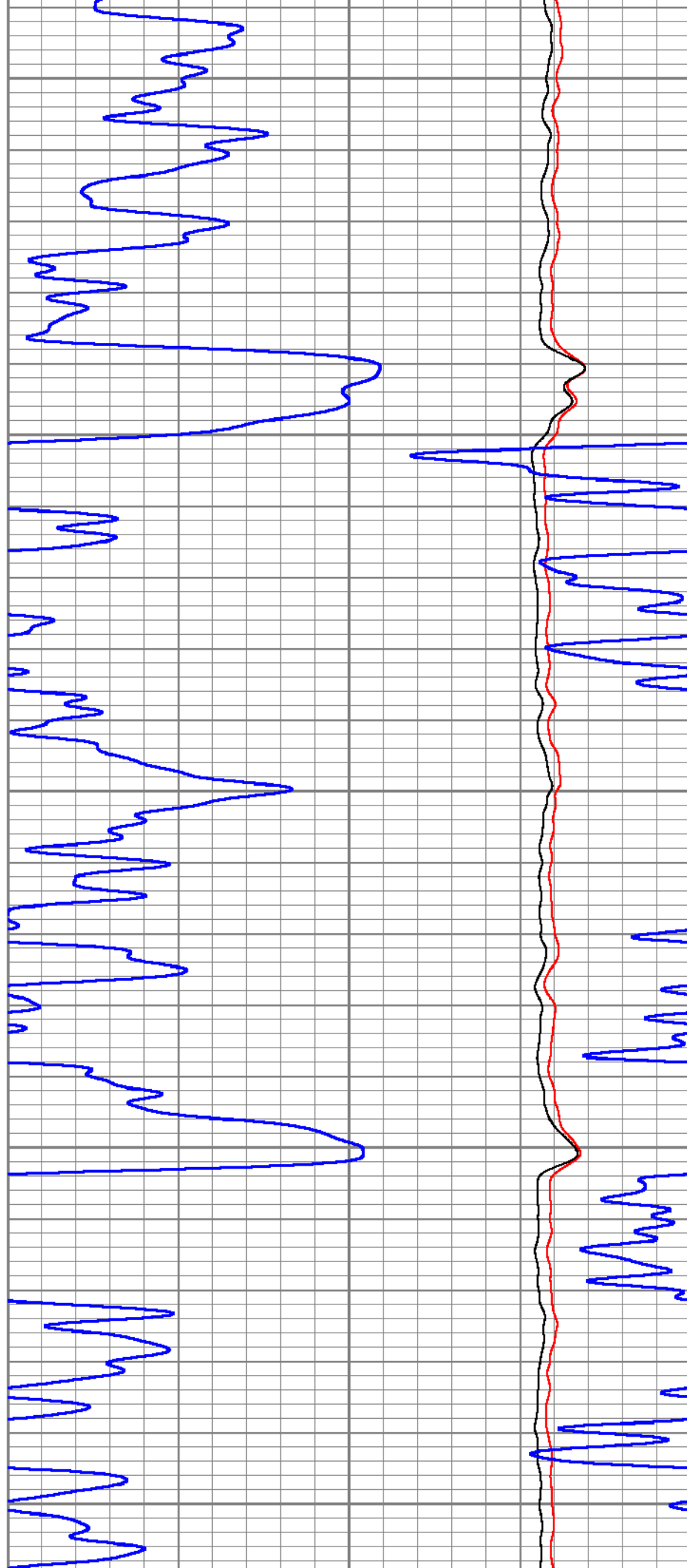
8400

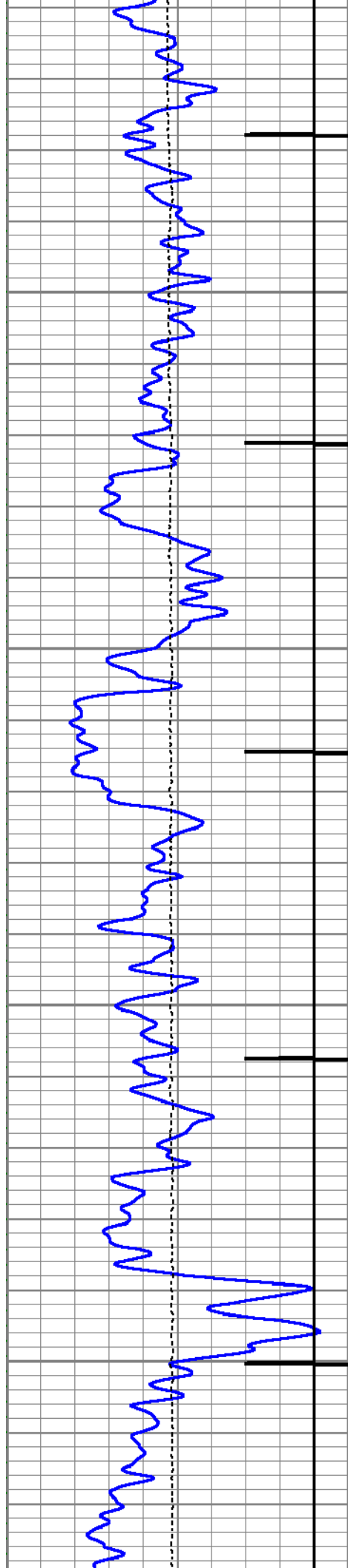
8450

8500

8550

8600



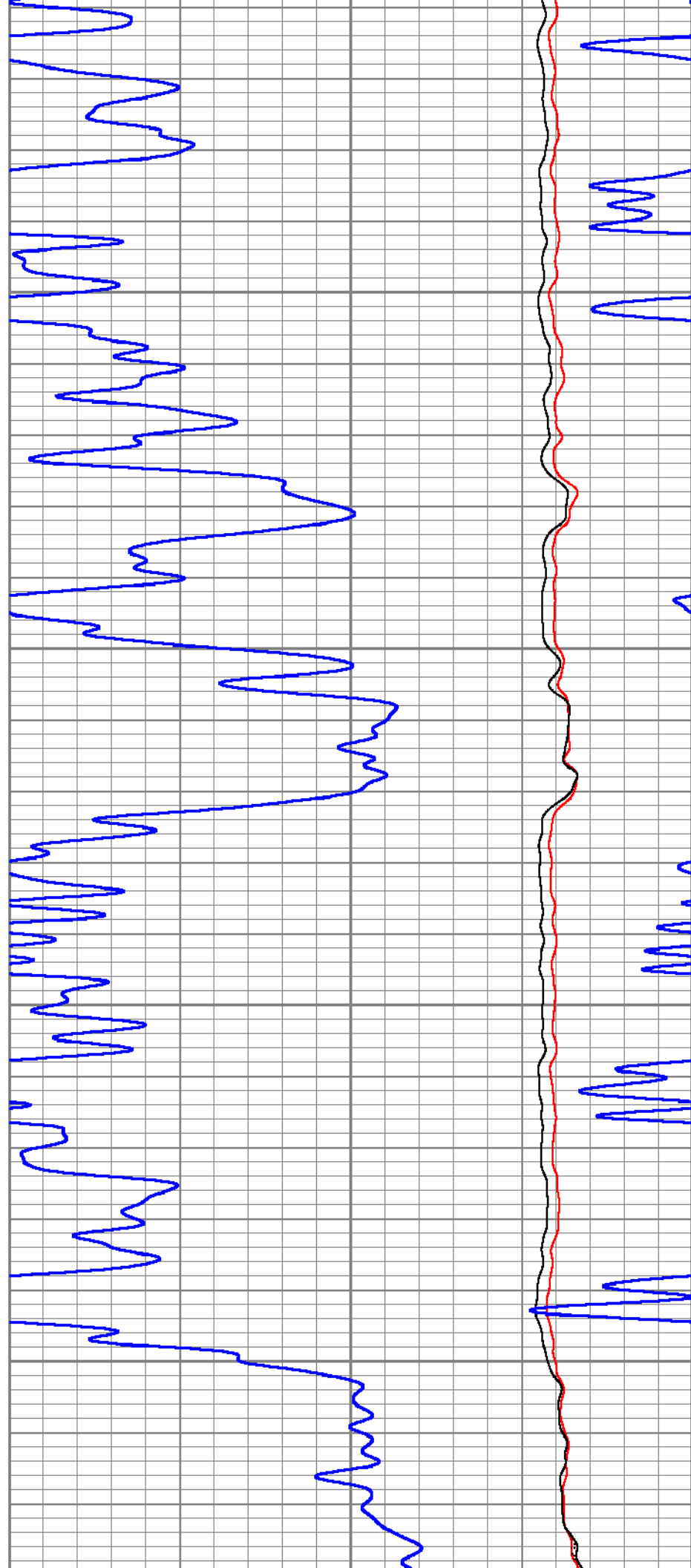


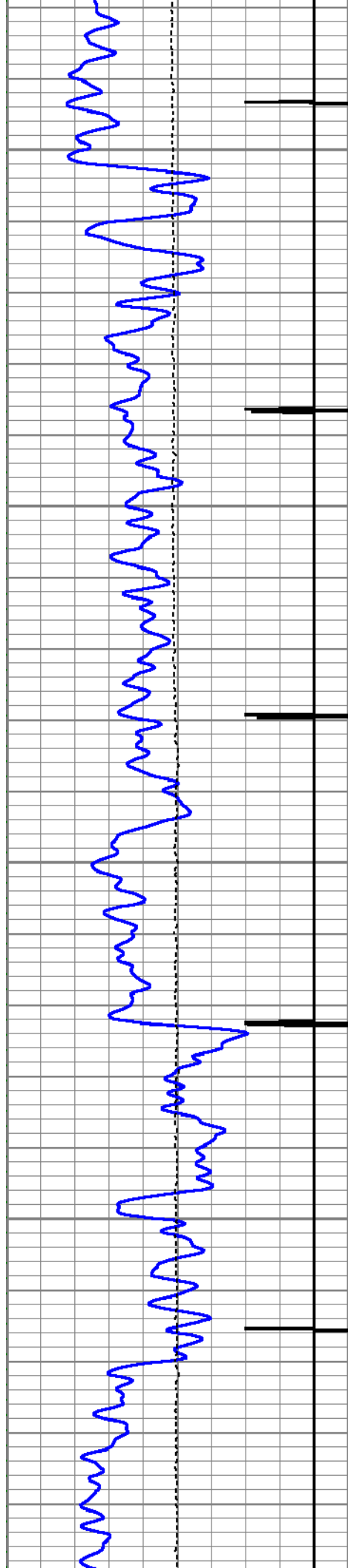
8650

8700

8750

8800





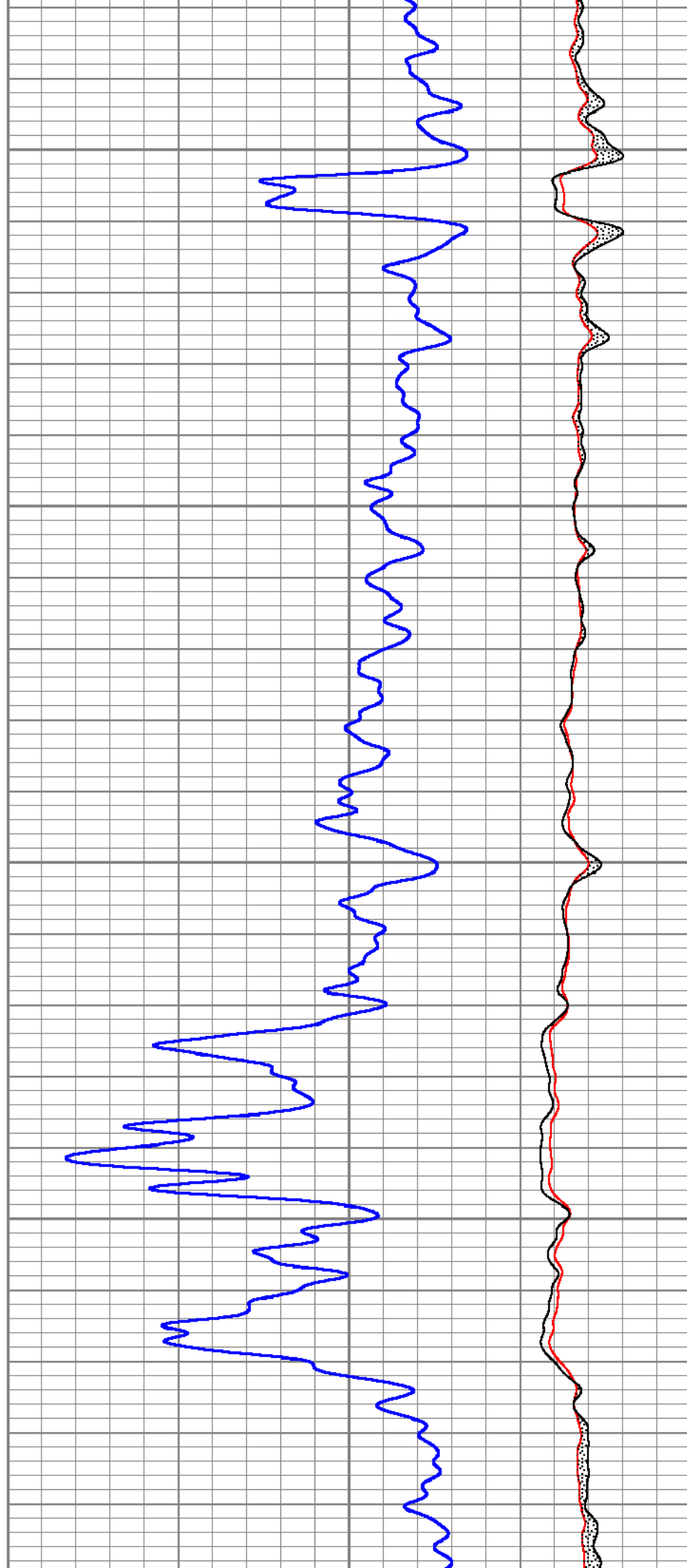
8850

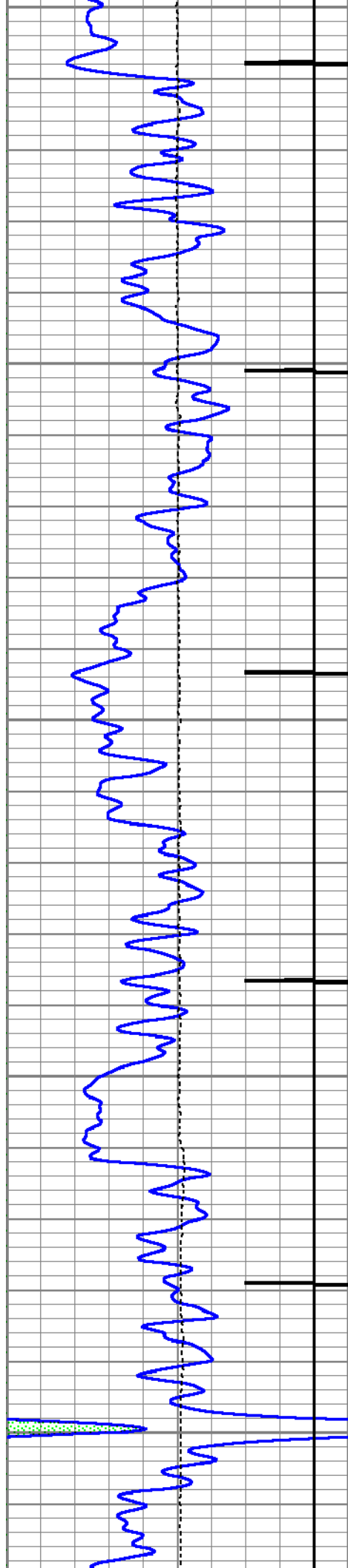
8900

8950

9000

9050





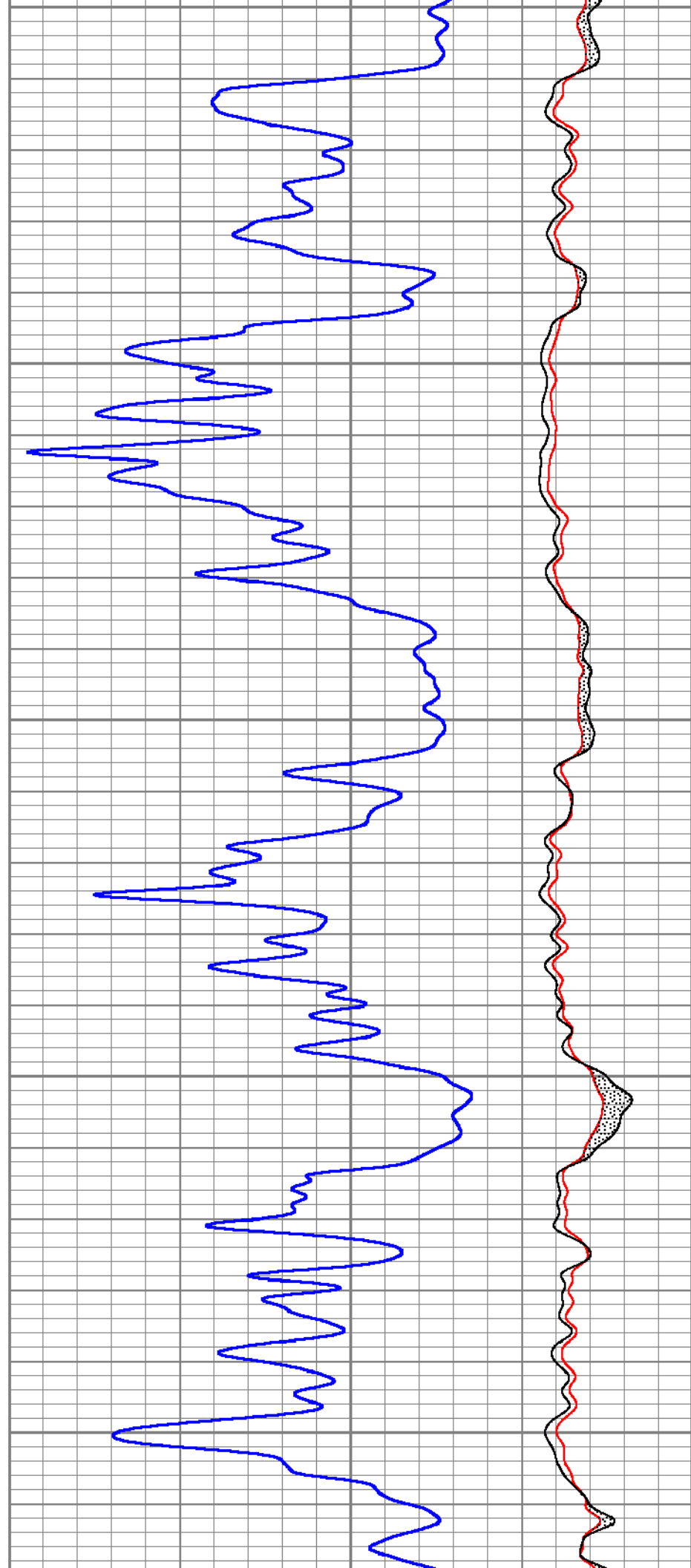
9050

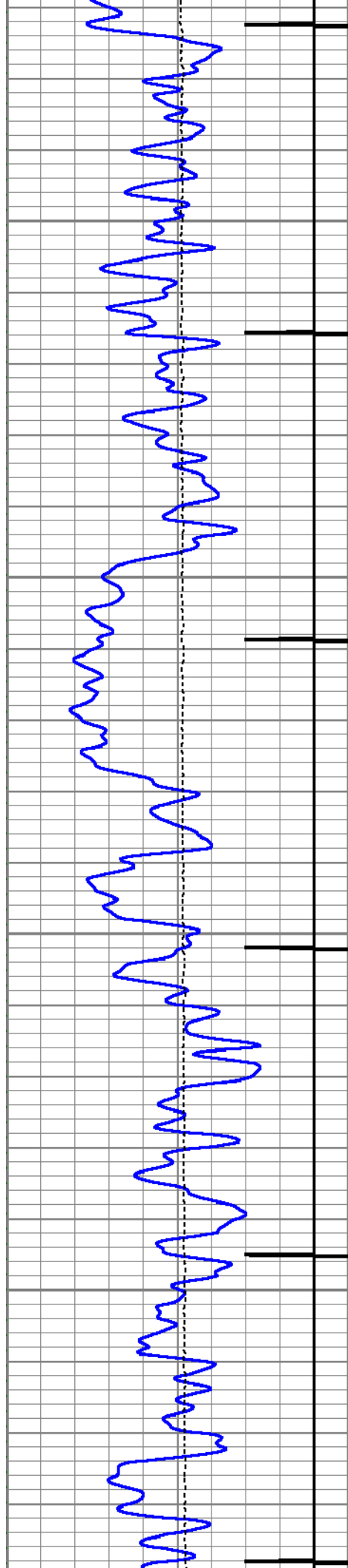
9100

9150

9200

9250



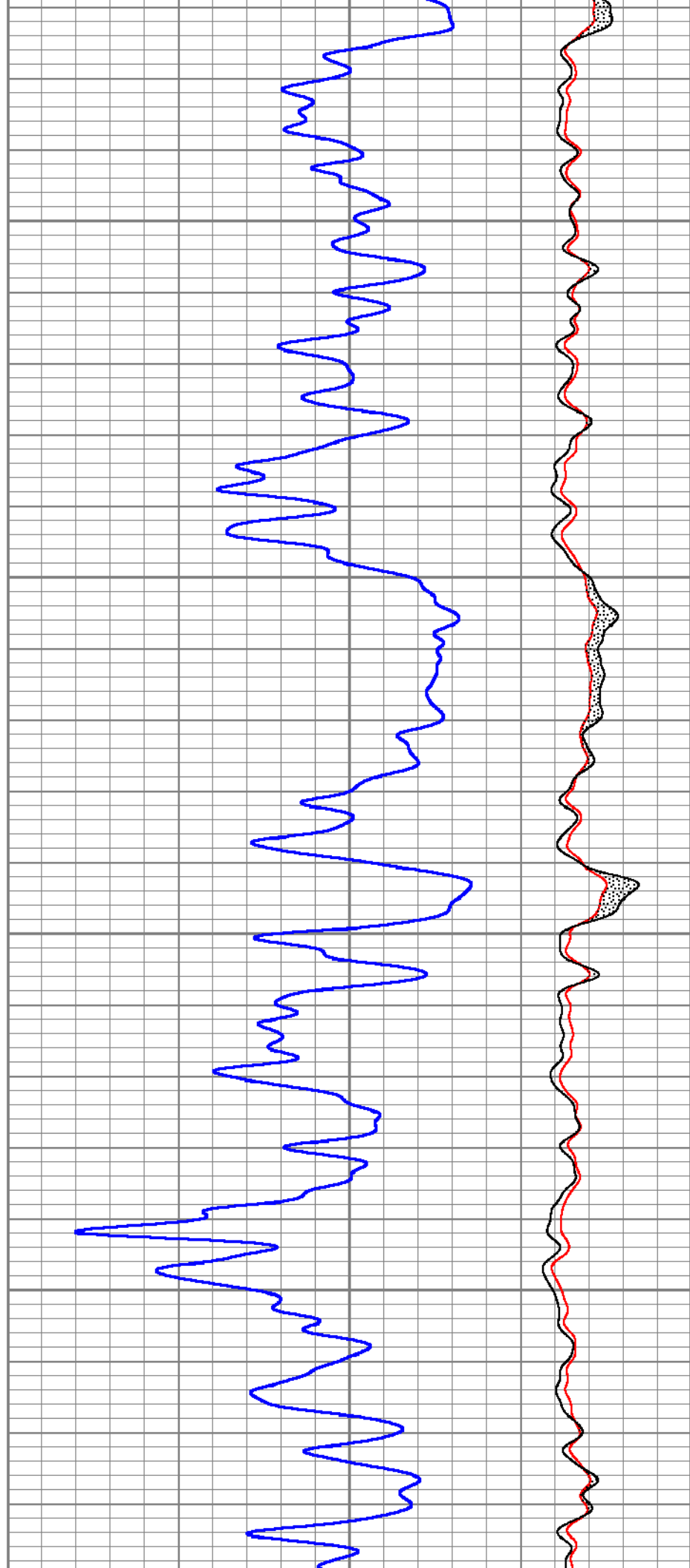


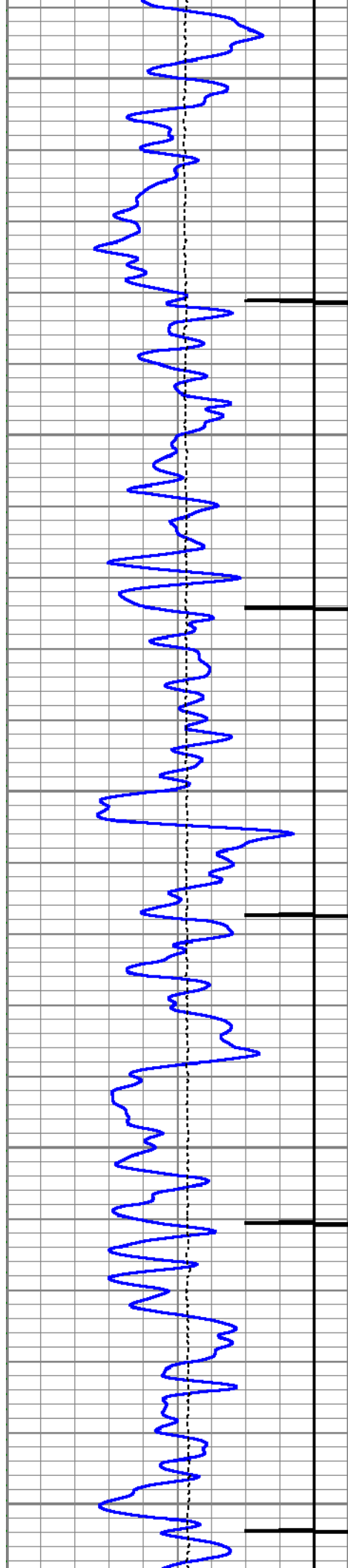
9300

9350

9400

9450





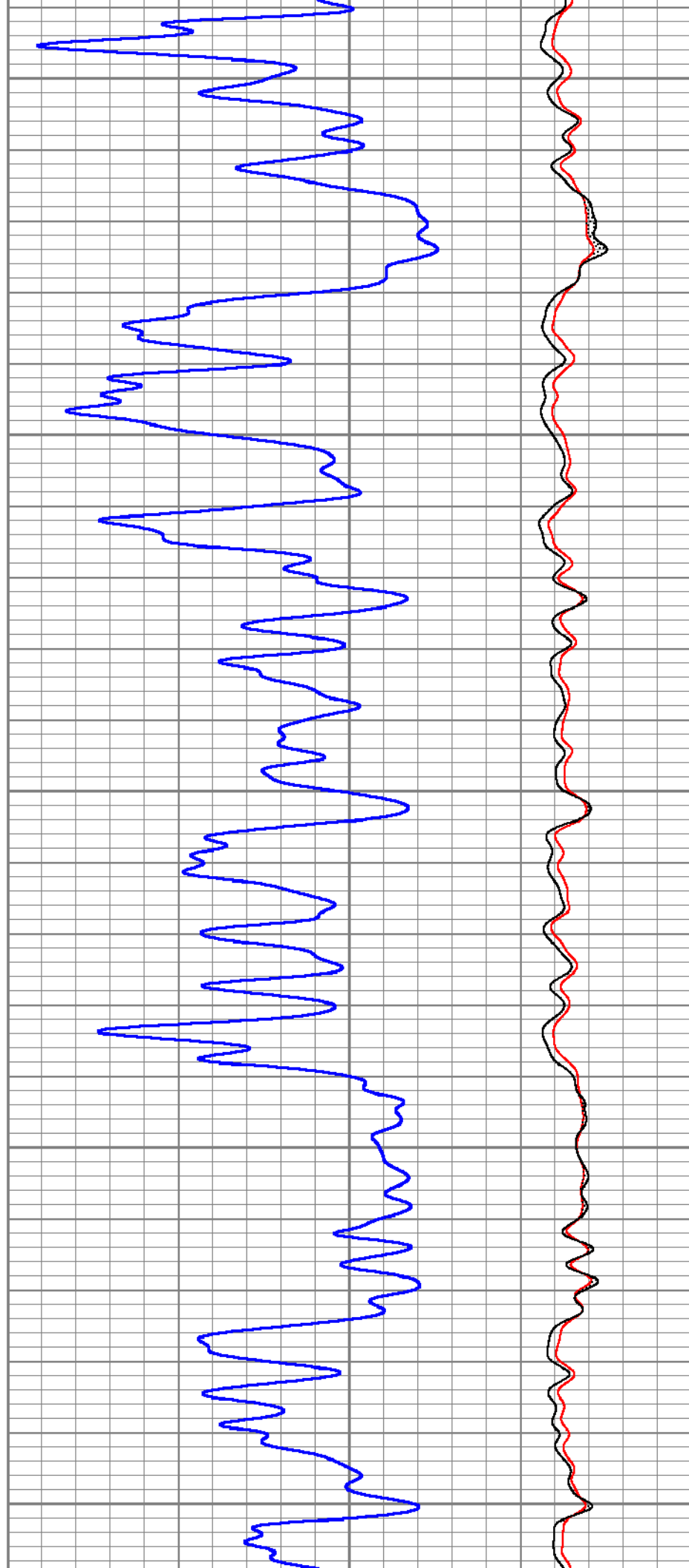
9500

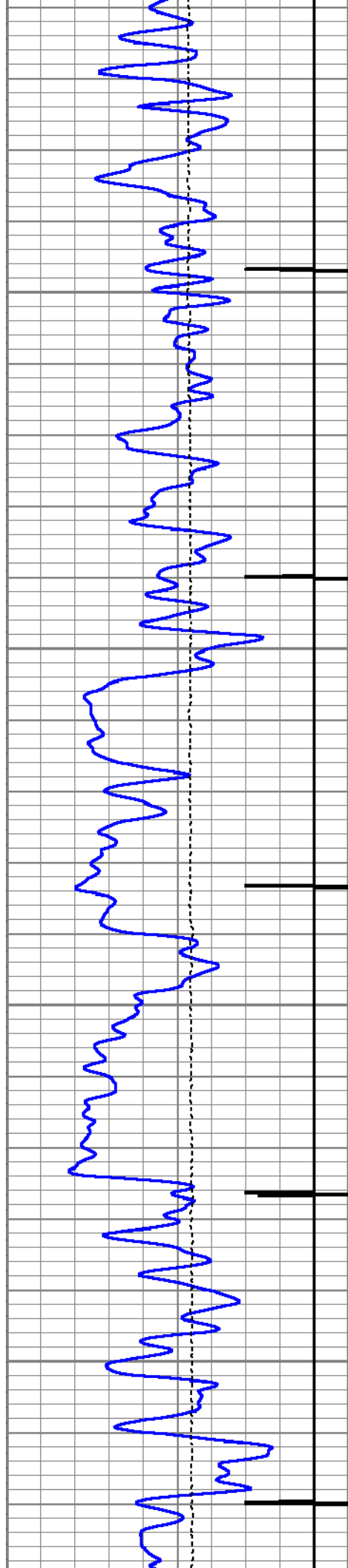
9550

9600

9650

9700



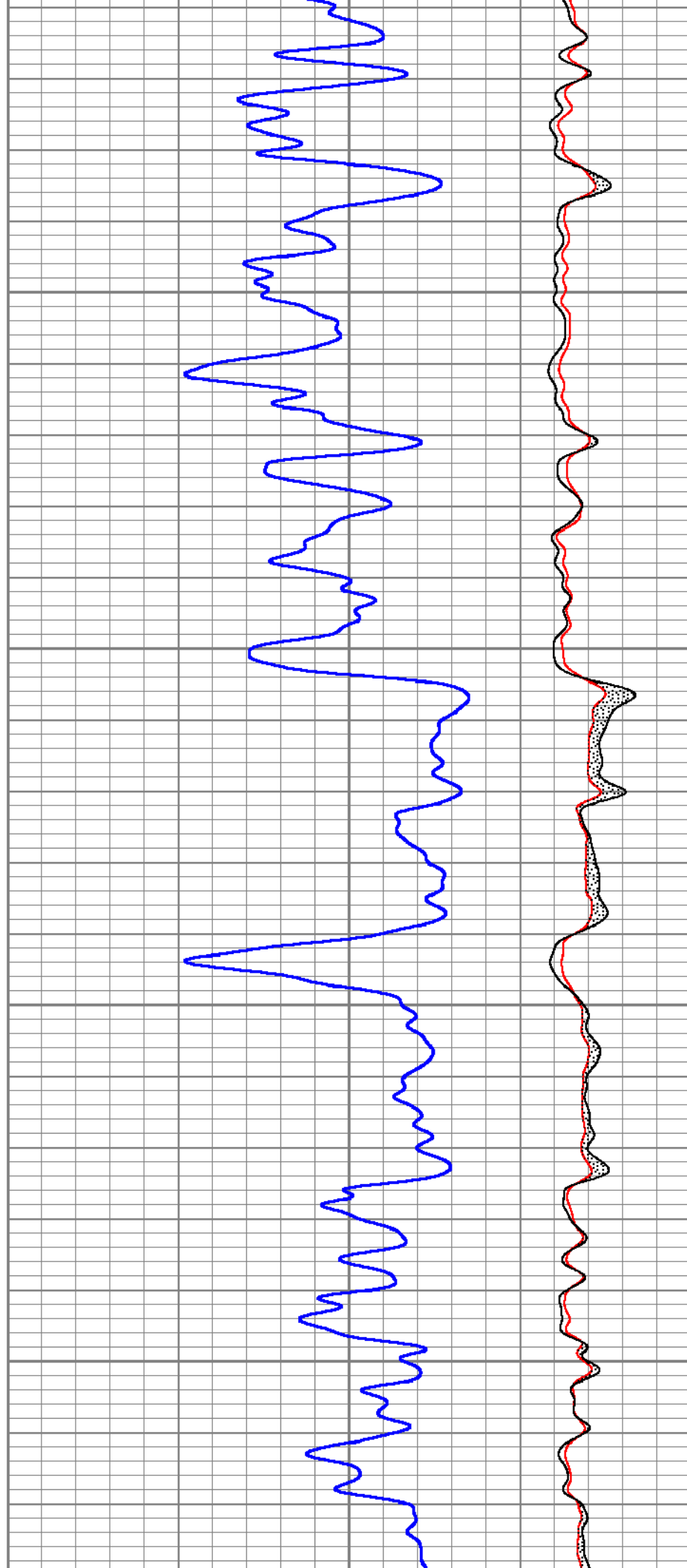


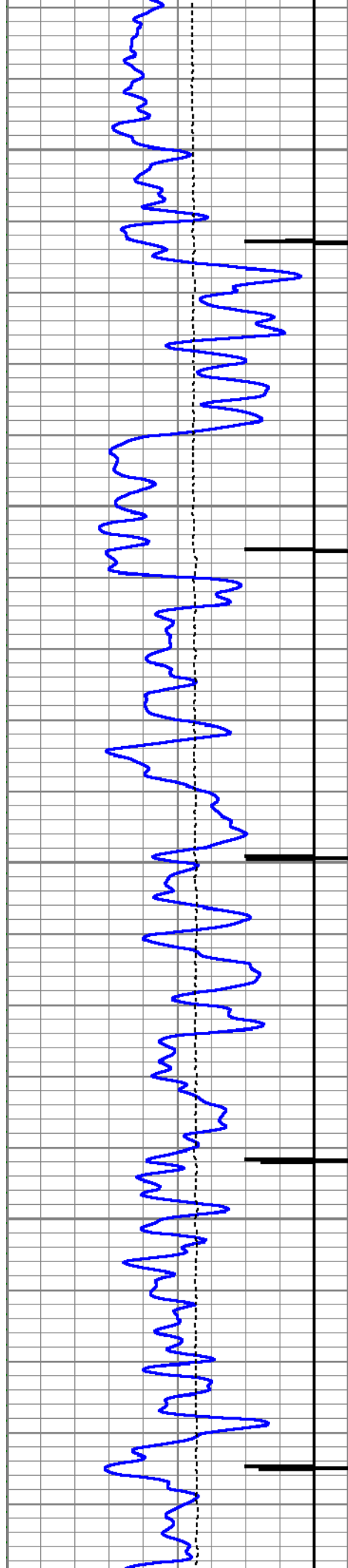
9750

9800

9850

9900





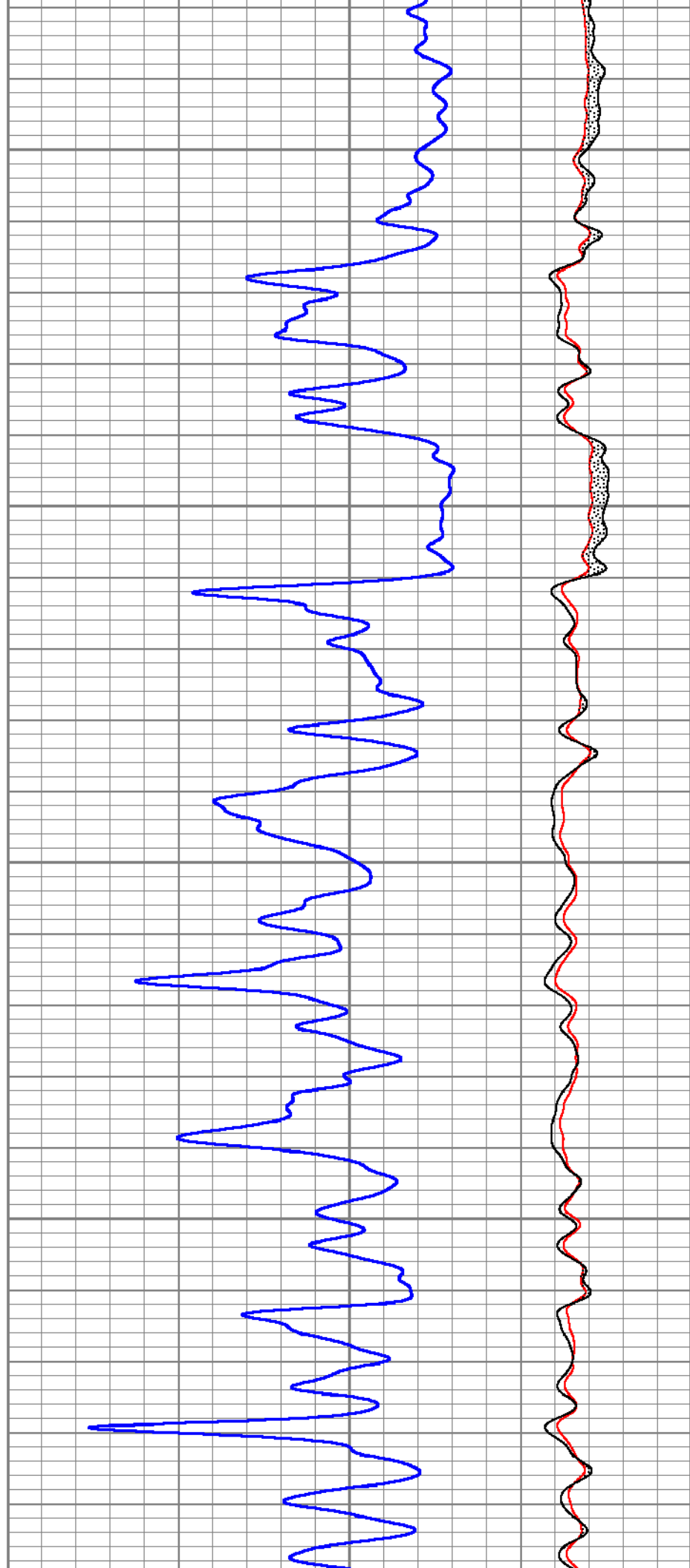
9950

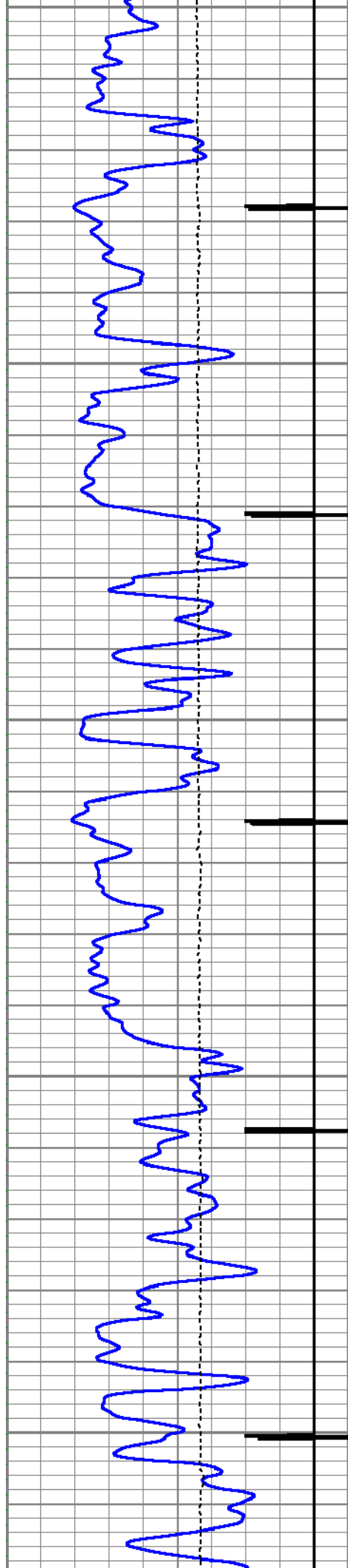
10000

10050

10100

10150





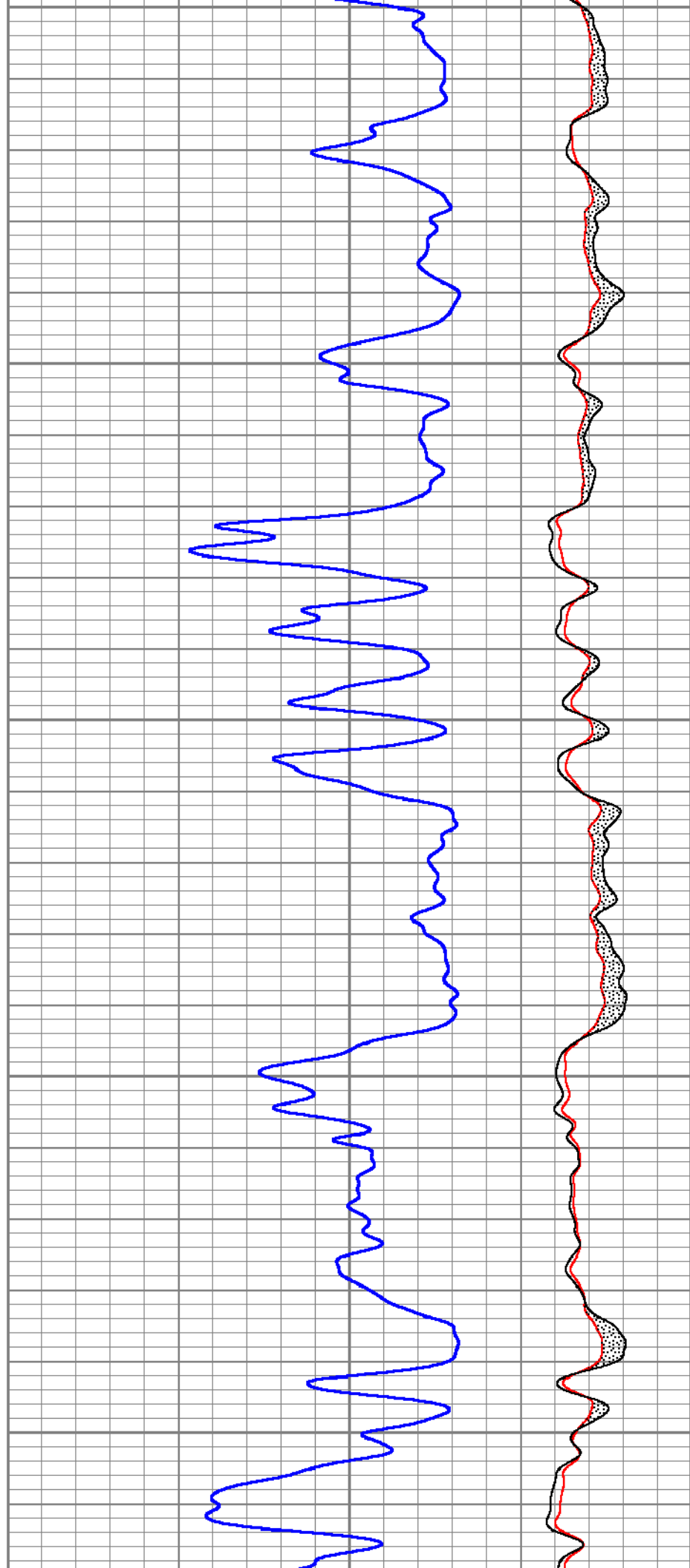
10150

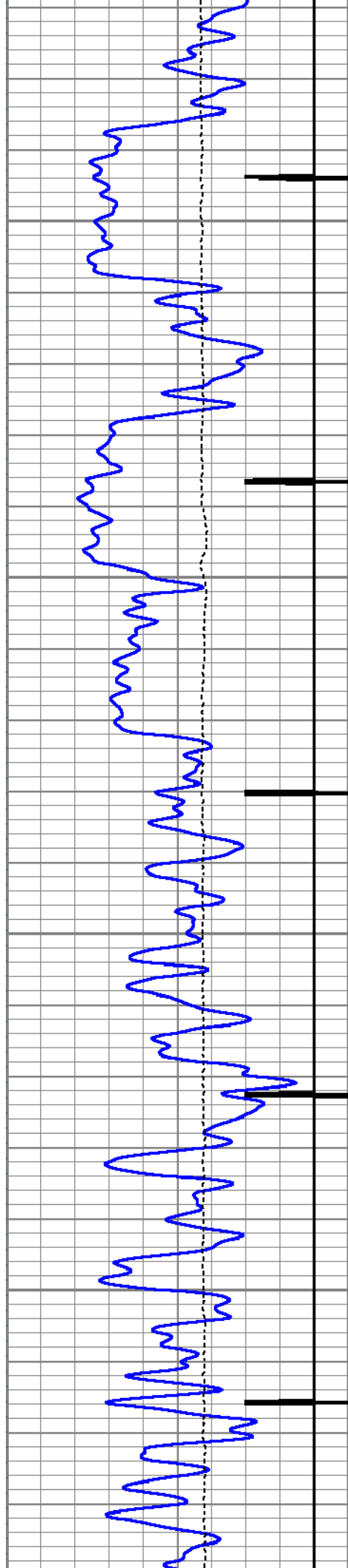
10200

10250

10300

10350



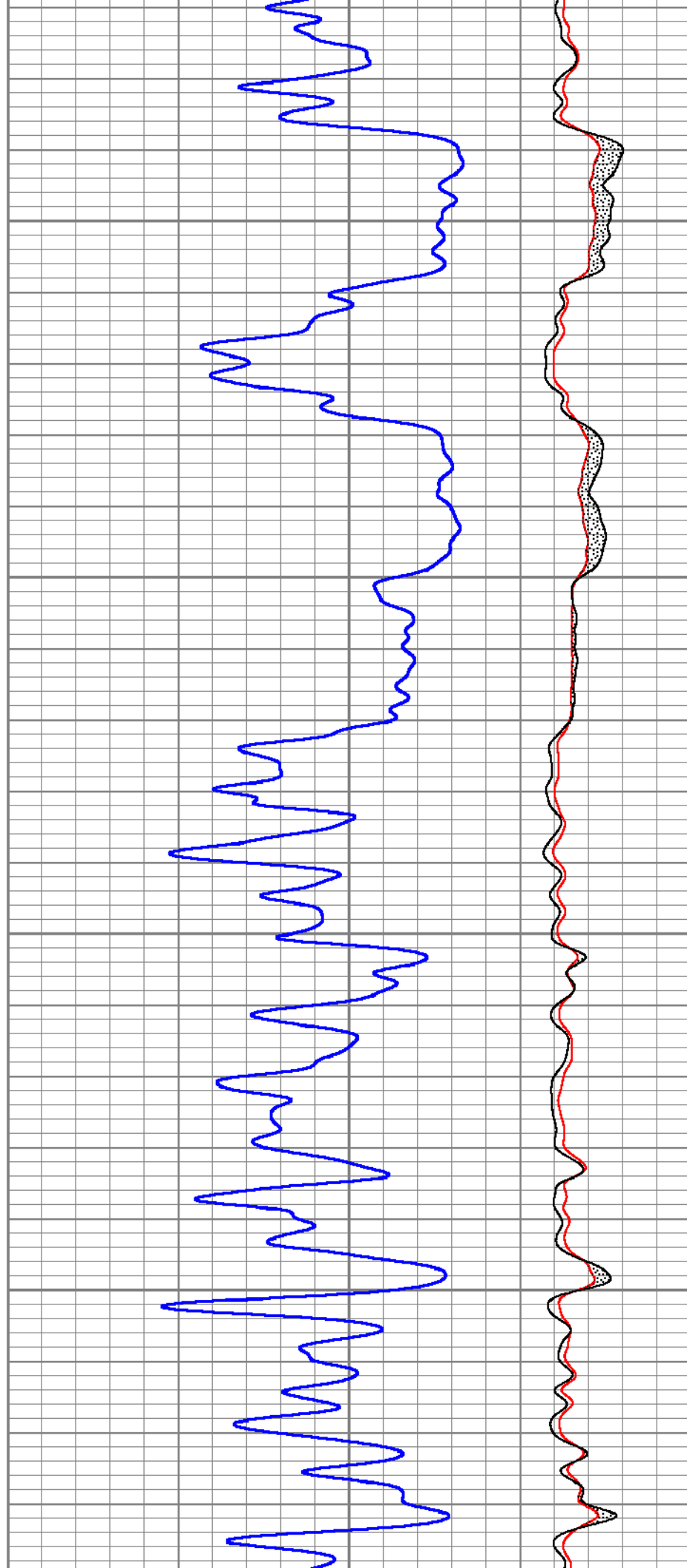


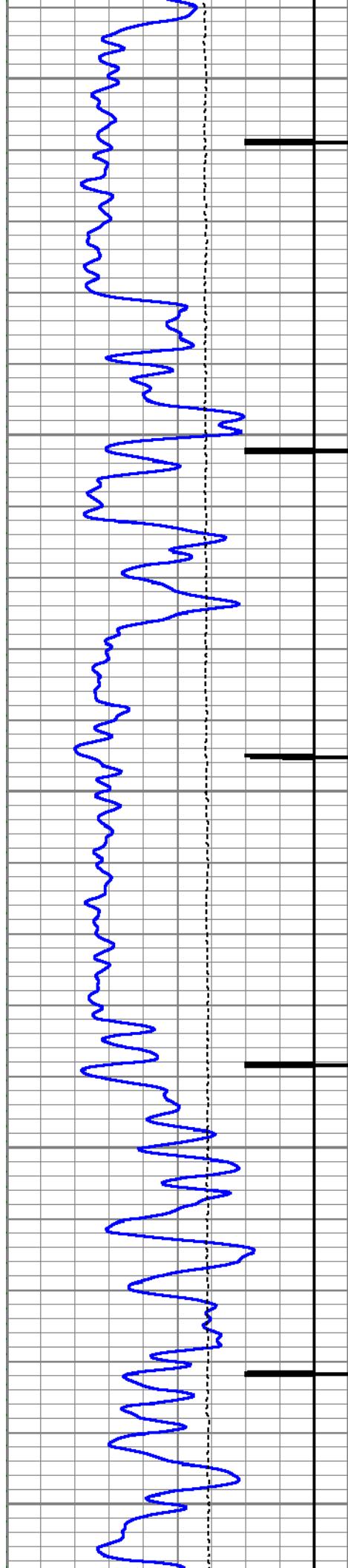
10400

10450

10500

10550





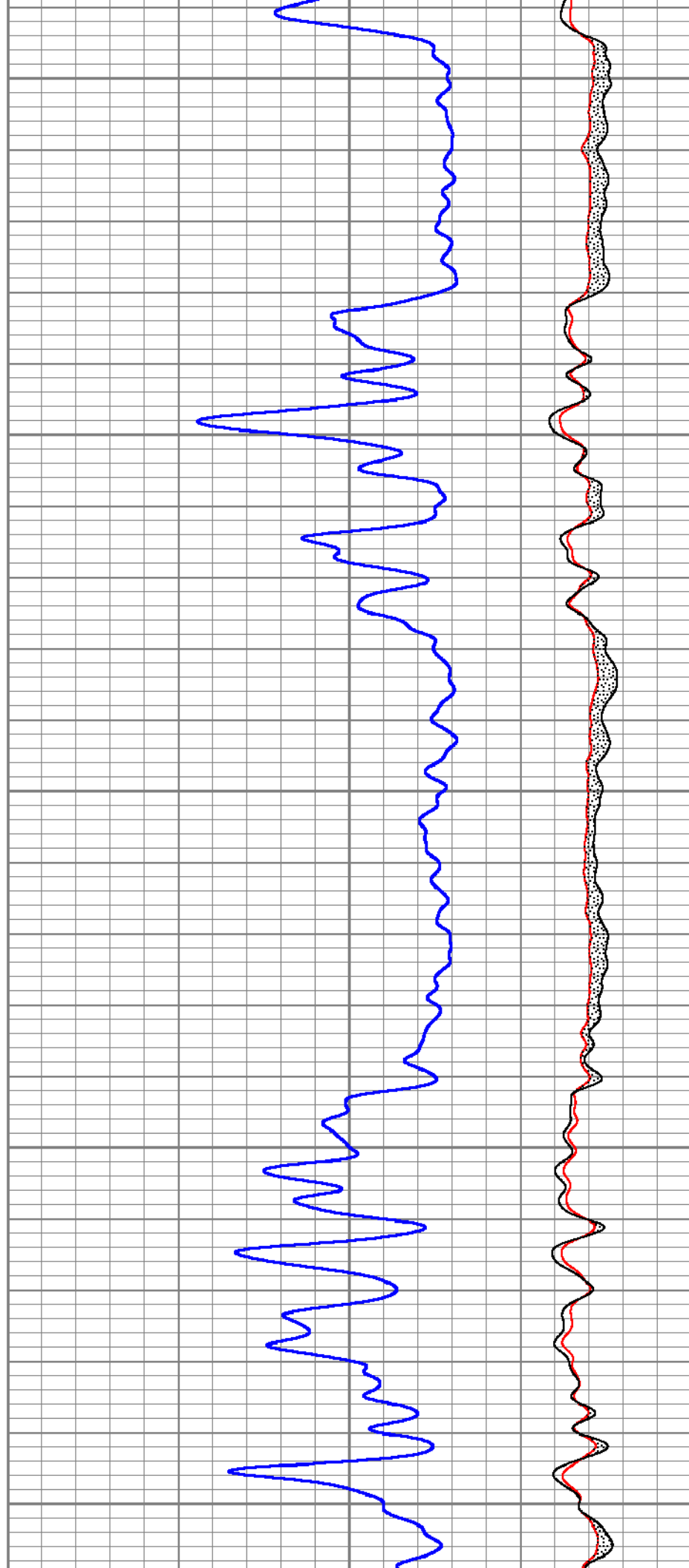
10600

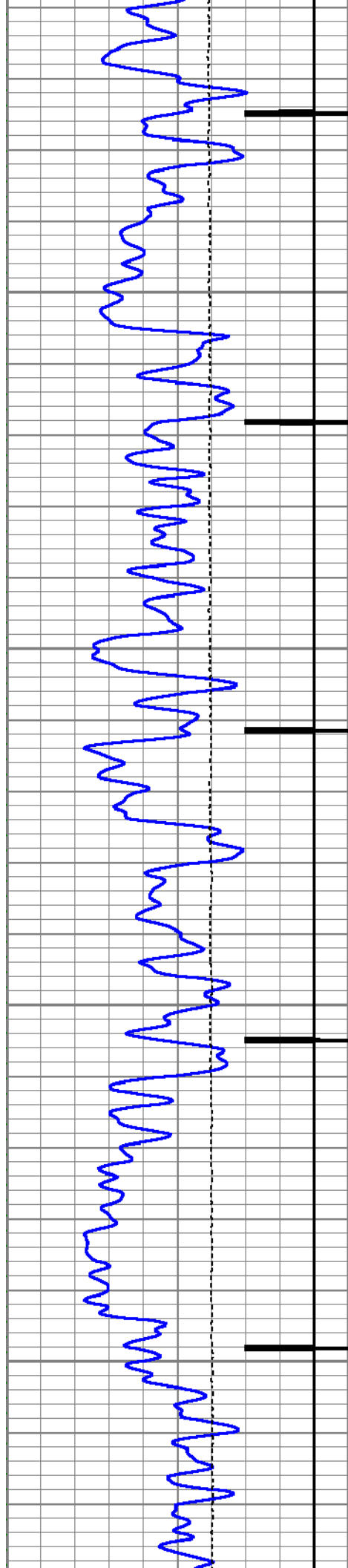
10650

10700

10750

10800



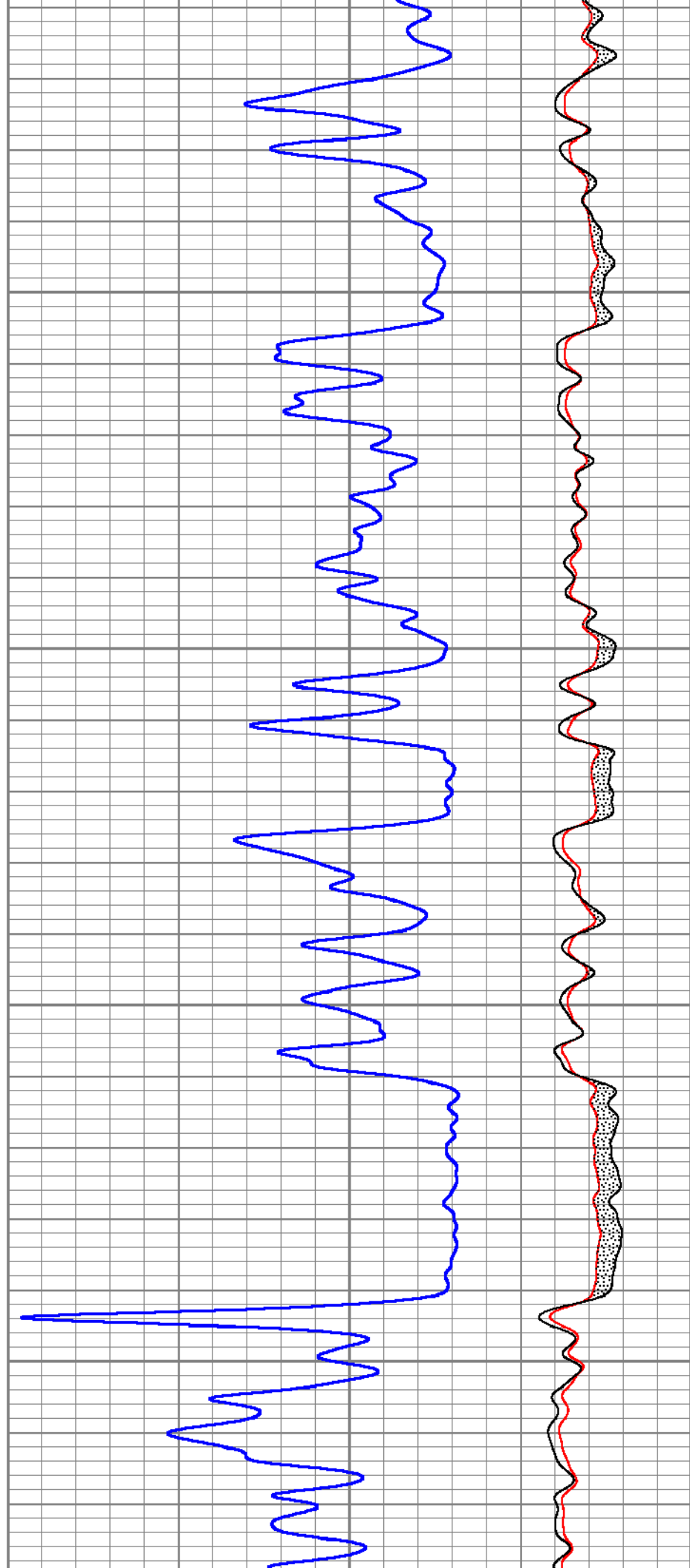


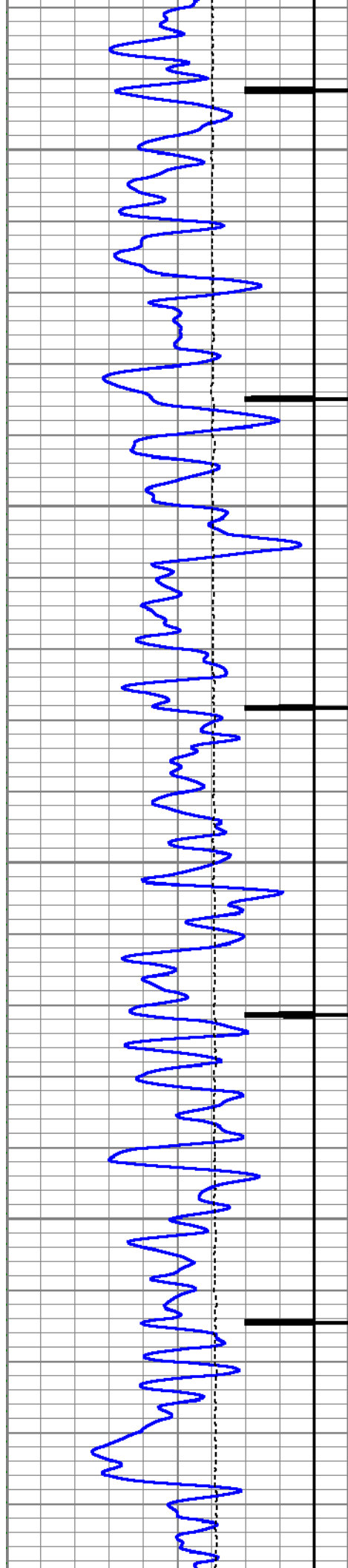
10850

10900

10950

11000





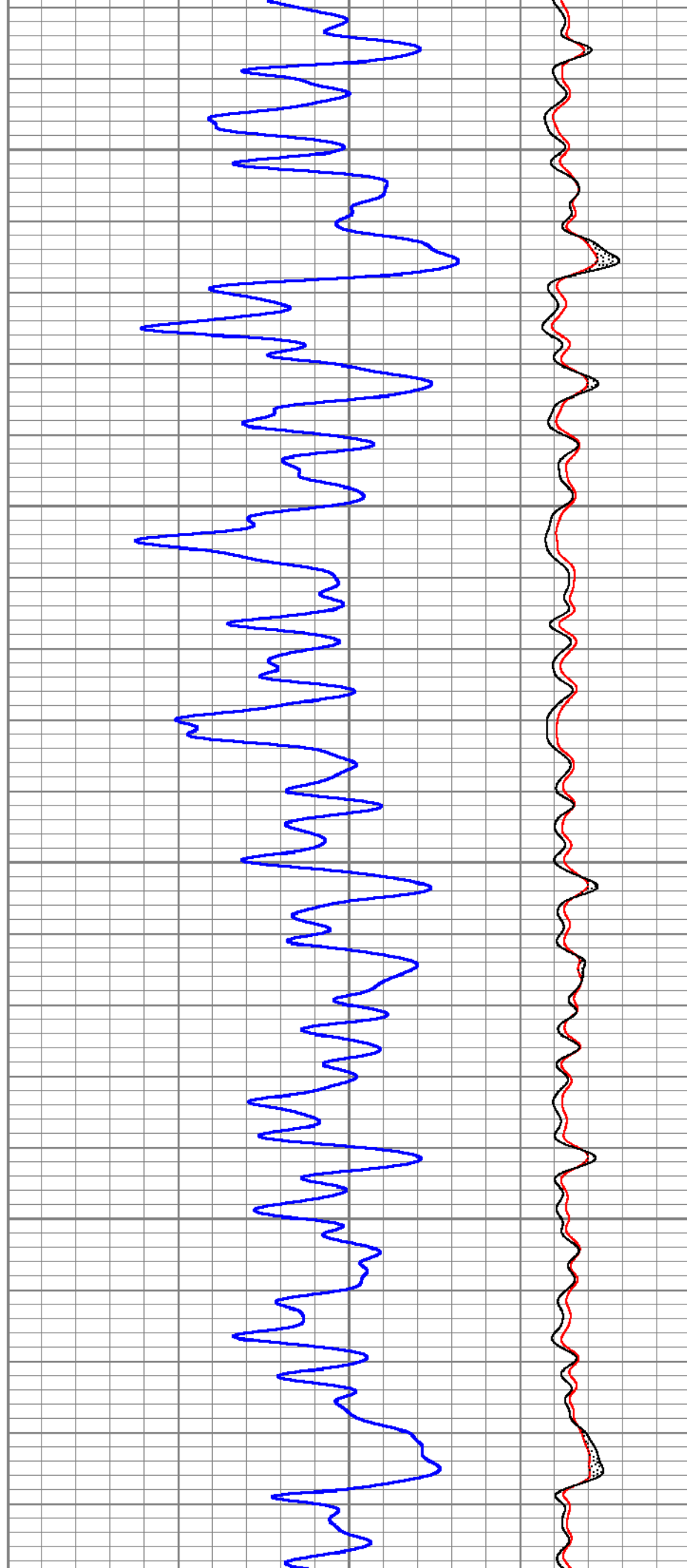
11050

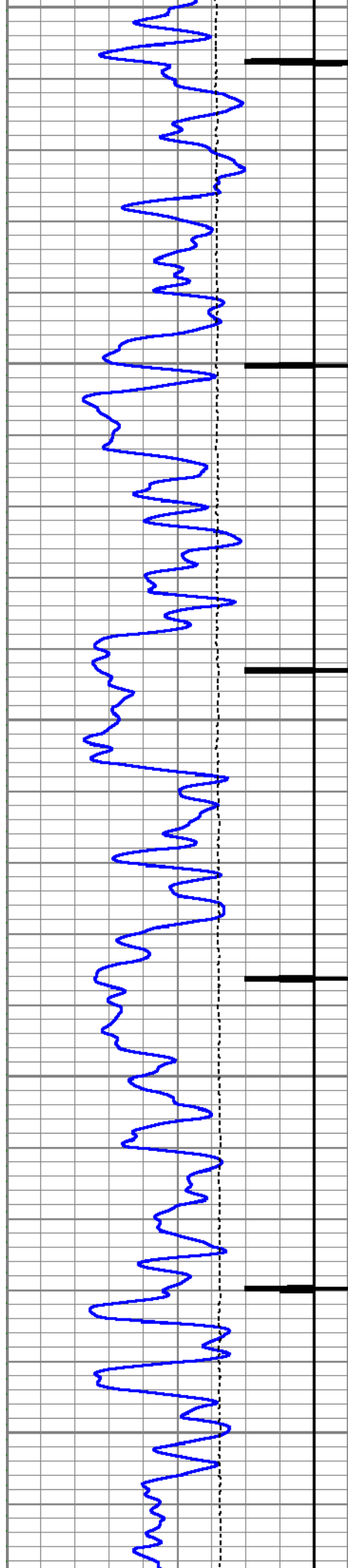
11100

11150

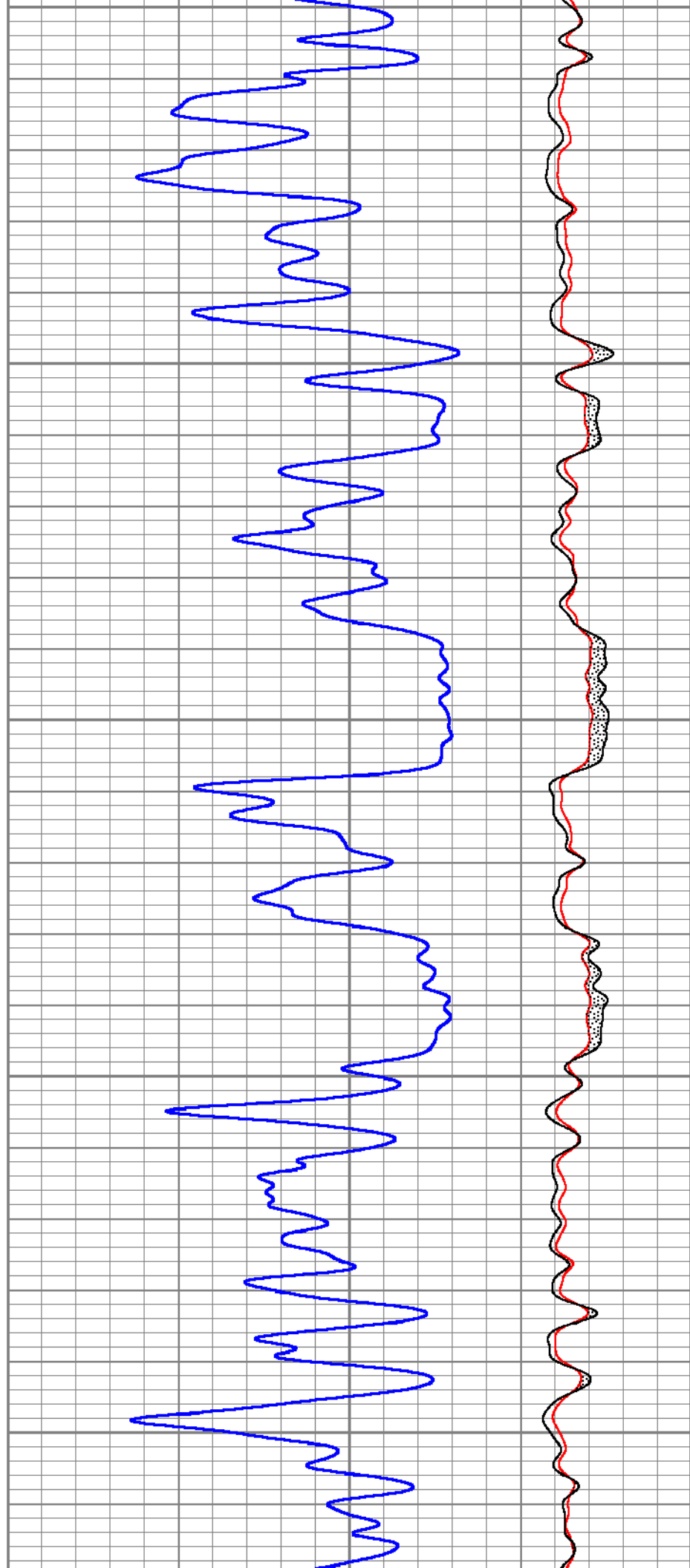
11200

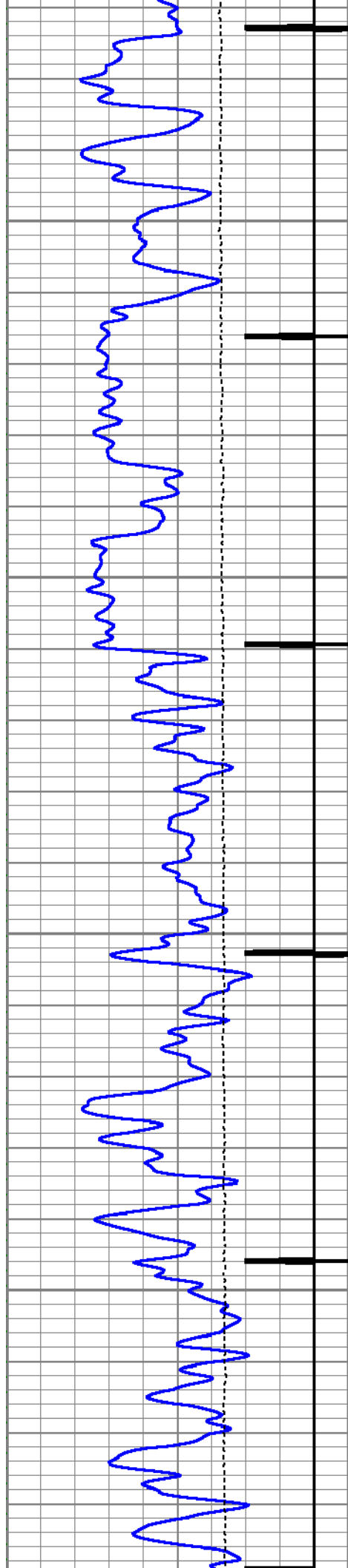
11250





11250
11300
11350
11400
11450



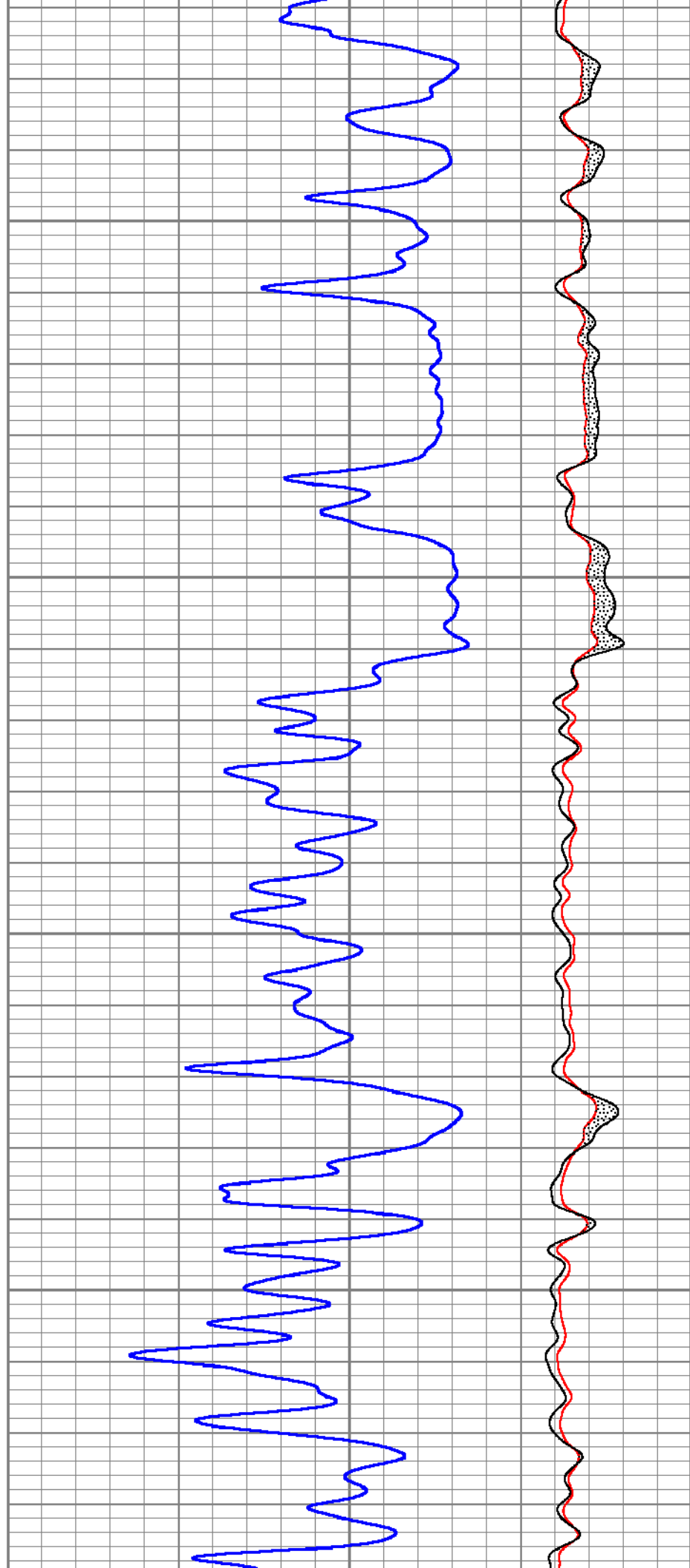


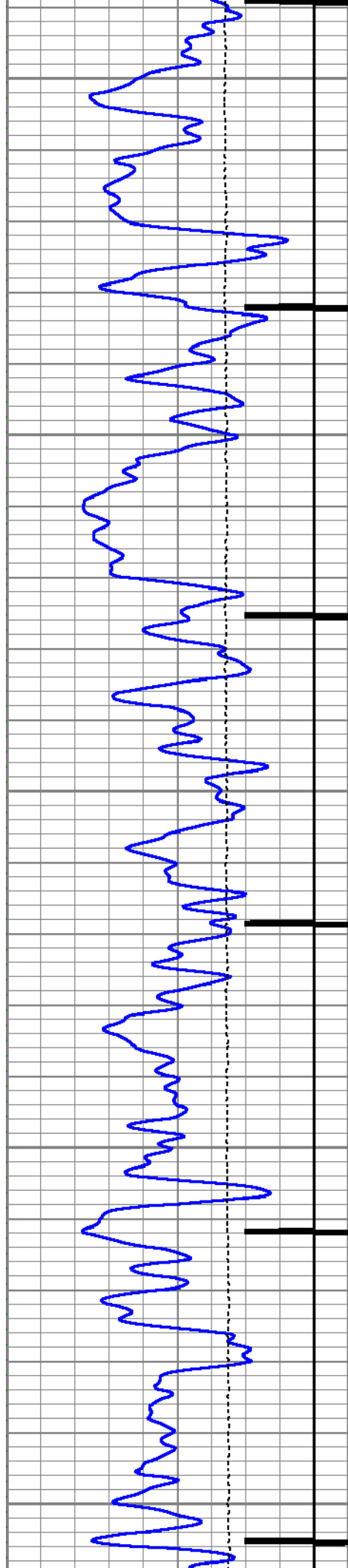
11500

11550

11600

11650





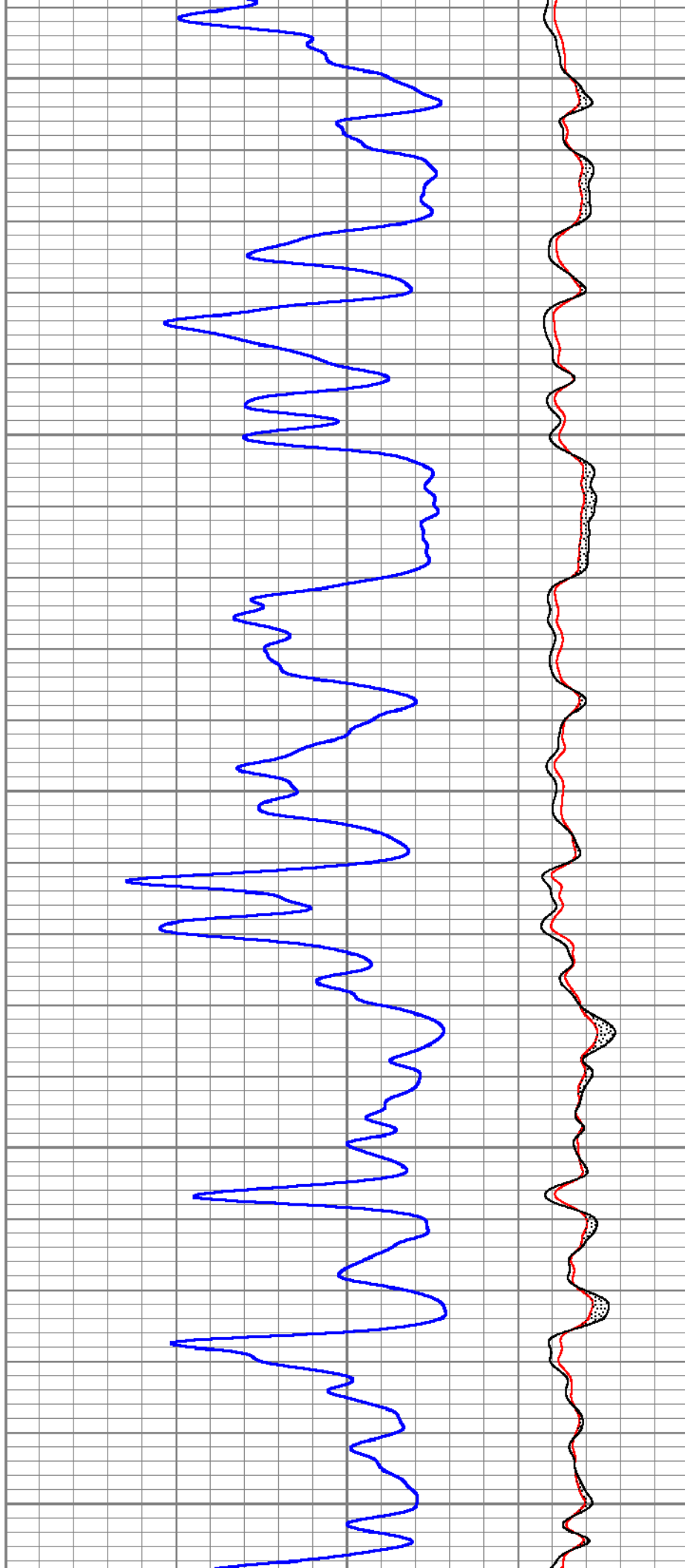
11700

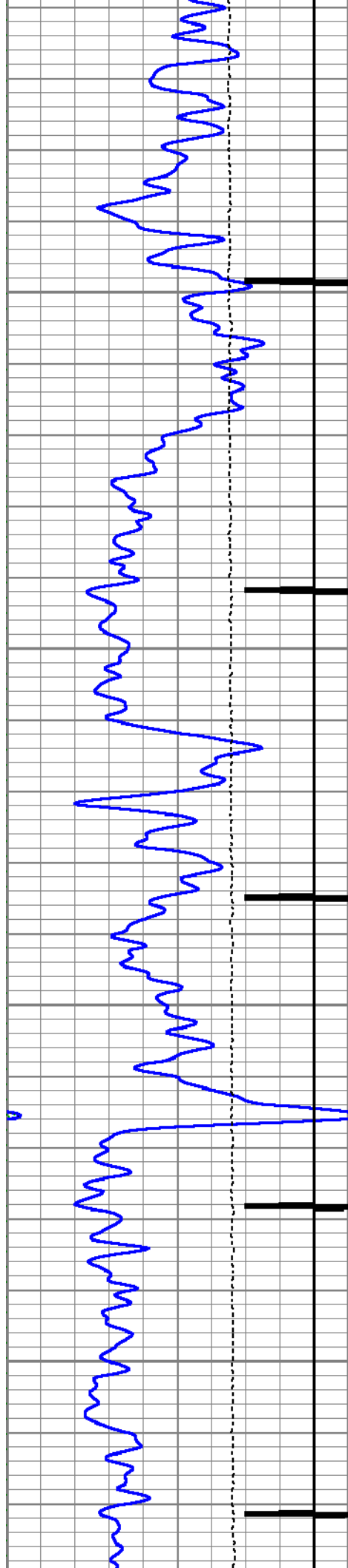
11750

11800

11850

11900



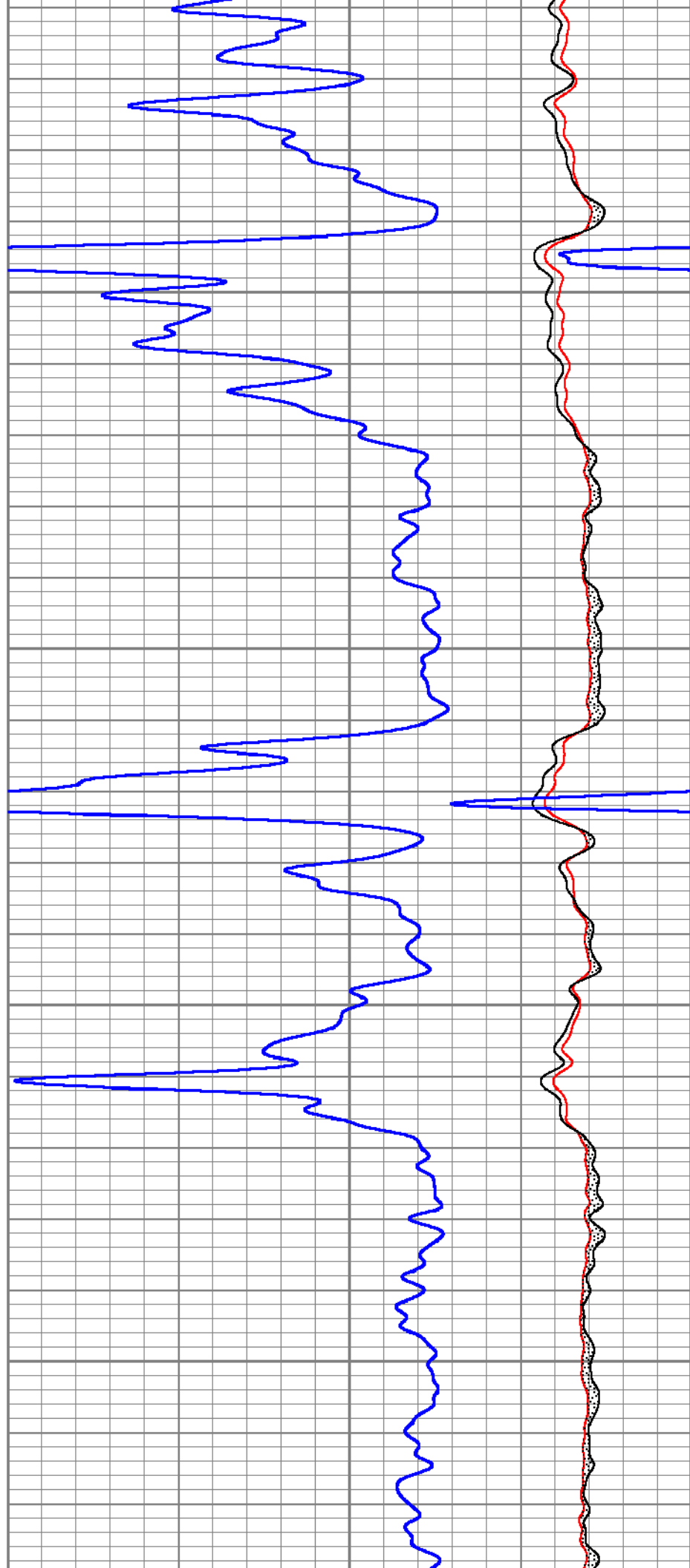


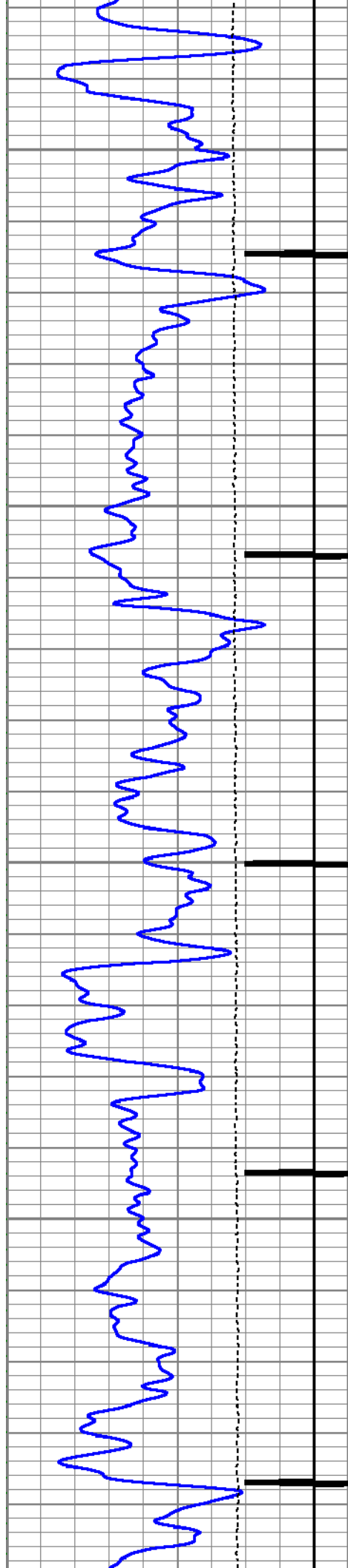
11950

12000

12050

12100





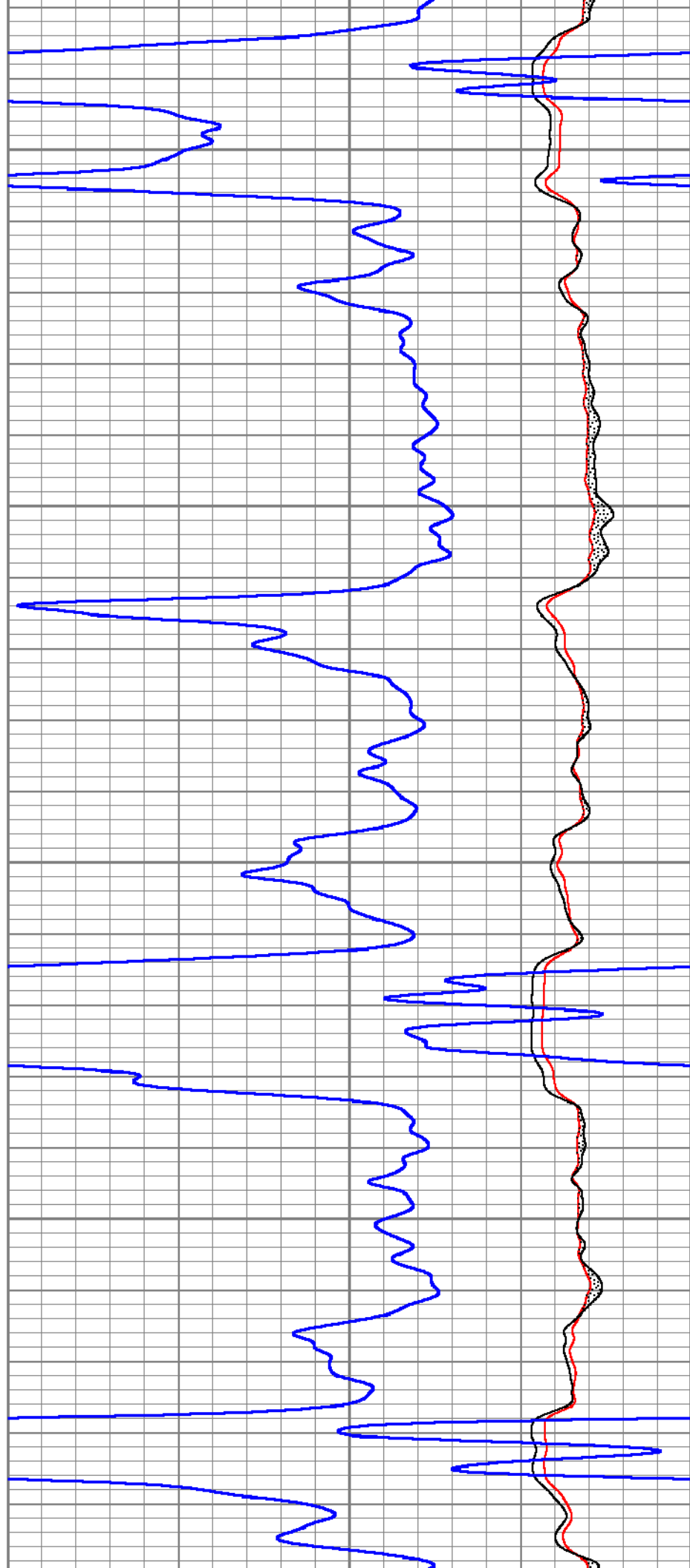
12150

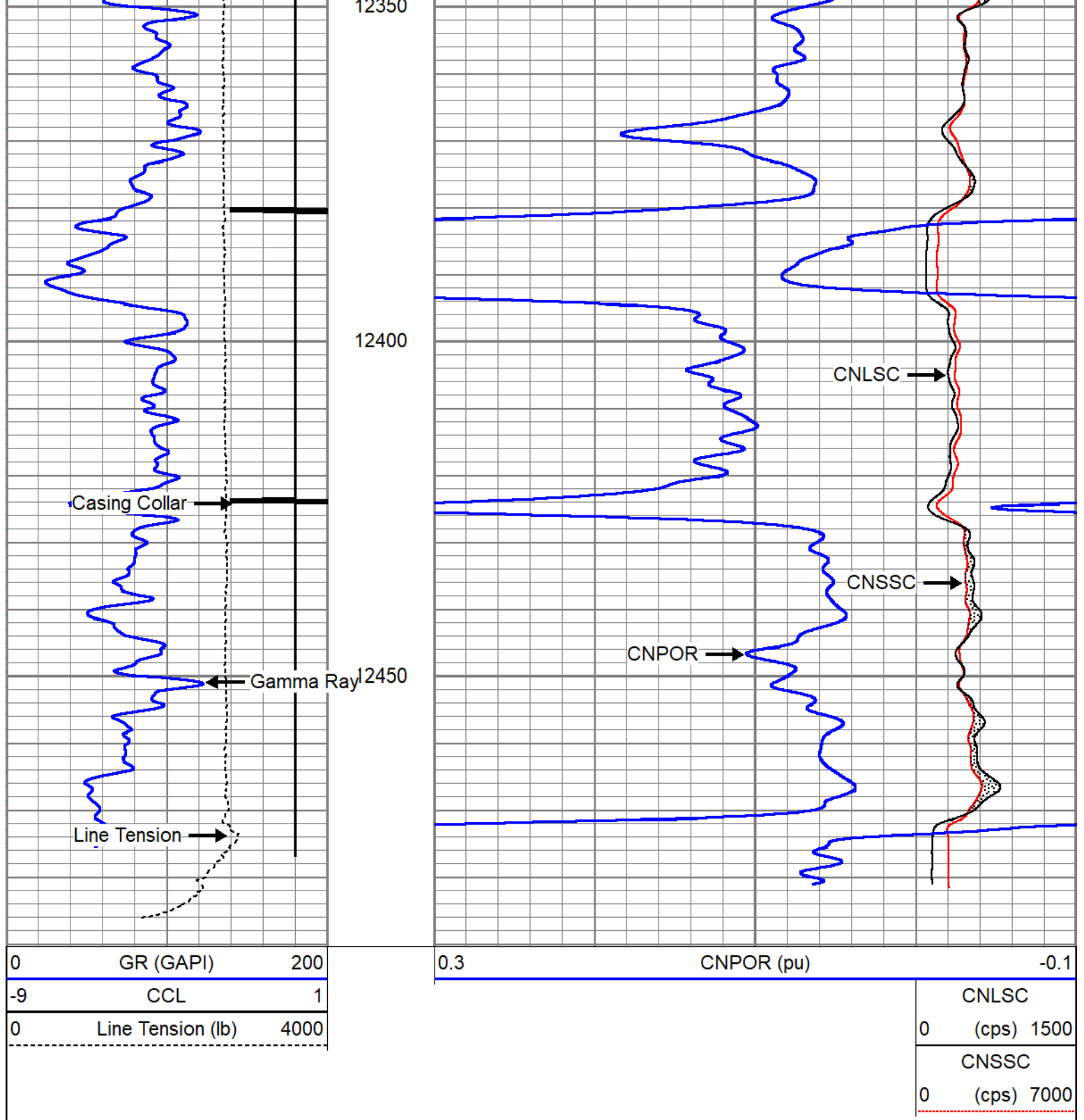
12200

12250

12300

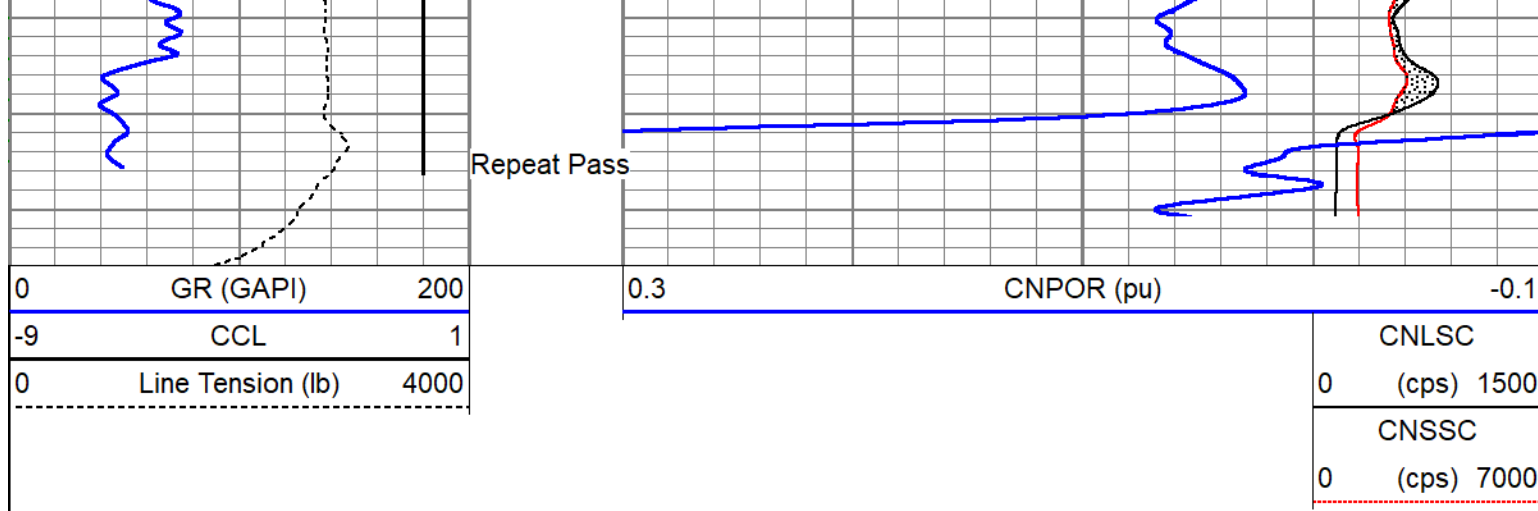
12350





Repeat Pass 5" = 100'

Database File caerus_bju b26 fed 21b-27-496_rcbl_cnl_10-10-2022.db
 Dataset Pathname repeat
 Presentation Format cnl
 Dataset Creation Tue Oct 11 15:06:16 2022
 Charted by Depth in Feet scaled 1:240



Calibration Report	
Database File	caerus_bju b26 fed 21b-27-496_rcbl_cnl_10-10-2022.db
Dataset Pathname	main
Dataset Creation	Tue Oct 11 15:12:24 2022

Compensated Neutron Calibration Report

Model:	CNT - 275Dig
Serial Number:	FW1409-35

SHOP CALIBRATION		Thu Mar 31 15:47:13 2022
	Cal Tube	Units
Tank Ratio	11.6940	SS/LS
LS Detector	68.71	cps
SS Detector	748.49	cps
Tool Ratio	10.8929	SS/LS
Tool Gain	1.0735	----

PRE-SURVEY VERIFICATION				
	SS Detector	LS Detector	Measured (p.u.)	Target (p.u.)

POST-SURVEY VERIFICATION				
	SS Detector	LS Detector	Measured (p.u.)	Target (p.u.)

Gamma Ray Calibration Report

Type / Serial:	Probe275dig / FW1403-104
----------------	--------------------------

SHOP CALIBRATION		Thu Mar 31 15:29:33 2022			
	Counts/Sec.	Gain	Offset	Jig	Units
Background	64.8				cps
Calibrator	250.4				cps
		0.8888			GAPI/cps

PRIMARY VERIFICATION

PRIMARY VERIFICATION

Background	0.0		cps
Calibrator	0.0		cps
Difference		0.0	GAPI

BEFORE SURVEY VERIFICATION

Background	0.0		cps
Calibrator	0.0		cps
Difference		0.0	GAPI

AFTER SURVEY VERIFICATION

Background	0.0		cps
Calibrator	0.0		cps
Difference		0.0	GAPI

Segmented Cement Bond Log Calibration Report

Serial Number: FW1312-30
Tool Model: Probe275acc

Calibration Casing Diameter: 4.500 in
Calibration Depth: 37.892 ft

Master Calibration, performed Tue Oct 11 14:23:01 2022:

	Raw (v)		Calibrated (mv)		Results	
	Zero	Cal	Zero	Cal	Gain	Offset
3'	0.004	0.751	0.000	81.196	108.777	-0.483
CAL	0.004	0.759				
5'	0.005	0.726	0.000	81.196	112.573	-0.511
SUM						
S1	0.005	0.758	0.000	100.000	132.825	-0.629
S2	0.005	0.760	0.000	100.000	132.357	-0.645
S3	0.004	0.764	0.000	100.000	131.609	-0.519
S4	0.004	0.759	0.000	100.000	132.338	-0.509
S5	0.004	0.758	0.000	100.000	132.670	-0.568
S6	0.004	0.750	0.000	100.000	134.077	-0.525
S7	0.004	0.747	0.000	100.000	134.639	-0.562
S8	0.005	0.748	0.000	100.000	134.666	-0.707

Internal Reference Calibration, performed (Not Performed):

	Raw (v)		Calibrated (v)		Results	
	Zero	Cal	Zero	Cal	Gain	Offset
CAL	0.000	0.000	0.004	0.759	1.000	0.000

Air Zero Calibration, performed Tue Oct 11 14:21:42 2022:

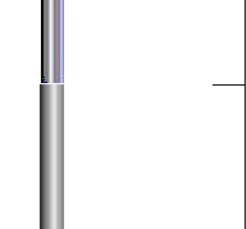
	Raw (v)		Calibrated (v)		Results	
	Zero		Zero		Offset	
3'	0.000		0.000			0.000
5'	0.000		0.000			0.000
SUM						
S1	0.000		0.000			0.000
S2	0.000		0.000			0.000

S2	0.000	0.000	0.000
S3	0.000	0.000	0.000
S4	0.000	0.000	0.000
S5	0.000	0.000	0.000
S6	0.000	0.000	0.000
S7	0.000	0.000	0.000
S8	0.000	0.000	0.000

Inclinometer Calibration Report

Performed:	Thu Jul 28 15:46:49 2022				
	Low Read.	High Read.	Low Ref.	High Ref.	
X Accelerometer	-931.00	904.00	-1.00	1.00	gee
Y Accelerometer	-899.00	884.00	-1.00	1.00	gee
Z Accelerometer	1.47	886.18	0.00	1.00	gee

Sensor	Offset (ft)	Schematic	Description	Length (ft)	O.D. (in)	Weight (lb)
			SO BS CENT-2750-4500 Slip Over 2-3/4" I.D. for 4-1/2" O.D. Casing Bow Spring Centralizer	1.33	3.25	10.00
WVFS8	14.27		RBT8acc-Probe275acc (FW1312-30) 2.75" Radial Corrosion with accelerometer	8.75	2.75	110.00
WVFS7	14.27					
WVFS6	14.27					
WVFS5	14.27					
WVFS4	14.27					
WVFS3	14.27					
WVFS2	14.27					
WVFS1	14.27					
WVF3FT	14.27					
WVF5FT	13.27					
RBT_ACCZ	10.02		SO BS CENT-2750-4500 Slip Over 2-3/4" I.D. for 4-1/2" O.D. Casing Bow Spring Centralizer	1.33	3.25	10.00
RBT_ACCY	10.02					
RBT_ACCX	10.02					
WVFSYNC	10.02					
WVFCAL	10.02					
DCCL	9.11					
CCL	9.11					
GR	7.78		GR-Probe275dig (FW1403-104) Probe Digital Gamma CCL	4.78	2.75	57.00

CNLSC	1.91		CNT-275Dig (FW1409-35) Probe Digital CNL	5.24	2.75	40.00
CNSSC	1.48		SO BS CENT-2750-4500 Slip Over 2-3/4" I.D. for 4-1/2" O.D. Casing Bow Spring Centralizer	1.33	3.25	10.00
Dataset: caerus_bju b26 fed 21b-27-496_rcbl_cnl_10-10-2022.db: field/well/run1/main Total length: 18.77 ft Total weight: 237.00 lb O.D.: 3.25 in						