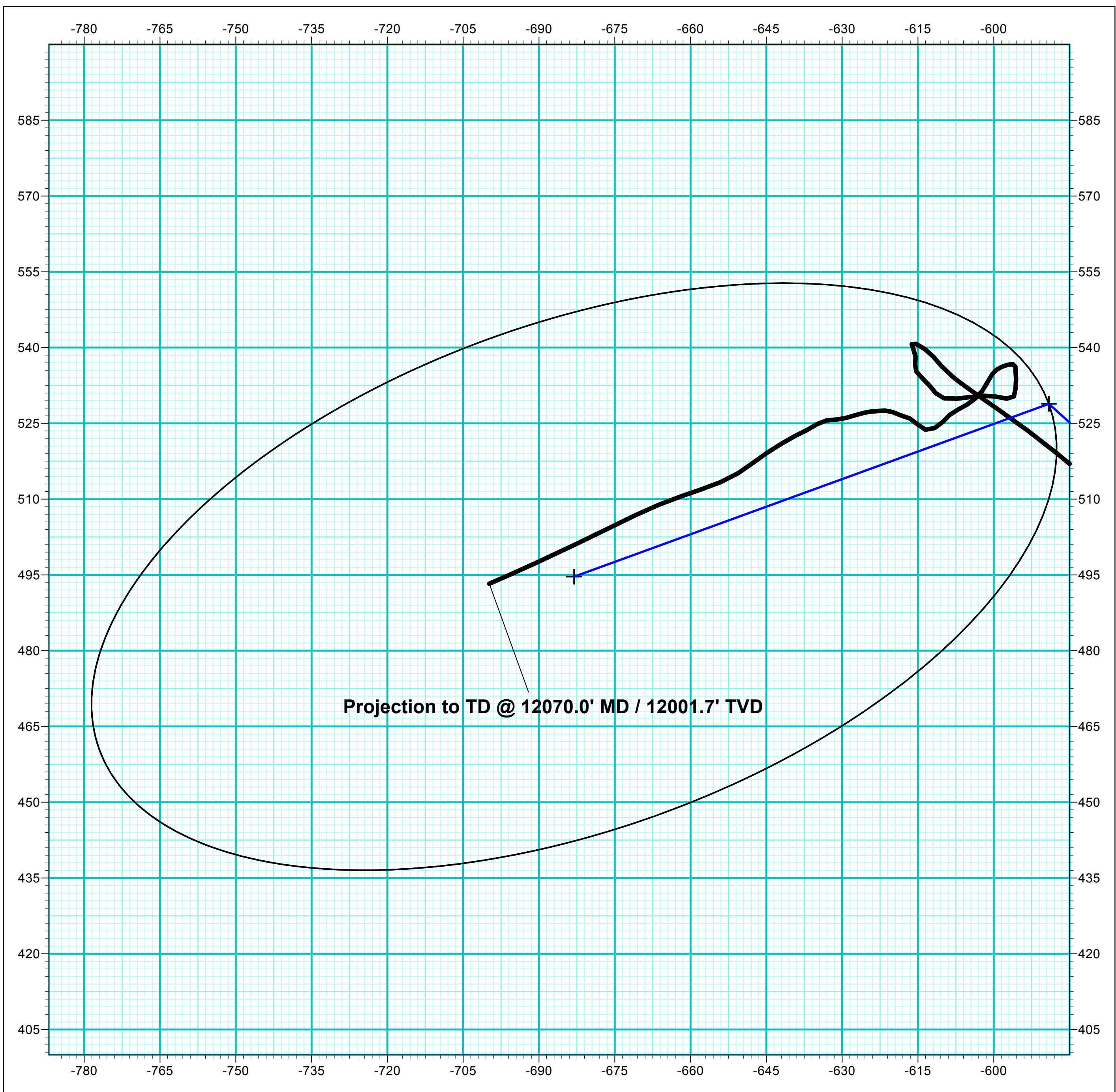
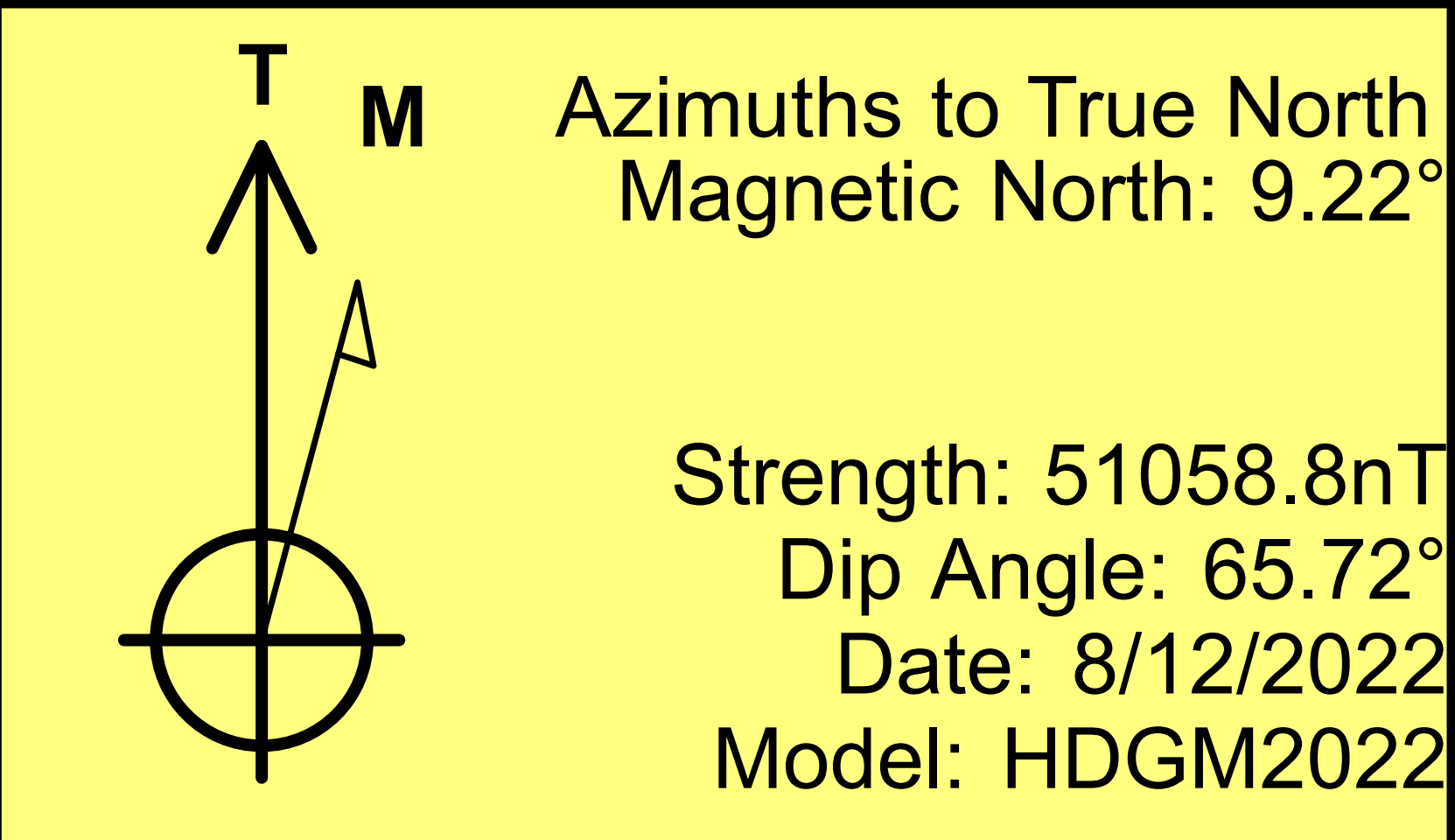


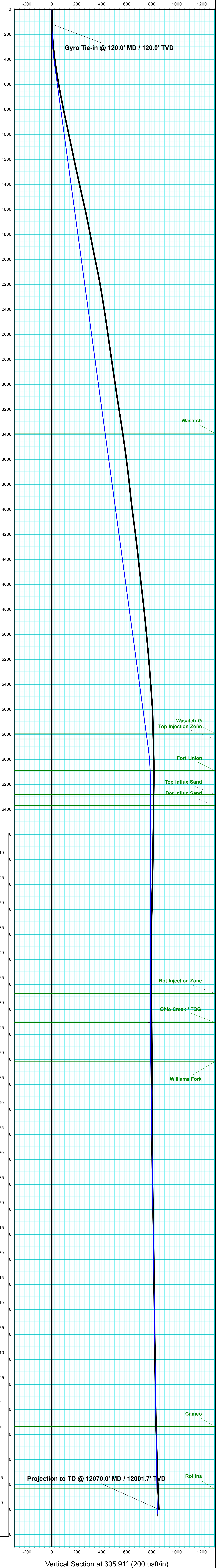
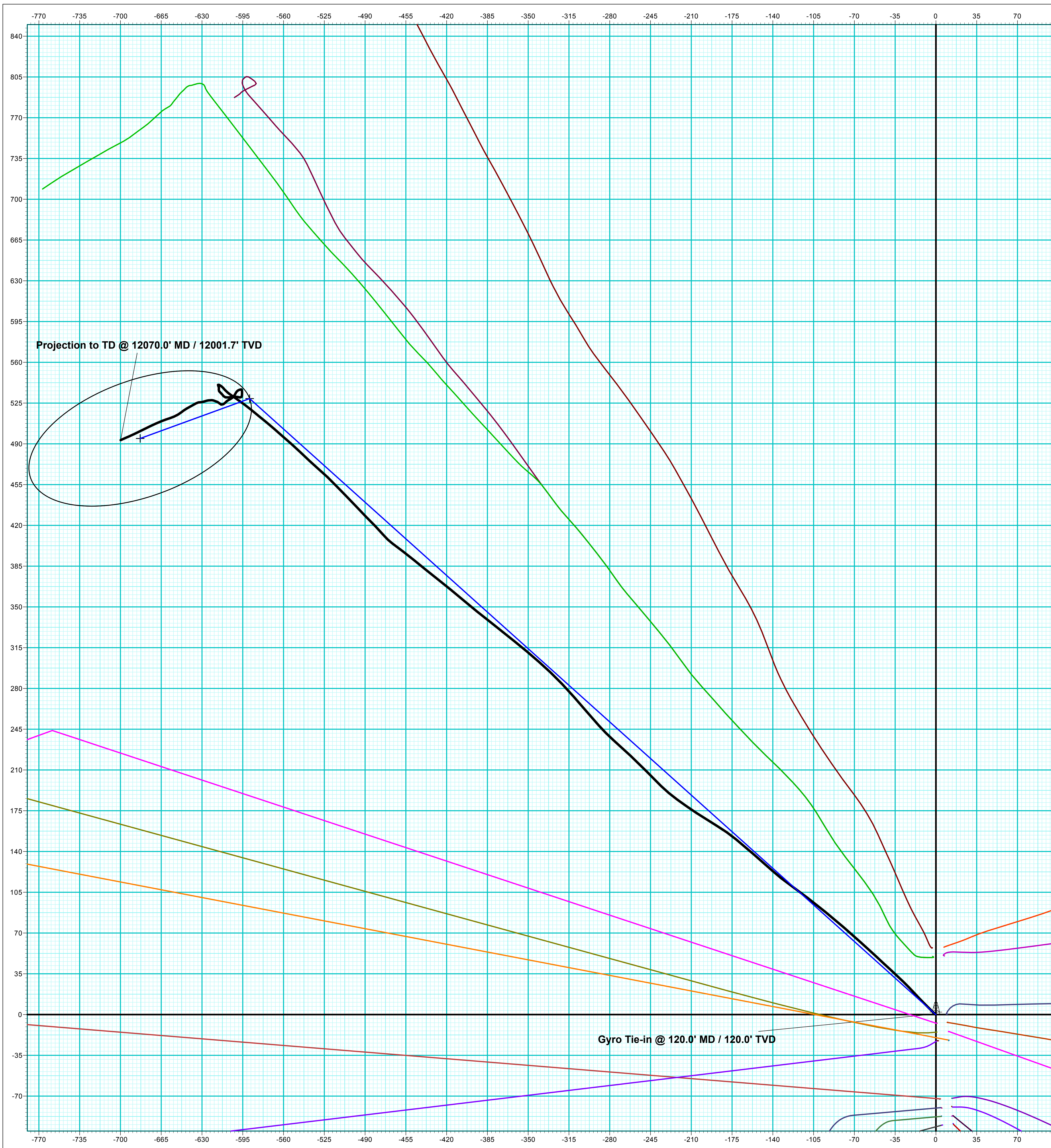
Company Name: Caerus Oil & Gas  
BJU B26 FED 11C-26 496  
Garfield County, CO  
Rig: 30'  
Created By: Will Jircik  
Date: 11:17, August 19 2022



FORMATION TOP DETAILS		
TVPDPath	MDPath	Formation
3391.0	3419.8	Wasatch
5791.0	5842.5	Wasatch G
5838.0	5889.9	Top Injection Zone
6091.0	6144.3	Fort Union
6281.0	6334.3	Top Influx Sand
6372.0	6425.3	Bot Influx Sand
7872.0	7937.3	Bot Injection Zone
8105.0	8158.3	Ohio Creek / TOG
8421.0	8474.4	Williams Fork
11337.0	11391.4	Cambo
11837.0	11891.6	Rollins



ANNOTATIONS									
MD	Inc	Azi	TVD	+N/-S	+E/-W	VSec	Departure	Annotation	
120.0	0.93	308.86	120.0	0.5	-0.8	0.9	0.9	Gyro Tie-In @ 120.0' MD / 120.0' TVD	
12070.0	5.00	246.20	12001.7	493.2	-699.8	856.1	976.2	Projection to TD @ 12070.0' MD / 12001.7' TVD	







## **Caerus Oil & Gas**

**Garfield County, CO**

**BJU B26 496 Pad**

**BJU B26 FED 11C-26 496 - Slot 11C-26**

**Wellbore #1**

**Design: Wellbore #1**

## **KLX Survey Report**

**19 August, 2022**



<b>Company:</b>	Caerus Oil & Gas	<b>Local Co-ordinate Reference:</b>	Well BJU B26 FED 11C-26 496 - Slot 11C-26
<b>Project:</b>	Garfield County, CO	<b>TVD Reference:</b>	RKB @ 8241.0usft (30')
<b>Site:</b>	BJU B26 496 Pad	<b>MD Reference:</b>	RKB @ 8241.0usft (30')
<b>Well:</b>	BJU B26 FED 11C-26 496	<b>North Reference:</b>	True
<b>Wellbore:</b>	Wellbore #1	<b>Survey Calculation Method:</b>	Minimum Curvature
<b>Design:</b>	Wellbore #1	<b>Database:</b>	EDM 5000.1 Single User Db

<b>Project</b>	Garfield County, CO		
<b>Map System:</b>	Universal Transverse Mercator (US Survey Feet)	<b>System Datum:</b>	Mean Sea Level
<b>Geo Datum:</b>	NAD 1927 - Western US		
<b>Map Zone:</b>	Zone 12N (114 W to 108 W)		

Site		BJU B26 496 Pad							
Site Position:		Northing:	14,421,469.70	usft	Latitude:	39.677515			
From:	Map	Easting:	2,445,821.30	usft	Longitude:	-108.137796			
Position Uncertainty:		0.0	usft	Slot Radius:	13-3/16	"	Grid Convergence:	1.83	°

Well	BJU B26 FED 11C-26 496 - Slot 11C-26					
Well Position	+N/-S	0.0 usft	Northing:	14,421,484.70 usft	Latitude:	39.677556
	+E/-W	0.0 usft	Easting:	2,445,820.00 usft	Longitude:	-108.137799
Position Uncertainty		0.0 usft	Wellhead Elevation:	usft	Ground Level:	8,211.0 usft

<b>Wellbore</b>	Wellbore #1				
<b>Magnetics</b>	<b>Model Name</b>	<b>Sample Date</b>	<b>Declination (°)</b>	<b>Dip Angle (°)</b>	<b>Field Strength (nT)</b>
	HDGM2022	8/12/2022	9.22	65.72	51,058.80000000

Design	Wellbore #1				
Audit Notes:					
Version:	1.0	Phase:	ACTUAL	Tie On Depth:	0.0
Vertical Section:	Depth From (TVD) (usft)	+N/-S (usft)	+E/-W (usft)	Direction (°)	
	0.0	0.0	0.0	305.91	

<b>Survey Program</b>	<b>Date</b>	8/19/2022			
<b>From (usft)</b>	<b>To (usft)</b>	<b>Survey (Wellbore)</b>	<b>Tool Name</b>	<b>Description</b>	
30.0	120.0	Sfc Gyro (Wellbore #1)	GYRO-NS	OWSG Gyrocompass Gyro	
241.0	12,070.0	KLX MWD (Wellbore #1)	MWD	OWSG MWD - Standard	

<b>Survey</b>										
<b>Measured Depth (usft)</b>	<b>Inclination (°)</b>	<b>Azimuth (°)</b>	<b>Vertical Depth (usft)</b>	<b>+N/-S (usft)</b>	<b>+E/-W (usft)</b>	<b>Vertical Section (usft)</b>	<b>Dogleg Rate (°/100usft)</b>	<b>Build Rate (°/100usft)</b>	<b>Turn Rate (°/100usft)</b>	
0.0	0.00	0.00	0.0	0.0	0.0	0.0	0.00	0.00	0.00	
30.0	0.00	0.00	30.0	0.0	0.0	0.0	0.00	0.00	0.00	
60.0	0.51	297.47	60.0	0.1	-0.1	0.1	1.70	1.70	0.00	
90.0	0.82	309.33	90.0	0.3	-0.4	0.5	1.13	1.03	39.53	
<b>Gyro Tie-in @ 120.0' MD / 120.0' TVD</b>										
120.0	0.93	308.86	120.0	0.5	-0.8	0.9	0.37	0.37	-1.57	
241.0	4.40	314.40	240.8	4.4	-4.8	6.5	2.87	2.87	4.58	
333.0	6.60	315.60	332.4	10.7	-11.1	15.2	2.39	2.39	1.30	
422.0	7.70	317.00	420.7	18.7	-18.7	26.1	1.25	1.24	1.57	
513.0	9.10	314.50	510.7	28.2	-28.0	39.2	1.59	1.54	-2.75	

<b>Company:</b>	Caerus Oil & Gas	<b>Local Co-ordinate Reference:</b>	Well BJU B26 FED 11C-26 496 - Slot 11C-26
<b>Project:</b>	Garfield County, CO	<b>TVD Reference:</b>	RKB @ 8241.0usft (30')
<b>Site:</b>	BJU B26 496 Pad	<b>MD Reference:</b>	RKB @ 8241.0usft (30')
<b>Well:</b>	BJU B26 FED 11C-26 496	<b>North Reference:</b>	True
<b>Wellbore:</b>	Wellbore #1	<b>Survey Calculation Method:</b>	Minimum Curvature
<b>Design:</b>	Wellbore #1	<b>Database:</b>	EDM 5000.1 Single User Db

Survey										
Measured Depth (usft)	Inclination (°)	Azimuth (°)	Vertical Depth (usft)	+N/-S (usft)	+E/-W (usft)	Vertical Section (usft)	Dogleg Rate (°/100usft)	Build Rate (°/100usft)	Turn Rate (°/100usft)	
603.0	10.00	312.20	599.5	38.4	-38.9	54.0	1.09	1.00	-2.56	
694.0	11.10	313.30	689.0	49.7	-51.1	70.5	1.23	1.21	1.21	
789.0	11.20	311.40	782.2	62.1	-64.7	88.8	0.40	0.11	-2.00	
883.0	12.30	311.50	874.2	74.8	-79.0	107.9	1.17	1.17	0.11	
978.0	12.30	308.60	967.0	87.8	-94.5	128.0	0.65	0.00	-3.05	
1,073.0	11.70	308.30	1,059.9	100.1	-110.0	147.8	0.63	-0.63	-0.32	
1,167.0	11.60	304.90	1,152.0	111.4	-125.2	166.7	0.74	-0.11	-3.62	
1,262.0	12.40	312.00	1,244.9	123.7	-140.6	186.4	1.77	0.84	7.47	
1,357.0	12.70	310.80	1,337.7	137.3	-156.1	207.0	0.42	0.32	-1.26	
1,451.0	12.10	309.60	1,429.5	150.4	-171.5	227.1	0.69	-0.64	-1.28	
1,546.0	12.80	301.20	1,522.2	162.2	-188.2	247.5	2.04	0.74	-8.84	
1,640.0	12.70	303.40	1,613.9	173.2	-205.7	268.2	0.53	-0.11	2.34	
1,735.0	11.50	306.20	1,706.8	184.6	-222.1	288.1	1.41	-1.26	2.95	
1,829.0	10.60	314.30	1,799.1	196.2	-235.8	306.1	1.91	-0.96	8.62	
1,924.0	11.30	316.10	1,892.3	209.0	-248.5	323.9	0.82	0.74	1.89	
2,019.0	11.90	312.40	1,985.4	222.3	-262.2	342.8	1.01	0.63	-3.89	
2,114.0	11.80	312.30	2,078.4	235.4	-276.6	362.1	0.11	-0.11	-0.11	
2,208.0	10.50	318.40	2,170.6	248.3	-289.4	380.1	1.87	-1.38	6.49	
2,303.0	9.70	319.20	2,264.1	260.8	-300.4	396.3	0.85	-0.84	0.84	
2,397.0	9.50	319.00	2,356.8	272.7	-310.7	411.6	0.22	-0.21	-0.21	
2,492.0	8.80	316.10	2,450.6	283.8	-320.9	426.4	0.88	-0.74	-3.05	
2,587.0	8.30	313.50	2,544.6	293.8	-330.9	440.3	0.67	-0.53	-2.74	
2,681.0	7.90	311.40	2,637.6	302.7	-340.6	453.5	0.53	-0.43	-2.23	
2,776.0	8.40	310.00	2,731.7	311.5	-350.9	466.9	0.57	0.53	-1.47	
2,870.0	8.50	308.70	2,824.6	320.3	-361.5	480.7	0.23	0.11	-1.38	
2,965.0	8.30	308.80	2,918.6	329.0	-372.4	494.5	0.21	-0.21	0.11	
2,994.0	8.50	308.20	2,947.3	331.6	-375.7	498.8	0.75	0.69	-2.07	
3,056.0	8.60	308.80	3,008.6	337.3	-382.9	508.0	0.22	0.16	0.97	
3,151.0	8.40	308.10	3,102.6	346.1	-393.9	522.0	0.24	-0.21	-0.74	
3,245.0	9.00	310.90	3,195.5	355.1	-404.8	536.2	0.78	0.64	2.98	
3,340.0	8.90	308.90	3,289.3	364.6	-416.2	550.9	0.34	-0.11	-2.11	
3,434.0	8.60	308.40	3,382.2	373.5	-427.3	565.2	0.33	-0.32	-0.53	
3,529.0	8.10	308.90	3,476.2	382.1	-438.1	579.0	0.53	-0.53	0.53	
3,623.0	7.80	309.50	3,569.3	390.4	-448.2	592.0	0.33	-0.32	0.64	
3,717.0	6.90	306.60	3,662.6	397.8	-457.7	604.0	1.04	-0.96	-3.09	
3,812.0	6.50	307.10	3,756.9	404.4	-466.5	615.1	0.43	-0.42	0.53	
3,907.0	6.40	320.00	3,851.3	411.7	-474.2	625.6	1.53	-0.11	13.58	
4,002.0	6.30	315.10	3,945.7	419.5	-481.3	635.8	0.58	-0.11	-5.16	
4,096.0	7.80	315.30	4,039.0	427.7	-489.4	647.2	1.60	1.60	0.21	
4,191.0	7.60	317.40	4,133.2	436.9	-498.2	659.8	0.36	-0.21	2.21	
4,286.0	7.30	314.70	4,227.4	445.7	-506.8	671.9	0.49	-0.32	-2.84	
4,380.0	6.70	316.80	4,320.7	453.9	-514.8	683.2	0.69	-0.64	2.23	
4,475.0	6.30	313.20	4,415.0	461.5	-522.3	693.8	0.60	-0.42	-3.79	

<b>Company:</b>	Caerus Oil & Gas	<b>Local Co-ordinate Reference:</b>	Well BJU B26 FED 11C-26 496 - Slot 11C-26
<b>Project:</b>	Garfield County, CO	<b>TVD Reference:</b>	RKB @ 8241.0usft (30')
<b>Site:</b>	BJU B26 496 Pad	<b>MD Reference:</b>	RKB @ 8241.0usft (30')
<b>Well:</b>	BJU B26 FED 11C-26 496	<b>North Reference:</b>	True
<b>Wellbore:</b>	Wellbore #1	<b>Survey Calculation Method:</b>	Minimum Curvature
<b>Design:</b>	Wellbore #1	<b>Database:</b>	EDM 5000.1 Single User Db

Survey									
Measured Depth (usft)	Inclination (°)	Azimuth (°)	Vertical Depth (usft)	+N/-S (usft)	+E/-W (usft)	Vertical Section (usft)	Dogleg Rate (°/100usft)	Build Rate (°/100usft)	Turn Rate (°/100usft)
4,569.0	6.00	310.90	4,508.5	468.3	-529.8	703.8	0.41	-0.32	-2.45
4,664.0	6.80	313.00	4,602.9	475.4	-537.7	714.3	0.88	0.84	2.21
4,758.0	6.70	314.00	4,696.3	483.0	-545.7	725.3	0.16	-0.11	1.06
4,853.0	6.00	311.00	4,790.7	490.1	-553.4	735.7	0.82	-0.74	-3.16
4,948.0	6.00	311.40	4,885.2	496.6	-560.9	745.6	0.04	0.00	0.42
5,042.0	5.40	311.40	4,978.7	502.8	-567.9	754.9	0.64	-0.64	0.00
5,137.0	5.30	308.90	5,073.3	508.5	-574.7	763.7	0.27	-0.11	-2.63
5,231.0	5.00	309.70	5,166.9	513.9	-581.2	772.1	0.33	-0.32	0.85
5,326.0	4.70	309.40	5,261.6	519.0	-587.4	780.1	0.32	-0.32	-0.32
5,421.0	4.20	306.30	5,356.3	523.5	-593.2	787.5	0.58	-0.53	-3.26
5,515.0	4.00	305.10	5,450.0	527.4	-598.7	794.2	0.23	-0.21	-1.28
5,610.0	4.20	305.00	5,544.8	531.3	-604.2	801.0	0.21	0.21	-0.11
5,705.0	1.90	311.10	5,639.6	534.4	-608.3	806.1	2.44	-2.42	6.42
5,800.0	1.60	316.50	5,734.6	536.4	-610.4	808.9	0.36	-0.32	5.68
5,894.0	1.40	322.10	5,828.6	538.2	-612.0	811.3	0.26	-0.21	5.96
5,989.0	1.30	300.50	5,923.5	539.7	-613.6	813.5	0.54	-0.11	-22.74
6,084.0	1.20	301.20	6,018.5	540.7	-615.4	815.6	0.11	-0.11	0.74
6,178.0	0.70	180.60	6,112.5	540.7	-616.2	816.2	1.78	-0.53	-128.30
6,273.0	0.90	148.30	6,207.5	539.5	-615.9	815.2	0.51	0.21	-34.00
6,367.0	0.80	179.60	6,301.5	538.2	-615.5	814.1	0.50	-0.11	33.30
6,462.0	1.00	188.10	6,396.5	536.7	-615.6	813.4	0.25	0.21	8.95
6,557.0	0.80	148.00	6,491.5	535.3	-615.3	812.4	0.68	-0.21	-42.21
6,651.0	0.80	130.20	6,585.5	534.3	-614.5	811.1	0.26	0.00	-18.94
6,746.0	0.90	142.70	6,680.5	533.3	-613.5	809.7	0.22	0.11	13.16
6,840.0	0.90	129.60	6,774.4	532.2	-612.5	808.3	0.22	0.00	-13.94
6,935.0	1.10	150.60	6,869.4	531.0	-611.5	806.7	0.44	0.21	22.11
7,029.0	1.50	100.50	6,963.4	530.0	-609.8	804.8	1.23	0.43	-53.30
7,124.0	1.60	83.50	7,058.4	529.9	-607.3	802.7	0.49	0.11	-17.89
7,219.0	1.50	83.10	7,153.3	530.2	-604.8	800.8	0.11	-0.11	-0.42
7,313.0	1.60	84.70	7,247.3	530.5	-602.2	798.9	0.12	0.11	1.70
7,408.0	1.40	102.30	7,342.3	530.3	-599.8	796.8	0.53	-0.21	18.53
7,502.0	1.50	99.20	7,436.2	529.9	-597.4	794.7	0.14	0.11	-3.30
7,597.0	0.80	15.70	7,531.2	530.3	-596.0	793.8	1.70	-0.74	-87.89
7,692.0	1.20	9.30	7,626.2	531.9	-595.7	794.5	0.44	0.42	-6.74
7,786.0	1.10	355.80	7,720.2	533.8	-595.6	795.5	0.31	-0.11	-14.36
7,881.0	0.60	357.30	7,815.2	535.2	-595.7	796.4	0.53	-0.53	1.58
7,976.0	0.60	356.60	7,910.2	536.2	-595.7	797.0	0.01	0.00	-0.74
8,070.0	0.60	271.10	8,004.2	536.7	-596.3	797.7	0.87	0.00	-90.96
8,165.0	0.70	254.30	8,099.2	536.6	-597.3	798.5	0.23	0.11	-17.68
8,259.0	0.80	247.10	8,193.2	536.2	-598.5	799.2	0.15	0.11	-7.66
8,354.0	0.70	231.30	8,288.2	535.5	-599.5	799.7	0.24	-0.11	-16.63
8,449.0	0.70	214.90	8,383.1	534.7	-600.3	799.8	0.21	0.00	-17.26
8,544.0	0.90	209.00	8,478.1	533.6	-601.0	799.7	0.23	0.21	-6.21

<b>Company:</b>	Caerus Oil & Gas	<b>Local Co-ordinate Reference:</b>	Well BJU B26 FED 11C-26 496 - Slot 11C-26
<b>Project:</b>	Garfield County, CO	<b>TVD Reference:</b>	RKB @ 8241.0usft (30')
<b>Site:</b>	BJU B26 496 Pad	<b>MD Reference:</b>	RKB @ 8241.0usft (30')
<b>Well:</b>	BJU B26 FED 11C-26 496	<b>North Reference:</b>	True
<b>Wellbore:</b>	Wellbore #1	<b>Survey Calculation Method:</b>	Minimum Curvature
<b>Design:</b>	Wellbore #1	<b>Database:</b>	EDM 5000.1 Single User Db

Survey									
Measured Depth (usft)	Inclination (°)	Azimuth (°)	Vertical Depth (usft)	+N/-S (usft)	+E/-W (usft)	Vertical Section (usft)	Dogleg Rate (°/100usft)	Build Rate (°/100usft)	Turn Rate (°/100usft)
8,638.0	0.60	211.10	8,572.1	532.5	-601.6	799.6	0.32	-0.32	2.23
8,733.0	1.10	213.00	8,667.1	531.3	-602.4	799.5	0.53	0.53	2.00
8,827.0	1.20	232.40	8,761.1	530.0	-603.7	799.7	0.43	0.11	20.64
8,922.0	1.30	233.20	8,856.1	528.7	-605.3	800.4	0.11	0.11	0.84
9,017.0	1.30	248.80	8,951.1	527.7	-607.2	801.3	0.37	0.00	16.42
9,111.0	1.10	222.50	9,045.0	526.6	-608.8	801.9	0.62	-0.21	-27.98
9,206.0	1.10	226.80	9,140.0	525.3	-610.1	802.2	0.09	0.00	4.53
9,301.0	1.40	237.60	9,235.0	524.1	-611.7	802.8	0.40	0.32	11.37
9,395.0	1.10	287.70	9,329.0	523.7	-613.5	804.1	1.16	-0.32	53.30
9,490.0	1.30	318.70	9,424.0	524.8	-615.1	806.0	0.70	0.21	32.63
9,585.0	1.10	292.60	9,518.9	526.0	-616.7	808.0	0.61	-0.21	-27.47
9,680.0	1.20	286.30	9,613.9	526.6	-618.5	809.8	0.17	0.11	-6.63
9,774.0	0.90	298.10	9,707.9	527.2	-620.1	811.4	0.39	-0.32	12.55
9,869.0	1.00	265.80	9,802.9	527.5	-621.5	812.8	0.57	0.11	-34.00
9,963.0	0.90	267.10	9,896.9	527.4	-623.1	814.0	0.11	-0.11	1.38
10,057.0	0.80	262.80	9,990.9	527.3	-624.5	815.1	0.13	-0.11	-4.57
10,152.0	0.90	255.60	10,085.8	527.0	-625.9	816.0	0.15	0.11	-7.58
10,247.0	1.10	254.00	10,180.8	526.6	-627.5	817.1	0.21	0.21	-1.68
10,341.0	1.10	252.00	10,274.8	526.1	-629.2	818.2	0.04	0.00	-2.13
10,436.0	1.20	268.60	10,369.8	525.8	-631.0	819.5	0.36	0.11	17.47
10,530.0	1.30	260.20	10,463.8	525.6	-633.1	821.0	0.22	0.11	-8.94
10,625.0	1.20	236.60	10,558.8	524.8	-635.0	822.1	0.55	-0.11	-24.84
10,720.0	1.50	242.20	10,653.7	523.7	-636.9	823.0	0.34	0.32	5.89
10,814.0	2.00	244.20	10,747.7	522.4	-639.5	824.3	0.54	0.53	2.13
10,909.0	1.80	236.10	10,842.6	520.9	-642.2	825.6	0.35	-0.21	-8.53
11,004.0	2.10	238.30	10,937.6	519.1	-644.9	826.8	0.33	0.32	2.32
11,098.0	2.00	230.40	11,031.5	517.2	-647.7	827.9	0.32	-0.11	-8.40
11,193.0	2.30	239.70	11,126.4	515.2	-650.6	829.1	0.48	0.32	9.79
11,288.0	2.40	246.10	11,221.4	513.4	-654.0	830.8	0.30	0.11	6.74
11,382.0	2.60	252.10	11,315.3	511.9	-657.9	833.1	0.35	0.21	6.38
11,476.0	2.60	250.10	11,409.2	510.5	-661.9	835.5	0.10	0.00	-2.13
11,571.0	3.00	248.40	11,504.1	508.9	-666.2	838.1	0.43	0.42	-1.79
11,665.0	3.50	244.00	11,597.9	506.7	-671.1	840.8	0.59	0.53	-4.68
11,760.0	4.00	243.80	11,692.7	504.0	-676.7	843.7	0.53	0.53	-0.21
11,855.0	4.60	244.50	11,787.4	500.9	-683.1	847.1	0.63	0.63	0.74
11,949.0	5.00	245.00	11,881.1	497.5	-690.2	850.8	0.43	0.43	0.53
12,010.0	5.00	246.20	11,941.9	495.4	-695.1	853.5	0.17	0.00	1.97
<b>Projection to TD @ 12070.0' MD / 12001.7' TVD</b>									
12,070.0	5.00	246.20	12,001.7	493.2	-699.8	856.1	0.00	0.00	0.00



<b>Company:</b>	Caerus Oil & Gas	<b>Local Co-ordinate Reference:</b>	Well BJU B26 FED 11C-26 496 - Slot 11C-26
<b>Project:</b>	Garfield County, CO	<b>TVD Reference:</b>	RKB @ 8241.0usft (30')
<b>Site:</b>	BJU B26 496 Pad	<b>MD Reference:</b>	RKB @ 8241.0usft (30')
<b>Well:</b>	BJU B26 FED 11C-26 496	<b>North Reference:</b>	True
<b>Wellbore:</b>	Wellbore #1	<b>Survey Calculation Method:</b>	Minimum Curvature
<b>Design:</b>	Wellbore #1	<b>Database:</b>	EDM 5000.1 Single User Db

Design Annotations				
Measured Depth (usft)	Vertical Depth (usft)	Local Coordinates		Comment
		+N/-S (usft)	+E/-W (usft)	
12,070.0	12,001.7	493.2	-699.8	Projection to TD @ 12070.0' MD / 12001.7' TVD

Checked By: _____	Approved By: _____	Date: _____
-------------------	--------------------	-------------