



Terra Energy Partners, LLC

SURFACE POST JOB REPORT

FEDERAL NR 444-36 05-045-24478
S:3 T:6S R:94W Garfield CO

CallSheet #: 82491
Proposal #: 61594



SURFACE Post Job Report

Attention: Mr. Dustin Childers | (936) 524-8828 | dchilders@terraep.com
Terra Energy Partners, LLC
4828 Loop Central Dr., Suite 900 | Houston, TX 77081

Dear Mr. Dustin Childers,

Thank you for the opportunity to provide cementing services on this well. American Cementing strives to achieve complete customer satisfaction. If you have any questions regarding the services or data provided, please contact American Cementing at any time.

Sincerely,

Holly Mbugua

Field Engineer II | (720) 505-1300 | holly.mbugua@americacementing.com

Field Office 28730 US-6, Rifle, CO 81650
Phone: (970) 657-1157

Job Details & Summary

Geometry

| Type | Function | OD (in) | ID (in) | Weight (lb/ft) | Thread | Top (ft) | Bottom (ft) | Excess (%) |
|-----------|----------|---------|---------|----------------|--------|----------|-------------|------------|
| Casing | Outer | 20 | 19.124 | 94 | n/a | 0 | 82 | 0 |
| Open Hole | Outer | n/a | 13.5 | n/a | n/a | 120 | 500 | 16 |
| Open Hole | Outer | n/a | 13.5 | n/a | n/a | 500 | 1133 | 16 |
| Casing | Inner | 9.625 | 8.921 | 36 | n/a | 0 | 1133 | 0 |

Equipment / People

| Unit Type | Unit | Power Unit | Employee #1 |
|----------------------|---------|--------------|---------------------|
| Light Duty Vehicles | LDV-061 | | Aden, Mark |
| Cement Trailer Float | CTF-286 | TRC(TRB)-202 | Morales, Adrian |
| Cement Pump Float | CPF-136 | TRH-1137 | Woronovitch, Collin |

Timing

| Event | Date/Time |
|-----------------|-----------------|
| Call Out | 7/15/2022 18:00 |
| Depart Facility | 7/15/2022 23:30 |
| On Location | 7/16/2022 00:20 |
| Rig Up Iron | 7/16/2022 00:35 |
| Job Started | 7/16/2022 03:53 |
| Job Completed | 7/16/2022 05:27 |
| Rig Down Iron | 7/16/2022 05:35 |
| Depart Location | 7/16/2022 06:30 |

General Job Information

| Metrics | Value |
|-------------------------|------------|
| Well Fluid Density | 9.2 lb/gal |
| Well Fluid Type | WBM |
| Rig Circulation Vol | 600 bbls |
| Rig Circulation Time | 10 hours |
| Calculated Displacement | 84 bbls |
| Actual Displacement | 84 bbls |
| Total Spacer to Surface | 0 bbls |
| Total CMT to Surface | 29 bbls |
| Well Topped Out | No |

Job Details

| Metrics | Value |
|--------------------------------|------------|
| Flare Prior to Job | No |
| Flare Prior to Job | 0 units |
| Flare During Job | No |
| Flare During Job | 0 units |
| Flare at End of Job | No |
| Flare at End of Job | 0 units |
| Well Full Prior to Job | Yes |
| Well Fluid Density Into Well | 9.2 lb/gal |
| Well Fluid Density Out of Well | 9.2 lb/gal |

Job Details (cont.)

| Metrics | Value |
|---------|-------|
| BHCT | 80 °F |
| BHST | 98 °F |

Water Analysis

| Metrics | Value | Recommended |
|------------------|-----------|-------------|
| Water Source | None | |
| Temperature | 68.3 °F | 50-80 °F |
| pH Level | 7 | 5.5-8.5 |
| Chlorides | 0 mg/L | 0-3000 mg/L |
| Total Alkalinity | 180 | 0-1000 |
| Total Hardness | 425 mg/L | 0-500 mg/L |
| Carbonates | 0 mg/L | 0-100 mg/L |
| Sulfates | <200 mg/L | 0-1500 mg/L |
| Potassium | 0 mg/L | 0-3000 mg/L |
| Iron | 0 mg/L | 0-300 mg/L |

Circulation

| Lost Circulation Experienced |
|------------------------------|
| No |

Job Execution Information

| Fluid | Product | Function | Density (lb/gal) | Yield (ft ³ /sk) | Water Rq. (gal/sk) | Water Rq. (gal/bbl) | Volume (sks) | Volume (bbl) | Designed Top (ft) |
|-------|---------|-------------------|------------------|-----------------------------|--------------------|---------------------|--------------|--------------|-------------------|
| 1 | Water | Flush | 8.34 | | | 42.00 | | 20.00 | 0 |
| 2 | Lead | Lead | 12.30 | 2.21 | 12.72 | | 179.00 | 70.56 | 0 |
| 3 | Tail | Tail | 12.80 | 1.97 | 10.87 | | 183.00 | 64.05 | 500 |
| 4 | Water | DisplacementFinal | 8.34 | | | 42.00 | | 82.00 | 0 |

Job Fluid Details

| Fluid | Type | Fluid | Product | Function | Conc. | Uom |
|-------|------|-------|------------------|-----------------|--------|-------|
| 2 | Lead | Lead | ASTM TYPE I/II | Cement | 100.00 | % |
| 2 | Lead | Lead | A-7P | Accelerator | 2.00 | lb/sk |
| 2 | Lead | Lead | FP-24 | Defoamer | 0.30 | %BWOB |
| 2 | Lead | Lead | IntegraSeal POLI | LostCirculation | 0.25 | lb/sk |
| 2 | Lead | Lead | STATIC FREE | Other | 0.01 | lb/sk |
| 2 | Lead | Lead | XCem-1101 | Thixotropic | 1.00 | lb/sk |
| 3 | Tail | Tail | ASTM TYPE I/II | Cement | 100.00 | % |
| 3 | Tail | Tail | A-7P | Accelerator | 2.00 | lb/sk |
| 3 | Tail | Tail | FP-24 | Defoamer | 0.30 | %BWOB |
| 3 | Tail | Tail | IntegraSeal POLI | LostCirculation | 0.25 | lb/sk |
| 3 | Tail | Tail | STATIC FREE | Other | 0.01 | lb/sk |
| 3 | Tail | Tail | XCem-1101 | Thixotropic | 1.00 | lb/sk |

Job Logs

| Line | Event | Date (MM/DD/YY) | Time (HH:MM) | Density (lb/gal) | Pump Rate (bpm) | Pump Volume (bbls) | Pipe Pressure (psi) | Comment |
|------|------------------------|--------------------|-----------------|---------------------|-----------------------|--------------------------|---------------------------|--|
| 1 | Callout | 7/15/2022 | 15:00 | | | | | Yard call 2200 20220715 on location 0000 20220716 |
| 2 | Depart For Location | 7/15/2022 | 23:30 | | | | | Leave Rifle yard for location |
| 3 | Arrive On Location | 7/16/2022 | 00:20 | | | | | Arrive on location, rig running casing |
| 4 | Spot Equipment | 7/16/2022 | 00:25 | | | | | Spot in all equipment |
| 5 | Rig Up Iron | 7/16/2022 | 00:35 | | | | | Pre rig up safety meeting, rig in all equipment and lines to the standpipe |
| 6 | Safety Meeting | 7/16/2022 | 03:10 | | | | | Pre job safety meeting with company man |
| 7 | End Circulation | 7/16/2022 | 03:20 | | | | | Rig ended circulation, circulated 1 hr @ 10 BBLs/min total of 600 BBLs |
| 8 | Pump Spacer | 7/16/2022 | 03:53 | 8.34 | 5 | 20 | 283 | Pumping freshwater spacer, returns |
| 9 | Pressure Test Lines | 7/16/2022 | 03:57 | | | | 3000 | Pressure test |
| 10 | Pump Lead Cement | 7/16/2022 | 04:03 | 12.3 | 5 | 0 | 415 | Pumping lead cement |
| 11 | Pump Lead Cement | 7/16/2022 | 04:11 | 12.3 | 6.5 | 50 | 565 | Pumping lead cement |
| 12 | Pump Lead Cement | 7/16/2022 | 04:14 | 12.3 | 6.5 | 71 | 496 | Pumping lead cement |
| 13 | Pump Tail Cement | 7/16/2022 | 04:14 | 12.8 | 6.5 | 0 | 524 | Pumping tail cement |
| 14 | Pump Tail Cement | 7/16/2022 | 04:21 | 12.8 | 6.5 | 50 | 565 | Pumping tail cement |
| 15 | Pump Tail Cement | 7/16/2022 | 04:23 | 12.8 | 6.5 | 64 | 531 | Pumping tail cement |
| 16 | Drop Top Plug | 7/16/2022 | 04:24 | | | | | Dropped top plug verified by company man |
| 17 | Pump Displacement | 7/16/2022 | 04:28 | 8.34 | 5 | 0 | 306 | Pumping freshwater displacement |
| 18 | Pump Displacement | 7/16/2022 | 04:37 | 8.34 | 8 | 50 | 679 | Pumping freshwater displacement |
| 19 | Cement Back to Surface | 7/16/2022 | 04:38 | | | 55 | | Cement to surface @ 55 BBLs pumped. Total of 29 BBLs to surface |
| 20 | Pump Displacement | 7/16/2022 | 04:42 | 8.34 | 4 | 84 | 420 | Pumping freshwater displacement |
| 21 | Land Plug | 7/16/2022 | 04:42 | | | | 1115 | Land plug, FCP 420 PSI bumped to 1120 PSI |
| 22 | Check Floats | 7/16/2022 | 04:45 | | | | | Bled pressure, floats held .5 BBLs bled back |
| 23 | Casing Test | 7/16/2022 | 04:50 | | | | 1290 | Take pressure up to 1290 psi. |
| 24 | End Casing Test | 7/16/2022 | 05:27 | | | | 1268 | Pressure at 1268 psi prior to bleeding off. |
| 25 | Rig Down Iron | 7/16/2022 | 05:35 | | | | | Pre rig down safety meeting, rig down lines |
| 26 | Depart Location | 7/16/2022 | 06:30 | | | | | Leave location for Rifle shop |

Pump Diagrams

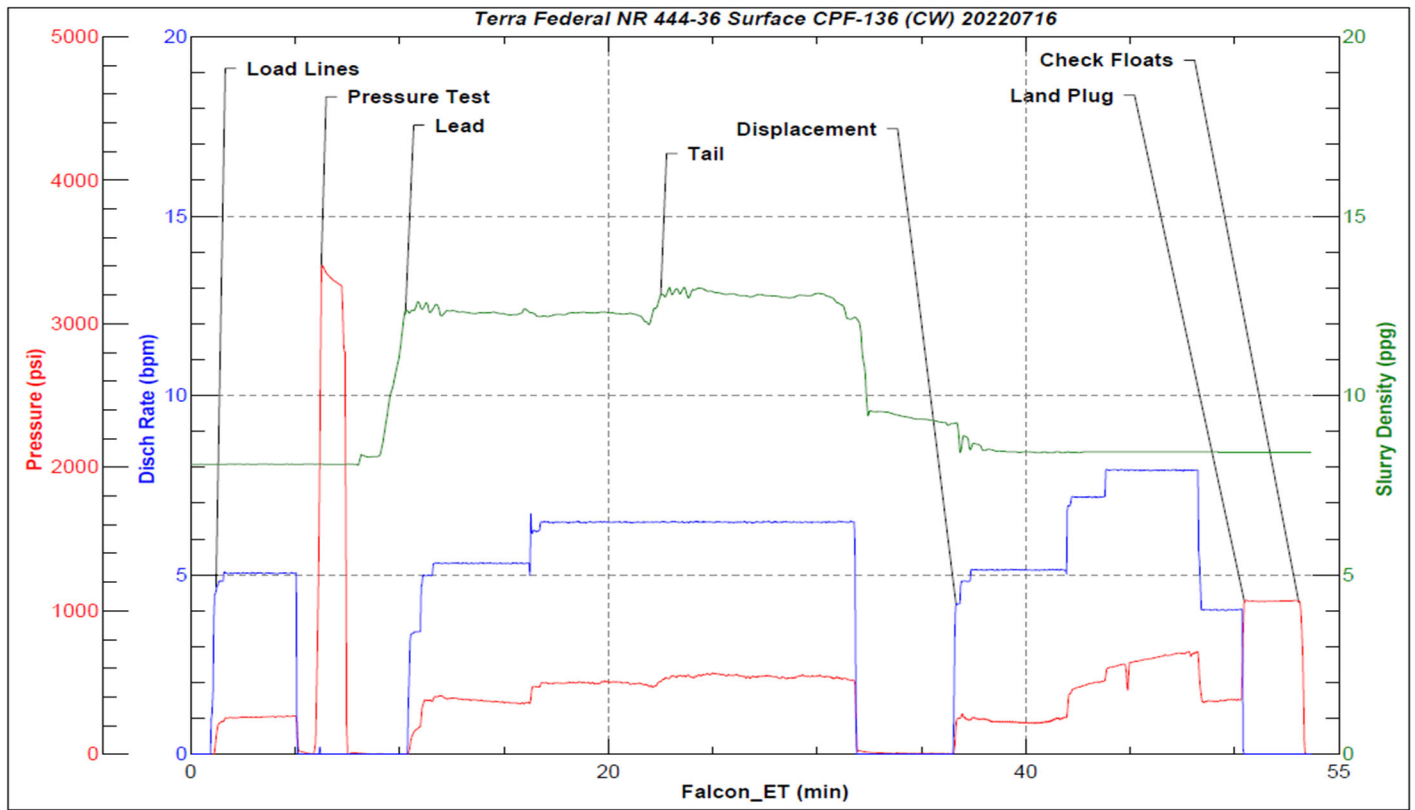


JobMaster Program Version 5.01C1

Job Number: 82491

Customer: Terra

Well Name: Federal NR 444-36



Job Start: Saturday, July 16, 2022

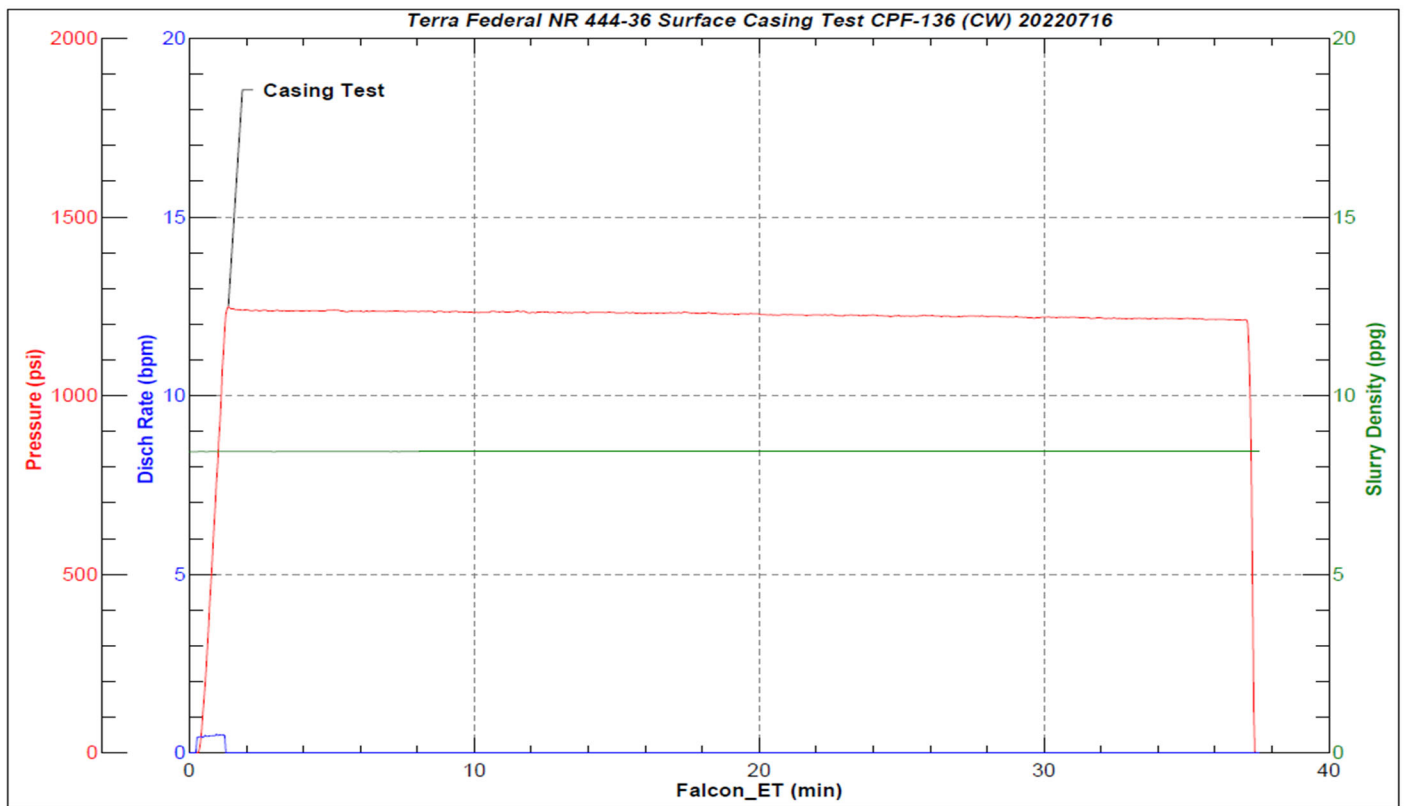


JobMaster Program Version 5.01C1

Job Number: 82491

Customer: Terra

Well Name: Federal NR 444-36



Job Start: Saturday, July 16, 2022