



Terra Energy Partners, LLC

SURFACE POST JOB REPORT

FEDERAL NR 333-4 05-045-24475
S:3 T:6S R:94W Garfield CO

CallSheet #: 81880
Proposal #: 60458



SURFACE Post Job Report

Attention: Mr. Dustin Childers | (936) 524-8828 | dchilders@terraep.com
Terra Energy Partners, LLC
4828 Loop Central Dr., Suite 900 | Houston, TX 77081

Dear Mr. Dustin Childers,

Thank you for the opportunity to provide cementing services on this well. American Cementing strives to achieve complete customer satisfaction. If you have any questions regarding the services or data provided, please contact American Cementing at any time.

Sincerely,

Krystal Schell

Field Engineer I | (719) 992-1830 | krystal.schell@americacementing.com

Field Office 28730 US-6, Rifle, CO 81650
Phone: (970) 657-1157

Job Details & Summary

Geometry

Type	Function	OD (in)	ID (in)	Weight (lb/ft)	Thread	Top (ft)	Bottom (ft)	Excess (%)
Casing	Outer	20	19.124	94	n/a	0	90	0
Open Hole	Outer	n/a	13.5	n/a	n/a	120	500	16
Open Hole	Outer	n/a	13.5	n/a	n/a	500	1129	16
Casing	Inner	9.625	8.921	36	n/a	0	1129	0

Equipment / People

Unit Type	Unit	Power Unit	Employee #1
Cement Trailer Float	CTF-108	TRC(TRB)-195	Bonin, Matthew
Cement Pump Float	CPF-052	TRH-957	Gonzales, Ivan
Light Duty Vehicles	LDV-082		Kelsey, John

Timing

Event	Date/Time
Call Out	6/10/2022 10:00
Depart Facility	6/10/2022 11:00
On Location	6/10/2022 11:30
Rig Up Iron	6/10/2022 12:00
Job Started	6/10/2022 17:11
Job Completed	6/10/2022 18:00
Rig Down Iron	6/10/2022 18:10
Depart Location	6/10/2022 18:30

General Job Information

Metrics	Value
Well Fluid Density	9.3 lb/gal
Well Fluid Type	WBM
Rig Circulation Vol	300 bbls
Rig Circulation Time	1 hours
Calculated Displacement	83.4 bbls
Actual Displacement	83.4 bbls
Total Spacer to Surface	20 bbls
Total CMT to Surface	20 bbls
Well Topped Out	N/A

Job Details

Metrics	Value
Flare Prior to Job	No
Flare Prior to Job	0 units
Flare During Job	No
Flare During Job	0 units
Flare at End of Job	No
Flare at End of Job	0 units
Well Full Prior to Job	Yes
Well Fluid Density Into Well	9.3 lb/gal
Well Fluid Density Out of Well	9.3 lb/gal

Job Details (cont.)

Metrics	Value
BHCT	80 °F
BHST	97 °F

Water Analysis

Metrics	Value	Recommended
Water Source	Upright Rig Tank	
Temperature	65 °F	50-80 °F
pH Level	7	5.5-8.5
Chlorides	0 mg/L	0-3000 mg/L
Total Alkalinity	80	0-1000
Total Hardness	>450 mg/L	0-500 mg/L
Carbonates	0 mg/L	0-100 mg/L
Sulfates	<200 mg/L	0-1500 mg/L
Potassium	0 mg/L	0-3000 mg/L
Iron	0 mg/L	0-300 mg/L

Circulation

Lost Circulation Experienced
No

Job Execution Information

Fluid	Product	Function	Density (lb/gal)	Yield (ft ³ /sk)	Water Rq. (gal/sk)	Water Rq. (gal/bbl)	Volume (sks)	Volume (bbl)	Designed Top (ft)
1	Water	Flush	8.34			42.00		20.00	0
2	Lead	Lead	12.30	2.21	12.72		179.00	70.56	0
3	Tail	Tail	12.80	1.97	10.87		183.00	64.05	500
4	Water	DisplacementFinal	8.34			42.00		82.00	0

Job Fluid Details

Fluid	Type	Fluid	Product	Function	Conc.	Uom
2	Lead	Lead	ASTM TYPE I/II	Cement	100.00	%
2	Lead	Lead	A-7P	Accelerator	2.00	lb/sk
2	Lead	Lead	FP-24	Defoamer	0.30	%BWOB
2	Lead	Lead	IntegraSeal POLI	LostCirculation	0.25	lb/sk
2	Lead	Lead	STATIC FREE	Other	0.01	lb/sk
2	Lead	Lead	XCem-1101	Thixotropic	1.00	lb/sk
3	Tail	Tail	ASTM TYPE I/II	Cement	100.00	%
3	Tail	Tail	A-7P	Accelerator	2.00	lb/sk
3	Tail	Tail	FP-24	Defoamer	0.30	%BWOB
3	Tail	Tail	IntegraSeal POLI	LostCirculation	0.25	lb/sk
3	Tail	Tail	STATIC FREE	Other	0.01	lb/sk
3	Tail	Tail	XCem-1101	Thixotropic	1.00	lb/sk

Job Logs

Line	Event	Date (MM/DD/YY)	Time (HH:MM)	Density (lb/gal)	Pump Rate (bpm)	Pump Volume (bbls)	Pipe Pressure (psi)	Comment
1	Callout	6/10/2022	10:00					Crew called to prepare for a surface cement job, RTS is 14:00
2	Safety Meeting	6/10/2022	10:45					Journey management meeting
3	Depart Yard	6/10/2022	11:00					Depart Rifle, CO yard for location
4	Arrive on Location	6/10/2022	11:30					Arrive on location, verify all proper products, equipment and job procedures with customer
5	Safety Meeting	6/10/2022	11:45					Rig up meeting
6	Spot Units	6/10/2022	11:55					Spot all equipment for rig up
7	Rig up	6/10/2022	12:00					Rig up all equipment
8	Standby	6/10/2022	13:00					Crew on standby while rig runs casing and circulates the well
9	Safety Meeting	6/10/2022	16:45					Pre job meeting with all crews involved
10	Load lines	6/10/2022	17:11	8.34	3	3	80	Load lines for a psi test
11	Pressure Test	6/10/2022	17:12	8.34	1	1	3520	Pressure test pump and lines to cement head
12	Spacer	6/10/2022	17:20	8.34	6	20	310	20 bbls fresh spacer
13	Lead Cement	6/10/2022	17:24	12.3	7	10	450	70 BBLS Lead CMT – 12.3 # 2.21 Y 12.7 MW 179 sks 10 bbls away
14	Lead Cement	6/10/2022	17:29	12.3	7	30	490	40 bbls away
15	Lead Cement	6/10/2022	17:33	12.3	7	30	520	70 bbls away swap to Tail cement
16	Tail Cement	6/10/2022	17:34	12.8	7	10	550	64 BBLS Tail CMT – 12.8 # 1.97 Y 10.9 MW 183 sks 10 bbls away
17	Tail Cement	6/10/2022	17:37	12.8	7	20	601	30 bbls away
18	Tail Cement	6/10/2022	17:41	12.8	7	34	620	64 bbls away, shutdown to washup, and send plug
19	Washup	6/10/2022	17:42					Washup Pump
20	Displacement	6/10/2022	17:45	8.34	4	10	380	Send plug and begin displacement 10 bbls away
21	Displacement	6/10/2022	17:51	8.34	7.3	20	421	30 bbls away
22	Displacement	6/10/2022	17:55	8.34	5	30	430	60 bbls away
23	Displacement	6/10/2022	17:59	8.34	3.6	15	330	75 bbls away
24	Land Plug	6/10/2022	18:00	8.34	3.6	8.4	340	83.4 bbls away land plug
25	Check Floats	6/10/2022	18:02					Check floats, floats held with .5 bbl back Estimated 20 bbls cement to surface
26	Safety Meeting	6/10/2022	18:05					Rig down meeting
27	Rig Down	6/10/2022	18:10					Rig down all equipment
28	Safety Meeting	6/10/2022	18:20					Journey management meeting
29	Depart Location	6/10/2022	18:30					Crew leaves location

Pump Diagrams

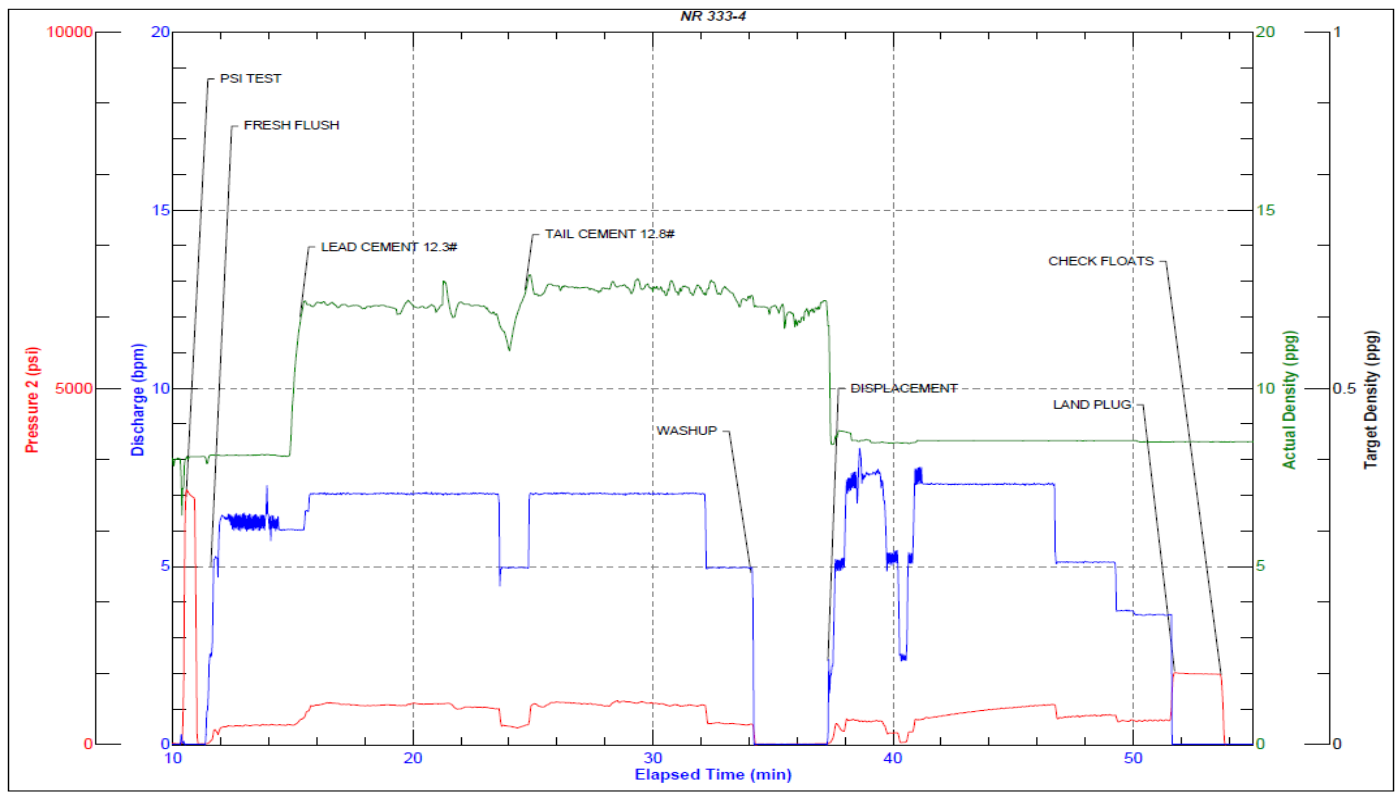


JobMaster Program Version 5.01C1

Job Number: 81880

Customer: Terra

Well Name: NR 333-4



Job Start: Friday, June 10, 2022