



Terra Energy Partners, LLC

LONG STRING POST JOB REPORT

FEDERAL NR 333-4 05-045-24475
S:3 T:6S R:94W Garfield CO

CallSheet #: 81941
Proposal #: 60458



LONG STRING Post Job Report

Attention: Mr. Dustin Childers | (936) 524-8828 | dchilders@terraep.com
Terra Energy Partners, LLC
4828 Loop Central Dr., Suite 900 | Houston, TX 77081

Dear Mr. Dustin Childers,

Thank you for the opportunity to provide cementing services on this well. American Cementing strives to achieve complete customer satisfaction. If you have any questions regarding the services or data provided, please contact American Cementing at any time.

Sincerely,

Krystal Schell

Field Engineer I | (719) 992-1830 | krystal.schell@americacementing.com

Field Office 28730 US-6, Rifle, CO 81650
Phone: (970) 657-1157

Job Details & Summary

Geometry

Type	Function	OD (in)	ID (in)	Weight (lb/ft)	Thread	Top (ft)	Bottom (ft)	Excess (%)
Casing	Outer	9.625	8.921	36	n/a	0	1129	0
Open Hole	Outer	n/a	8.75	n/a	n/a	1100	8213	45
Open Hole	Outer	n/a	8.75	n/a	n/a	8213	11030	45
Casing	Inner	4.5	4	11.6	n/a	0	11030	0

Equipment / People

Unit Type	Unit	Power Unit	Employee #1
AS Cement Trailer Float	CTF-7145	TRC(TRB)-090	
AS Cement Trailer Float	CTF(FTF)-148	TRC(TRB)-201	
AS Cement Trailer Float	CTF-138	TRC(TRB)-180	
Field Storage Silo	FSS(CTS)-438		
Field Storage Silo	FSS(CTS)-470		
Cement Trailer Float	CTF-254	TRC(TRB)-053	Bonin, Matthew
Light Duty Vehicles	LDV-083		Putnam, Gage
Light Duty Vehicles	LDV-062		Lancaster, Stephen
Cement Pump Float	CPF-053	TRH-1140	Kirchenwitz, Jacob

Timing

Event	Date/Time
Call Out	6/15/2022 12:37
Depart Facility	6/15/2022 17:50
On Location	6/15/2022 18:36
Rig Up Iron	6/15/2022 18:45
Job Started	6/15/2022 21:15
Job Completed	6/16/2022 00:45
Rig Down Iron	6/16/2022 00:52
Depart Location	6/16/2022 02:30

General Job Information

Metrics	Value
Well Fluid Density	10.9 lb/gal
Well Fluid Type	WBM
Rig Circulation Vol	677.5 bbls
Rig Circulation Time	1.4 hours
Calculated Displacement	170 bbls
Actual Displacement	170 bbls
Total Spacer to Surface	0 bbls
Total CMT to Surface	0 bbls
Well Topped Out	N/A

Job Details

Metrics	Value
Flare Prior to Job	No
Flare Prior to Job	0 units
Flare During Job	No
Flare During Job	0 units
Flare at End of Job	No
Flare at End of Job	0 units
Well Full Prior to Job	Yes
Well Fluid Density Into Well	10.9 lb/gal
Well Fluid Density Out of Well	10.9 lb/gal

Job Details (cont.)

Metrics	Value
BHCT	192 °F
BHST	253 °F

Circulation

Lost Circulation Experienced
No

Job Execution Information

Fluid	Product	Function	Density (lb/gal)	Yield (ft ³ /sk)	Water Rq. (gal/sk)	Water Rq. (gal/bbl)	Volume (sk)	Volume (bbl)	Designed Top (ft)
1	Water	Flush	8.34			42.00		10.00	5879
2	Mud Flush	Flush	8.45			40.86		20.00	6005
3	Water	Flush	8.34			42.00		10.00	6257
4	12.7 Lead	Lead	12.70	2.00	10.99		408.00	145.50	6383
5	14.2 Tail	Tail	14.20	1.72	8.09		748.00	229.32	8213
6	Displacement	DisplacementFinal	8.34			42.00		172.00	0

Job Fluid Details

Fluid	Type	Fluid	Product	Function	Conc.	Uom
2	Flush	Mud Flush	SAPP	Surfactant	10.00	lb/bbl
2	Flush	Mud Flush	SS-201	Surfactant	0.50	gal/bbl
4	Lead	12.7 Lead	ASTM TYPE I/II	Cement	100.00	%
4	Lead	12.7 Lead	BA-90	BondEnhancer	3.00	lb/sk
4	Lead	12.7 Lead	FL-66	FluidLoss	0.50	%BWOB
4	Lead	12.7 Lead	FP-24	Defoamer	0.30	%BWOB
4	Lead	12.7 Lead	GW-86	Viscosifier	0.10	%BWOB
4	Lead	12.7 Lead	IntegraSeal POLI	LostCirculation	0.25	lb/sk
4	Lead	12.7 Lead	R-3	Retarder	0.45	%BWOB
4	Lead	12.7 Lead	STATIC FREE	Other	0.01	lb/sk
5	Tail	14.2 Tail	CLASS G	Cement	80.00	%
5	Tail	14.2 Tail	FLY ASH (POZZOLAN)	Extender	20.00	%
5	Tail	14.2 Tail	FL-66	FluidLoss	0.40	%BWOB
5	Tail	14.2 Tail	FP-24	Defoamer	0.30	%BWOB
5	Tail	14.2 Tail	GW-86	Viscosifier	0.10	%BWOB
5	Tail	14.2 Tail	IntegraSeal POLI	LostCirculation	0.25	lb/sk
5	Tail	14.2 Tail	R-3	Retarder	0.15	%BWOB
5	Tail	14.2 Tail	S-8	StrengthRetrogression	27.00	%BWOB

Job Logs

Line	Event	Date (MM/DD/YY)	Time (HH:MM)	Density (lb/gal)	Pump Rate (bpm)	Pump Volume (bbls)	Pipe Pressure (psi)	Comment
1	Callout	6/15/2022	12:37					CREW CALLED OUT FOR ON LOCATION TIME OF 19:00 6/15/22
2	Depart Location	6/15/2022	17:50					DEPART RCO YARD FOR LOCATION
3	Arrive On Location	6/15/2022	18:36					ARRIVE ON CUSTOMER SITE
4	Rig Up Iron	6/15/2022	18:45					RIG UP IRON AND HOSES
5	Safety Meeting	6/15/2022	21:15					JSA SAFETY MEETING WITH AC CREW, RIG HANDS, AND CUSTOMER REP
6	Fill Lines	6/15/2022	22:18	8.34	5	10		FILL LINES WITH FRESH WATER
7	Pressure Test Lines	6/15/2022	22:20	8.34	2	1	5000	PRESSURE TEST PUMP AND LINES TO 5000 PSI, HAD A LEAK CHANGED RUBBER AND RETESTED
8	Other	6/15/2022	22:29	8.45	4.7	20	569	PUMP MUD FLUSH + SURFACTANT
9	Other	6/15/2022	22:32	8.34	4.7	10	657	PUMP FRESH WATER FLUSH
10	Pump Lead Cement	6/15/2022	22:37	12.7	5	10	737	BEGIN PUMPING LEAD CEMENT. DENSITY VERIFIED WITH MUD SCALE
11	Pump Lead Cement	6/15/2022	22:46	12.7	7	50	1123	50 BBLS LEAD CEMENT PUMPED
12	Pump Lead Cement	6/15/2022	22:56	12.7	5	100	551	100 BBLS LEAD CEMENT PUMPED
13	Pump Lead Cement	6/15/2022	23:06	12.7	4.7	145	477	145 BBLS LEAD CEMENT PUMPED/ SWAP TO TAIL
14	Pump Tail Cement	6/15/2022	23:07	14.2	5	10	513	BEGIN PUMPING TAIL CEMENT. DENSITY VERIFIED WITH MUD SCALE
15	Pump Tail Cement	6/15/2022	23:20	14.2	3.7	50	349	50 BBLS TAIL CEMENT PUMPED
16	Pump Tail Cement	6/15/2022	23:29	14.2	5	100	534	100 BBLS TAIL CEMENT PUMPED
17	Pump Tail Cement	6/15/2022	23:40	14.2	4.5	150	436	150 BBLS TAIL CEMENT PUMPED
18	Pump Tail Cement	6/15/2022	23:47	14.2	3.7	200	497	200 BBLS TAIL CEMENT PUMPED
19	Pump Tail Cement	6/15/2022	23:56	14.2	3.7	230	360	230 BBLS TAIL CEMENT PUMPED
20	Clean Pumps and Lines	6/15/2022	23:57					SHUT DOWN, WASH UP PUMP AND LINES
21	Drop Top Plug	6/16/2022	00:15	9	4	10	842	DROP PLUG, VERIFIED BY CUSTOMER REP. BEGIN KCL DISPLACEMENT
22	Pump Displacement	6/16/2022	00:28	8.34	7.8	50	803	50 BBLS KCL DISPLACEMENT PUMPED
23	Pump Displacement	6/16/2022	00:34	8.34	7.8	100	1454	100 BBLS KCL DISPLACEMENT PUMPED
24	Pump Displacement	6/16/2022	00:40	8.34	8	150	2485	150 BBLS KCL DISPLACEMENT PUMPED,
25	Pump Displacement	6/16/2022	00:45	8.34	3.5	170	2350	170 BBLS KCL DISPLACEMENT PUMPED, SLOWED RATE LAST 10 BBLS TO 3.5 BPM
26	Land Plug	6/16/2022	00:45	8.34	3.5	170	3350	LAND PLUG. FCP - 2554 PSI, BUMPED TO 2350
27	Check Floats	6/16/2022	00:48					CHECK FLOATS. FLOATS HELD, 2 BBLS BACK
28	Rig Down Iron	6/16/2022	00:52					RIG DOWN IRON AND HOSES
29	Depart Location	6/16/2022	02:30					DEPART LOCATION FOR RCO YARD

Pump Diagrams

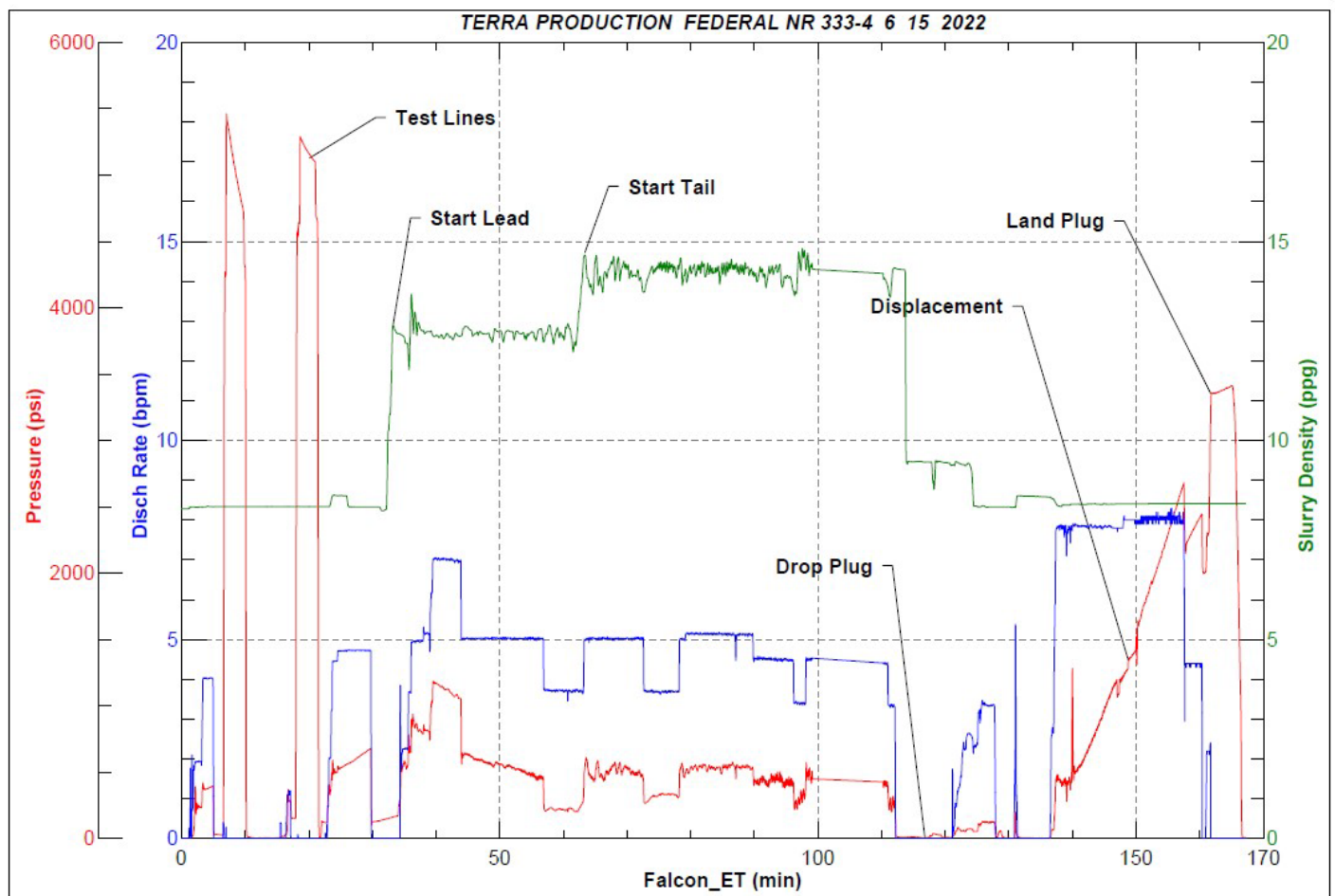


JobMaster Program Version 5.01C1

Job Number: 81941

Customer: TERRA

Well Name: NR 333-4



Job Start: Wednesday, June 15, 2022