



Lat40°, Inc. 6250 W. 10th Street, Unit 2, Greeley, CO 970-515-5294

## PLUGGED AND ABANDONED WELL EXHIBIT

STATE #16-13

Q: SWSW  
SECTION: 16  
TOWNSHIP: 3N  
RANGE: 63W  
6TH. P.M.  
WELD COUNTY, CO  
DATE: 9/22/2022



VIEW NORTH



VIEW WEST



VIEW EAST



VIEW SOUTH

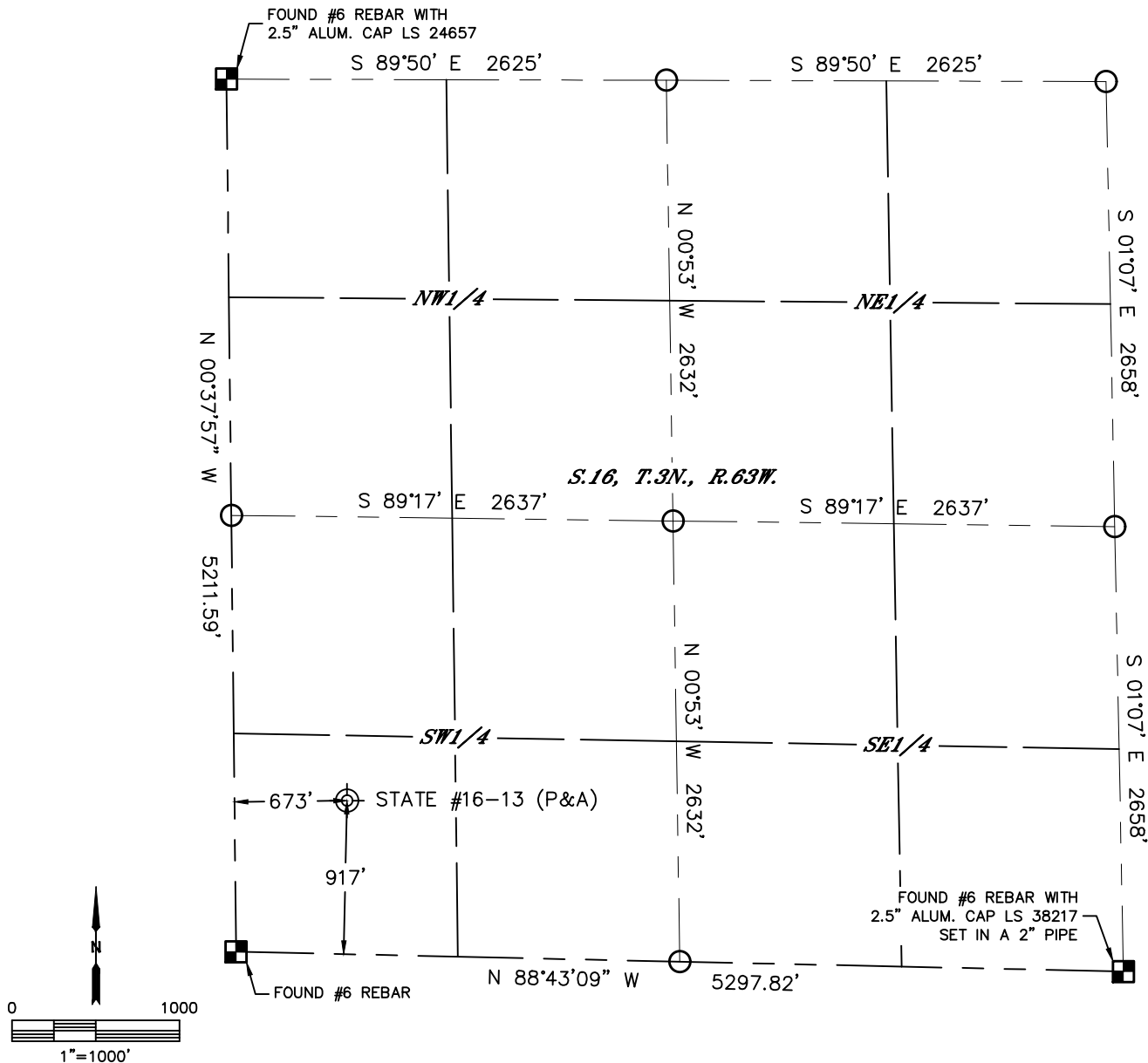


Lat40°, Inc. 6250 W. 10th Street, Unit 2, Greeley, CO 970-515-5294

# PLUGGED AND ABANDONED WELL EXHIBIT

STATE #16-13

Q: SWSW  
SECTION: 16  
TOWNSHIP: 3N  
RANGE: 63W  
6TH. P.M.  
WELD COUNTY, CO



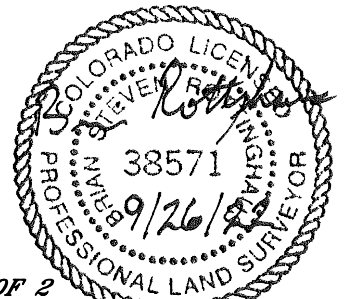
CLIENT: NOBLE ENERGY, INC.					LANDMAN: GREG WILSON					
INSTRUMENT OPERATOR: SCOTT SHERARD					SURVEY DATE: 9/22/2022		SURFACE USE: RANGELAND			
SHL FOOTAGE			SHL LAT °		SHL LONG °		SHL PDOP	SHL ELEV (FT.)	SHL 1/4/1/4	SHL S-T-R
917	FSL	673	FWL	40.22104	-104.44972		1.3	4854	SWSW	16-3-63
DESCRIPTION: FOUND CAPPED PIPE 1.0' BELOW SURFACE.										

## NOTE:

- 1) Bearings shown are Grid Bearings of the Colorado State Plane Coordinate System, North Zone, North American Datum 1983. The lineal dimensions as contained herein are based upon the "U.S. Survey Foot."
- 2) Distances to section lines measured at 90 degrees from said section lines.
- 3) Ground elevations are based on an observed GPS elevation (NAVD 1988 DATUM).
- 4) Latitude and Longitude shown are (NAD 83 DATUM).
- 5) Sectional data as shown hereon is from previous surveys and was not verified for this P&A Exhibit.
- 6) This map does not represent a boundary survey.

## LEGEND

- = ALIQUOT MONUMENT AS DESCRIBED
- = CALCULATED POSITION PER LONGHORN V41-10-9XRLNB WELL LOCATION PLAT
- ⊙ = ABANDONED WELL



SHEET 1 OF 2

Brian S. Rottinghaus—On behalf of Lat40°, Inc.  
Colorado Licensed Professional Land Surveyor No. 38571  
DATE: 9/26/2022  
PROJECT#: 2022348