

Crestone Peak Resources Operating LLC, Lussing Trust 4-64 19-20 4C3H,
4D2H, 3C1H, 3D3H, 3C2H, 3D1H
005-07385, 07389, 07392, 07390, 07391, 07387
Inspection #688313101

9/6/2022

Routine Field Inspection



CRESTONE PEAK
RESOURCES

BURLINGTON RESOURCES
LUSSING TRUST 4-64 19-20 3C2H, 3D1H, 3D3H, 4C1H
NW/SW SEC. 19 TWP: 4S RNG: 64W
ARAPAHOE COUNTY, CO. ELEVATION 5714'
-ACCESS LOCATION FROM WATKINS ROAD

24 HR. Wellhead Area Restricted CONTACT: 1-303-655-7748
LOCAL EMERGENCY SERVICES: 911 NO SMOKING

Colorado Oil and Gas Conservation Commission
39.68763, -104.60136, 5656.2ft, 159-
09/06/2022 12:29:01 PM

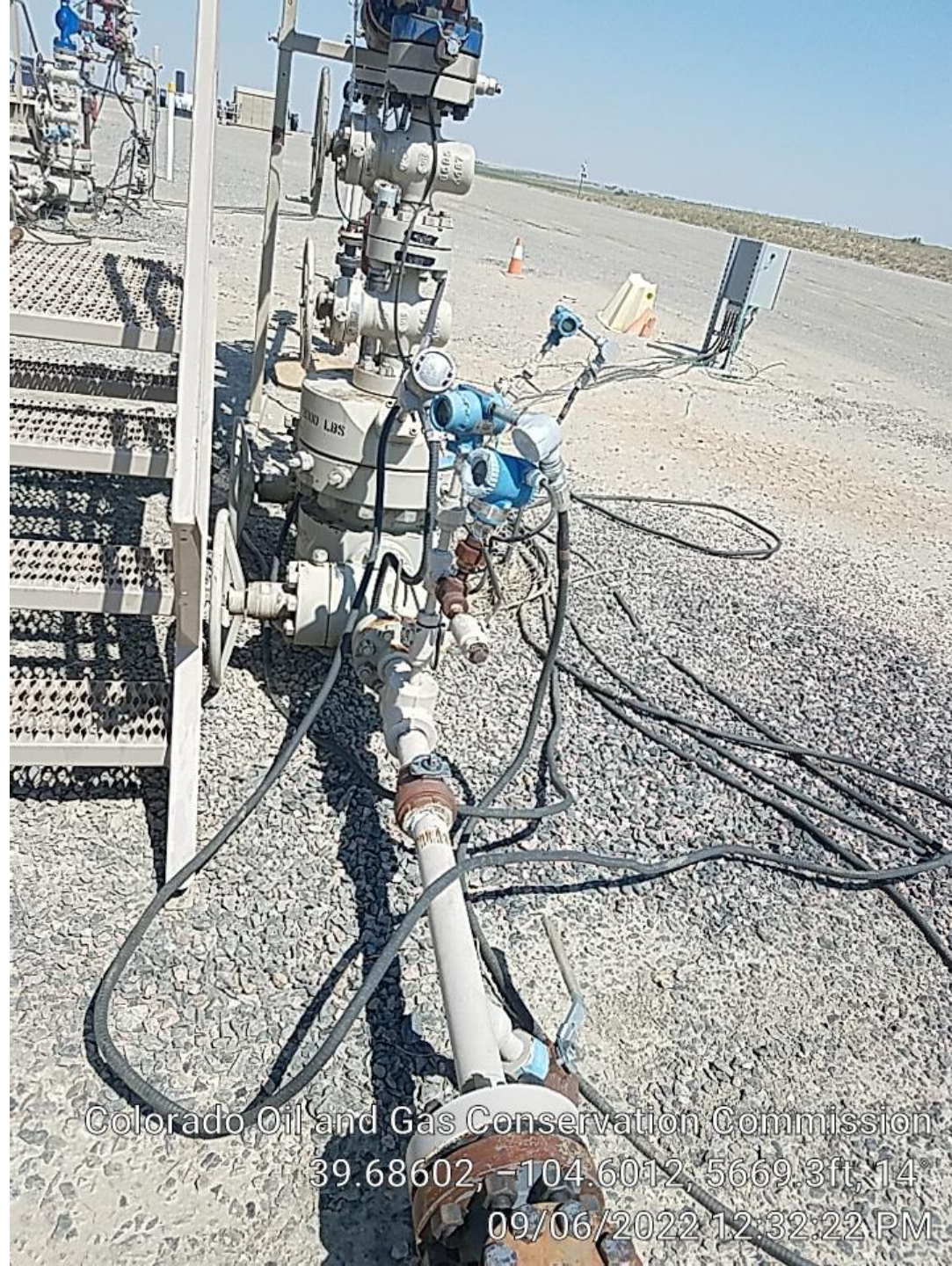


 **CRESTONE PEAK**
RESOURCES

LUSSING TRUST 4-64 19-20 4C3H
NW/SW SEC. 19 TWP: 4S RNG: 64W
ARAPAHOE COUNTY, CO. ELEVATION 5714'
-ACCESS LOCATION FROM WATKINS ROAD

24 H^{RS} CRESTONE PEAK RESOURCES CONTACT: 303-659-7740
LOCAL EMERGENCY SERVICES: 911 NO SMOKING

Colorado Oil and Gas Conservation Commission
39.68604, -104.6012, 5682.4ft, 12°
09/06/2022 12:32:10 PM



Colorado Oil and Gas Conservation Commission
39.68602, -104.6012, 5669.3ft, 14"
09/06/2022 12:32:22 PM



Lussing Trust 4C3H
bradenhead -5 psi.

Colorado Oil and Gas Conservation Commission
39.68604, -104.60118, 5666.0ft, 104°
09/06/2022 12:32:44 PM



CRESTONE PEAK RESOURCES

LUSSING TRUST 4-64 19-20 4D2H
NW/SW SEC. 19 TWP: 4S RNG:64W
ARAPAHOE COUNTY, CO. ELEVATION 5714'
-ACCESS LOCATION FROM WATKINS ROAD

24 HICRESTONE PEAK RESOURCES CONTACT: 303-659-7740
LOCAL EMERGENCY SERVICES: 911 NO SMOKING



Colorado Oil and Gas Conservation Commission
39.68608, -104.60117, 5666.0ft, 356°
09/06/2022 12:33:37 PM



Lussing Trust 4D2H
bradenhead 0 psi.

Colorado Oil and Gas Conservation Commission
39.68613, -104.60117, 5666.0ft, 213°
09/06/2022 12:33:59 PM



CRESTONE PEAK RESOURCES

LUSSING TRUST 4-64 19-20 4C1H

NW/SW SEC. 19 TWP: 4S RNG: 64W

ARAPAHOE COUNTY, CO. ELEVATION 5714'

-ACCESS LOCATION FROM WATKINS ROAD

24 HFCRESTONE PEAK RESOURCES CONTACT: 1-303-659-7740

LOCAL EMERGENCY SERVICES: 911

NO SMOKING

Colorado Oil and Gas Conservation Commission

39.68681, -104.60113, 5669.3ft, 7°

09/06/2022 12:37:30 PM



Colorado Oil and Gas Conservation Commission
39.68682, -104.60113, 5682.4ft, 354°
09/06/2022 12:37:52 PM



Lussing Trust 4C1H
bradenhead 0 psi.

Colorado Oil and Gas Conservation Commission
39.68683, -104.60115, 5675.9ft, 284°
09/06/2022 12:38:09 PM



Wires exposed.

Colorado Oil and Gas Conservation Commission
39.68682, -104.60114, 5679.1ft, 111
09/06/2022 12:37:40 PM



Colorado Oil and Gas Conservation Commission
39.68692, -104.60121, 5662.7ft, 18°
09/06/2022 12:38:32 PM



Colorado Oil and Gas Conservation Commission
39.68687, -104.60118, 5675.9ft, 3°
09/06/2022 12:39:01 PM



Lussing Trust 3D3H
bradenhead 0 psi.

Colorado Oil and Gas Conservation Commission
39.68691, -104.60115, 5675.9ft, 273°
09/06/2022 12:39:23 PM



CRESTONE PEAK RESOURCES

SING TRUST 4-64 19-20 3C2H
SW SEC. 19 TWP: 4S RNG: 64W
PAHOE COUNTY, CO. ELEVATION 5714
CESS LOCATION FROM WATKINS ROAD
Colorado Oil and Gas Conservation Commission
39.68701, -104.60121, 5669.3ft, 358°
CRESTONE PEAK RESOURCES CONTACT: 1-303-859-7740
EMERGENCY SERVICES: 911

09/06/2022 12:39:49 PM



Colorado Oil and Gas Conservation Commission
39.68697, -104.60119 5666.0ft, 352°
09/06/2022 12:40:10 PM



Lussing Trust 3C2H
bradenhead -2 psi.

Colorado Oil and Gas Conservation Commission
39.68702, -104.60118, 5675.9ft, 319
09/06/2022 12:40:35 PM



Colorado Oil and Gas Conservation Commission
39.68703, -104.60118, 5662.7ft, 358°
09/06/2022 12:40:57 PM



Colorado Oil and Gas Conservation Commission
39.68702, -104.60117, 5656.2ft, 351
09/06/2022 12:41:12 PM



Lussing Trust 3D1H
bradenhead -1 psi.

Colorado Oil and Gas Conservation Commission
39.68709, -104.60116, 5659.4ft, 267°
09/06/2022 12:41:46 PM



Compresso
r

Colorado Oil and Gas Conservation Commission
39.68708, -104.60143, 5662.7ft, 205°
09/06/2022 12:42:26 PM



Colorado Oil and Gas Conservation Commission
39.68712, -104.60166, 5675.9ft, 177°
09/06/2022 12:43:10 PM



Check container labels.

Colorado Oil and Gas Conservation Commission
39.68709, -104.60166, 5679.1ft, 151°
09/06/2022 12:43:33 PM



Colorado Oil and Gas Conservation Commission

39.6871, -104.6015, 5672.6ft, 260°

09/06/2022 12:42:40 PM



Colorado Oil and Gas Conservation Commission
39.68707, -104.60181, 5679.1ft, 336°
09/06/2022 12:44:25 PM



Colorado Oil and Gas Conservation Commission
39.68707, -104.60169, 5679.1ft, 216°
09/06/2022 12:43:43 PM



Colorado Oil and Gas Conservation Commission
39.68704, -104.60193, 5666.0ft, 221°
09/06/2022 12:45:06 PM



Colorado Oil and Gas Conservation Commission

39.68692, -104.60203, 5672.6ft, 139°

09/06/2022 12:47:08 PM



Colorado Oil and Gas Conservation Commission
39 68706 -104.60181, 5675.9ft, 193°
09/06/2022 12:44:35 PM



SITE TAG #: BD-4640

PO #: 4521563552

AFE #:

PART #:

MANUFACTURER DATE: 6/2019

METER RUN SIZE: 6

JOB #: 19-3473

CAUTION

GAS MAY BE

Colorado Oil and Gas Conservation Commission

39.68672, -104.60201, 5682.4ft, 50°

PRESENT

09/06/2022 12:47:43 PM

Elite Series

Station # _____

Transmitter /
Static / Span
200

Test Date
9/10/19

Elevation
5714'

Meter Station # 605-05-017

Station Name Crescent

Producer Crestone Peak Resources

Sec 19 Twp 45 Rng 64W County Apache

Diff. Rng 0-250 Stat Rng 0-200 Temp Rng 0-150

Gauge _____

ROC IP Address _____

Radio IP Address _____

Add _____

Group _____

Radio # _____

ACA 2 of 2

Absolute N/A

Tube Size 3.068

Meter Test			Office Plate	
Date	Sample	Technician	Date	Plate Size
9/3/20	NG-F	RCL	9/3/2002	0.625
11/20/20	NG-F	RCL	11/20/2002	0.625
2/9/21	NG-F	RCL	2/9/21/00	0.625
5/14/21	5-21	GH	5/14/21/00	0.625
5/5/21	5-21	GH	5/5/21/00	0.625
11/16/21	11-16-21	GH	11/16/21/00	0.625
4/14/22	4-14-22	LB	4/14/22/00	0.625
6/1/22	6-1-22	LB	6/1/22/00	0.625
8/1/22	8-1-22	LB	8/1/22/00	0.625

Elite Series

Station # _____

Transmitter /
Static / Span
200

Test Date
9/10/19

Elevation
5714'

Meter Station # 605-05-017

Station Name Crescent

Producer Crestone Peak Resources

Sec 19 Twp 45 Rng 64W County Apache

Diff. Rng 0-250 Stat Rng 0-200 Temp Rng 0-150

Gauge _____

ROC IP Address _____

Radio IP Address _____

Add _____

Group _____

Radio # _____

ACA 2 of 2

Meter Test			Office Plate	
Date	Sample	Technician	Date	Plate Size
9/3/20	NG-F	RCL	9/3/2000	0.625
11/20/20	NG-F	RCL	11/20/2000	0.625
2/9/21	NG-F	RCL	2/9/2100	0.625
5/14/21	5-21	GH	5/14/2100	0.625
5/5/21	5-21	GH	5/5/2100	0.625
11/16/21	GH	GH	11/16/2100	0.625
4/14/22	GH	GH	4/14/2200	0.625
6/1/22	GH	GH	6/1/2200	0.625
8/1/22	GH	GH	8/1/2200	0.625

Elite Series

Station # _____

Transmitter /
Static / Span
200

Test Date
9/10/19

Elevation
5714'

Meter Station # 605-05-017

Station Name Crescent

Producer Crestone Peak Resources

Sec 19 Twp 45 Rng 64W County Apache

Diff. Rng 0-250 Stat Rng 0-200 Temp Rng 0-150

Gauge _____

ROC IP Address _____

Radio IP Address _____

Add _____

Group _____

Radio # _____

ACA 2 of 2

Meter Test			Office Plate	
Date	Sample	Technician	Date	Plate Size
9/3/20	NG-F	RCL	9/3/2000	0.625
11/20/20	NG-F	RCL	11/20/2000	0.625
2/9/21	NG-F	RCL	2/9/2100	0.625
5/14/21	5-21	GH	5/14/2100	0.625
5/5/21	5-21	GH	5/5/2100	0.625
11/16/21	GH	GH	11/16/2100	0.625
4/14/22	GH	GH	4/14/2200	0.625
6/1/22	GH	GH	6/1/2200	0.625
8/1/22	GH	GH	8/1/2200	0.625



One VRT,
one VRU.
Nine
tanks.

Colorado Oil and Gas Conservation Commission
39.68693, -104.60204, 5666.0ft, 123
09/06/2022 12:47:15 PM



Colorado Oil and Gas Conservation Commission
39.68668, -104.60182, 5675.9ft, 67°
09/06/2022 12:48:41 PM



Colorado Oil and Gas Conservation Commission

39.68668, -104.60182, 5675.9ft, 140°

09/06/2022 12:48:50 PM



Colorado Oil and Gas Conservation Commission
39.68648, -104.60153, 5679.1ft, 304°
09/06/2022 12:51:23 PM



Per Rule 603i,
bullplugs/caps are
required on loadlines.

Colorado Oil and Gas Conservation Commission
39.68663, -104.60162, 5662.7ft, 217°
09/06/2022 12:55:51 PM



Per Rule 603i,
bullplugs/caps are
required on loadlines.



Colorado Oil and Gas Conservation Commission
39.6865, -104.60161, 5669.3ft, 170
09/06/2022 12:56:08 PM



Check chemical label.

Colorado Oil and Gas Conservation Commission
39.68683, -104.60107, 5675.9ft, 144
09/06/2022 12:36:19 PM



Retention pond.
Unnamed
drainage ~2000'
east of pond.

Colorado Oil and Gas Conservation Commission
39.68725, -104.60057, 5679.1ft, 155
09/06/2022 12:29:49 PM



Colorado Oil and Gas Conservation Commission
39.68666, -104.60085, 5669.3ft, 56
09/06/2022 12:30:25 PM



Top soil pile,

Colorado Oil and Gas Conservation Commission

39.68607, -104.6012, 5675.9ft, 218°

09/06/2022 12:33:11 PM

Top soil
pile.

Colorado Oil and Gas Conservation Commission
39.68607, -104.6012, 5675.9ft, 218°
09/06/2022 12:33:11 PM



Colorado Oil and Gas Conservation Commission
39 68654 -104 60085; 5659 4ft 147
09/06/2022 12:30:41 PM



Colorado Oil and Gas Conservation Commission
39.68725, -104.60206, 5672.6ft, 336°
09/06/2022 12:46:16 PM



Colorado Oil and Gas Conservation Commission

39.68643, -104.60206, 5662.7ft, 194

09/06/2022 12:49:57 PM