



## **FIGURES**

**Figure 1: Initial Assessment Soil Analytical Map**

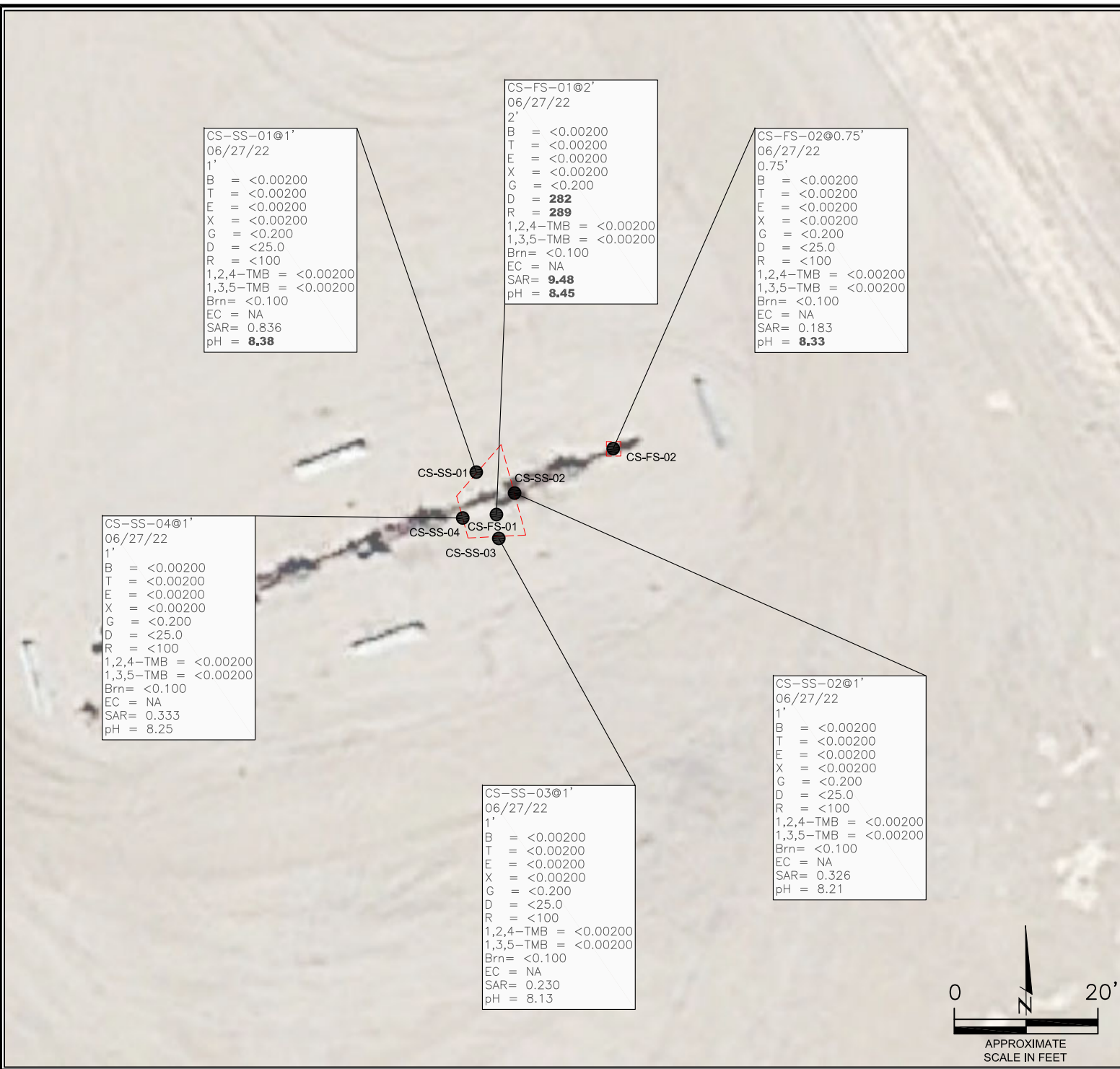
**Figure 2: Initial Assessment Polycyclic Aromatic Hydrocarbons Map**

**Figure 3: Metals in Soil Map – Initial Assessment**

**Figure 4: Confirmation Soil Analytical Map**

**Figure 5: Confirmation Polycyclic Aromatic Hydrocarbons Map**

**Figure 6: Metals in Soil Map – Confirmation Samples**



#### LEGEND

- INITIAL ASSESSMENT BOUNDARIES
- APPROXIMATE LOCATION OF SOIL SAMPLES  
SS-02 SUBMITTED FOR LABORATORY ANALYSIS

#### PARAMETERS

SAMPLE LOCATION  
DATE  
DEPTH (FEET)  
B = BENZENE (mg/kg)  
T = TOLUENE (mg/kg)  
E = ETHYLBENZENE (mg/kg)  
X = TOTAL XYLENES (mg/kg)  
G = TPH-GRO (mg/kg)  
D = TPH-DRO (mg/kg)  
R = TPH-RRO (mg/kg)  
1,2,4-TMB = 1,2,4 TRIMETHYLBENZENE (mg/kg)  
1,3,5-TMB = 1,3,5 TRIMETHYLBENZENE (mg/kg)  
Brn= BORON (mg/L)  
EC = SPECIFIC CONDUCTANCE (mmhos/cm)  
SAR= SODIUM ADSORPTION RATIO  
pH = pH (pH UNITS)

mg/kg = MILLIGRAMS PER KILOGRAM  
mg/L = MILLIGRAMS PER LITER  
mmhos/cm = MILLIMHOS PER CENTIMETER

NA - NOT ANALYZED

TPH-GRO = TOTAL PETROLEUM HYDROCARBONS - GASOLINE  
RANGE ORGANICS  
TPH-DRO = TOTAL PETROLEUM HYDROCARBONS - DIESEL  
RANGE ORGANICS  
TPH-RRO = TOTAL PETROLEUM HYDROCARBONS - RESIDUAL  
RANGE ORGANICS

NOTES:  
VALUES PRESENTED WITH A LESS THAN SYMBOL (<) DID NOT  
CONTAIN CONCENTRATIONS AT OR ABOVE LABORATORY  
DETECTION LIMITS

VALUES PRESENTED IN **BOLD** EXCEED COGCC TABLE 915-1  
REGULATORY LIMITS.

COGCC = COLORADO OIL AND GAS CONSERVATION  
COMMISSION

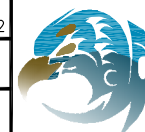
#### INITIAL ASSESSMENT SOIL ANALYTICAL MAP

STATE ANTELOPE 14-21-16XRLNB  
SURFACE RELEASE  
40.379354 / -104.334937  
SW¼ SW¼ SEC.21 T5N R62W 6PM  
WELD COUNTY, COLORADO  
API # 05-123-41370  
REMEDIATION # 23330

DATE:  
09/20/22

DRAWN BY:  
AMN

FIG.  
NO. 1



**EAGLE**  
ENVIRONMENTAL  
CONSULTING, INC.  
8000 W 44th Ave, Wheat Ridge, CO 80033  
Ph: 303-433-0479 • F: 303-325-5449

CS-SS-01@1'  
06/27/22  
1'  
ND = <0.00067  
1-Methylnaphthalene = ND  
2-Methylnaphthalene = ND  
Acenaphthene = ND  
Anthracene = ND  
Benzo(a)anthracene = ND  
Benzo(a)pyrene = ND  
Benzo(b)fluoranthene = ND  
Benzo(k)fluoranthene = ND  
Chrysene = 0.000798  
Dibenzo(a,h)anthracene = ND  
Fluoranthene = ND  
Fluorene = ND  
Indeno(1,2,3-CD)pyrene = ND  
Naphthalene = ND  
Pyrene = ND

CS-FS-01@2'  
06/27/22  
2'  
ND = <0.0067  
1-Methylnaphthalene = 0.00723  
2-Methylnaphthalene = ND  
Acenaphthene = 0.00467  
Anthracene = ND  
Benzo(a)anthracene = ND  
Benzo(a)pyrene = ND  
Benzo(b)fluoranthene = ND  
Benzo(k)fluoranthene = ND  
Chrysene = 0.0495  
Dibenzo(a,h)anthracene = ND  
Fluoranthene = ND  
Fluorene = 0.0299  
Indeno(1,2,3-CD)pyrene = ND  
Naphthalene = <0.00484  
Pyrene = 0.0158

CS-FS-02@0.75'  
06/27/22  
0.75'  
ND = <0.00067  
1-Methylnaphthalene = ND  
2-Methylnaphthalene = ND  
Acenaphthene = ND  
Anthracene = ND  
Benzo(a)anthracene = ND  
Benzo(a)pyrene = ND  
Benzo(b)fluoranthene = ND  
Benzo(k)fluoranthene = ND  
Chrysene = 0.000708  
Dibenzo(a,h)anthracene = ND  
Fluoranthene = ND  
Fluorene = ND  
Indeno(1,2,3-CD)pyrene = ND  
Naphthalene = ND  
Pyrene = ND

CS-SS-04@1'  
06/27/22  
1'  
ND = <0.00067  
1-Methylnaphthalene = ND  
2-Methylnaphthalene = ND  
Acenaphthene = ND  
Anthracene = ND  
Benzo(a)anthracene = ND  
Benzo(a)pyrene = ND  
Benzo(b)fluoranthene = ND  
Benzo(k)fluoranthene = ND  
Chrysene = ND  
Dibenzo(a,h)anthracene = ND  
Fluoranthene = ND  
Fluorene = ND  
Indeno(1,2,3-CD)pyrene = ND  
Naphthalene = ND  
Pyrene = ND

CS-SS-03@1'  
06/27/22  
1'  
ND = <0.00067  
1-Methylnaphthalene = ND  
2-Methylnaphthalene = ND  
Acenaphthene = ND  
Anthracene = ND  
Benzo(a)anthracene = ND  
Benzo(a)pyrene = ND  
Benzo(b)fluoranthene = ND  
Benzo(k)fluoranthene = ND  
Chrysene = ND  
Dibenzo(a,h)anthracene = ND  
Fluoranthene = ND  
Fluorene = ND  
Indeno(1,2,3-CD)pyrene = ND  
Naphthalene = ND  
Pyrene = ND

CS-SS-02@1'  
06/27/22  
1'  
ND = <0.00067  
1-Methylnaphthalene = ND  
2-Methylnaphthalene = ND  
Acenaphthene = ND  
Anthracene = ND  
Benzo(a)anthracene = ND  
Benzo(a)pyrene = ND  
Benzo(b)fluoranthene = ND  
Benzo(k)fluoranthene = ND  
Chrysene = ND  
Dibenzo(a,h)anthracene = ND  
Fluoranthene = ND  
Fluorene = ND  
Indeno(1,2,3-CD)pyrene = ND  
Naphthalene = ND  
Pyrene = ND

## LEGEND

- INITIAL ASSESSMENT BOUNDARIES
- APPROXIMATE LOCATION OF SOIL SAMPLES  
SUBMITTED FOR LABORATORY ANALYSIS

## PARAMETERS

SAMPLE LOCATION  
DATE SAMPLE COLLECTED  
APPROXIMATE DEPTH

POLYCYCLIC AROMATIC HYDROCARBONS (PAHs) (mg/kg)

mg/kg = MILLIGRAMS PER KILOGRAM

ND = NON-DETECT

## NOTES:

VALUES PRESENTED WITH A LESS THAN SYMBOL (<) DID NOT  
CONTAIN CONCENTRATIONS AT OR ABOVE LABORATORY  
DETECTION LIMITS

VALUES PRESENTED IN **BOLD** EXCEED COGCC TABLE 915-1  
REGULATORY LIMITS.

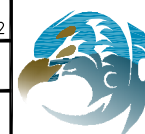
COGCC = COLORADO OIL AND GAS CONSERVATION COMMISSION

INITIAL ASSESSMENT  
POLYCYCLIC AROMATIC HYDROCARBONS MAP  
STATE ANTELOPE 14-21-16XRLNB  
SURFACE RELEASE  
40.379354 / -104.334937  
SW¼ SW¼ SEC.21 T5N R62W 6PM  
WELD COUNTY, COLORADO  
API # 05-123-41370  
REMEDIAL # 23330

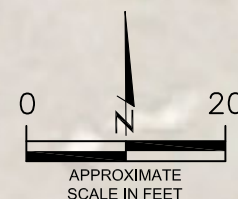
DATE:  
09/20/22

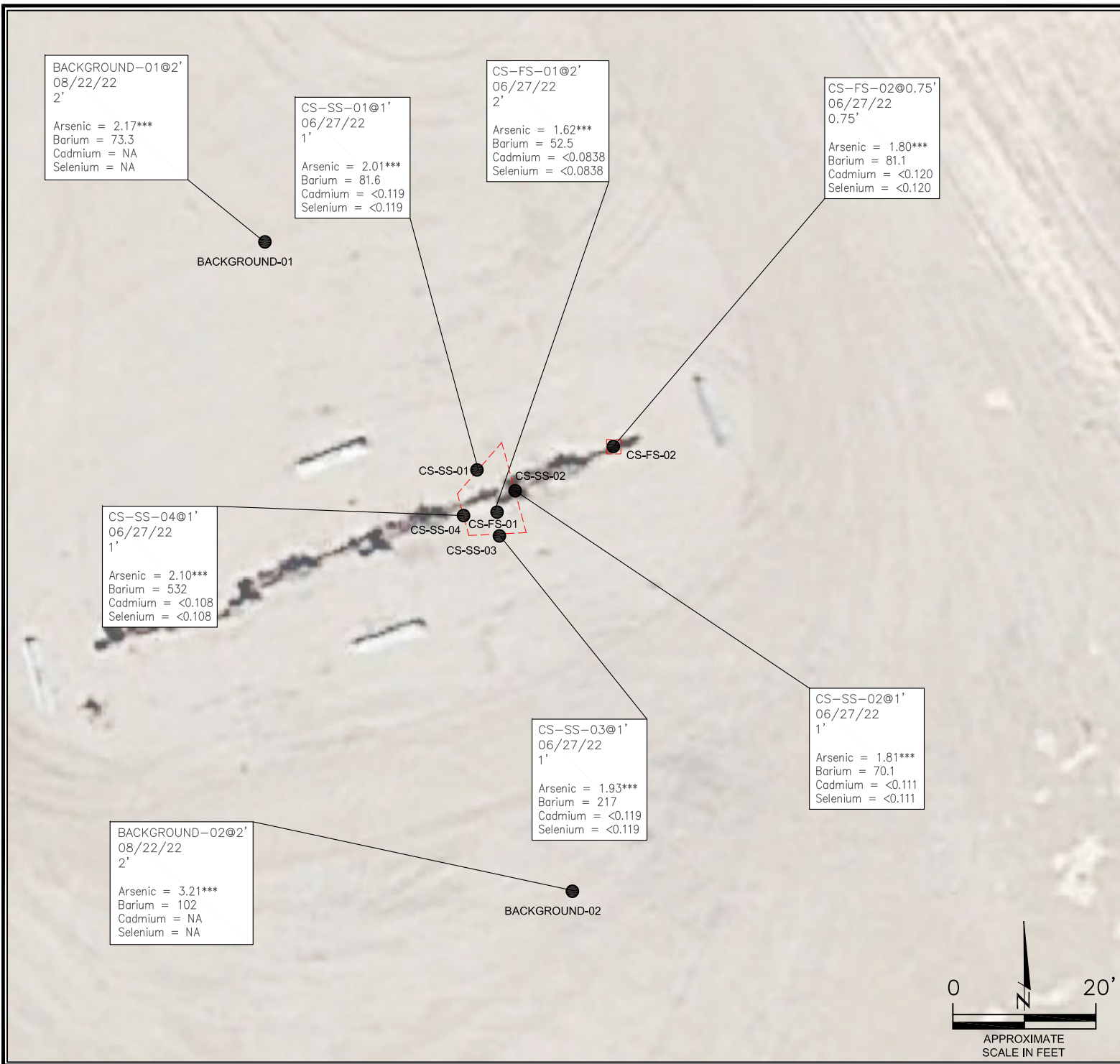
DRAWN BY:  
AMN

FIG.  
NO. 2



**EAGLE**  
ENVIRONMENTAL  
CONSULTING, INC.  
8000 W 44th Ave, Wheat Ridge, CO 80033  
Ph: 303-433-0479 • F: 303-325-5449





**LEGEND**

--- INITIAL ASSESSMENT BOUNDARIES

● APPROXIMATE LOCATION OF SOIL SAMPLES SUBMITTED FOR LABORATORY ANALYSIS

**SS-02**

**PARAMETERS**

**SAMPLE LOCATION**  
DATE SAMPLE COLLECTED  
APPROXIMATE DEPTH  
Arsenic = (mg/kg)  
Barium = (mg/kg)  
Cadmium = (mg/kg)  
Selenium = (mg/kg)

mg/kg = MILLIGRAMS PER KILOGRAM

NA - NOT ANALYZED

**NOTES:**  
VALUES PRESENTED WITH A LESS THAN SYMBOL (<) DID NOT CONTAIN CONCENTRATIONS AT/OR ABOVE LABORATORY REPORTING LIMITS AND/OR MINIMUM DETECTION LIMITS.

VALUES PRESENTED IN **BOLD** VALUES CONTAIN CONCENTRATIONS EXCEEDING COGCC TABLE 915-1 VALUES

**\*\*\*ARSENIC IS NATURALLY OCCURRING IN COLORADO. LOCAL "CLEAN-UP LEVEL" (3.36 mg/kg) is 1.25\*BACKGROUND AVERAGE (2.69 mg/kg).**

COGCC = COLORADO OIL AND GAS CONSERVATION COMMISSION

**METALS IN SOIL MAP - INITIAL ASSESSMENT**  
STATE ANTELOPE 14-21-16XRLNB  
SURFACE RELEASE  
40.379354 / -104.334937  
SW¼ SW¼ SEC.21 T5N R62W 6PM  
WELD COUNTY, COLORADO  
API # 05-123-41370  
REMEDATION # 23330

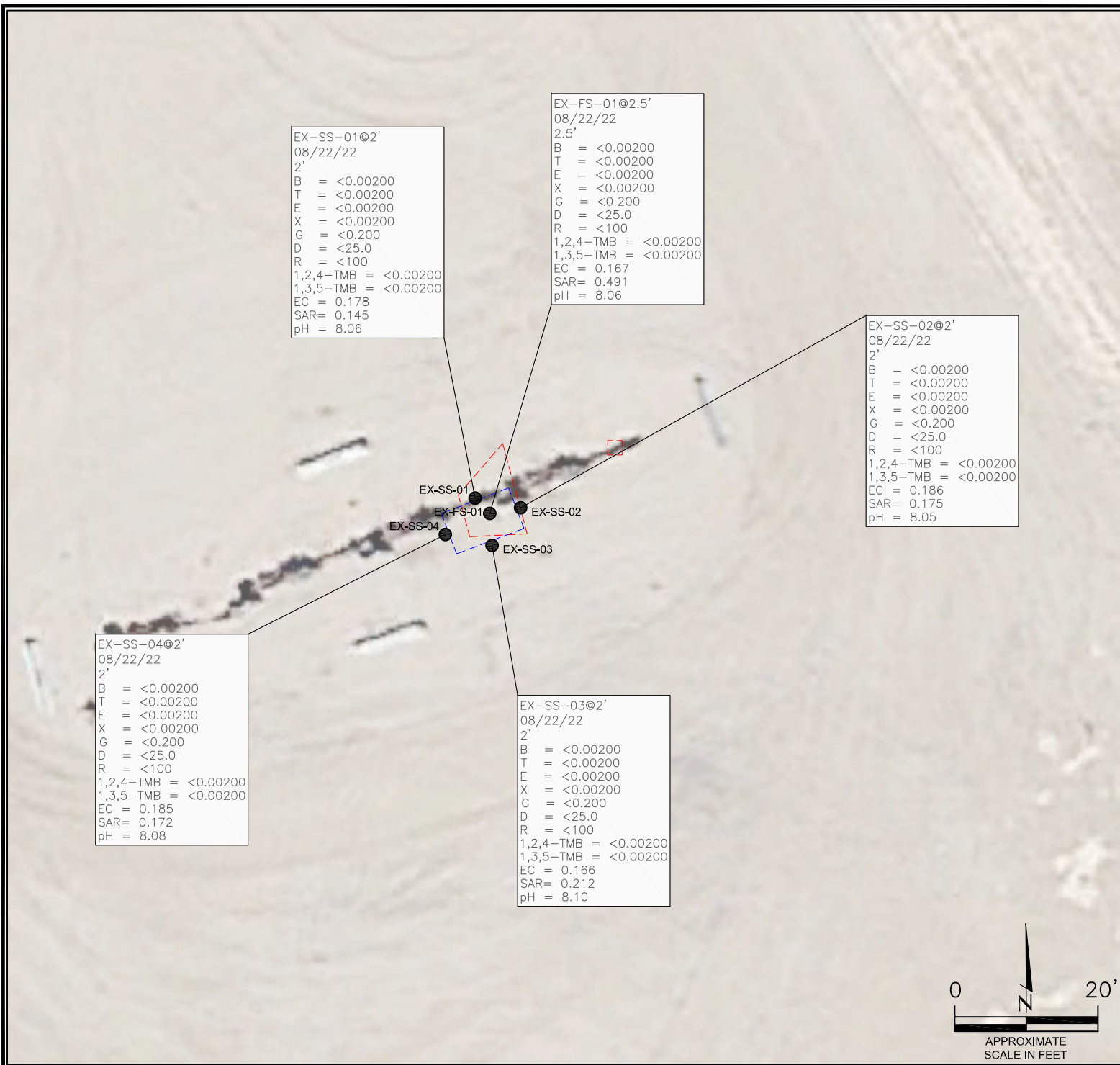
**DATE:**  
09/20/22

**DRAWN BY:**  
AMN

**FIG. NO.**  
3

**EAGLE ENVIRONMENTAL CONSULTING, INC.**  
8000 W 44th Ave, Wheat Ridge, CO 80033  
Ph: 303-433-0479 • F: 303-325-5449





#### LEGEND

- INITIAL ASSESSMENT BOUNDARIES
- APPROXIMATE OVER-EXCAVATION BOUNDARIES
- APPROXIMATE LOCATION OF SOIL SAMPLES SUBMITTED FOR LABORATORY ANALYSIS

#### PARAMETERS

SAMPLE LOCATION  
DATE  
DEPTH (FEET)  
B = BENZENE (mg/kg)  
T = TOLUENE (mg/kg)  
E = ETHYLBENZENE (mg/kg)  
X = TOTAL XYLENES (mg/kg)  
G = TPH-GRO (mg/kg)  
D = TPH-DRO (mg/kg)  
R = TPH-RRO (mg/kg)  
1,2,4-TMB = 1,2,4 TRIMETHYLBENZENE (mg/kg)  
1,3,5-TMB = 1,3,5 TRIMETHYLBENZENE (mg/kg)  
EC = SPECIFIC CONDUCTANCE (mmhos/cm)  
SAR= SODIUM ADSORPTION RATIO  
pH = pH (pH UNITS)

mg/kg = MILLIGRAMS PER KILOGRAM  
mmhos/cm = MILLIMHOS PER CENTIMETER

TPH-GRO = TOTAL PETROLEUM HYDROCARBONS - GASOLINE RANGE ORGANICS  
TPH-DRO = TOTAL PETROLEUM HYDROCARBONS - DIESEL RANGE ORGANICS  
TPH-RRO = TOTAL PETROLEUM HYDROCARBONS - RESIDUAL RANGE ORGANICS

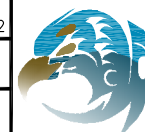
NOTES:  
VALUES PRESENTED WITH A LESS THAN SYMBOL (<) DID NOT CONTAIN CONCENTRATIONS AT OR ABOVE LABORATORY DETECTION LIMITS

VALUES PRESENTED IN **BOLD** EXCEED COGCC TABLE 915-1 REGULATORY LIMITS.

COGCC = COLORADO OIL AND GAS CONSERVATION COMMISSION

CONFIRMATION SOIL ANALYTICAL MAP  
STATE ANTELOPE 14-21-16XRLNB  
SURFACE RELEASE  
40.379354 / -104.334937  
SW¼ SW¼ SEC.21 T5N R62W 6PM  
WELD COUNTY, COLORADO  
API # 05-123-41370  
REMEDATION # 23330

DATE:  
09/20/22  
DRAWN BY:  
AMN  
FIG.  
NO. 4



**EAGLE**  
ENVIRONMENTAL  
CONSULTING, INC.  
8000 W 44th Ave, Wheat Ridge, CO 80033  
Ph: 303-433-0479 • F: 303-325-5449

EX-SS-01@2'  
08/22/22

2'  
ND = <0.00067  
1-Methylnaphthalene = ND  
2-Methylnaphthalene = ND  
Acenaphthene = ND  
Anthracene = ND  
Benzo(a)anthracene = ND  
Benzo(a)pyrene = ND  
Benzo(b)fluoranthene = ND  
Benzo(k)fluoranthene = ND  
Chrysene = ND  
Dibenzo(a,h)anthracene = ND  
Fluoranthene = ND  
Fluorene = ND  
Indeno(1,2,3-CD)pyrene = ND  
Naphthalene = ND  
Pyrene = ND

EX-FS-01@2.5'  
08/22/22

2.5'  
ND = <0.00067  
1-Methylnaphthalene = ND  
2-Methylnaphthalene = ND  
Acenaphthene = ND  
Anthracene = ND  
Benzo(a)anthracene = ND  
Benzo(a)pyrene = 0.000628  
Benzo(b)fluoranthene = 0.000661  
Benzo(k)fluoranthene = 0.000513  
Chrysene = 0.00137  
Dibenzo(a,h)anthracene = ND  
Fluoranthene = 0.000625  
Fluorene = ND  
Indeno(1,2,3-CD)pyrene = ND  
Naphthalene = ND  
Pyrene = 0.000756

EX-SS-04@2'  
08/22/22

2'  
ND = <0.00067  
1-Methylnaphthalene = ND  
2-Methylnaphthalene = ND  
Acenaphthene = ND  
Anthracene = ND  
Benzo(a)anthracene = ND  
Benzo(a)pyrene = ND  
Benzo(b)fluoranthene = ND  
Benzo(k)fluoranthene = ND  
Chrysene = 0.00131  
Dibenzo(a,h)anthracene = ND  
Fluoranthene = ND  
Fluorene = ND  
Indeno(1,2,3-CD)pyrene = ND  
Naphthalene = ND  
Pyrene = ND

EX-SS-01  
EX-FS-01  
EX-SS-02  
EX-SS-04  
EX-SS-03

EX-SS-03@2'  
08/22/22

2'  
ND = <0.00067  
1-Methylnaphthalene = ND  
2-Methylnaphthalene = ND  
Acenaphthene = ND  
Anthracene = ND  
Benzo(a)anthracene = ND  
Benzo(a)pyrene = ND  
Benzo(b)fluoranthene = ND  
Benzo(k)fluoranthene = ND  
Chrysene = ND  
Dibenzo(a,h)anthracene = ND  
Fluoranthene = ND  
Fluorene = ND  
Indeno(1,2,3-CD)pyrene = ND  
Naphthalene = ND  
Pyrene = ND

EX-SS-02@2'  
08/22/22

2'  
ND = <0.00067  
1-Methylnaphthalene = ND  
2-Methylnaphthalene = ND  
Acenaphthene = ND  
Anthracene = ND  
Benzo(a)anthracene = ND  
Benzo(a)pyrene = ND  
Benzo(b)fluoranthene = ND  
Benzo(k)fluoranthene = ND  
Chrysene = ND  
Dibenzo(a,h)anthracene = ND  
Fluoranthene = ND  
Fluorene = ND  
Indeno(1,2,3-CD)pyrene = ND  
Naphthalene = ND  
Pyrene = ND

#### LEGEND

- INITIAL ASSESSMENT BOUNDARIES
- APPROXIMATE OVER-EXCAVATION BOUNDARIES
- APPROXIMATE LOCATION OF SOIL SAMPLES SUBMITTED FOR LABORATORY ANALYSIS

#### PARAMETERS

SAMPLE LOCATION  
DATE SAMPLE COLLECTED  
APPROXIMATE DEPTH

POLYCYCLIC AROMATIC HYDROCARBONS (PAHs) (mg/kg)

mg/kg = MILLIGRAMS PER KILOGRAM

ND = NON-DETECT

#### NOTES:

VALUES PRESENTED WITH A LESS THAN SYMBOL (<) DID NOT CONTAIN CONCENTRATIONS AT OR ABOVE LABORATORY DETECTION LIMITS

VALUES PRESENTED IN **BOLD** EXCEED COGCC TABLE 915-1 REGULATORY LIMITS.

COGCC = COLORADO OIL AND GAS CONSERVATION COMMISSION

#### CONFIRMATION POLYCYCLIC AROMATIC HYDROCARBONS MAP

STATE ANTELOPE 14-21-16XRLNB  
SURFACE RELEASE  
40.379354 / -104.334937  
SW¼ SW¼ SEC.21 T5N R62W 6PM  
WELD COUNTY, COLORADO  
API # 05-123-41370  
REMEDIAL # 23330

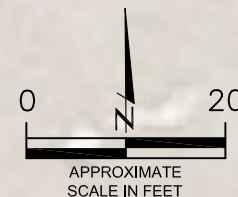
DATE:  
09/20/22

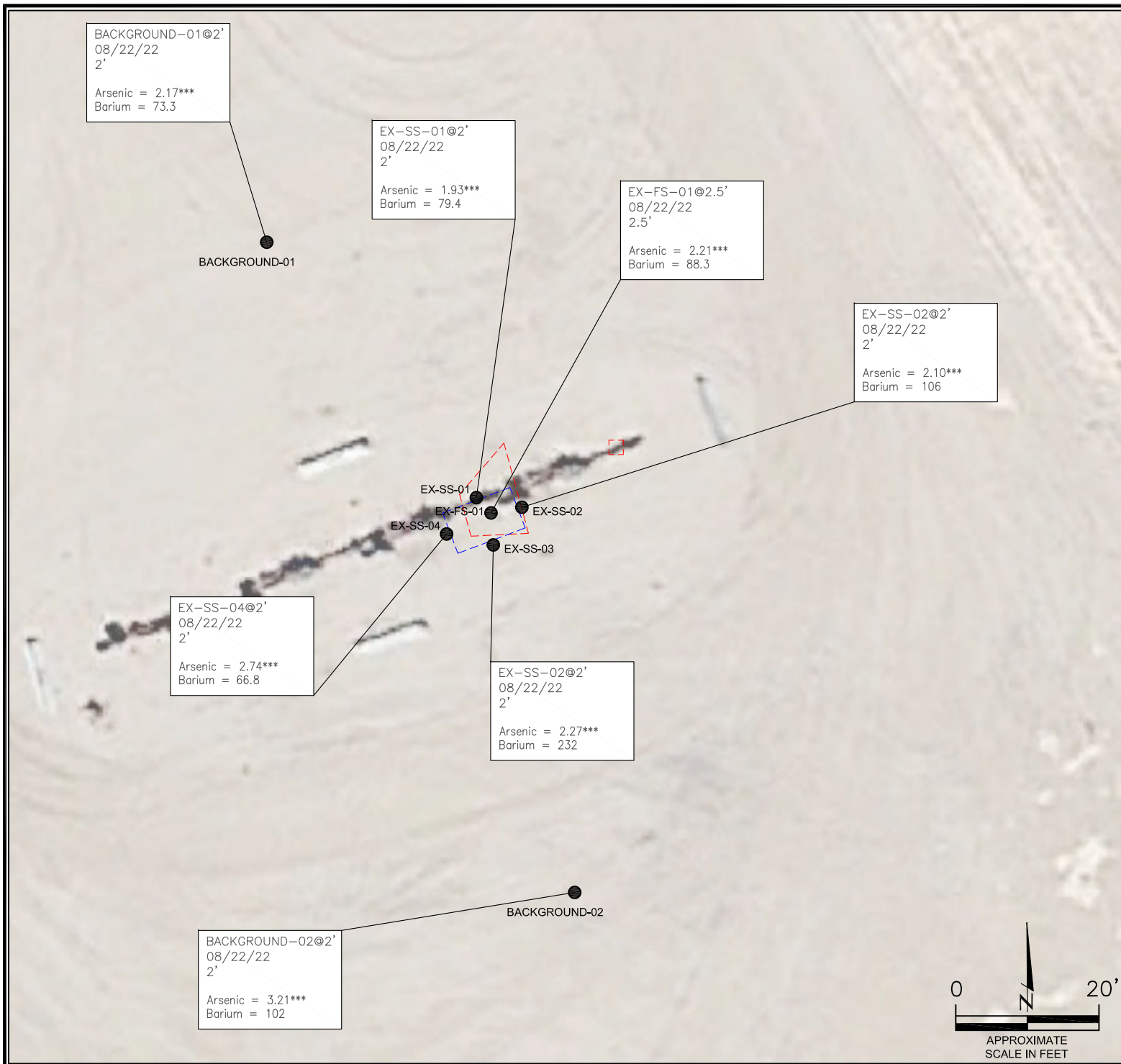
DRAWN BY:  
AMN

FIG.  
NO. 5



**EAGLE**  
ENVIRONMENTAL  
CONSULTING, INC.  
8000 W 44th Ave, Wheat Ridge, CO 80033  
Ph: 303-433-0479 • F: 303-325-5449





#### LEGEND

- INITIAL ASSESSMENT BOUNDARIES
- APPROXIMATE OVER-EXCAVATION BOUNDARIES
- APPROXIMATE LOCATION OF SOIL SAMPLES SUBMITTED FOR LABORATORY ANALYSIS

#### PARAMETERS

SAMPLE LOCATION  
DATE SAMPLE COLLECTED  
APPROXIMATE DEPTH  
Arsenic = (mg/kg)  
Barium = (mg/kg)

mg/kg = MILLIGRAMS PER KILOGRAM

#### NOTES:

VALUES PRESENTED WITH A LESS THAN SYMBOL (<) DID NOT CONTAIN CONCENTRATIONS AT/OR ABOVE LABORATORY REPORTING LIMITS AND/OR MINIMUM DETECTION LIMITS.

VALUES PRESENTED IN **BOLD** EXCEED COGCC TABLE 915-1 REGULATORY LIMITS.

\*\*\*ARSENIC IS NATURALLY OCCURRING IN COLORADO. LOCAL "CLEAN-UP LEVEL" (3.36 mg/kg) is 1.25\*BACKGROUND AVERAGE (2.69 mg/kg).

COGCC = COLORADO OIL AND GAS CONSERVATION COMMISSION

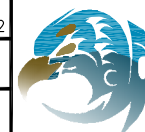
#### METALS IN SOIL MAP - CONFIRMATION SAMPLES

STATE ANTELOPE 14-21-16XRLNB  
SURFACE RELEASE  
40.379354 / -104.334937  
SW¼ SW¼ SEC.21 T5N R62W 6PM  
WELD COUNTY, COLORADO  
API # 05-123-41370  
REMEDATION # 23330

DATE:  
09/20/22

DRAWN BY:  
AMN

FIG.  
NO. 6



**EAGLE**  
ENVIRONMENTAL  
CONSULTING, INC.  
8000 W 44th Ave, Wheat Ridge, CO 80033  
Ph: 303-433-0479 • F: 303-325-5449



## **TABLES**

**Table 1: Photoionization Detector Reading Summary**

**Table 2: Soil Analytical Results Summary**

**Table 3: Polycyclic Aromatic Hydrocarbons Results Summary**

**Table 4: Metals Analytical Results Summary**



TABLE 1  
 PHOTOIONIZATION DETECTOR READING SUMMARY  
 STATE ANTELOPE #14-21-16XRLNB  
 SURFACE RELEASE  
 40.379354 / -104.334937  
 SW1/4 SW1/4 SEC.21 T5N R62W 6PM  
 WELD COUNTY, COLORADO  
 API # 05-123-41370  
 REMEDIATION # 23330

Sample Location (Latitude/Longitude)	Date	Approximate Depth (feet)	PID Reading (ppm-v)	Lab Submission (Y/N)
CS-SS-01 @ 1' (40.379384279 / -104.334946097)	06/27/22	1	3.8	Y
CS-SS-02 @ 1' (40.379372188 / -104.334919597)	06/27/22	1	6.3	Y
CS-SS-03 @ 1' (40.379348134 / -104.334935137)	06/27/22	1	6.4	Y
CS-SS-04 @ 1' (40.379348839 / -104.334960261)	06/27/22	1	5.2	Y
CS-FS-01 @ 2' (40.379367865 / -104.334938059)	06/27/22	2	4.3	Y
CS-FS-02 @ 0.75' (40.37938715 / -104.334857893)	06/27/22	0.75	4.8	Y
EX-SS-01 @ 2' (40.379379149 / -104.334943909)	08/22/22	2	1.3	Y
EX-SS-02 @ 2' (40.379372515 / -104.334917937)	08/22/22	2	0.9	Y
EX-SS-03 @ 2' (40.379349445 / -104.334938226)	08/22/22	2	1.2	Y
EX-SS-04 @ 2' (40.379349472 / -104.334965133)	08/22/22	2	1.6	Y
EX-FS-01 @ 2.5' (40.379367865 / -104.334938059)	08/22/22	3	0.7	Y
Background-01 @ 2' (40.37954806 / -104.335005559)	08/22/22	2	0.9	Y
Background-02 @ 2' (40.379178417 / -104.334923264)	08/22/22	2	0.6	Y
(Y/N) = Yes or No ppm-v = parts per million by volume PID = photoionization detector				

TABLE 3  
SOIL ANALYTICAL RESULTS SUMMARY  
STATE ANTELOPE #14-21-16XRLNB  
SURFACE RELEASE  
40.379354 / -104.334937  
SW1/4 SW1/4 SEC.21 T5N R62W 6PM  
WELD COUNTY, COLORADO  
API # 05-123-41370  
REMEDIAION # 23330

Sample Location (Latitude/Longitude)	Date	Approximate Depth (feet)	PID Reading (ppm-v)	Benzene (mg/kg)	Toluene (mg/kg)	Ethylbenzene (mg/kg)	Total Xylenes (mg/kg)	TPH-GRO (mg/kg)	TPH-DRO (mg/kg)	TPH-RRO (mg/kg)	1,2,4- Trimethylbenzene (mg/kg)	1,3,5- Trimethylbenzene (mg/kg)	Boron (mg/L)	Specific Conductance (mmhos/cm)	pH (pH units)	SAR
<b>COGCC Table 915-1 Residential Screening Levels</b>				<b>1.2</b>	<b>490</b>	<b>5.8</b>	<b>58</b>	<b>500</b>			<b>30</b>	<b>27</b>	<b>2</b>	<b>&lt;4</b>	<b>6-8.3</b>	<b>&lt;6</b>
CS-SS-01 @ 1' (40.379384279 / -104.334946097)	06/27/22	1	3.8	<0.00200	<0.00200	<0.00200	<0.00200	<0.200	<25.0	<100	<0.00200	<0.00200	<0.100	NA	<b>8.38</b>	0.836
CS-SS-02 @ 1' (40.379372188 / -104.334919597)	06/27/22	1	6.3	<0.00200	<0.00200	<0.00200	<0.00200	<0.200	<25.0	<100	<0.00200	<0.00200	<0.100	NA	8.21	0.326
CS-SS-03 @ 1' (40.379348134 / -104.334935137)	06/27/22	1	6.4	<0.00200	<0.00200	<0.00200	<0.00200	<0.200	<25.0	<100	<0.00200	<0.00200	<0.100	NA	8.13	0.230
CS-SS-04 @ 1' (40.379348839 / -104.334960261)	06/27/22	1	5.2	<0.00200	<0.00200	<0.00200	<0.00200	<0.200	<25.0	<100	<0.00200	<0.00200	<0.100	NA	8.25	0.333
CS-FS-01 @ 2' (40.379367865 / -104.334938059)	06/27/22	2	4.3	<0.00200	<0.00200	<0.00200	<0.00200	<0.200	<b>282</b>	<b>289</b>	<0.00200	<0.00200	<0.100	NA	<b>8.45</b>	<b>9.48</b>
CS-FS-02 @ 0.75' (40.37938715 / -104.334857893)	06/27/22	0.75	4.8	<0.00200	<0.00200	<0.00200	<0.00200	<0.200	<25.0	<100	<0.00200	<0.00200	<0.100	NA	<b>8.33</b>	0.183
EX-SS-01 @ 2' (40.379379149 / -104.334943909)	08/22/22	2	1.3	<0.00200	<0.00200	<0.00200	<0.00200	<0.200	<25.0	<100	<0.00200	<0.00200	NA	0.178	8.06	0.145
EX-SS-02 @ 2' (40.379372515 / -104.334917937)	08/22/22	2	0.9	<0.00200	<0.00200	<0.00200	<0.00200	<0.200	<25.0	<100	<0.00200	<0.00200	NA	0.186	8.05	0.175
EX-SS-03 @ 2' (40.379349445 / -104.334938226)	08/22/22	2	1.2	<0.00200	<0.00200	<0.00200	<0.00200	<0.200	<25.0	<100	<0.00200	<0.00200	NA	0.166	8.10	0.212
EX-SS-04 @ 2' (40.379349472 / -104.334965133)	08/22/22	2	1.6	<0.00200	<0.00200	<0.00200	<0.00200	<0.200	<25.0	<100	<0.00200	<0.00200	NA	0.185	8.08	0.172
EX-FS-01 @ 2.5' (40.379367865 / -104.334938059)	08/22/22	3	0.7	<0.00200	<0.00200	<0.00200	<0.00200	<0.200	<25.0	<100	<0.00200	<0.00200	NA	0.167	8.06	0.491
Background-01 @ 2' (40.37954806 / -104.335005559)	08/22/22	2	0.9	NA	NA	NA	NA	NA	NA	NA	NA	NA	NA	NA	8.16	0.434
Background-02 @ 2' (40.379178417 / -104.334923264)	08/22/22	2	0.6	NA	NA	NA	NA	NA	NA	NA	NA	NA	NA	NA	8.19	0.501

COGCC = Colorado Oil and Gas Conservation Commission

mg/kg = milligrams per kilogram

mmhos/cm = millimhos per centimeter

SAR = Sodium Adsorption Ratio

PID = Photoionization detector

ppm-v = parts per million by volume

Notes: Values presented with a less than symbol (<) did not contain concentrations at or above the laboratory reporting limit.

Values presented in **BOLD** contained concentrations exceeding applicable COGCC Table 915-1 Regulatory Limits

TPH-GRO = Total Petroleum Hydrocarbons - Gasoline Range Organics

TPH-DRO = Total Petroleum Hydrocarbons - Diesel Range Organics

TPH-RRO = Total Petroleum Hydrocarbons - Residual Range Organics

NA - Not Analyzed

TABLE 4  
PAHS ANALYTICAL RESULTS SUMMARY  
STATE ANTELOPE #14-21-16XRLNB  
SURFACE RELEASE  
40.379354 / -104.334937  
SW1/4 SW1/4 SEC.21 T5N R62W 6PM  
WELD COUNTY, COLORADO  
API # 05-123-41370  
REMEDATION # 23330

Sample Location (Latitude/Longitude)	Date	Approximate Depth (feet)	PID Reading (ppm-v)	1-Methyl- naphthalene (mg/kg)	2-Methyl- naphthalene (mg/kg)	Acenaphthene (mg/kg)	Anthracene (mg/kg)	Benzo(a)-anthracene (mg/kg)	Benzo(a)- pyrene (mg/kg)	Benzo(b)- fluoranthene (mg/kg)	Benzo(k)- fluoranthene (mg/kg)	Chrysene (mg/kg)	Dibenzo(a,h)- anthracene (mg/kg)	Fluoranthene (mg/kg)	Fluorene (mg/kg)	Iideno(1,2,3- cd)-pyrene (mg/kg)	Naphthalene (mg/kg)	Pyrene (mg/kg)
<b>COGCC Table 915-1 Residential Screening Levels</b>				<b>18</b>	<b>24</b>	<b>360</b>	<b>1,800</b>	<b>1.1</b>	<b>0.11</b>	<b>1.1</b>	<b>11</b>	<b>110</b>	<b>0.11</b>	<b>240</b>	<b>240</b>	<b>1.1</b>	<b>2</b>	<b>180</b>
CS-SS-01 @ 1' (40.379384279 / -104.334946097)	06/27/22	1	3.8	<0.00067	<0.00067	<0.00067	<0.00067	<0.00067	<0.00067	<0.00067	<0.00067	0.000798	<0.00067	<0.00067	<0.00067	<0.00067	<0.00067	<0.00067
CS-SS-02 @ 1' (40.379372188 / -104.334919597)	06/27/22	1	6.3	<0.00067	<0.00067	<0.00067	<0.00067	<0.00067	<0.00067	<0.00067	<0.00067	<0.00067	<0.00067	<0.00067	<0.00067	<0.00067	<0.00067	<0.00067
CS-SS-03 @ 1' (40.379348134 / -104.334935137)	06/27/22	1	6.4	<0.00067	<0.00067	<0.00067	<0.00067	<0.00067	<0.00067	<0.00067	<0.00067	<0.00067	<0.00067	<0.00067	<0.00067	<0.00067	<0.00067	<0.00067
CS-SS-04 @ 1' (40.379348839 / -104.334960261)	06/27/22	1	5.2	<0.00067	<0.00067	<0.00067	<0.00067	<0.00067	<0.00067	<0.00067	<0.00067	0.00204	<0.00067	<0.00067	<0.00067	<0.00067	<0.00067	<0.00067
CS-FS-01 @ 2' (40.379367865 / -104.334938059)	06/27/22	2	4.3	0.00723	<0.0067	0.00467	<0.0067	<0.0067	<0.0067	<0.0067	<0.0067	0.0495	<0.0067	<0.0067	0.0299	<0.0067	<0.00484	0.0158
CS-FS-02 @ 0.75' (40.37938715 / -104.334857893)	06/27/22	0.75	4.8	<0.00067	<0.00067	<0.00067	<0.00067	<0.00067	<0.00067	<0.00067	<0.00067	<0.00067	0.000708	<0.00067	<0.00067	<0.00067	<0.00067	<0.00067
EX-SS-01 @ 2' (40.379379149 / -104.334943909)	08/22/22	2	1.3	<0.00067	<0.00067	<0.00067	<0.00067	<0.00067	<0.00067	<0.00067	<0.00067	<0.00067	<0.00067	<0.00067	<0.00067	<0.00067	<0.00067	<0.00067
EX-SS-02 @ 2' (40.379372515 / -104.334917937)	08/22/22	2	0.9	<0.00067	<0.00067	<0.00067	<0.00067	<0.00067	<0.00067	<0.00067	<0.00067	<0.00067	<0.00067	<0.00067	<0.00067	<0.00067	<0.00067	<0.00067
EX-SS-03 @ 2' (40.379349445 / -104.334938226)	08/22/22	2	1.2	<0.00067	<0.00067	<0.00067	<0.00067	<0.00067	<0.00067	<0.00067	<0.00067	<0.00067	<0.00067	<0.00067	<0.00067	<0.00067	<0.00067	<0.00067
EX-SS-04 @ 2' (40.379349472 / -104.334965133)	08/22/22	2	1.6	<0.00067	<0.00067	<0.00067	<0.00067	<0.00067	<0.00067	<0.00067	<0.00067	0.00131	<0.00067	<0.00067	<0.00067	<0.00067	<0.00067	<0.00067
EX-FS-01 @ 2.5' (40.379367865 / -104.334938059)	08/22/22	3	0.7	<0.00067	<0.00067	<0.00067	<0.00067	<0.00067	0.000628	0.000661	0.000513	0.00137	<0.00067	0.000625	<0.00067	<0.00067	<0.00067	0.000756
COGCC = Colorado Oil and Gas Conservation Commission mg/kg = milligrams per kilogram				PID = Photoionization detector ppm-v = parts per million by volume														
Notes: Values presented with a less than symbol (<) did not contain concentrations at or above the laboratory reporting limit. Values presented in <b>BOLD</b> contained concentrations exceeding applicable COGCC Table 915-1 Regulatory Limits																		

TABLE 4  
METALS ANALYTICAL RESULTS SUMMARY  
STATE ANTELOPE #14-21-16XRLNB  
SURFACE RELEASE  
40.379354 / -104.334937  
SW1/4 SW1/4 SEC.21 T5N R62W 6PM  
WELD COUNTY, COLORADO  
API # 05-123-41370  
REMEDATION # 23330

Sample Location (Latitude/Longitude)	Date	Approximate Depth (feet)	Arsenic (mg/kg)	Barium (mg/kg)	Cadmium (mg/kg)	Selenium (mg/kg)
<b>COGCC Table 915-1 Residential Screening Levels</b>			<b>0.68***</b>	<b>15,000</b>	<b>71</b>	<b>390</b>
<b>Local Cleanup Levels</b>			<b>3.36***</b>	<b>--</b>	<b>--</b>	<b>--</b>
CS-SS-01 @ 1' (40.379384279 / -104.334946097)	06/27/22	1	2.01***	81.6	<0.119	<0.119
CS-SS-02 @ 1' (40.379372188 / -104.334919597)	06/27/22	1	1.81***	70.1	<0.111	<0.111
CS-SS-03 @ 1' (40.379348134 / -104.334935137)	06/27/22	1	1.93***	217	<0.119	<0.119
CS-SS-04 @ 1' (40.379348839 / -104.334960261)	06/27/22	1	2.10***	532	<0.108	<0.108
CS-FS-01 @ 2' (40.379367865 / -104.334938059)	06/27/22	2	1.62***	52.5	<0.0838	<0.0838
CS-FS-02 @ 0.75' (40.37938715 / -104.334857893)	06/27/22	0.75	1.80***	81.1	<0.120	<0.120
EX-SS-01 @ 2' (40.379379149 / -104.334943909)	2	1.3	1.93***	79.4	NA	NA
EX-SS-02 @ 2' (40.379372515 / -104.334917937)	2	0.9	2.10***	106	NA	NA
EX-SS-03 @ 2' (40.379349445 / -104.334938226)	2	1.2	2.27***	232	NA	NA
EX-SS-04 @ 2' (40.379349472 / -104.334965133)	2	1.6	2.74***	66.8	NA	NA
EX-FS-01 @ 2.5' (40.379367865 / -104.334938059)	3	0.7	2.21***	88.3	NA	NA
Background-01 @ 2' (40.37954806 / -104.335005559)	08/22/22	2	2.17***	73.3	NA	NA
Background-02 @ 2' (40.379178417 / -104.334923264)	08/22/22	2	3.21***	102	NA	NA
COGCC = Colorado Oil and Gas Conservation Commission mg/kg = milligrams per kilogram Notes: Values presented with a less than symbol (<) did not contain concentrations at or above the laboratory reporting limit or minimum detection levels.  Values presented in <b>BOLD</b> contained concentrations exceeding applicable COGCC Table 915-1 Regulatory Limits  ***Arsenic is naturally occurring in Colorado. Local clean-up (3.36 mg/kg) is 1.25 *Average Background (2.69 mg/kg).						



## **ATTACHMENT A**

### **Photolog**



# State Antelope #14-21-16XRLNB

## API # 05-123-41370

## Remediation # 23330

Release Assessment

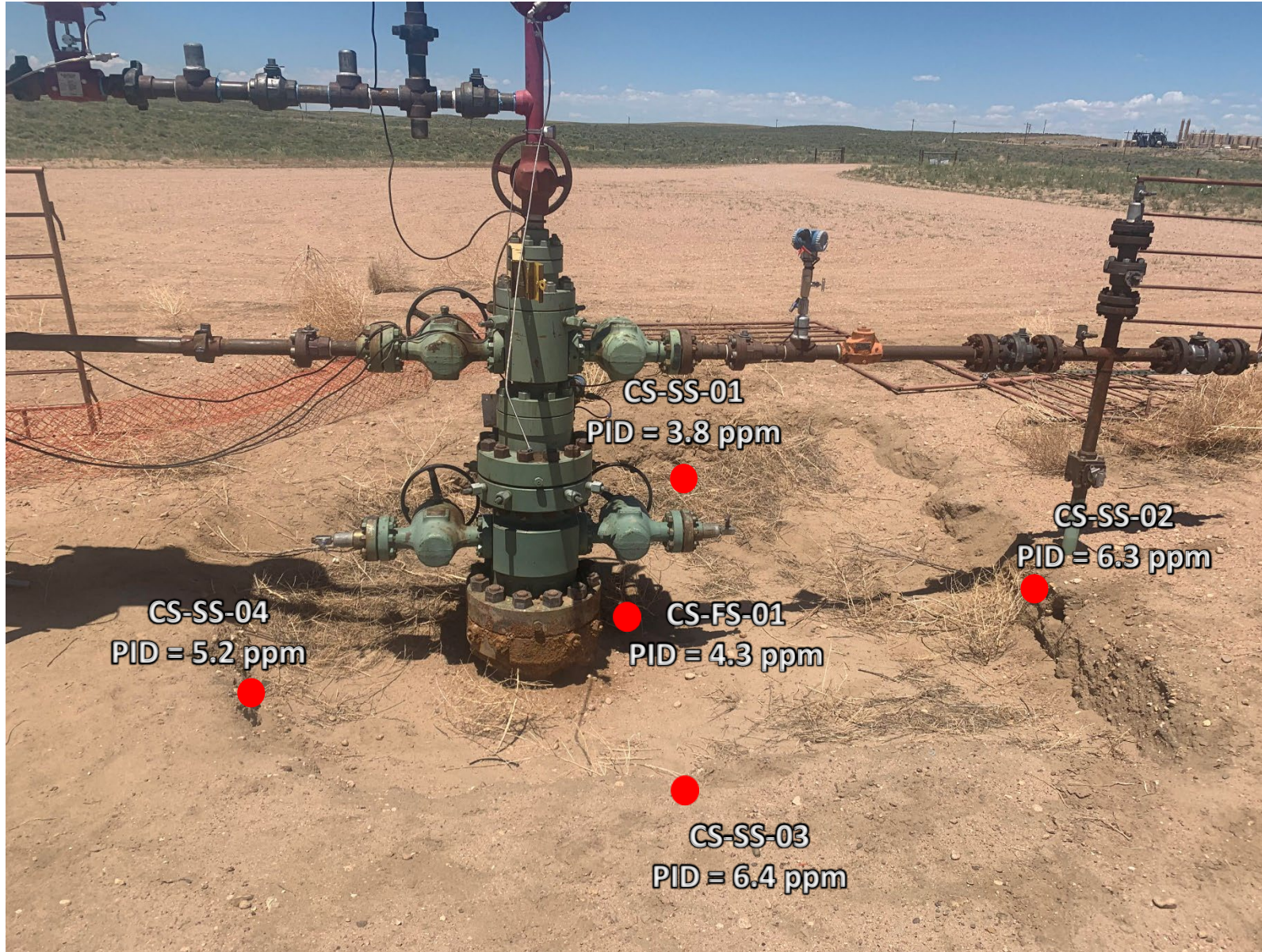
June-August 2022



**EAGLE**  
ENVIRONMENTAL  
CONSULTING, INC.  
8000 W 44th Ave, Wheat Ridge, CO 80033  
Ph: 303-433-0479 • F: 303-325-5449



## Release Assessment/Confirmation Sampling – 06/27/22



Looking north at excavation

No petroleum hydrocarbon staining or odor observed



## Release Assessment/Confirmation Sampling – 06/27/22

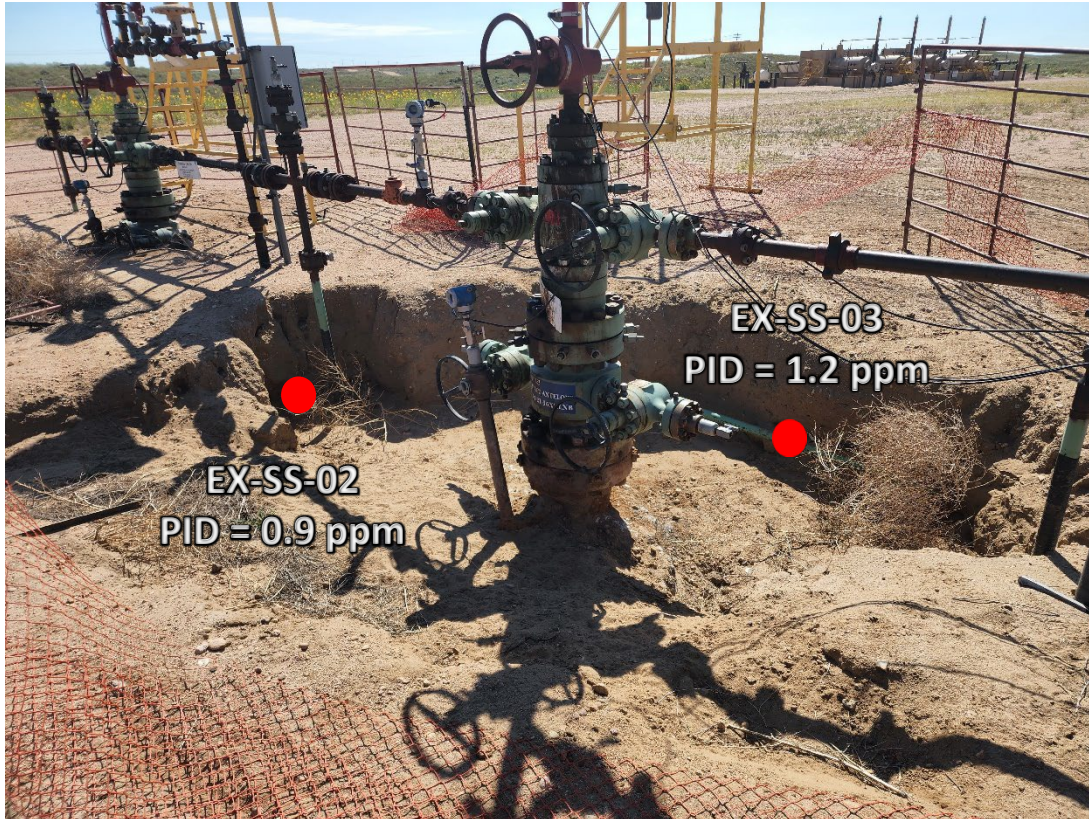


Looking east

No petroleum hydrocarbon staining or odor observed

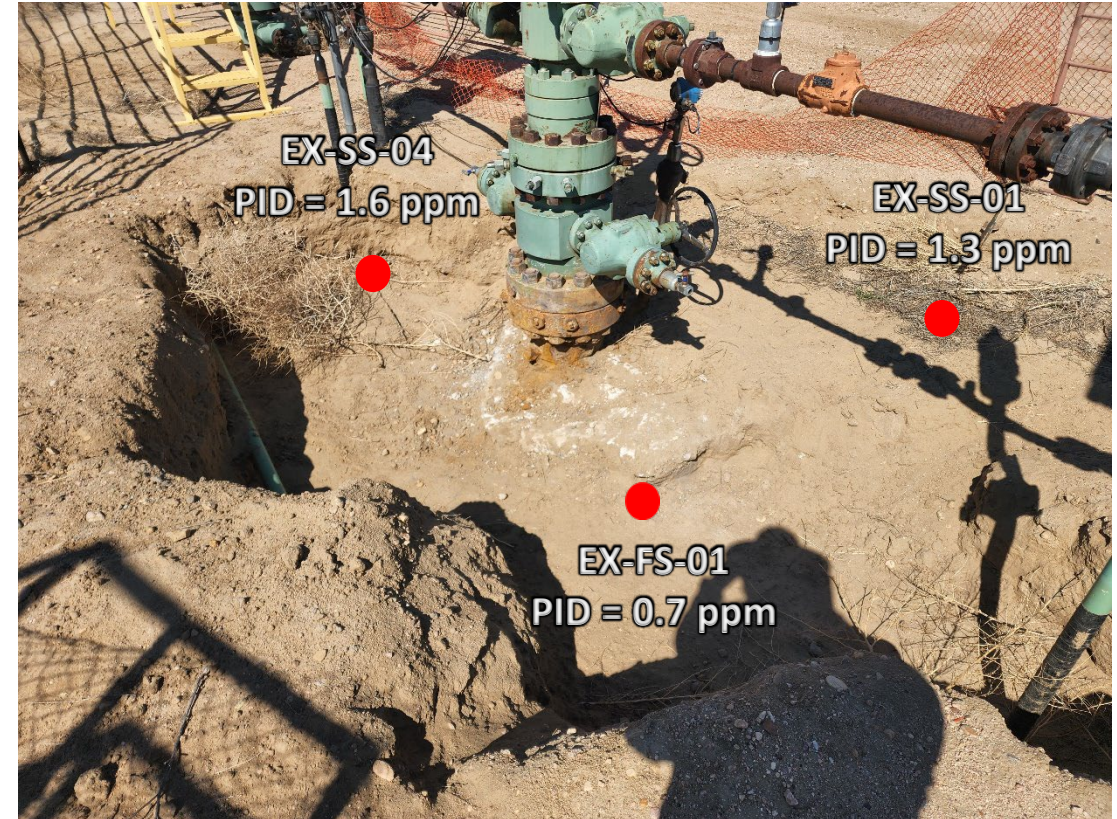


## Over-excavation/Confirmation Sampling – 08/22/22



Looking southeast

No petroleum hydrocarbon staining or odor observed



Looking northwest

No petroleum hydrocarbon staining or odor observed





## **ATTACHMENT B**

### **Laboratory Analytical Reports**





July 13, 2022

Eagle Environmental Consulting, Inc.

Martin C Eckert III

8000 W 44th Ave

Wheat Ridge CO 80033

Project Name - State Antelope 14-21-16XRLNB

Project Number - [none]

Attached are your analytical results for State Antelope 14-21-16XRLNB received by Origins Laboratory, Inc. June 27, 2022. This project is associated with Origins project number Y206676-01.

The analytical results in the following report were analyzed under the guidelines of EPA Methods. These methods are identified as follows; "SW" are defined in SW-846, "EPA" are defined in 40CFR part 136 and "SM" are defined in the most current revision of Standard Methods For the Examination of Water and Wastewater.

The analytical results apply specifically to the samples and analyses specified per the attached Chain of Custody. As such, this report shall not be reproduced except in full, without the written approval of Origin's laboratory.

Unless otherwise noted, the analytical results for all soil samples are reported on a wet weight basis. All analytical analyses were performed under NELAP guidelines unless noted by a data qualifier.

Any holding time exceedances, deviations from the method specifications or deviations from Origins Laboratory's Standard Operating Procedures are outlined in the case narrative.

Thank you for selecting Origins for your analytical needs. Please contact us with any questions concerning this report, or if we can help with anything at all.

Origins Laboratory, Inc.  
303.433.1322  
o-squad@oelabinc.com



1725 Elk Place, Denver, CO 80211 | Phone: 303.433.1322 | Fax: 303.265.9645

Eagle Environmental Consulting, Inc.

8000 W 44th Ave

Wheat Ridge CO 80033

Martin C Eckert III

Project Number: [none]

Project: State Antelope 14-21-16XRLNB

## CROSS REFERENCE REPORT

Sample ID	Laboratory ID	Matrix	Date Sampled	Date Received
CS-SS-01@1'	Y206676-01	Soil	June 27, 2022 13:45	06/27/2022 17:10
CS-SS-02@1'	Y206676-02	Soil	June 27, 2022 13:47	06/27/2022 17:10
CS-SS-03@1'	Y206676-03	Soil	June 27, 2022 13:49	06/27/2022 17:10
CS-SS-04@1'	Y206676-04	Soil	June 27, 2022 13:51	06/27/2022 17:10
CS-FS-01@2'	Y206676-05	Soil	June 27, 2022 13:53	06/27/2022 17:10
CS-FS-02@0.75'	Y206676-06	Soil	June 27, 2022 13:55	06/27/2022 17:10

Origins Laboratory, Inc.



*The results in this report apply to the samples analyzed in accordance with the chain of custody document. This analytical report must be reproduced in its entirety.*

Martin C Eckert III  
Project Number: [none]  
Project: State Antelope 14-21-16XRLNB

**ORIGINS**  
**LABORATORY, INC**  
 www.originslaboratory.com  
 Y206676  
 page 1 of 1  
 Client: Engle Environmental Consulting  
 Address: 8000 W 4th Ave  
Wheat Ridge CO, 80033  
 Telephone Number: 303-433-0479  
 Email Address: me@engle-enviro.com  
 Project Manager: Nathan Eckert III  
 Project Name: State Antelope 14-21-XRLNB  
 Project Number: -  
 Samples Collected By: BRW

[illegible]

*A. C. Williams*

Date Results Needed

Temp Received. 4:70

★ Bill to look

Origins Laboratory, Inc.

Byron

*The results in this report apply to the samples analyzed in accordance with the chain of custody document. This analytical report must be reproduced in its entirety.*

Eagle Environmental Consulting, Inc.  
8000 W 44th Ave  
Wheat Ridge CO 80033

Martin C Eckert III  
Project Number: [none]  
Project: State Antelope 14-21-16XRLNB

Origins Laboratory

F-012207-01-R1  
Effective Date: 01/09/12

**Sample Receipt Checklist**

Origins Work Order: Y206676

Client: Eagle

Client Project ID: State Antelope 14-21-16

Checklist Completed by: MC

Date/time completed: 6/28/12

Shipped Via: HD  
(UPS, FedEx, Hand Delivered, Pick-up, etc.)

Airbill #: NA

Matrix(s) Received: (Check all that apply): 1 Soil/Solid        Water        Other:       

Cooler Number/Temperature: 1 4.7 °C        °C        °C (Describe)        °C

Thermometer ID: J004

Requirement Description	Yes	No	N/A	Comments (if any)
If samples require cooling, was the temperature between 0°C to ≤ 6°C <sup>(1)</sup> ?	<u>1</u>			
Is there ice present (document if blue ice is used)	<u>1</u>			
Are custody seals present on cooler? (if so, document in comments if they are signed and dated, broken or intact)		<u>1</u>		
Are custody seals present on each sample container? (if so, document in comments if they are signed and dated, broken or intact)		<u>1</u>		
Were all samples received intact <sup>(1)</sup> ?	<u>1</u>			
Was adequate sample volume provided <sup>(1)</sup> ?	<u>1</u>			
Are short holding time analytes or samples with HTs due within 48 hours present <sup>(1)</sup> ?		<u>1</u>		
Is a chain-of-custody (COC) present and filled out completely <sup>(1)</sup> ?	<u>1</u>			
Does the COC agree with the number and type of sample bottles received <sup>(1)</sup> ?	<u>1</u>			
Do the sample IDs on the bottle labels match the COC <sup>(1)</sup> ?	<u>1</u>			
Is the COC properly relinquished by the client with date and time recorded <sup>(1)</sup> ?	<u>1</u>			
For volatiles in water – is there headspace (> ¼ inch bubble) present? If yes, contact client and note in narrative.			<u>1</u>	
Are samples preserved that require preservation and was it checked <sup>(1)</sup> ? (note ID of confirmation instrument used in comments) / (preservation is not confirmed for subcontracted analyses in order to insure sample integrity)/(pH < 2 for samples preserved with HNO <sub>3</sub> , HCL, H <sub>2</sub> SO <sub>4</sub> ) / (pH > 10 for samples preserved with NaAsO <sub>2</sub> +NaOH, ZnAc+NaOH)			<u>1</u>	
Additional Comments (if any):				

<sup>(1)</sup> If NO, then contact the client before proceeding with analysis and note date/time and person contacted as well as the corrective action to in the additional comments (above) and the case narrative.

Reviewed by (Project Manager) OP Date/Time Reviewed 6/29/12

Origins Laboratory, Inc.

*J. Bynon*

The results in this report apply to the samples analyzed in accordance with the chain of custody document. This analytical report must be reproduced in its entirety.

Eagle Environmental Consulting, Inc.  
8000 W 44th Ave  
Wheat Ridge CO 80033

Martin C Eckert III  
Project Number: [none]  
Project: State Antelope 14-21-16XRLNB

CS-SS-01@1'  
6/27/2022 1:45:00PM

Analyte	Result	Min Detection Limit	Reporting Limit	Units	Dilution	Batch	Prepared	Analyzed	Notes
---------	--------	---------------------	-----------------	-------	----------	-------	----------	----------	-------

Origins Laboratory, Inc.  
Y206676-01 (Soil)

## Boron (DTPA Sorbitol)

Boron	ND	0.100	mg/L	1	B2F2817	06/28/2022	06/29/2022	
-------	----	-------	------	---	---------	------------	------------	--

## DRO/ORO by EPA 8015D

Diesel (C10-C28)	ND	25.0	mg/kg	1	B2F2916	06/29/2022	07/07/2022	U
Residual Range Organics (C28-C40)	ND	100	"	"	"	"	"	U

Surrogate: o-Terphenyl	72.7 %	50-150	"	"	"	"	"	"
------------------------	--------	--------	---	---	---	---	---	---

## GBTEX+TMBs by 8260D

1,2,4-Trimethylbenzene	ND	0.00200	mg/kg	1	B2F2834	06/28/2022	06/29/2022	U
1,3,5-Trimethylbenzene	ND	0.00200	"	"	"	"	"	U
Benzene	ND	0.00200	"	"	"	"	"	U
Ethylbenzene	ND	0.00200	"	"	"	"	"	U
Toluene	ND	0.00200	"	"	"	"	"	U
Xylenes, total	ND	0.00200	"	"	"	"	"	U
Gasoline Range Hydrocarbons	ND	0.200	"	"	"	"	"	U

Surrogate: 1,2-Dichloroethane-d4	96.0 %	70-130	"	"	"	"	"	"
----------------------------------	--------	--------	---	---	---	---	---	---

Origins Laboratory, Inc.



The results in this report apply to the samples analyzed in accordance with the chain of custody document. This analytical report must be reproduced in its entirety.



Eagle Environmental Consulting, Inc.  
8000 W 44th Ave  
Wheat Ridge CO 80033

Martin C Eckert III  
Project Number: [none]  
Project: State Antelope 14-21-16XRLNB

CS-SS-01@1'

6/27/2022 1:45:00PM

Analyte	Result	Min Detection Limit	Reporting Limit	Units	Dilution	Batch	Prepared	Analyzed	Notes
---------	--------	---------------------	-----------------	-------	----------	-------	----------	----------	-------

Origins Laboratory, Inc.  
Y206676-01 (Soil)

## GBTEX+TMBs by 8260D

Surrogate: Toluene-d8	91.6 %	70-130	B2F28 34	06/28/2022	06/29/2022
Surrogate: 4-Bromofluorobenzene	104 %	70-130	"	"	"

## Metals by Saturated Paste by EPA 6010

Calcium	2.43	0.499	meq/L	10	[CALC]	06/28/2022	06/29/2022
Magnesium	ND	0.823	"	"	"	"	"
Sodium	1.06	0.435	"	"	"	"	"

## PAH by 8270D SIM

1-Methylnaphthalene	ND	0.000364	0.00067	mg/Kg	1	L624860	07/05/2022	07/05/2022
2-Methylnaphthalene	ND	0.000645	0.00067	"	"	"	"	"
Acenaphthene	ND	0.000304	0.00067	"	"	"	"	"
Anthracene	ND	0.000334	0.00067	"	"	"	"	"
Benzo(a)anthracene	ND	0.000493	0.00067	"	"	"	"	"
Benzo(a)pyrene	ND	0.000468	0.00067	"	"	"	"	"
Benzo(b)fluoranthene	ND	0.000585	0.00067	"	"	"	"	"
Benzo(k)fluoranthene	ND	0.000437	0.00067	"	"	"	"	"
Chrysene	0.000798	0.000624	0.00067	"	"	"	"	"
Dibenz(a,h)anthracene	ND	0.000614	0.00067	"	"	"	"	"
Fluoranthene	ND	0.000394	0.00067	"	"	"	"	"

Origins Laboratory, Inc.



The results in this report apply to the samples analyzed in accordance with the chain of custody document. This analytical report must be reproduced in its entirety.

Eagle Environmental Consulting, Inc.  
8000 W 44th Ave  
Wheat Ridge CO 80033

Martin C Eckert III  
Project Number: [none]  
Project: State Antelope 14-21-16XRLNB

CS-SS-01@1'

6/27/2022 1:45:00PM

Analyte	Result	Min Detection Limit	Reporting Limit	Units	Dilution	Batch	Prepared	Analyzed	Notes
---------	--------	---------------------	-----------------	-------	----------	-------	----------	----------	-------

Waypoint Analytical, Inc.  
Y206676-01 (Soil)

## PAH by 8270D SIM

Fluorene	ND	0.000286	0.00067	mg/Kg	1	L624860	07/05/2022	07/05/2022	
Indeno(1,2,3-cd)pyrene	ND	0.000627	0.00067	"	"	"	"	"	
Naphthalene	ND	0.000484	0.00067	"	"	"	"	"	
Pyrene	ND	0.000643	0.00067	"	"	"	"	"	

Surrogate: 2-Fluorobiphenyl	29.9 %		33-115			"	"	"	*
Surrogate: 4-Terphenyl-d14	34.5 %		33-122			"	"	"	
Surrogate: Nitrobenzene-d5	37.8 %		29-110			"	"	"	

## pH in Soil by 9045D

pH	8.38			pH Units	1	B2F2820	06/28/2022	06/29/2022	
----	------	--	--	----------	---	---------	------------	------------	--

## SAR by 20B Saturated Paste

SAR	0.836			SAR	1	B2F2818	06/28/2022	06/29/2022	
-----	-------	--	--	-----	---	---------	------------	------------	--

## Table 915 metals by EPA 6020B

Arsenic	2.01	0.119	mg/kg	1	B2F2822	06/28/2022	06/28/2022		
Barium	81.6	11.9	"	"	"	"	"	"	
Cadmium	ND	0.119	"	"	"	"	"	"	U
Selenium	ND	0.119	"	"	"	"	"	"	U

Origins Laboratory, Inc.



The results in this report apply to the samples analyzed in accordance with the chain of custody document. This analytical report must be reproduced in its entirety.

Eagle Environmental Consulting, Inc.  
8000 W 44th Ave  
Wheat Ridge CO 80033

Martin C Eckert III  
Project Number: [none]  
Project: State Antelope 14-21-16XRLNB

CS-SS-02@1'  
6/27/2022 1:47:00PM

Analyte	Result	Min Detection Limit	Reporting Limit	Units	Dilution	Batch	Prepared	Analyzed	Notes
---------	--------	---------------------	-----------------	-------	----------	-------	----------	----------	-------

**Origins Laboratory, Inc.**  
**Y206676-02 (Soil)**

**Boron (DTPA Sorbitol)**

Boron	ND	0.100	mg/L	1	B2F2817	06/28/2022	06/29/2022	
-------	----	-------	------	---	---------	------------	------------	--

**DRO/ORO by EPA 8015D**

Diesel (C10-C28)	ND	25.0	mg/kg	1	B2F2916	06/29/2022	07/07/2022	U
Residual Range Organics (C28-C40)	ND	100	"	"	"	"	"	U

Surrogate: o-Terphenyl	72.2 %	50-150			"	"	"	
------------------------	--------	--------	--	--	---	---	---	--

**GBTEX+TMBs by 8260D**

1,2,4-Trimethylbenzene	ND	0.00200	mg/kg	1	B2F2834	06/28/2022	06/29/2022	U
1,3,5-Trimethylbenzene	ND	0.00200	"	"	"	"	"	U
Benzene	ND	0.00200	"	"	"	"	"	U
Ethylbenzene	ND	0.00200	"	"	"	"	"	U
Toluene	ND	0.00200	"	"	"	"	"	U
Xylenes, total	ND	0.00200	"	"	"	"	"	U
Gasoline Range Hydrocarbons	ND	0.200	"	"	"	"	"	U

Surrogate: 1,2-Dichloroethane-d4	96.9 %	70-130			"	"	"	
----------------------------------	--------	--------	--	--	---	---	---	--

Origins Laboratory, Inc.



The results in this report apply to the samples analyzed in accordance with the chain of custody document. This analytical report must be reproduced in its entirety.

Eagle Environmental Consulting, Inc.  
8000 W 44th Ave  
Wheat Ridge CO 80033

Martin C Eckert III  
Project Number: [none]  
Project: State Antelope 14-21-16XRLNB

CS-SS-02@1'

6/27/2022 1:47:00PM

Analyte	Result	Min Detection Limit	Reporting Limit	Units	Dilution	Batch	Prepared	Analyzed	Notes
---------	--------	---------------------	-----------------	-------	----------	-------	----------	----------	-------

Origins Laboratory, Inc.  
Y206676-02 (Soil)

## GBTEX+TMBs by 8260D

Surrogate: Toluene-d8	91.9 %	70-130	B2F28 34	06/28/2022	06/29/2022
Surrogate: 4-Bromofluorobenzene	103 %	70-130	"	"	"

## Metals by Saturated Paste by EPA 6010

Calcium	1.28	0.499	meq/L	10	[CALC]	06/28/2022	06/29/2022
Magnesium	ND	0.823	"	"	"	"	"
Sodium	ND	0.435	"	"	"	"	"

## PAH by 8270D SIM

1-Methylnaphthalene	ND	0.000364	0.00067	mg/Kg	1	L624860	07/05/2022	07/05/2022
2-Methylnaphthalene	ND	0.000645	0.00067	"	"	"	"	"
Acenaphthene	ND	0.000304	0.00067	"	"	"	"	"
Anthracene	ND	0.000334	0.00067	"	"	"	"	"
Benzo(a)anthracene	ND	0.000493	0.00067	"	"	"	"	"
Benzo(a)pyrene	ND	0.000468	0.00067	"	"	"	"	"
Benzo(b)fluoranthene	ND	0.000585	0.00067	"	"	"	"	"
Benzo(k)fluoranthene	ND	0.000437	0.00067	"	"	"	"	"
Chrysene	ND	0.000624	0.00067	"	"	"	"	"
Dibenz(a,h)anthracene	ND	0.000614	0.00067	"	"	"	"	"
Fluoranthene	ND	0.000394	0.00067	"	"	"	"	"

Origins Laboratory, Inc.



The results in this report apply to the samples analyzed in accordance with the chain of custody document. This analytical report must be reproduced in its entirety.

Eagle Environmental Consulting, Inc.  
8000 W 44th Ave  
Wheat Ridge CO 80033

Martin C Eckert III  
Project Number: [none]  
Project: State Antelope 14-21-16XRLNB

CS-SS-02@1'

6/27/2022 1:47:00PM

Analyte	Result	Min Detection Limit	Reporting Limit	Units	Dilution	Batch	Prepared	Analyzed	Notes
---------	--------	---------------------	-----------------	-------	----------	-------	----------	----------	-------

Waypoint Analytical, Inc.  
Y206676-02 (Soil)

## PAH by 8270D SIM

Fluorene	ND	0.000286	0.00067	mg/Kg	1	L624860	07/05/2022	07/05/2022
Indeno(1,2,3-cd)pyrene	ND	0.000627	0.00067	"	"	"	"	"
Naphthalene	ND	0.000484	0.00067	"	"	"	"	"
Pyrene	ND	0.000643	0.00067	"	"	"	"	"

Surrogate: 2-Fluorobiphenyl	54.5 %	33-115	"	"	"
Surrogate: 4-Terphenyl-d14	63.3 %	33-122	"	"	"
Surrogate: Nitrobenzene-d5	67.3 %	29-110	"	"	"

## pH in Soil by 9045D

pH	8.21	pH Units	1	B2F2820	06/28/2022	06/29/2022
----	------	----------	---	---------	------------	------------

## SAR by 20B Saturated Paste

SAR	0.326	SAR	1	B2F2818	06/28/2022	06/29/2022
-----	-------	-----	---	---------	------------	------------

## Table 915 metals by EPA 6020B

Arsenic	1.81	0.111	mg/kg	1	B2F2822	06/28/2022	06/28/2022
Barium	70.1	11.1	"	"	"	"	"
Cadmium	ND	0.111	"	"	"	"	U
Selenium	ND	0.111	"	"	"	"	U

Origins Laboratory, Inc.



The results in this report apply to the samples analyzed in accordance with the chain of custody document. This analytical report must be reproduced in its entirety.



Eagle Environmental Consulting, Inc.  
8000 W 44th Ave  
Wheat Ridge CO 80033

Martin C Eckert III  
Project Number: [none]  
Project: State Antelope 14-21-16XRLNB

CS-SS-03@1'

6/27/2022 1:49:00PM

Analyte	Result	Min Detection Limit	Reporting Limit	Units	Dilution	Batch	Prepared	Analyzed	Notes
---------	--------	---------------------	-----------------	-------	----------	-------	----------	----------	-------

**Origins Laboratory, Inc.**  
**Y206676-03 (Soil)**

**Boron (DTPA Sorbitol)**

Boron	ND	0.100	mg/L	1	B2F2817	06/28/2022	06/29/2022	
-------	----	-------	------	---	---------	------------	------------	--

**DRO/ORO by EPA 8015D**

Diesel (C10-C28)	ND	25.0	mg/kg	1	B2F2916	06/29/2022	07/07/2022	U
Residual Range Organics (C28-C40)	ND	100	"	"	"	"	"	U

Surrogate: o-Terphenyl	68.0 %	50-150			"	"	"	
------------------------	--------	--------	--	--	---	---	---	--

**GBTEX+TMBs by 8260D**

1,2,4-Trimethylbenzene	ND	0.00200	mg/kg	1	B2F2834	06/28/2022	06/29/2022	U
1,3,5-Trimethylbenzene	ND	0.00200	"	"	"	"	"	U
Benzene	ND	0.00200	"	"	"	"	"	U
Ethylbenzene	ND	0.00200	"	"	"	"	"	U
Toluene	ND	0.00200	"	"	"	"	"	U
Xylenes, total	ND	0.00200	"	"	"	"	"	U
Gasoline Range Hydrocarbons	ND	0.200	"	"	"	"	"	U

Surrogate: 1,2-Dichloroethane-d4	97.8 %	70-130			"	"	"	
----------------------------------	--------	--------	--	--	---	---	---	--

Origins Laboratory, Inc.



The results in this report apply to the samples analyzed in accordance with the chain of custody document. This analytical report must be reproduced in its entirety.

Eagle Environmental Consulting, Inc.  
8000 W 44th Ave  
Wheat Ridge CO 80033

Martin C Eckert III  
Project Number: [none]  
Project: State Antelope 14-21-16XRLNB

CS-SS-03@1'

6/27/2022 1:49:00PM

Analyte	Result	Min Detection Limit	Reporting Limit	Units	Dilution	Batch	Prepared	Analyzed	Notes
---------	--------	---------------------	-----------------	-------	----------	-------	----------	----------	-------

Origins Laboratory, Inc.  
Y206676-03 (Soil)

## GBTEX+TMBs by 8260D

Surrogate: Toluene-d8	90.7 %	70-130	B2F28 34	06/28/2022	06/29/2022
Surrogate: 4-Bromofluorobenzene	102 %	70-130	"	"	"

## Metals by Saturated Paste by EPA 6010

Calcium	1.22	0.499	meq/L	10	[CALC]	06/28/2022	06/29/2022
Magnesium	ND	0.823	"	"	"	"	"
Sodium	ND	0.435	"	"	"	"	"

## PAH by 8270D SIM

1-Methylnaphthalene	ND	0.000364	0.00067	mg/Kg	1	L624860	07/05/2022	07/05/2022
2-Methylnaphthalene	ND	0.000645	0.00067	"	"	"	"	"
Acenaphthene	ND	0.000304	0.00067	"	"	"	"	"
Anthracene	ND	0.000334	0.00067	"	"	"	"	"
Benzo(a)anthracene	ND	0.000493	0.00067	"	"	"	"	"
Benzo(a)pyrene	ND	0.000468	0.00067	"	"	"	"	"
Benzo(b)fluoranthene	ND	0.000585	0.00067	"	"	"	"	"
Benzo(k)fluoranthene	ND	0.000437	0.00067	"	"	"	"	"
Chrysene	ND	0.000624	0.00067	"	"	"	"	"
Dibenz(a,h)anthracene	ND	0.000614	0.00067	"	"	"	"	"
Fluoranthene	ND	0.000394	0.00067	"	"	"	"	"

Origins Laboratory, Inc.



The results in this report apply to the samples analyzed in accordance with the chain of custody document. This analytical report must be reproduced in its entirety.

Eagle Environmental Consulting, Inc.  
8000 W 44th Ave  
Wheat Ridge CO 80033

Martin C Eckert III  
Project Number: [none]  
Project: State Antelope 14-21-16XRLNB

CS-SS-03@1'

6/27/2022 1:49:00PM

Analyte	Result	Min Detection Limit	Reporting Limit	Units	Dilution	Batch	Prepared	Analyzed	Notes
---------	--------	---------------------	-----------------	-------	----------	-------	----------	----------	-------

Waypoint Analytical, Inc.  
Y206676-03 (Soil)

## PAH by 8270D SIM

Fluorene	ND	0.000286	0.00067	mg/Kg	1	L624860	07/05/2022	07/05/2022
Indeno(1,2,3-cd)pyrene	ND	0.000627	0.00067	"	"	"	"	"
Naphthalene	ND	0.000484	0.00067	"	"	"	"	"
Pyrene	ND	0.000643	0.00067	"	"	"	"	"

Surrogate: 2-Fluorobiphenyl	55 %	33-115	"	"	"
Surrogate: 4-Terphenyl-d14	65.9 %	33-122	"	"	"
Surrogate: Nitrobenzene-d5	69.8 %	29-110	"	"	"

## pH in Soil by 9045D

pH	8.13	pH Units	1	B2F2820	06/28/2022	06/29/2022
----	------	----------	---	---------	------------	------------

## SAR by 20B Saturated Paste

SAR	0.230	SAR	1	B2F2818	06/28/2022	06/29/2022
-----	-------	-----	---	---------	------------	------------

## Table 915 metals by EPA 6020B

Arsenic	1.93	0.119	mg/kg	1	B2F2822	06/28/2022	06/28/2022
Barium	217	11.9	"	"	"	"	"
Cadmium	ND	0.119	"	"	"	"	U
Selenium	ND	0.119	"	"	"	"	U

Origins Laboratory, Inc.



The results in this report apply to the samples analyzed in accordance with the chain of custody document. This analytical report must be reproduced in its entirety.

Eagle Environmental Consulting, Inc.  
8000 W 44th Ave  
Wheat Ridge CO 80033

Martin C Eckert III  
Project Number: [none]  
Project: State Antelope 14-21-16XRLNB

CS-SS-04@1'  
6/27/2022 1:51:00PM

Analyte	Result	Min Detection Limit	Reporting Limit	Units	Dilution	Batch	Prepared	Analyzed	Notes
---------	--------	---------------------	-----------------	-------	----------	-------	----------	----------	-------

**Origins Laboratory, Inc.**  
**Y206676-04 (Soil)**

**Boron (DTPA Sorbitol)**

Boron	ND	0.100	mg/L	1	B2F2817	06/28/2022	06/29/2022	
-------	----	-------	------	---	---------	------------	------------	--

**DRO/ORO by EPA 8015D**

Diesel (C10-C28)	ND	25.0	mg/kg	1	B2F2916	06/29/2022	07/07/2022	U
Residual Range Organics (C28-C40)	ND	100	"	"	"	"	"	U

Surrogate: o-Terphenyl	68.2 %	50-150			"	"	"
------------------------	--------	--------	--	--	---	---	---

**GBTEX+TMBs by 8260D**

1,2,4-Trimethylbenzene	ND	0.00200	mg/kg	1	B2F2834	06/28/2022	06/29/2022	U
1,3,5-Trimethylbenzene	ND	0.00200	"	"	"	"	"	U
Benzene	ND	0.00200	"	"	"	"	"	U
Ethylbenzene	ND	0.00200	"	"	"	"	"	U
Toluene	ND	0.00200	"	"	"	"	"	U
Xylenes, total	ND	0.00200	"	"	"	"	"	U
Gasoline Range Hydrocarbons	ND	0.200	"	"	"	"	"	U

Surrogate: 1,2-Dichloroethane-d4	97.8 %	70-130			"	"	"
----------------------------------	--------	--------	--	--	---	---	---

Origins Laboratory, Inc.



The results in this report apply to the samples analyzed in accordance with the chain of custody document. This analytical report must be reproduced in its entirety.

Eagle Environmental Consulting, Inc.  
8000 W 44th Ave  
Wheat Ridge CO 80033

Martin C Eckert III  
Project Number: [none]  
Project: State Antelope 14-21-16XRLNB

CS-SS-04@1'

6/27/2022 1:51:00PM

Analyte	Result	Min Detection Limit	Reporting Limit	Units	Dilution	Batch	Prepared	Analyzed	Notes
---------	--------	---------------------	-----------------	-------	----------	-------	----------	----------	-------

**Origins Laboratory, Inc.**  
**Y206676-04 (Soil)**

**GBTEX+TMBs by 8260D**

Surrogate: Toluene-d8	92.6 %	70-130	B2F28 34	06/28/2022	06/29/2022
Surrogate: 4-Bromofluorobenzene	104 %	70-130	"	"	"

**Metals by Saturated Paste by EPA 6010**

Calcium	3.82	0.499	meq/L	10	[CALC]	06/28/2022	06/29/2022
Magnesium	ND	0.823	"	"	"	"	"
Sodium	0.507	0.435	"	"	"	"	"

**PAH by 8270D SIM**

1-Methylnaphthalene	ND	0.000364	0.00067	mg/Kg	1	L624860	07/05/2022	07/05/2022
2-Methylnaphthalene	ND	0.000645	0.00067	"	"	"	"	"
Acenaphthene	ND	0.000304	0.00067	"	"	"	"	"
Anthracene	ND	0.000334	0.00067	"	"	"	"	"
Benzo(a)anthracene	ND	0.000493	0.00067	"	"	"	"	"
Benzo(a)pyrene	ND	0.000468	0.00067	"	"	"	"	"
Benzo(b)fluoranthene	ND	0.000585	0.00067	"	"	"	"	"
Benzo(k)fluoranthene	ND	0.000437	0.00067	"	"	"	"	"
Chrysene	0.00204	0.000624	0.00067	"	"	"	"	"
Dibenz(a,h)anthracene	ND	0.000614	0.00067	"	"	"	"	"
Fluoranthene	ND	0.000394	0.00067	"	"	"	"	"

Origins Laboratory, Inc.



The results in this report apply to the samples analyzed in accordance with the chain of custody document. This analytical report must be reproduced in its entirety.

Eagle Environmental Consulting, Inc.  
8000 W 44th Ave  
Wheat Ridge CO 80033

Martin C Eckert III  
Project Number: [none]  
Project: State Antelope 14-21-16XRLNB

CS-SS-04@1'

6/27/2022 1:51:00PM

Analyte	Result	Min Detection Limit	Reporting Limit	Units	Dilution	Batch	Prepared	Analyzed	Notes
---------	--------	---------------------	-----------------	-------	----------	-------	----------	----------	-------

Waypoint Analytical, Inc.  
Y206676-04 (Soil)

## PAH by 8270D SIM

Fluorene	ND	0.000286	0.00067	mg/Kg	1	L624860	07/05/2022	07/05/2022
Indeno(1,2,3-cd)pyrene	ND	0.000627	0.00067	"	"	"	"	"
Naphthalene	ND	0.000484	0.00067	"	"	"	"	"
Pyrene	ND	0.000643	0.00067	"	"	"	"	"

Surrogate: 2-Fluorobiphenyl	55 %	33-115	"	"	"
Surrogate: 4-Terphenyl-d14	60.4 %	33-122	"	"	"
Surrogate: Nitrobenzene-d5	67.9 %	29-110	"	"	"

## pH in Soil by 9045D

pH	8.25	pH Units	1	B2F2820	06/28/2022	06/29/2022
----	------	----------	---	---------	------------	------------

## SAR by 20B Saturated Paste

SAR	0.333	SAR	1	B2F2818	06/28/2022	06/29/2022
-----	-------	-----	---	---------	------------	------------

## Table 915 metals by EPA 6020B

Arsenic	2.10	0.108	mg/kg	1	B2F2822	06/28/2022	06/28/2022
Barium	532	10.8	"	"	"	"	"
Cadmium	ND	0.108	"	"	"	"	U
Selenium	ND	0.108	"	"	"	"	U

Origins Laboratory, Inc.



The results in this report apply to the samples analyzed in accordance with the chain of custody document. This analytical report must be reproduced in its entirety.



Eagle Environmental Consulting, Inc.  
8000 W 44th Ave  
Wheat Ridge CO 80033

Martin C Eckert III  
Project Number: [none]  
Project: State Antelope 14-21-16XRLNB

CS-FS-01@2'  
6/27/2022 1:53:00PM

Analyte	Result	Min Detection Limit	Reporting Limit	Units	Dilution	Batch	Prepared	Analyzed	Notes
---------	--------	---------------------	-----------------	-------	----------	-------	----------	----------	-------

Origins Laboratory, Inc.  
Y206676-05 (Soil)

## Boron (DTPA Sorbitol)

Boron	ND	0.100	mg/L	1	B2F2817	06/28/2022	06/29/2022
-------	----	-------	------	---	---------	------------	------------

## DRO/ORO by EPA 8015D

Diesel (C10-C28)	282	25.0	mg/kg	1	B2F2916	06/29/2022	07/07/2022
Residual Range Organics (C28-C40)	289	100	"	"	"	"	"

Surrogate: o-Terphenyl	75.9 %	50-150	"	"	"
------------------------	--------	--------	---	---	---

## GBTEX+TMBs by 8260D

1,2,4-Trimethylbenzene	ND	0.00200	mg/kg	1	B2F2834	06/28/2022	06/29/2022	U
1,3,5-Trimethylbenzene	ND	0.00200	"	"	"	"	"	U
Benzene	ND	0.00200	"	"	"	"	"	U
Ethylbenzene	ND	0.00200	"	"	"	"	"	U
Toluene	ND	0.00200	"	"	"	"	"	U
Xylenes, total	ND	0.00200	"	"	"	"	"	U
Gasoline Range Hydrocarbons	ND	0.200	"	"	"	"	"	U

Surrogate: 1,2-Dichloroethane-d4	98.8 %	70-130	"	"	"
Surrogate: Toluene-d8	90.9 %	70-130	"	"	"

Origins Laboratory, Inc.



The results in this report apply to the samples analyzed in accordance with the chain of custody document. This analytical report must be reproduced in its entirety.

Eagle Environmental Consulting, Inc.  
8000 W 44th Ave  
Wheat Ridge CO 80033

Martin C Eckert III  
Project Number: [none]  
Project: State Antelope 14-21-16XRLNB

CS-FS-01@2'

6/27/2022 1:53:00PM

Analyte	Result	Min Detection Limit	Reporting Limit	Units	Dilution	Batch	Prepared	Analyzed	Notes
---------	--------	---------------------	-----------------	-------	----------	-------	----------	----------	-------

Origins Laboratory, Inc.  
Y206676-05 (Soil)

## GBTEX+TMBs by 8260D

Surrogate: 4-Bromofluorobenzene 107 % 70-130 B2F28 34 06/28/2022 06/29/2022

## Metals by Saturated Paste by EPA 6010

Calcium	0.863	0.499	meq/L	10	[CALC]	06/28/2022	06/29/2022
Magnesium	ND	0.823	"	"	"	"	"
Sodium	6.96	0.435	"	"	"	"	"

## PAH by 8270D SIM

1-Methylnaphthalene	0.00723	0.00364	0.0067	mg/Kg	10	L624860	07/05/2022	07/05/2022	
2-Methylnaphthalene	ND	0.00645	0.0067	"	"	"	"	"	
Acenaphthene	0.00467	0.00304	0.0067	"	"	"	"	"	J
Anthracene	ND	0.00334	0.0067	"	"	"	"	"	
Benzo(a)anthracene	ND	0.00493	0.0067	"	"	"	"	"	
Benzo(a)pyrene	ND	0.00468	0.0067	"	"	"	"	"	
Benzo(b)fluoranthene	ND	0.00585	0.0067	"	"	"	"	"	
Benzo(k)fluoranthene	ND	0.00437	0.0067	"	"	"	"	"	
Chrysene	0.0495	0.00624	0.0067	"	"	"	"	"	
Dibenz(a,h)anthracene	ND	0.00614	0.0067	"	"	"	"	"	
Fluoranthene	ND	0.00394	0.0067	"	"	"	"	"	
Fluorene	0.0299	0.00286	0.0067	"	"	"	"	"	

Origins Laboratory, Inc.



The results in this report apply to the samples analyzed in accordance with the chain of custody document. This analytical report must be reproduced in its entirety.

Eagle Environmental Consulting, Inc.  
8000 W 44th Ave  
Wheat Ridge CO 80033

Martin C Eckert III  
Project Number: [none]  
Project: State Antelope 14-21-16XRLNB

CS-FS-01@2'

6/27/2022 1:53:00PM

Analyte	Result	Min Detection Limit	Reporting Limit	Units	Dilution	Batch	Prepared	Analyzed	Notes
---------	--------	---------------------	-----------------	-------	----------	-------	----------	----------	-------

Waypoint Analytical, Inc.  
Y206676-05 (Soil)

## PAH by 8270D SIM

Indeno(1,2,3-cd)pyrene	ND	0.00627	0.0067	mg/Kg	10	L624860	07/05/2022	07/05/2022
Naphthalene	ND	0.00484	0.0067	"	"	"	"	"
Pyrene	0.0158	0.00643	0.0067	"	"	"	"	"

Surrogate: 2-Fluorobiphenyl	58.8 %	33-115	"	"	"
Surrogate: 4-Terphenyl-d14	66.7 %	33-122	"	"	"
Surrogate: Nitrobenzene-d5	68.5 %	29-110	"	"	"

## pH in Soil by 9045D

pH	8.45	pH Units	1	B2F2820	06/28/2022	06/29/2022
----	------	----------	---	---------	------------	------------

## SAR by 20B Saturated Paste

SAR	9.48	SAR	1	B2F2818	06/28/2022	06/29/2022
-----	------	-----	---	---------	------------	------------

## Table 915 metals by EPA 6020B

Arsenic	1.62	0.0838	mg/kg	1	B2F2822	06/28/2022	06/28/2022
Barium	52.5	8.38	"	"	"	"	"
Cadmium	ND	0.0838	"	"	"	"	U
Selenium	ND	0.0838	"	"	"	"	U

Origins Laboratory, Inc.



The results in this report apply to the samples analyzed in accordance with the chain of custody document. This analytical report must be reproduced in its entirety.

Eagle Environmental Consulting, Inc.  
8000 W 44th Ave  
Wheat Ridge CO 80033

Martin C Eckert III  
Project Number: [none]  
Project: State Antelope 14-21-16XRLNB

CS-FS-02@0.75'  
6/27/2022 1:55:00PM

Analyte	Result	Min Detection Limit	Reporting Limit	Units	Dilution	Batch	Prepared	Analyzed	Notes
---------	--------	---------------------	-----------------	-------	----------	-------	----------	----------	-------

Origins Laboratory, Inc.  
Y206676-06 (Soil)

## Boron (DTPA Sorbitol)

Boron	ND	0.100	mg/L	1	B2F2817	06/28/2022	06/29/2022	
-------	----	-------	------	---	---------	------------	------------	--

## DRO/ORO by EPA 8015D

Diesel (C10-C28)	ND	25.0	mg/kg	1	B2F2916	06/29/2022	07/07/2022	U
Residual Range Organics (C28-C40)	ND	100	"	"	"	"	"	U

Surrogate: o-Terphenyl	68.5 %	50-150			"	"	"
------------------------	--------	--------	--	--	---	---	---

## GBTEX+TMBs by 8260D

1,2,4-Trimethylbenzene	ND	0.00200	mg/kg	1	B2F2834	06/28/2022	06/29/2022	U
1,3,5-Trimethylbenzene	ND	0.00200	"	"	"	"	"	U
Benzene	ND	0.00200	"	"	"	"	"	U
Ethylbenzene	ND	0.00200	"	"	"	"	"	U
Toluene	ND	0.00200	"	"	"	"	"	U
Xylenes, total	ND	0.00200	"	"	"	"	"	U
Gasoline Range Hydrocarbons	ND	0.200	"	"	"	"	"	U

Surrogate: 1,2-Dichloroethane-d4	97.6 %	70-130			"	"	"
----------------------------------	--------	--------	--	--	---	---	---

Origins Laboratory, Inc.



The results in this report apply to the samples analyzed in accordance with the chain of custody document. This analytical report must be reproduced in its entirety.

Eagle Environmental Consulting, Inc.  
8000 W 44th Ave  
Wheat Ridge CO 80033

Martin C Eckert III  
Project Number: [none]  
Project: State Antelope 14-21-16XRLNB

CS-FS-02@0.75'

6/27/2022 1:55:00PM

Analyte	Result	Min Detection Limit	Reporting Limit	Units	Dilution	Batch	Prepared	Analyzed	Notes
---------	--------	---------------------	-----------------	-------	----------	-------	----------	----------	-------

Origins Laboratory, Inc.  
Y206676-06 (Soil)

## GBTEX+TMBs by 8260D

Surrogate: Toluene-d8	92.3 %	70-130	B2F28 34	06/28/2022	06/29/2022
Surrogate: 4-Bromofluorobenzene	104 %	70-130	"	"	"

## Metals by Saturated Paste by EPA 6010

Calcium	1.02	0.499	meq/L	10	[CALC]	06/28/2022	06/29/2022
Magnesium	ND	0.823	"	"	"	"	"
Sodium	ND	0.435	"	"	"	"	"

## PAH by 8270D SIM

1-Methylnaphthalene	ND	0.000364	0.00067	mg/Kg	1	L624860	07/05/2022	07/05/2022
2-Methylnaphthalene	ND	0.000645	0.00067	"	"	"	"	"
Acenaphthene	ND	0.000304	0.00067	"	"	"	"	"
Anthracene	ND	0.000334	0.00067	"	"	"	"	"
Benzo(a)anthracene	ND	0.000493	0.00067	"	"	"	"	"
Benzo(a)pyrene	ND	0.000468	0.00067	"	"	"	"	"
Benzo(b)fluoranthene	ND	0.000585	0.00067	"	"	"	"	"
Benzo(k)fluoranthene	ND	0.000437	0.00067	"	"	"	"	"
Chrysene	0.000708	0.000624	0.00067	"	"	"	"	"
Dibenz(a,h)anthracene	ND	0.000614	0.00067	"	"	"	"	"
Fluoranthene	ND	0.000394	0.00067	"	"	"	"	"

Origins Laboratory, Inc.



The results in this report apply to the samples analyzed in accordance with the chain of custody document. This analytical report must be reproduced in its entirety.

Eagle Environmental Consulting, Inc.  
8000 W 44th Ave  
Wheat Ridge CO 80033

Martin C Eckert III  
Project Number: [none]  
Project: State Antelope 14-21-16XRLNB

CS-FS-02@0.75'

6/27/2022 1:55:00PM

Analyte	Result	Min Detection Limit	Reporting Limit	Units	Dilution	Batch	Prepared	Analyzed	Notes
---------	--------	---------------------	-----------------	-------	----------	-------	----------	----------	-------

Waypoint Analytical, Inc.  
Y206676-06 (Soil)

## PAH by 8270D SIM

Fluorene	ND	0.000286	0.00067	mg/Kg	1	L624860	07/05/2022	07/05/2022
Indeno(1,2,3-cd)pyrene	ND	0.000627	0.00067	"	"	"	"	"
Naphthalene	ND	0.000484	0.00067	"	"	"	"	"
Pyrene	ND	0.000643	0.00067	"	"	"	"	"

Surrogate: 2-Fluorobiphenyl	48.6 %	33-115	"	"	"
Surrogate: 4-Terphenyl-d14	58 %	33-122	"	"	"
Surrogate: Nitrobenzene-d5	61.9 %	29-110	"	"	"

## pH in Soil by 9045D

pH	8.33	pH Units	1	B2F2820	06/28/2022	06/29/2022
----	------	----------	---	---------	------------	------------

## SAR by 20B Saturated Paste

SAR	0.183	SAR	1	B2F2818	06/28/2022	06/29/2022
-----	-------	-----	---	---------	------------	------------

## Table 915 metals by EPA 6020B

Arsenic	1.80	0.120	mg/kg	1	B2F2822	06/28/2022	06/28/2022
Barium	81.1	12.0	"	"	"	"	"
Cadmium	ND	0.120	"	"	"	"	U
Selenium	ND	0.120	"	"	"	"	U

Origins Laboratory, Inc.



The results in this report apply to the samples analyzed in accordance with the chain of custody document. This analytical report must be reproduced in its entirety.

Eagle Environmental Consulting, Inc.  
8000 W 44th Ave  
Wheat Ridge CO 80033

Martin C Eckert III  
Project Number: [none]  
Project: State Antelope 14-21-16XRLNB

**Volatile Organic Compounds by GC/MS SW846 8260D - Quality Control**  
**Origins Laboratory, Inc.**

Analyte	Result	Reporting Limit	Units	Spike Level	Source Result	%REC	%REC Limits	RPD	RPD Limit	Notes
<b>Batch B2F2834 - EPA 5030 (soil)</b>										
<b>Blank (B2F2834-BLK1)</b>					Prepared: 06/28/2022 Analyzed: 06/29/2022					
1,2,4-Trimethylbenzene	ND	0.00200	mg/kg							U
1,3,5-Trimethylbenzene	ND	0.00200	"							U
Benzene	ND	0.00200	"							U
Ethylbenzene	ND	0.00200	"							U
Naphthalene	ND	0.0100	"							U
Toluene	ND	0.00200	"							U
Xylenes, total	ND	0.00200	"							U
Gasoline Range Hydrocarbons	ND	0.200	"							U
Surrogate: 1,2-Dichloroethane-d4	0.11		"	0.125		90.5	70-130			
Surrogate: Toluene-d8	0.12		"	0.125		92.7	70-130			
Surrogate: 4-Bromofluorobenzene	0.13		"	0.125		103	70-130			

Origins Laboratory, Inc.



The results in this report apply to the samples analyzed in accordance with the chain of custody document. This analytical report must be reproduced in its entirety.



Eagle Environmental Consulting, Inc.  
8000 W 44th Ave  
Wheat Ridge CO 80033

Martin C Eckert III  
Project Number: [none]  
Project: State Antelope 14-21-16XRLNB

**Volatile Organic Compounds by GC/MS SW846 8260D - Quality Control**  
**Origins Laboratory, Inc.**

Analyte	Result	Reporting Limit	Units	Spike Level	Source Result	%REC	%REC Limits	RPD	RPD Limit	Notes
<b>Batch B2F2834 - EPA 5030 (soil)</b>										
<b>LCS (B2F2834-BS1)</b>					Prepared: 06/28/2022 Analyzed: 06/29/2022					
1,2,4-Trimethylbenzene	0.121	0.00200	mg/kg	0.100		121	70-130			
1,3,5-Trimethylbenzene	0.122	0.00200	"	0.100		122	70-130			
Benzene	0.0959	0.00200	"	0.100		95.9	70-130			
Ethylbenzene	0.115	0.00200	"	0.100		115	70-130			
Naphthalene	0.117	0.0100	"	0.100		117	70-130			
Toluene	0.0980	0.00200	"	0.100		98.0	70-130			
o-Xylene	0.114	0.00200	"	0.100		114	70-130			
m,p-Xylene	0.234	0.00400	"	0.200		117	70-130			
Surrogate: 1,2-Dichloroethane-d4	0.11		"	0.125		91.1	70-130			
Surrogate: Toluene-d8	0.12		"	0.125		94.8	70-130			
Surrogate: 4-Bromofluorobenzene	0.13		"	0.125		103	70-130			

Origins Laboratory, Inc.



*The results in this report apply to the samples analyzed in accordance with the chain of custody document. This analytical report must be reproduced in its entirety.*

Eagle Environmental Consulting, Inc.  
8000 W 44th Ave  
Wheat Ridge CO 80033

Martin C Eckert III  
Project Number: [none]  
Project: State Antelope 14-21-16XRLNB

**Volatile Organic Compounds by GC/MS SW846 8260D - Quality Control**  
**Origins Laboratory, Inc.**

Analyte	Result	Reporting Limit	Units	Spike Level	Source Result	%REC	%REC Limits	RPD	RPD Limit	Notes
<b>Batch B2F2834 - EPA 5030 (soil)</b>										
<b>Matrix Spike (B2F2834-MS1)</b>		<b>Source: Y206659-01</b>			Prepared: 06/28/2022 Analyzed: 06/29/2022					
1,2,4-Trimethylbenzene	0.120	0.00200	mg/kg	0.100	ND	120	70-130			
1,3,5-Trimethylbenzene	0.119	0.00200	"	0.100	ND	119	70-130			
Benzene	0.0960	0.00200	"	0.100	ND	96.0	70-130			
Ethylbenzene	0.115	0.00200	"	0.100	ND	115	70-130			
Naphthalene	0.102	0.0100	"	0.100	0.00160	101	70-130			
Toluene	0.0986	0.00200	"	0.100	ND	98.6	70-130			
o-Xylene	0.115	0.00200	"	0.100	ND	115	70-130			
m,p-Xylene	0.236	0.00400	"	0.200	ND	118	70-130			
Surrogate: 1,2-Dichloroethane-d4	0.11		"	0.125		90.4	70-130			
Surrogate: Toluene-d8	0.12		"	0.125		94.1	70-130			
Surrogate: 4-Bromofluorobenzene	0.13		"	0.125		104	70-130			

Origins Laboratory, Inc.



The results in this report apply to the samples analyzed in accordance with the chain of custody document. This analytical report must be reproduced in its entirety.

Eagle Environmental Consulting, Inc.  
8000 W 44th Ave  
Wheat Ridge CO 80033

Martin C Eckert III  
Project Number: [none]  
Project: State Antelope 14-21-16XRLNB

**Volatile Organic Compounds by GC/MS SW846 8260D - Quality Control**  
**Origins Laboratory, Inc.**

Analyte	Result	Reporting Limit	Units	Spike Level	Source Result	%REC	%REC Limits	RPD	RPD Limit	Notes
<b>Batch B2F2834 - EPA 5030 (soil)</b>										
<b>Matrix Spike Dup (B2F2834-MSD1)</b>			<b>Source: Y206659-01</b>			Prepared: 06/28/2022 Analyzed: 06/29/2022				
1,2,4-Trimethylbenzene	0.117	0.00200	mg/kg	0.100	ND	117	70-130	2.01	20	
1,3,5-Trimethylbenzene	0.118	0.00200	"	0.100	ND	118	70-130	1.23	20	
Benzene	0.0958	0.00200	"	0.100	ND	95.8	70-130	0.188	20	
Ethylbenzene	0.112	0.00200	"	0.100	ND	112	70-130	2.02	20	
Naphthalene	0.102	0.0100	"	0.100	0.00160	101	70-130	0.0586	20	
Toluene	0.0972	0.00200	"	0.100	ND	97.2	70-130	1.39	20	
o-Xylene	0.113	0.00200	"	0.100	ND	113	70-130	2.11	20	
m,p-Xylene	0.231	0.00400	"	0.200	ND	115	70-130	2.31	20	
Surrogate: 1,2-Dichloroethane-d4	0.11		"	0.125		90.7	70-130			
Surrogate: Toluene-d8	0.12		"	0.125		94.0	70-130			
Surrogate: 4-Bromofluorobenzene	0.13		"	0.125		103	70-130			

Origins Laboratory, Inc.



The results in this report apply to the samples analyzed in accordance with the chain of custody document. This analytical report must be reproduced in its entirety.

Eagle Environmental Consulting, Inc.  
8000 W 44th Ave  
Wheat Ridge CO 80033

Martin C Eckert III  
Project Number: [none]  
Project: State Antelope 14-21-16XRLNB

**Volatile Organic Compounds by GC/MS SW846 8260D - Quality Control**  
**Origins Laboratory, Inc.**

Analyte	Result	Reporting Limit	Units	Spike Level	Source Result	%REC	%REC Limits	RPD	RPD Limit	Notes
---------	--------	-----------------	-------	-------------	---------------	------	-------------	-----	-----------	-------

Batch B2F2916 - EPA 3580

Blank (B2F2916-BLK1)

Prepared: 06/29/2022 Analyzed: 07/07/2022

Diesel (C10-C28)	ND	25.0	mg/kg							U
Residual Range Organics (C28-C40)	ND	100	"							U
Surrogate: o-Terphenyl	19		"	24.9		77.2	50-150			

Origins Laboratory, Inc.



*The results in this report apply to the samples analyzed in accordance with the chain of custody document. This analytical report must be reproduced in its entirety.*

Eagle Environmental Consulting, Inc.  
8000 W 44th Ave  
Wheat Ridge CO 80033

Martin C Eckert III  
Project Number: [none]  
Project: State Antelope 14-21-16XRLNB

**Extractable Petroleum Hydrocarbons by 8015D - Quality Control**  
**Origins Laboratory, Inc.**

Analyte	Result	Reporting Limit	Units	Spike Level	Source Result	%REC	%REC Limits	RPD	RPD Limit	Notes
---------	--------	-----------------	-------	-------------	---------------	------	-------------	-----	-----------	-------

Batch B2F2916 - EPA 3580

**LCS (B2F2916-BS1)**

Prepared: 06/29/2022 Analyzed: 07/07/2022

Diesel (C10-C28)	894	50.0	mg/kg	1000		89.4	70-130			
Residual Range Organics (C28-C40)	898	200	"	1000		89.8	70-130			
Surrogate: o-Terphenyl	38		"	49.8		76.7	50-150			

Origins Laboratory, Inc.



*The results in this report apply to the samples analyzed in accordance with the chain of custody document. This analytical report must be reproduced in its entirety.*



Eagle Environmental Consulting, Inc.  
8000 W 44th Ave  
Wheat Ridge CO 80033

Martin C Eckert III  
Project Number: [none]  
Project: State Antelope 14-21-16XRLNB

**Extractable Petroleum Hydrocarbons by 8015D - Quality Control**  
**Origins Laboratory, Inc.**

Analyte	Result	Reporting Limit	Units	Spike Level	Source Result	%REC	%REC Limits	RPD	RPD Limit	Notes
---------	--------	-----------------	-------	-------------	---------------	------	-------------	-----	-----------	-------

**Batch B2F2916 - EPA 3580**

Matrix Spike (B2F2916-MS1)		Source: Y206659-01			Prepared: 06/29/2022 Analyzed: 07/07/2022					
Diesel (C10-C28)	1030	50.0	mg/kg	1000	ND	103	70-130			
Residual Range Organics (C28-C40)	1110	200	"	1000	ND	111	70-130			
Surrogate: o-Terphenyl	52		"	49.8		104	50-150			

Origins Laboratory, Inc.



*The results in this report apply to the samples analyzed in accordance with the chain of custody document. This analytical report must be reproduced in its entirety.*

Eagle Environmental Consulting, Inc.  
8000 W 44th Ave  
Wheat Ridge CO 80033

Martin C Eckert III  
Project Number: [none]  
Project: State Antelope 14-21-16XRLNB

## Extractable Petroleum Hydrocarbons by 8015D - Quality Control Origins Laboratory, Inc.

Analyte	Result	Reporting Limit	Units	Spike Level	Source Result	%REC	%REC Limits	RPD	RPD Limit	Notes
---------	--------	-----------------	-------	-------------	---------------	------	-------------	-----	-----------	-------

Batch B2F2916 - EPA 3580

Matrix Spike Dup (B2F2916-MSD1)		Source: Y206659-01			Prepared: 06/29/2022 Analyzed: 07/07/2022					
Diesel (C10-C28)	925	50.0	mg/kg	1000	ND	92.5	70-130	10.6	35	
Residual Range Organics (C28-C40)	986	200	"	1000	ND	98.6	70-130	12.0	35	
Surrogate: o-Terphenyl	46		"	49.8		91.7	50-150			

Origins Laboratory, Inc.



The results in this report apply to the samples analyzed in accordance with the chain of custody document. This analytical report must be reproduced in its entirety.

Eagle Environmental Consulting, Inc.  
8000 W 44th Ave  
Wheat Ridge CO 80033

Martin C Eckert III  
Project Number: [none]  
Project: State Antelope 14-21-16XRLNB

## Extractable Petroleum Hydrocarbons by 8015D - Quality Control

### Origins Laboratory, Inc.

Analyte	Result	Reporting Limit	Units	Spike Level	Source Result	%REC	%REC Limits	RPD	RPD Limit	Notes
---------	--------	-----------------	-------	-------------	---------------	------	-------------	-----	-----------	-------

## Metals by SM 3500 Series Methods - Quality Control

### Origins Laboratory, Inc.

Analyte	Result	Reporting Limit	Units	Spike Level	Source Result	%REC	%REC Limits	RPD	RPD Limit	Notes
---------	--------	-----------------	-------	-------------	---------------	------	-------------	-----	-----------	-------

#### Batch B2F2822 - Default Prep Metals

##### Blank (B2F2822-BLK1)

Prepared: 06/28/2022 Analyzed: 06/28/2022

Arsenic	ND	0.00100	mg/kg							U
Barium	ND	0.100	"							U
Cadmium	ND	0.00100	"							U
Copper	ND	0.0100	"							U
Lead	ND	0.00100	"							U
Nickel	ND	0.00100	"							U
Selenium	ND	0.00100	"							U
Silver	ND	0.00100	"							U
Zinc	ND	0.100	"							U

##### LCS (B2F2822-BS1)

Prepared: 06/28/2022 Analyzed: 06/28/2022

Arsenic	0.0431	0.00100	mg/kg	0.0500		86.3	80-120
Barium	4.99	0.100	"	5.00		99.9	80-120
Cadmium	0.0501	0.00100	"	0.0500		100	80-120
Copper	0.464	0.0100	"	0.500		92.8	80-120
Lead	0.0500	0.00100	"	0.0500		100	80-120
Nickel	0.0532	0.00100	"	0.0500		106	80-120
Selenium	0.0460	0.00100	"	0.0500		92.0	80-120
Silver	0.0480	0.00100	"	0.0500		95.9	80-120
Zinc	0.448	0.100	"	0.500		89.7	80-120

##### Matrix Spike (B2F2822-MS1)

Source: Y206235-01

Prepared: 06/28/2022 Analyzed: 06/28/2022

Origins Laboratory, Inc.



The results in this report apply to the samples analyzed in accordance with the chain of custody document. This analytical report must be reproduced in its entirety.

Eagle Environmental Consulting, Inc.  
8000 W 44th Ave  
Wheat Ridge CO 80033

Martin C Eckert III  
Project Number: [none]  
Project: State Antelope 14-21-16XRLNB

## Metals by SM 3500 Series Methods - Quality Control

### Origins Laboratory, Inc.

Analyte	Result	Reporting Limit	Units	Spike Level	Source Result	%REC	%REC Limits	RPD	RPD Limit	Notes
<b>Batch B2F2822 - Default Prep Metals</b>										
<b>Matrix Spike (B2F2822-MS1)</b>			<b>Source: Y206235-01</b>		Prepared: 06/28/2022 Analyzed: 06/28/2022					
Arsenic	6.64	0.0863	mg/kg	4.32	2.39	98.6	75-125			
Barium	502	8.63	"	432	49.2	105	75-125			
Cadmium	4.79	0.0863	"	4.32	0.390	102	75-125			
Copper	54.8	0.863	"	43.2	12.0	99.1	75-125			
Lead	27.7	0.0863	"	4.32	13.7	325	75-125			QM-07, QR-DUP
Nickel	9.89	0.0863	"	4.32	4.26	130	75-125			QM-07
Selenium	4.08	0.0863	"	4.32	0.102	92.2	75-125			
Silver	4.25	0.0863	"	4.32	0.123	95.5	75-125			
Zinc	92.9	8.63	"	43.2	46.4	108	75-125			
<b>Matrix Spike Dup (B2F2822-MSD1)</b>			<b>Source: Y206235-01</b>		Prepared: 06/28/2022 Analyzed: 06/28/2022					
Arsenic	6.28	0.0860	mg/kg	4.30	2.39	90.6	75-125	5.58	20	
Barium	480	8.60	"	430	49.2	100	75-125	4.49	20	
Cadmium	4.65	0.0860	"	4.30	0.390	99.0	75-125	3.06	20	
Copper	53.4	0.860	"	43.0	12.0	96.4	75-125	2.48	20	
Lead	19.8	0.0860	"	4.30	13.7	143	75-125	33.1	20	QM-07, QR-DUP
Nickel	9.04	0.0860	"	4.30	4.26	111	75-125	9.00	20	
Selenium	3.96	0.0860	"	4.30	0.102	89.7	75-125	3.15	20	
Silver	4.29	0.0860	"	4.30	0.123	97.1	75-125	1.10	20	
Zinc	84.8	8.60	"	43.0	46.4	89.4	75-125	9.16	20	

Origins Laboratory, Inc.



The results in this report apply to the samples analyzed in accordance with the chain of custody document. This analytical report must be reproduced in its entirety.

Eagle Environmental Consulting, Inc.  
8000 W 44th Ave  
Wheat Ridge CO 80033

Martin C Eckert III  
Project Number: [none]  
Project: State Antelope 14-21-16XRLNB

**Saturated Paste - Quality Control**  
**Origins Laboratory, Inc.**

Analyte	Result	Reporting Limit	Units	Spike Level	Source Result	%REC	%REC Limits	RPD	RPD Limit	Notes
<b>Batch B2F2820 - NO PREP</b>										
<b>Blank (B2F2820-BLK1)</b>					Prepared: 06/28/2022 Analyzed: 06/29/2022					
pH	0.00		pH Units							
<b>Duplicate (B2F2820-DUP1)</b>					Source: Y206646-06 Prepared: 06/28/2022 Analyzed: 06/29/2022					
pH	8.25		pH Units		8.33			0.965	25	

Origins Laboratory, Inc.



*The results in this report apply to the samples analyzed in accordance with the chain of custody document. This analytical report must be reproduced in its entirety.*



Eagle Environmental Consulting, Inc.  
8000 W 44th Ave  
Wheat Ridge CO 80033

Martin C Eckert III  
Project Number: [none]  
Project: State Antelope 14-21-16XRLNB

**PAH by 8270D SIM - Quality Control**  
**Waypoint Analytical, Inc.**

Analyte	Result	Reporting Limit	Units	Spike Level	Source Result	%REC	%REC Limits	RPD	RPD Limit	Notes
---------	--------	-----------------	-------	-------------	---------------	------	-------------	-----	-----------	-------

**Batch L624860 - 3550B**

MSD (L 84925-MSD-L624860)		Source: Y206676-04			Prepared: 07/05/2022 Analyzed: 07/05/2022					
Anthracene	0.105	0.000334	mg/Kg	0.166	<0.000334	63.2	30-130	11.1	30	
2-Methylnaphthalene	0.0988	0.000645	"	0.166	<0.000645	59.5	30-130	18.9	30	
Pyrene	0.105	0.000643	"	0.166	<0.000643	63.2	30-130	8.9	30	
Acenaphthene	0.105	0.000304	"	0.166	<0.000304	63.2	30-130	15.2	30	
Benzo(a)anthracene	0.114	0.000493	"	0.166	<0.000493	68.6	30-130	10.1	30	
Benzo(a)pyrene	0.119	0.000468	"	0.166	<0.000468	71.6	30-130	7.8	30	
Benzo(b)fluoranthene	0.0826	0.000585	"	0.166	<0.000585	49.7	30-130	1	30	
1-Methylnaphthalene	0.099	0.000364	"	0.166	<0.000364	59.6	30-130	18.5	30	
Chrysene	0.118	0.000624	"	0.166	0.00204	69.8	30-130	10.7	30	
Dibenz(a,h)anthracene	0.12	0.000614	"	0.166	<0.000614	72.2	30-130	3.3	30	
Fluoranthene	0.106	0.000394	"	0.166	<0.000394	63.8	30-130	9.2	30	
Fluorene	0.111	0.000286	"	0.166	<0.000286	66.8	30-130	15.5	30	
Indeno(1,2,3-cd)pyrene	0.0942	0.000627	"	0.166	<0.000627	56.7	30-130	1.4	30	
Benzo(k)fluoranthene	0.112	0.000437	"	0.166	<0.000437	67.4	30-130	21.5	30	
Naphthalene	0.0947	0.000484	"	0.166	<0.000484	57	30-130	19.5	30	
Surrogate: 2-Fluorobiphenyl	65.8		"	0.331	183	65.8	33-115			
Surrogate: Nitrobenzene-d5	79.7		"	0.331	226	79.7	29-110			
Surrogate: 4-Terphenyl-d14	71.2		"	0.331	201	71.2	33-122			

MS (L 84925-MS-L624860)		Source: Y206676-04			Prepared: 07/05/2022 Analyzed: 07/05/2022					
Benzo(k)fluoranthene	0.0902	0.000437	mg/Kg	0.165	<0.000437	54.6	30-130			
Chrysene	0.106	0.000624	"	0.165	0.00204	63	30-130			
Dibenz(a,h)anthracene	0.116	0.000614	"	0.165	<0.000614	70.3	30-130			
Fluoranthene	0.0966	0.000394	"	0.165	<0.000394	58.5	30-130			
Fluorene	0.095	0.000286	"	0.165	<0.000286	57.5	30-130			
Naphthalene	0.0778	0.000484	"	0.165	<0.000484	47.1	30-130			
1-Methylnaphthalene	0.0822	0.000364	"	0.165	<0.000364	49.8	30-130			

Origins Laboratory, Inc.



The results in this report apply to the samples analyzed in accordance with the chain of custody document. This analytical report must be reproduced in its entirety.

Eagle Environmental Consulting, Inc.  
8000 W 44th Ave  
Wheat Ridge CO 80033

Martin C Eckert III  
Project Number: [none]  
Project: State Antelope 14-21-16XRLNB

**PAH by 8270D SIM - Quality Control**  
**Waypoint Analytical, Inc.**

Analyte	Result	Reporting Limit	Units	Spike Level	Source Result	%REC	%REC Limits	RPD	RPD Limit	Notes
---------	--------	-----------------	-------	-------------	---------------	------	-------------	-----	-----------	-------

**Batch L624860 - 3550B**

MS (L 84925-MS-L624860)		Source: Y206676-04			Prepared: 07/05/2022 Analyzed: 07/05/2022					
Indeno(1,2,3-cd)pyrene	0.0928	0.000627	mg/Kg	0.165	<0.000627	56.2	30-130			
Benzo(b)fluoranthene	0.0835	0.000585	"	0.165	<0.000585	50.6	30-130			
Benzo(a)pyrene	0.11	0.000468	"	0.165	<0.000468	66.6	30-130			
Benzo(a)anthracene	0.103	0.000493	"	0.165	<0.000493	62.4	30-130			
Anthracene	0.0939	0.000334	"	0.165	<0.000334	56.9	30-130			
Acenaphthene	0.0901	0.000304	"	0.165	<0.000304	54.6	30-130			
Pyrene	0.096	0.000643	"	0.165	<0.000643	58.1	30-130			
2-Methylnaphthalene	0.0817	0.000645	"	0.165	<0.000645	49.5	30-130			
Surrogate: Nitrobenzene-d5	64.5		"	0.33	226	64.5	29-110			
Surrogate: 4-Terphenyl-d14	65.4		"	0.33	201	65.4	33-122			
Surrogate: 2-Fluorobiphenyl	54.5		"	0.33	183	54.5	33-115			

LCS (LCS-L624860)		Prepared: 07/05/2022 Analyzed: 07/05/2022								
Benzo(k)fluoranthene	0.104	0.000437	mg/Kg	0.167		62.2	30-130			
Chrysene	0.111	0.000624	"	0.167		66.4	30-130			
Pyrene	0.107	0.000643	"	0.167		64	30-130			
Naphthalene	0.0868	0.000484	"	0.167		51.9	30-130			
Indeno(1,2,3-cd)pyrene	0.0899	0.000627	"	0.167		53.8	30-130			
Fluorene	0.103	0.000286	"	0.167		61.6	30-130			
Benzo(a)pyrene	0.117	0.000468	"	0.167		70	30-130			
Dibenz(a,h)anthracene	0.106	0.000614	"	0.167		63.4	30-130			
1-Methylnaphthalene	0.0895	0.000364	"	0.167		53.5	30-130			
Benzo(b)fluoranthene	0.0779	0.000585	"	0.167		46.6	30-130			
Benzo(a)anthracene	0.112	0.000493	"	0.167		67	30-130			
Anthracene	0.102	0.000334	"	0.167		61	30-130			
Acenaphthene	0.0965	0.000304	"	0.167		57.7	30-130			
2-Methylnaphthalene	0.0893	0.000645	"	0.167		53.4	30-130			

Origins Laboratory, Inc.



The results in this report apply to the samples analyzed in accordance with the chain of custody document. This analytical report must be reproduced in its entirety.

Eagle Environmental Consulting, Inc.  
8000 W 44th Ave  
Wheat Ridge CO 80033

Martin C Eckert III  
Project Number: [none]  
Project: State Antelope 14-21-16XRLNB

**PAH by 8270D SIM - Quality Control**  
**Waypoint Analytical, Inc.**

Analyte	Result	Reporting Limit	Units	Spike Level	Source Result	%REC	%REC Limits	RPD	RPD Limit	Notes
<b>Batch L624860 - 3550B</b>										
<b>LCS (LCS-L624860)</b>					Prepared: 07/05/2022 Analyzed: 07/05/2022					
Fluoranthene	0.108	0.000394	mg/Kg	0.167		64.6	30-130			
Surrogate: Nitrobenzene-d5	77.4		"	0.333		77.4	29-110			
Surrogate: 4-Terphenyl-d14	81		"	0.333		81	33-122			
Surrogate: 2-Fluorobiphenyl	63.9		"	0.333		63.9	33-115			
<b>LRB (LRB-L624860)</b>					Prepared: 07/05/2022 Analyzed: 07/05/2022					
Benzo(k)fluoranthene	ND	0.00067	mg/Kg				-			
Benzo(b)fluoranthene	ND	0.00067	"				-			
Pyrene	ND	0.00067	"				-			
Naphthalene	ND	0.00067	"				-			
Indeno(1,2,3-cd)pyrene	ND	0.00067	"				-			
Fluorene	ND	0.00067	"				-			
Fluoranthene	ND	0.00067	"				-			
Benzo(a)pyrene	ND	0.00067	"				-			
Chrysene	ND	0.00067	"				-			
1-Methylnaphthalene	ND	0.00067	"				-			
Benzo(a)anthracene	ND	0.00067	"				-			
Anthracene	ND	0.00067	"				-			
Acenaphthene	ND	0.00067	"				-			
2-Methylnaphthalene	ND	0.00067	"				-			
Dibenz(a,h)anthracene	ND	0.00067	"				-			
Surrogate: Nitrobenzene-d5	70.8		"	0.333		70.8	29-110			
Surrogate: 4-Terphenyl-d14	73.8		"	0.333		73.8	33-122			
Surrogate: 2-Fluorobiphenyl	59.1		"	0.333		59.1	33-115			

Origins Laboratory, Inc.



The results in this report apply to the samples analyzed in accordance with the chain of custody document. This analytical report must be reproduced in its entirety.

Eagle Environmental Consulting, Inc.  
8000 W 44th Ave  
Wheat Ridge CO 80033

Martin C Eckert III  
Project Number: [none]  
Project: State Antelope 14-21-16XRLNB

### Notes and Definitions

U Sample is Non-Detect.

QR-DUP RPD exceeds QC acceptance criteria, this indicates source sample is not homogenous.

QM-07 The spike recovery was outside acceptance limits for the MS and/or MSD. The batch was accepted based on acceptable LCS recovery.

J Estimated Value. Analyte below reported quantitation limit.

\* QC Failure

ND Analyte NOT DETECTED at or above the reporting limit

RPD Relative Percent Difference

All soil results are reported on a wet weight basis.

Origins Laboratory, Inc.



*The results in this report apply to the samples analyzed in accordance with the chain of custody document. This analytical report must be reproduced in its entirety.*



September 02, 2022

Eagle Environmental Consulting, Inc.

Martin C Eckert III

8000 W 44th Ave

Wheat Ridge CO 80033

**Project Name - Civitas - State Antelope 14-21-16 XRLNB**      **Project Number - [none]**

Attached are your analytical results for Civitas - State Antelope 14-21-16 XRLNB received by Origins Laboratory, Inc. August 22, 2022. This project is associated with Origins project number Y208519-01.

The analytical results in the following report were analyzed under the guidelines of EPA Methods. These methods are identified as follows; "SW" are defined in SW-846, "EPA" are defined in 40CFR part 136 and "SM" are defined in the most current revision of Standard Methods For the Examination of Water and Wastewater.

The analytical results apply specifically to the samples and analyses specified per the attached Chain of Custody. As such, this report shall not be reproduced except in full, without the written approval of Origin's laboratory.

Unless otherwise noted, the analytical results for all soil samples are reported on a wet weight basis. All analytical analyses were performed under NELAP guidelines unless noted by a data qualifier.

Any holding time exceedances, deviations from the method specifications or deviations from Origins Laboratory's Standard Operating Procedures are outlined in the case narrative.

Thank you for selecting Origins for your analytical needs. Please contact us with any questions concerning this report, or if we can help with anything at all.

Origins Laboratory, Inc.  
303.433.1322  
o-squad@oelabinc.com



1725 Elk Place, Denver, CO 80211 | Phone: 303.433.1322 | Fax: 303.265.9645

Eagle Environmental Consulting, Inc.

8000 W 44th Ave

Wheat Ridge CO 80033

Martin C Eckert III

Project Number: [none]

Project: Civitas - State Antelope 14-21-16 XRLNB

## CROSS REFERENCE REPORT

Sample ID	Laboratory ID	Matrix	Date Sampled	Date Received
Background 01 @2'	Y208519-01	Soil	August 22, 2022 10:55	08/22/2022 15:45
Background 02 @2'	Y208519-02	Soil	August 22, 2022 11:00	08/22/2022 15:45

Origins Laboratory, Inc.



*The results in this report apply to the samples analyzed in accordance with the chain of custody document. This analytical report must be reproduced in its entirety.*





Eagle Environmental Consulting, Inc.

8000 W 44th Ave

Wheat Ridge CO 80033

Martin C Eckert III

Project Number: [none]

Project: Civitas - State Antelope 14-21-16 XRLNB

Origins Laboratory

F-012207-01-R1  
Effective Date: 01/09/12

## Sample Receipt Checklist

Origins Work Order: 4208519

Client: Eagle

Client Project ID: State Antelope 14-21-16 XRLNB

Checklist Completed by: MS

Shipped Via: HD

Date/time completed: 8/24/2022

(UPS, FedEx, Hand Delivered, Pick-up, etc.)

Airbill #: N/A

Matrix(s) Received: (Check all that apply): X Soil/Solid      Water      Other:     

Cooler Number/Temperature: 1 / 4.1 °C      /      °C      /      °C (Describe)

Thermometer ID: T004

Requirement Description	Yes	No	N/A	Comments (if any)
If samples require cooling, was the temperature between 0°C to ≤ 6°C <sup>(1)</sup> ?	<u>X</u>			
Is there ice present (document if blue ice is used)	<u>X</u>			
Are custody seals present on cooler? (if so, document in comments if they are signed and dated, broken or intact)		<u>X</u>		
Are custody seals present on each sample container? (if so, document in comments if they are signed and dated, broken or intact)		<u>T</u>		
Were all samples received intact <sup>(1)</sup> ?	<u>X</u>			
Was adequate sample volume provided <sup>(1)</sup> ?	<u>X</u>			
Are short holding time analytes or samples with HTs due within 48 hours present <sup>(1)</sup> ?		<u>X</u>		
Is a chain-of-custody (COC) present and filled out completely <sup>(1)</sup> ?	<u>X</u>			
Does the COC agree with the number and type of sample bottles received <sup>(1)</sup> ?	<u>X</u>			
Do the sample IDs on the bottle labels match the COC <sup>(1)</sup> ?	<u>X</u>			
Is the COC properly relinquished by the client with date and time recorded <sup>(1)</sup> ?	<u>X</u>			
For volatiles in water — is there headspace (> ¼ inch bubble) present? If yes, contact client and note in narrative.			<u>X</u>	
Are samples preserved that require preservation and was it checked <sup>(1)</sup> ? (note ID of confirmation instrument used in comments) / (preservation is not confirmed for subcontracted analyses in order to insure sample integrity)/(pH < 2 for samples preserved with HNO <sub>3</sub> , HCL, H <sub>2</sub> SO <sub>4</sub> ) / (pH > 10 for samples preserved with NaAsO <sub>2</sub> +NaOH, ZnAc+NaOH)			<u>X</u>	
Additional Comments (if any):				

<sup>(1)</sup>If NO, then contact the client before proceeding with analysis and note date/time and person contacted as well as the corrective action to in the additional comments (above) and the case narrative.

Reviewed by (Project Manager)

8/23/2022  
Date/Time Reviewed

Origins Laboratory, Inc.

*Jefe Pellegrini*

The results in this report apply to the samples analyzed in accordance with the chain of custody document. This analytical report must be reproduced in its entirety.

Eagle Environmental Consulting, Inc.  
8000 W 44th Ave  
Wheat Ridge CO 80033

Martin C Eckert III  
Project Number: [none]  
Project: Civitas - State Antelope 14-21-16 XRLNB

**Backaround 01 @2'**  
**8/22/2022 10:55:00AM**

Analyte	Result	Reporting Limit	Units	Dilution	Batch	Analyst	Prepared	Analyzed	Notes
---------	--------	--------------------	-------	----------	-------	---------	----------	----------	-------

**Origins Laboratory, Inc.**  
**Y208519-01 (Soil)**

**Metals by Saturated Paste by EPA 6010**

Calcium	0.884	0.499	meq/L	10	[CALC]	KAP	08/23/2022	08/24/2022
Magnesium	ND	0.823	"	"	"	KAP	"	"
Sodium	ND	0.435	"	"	"	KAP	"	"

**pH in Soil by 9045D**

pH	8.16		pH Units	1	B2H2320	AJB	08/23/2022	08/24/2022
----	------	--	----------	---	---------	-----	------------	------------

**SAR by 20B Saturated Paste**

SAR	0.434		SAR	1	B2H2319	KAP	08/23/2022	08/24/2022
-----	-------	--	-----	---	---------	-----	------------	------------

**Table 915 metals by EPA 6020B**

Arsenic	2.17	0.0917	mg/kg	5	B2H2315	CNG	08/23/2022	08/24/2022
Barium	73.3	9.17	"	"	"	CNG	"	"

Origins Laboratory, Inc.



*The results in this report apply to the samples analyzed in accordance with the chain of custody document. This analytical report must be reproduced in its entirety.*

Eagle Environmental Consulting, Inc.  
8000 W 44th Ave  
Wheat Ridge CO 80033

Martin C Eckert III  
Project Number: [none]  
Project: Civitas - State Antelope 14-21-16 XRLNB

**Backaround 02 @2'**  
**8/22/2022 11:00:00AM**

Analyte	Result	Reporting Limit	Units	Dilution	Batch	Analyst	Prepared	Analyzed	Notes
---------	--------	--------------------	-------	----------	-------	---------	----------	----------	-------

**Origins Laboratory, Inc.**  
**Y208519-02 (Soil)**

**Metals by Saturated Paste by EPA 6010**

Calcium	0.869	0.499	meq/L	10	[CALC]	KAP	08/23/2022	08/24/2022
Magnesium	ND	0.823	"	"	"	KAP	"	"
Sodium	ND	0.435	"	"	"	KAP	"	"

**pH in Soil by 9045D**

pH	8.19		pH Units	1	B2H2320	AJB	08/23/2022	08/24/2022
----	------	--	----------	---	---------	-----	------------	------------

**SAR by 20B Saturated Paste**

SAR	0.501		SAR	1	B2H2319	KAP	08/23/2022	08/24/2022
-----	-------	--	-----	---	---------	-----	------------	------------

**Table 915 metals by EPA 6020B**

Arsenic	3.21	0.0911	mg/kg	5	B2H2315	CNG	08/23/2022	08/24/2022
Barium	102	9.11	"	"	"	CNG	"	"

Origins Laboratory, Inc.



*The results in this report apply to the samples analyzed in accordance with the chain of custody document. This analytical report must be reproduced in its entirety.*

Eagle Environmental Consulting, Inc.  
8000 W 44th Ave  
Wheat Ridge CO 80033

Martin C Eckert III  
Project Number: [none]  
Project: Civitas - State Antelope 14-21-16 XRLNB

## Metals by SM 3500 Series Methods - Quality Control

### Origins Laboratory, Inc.

Analyte	Result	Reporting Limit	Units	Spike Level	Source Result	%REC	%REC Limits	RPD	RPD Limit	Notes
---------	--------	-----------------	-------	-------------	---------------	------	-------------	-----	-----------	-------

#### Batch B2H2315 - Default Prep Metals

##### Blank (B2H2315-BLK1)

Prepared: 08/23/2022 Analyzed: 08/24/2022

Arsenic	ND	0.000100	mg/kg							U
Barium	ND	0.0100	"							U
Cadmium	ND	0.000100	"							U
Copper	ND	0.0100	"							U
Lead	ND	0.0100	"							U
Nickel	ND	0.0100	"							U
Selenium	ND	0.000100	"							U
Silver	ND	0.000100	"							U
Zinc	ND	0.100	"							U

##### LCS (B2H2315-BS1)

Prepared: 08/23/2022 Analyzed: 08/24/2022

Arsenic	0.0524	0.000100	mg/kg	0.0500		105	80-120
Barium	5.37	0.0100	"	5.00		107	80-120
Cadmium	0.0506	0.000100	"	0.0500		101	80-120
Copper	0.559	0.0100	"	0.500		112	80-120
Lead	0.0529	0.0100	"	0.0500		106	80-120
Nickel	0.0546	0.0100	"	0.0500		109	80-120
Selenium	0.0521	0.000100	"	0.0500		104	80-120
Silver	0.0503	0.000100	"	0.0500		101	80-120
Zinc	0.509	0.100	"	0.500		102	80-120

##### Matrix Spike (B2H2315-MS1)

Source: Y208514-01

Prepared: 08/23/2022 Analyzed: 08/24/2022

Arsenic	11.3	0.0754	mg/kg	7.54	3.88	97.8	75-125
Barium	881	7.54	"	754	295	77.9	75-125
Cadmium	7.52	0.0754	"	7.54	0.187	97.3	75-125
Copper	85.6	7.54	"	75.4	9.86	100	75-125
Lead	16.9	7.54	"	7.54	9.60	96.5	75-125

Origins Laboratory, Inc.



The results in this report apply to the samples analyzed in accordance with the chain of custody document. This analytical report must be reproduced in its entirety.

Eagle Environmental Consulting, Inc.  
8000 W 44th Ave  
Wheat Ridge CO 80033

Martin C Eckert III  
Project Number: [none]  
Project: Civitas - State Antelope 14-21-16 XRLNB

## Metals by SM 3500 Series Methods - Quality Control

### Origins Laboratory, Inc.

Analyte	Result	Reporting Limit	Units	Spike Level	Source Result	%REC	%REC Limits	RPD	RPD Limit	Notes
---------	--------	-----------------	-------	-------------	---------------	------	-------------	-----	-----------	-------

#### Batch B2H2315 - Default Prep Metals

Matrix Spike (B2H2315-MS1)		Source: Y208514-01			Prepared: 08/23/2022 Analyzed: 08/24/2022					
Nickel	17.6	7.54	mg/kg	7.54	11.0	87.9	75-125			
Selenium	7.48	0.0754	"	7.54	0.809	88.6	75-125			
Silver	7.21	0.0754	"	7.54	0.0172	95.4	75-125			
Zinc	107	75.4	"	75.4	38.3	90.7	75-125			
Matrix Spike Dup (B2H2315-MSD1)		Source: Y208514-01			Prepared: 08/23/2022 Analyzed: 08/24/2022					
Arsenic	13.1	0.0912	mg/kg	9.12	3.88	101	75-125	15.0	20	
Barium	1040	9.12	"	912	295	81.7	75-125	16.5	20	
Cadmium	9.13	0.0912	"	9.12	0.187	98.1	75-125	19.4	20	
Copper	103	9.12	"	91.2	9.86	102	75-125	18.6	20	
Lead	18.3	9.12	"	9.12	9.60	96.0	75-125	8.37	20	
Nickel	19.7	9.12	"	9.12	11.0	95.5	75-125	11.2	20	
Selenium	9.37	0.0912	"	9.12	0.809	93.9	75-125	22.3	20	QR-02
Silver	8.88	0.0912	"	9.12	0.0172	97.2	75-125	20.7	20	QR-02
Zinc	127	91.2	"	91.2	38.3	97.1	75-125	17.3	20	

Origins Laboratory, Inc.



The results in this report apply to the samples analyzed in accordance with the chain of custody document. This analytical report must be reproduced in its entirety.



Eagle Environmental Consulting, Inc.  
8000 W 44th Ave  
Wheat Ridge CO 80033

Martin C Eckert III  
Project Number: [none]  
Project: Civitas - State Antelope 14-21-16 XRLNB

## Classical Chemistry Parameters - Quality Control Origins Laboratory, Inc.

Analyte	Result	Reporting Limit	Units	Spike Level	Source Result	%REC	%REC Limits	RPD	RPD Limit	Notes
<b>Batch B2H2319 - Default Prep Metals</b>										
<b>Blank (B2H2319-BLK1)</b>					Prepared: 08/23/2022 Analyzed: 08/24/2022					
Calcium PPM	ND	10.0	mg/L							U
SAR	0.00		SAR							U
Magnesium PPM	ND	10.0	mg/L							U
Sodium PPM	ND	10.0	"							U
<b>Duplicate (B2H2319-DUP1)</b>					<b>Source: Y208492-01</b>		Prepared: 08/23/2022 Analyzed: 08/24/2022			
Calcium PPM	581	10.0	mg/L		612			5.26	50	
SAR	0.00		SAR		0.846			200	200	U
Magnesium PPM	91.9	10.0	mg/L		102			9.96	50	
Sodium PPM	88.9	10.0	"		85.7			3.62	50	

Origins Laboratory, Inc.



The results in this report apply to the samples analyzed in accordance with the chain of custody document. This analytical report must be reproduced in its entirety.

Eagle Environmental Consulting, Inc.  
8000 W 44th Ave  
Wheat Ridge CO 80033

Martin C Eckert III  
Project Number: [none]  
Project: Civitas - State Antelope 14-21-16 XRLNB

**Saturated Paste - Quality Control**  
**Origins Laboratory, Inc.**

Analyte	Result	Reporting Limit	Units	Spike Level	Source Result	%REC	%REC Limits	RPD	RPD Limit	Notes
<b>Batch B2H2320 - NO PREP</b>										
<b>Blank (B2H2320-BLK1)</b>					Prepared: 08/23/2022 Analyzed: 08/24/2022					
pH	0.00		pH Units							
<b>Duplicate (B2H2320-DUP1)</b>					Source: Y208492-01 Prepared: 08/23/2022 Analyzed: 08/24/2022					
pH	7.83		pH Units		7.65			2.33	25	

Origins Laboratory, Inc.



*The results in this report apply to the samples analyzed in accordance with the chain of custody document. This analytical report must be reproduced in its entirety.*

Eagle Environmental Consulting, Inc.

8000 W 44th Ave

Wheat Ridge CO 80033

Martin C Eckert III

Project Number: [none]

Project: Civitas - State Antelope 14-21-16 XRLNB

### Notes and Definitions

U Sample is Non-Detect.

QR-02 The RPD result exceeded the QC control limits; however, both percent recoveries were acceptable. Sample results for the QC batch were accepted based on percent recoveries and completeness of QC data.

ND Analyte NOT DETECTED at or above the reporting limit

RPD Relative Percent Difference

All soil results are reported at a wet weight basis.

Origins Laboratory, Inc.



*The results in this report apply to the samples analyzed in accordance with the chain of custody document. This analytical report must be reproduced in its entirety.*



September 12, 2022

Eagle Environmental Consulting, Inc.

Martin C Eckert III

8000 W 44th Ave

Wheat Ridge CO 80033

**Project Name - Civitas - State Antelope 14-21-16 XRLNB**      **Project Number - [none]**

Attached are your analytical results for Civitas - State Antelope 14-21-16 XRLNB received by Origins Laboratory, Inc. August 22, 2022. This project is associated with Origins project number Y208521-01.

The analytical results in the following report were analyzed under the guidelines of EPA Methods. These methods are identified as follows; "SW" are defined in SW-846, "EPA" are defined in 40CFR part 136 and "SM" are defined in the most current revision of Standard Methods For the Examination of Water and Wastewater.

The analytical results apply specifically to the samples and analyses specified per the attached Chain of Custody. As such, this report shall not be reproduced except in full, without the written approval of Origin's laboratory.

Unless otherwise noted, the analytical results for all soil samples are reported on a wet weight basis. All analytical analyses were performed under NELAP guidelines unless noted by a data qualifier.

Any holding time exceedances, deviations from the method specifications or deviations from Origins Laboratory's Standard Operating Procedures are outlined in the case narrative.

Thank you for selecting Origins for your analytical needs. Please contact us with any questions concerning this report, or if we can help with anything at all.

Origins Laboratory, Inc.  
303.433.1322  
o-squad@oelabinc.com



1725 Elk Place, Denver, CO 80211 | Phone: 303.433.1322 | Fax: 303.265.9645

Eagle Environmental Consulting, Inc.

8000 W 44th Ave

Wheat Ridge CO 80033

Martin C Eckert III

Project Number: [none]

Project: Civitas - State Antelope 14-21-16 XRLNB

## CROSS REFERENCE REPORT

Sample ID	Laboratory ID	Matrix	Date Sampled	Date Received
EX-SS-01@2'	Y208521-01	Soil	August 22, 2022 10:30	08/22/2022 15:45
EX-SS-02@2'	Y208521-02	Soil	August 22, 2022 10:35	08/22/2022 15:45
EX-SS-03@2'	Y208521-03	Soil	August 22, 2022 10:40	08/22/2022 15:45
EX-SS-04@2'	Y208521-04	Soil	August 22, 2022 10:45	08/22/2022 15:45
EX-FS-01@2.5'	Y208521-05	Soil	August 22, 2022 10:50	08/22/2022 15:45

Origins Laboratory, Inc.



*The results in this report apply to the samples analyzed in accordance with the chain of custody document. This analytical report must be reproduced in its entirety.*

Martin C Eckert III  
Project Number: [none]  
Project: Civitas - State Antelope 14-21-16 XRLNB

**ORIGINS**  
LABORATORY, INC

www.originslaboratory.com

page 1 of 1

1208521

Project Manager: Martin Eckert III

Project Name: State Antelope 14-21-16 XRL NB

Project Number:                     

Samples Collected By: RL

Client: Eagle Environmental Consulting

Address: 8000 W 44th Ave  
Wheat Ridge, CO 80033

Telephone Number: 303-433-0479

Email Address: ncc30eagle-enviro.com

[illegible]

Date Results Needed @ Civil 4.5

Temp Received- 4.1'

$\oplus \beta \parallel$  to Jacob

Origins Laboratory, Inc.

Byron

*The results in this report apply to the samples analyzed in accordance with the chain of custody document. This analytical report must be reproduced in its entirety.*



Eagle Environmental Consulting, Inc.  
8000 W 44th Ave  
Wheat Ridge CO 80033

Martin C Eckert III  
Project Number: [none]  
Project: Civitas - State Antelope 14-21-16 XRLNB

Origins Laboratory

F-012207-01-R1  
Effective Date: 01/09/12

## Sample Receipt Checklist

Origins Work Order: 4208521

Client: Eagle  
Client Project ID: State Antelope 14-21-16 XRLNB

Checklist Completed by: LT  
Date/time completed: 8/22/2022

Shipped Via: HD  
(UPS, FedEx, Hand Delivered, Pick-up, etc.)  
Airbill #: N/A

Matrix(s) Received: (Check all that apply): ☒ Soil/Solid ☐ Water ☐ Other: \_\_\_\_\_  
Cooler Number/Temperature: 1 / 4.1 °C 1 / \_\_\_\_\_ °C 1 / \_\_\_\_\_ °C (Describe)  
Thermometer ID: T004

Requirement Description	Yes	No	N/A	Comments (if any)
If samples require cooling, was the temperature between 0°C to ≤ 6°C <sup>(1)</sup> ?	<input checked="" type="checkbox"/>			
Is there ice present (document if blue ice is used)	<input checked="" type="checkbox"/>			
Are custody seals present on cooler? (if so, document in comments if they are signed and dated, broken or intact)		<input checked="" type="checkbox"/>		
Are custody seals present on each sample container? (if so, document in comments if they are signed and dated, broken or intact)		<input checked="" type="checkbox"/>		
Were all samples received intact <sup>(1)</sup> ?	<input checked="" type="checkbox"/>			
Was adequate sample volume provided <sup>(1)</sup> ?	<input checked="" type="checkbox"/>			
Are short holding time analytes or samples with HTs due within 48 hours present <sup>(1)</sup> ?		<input checked="" type="checkbox"/>		
Is a chain-of-custody (COC) present and filled out completely <sup>(1)</sup> ?	<input checked="" type="checkbox"/>			
Does the COC agree with the number and type of sample bottles received <sup>(1)</sup> ?	<input checked="" type="checkbox"/>			
Do the sample IDs on the bottle labels match the COC <sup>(1)</sup> ?	<input checked="" type="checkbox"/>			
Is the COC properly relinquished by the client with date and time recorded <sup>(1)</sup> ?	<input checked="" type="checkbox"/>			
For volatiles in water — is there headspace (> ¼ inch bubble) present? If yes, contact client and note in narrative.			<input checked="" type="checkbox"/>	
Are samples preserved that require preservation and was it checked <sup>(1)</sup> ? (note ID of confirmation instrument used in comments) / (preservation is not confirmed for subcontracted analyses in order to insure sample integrity)/pH < 2 for samples preserved with HNO <sub>3</sub> , HCL, H <sub>2</sub> SO <sub>4</sub> / (pH > 10 for samples preserved with NaAsO <sub>2</sub> +NaOH, ZnAc+NaOH)			<input checked="" type="checkbox"/>	
Additional Comments (if any):				

<sup>(1)</sup>If NO, then contact the client before proceeding with analysis and note date/time and person contacted as well as the corrective action to in the additional comments (above) and the case narrative.

Reviewed by: JB (Project Manager)

8/23/2022  
Date/Time Reviewed

Origins Laboratory, Inc.

*JB*

The results in this report apply to the samples analyzed in accordance with the chain of custody document. This analytical report must be reproduced in its entirety.

Eagle Environmental Consulting, Inc.  
8000 W 44th Ave  
Wheat Ridge CO 80033

Martin C Eckert III  
Project Number: [none]  
Project: Civitas - State Antelope 14-21-16 XRLNB

EX-SS-01@2'

8/22/2022 10:30:00AM

Analyte	Result	Min Detection Limit	Reporting Limit	Units	Dilution	Batch	Prepared	Analyzed	Notes
---------	--------	---------------------	-----------------	-------	----------	-------	----------	----------	-------

Origins Laboratory, Inc.  
Y208521-01 (Soil)

## DRO/ORO by EPA 8015D

Diesel (C10-C28)	ND	25.0	mg/kg	1	B2H2311	08/23/2022	08/31/2022	U
Residual Range Organics (C28-C40)	ND	100	"	"	"	"	"	U

Surrogate: o-Terphenyl 101 % 50-150 " " "

## GBTEX+TMBs by 8260D

1,2,4-Trimethylbenzene	ND	0.00200	mg/kg	1	B2H2309	08/23/2022	08/26/2022	U
1,3,5-Trimethylbenzene	ND	0.00200	"	"	"	"	"	U
Benzene	ND	0.00200	"	"	"	"	"	U
Ethylbenzene	ND	0.00200	"	"	"	"	"	U
Toluene	ND	0.00200	"	"	"	"	"	U
Xylenes, total	ND	0.00200	"	"	"	"	"	U
Gasoline Range Hydrocarbons	ND	0.200	"	"	"	"	"	U

Surrogate: 1,2-Dichloroethane-d4 114 % 70-130 " " "  
Surrogate: Toluene-d8 94.6 % 70-130 " " "  
Surrogate: 4-Bromofluorobenzene 95.5 % 70-130 " " "

## Metals by Saturated Paste by EPA 6010

Origins Laboratory, Inc.



The results in this report apply to the samples analyzed in accordance with the chain of custody document. This analytical report must be reproduced in its entirety.

Eagle Environmental Consulting, Inc.  
8000 W 44th Ave  
Wheat Ridge CO 80033

Martin C Eckert III  
Project Number: [none]  
Project: Civitas - State Antelope 14-21-16 XRLNB

EX-SS-01@2'

8/22/2022 10:30:00AM

Analyte	Result	Min Detection Limit	Reporting Limit	Units	Dilution	Batch	Prepared	Analyzed	Notes
---------	--------	---------------------	-----------------	-------	----------	-------	----------	----------	-------

Origins Laboratory, Inc.  
Y208521-01 (Soil)

## Metals by Saturated Paste by EPA 6010

Calcium	1.08	0.499	meq/L	10	[CALC]	08/23/2022	08/24/2022
Magnesium	ND	0.823	"	"	"	"	"
Sodium	ND	0.435	"	"	"	"	"

## PAH by 8270D SIM

1-Methylnaphthalene	ND	0.000364	0.00067	mg/Kg	1	L634005	08/25/2022	08/26/2022
2-Methylnaphthalene	ND	0.000645	0.00067	"	"	"	"	"
Acenaphthene	ND	0.000304	0.00067	"	"	"	"	"
Anthracene	ND	0.000334	0.00067	"	"	"	"	"
Benzo(a)anthracene	ND	0.000493	0.00067	"	"	"	"	"
Benzo(a)pyrene	ND	0.000468	0.00067	"	"	"	"	"
Benzo(b)fluoranthene	ND	0.000585	0.00067	"	"	"	"	"
Benzo(k)fluoranthene	ND	0.000437	0.00067	"	"	"	"	"
Chrysene	ND	0.000624	0.00067	"	"	"	"	"
Dibenz(a,h)anthracene	ND	0.000614	0.00067	"	"	"	"	"
Fluoranthene	ND	0.000394	0.00067	"	"	"	"	"
Fluorene	ND	0.000286	0.00067	"	"	"	"	"
Indeno(1,2,3-cd)pyrene	ND	0.000627	0.00067	"	"	"	"	"
Naphthalene	ND	0.000484	0.00067	"	"	"	"	"
Pyrene	ND	0.000643	0.00067	"	"	"	"	"

Origins Laboratory, Inc.



The results in this report apply to the samples analyzed in accordance with the chain of custody document. This analytical report must be reproduced in its entirety.

Eagle Environmental Consulting, Inc.  
8000 W 44th Ave  
Wheat Ridge CO 80033

Martin C Eckert III  
Project Number: [none]  
Project: Civitas - State Antelope 14-21-16 XRLNB

EX-SS-01@2'

8/22/2022 10:30:00AM

Analyte	Result	Min Detection Limit	Reporting Limit	Units	Dilution	Batch	Prepared	Analyzed	Notes
---------	--------	---------------------	-----------------	-------	----------	-------	----------	----------	-------

Waypoint Analytical, LLC.  
Y208521-01 (Soil)

## PAH by 8270D SIM

Surrogate: 2-Fluorobiphenyl	57.4 %	33-115	L6340 05	08/25/2022	08/26/2022
Surrogate: 4-Terphenyl-d14	75.4 %	33-122	"	"	"
Surrogate: Nitrobenzene-d5	64.1 %	29-110	"	"	"

## pH in Soil by 9045D

pH	8.06	pH Units	1	B2H2320	08/23/2022	08/24/2022
----	------	----------	---	---------	------------	------------

## SAR by 20B Saturated Paste

SAR	0.145	SAR	1	B2H2319	08/23/2022	08/24/2022
-----	-------	-----	---	---------	------------	------------

## Specific Conductance Mod. 9050A

Specific Conductance (EC)	0.178	0.00500	mmhos/cm	1	B2H2320	08/23/2022	08/24/2022
---------------------------	-------	---------	----------	---	---------	------------	------------

## Table 915 metals by EPA 6020B

Arsenic	1.93	0.0784	mg/kg	5	B2H2315	08/23/2022	08/24/2022
Barium	79.4	7.84	"	"	"	"	"

Origins Laboratory, Inc.



The results in this report apply to the samples analyzed in accordance with the chain of custody document. This analytical report must be reproduced in its entirety.

Eagle Environmental Consulting, Inc.  
8000 W 44th Ave  
Wheat Ridge CO 80033

Martin C Eckert III  
Project Number: [none]  
Project: Civitas - State Antelope 14-21-16 XRLNB

EX-SS-02@2'

8/22/2022 10:35:00AM

Analyte	Result	Min Detection Limit	Reporting Limit	Units	Dilution	Batch	Prepared	Analyzed	Notes
---------	--------	---------------------	-----------------	-------	----------	-------	----------	----------	-------

Origins Laboratory, Inc.  
Y208521-02 (Soil)

## DRO/ORO by EPA 8015D

Diesel (C10-C28)	ND	25.0	mg/kg	1	B2H2311	08/23/2022	08/31/2022	U
Residual Range Organics (C28-C40)	ND	100	"	"	"	"	"	U

Surrogate: o-Terphenyl	112 %	50-150	"	"	"
------------------------	-------	--------	---	---	---

## GBTEX+TMBs by 8260D

1,2,4-Trimethylbenzene	ND	0.00200	mg/kg	1	B2H2309	08/23/2022	08/26/2022	U
1,3,5-Trimethylbenzene	ND	0.00200	"	"	"	"	"	U
Benzene	ND	0.00200	"	"	"	"	"	U
Ethylbenzene	ND	0.00200	"	"	"	"	"	U
Toluene	ND	0.00200	"	"	"	"	"	U
Xylenes, total	ND	0.00200	"	"	"	"	"	U
Gasoline Range Hydrocarbons	ND	0.200	"	"	"	"	"	U

Surrogate: 1,2-Dichloroethane-d4	117 %	70-130	"	"	"
Surrogate: Toluene-d8	95.7 %	70-130	"	"	"
Surrogate: 4-Bromofluorobenzene	93.6 %	70-130	"	"	"

## Metals by Saturated Paste by EPA 6010

Origins Laboratory, Inc.



The results in this report apply to the samples analyzed in accordance with the chain of custody document. This analytical report must be reproduced in its entirety.

Eagle Environmental Consulting, Inc.  
8000 W 44th Ave  
Wheat Ridge CO 80033

Martin C Eckert III  
Project Number: [none]  
Project: Civitas - State Antelope 14-21-16 XRLNB

EX-SS-02@2'

8/22/2022 10:35:00AM

Analyte	Result	Min Detection Limit	Reporting Limit	Units	Dilution	Batch	Prepared	Analyzed	Notes
---------	--------	---------------------	-----------------	-------	----------	-------	----------	----------	-------

Origins Laboratory, Inc.  
Y208521-02 (Soil)

## Metals by Saturated Paste by EPA 6010

Calcium	1.12	0.499	meq/L	10	[CALC]	08/23/2022	08/24/2022
Magnesium	ND	0.823	"	"	"	"	"
Sodium	ND	0.435	"	"	"	"	"

## PAH by 8270D SIM

1-Methylnaphthalene	ND	0.000364	0.00067	mg/Kg	1	L634005	08/25/2022	08/26/2022
2-Methylnaphthalene	ND	0.000645	0.00067	"	"	"	"	"
Acenaphthene	ND	0.000304	0.00067	"	"	"	"	"
Anthracene	ND	0.000334	0.00067	"	"	"	"	"
Benzo(a)anthracene	ND	0.000493	0.00067	"	"	"	"	"
Benzo(a)pyrene	ND	0.000468	0.00067	"	"	"	"	"
Benzo(b)fluoranthene	ND	0.000585	0.00067	"	"	"	"	"
Benzo(k)fluoranthene	ND	0.000437	0.00067	"	"	"	"	"
Chrysene	ND	0.000624	0.00067	"	"	"	"	"
Dibenz(a,h)anthracene	ND	0.000614	0.00067	"	"	"	"	"
Fluoranthene	ND	0.000394	0.00067	"	"	"	"	"
Fluorene	ND	0.000286	0.00067	"	"	"	"	"
Indeno(1,2,3-cd)pyrene	ND	0.000627	0.00067	"	"	"	"	"
Naphthalene	ND	0.000484	0.00067	"	"	"	"	"
Pyrene	ND	0.000643	0.00067	"	"	"	"	"

Origins Laboratory, Inc.



The results in this report apply to the samples analyzed in accordance with the chain of custody document. This analytical report must be reproduced in its entirety.



Eagle Environmental Consulting, Inc.  
8000 W 44th Ave  
Wheat Ridge CO 80033

Martin C Eckert III  
Project Number: [none]  
Project: Civitas - State Antelope 14-21-16 XRLNB

EX-SS-02@2'

8/22/2022 10:35:00AM

Analyte	Result	Min Detection Limit	Reporting Limit	Units	Dilution	Batch	Prepared	Analyzed	Notes
---------	--------	---------------------	-----------------	-------	----------	-------	----------	----------	-------

Waypoint Analytical, LLC.  
Y208521-02 (Soil)

## PAH by 8270D SIM

Surrogate: 2-Fluorobiphenyl	57.5 %	33-115	L6340 05	08/25/2022	08/26/2022
Surrogate: 4-Terphenyl-d14	70.8 %	33-122	"	"	"
Surrogate: Nitrobenzene-d5	63.7 %	29-110	"	"	"

## pH in Soil by 9045D

pH	8.05	pH Units	1	B2H2320	08/23/2022	08/24/2022
----	------	----------	---	---------	------------	------------

## SAR by 20B Saturated Paste

SAR	0.175	SAR	1	B2H2319	08/23/2022	08/24/2022
-----	-------	-----	---	---------	------------	------------

## Specific Conductance Mod. 9050A

Specific Conductance (EC)	0.186	0.00500	mmhos/cm	1	B2H2320	08/23/2022	08/24/2022
---------------------------	-------	---------	----------	---	---------	------------	------------

## Table 915 metals by EPA 6020B

Arsenic	2.10	0.0850	mg/kg	5	B2H2315	08/23/2022	08/24/2022
Barium	106	8.50	"	"	"	"	"

Origins Laboratory, Inc.



The results in this report apply to the samples analyzed in accordance with the chain of custody document. This analytical report must be reproduced in its entirety.

Eagle Environmental Consulting, Inc.  
8000 W 44th Ave  
Wheat Ridge CO 80033

Martin C Eckert III  
Project Number: [none]  
Project: Civitas - State Antelope 14-21-16 XRLNB

EX-SS-03@2'

8/22/2022 10:40:00AM

Analyte	Result	Min Detection Limit	Reporting Limit	Units	Dilution	Batch	Prepared	Analyzed	Notes
---------	--------	---------------------	-----------------	-------	----------	-------	----------	----------	-------

Origins Laboratory, Inc.  
Y208521-03 (Soil)

## DRO/ORO by EPA 8015D

Diesel (C10-C28)	ND	25.0	mg/kg	1	B2H2311	08/23/2022	08/31/2022	U
Residual Range Organics (C28-C40)	ND	100	"	"	"	"	"	U

Surrogate: o-Terphenyl 108 % 50-150 " " "

## GBTEX+TMBs by 8260D

1,2,4-Trimethylbenzene	ND	0.00200	mg/kg	1	B2H2309	08/23/2022	08/26/2022	U
1,3,5-Trimethylbenzene	ND	0.00200	"	"	"	"	"	U
Benzene	ND	0.00200	"	"	"	"	"	U
Ethylbenzene	ND	0.00200	"	"	"	"	"	U
Toluene	ND	0.00200	"	"	"	"	"	U
Xylenes, total	ND	0.00200	"	"	"	"	"	U
Gasoline Range Hydrocarbons	ND	0.200	"	"	"	"	"	U

Surrogate: 1,2-Dichloroethane-d4 116 % 70-130 " " "  
Surrogate: Toluene-d8 91.9 % 70-130 " " "  
Surrogate: 4-Bromofluorobenzene 97.1 % 70-130 " " "

## Metals by Saturated Paste by EPA 6010

Origins Laboratory, Inc.



The results in this report apply to the samples analyzed in accordance with the chain of custody document. This analytical report must be reproduced in its entirety.

Eagle Environmental Consulting, Inc.  
8000 W 44th Ave  
Wheat Ridge CO 80033

Martin C Eckert III  
Project Number: [none]  
Project: Civitas - State Antelope 14-21-16 XRLNB

EX-SS-03@2'

8/22/2022 10:40:00AM

Analyte	Result	Min Detection Limit	Reporting Limit	Units	Dilution	Batch	Prepared	Analyzed	Notes
---------	--------	---------------------	-----------------	-------	----------	-------	----------	----------	-------

Origins Laboratory, Inc.  
Y208521-03 (Soil)

## Metals by Saturated Paste by EPA 6010

Calcium	0.951	0.499	meq/L	10	[CALC]	08/23/2022	08/24/2022
Magnesium	ND	0.823	"	"	"	"	"
Sodium	ND	0.435	"	"	"	"	"

## PAH by 8270D SIM

1-Methylnaphthalene	ND	0.000364	0.00067	mg/Kg	1	L634005	08/25/2022	08/26/2022
2-Methylnaphthalene	ND	0.000645	0.00067	"	"	"	"	"
Acenaphthene	ND	0.000304	0.00067	"	"	"	"	"
Anthracene	ND	0.000334	0.00067	"	"	"	"	"
Benzo(a)anthracene	ND	0.000493	0.00067	"	"	"	"	"
Benzo(a)pyrene	ND	0.000468	0.00067	"	"	"	"	"
Benzo(b)fluoranthene	ND	0.000585	0.00067	"	"	"	"	"
Benzo(k)fluoranthene	ND	0.000437	0.00067	"	"	"	"	"
Chrysene	ND	0.000624	0.00067	"	"	"	"	"
Dibenz(a,h)anthracene	ND	0.000614	0.00067	"	"	"	"	"
Fluoranthene	ND	0.000394	0.00067	"	"	"	"	"
Fluorene	ND	0.000286	0.00067	"	"	"	"	"
Indeno(1,2,3-cd)pyrene	ND	0.000627	0.00067	"	"	"	"	"
Naphthalene	ND	0.000484	0.00067	"	"	"	"	"
Pyrene	ND	0.000643	0.00067	"	"	"	"	"

Origins Laboratory, Inc.



The results in this report apply to the samples analyzed in accordance with the chain of custody document. This analytical report must be reproduced in its entirety.

Eagle Environmental Consulting, Inc.  
8000 W 44th Ave  
Wheat Ridge CO 80033

Martin C Eckert III  
Project Number: [none]  
Project: Civitas - State Antelope 14-21-16 XRLNB

EX-SS-03@2'

8/22/2022 10:40:00AM

Analyte	Result	Min Detection Limit	Reporting Limit	Units	Dilution	Batch	Prepared	Analyzed	Notes
---------	--------	---------------------	-----------------	-------	----------	-------	----------	----------	-------

Waypoint Analytical, LLC.  
Y208521-03 (Soil)

## PAH by 8270D SIM

Surrogate: 2-Fluorobiphenyl	57.4 %	33-115	L6340 05	08/25/2022	08/26/2022
Surrogate: 4-Terphenyl-d14	65.3 %	33-122	"	"	"
Surrogate: Nitrobenzene-d5	57.4 %	29-110	"	"	"

## pH in Soil by 9045D

pH	8.10	pH Units	1	B2H2320	08/23/2022	08/24/2022
----	------	----------	---	---------	------------	------------

## SAR by 20B Saturated Paste

SAR	0.212	SAR	1	B2H2319	08/23/2022	08/24/2022
-----	-------	-----	---	---------	------------	------------

## Specific Conductance Mod. 9050A

Specific Conductance (EC)	0.166	0.00500	mmhos/cm	1	B2H2320	08/23/2022	08/24/2022
---------------------------	-------	---------	----------	---	---------	------------	------------

## Table 915 metals by EPA 6020B

Arsenic	2.27	0.0930	mg/kg	5	B2H2315	08/23/2022	08/24/2022
Barium	232	9.30	"	"	"	"	"

Origins Laboratory, Inc.



The results in this report apply to the samples analyzed in accordance with the chain of custody document. This analytical report must be reproduced in its entirety.

Eagle Environmental Consulting, Inc.  
8000 W 44th Ave  
Wheat Ridge CO 80033

Martin C Eckert III  
Project Number: [none]  
Project: Civitas - State Antelope 14-21-16 XRLNB

EX-SS-04@2'

8/22/2022 10:45:00AM

Analyte	Result	Min Detection Limit	Reporting Limit	Units	Dilution	Batch	Prepared	Analyzed	Notes
---------	--------	---------------------	-----------------	-------	----------	-------	----------	----------	-------

Origins Laboratory, Inc.  
Y208521-04 (Soil)

## DRO/ORO by EPA 8015D

Diesel (C10-C28)	ND	25.0	mg/kg	1	B2H2311	08/23/2022	08/31/2022	U
Residual Range Organics (C28-C40)	ND	100	"	"	"	"	"	U

Surrogate: o-Terphenyl	116 %	50-150	"	"	"
------------------------	-------	--------	---	---	---

## GBTEX+TMBs by 8260D

1,2,4-Trimethylbenzene	ND	0.00200	mg/kg	1	B2H2309	08/23/2022	08/27/2022	U
1,3,5-Trimethylbenzene	ND	0.00200	"	"	"	"	"	U
Benzene	ND	0.00200	"	"	"	"	"	U
Ethylbenzene	ND	0.00200	"	"	"	"	"	U
Toluene	ND	0.00200	"	"	"	"	"	U
Xylenes, total	ND	0.00200	"	"	"	"	"	U
Gasoline Range Hydrocarbons	ND	0.200	"	"	"	"	"	U

Surrogate: 1,2-Dichloroethane-d4	115 %	70-130	"	"	"
Surrogate: Toluene-d8	94.6 %	70-130	"	"	"
Surrogate: 4-Bromofluorobenzene	96.6 %	70-130	"	"	"

## Metals by Saturated Paste by EPA 6010

Origins Laboratory, Inc.



The results in this report apply to the samples analyzed in accordance with the chain of custody document. This analytical report must be reproduced in its entirety.

Eagle Environmental Consulting, Inc.  
8000 W 44th Ave  
Wheat Ridge CO 80033

Martin C Eckert III  
Project Number: [none]  
Project: Civitas - State Antelope 14-21-16 XRLNB

EX-SS-04@2'

8/22/2022 10:45:00AM

Analyte	Result	Min Detection Limit	Reporting Limit	Units	Dilution	Batch	Prepared	Analyzed	Notes
---------	--------	---------------------	-----------------	-------	----------	-------	----------	----------	-------

Origins Laboratory, Inc.  
Y208521-04 (Soil)

## Metals by Saturated Paste by EPA 6010

Calcium	1.04	0.499	meq/L	10	[CALC]	08/23/2022	08/24/2022
Magnesium	ND	0.823	"	"	"	"	"
Sodium	ND	0.435	"	"	"	"	"

## PAH by 8270D SIM

1-Methylnaphthalene	ND	0.000364	0.00067	mg/Kg	1	L634005	08/25/2022	08/26/2022
2-Methylnaphthalene	ND	0.000645	0.00067	"	"	"	"	"
Acenaphthene	ND	0.000304	0.00067	"	"	"	"	"
Anthracene	ND	0.000334	0.00067	"	"	"	"	"
Benzo(a)anthracene	ND	0.000493	0.00067	"	"	"	"	"
Benzo(a)pyrene	ND	0.000468	0.00067	"	"	"	"	"
Benzo(b)fluoranthene	ND	0.000585	0.00067	"	"	"	"	"
Benzo(k)fluoranthene	ND	0.000437	0.00067	"	"	"	"	"
Chrysene	0.00131	0.000624	0.00067	"	"	"	"	"
Dibenz(a,h)anthracene	ND	0.000614	0.00067	"	"	"	"	"
Fluoranthene	ND	0.000394	0.00067	"	"	"	"	"
Fluorene	ND	0.000286	0.00067	"	"	"	"	"
Indeno(1,2,3-cd)pyrene	ND	0.000627	0.00067	"	"	"	"	"
Naphthalene	ND	0.000484	0.00067	"	"	"	"	"
Pyrene	ND	0.000643	0.00067	"	"	"	"	"

Origins Laboratory, Inc.



The results in this report apply to the samples analyzed in accordance with the chain of custody document. This analytical report must be reproduced in its entirety.



Eagle Environmental Consulting, Inc.  
8000 W 44th Ave  
Wheat Ridge CO 80033

Martin C Eckert III  
Project Number: [none]  
Project: Civitas - State Antelope 14-21-16 XRLNB

EX-SS-04@2'

8/22/2022 10:45:00AM

Analyte	Result	Min Detection Limit	Reporting Limit	Units	Dilution	Batch	Prepared	Analyzed	Notes
---------	--------	---------------------	-----------------	-------	----------	-------	----------	----------	-------

Waypoint Analytical, LLC.  
Y208521-04 (Soil)

## PAH by 8270D SIM

Surrogate: 2-Fluorobiphenyl	55.6 %	33-115	L6340 05	08/25/2022	08/26/2022
Surrogate: 4-Terphenyl-d14	61.3 %	33-122	"	"	"
Surrogate: Nitrobenzene-d5	56.5 %	29-110	"	"	"

## pH in Soil by 9045D

pH	8.08	pH Units	1	B2H2320	08/23/2022	08/24/2022
----	------	----------	---	---------	------------	------------

## SAR by 20B Saturated Paste

SAR	0.172	SAR	1	B2H2319	08/23/2022	08/24/2022
-----	-------	-----	---	---------	------------	------------

## Specific Conductance Mod. 9050A

Specific Conductance (EC)	0.185	0.00500	mmhos/cm	1	B2H2320	08/23/2022	08/24/2022
---------------------------	-------	---------	----------	---	---------	------------	------------

## Table 915 metals by EPA 6020B

Arsenic	2.74	0.0763	mg/kg	5	B2H2315	08/23/2022	08/24/2022
Barium	66.8	7.63	"	"	"	"	"

Origins Laboratory, Inc.



The results in this report apply to the samples analyzed in accordance with the chain of custody document. This analytical report must be reproduced in its entirety.

Eagle Environmental Consulting, Inc.  
8000 W 44th Ave  
Wheat Ridge CO 80033

Martin C Eckert III  
Project Number: [none]  
Project: Civitas - State Antelope 14-21-16 XRLNB

EX-FS-01@2.5'

8/22/2022 10:50:00AM

Analyte	Result	Min Detection Limit	Reporting Limit	Units	Dilution	Batch	Prepared	Analyzed	Notes
---------	--------	---------------------	-----------------	-------	----------	-------	----------	----------	-------

Origins Laboratory, Inc.  
Y208521-05 (Soil)

## DRO/ORO by EPA 8015D

Diesel (C10-C28)	ND	25.0	mg/kg	1	B2H2311	08/23/2022	08/31/2022	U
Residual Range Organics (C28-C40)	ND	100	"	"	"	"	"	U

Surrogate: o-Terphenyl	112 %	50-150	"	"	"
------------------------	-------	--------	---	---	---

## GBTEX+TMBs by 8260D

1,2,4-Trimethylbenzene	ND	0.00200	mg/kg	1	B2H2309	08/23/2022	08/27/2022	U
1,3,5-Trimethylbenzene	ND	0.00200	"	"	"	"	"	U
Benzene	ND	0.00200	"	"	"	"	"	U
Ethylbenzene	ND	0.00200	"	"	"	"	"	U
Toluene	ND	0.00200	"	"	"	"	"	U
Xylenes, total	ND	0.00200	"	"	"	"	"	U
Gasoline Range Hydrocarbons	ND	0.200	"	"	"	"	"	U

Surrogate: 1,2-Dichloroethane-d4	114 %	70-130	"	"	"
Surrogate: Toluene-d8	96.0 %	70-130	"	"	"
Surrogate: 4-Bromofluorobenzene	94.6 %	70-130	"	"	"

## Metals by Saturated Paste by EPA 6010

Origins Laboratory, Inc.



The results in this report apply to the samples analyzed in accordance with the chain of custody document. This analytical report must be reproduced in its entirety.

Eagle Environmental Consulting, Inc.  
8000 W 44th Ave  
Wheat Ridge CO 80033

Martin C Eckert III  
Project Number: [none]  
Project: Civitas - State Antelope 14-21-16 XRLNB

EX-FS-01@2.5'

8/22/2022 10:50:00AM

Analyte	Result	Min Detection Limit	Reporting Limit	Units	Dilution	Batch	Prepared	Analyzed	Notes
---------	--------	---------------------	-----------------	-------	----------	-------	----------	----------	-------

Origins Laboratory, Inc.  
Y208521-05 (Soil)

## Metals by Saturated Paste by EPA 6010

Calcium	0.793	0.499	meq/L	10	[CALC]	08/23/2022	08/24/2022
Magnesium	ND	0.823	"	"	"	"	"
Sodium	ND	0.435	"	"	"	"	"

## PAH by 8270D SIM

1-Methylnaphthalene	ND	0.000364	0.00067	mg/Kg	1	L634005	08/25/2022	08/26/2022
2-Methylnaphthalene	ND	0.000645	0.00067	"	"	"	"	"
Acenaphthene	ND	0.000304	0.00067	"	"	"	"	"
Anthracene	ND	0.000334	0.00067	"	"	"	"	"
Benzo(a)anthracene	ND	0.000493	0.00067	"	"	"	"	"
Benzo(a)pyrene	0.000628	0.000468	0.00067	"	"	"	"	J
Benzo(b)fluoranthene	0.000661	0.000585	0.00067	"	"	"	"	J
Benzo(k)fluoranthene	0.000513	0.000437	0.00067	"	"	"	"	J
Chrysene	0.00137	0.000624	0.00067	"	"	"	"	"
Dibenz(a,h)anthracene	ND	0.000614	0.00067	"	"	"	"	"
Fluoranthene	0.000625	0.000394	0.00067	"	"	"	"	J
Fluorene	ND	0.000286	0.00067	"	"	"	"	"
Indeno(1,2,3-cd)pyrene	ND	0.000627	0.00067	"	"	"	"	"
Naphthalene	ND	0.000484	0.00067	"	"	"	"	"
Pyrene	0.000756	0.000643	0.00067	"	"	"	"	"
Surrogate: 2-Fluorobiphenyl	60.6 %		33-115			"	"	"

Origins Laboratory, Inc.



The results in this report apply to the samples analyzed in accordance with the chain of custody document. This analytical report must be reproduced in its entirety.

Eagle Environmental Consulting, Inc.  
8000 W 44th Ave  
Wheat Ridge CO 80033

Martin C Eckert III  
Project Number: [none]  
Project: Civitas - State Antelope 14-21-16 XRLNB

EX-FS-01@2.5'

8/22/2022 10:50:00AM

Analyte	Result	Min Detection Limit	Reporting Limit	Units	Dilution	Batch	Prepared	Analyzed	Notes
---------	--------	---------------------	-----------------	-------	----------	-------	----------	----------	-------

Waypoint Analytical, LLC.  
Y208521-05 (Soil)

## PAH by 8270D SIM

Surrogate: 4-Terphenyl-d14	67 %	33-122				L6340 05	08/25/2022	08/26/2022	
Surrogate: Nitrobenzene-d5	61.8 %	29-110				"	"	"	

## pH in Soil by 9045D

pH	8.06			pH Units	1	B2H2320	08/23/2022	08/24/2022	
----	------	--	--	----------	---	---------	------------	------------	--

## SAR by 20B Saturated Paste

SAR	0.491			SAR	1	B2H2319	08/23/2022	08/24/2022	
-----	-------	--	--	-----	---	---------	------------	------------	--

## Specific Conductance Mod. 9050A

Specific Conductance (EC)	0.167	0.00500	mmhos/cm	1	B2H2320	08/23/2022	08/24/2022		
---------------------------	-------	---------	----------	---	---------	------------	------------	--	--

## Table 915 metals by EPA 6020B

Arsenic	2.21	0.0996	mg/kg	5	B2H2315	08/23/2022	08/24/2022		
Barium	88.3	9.96	"	"	"	"	"	"	

Origins Laboratory, Inc.



The results in this report apply to the samples analyzed in accordance with the chain of custody document. This analytical report must be reproduced in its entirety.

Eagle Environmental Consulting, Inc.  
8000 W 44th Ave  
Wheat Ridge CO 80033

Martin C Eckert III  
Project Number: [none]  
Project: Civitas - State Antelope 14-21-16 XRLNB

**Volatile Organic Compounds by GC/MS SW846 8260D - Quality Control**  
**Origins Laboratory, Inc.**

Analyte	Result	Reporting Limit	Units	Spike Level	Source Result	%REC	%REC Limits	RPD	RPD Limit	Notes
<b>Batch B2H2309 - EPA 5030 (soil)</b>										
<b>Blank (B2H2309-BLK1)</b>					Prepared: 08/23/2022 Analyzed: 08/26/2022					
1,2,4-Trimethylbenzene	ND	0.00200	mg/kg							U
1,3,5-Trimethylbenzene	ND	0.00200	"							U
Benzene	ND	0.00200	"							U
Ethylbenzene	ND	0.00200	"							U
Naphthalene	ND	0.00380	"							U
Toluene	ND	0.00200	"							U
Xylenes, total	ND	0.00200	"							U
Gasoline Range Hydrocarbons	ND	0.200	"							U
Surrogate: 1,2-Dichloroethane-d4	0.13		"	0.125	104		70-130			
Surrogate: Toluene-d8	0.13		"	0.125	102		70-130			
Surrogate: 4-Bromofluorobenzene	0.12		"	0.125	93.0		70-130			

Origins Laboratory, Inc.



*The results in this report apply to the samples analyzed in accordance with the chain of custody document. This analytical report must be reproduced in its entirety.*

Eagle Environmental Consulting, Inc.  
8000 W 44th Ave  
Wheat Ridge CO 80033

Martin C Eckert III  
Project Number: [none]  
Project: Civitas - State Antelope 14-21-16 XRLNB

**Volatile Organic Compounds by GC/MS SW846 8260D - Quality Control**  
**Origins Laboratory, Inc.**

Analyte	Result	Reporting Limit	Units	Spike Level	Source Result	%REC	%REC Limits	RPD	RPD Limit	Notes
<b>Batch B2H2309 - EPA 5030 (soil)</b>										
<b>LCS (B2H2309-BS1)</b>					Prepared: 08/23/2022 Analyzed: 08/26/2022					
1,2,4-Trimethylbenzene	0.0956	0.00200	mg/kg	0.100		95.6	70-130			
1,3,5-Trimethylbenzene	0.0975	0.00200	"	0.100		97.5	70-130			
Benzene	0.103	0.00200	"	0.100		103	70-130			
Ethylbenzene	0.0946	0.00200	"	0.100		94.6	70-130			
Naphthalene	0.0883	0.00380	"	0.100		88.3	70-130			
Toluene	0.0978	0.00200	"	0.100		97.8	70-130			
o-Xylene	0.0950	0.00200	"	0.100		95.0	70-130			
m,p-Xylene	0.192	0.00400	"	0.200		95.8	70-130			
Surrogate: 1,2-Dichloroethane-d4	0.13		"	0.125		101	70-130			
Surrogate: Toluene-d8	0.12		"	0.125		97.2	70-130			
Surrogate: 4-Bromofluorobenzene	0.13		"	0.125		102	70-130			

Origins Laboratory, Inc.



The results in this report apply to the samples analyzed in accordance with the chain of custody document. This analytical report must be reproduced in its entirety.



Eagle Environmental Consulting, Inc.  
8000 W 44th Ave  
Wheat Ridge CO 80033

Martin C Eckert III  
Project Number: [none]  
Project: Civitas - State Antelope 14-21-16 XRLNB

**Volatile Organic Compounds by GC/MS SW846 8260D - Quality Control**  
**Origins Laboratory, Inc.**

Analyte	Result	Reporting Limit	Units	Spike Level	Source Result	%REC	%REC Limits	RPD	RPD Limit	Notes
<b>Batch B2H2309 - EPA 5030 (soil)</b>										
<b>Matrix Spike (B2H2309-MS1)</b>		<b>Source: Y208490-01</b>			Prepared: 08/23/2022 Analyzed: 08/26/2022					
1,2,4-Trimethylbenzene	0.0741	0.00200	mg/kg	0.100	ND	74.1	70-130			
1,3,5-Trimethylbenzene	0.0753	0.00200	"	0.100	ND	75.3	70-130			
Benzene	0.0989	0.00200	"	0.100	ND	98.9	70-130			
Ethylbenzene	0.0840	0.00200	"	0.100	ND	84.0	70-130			
Naphthalene	0.0719	0.00380	"	0.100	ND	71.9	70-130			
Toluene	0.0884	0.00200	"	0.100	ND	88.4	70-130			
o-Xylene	0.0863	0.00200	"	0.100	ND	86.3	70-130			
m,p-Xylene	0.168	0.00400	"	0.200	ND	84.0	70-130			
Surrogate: 1,2-Dichloroethane-d4	0.13		"	0.125		104	70-130			
Surrogate: Toluene-d8	0.12		"	0.125		96.3	70-130			
Surrogate: 4-Bromofluorobenzene	0.13		"	0.125		105	70-130			

Origins Laboratory, Inc.



The results in this report apply to the samples analyzed in accordance with the chain of custody document. This analytical report must be reproduced in its entirety.

Eagle Environmental Consulting, Inc.  
8000 W 44th Ave  
Wheat Ridge CO 80033

Martin C Eckert III  
Project Number: [none]  
Project: Civitas - State Antelope 14-21-16 XRLNB

**Volatile Organic Compounds by GC/MS SW846 8260D - Quality Control**  
**Origins Laboratory, Inc.**

Analyte	Result	Reporting Limit	Units	Spike Level	Source Result	%REC	%REC Limits	RPD	RPD Limit	Notes
<b>Batch B2H2309 - EPA 5030 (soil)</b>										
<b>Matrix Spike Dup (B2H2309-MSD1)</b>					<b>Source: Y208490-01</b>					
										Prepared: 08/23/2022 Analyzed: 08/26/2022
1,2,4-Trimethylbenzene	0.0837	0.00200	mg/kg	0.100	ND	83.7	70-130	12.2	20	
1,3,5-Trimethylbenzene	0.0844	0.00200	"	0.100	ND	84.4	70-130	11.4	20	
Benzene	0.109	0.00200	"	0.100	ND	109	70-130	9.37	20	
Ethylbenzene	0.0899	0.00200	"	0.100	ND	89.9	70-130	6.72	20	
Naphthalene	0.0904	0.00380	"	0.100	ND	90.4	70-130	22.9	20	QR-02
Toluene	0.0968	0.00200	"	0.100	ND	96.8	70-130	9.07	20	
o-Xylene	0.0929	0.00200	"	0.100	ND	92.9	70-130	7.41	20	
m,p-Xylene	0.170	0.00400	"	0.200	ND	85.2	70-130	1.41	20	
Surrogate: 1,2-Dichloroethane-d4	0.13		"	0.125		106	70-130			
Surrogate: Toluene-d8	0.12		"	0.125		96.1	70-130			
Surrogate: 4-Bromofluorobenzene	0.13		"	0.125		102	70-130			

Origins Laboratory, Inc.



The results in this report apply to the samples analyzed in accordance with the chain of custody document. This analytical report must be reproduced in its entirety.

Eagle Environmental Consulting, Inc.  
8000 W 44th Ave  
Wheat Ridge CO 80033

Martin C Eckert III  
Project Number: [none]  
Project: Civitas - State Antelope 14-21-16 XRLNB

**Volatile Organic Compounds by GC/MS SW846 8260D - Quality Control**  
**Origins Laboratory, Inc.**

Analyte	Result	Reporting Limit	Units	Spike Level	Source Result	%REC	%REC Limits	RPD	RPD Limit	Notes
Batch B2H2311 - EPA 3550B										
Blank (B2H2311-BLK1)					Prepared: 08/23/2022 Analyzed: 08/31/2022					
Diesel (C10-C28)	ND	25.0	mg/kg							U
Residual Range Organics (C28-C40)	ND	100	"							U
Surrogate: o-Terphenyl	35		"	24.9		140	50-150			

Origins Laboratory, Inc.



*The results in this report apply to the samples analyzed in accordance with the chain of custody document. This analytical report must be reproduced in its entirety.*

Eagle Environmental Consulting, Inc.  
8000 W 44th Ave  
Wheat Ridge CO 80033

Martin C Eckert III  
Project Number: [none]  
Project: Civitas - State Antelope 14-21-16 XRLNB

**Extractable Petroleum Hydrocarbons by 8015D - Quality Control**  
**Origins Laboratory, Inc.**

Analyte	Result	Reporting Limit	Units	Spike Level	Source Result	%REC	%REC Limits	RPD	RPD Limit	Notes
---------	--------	-----------------	-------	-------------	---------------	------	-------------	-----	-----------	-------

Batch B2H2311 - EPA 3550B

**LCS (B2H2311-BS1)**

Prepared: 08/23/2022 Analyzed: 09/08/2022

Diesel (C10-C28)	535	25.0	mg/kg	500		107	70-130			
Residual Range Organics (C28-C40)	515	100	"	500		103	70-130			
Surrogate: o-Terphenyl	28		"	24.9		111	50-150			

Origins Laboratory, Inc.



*The results in this report apply to the samples analyzed in accordance with the chain of custody document. This analytical report must be reproduced in its entirety.*

Eagle Environmental Consulting, Inc.  
8000 W 44th Ave  
Wheat Ridge CO 80033

Martin C Eckert III  
Project Number: [none]  
Project: Civitas - State Antelope 14-21-16 XRLNB

**Extractable Petroleum Hydrocarbons by 8015D - Quality Control**  
**Origins Laboratory, Inc.**

Analyte	Result	Reporting Limit	Units	Spike Level	Source Result	%REC	%REC Limits	RPD	RPD Limit	Notes
---------	--------	-----------------	-------	-------------	---------------	------	-------------	-----	-----------	-------

**Batch B2H2311 - EPA 3550B**

Matrix Spike (B2H2311-MS1)		Source: Y208514-01			Prepared: 08/23/2022 Analyzed: 08/31/2022					
Diesel (C10-C28)	574	25.0	mg/kg	500	ND	115	70-130			
Residual Range Organics (C28-C40)	592	100	"	500	ND	118	70-130			
Surrogate: o-Terphenyl	27		"	24.9		109	50-150			

Origins Laboratory, Inc.



*The results in this report apply to the samples analyzed in accordance with the chain of custody document. This analytical report must be reproduced in its entirety.*

Eagle Environmental Consulting, Inc.  
8000 W 44th Ave  
Wheat Ridge CO 80033

Martin C Eckert III  
Project Number: [none]  
Project: Civitas - State Antelope 14-21-16 XRLNB

**Extractable Petroleum Hydrocarbons by 8015D - Quality Control**  
**Origins Laboratory, Inc.**

Analyte	Result	Reporting Limit	Units	Spike Level	Source Result	%REC	%REC Limits	RPD	RPD Limit	Notes
---------	--------	-----------------	-------	-------------	---------------	------	-------------	-----	-----------	-------

**Batch B2H2311 - EPA 3550B**

Matrix Spike Dup (B2H2311-MSD1)		Source: Y208514-01			Prepared: 08/23/2022 Analyzed: 08/31/2022					
Diesel (C10-C28)	545	25.0	mg/kg	500	ND	109	70-130	5.23	35	
Residual Range Organics (C28-C40)	563	100	"	500	ND	113	70-130	5.03	35	
Surrogate: o-Terphenyl	30		"	24.9		121	50-150			

Origins Laboratory, Inc.



*The results in this report apply to the samples analyzed in accordance with the chain of custody document. This analytical report must be reproduced in its entirety.*



Eagle Environmental Consulting, Inc.  
8000 W 44th Ave  
Wheat Ridge CO 80033

Martin C Eckert III  
Project Number: [none]  
Project: Civitas - State Antelope 14-21-16 XRLNB

## Extractable Petroleum Hydrocarbons by 8015D - Quality Control

### Origins Laboratory, Inc.

Analyte	Result	Reporting Limit	Units	Spike Level	Source Result	%REC	%REC Limits	RPD	RPD Limit	Notes
---------	--------	-----------------	-------	-------------	---------------	------	-------------	-----	-----------	-------

## Metals by SM 3500 Series Methods - Quality Control

### Origins Laboratory, Inc.

Analyte	Result	Reporting Limit	Units	Spike Level	Source Result	%REC	%REC Limits	RPD	RPD Limit	Notes
---------	--------	-----------------	-------	-------------	---------------	------	-------------	-----	-----------	-------

#### Batch B2H2315 - Default Prep Metals

##### Blank (B2H2315-BLK1)

Prepared: 08/23/2022 Analyzed: 08/24/2022

Arsenic	ND	0.000100	mg/kg							U
Barium	ND	0.0100	"							U

##### LCS (B2H2315-BS1)

Prepared: 08/23/2022 Analyzed: 08/24/2022

Arsenic	0.0524	0.000100	mg/kg	0.0500		105	80-120			
Barium	5.37	0.0100	"	5.00		107	80-120			

##### Matrix Spike (B2H2315-MS1)

Source: Y208514-01

Prepared: 08/23/2022 Analyzed: 08/24/2022

Arsenic	11.3	0.0754	mg/kg	7.54	3.88	97.8	75-125			
Barium	881	7.54	"	754	295	77.9	75-125			

##### Matrix Spike Dup (B2H2315-MSD1)

Source: Y208514-01

Prepared: 08/23/2022 Analyzed: 08/24/2022

Arsenic	13.1	0.0912	mg/kg	9.12	3.88	101	75-125	15.0	20	
Barium	1040	9.12	"	912	295	81.7	75-125	16.5	20	

Origins Laboratory, Inc.



The results in this report apply to the samples analyzed in accordance with the chain of custody document. This analytical report must be reproduced in its entirety.

Eagle Environmental Consulting, Inc.  
8000 W 44th Ave  
Wheat Ridge CO 80033

Martin C Eckert III  
Project Number: [none]  
Project: Civitas - State Antelope 14-21-16 XRLNB

## Classical Chemistry Parameters - Quality Control Origins Laboratory, Inc.

Analyte	Result	Reporting Limit	Units	Spike Level	Source Result	%REC	%REC Limits	RPD	RPD Limit	Notes
<b>Batch B2H2319 - Default Prep Metals</b>										
<b>Blank (B2H2319-BLK1)</b>					Prepared: 08/23/2022 Analyzed: 08/24/2022					
Calcium PPM	ND	10.0	mg/L							
SAR	0.00		SAR							
Magnesium PPM	ND	10.0	mg/L							
Sodium PPM	ND	10.0	"							
<b>Duplicate (B2H2319-DUP1)</b>					<b>Source: Y208492-01</b>		Prepared: 08/23/2022 Analyzed: 08/24/2022			
Calcium PPM	581	10.0	mg/L		612			5.26	50	
SAR	0.00		SAR		0.846			200	200	
Magnesium PPM	91.9	10.0	mg/L		102			9.96	50	
Sodium PPM	88.9	10.0	"		85.7			3.62	50	

Origins Laboratory, Inc.



*The results in this report apply to the samples analyzed in accordance with the chain of custody document. This analytical report must be reproduced in its entirety.*

Eagle Environmental Consulting, Inc.  
8000 W 44th Ave  
Wheat Ridge CO 80033

Martin C Eckert III  
Project Number: [none]  
Project: Civitas - State Antelope 14-21-16 XRLNB

## Saturated Paste - Quality Control Origins Laboratory, Inc.

Analyte	Result	Reporting Limit	Units	Spike Level	Source Result	%REC	%REC Limits	RPD	RPD Limit	Notes
---------	--------	-----------------	-------	-------------	---------------	------	-------------	-----	-----------	-------

### Batch B2H2320 - NO PREP

#### Blank (B2H2320-BLK1)

Prepared: 08/23/2022 Analyzed: 08/24/2022

pH	0.00		pH Units
Specific Conductance (EC)	0.00420	0.00500	mmhos/cm

#### Duplicate (B2H2320-DUP1)

Source: Y208492-01

Prepared: 08/23/2022 Analyzed: 08/24/2022

Specific Conductance (EC)	3.36	0.00500	mmhos/cm	3.30	1.80	25
pH	7.83		pH Units	7.65	2.33	25

Origins Laboratory, Inc.



The results in this report apply to the samples analyzed in accordance with the chain of custody document. This analytical report must be reproduced in its entirety.

Eagle Environmental Consulting, Inc.  
8000 W 44th Ave  
Wheat Ridge CO 80033

Martin C Eckert III  
Project Number: [none]  
Project: Civitas - State Antelope 14-21-16 XRLNB

**PAH by 8270D SIM - Quality Control**  
**Waypoint Analytical, LLC.**

Analyte	Result	Reporting Limit	Units	Spike Level	Source Result	%REC	%REC Limits	RPD	RPD Limit	Notes
---------	--------	-----------------	-------	-------------	---------------	------	-------------	-----	-----------	-------

**Batch L634005 - 3550B**

MSD (L 91322-MSD-L634005)		Source: 91322			Prepared: 08/25/2022 Analyzed: 08/26/2022					
Dibenz(a,h)anthracene	0.159	0.000614	mg/Kg	0.166	<0.000614	95.7	30-130	37.3	30	
Pyrene	0.111	0.000643	"	0.166	<0.000643	66.8	30-130	6.9	30	
Naphthalene	0.0921	0.000484	"	0.166	<0.000484	55.4	30-130	18.6	30	
Indeno(1,2,3-cd)pyrene	0.12	0.000627	"	0.166	<0.000627	72.2	30-130	45.6	30	
Fluoranthene	0.095	0.000394	"	0.166	0.000445	56.9	30-130	22.4	30	
Chrysene	0.114	0.000624	"	0.166	0.00149	67.7	30-130	6.7	30	
Benzo(k)fluoranthene	0.11	0.000437	"	0.166	0.000741	65.8	30-130	6.5	30	
2-Methylnaphthalene	0.102	0.000645	"	0.166	<0.000645	61.4	30-130	16.2	30	
Fluorene	0.0986	0.000286	"	0.166	<0.000286	59.3	30-130	9	30	
Benzo(b)fluoranthene	0.0794	0.000585	"	0.166	0.000927	47.2	30-130	5.3	30	
Acenaphthene	0.092	0.000304	"	0.166	<0.000304	55.4	30-130	11.2	30	
Anthracene	0.109	0.000334	"	0.166	<0.000334	65.6	30-130	7.9	30	
Benzo(a)anthracene	0.122	0.000493	"	0.166	0.000682	73	30-130	6.3	30	
Benzo(a)pyrene	0.119	0.000468	"	0.166	0.00105	71	30-130	3.3	30	
1-Methylnaphthalene	0.106	0.000364	"	0.166	<0.000364	63.8	30-130	14.8	30	
Surrogate: Nitrobenzene-d5	55.7		"	0.332	197	55.7	29-110			
Surrogate: 2-Fluorobiphenyl	53.9		"	0.332	188	53.9	33-115			
Surrogate: 4-Terphenyl-d14	69.8		"	0.332	230	69.8	33-122			

MS (L 91322-MS-L634005)		Source: 91322			Prepared: 08/25/2022 Analyzed: 08/26/2022					
Benzo(k)fluoranthene	0.103	0.000437	mg/Kg	0.166	0.000741	61.6	30-130			
Pyrene	0.119	0.000643	"	0.166	<0.000643	71.6	30-130			
Naphthalene	0.111	0.000484	"	0.166	<0.000484	66.8	30-130			
Indeno(1,2,3-cd)pyrene	0.0754	0.000627	"	0.166	<0.000627	45.4	30-130			
Fluorene	0.108	0.000286	"	0.166	<0.000286	65	30-130			
Fluoranthene	0.119	0.000394	"	0.166	0.000445	71.4	30-130			
Dibenz(a,h)anthracene	0.109	0.000614	"	0.166	<0.000614	65.6	30-130			

Origins Laboratory, Inc.



The results in this report apply to the samples analyzed in accordance with the chain of custody document. This analytical report must be reproduced in its entirety.

Eagle Environmental Consulting, Inc.  
8000 W 44th Ave  
Wheat Ridge CO 80033

Martin C Eckert III  
Project Number: [none]  
Project: Civitas - State Antelope 14-21-16 XRLNB

**PAH by 8270D SIM - Quality Control**  
**Waypoint Analytical, LLC.**

Analyte	Result	Reporting Limit	Units	Spike Level	Source Result	%REC	%REC Limits	RPD	RPD Limit	Notes
---------	--------	-----------------	-------	-------------	---------------	------	-------------	-----	-----------	-------

**Batch L634005 - 3550B**

MS (L 91322-MS-L634005)		Source: 91322			Prepared: 08/25/2022 Analyzed: 08/26/2022					
Chrysene	0.122	0.000624	mg/Kg	0.166	0.00149	72.5	30-130			
Benzo(b)fluoranthene	0.0753	0.000585	"	0.166	0.000927	44.8	30-130			
1-Methylnaphthalene	0.123	0.000364	"	0.166	<0.000364	74	30-130			
2-Methylnaphthalene	0.12	0.000645	"	0.166	<0.000645	72.2	30-130			
Acenaphthene	0.103	0.000304	"	0.166	<0.000304	62	30-130			
Anthracene	0.118	0.000334	"	0.166	<0.000334	71	30-130			
Benzo(a)anthracene	0.13	0.000493	"	0.166	0.000682	77.9	30-130			
Benzo(a)pyrene	0.123	0.000468	"	0.166	0.00105	73.4	30-130			
Surrogate: Nitrobenzene-d5	59.9		"	0.332	197	59.9	29-110			
Surrogate: 2-Fluorobiphenyl	58.7		"	0.332	188	58.7	33-115			
Surrogate: 4-Terphenyl-d14	75		"	0.332	230	75	33-122			

LCS (LCS-L634005)		Prepared: 08/25/2022 Analyzed: 08/26/2022								
Pyrene	0.124	0.000643	mg/Kg	0.167		74.2	30-130			
Fluoranthene	0.121	0.000394	"	0.167		72.4	30-130			
Benzo(k)fluoranthene	0.109	0.000437	"	0.167		65.2	30-130			
Naphthalene	0.115	0.000484	"	0.167		68.8	30-130			
1-Methylnaphthalene	0.126	0.000364	"	0.167		75.4	30-130			
Fluorene	0.108	0.000286	"	0.167		64.6	30-130			
Dibenz(a,h)anthracene	0.177	0.000614	"	0.167		106	30-130			
Chrysene	0.122	0.000624	"	0.167		73	30-130			
Benzo(a)pyrene	0.133	0.000468	"	0.167		79.6	30-130			
Benzo(a)anthracene	0.131	0.000493	"	0.167		78.4	30-130			
Anthracene	0.118	0.000334	"	0.167		70.6	30-130			
Acenaphthene	0.103	0.000304	"	0.167		61.6	30-130			
2-Methylnaphthalene	0.122	0.000645	"	0.167		73	30-130			
Indeno(1,2,3-cd)pyrene	0.137	0.000627	"	0.167		82	30-130			

Origins Laboratory, Inc.



The results in this report apply to the samples analyzed in accordance with the chain of custody document. This analytical report must be reproduced in its entirety.

Eagle Environmental Consulting, Inc.  
8000 W 44th Ave  
Wheat Ridge CO 80033

Martin C Eckert III  
Project Number: [none]  
Project: Civitas - State Antelope 14-21-16 XRLNB

**PAH by 8270D SIM - Quality Control**  
**Waypoint Analytical, LLC.**

Analyte	Result	Reporting Limit	Units	Spike Level	Source Result	%REC	%REC Limits	RPD	RPD Limit	Notes
<b>Batch L634005 - 3550B</b>										
<b>LCS (LCS-L634005)</b>					Prepared: 08/25/2022 Analyzed: 08/26/2022					
Benzo(b)fluoranthene	0.088	0.000585	mg/Kg	0.167		52.6	30-130			
Surrogate: Nitrobenzene-d5	65.7		"	0.333		65.7	29-110			
Surrogate: 4-Terphenyl-d14	85.5		"	0.333		85.5	33-122			
Surrogate: 2-Fluorobiphenyl	65.7		"	0.333		65.7	33-115			
<b>LRB (LRB-L634005)</b>					Prepared: 08/25/2022 Analyzed: 08/26/2022					
Chrysene	ND	0.00067	mg/Kg				-			
Dibenz(a,h)anthracene	ND	0.00067	"				-			
Fluoranthene	ND	0.00067	"				-			
Fluorene	ND	0.00067	"				-			
Benzo(k)fluoranthene	ND	0.00067	"				-			
Naphthalene	ND	0.00067	"				-			
Indeno(1,2,3-cd)pyrene	ND	0.00067	"				-			
Benzo(b)fluoranthene	ND	0.00067	"				-			
Benzo(a)pyrene	ND	0.00067	"				-			
Benzo(a)anthracene	ND	0.00067	"				-			
Acenaphthene	ND	0.00067	"				-			
2-Methylnaphthalene	ND	0.00067	"				-			
1-Methylnaphthalene	ND	0.00067	"				-			
Pyrene	ND	0.00067	"				-			
Anthracene	ND	0.00067	"				-			
Surrogate: Nitrobenzene-d5	58.8		"	0.333		58.8	29-110			
Surrogate: 4-Terphenyl-d14	73.5		"	0.333		73.5	33-122			
Surrogate: 2-Fluorobiphenyl	59.7		"	0.333		59.7	33-115			

Origins Laboratory, Inc.



The results in this report apply to the samples analyzed in accordance with the chain of custody document. This analytical report must be reproduced in its entirety.



Eagle Environmental Consulting, Inc.

8000 W 44th Ave

Wheat Ridge CO 80033

Martin C Eckert III

Project Number: [none]

Project: Civitas - State Antelope 14-21-16 XRLNB

### Notes and Definitions

U Sample is Non-Detect.

QR-02 The RPD result exceeded the QC control limits; however, both percent recoveries were acceptable. Sample results for the QC batch were accepted based on percent recoveries and completeness of QC data.

J Estimated Value. Analyte below reported quantitation limit.

ND Analyte NOT DETECTED at or above the reporting limit

RPD Relative Percent Difference

All soil results are reported on a wet weight basis.

Origins Laboratory, Inc.



*The results in this report apply to the samples analyzed in accordance with the chain of custody document. This analytical report must be reproduced in its entirety.*