

T2S, R98W, 6th P.M.

TEP Rocky Mountain LLC

FEDERAL RG 334-11-298
LOT 4, SECTION 13, T2S, R98W, 6th P.M.
RIO BLANCO COUNTY, COLORADO

BASIS OF BEARINGS

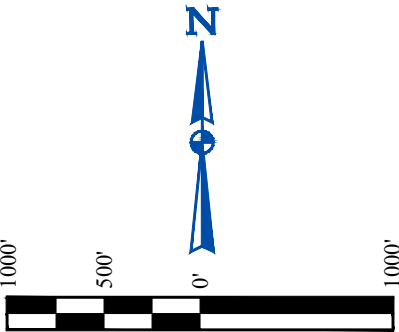
BEARINGS ARE A BASED ASSUMPTION THAT THE NORTH LINE OF THE NORTHWEST 1/4 OF SECTION 13 BEARS S89°58'12"W. MONUMENTS DESCRIBED HEREON.

BASIS OF ELEVATION

BENCH MARK (M25) LOCATED IN THE NE 1/4 OF SECTION 25, T2S, R99W, 6th P.M., TAKEN FROM THE YANKEE GULCH QUADRANGLE, COLORADO, RIO BLANCO COUNTY, 7.5 MINUTE QUAD. (TOPOGRAPHIC MAP) PUBLISHED BY THE UNITED STATES DEPARTMENT OF THE INTERIOR, GEOLOGICAL SURVEY. SAID ELEVATION IS MARKED AS BEING 6971 FEET.

NOTE:
SEE LOCATION DRAWING PLAT FOR VISIBLE
IMPROVEMENTS WITHIN 2,000' OF THIS LOCATION.

NOTES:
Distances referenced
on plat to section lines
are perpendicular.



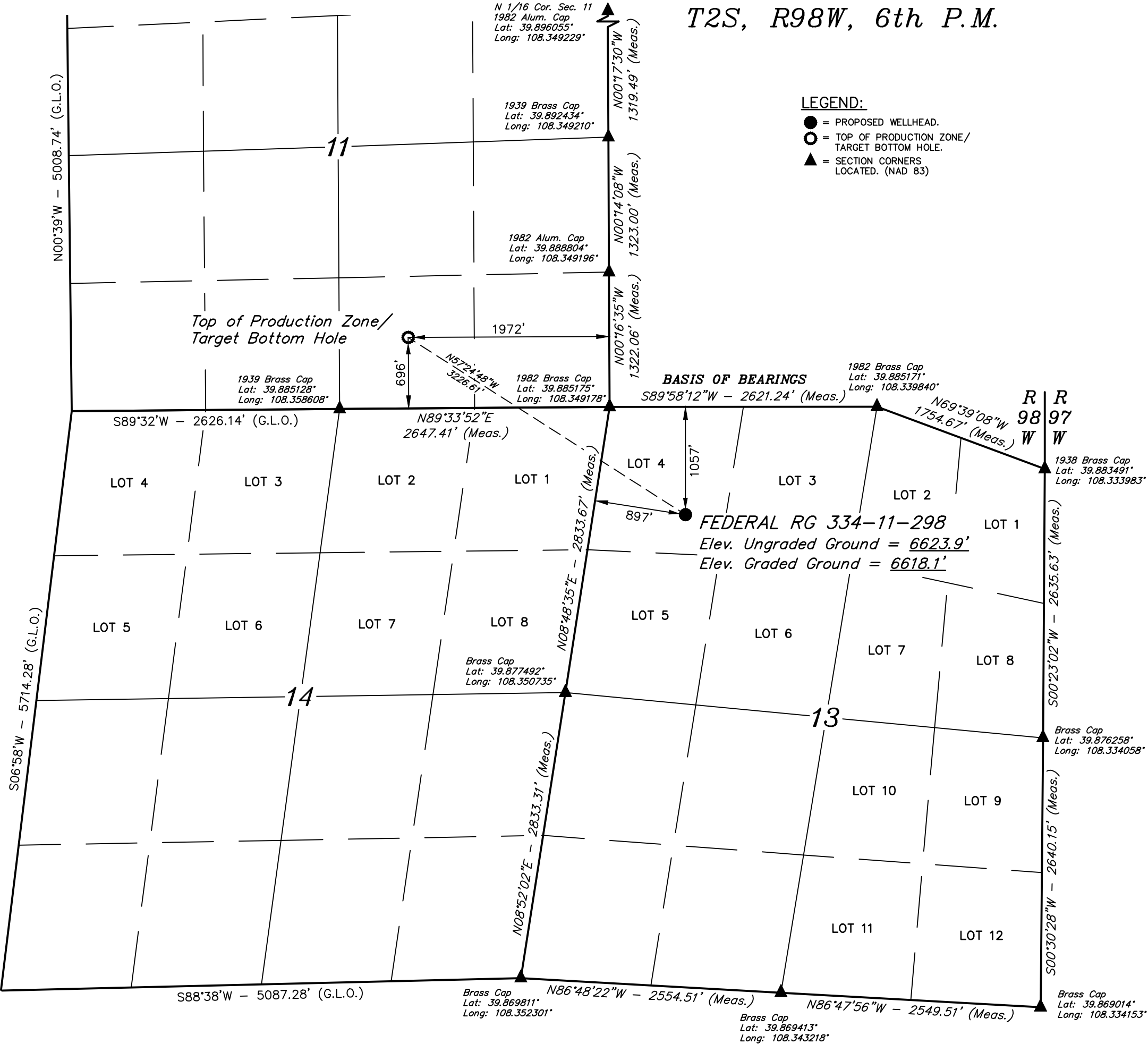
LEGEND:

- = PROPOSED WELLHEAD.
- = TOP OF PRODUCTION ZONE/
TARGET BOTTOM HOLE.
- ▲ = SECTION CORNERS
LOCATED. (NAD 83)

BASIS OF BEARINGS

S89°58'12"W - 2621.24' (Meas.)

FEDERAL RG 334-11-298
Elev. Ungraded Ground = 6623.9'
Elev. Graded Ground = 6618.1'



PDOP = 1.5

NAD 83 (SURFACE LOCATION)	
LATITUDE = 39°52'56.18" (39.882274°)	
LONGITUDE = 108°20'47.52" (108.346534°)	
STATE PLANE NAD 83 (CO. NORTH)	
N: 1212783.05' E: 2201293.92'	
STATE PLANE NAD 83 (CO. CENTRAL)	
N: 1758766.95' E: 2201246.35'	

NAD 83 (TPZ / TBH)	
LATITUDE = 39°53'13.38" (39.887051°)	
LONGITUDE = 108°21'22.36" (108.356212°)	
STATE PLANE NAD 83 (CO. NORTH)	
N: 1214609.55' E: 2198635.39'	
STATE PLANE NAD 83 (CO. CENTRAL)	
N: 1760591.50' E: 2198586.28'	

CERTIFICATE

THIS IS TO CERTIFY THAT THE ABOVE PLAT WAS PREPARED AND THE LOCATION AS SHOWN WAS STAKED ON THE GROUND FROM FIELD NOTES OF ACTUAL SURVEYS MADE BY ME OR UNDER MY SUPERVISION AND THAT THE SAME ARE TRUE AND CORRECT TO THE BEST OF MY KNOWLEDGE AND BELIEF.

REGISTERED LAND SURVEYOR
REGISTRATION NO. 19180
STATE OF COLORADO 04-05-22

REV: 3 04-05-22 M.D. (ADD TPZ)



UELS, LLC
Corporate Office * 85 South 200 East
Vernal, UT 84078 * (435) 789-1017

SURVEYED BY	BART HUNTING	07-21-21	SCALE
DRAWN BY	T.L.L.	09-26-21	1" = 1000'

WELL LOCATION PLAT