

LEGEND:

- = PROPOSED WELLHEAD.
- = TOP OF PRODUCTION ZONE/  
TARGET BOTTOM HOLE.
- ▲ = SECTION CORNERS  
LOCATED. (NAD 83)

NOTES:

Distances referenced  
on plat to section lines  
are perpendicular.

T2S, R98W, 6th P.M.

TEP Rocky Mountain LLC

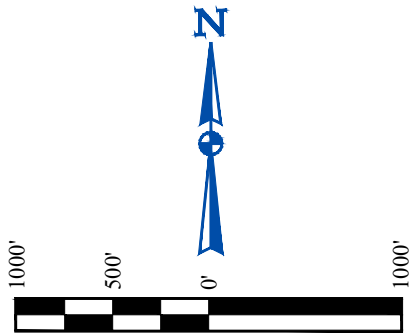
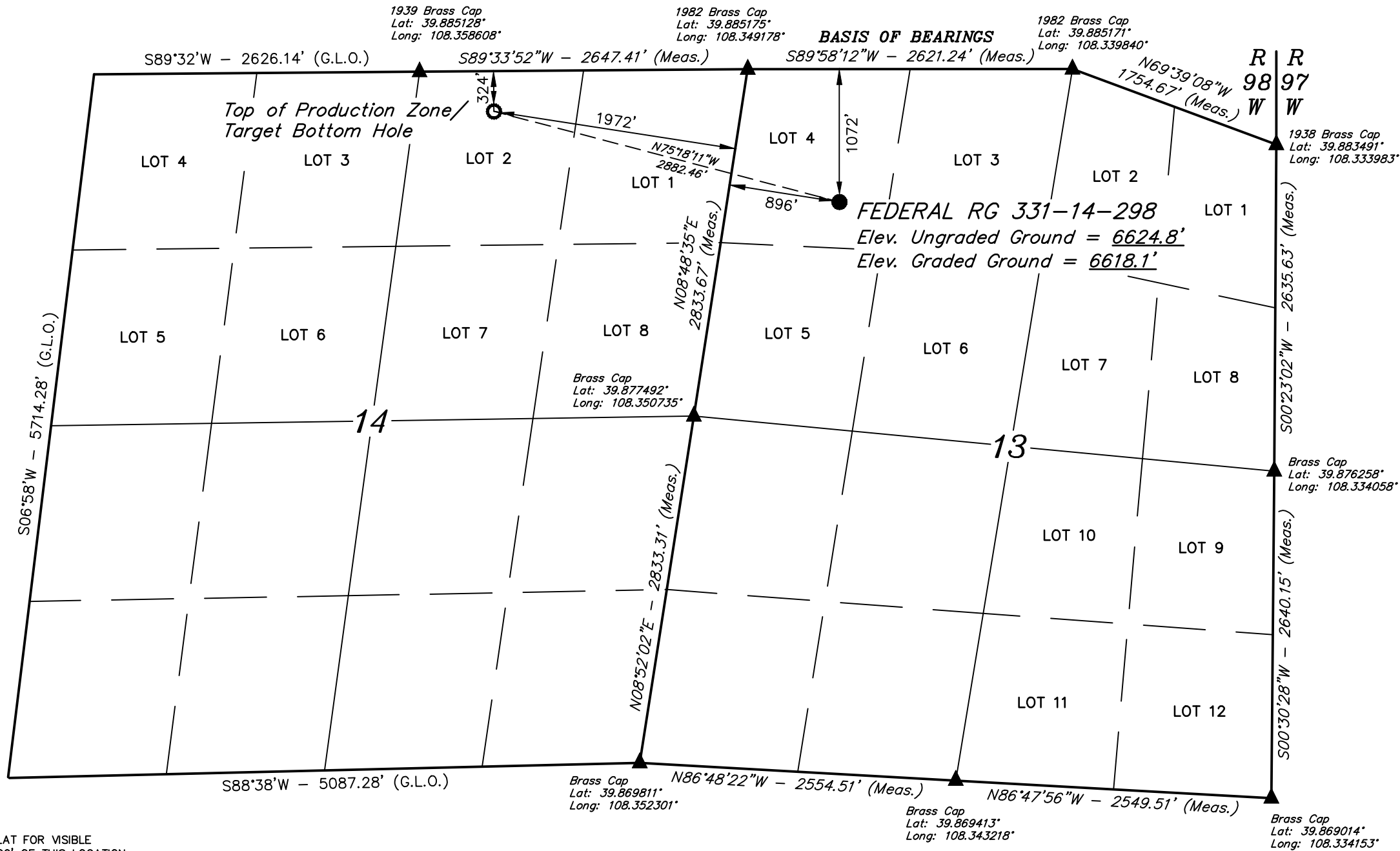
FEDERAL RG 331-14-298  
LOT 4, SECTION 13, T2S, R98W, 6th P.M.  
RIO BLANCO COUNTY, COLORADO

BASIS OF BEARINGS

BEARINGS ARE A BASED ASSUMPTION THAT THE NORTH LINE OF THE NORTHWEST 1/4 OF  
SECTION 13 BEARS S89°58'12"W. MONUMENTS DESCRIBED HEREON.

BASIS OF ELEVATION

BENCH MARK (M25) LOCATED IN THE NE 1/4 OF SECTION 25, T2S, R99W, 6th P.M., TAKEN  
FROM THE YANKEE GULCH QUADRANGLE, COLORADO, RIO BLANCO COUNTY, 7.5 MINUTE  
QUAD. (TOPOGRAPHIC MAP) PUBLISHED BY THE UNITED STATES DEPARTMENT OF THE  
INTERIOR, GEOLOGICAL SURVEY. SAID ELEVATION IS MARKED AS BEING 6971 FEET.



PDOP = 1.5

NAD 83 (SURFACE LOCATION)	
LATITUDE = 39°52'56.04" (39.882233°)	
LONGITUDE = 108°20'47.56" (108.346545°)	
STATE PLANE NAD 83 (CO. NORTH)	
N: 1212768.49' E: 2201290.34'	
STATE PLANE NAD 83 (CO. CENTRAL)	
N: 1758752.39' E: 2201242.78'	

NAD 83 (TPZ / TBH)	
LATITUDE = 39°53'03.29" (39.884248°)	
LONGITUDE = 108°21'23.31" (108.356474°)	
STATE PLANE NAD 83 (CO. NORTH)	
N: 1213591.72' E: 2198528.98'	
STATE PLANE NAD 83 (CO. CENTRAL)	
N: 1759573.54' E: 2198480.64'	

CERTIFICATE

THIS IS TO CERTIFY THAT THE ABOVE PLAT WAS PREPARED AND  
LOCATION AS SHOWN WAS STAKED ON THE GROUND FROM FIELD NOTES  
OF ACTUAL SURVEYS MADE BY ME OR UNDER MY SUPERVISION AND THAT  
THE SAME ARE TRUE AND CORRECT TO THE BEST OF MY KNOWLEDGE AND  
BELIEF.

REGISTERED LAND SURVEYOR  
REGISTRATION NO. 19180  
STATE OF COLORADO

REV: 3 04-05-22 M.D. (ADD TPZ)

NOTE:  
SEE LOCATION DRAWING PLAT FOR VISIBLE  
IMPROVEMENTS WITHIN 2,000' OF THIS LOCATION.



UELS, LLC  
Corporate Office \* 85 South 200 East  
Vernal, UT 84078 \* (435) 789-1017



UELS, LLC  
Corporate Office \* 85 South 200 East  
Vernal, UT 84078 \* (435) 789-1017

SURVEYED BY	BART HUNTING	07-21-21	SCALE
DRAWN BY	T.L.L.	09-26-21	1" = 1000'

WELL LOCATION PLAT