

T2S, R98W, 6th P.M.

TEP Rocky Mountain LLC

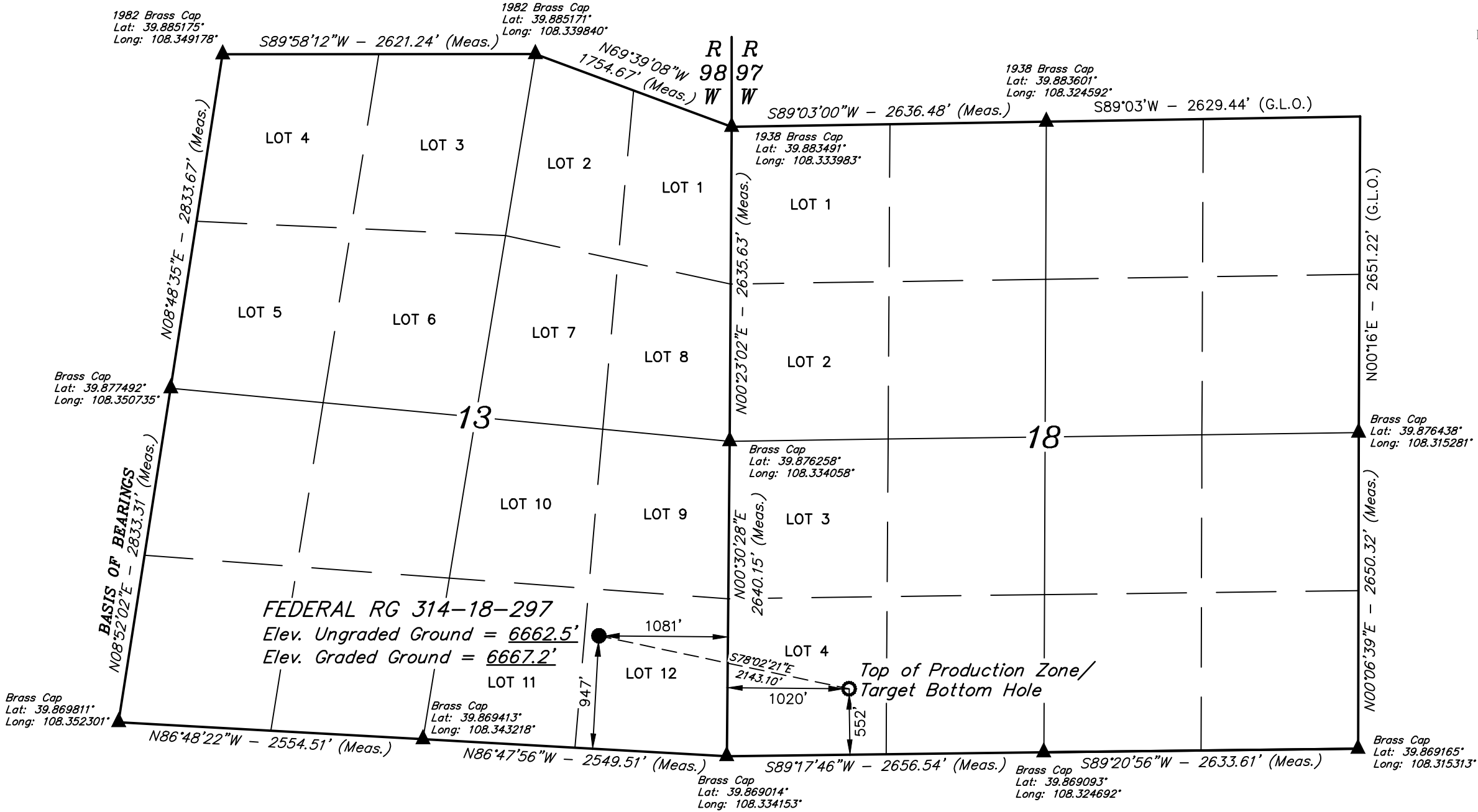
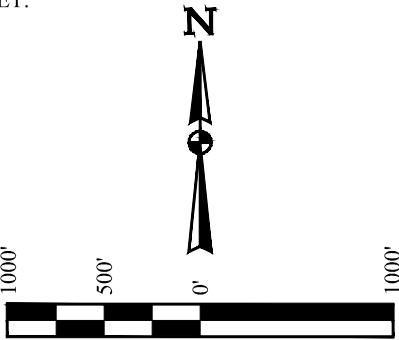
FEDERAL RG 314-18-297
LOT 12, SECTION 13, T2S, R98W, 6th P.M.
RIO BLANCO COUNTY, COLORADO

BASIS OF BEARINGS

BEARINGS ARE A BASED ASSUMPTION THAT THE WEST LINE OF THE
SOUTHWEST 1/4 OF SECTION 13 BEARS N08°52'02"E. MONUMENTS
DESCRIBED HEREON.

BASIS OF ELEVATION

BENCH MARK (MR 25) LOCATED IN THE NE 1/4 OF SECTION 25, T2S,
R99W, 6th P.M., TAKEN FROM THE YANKEE GULCH QUADRANGLE,
COLORADO, RIO BLANCO, 7.5 MINUTE SERIES (TOPOGRAPHIC
MAP) PUBLISHED BY THE UNITED STATES DEPARTMENT OF THE
INTERIOR, GEOLOGICAL SURVEY. SAID ELEVATION IS MARKED AS
BEING 6971 FEET.



NOTE:
Distances referenced on plat to section
lines are perpendicular.

See location drawing plat for visible
improvements within 2,000' of this
location.

- LEGEND:
- = PROPOSED WELLHEAD.
 - = TOP OF PRODUCTION ZONE/
TARGET BOTTOM HOLE.
 - ▲ = SECTION CORNERS
LOCATED. (NAD 83)

CERTIFICATE
THIS IS TO CERTIFY THAT THE ABOVE PLAT WAS PREPARED AND
LOCATION AS SHOWN WAS STAKED ON THE GROUND FROM FIELD NOTES
OF ACTUAL SURVEYS MADE BY ME OR UNDER MY SUPERVISION AND THAT
THE SAME ARE TRUE AND CORRECT TO THE BEST OF MY KNOWLEDGE AND
BELIEF.
REGISTERED LAND SURVEYOR
REGISTRATION NO. 39130
STATE OF COLORADO
04-12-22

REV: 5 04-12-22 T.L.L. (ADD TPZ)

PDOP = 1.5

NAD 83 (SURFACE LOCATION)	NAD 83 (TPZ/TBH)
LATITUDE = 39°52'18.43" (39.871786°)	LATITUDE = 39°52'14.01" (39.870560°)
LONGITUDE = 108°20'16.67" (108.337965°)	LONGITUDE = 108°19'49.80" (108.330500°)
STATE PLANE NAD 83 (CO. NORTH)	STATE PLANE NAD 83 (CO. NORTH)
N: 1208887.55' E: 2203575.12'	N: 1208374.19' E: 2205655.07'
STATE PLANE NAD 83 (CO. CENTRAL)	STATE PLANE NAD 83 (CO. CENTRAL)
N: 1754873.01' E: 2203530.65'	N: 1754361.21' E: 2205611.08'



UELS, LLC
Corporate Office * 85 South 200 East
Vernal, UT 84078 * (435) 789-1017

SURVEYED BY	BART HUNTING	07-21-21	SCALE
DRAWN BY	J.J.	09-21-21	1" = 1000'

WELL LOCATION PLAT