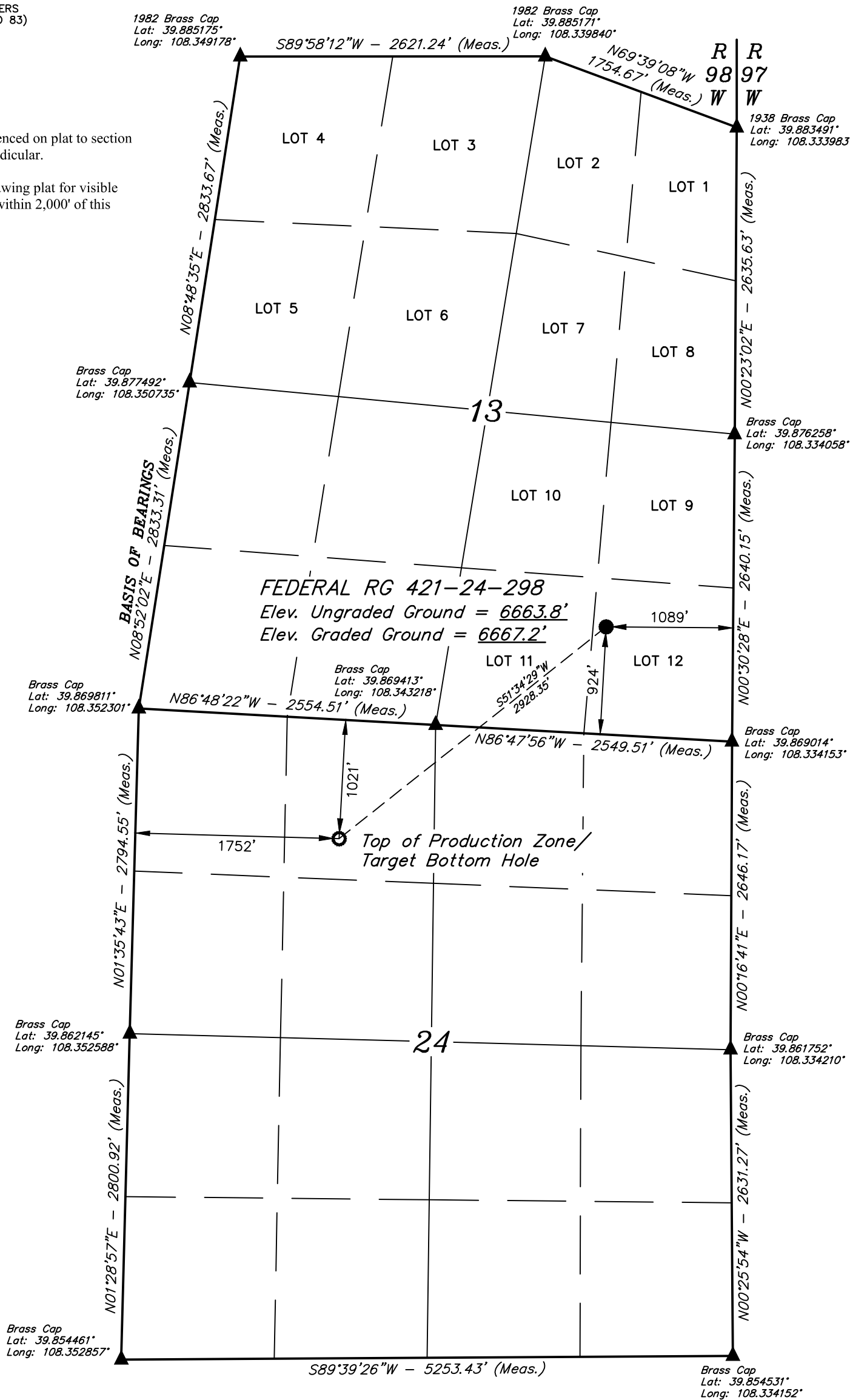


*T2S, R98W, 6th P.M.*

- = PROPOSED WELLHEAD.  
 ○ = TOP OF PRODUCTION ZONE/  
 TARGET BOTTOM HOLE.  
 ▲ = SECTION CORNERS  
 LOCATED. (NAD 83)

Distances referenced on plat to section lines are perpendicular.

See location drawing plat for visible improvements within 2,000' of this location.



**PDOP = 1.9**



<b>NAD 83 (SURFACE LOCATION)</b>	<b>NAD 83 (TPZ/TBH)</b>
<b>LATITUDE = 39°52'18.20" (39.871723°)</b>	<b>LATITUDE = 39°52'00.25" (39.866736°)</b>
<b>LONGITUDE = 108°20'16.79" (108.337998°)</b>	<b>LONGITUDE = 108°20'46.23" (108.346176°)</b>
<b>STATE PLANE NAD 83 (CO. NORTH)</b>	<b>STATE PLANE NAD 83 (CO. NORTH)</b>
<b>N: 1208865.00' E: 2203565.27'</b>	<b>N: 1207122.85' E: 2201212.77'</b>
<b>STATE PLANE NAD 83 (CO. CENTRAL)</b>	<b>STATE PLANE NAD 83 (CO. CENTRAL)</b>
<b>N: 1754850.44' E: 2203520.82'</b>	<b>N: 1753106.42' E: 2201169.54'</b>

BEARINGS ARE A BASED ASSUMPTION THAT THE WEST LINE OF THE SOUTHWEST 1/4 OF SECTION 13 BEARS N08°52'02"E. MONUMENTS DESCRIBED HEREON.

BENCH MARK (MR 25) LOCATED IN THE NE 1/4 OF SECTION 25, T2S, R99W, 6th P.M., TAKEN FROM THE YANKEE GULCH QUADRANGLE, COLORADO, RIO BLANCO, 7.5 MINUTE SERIES (TOPOGRAPHIC MAP) PUBLISHED BY THE UNITED STATES DEPARTMENT OF THE INTERIOR, GEOLOGICAL SURVEY. SAID ELEVATION IS MARKED AS BEING 6971 FEET.



**UELS, LLC**  
Corporate Office \* 85 South 200 East  
Vernal, UT 84078 \* (435) 789-1017



**FEDERAL RG 421-24-298  
LOT 12, SECTION 13, T2S, R98W, 6th P.M.  
RIO BLANCO COUNTY, COLORADO**

<b>SURVEYED BY</b>	BART HUNTING	07-21-21	<b>SCALE</b>
<b>DRAWN BY</b>	J.J.	09-21-21	1" = 1000'

## WELL LOCATION PLAT

THIS IS TO CERTIFY THAT THE ABOVE PLAT WAS PREPARED AND  
LOCATION AS SHOWN WAS STAKED ON THE GROUND FROM FIELD NOTES  
OF ACTUAL SURVEYS MADE BY ME OR UNDER MY SUPERVISION AND THAT  
THE SAME ARE TRUE AND CORRECT TO THE BEST OF MY KNOWLEDGE AND  
BELIEF.

REGISTERED LAND SURVEYOR  
REGISTRATION NO. 38130  
STATE OF COLORADO

REV: 5 04-12-22 T.L.L. (ADD TPZ)