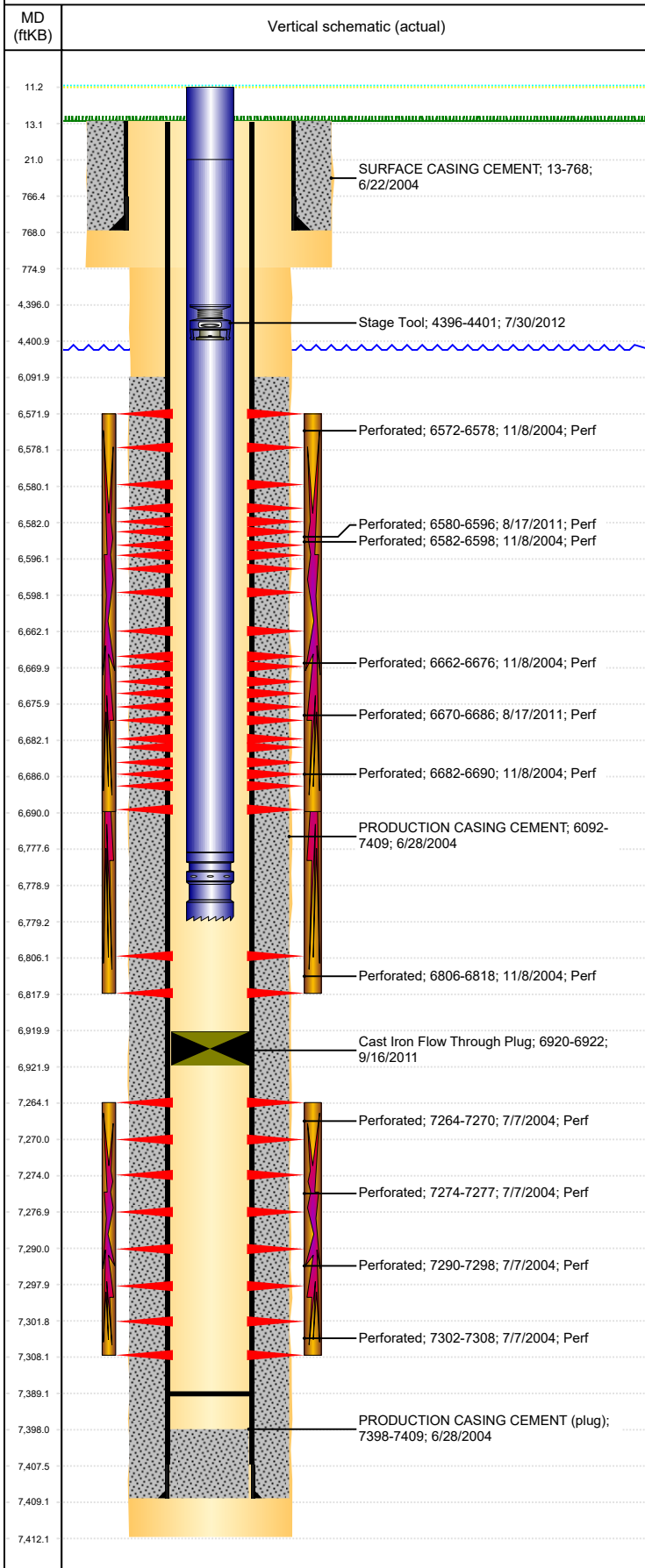




P&A Wellbore For State

Well Name: GUTTERSEN 42-29

Land, Original Hole, 9/21/2022 7:00:53 PM



Well Header

Surface UWI 0512322226	Business Unit Rockies	Gov Auth Dist	Prod Tree Loc Land
Orig. KB to Gnd (ft) 13.00	Original Spud Date 6/21/2004	Abandon Date	Well Sub-Status PR
High... N			

Comment

C/O PLUG & PUSH TO 7389'

Surface Location (Congressional)

Qtr 3 SE	Qtr 4 NE	Section 29	Twnshp 3	Twnsh... N	Range 63	Rng E... W	Latitude (°) 40.19858775 7	Longitude (°) -104.4543849
-------------	-------------	---------------	-------------	---------------	-------------	---------------	----------------------------------	-------------------------------

Wellbore Sections

Section Des	Hole Size (in)	Act Top (ftKB)	Act Btm (ftKB)
SURFACE	12 1/4	13.0	775.0
PRODUCTION	7 7/8	775.0	7,412.0

Casing Strings

Csg Des	Run Date	OD (in)	Wt/Len (lb/ft)	Grade	Top Depth (MD) (ftKB)	Set Depth (MD) (ftKB)
Surface	6/22/2004	8 5/8	24.00		13	768
Production Casing	6/28/2004	4 1/2	11.60	N-80	13	7409

Cement

Des	Start Date	Top (ftKB)	Btm (ftKB)
SURFACE CASING CEMENT	6/22/2004	13.0	768.0
PRODUCTION CASING CEMENT	6/28/2004	6,092.0	7,409.0

Zone Statuses

Zone Name	Status Date	Status	Fluid Type	Job	Prod Method
J SAND	7/19/2004	PR		DRILLING/COMPLETION - ORIGINAL, 6/21/2004...	
NIOBRARA	11/21/2004	PR		RECOMPLETION, 11/6/2004 00:00	
NIOBRARA	3/4/2012	PR		RE-FRAC, 8/10/2011 11:30	
CODELL	11/21/2004	PR		RECOMPLETION, 11/6/2004 00:00	

Perforation Data

Linked Zone	Explosive Type	Entered Shot Total	Top (ftKB)	Btm (ftKB)	Date
NIOBRARA, Original Hole		24	6,572.0	6,578.0	11/8/2004
NIOBRARA, Original Hole		36	6,580.0	6,596.0	8/17/2011
NIOBRARA, Original Hole		64	6,582.0	6,598.0	11/8/2004
NIOBRARA, Original Hole		56	6,662.0	6,676.0	11/8/2004
NIOBRARA, Original Hole		36	6,670.0	6,686.0	8/17/2011
NIOBRARA, Original Hole		32	6,682.0	6,690.0	11/8/2004
CODELL, Original Hole		48	6,806.0	6,818.0	11/8/2004
J SAND, Original Hole		24	7,264.0	7,270.0	7/7/2004
J SAND, Original Hole		12	7,274.0	7,277.0	7/7/2004
J SAND, Original Hole		32	7,290.0	7,298.0	7/7/2004
J SAND, Original Hole		24	7,302.0	7,308.0	7/7/2004

Stimulation Intervals

Zone	Start Date	Top (ftKB)	Btm (ftKB)
NIOBRARA-CODELL, Original Hole	11/9/2004	6,572.0	6,818.0
NIOBRARA, Original Hole	9/8/2011	6,572.0	6,690.0
J SAND, Original Hole	7/9/2004	7,264.0	7,308.0

Other In Hole

Run Date	Des	Make	OD (in)	Top (ftKB)	Btm (ftKB)
9/16/2011	Cast Iron Flow Through Plug		3.9	6,920.0	6,922.0
7/30/2012	Stage Tool		2	4,396.0	4,401.0

Logs

Date	Type	Depth Top (MD) (ftKB)	Btm (ftKB)
6/28/2004	COMPENSATED DENSITY	750	7,412.0
7/7/2004	CBL/CCL/GR	5,950	7,398.0
4/19/2018	GYRO	13	4,350.0

Plug Back Total Depths

Date	Type	Com	PBTD (ftKB)
11/17/2004	PLUG REMNANTS	PLUG REMNANTS	7,287
8/15/2011	PLUG REMNANTS	N2 CLEAN OUT TO THIS POINT. 81' OF RAT HOLE	7,389