

# Wellhead Closure Checklist

## COGCC Rule 911.a.(4) Environmental Site Closure Assessment Field Form

Additional attachments (optional):		Pit Closure		Tank Battery Closure	5-12-22	Flowline Closure	5-12-22	Partially Buried Vault Closure	5-12-22
------------------------------------	--	-------------	--	----------------------	---------	------------------	---------	--------------------------------	---------

Site Name & COGCC Facility Number: Roth #12-30 Date: 3-30-22 Remediation Project #: 22292

Associated Wells: 05-123-13046 Age of Site: years Number of Photos Attached: 1

Location: (GPS coordinates of wellhead or southeastern most wellhead for multiple) 40.455025 / -104.599906 Estimated Facility Size (acres):

General Condition of Site: (General observations regarding housekeeping, corrosion, waste management, etc.)  
Good Condition

USCS Soil Type: SC Estimated Depth to Groundwater: ~7-20'

Hydrocarbon Impacted Soils / Spills: (Note estimated size and if impact appears to be surficial or extends to an unknown depth)  
Petroleum hydrocarbon odor observed throughout excavation

Salt Crusted Soils or Impacted Vegetation: (Note estimated size and if impact appears to be surficial or extends to an unknown depth)  
None observed

Wellhead(s)						
Well API	05-123-13046					
Age	Years					
Condition of surface around wellhead	Good-Per Crew					
PID Readings	N/A - Excavated upon arrival					
Condition of subsurface (staining present)	Petroleum hydrocarbon odor	observed throughout excavation				
PID Readings	115.7	134.5	121.1	114.4	120.1	
Sample taken? Location/Sample ID#	WH-SS-01@5'	WH-SS-02@5'	WH-SS-03@5'	WH-SS-04@5'	WH-FS-01@6'	
Photo Number(s)	See photology					

Other observations regarding wellheads:

### Summary

Was impacted soil identified? No Yes - less than 10 cubic yards Yes - more than 10 cubic yards

Total number of samples field screened: 5 Total number of samples collected: 5

Highest PID Reading: 134.5 Total number of samples submitted to lab for analysis: 5

If more than 10 cubic yards of impacted soil were observed:

Vertical extent: > 6' Estimated spill volume: To be determined

Lateral extent: > 8' x 8' Volume of soil removed: To be determined

Is additional investigation required? Yes

Was groundwater encountered during the investigation? (No) Yes - not impacted or in contact with impacted soils Yes - groundwater impacted and/or in contact with impacted soils

Measured depth to groundwater: Was remedial groundwater removal conducted? Yes No

Date Groundwater was encountered: Commencement date of removal:

Seen on groundwater? Yes No Volume of groundwater removed prior to sampling:

Free product observed? Yes No Volume of groundwater removed post sampling:

Total number of samples collected: Total Volume of groundwater removed:

Total number of samples submitted to lab for analysis:



## **FIGURES**

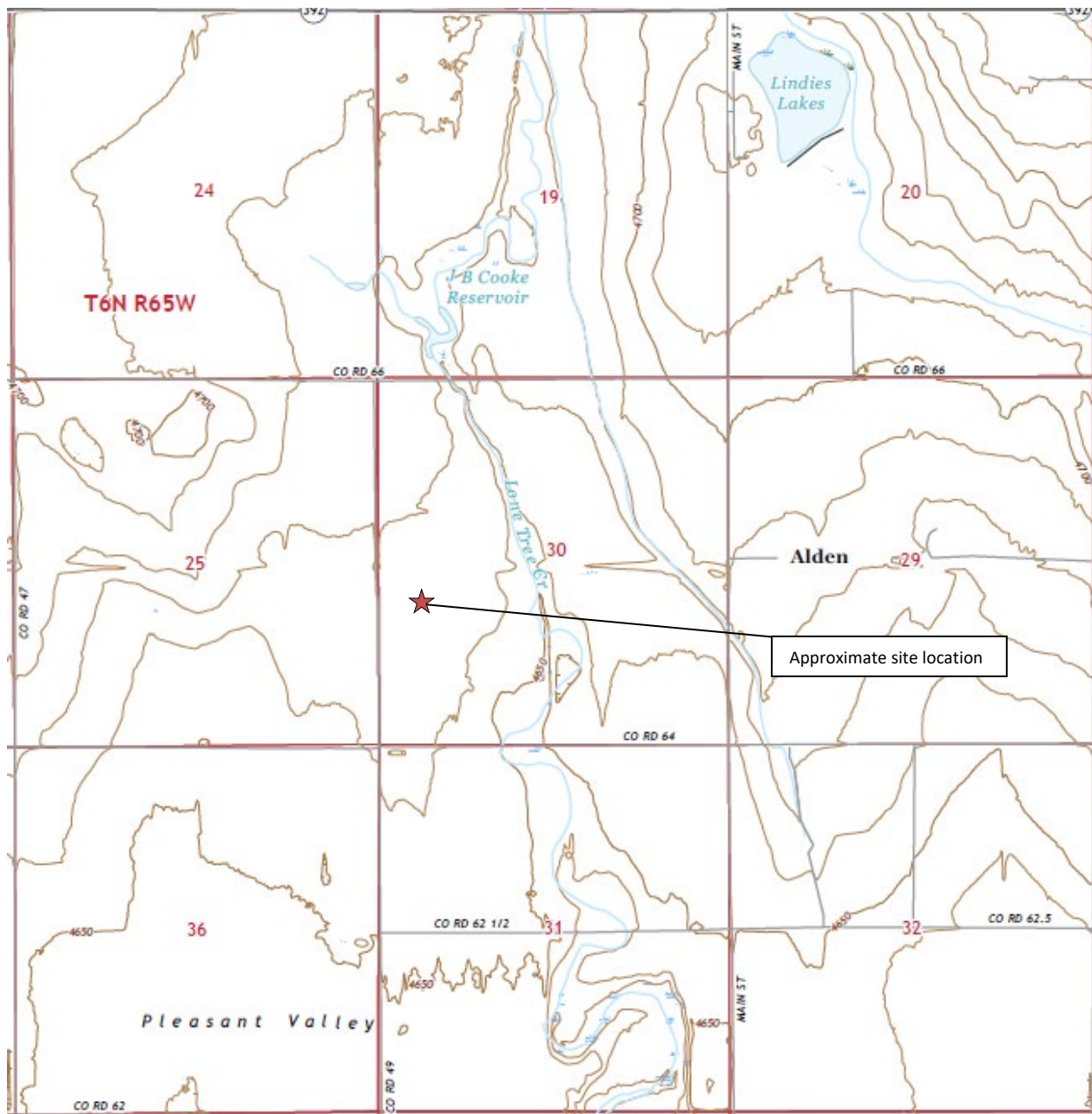
**Figure 1: Topographic Site Location Map**

**Figure 2: Aerial Site Location Map**

**Figure 3: Soil Analytical Map**

**Figure 4: Polycyclic Aromatic Hydrocarbons Map**

**Figure 5: Metals in Soil Map**



**Topographic Site Location Map**

Roth #12-30  
 Closure Assessment  
 40.455025 / -104.599906  
 NW¼ SW¼ SEC.30 T6N R64W 6PM  
 Weld County, Colorado  
 API # 05-123-13046  
 Remediation # 22292



**EAGLE**  
 ENVIRONMENTAL  
 CONSULTING, INC.

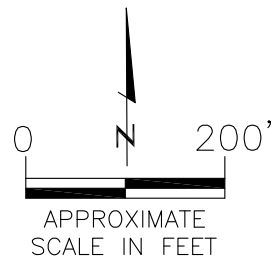
Source: USGS 7.5 Minute Topographic  
 Map, Kersey, CO Quadrangle 2022

**Figure 1**



# LEGEND

- FORMER ROTH #12-30 WELLHEAD (PLUGGED AND ABANDONED)
- ASSOCIATED SEPARATOR
- APPROXIMATE FLOWLINE LOCATION (ABANDONED IN PLACE)



## AERIAL SITE LOCATION MAP

ROTH #12-30  
CLOSURE ASSESSMENT  
40.455025 / -104.599906  
NW¼ SW¼ SEC.30 T6N R64W 6PM  
WELD COUNTY, COLORADO  
API # 05-123-13046  
REMEDATION # 22292

DATE: 09/20/22

FIG. NO.  
2

DRAWN BY:  
RH



**EAGLE**  
ENVIRONMENTAL  
CONSULTING, INC.  
8000 W 44th Ave, Wheat Ridge, CO 80033  
Ph: 303-433-0479 • F: 303-325-5449





#### LEGEND

— INITIAL ASSESSMENT BOUNDARIES

● APPROXIMATE LOCATION OF SOIL SAMPLES  
SS-02 SUBMITTED FOR LABORATORY ANALYSIS

#### PARAMETERS

##### SAMPLE LOCATION

DATE

DEPTH (FEET)

B = BENZENE (mg/kg)

T = TOLUENE (mg/kg)

E = ETHYLBENZENE (mg/kg)

X = TOTAL XYLENES (mg/kg)

G = TPH-GRO (mg/kg)

D = TPH-DRO (mg/kg)

R = TPH-RRO (mg/kg)

1,2,4-TMB = 1,2,4 TRIMETHYLBENZENE (mg/kg)

1,3,5-TMB = 1,3,5 TRIMETHYLBENZENE (mg/kg)

Brn= BORON (mg/L)

EC = SPECIFIC CONDUCTANCE (mmhos/cm)

SAR= SODIUM ADSORPTION RATIO

pH = pH (pH UNITS)

mg/kg = MILLIGRAMS PER KILOGRAM

mg/L = MILLIGRAMS PER LITER

mmhos/cm = MILLIMHOS PER CENTIMETER

TPH-GRO = TOTAL PETROLEUM HYDROCARBONS - GASOLINE RANGE ORGANICS

TPH-DRO = TOTAL PETROLEUM HYDROCARBONS - DIESEL RANGE ORGANICS

TPH-RRO = TOTAL PETROLEUM HYDROCARBONS - RESIDUAL RANGE ORGANICS

#### NOTES:

VALUES PRESENTED WITH A LESS THAN SYMBOL (<) DID NOT CONTAIN CONCENTRATIONS AT OR ABOVE LABORATORY DETECTION LIMITS

VALUES PRESENTED IN **BOLD** EXCEED COGCC TABLE 915-1 REGULATORY LIMITS

COGCC = COLORADO OIL AND GAS CONSERVATION COMMISSION

#### SOIL ANALYTICAL MAP

ROTH #12-30

CLOSURE ASSESSMENT

40.455025 / -104.599906

NW¼ SW¼ SEC.30 T6N R64W 6PM

WELD COUNTY, COLORADO

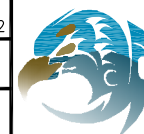
API # 05-123-13046

REMEDATION # 22292

DATE:  
05/02/22

DRAWN BY:  
GEC

FIG.  
NO. 3



**EAGLE**  
ENVIRONMENTAL  
CONSULTING, INC.

8000 W 44th Ave, Wheat Ridge, CO 80033  
Ph: 303-433-0479 • F: 303-325-5449

WH-FS-01@6'  
03/30/22  
6'  
ND = <0.00067  
1-Methylnaphthalene = 0.000685  
2-Methylnaphthalene = ND  
Acenaphthene = ND  
Anthracene = ND  
Benzo(a)anthracene = ND  
Benzo(a)pyrene = 0.000591  
Benzo(b)fluoranthene = ND  
Benzo(k)fluoranthene = ND  
Chrysene = ND  
Dibenzo(a,h)anthracene = ND  
Fluoranthene = ND  
Fluorene = 0.000607  
Indeno(1,2,3-CD)pyrene = 0.000778  
Naphthalene = ND  
Pyrene = ND

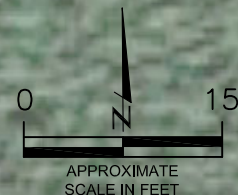
WH-SS-01@5'  
03/30/22  
5'  
ND = <0.00067  
1-Methylnaphthalene = ND  
2-Methylnaphthalene = ND  
Acenaphthene = ND  
Anthracene = ND  
Benzo(a)anthracene = ND  
Benzo(a)pyrene = ND  
Benzo(b)fluoranthene = ND  
Benzo(k)fluoranthene = ND  
Chrysene = ND  
Dibenzo(a,h)anthracene = ND  
Fluoranthene = ND  
Fluorene = ND  
Indeno(1,2,3-CD)pyrene = ND  
Naphthalene = ND  
Pyrene = ND

WH-SS-02@5'  
03/30/22  
5'  
ND = <0.00335  
1-Methylnaphthalene = ND  
2-Methylnaphthalene = ND  
Acenaphthene = ND  
Anthracene = ND  
Benzo(a)anthracene = ND  
Benzo(a)pyrene = ND  
Benzo(b)fluoranthene = ND  
Benzo(k)fluoranthene = ND  
Chrysene = ND  
Dibenzo(a,h)anthracene = ND  
Fluoranthene = ND  
Fluorene = 0.00298  
Indeno(1,2,3-CD)pyrene = ND  
Naphthalene = ND  
Pyrene = ND

WH-SS-04@5'  
03/30/22  
5'  
ND = <0.00067  
1-Methylnaphthalene = 0.000766  
2-Methylnaphthalene = ND  
Acenaphthene = 0.000885  
Anthracene = ND  
Benzo(a)anthracene = ND  
Benzo(a)pyrene = 0.000845  
Benzo(b)fluoranthene = 0.000796  
Benzo(k)fluoranthene = ND  
Chrysene = 0.0012  
Dibenzo(a,h)anthracene = ND  
Fluoranthene = 0.000884  
Fluorene = 0.00209  
Indeno(1,2,3-CD)pyrene = ND  
Naphthalene = ND  
Pyrene = 0.00121

WH-SS-03@5'  
03/30/22  
5'  
ND = <0.00335  
1-Methylnaphthalene = ND  
2-Methylnaphthalene = ND  
Acenaphthene = ND  
Anthracene = ND  
Benzo(a)anthracene = ND  
Benzo(a)pyrene = ND  
Benzo(b)fluoranthene = ND  
Benzo(k)fluoranthene = ND  
Chrysene = ND  
Dibenzo(a,h)anthracene = ND  
Fluoranthene = ND  
Fluorene = ND  
Indeno(1,2,3-CD)pyrene = ND  
Naphthalene = ND  
Pyrene = ND

WH-SS-01  
WH-SS-02  
WH-SS-03  
WH-SS-04  
WH-FS-01



#### LEGEND

— INITIAL ASSESSMENT BOUNDARIES

● APPROXIMATE LOCATION OF SOIL SAMPLES  
SUBMITTED FOR LABORATORY ANALYSIS

#### PARAMETERS

SAMPLE LOCATION  
DATE SAMPLE COLLECTED  
APPROXIMATE DEPTH

POLYCYCLIC AROMATIC HYDROCARBONS (PAHs)

#### NOTE:

CONCENTRATIONS PRESENTED IN mg/kg

mg/kg = MILLIGRAMS PER KILOGRAM

ND = NON-DETECT

#### NOTE:

VALUES PRESENTED WITH A LESS THAN SYMBOL (<) DID NOT  
CONTAIN CONCENTRATIONS AT OR ABOVE LABORATORY  
DETECTION LIMITS

VALUES PRESENTED IN **BOLD** CONTAIN CONCENTRATIONS  
EXCEEDING COGCC TABLE 915-1 REGULATORY LIMITS

COGCC = COLORADO OIL AND GAS CONSERVATION COMMISSION

#### POLYCYCLIC AROMATIC HYDROCARBONS MAP

ROTH #12-30  
CLOSURE ASSESSMENT  
40.455025 / -104.599906  
NW¼ SW¼ SEC.30 T6N R64W 6PM  
WELD COUNTY, COLORADO  
API # 05-123-13046  
REMEDIAL # 22292

DATE:  
05/02/22

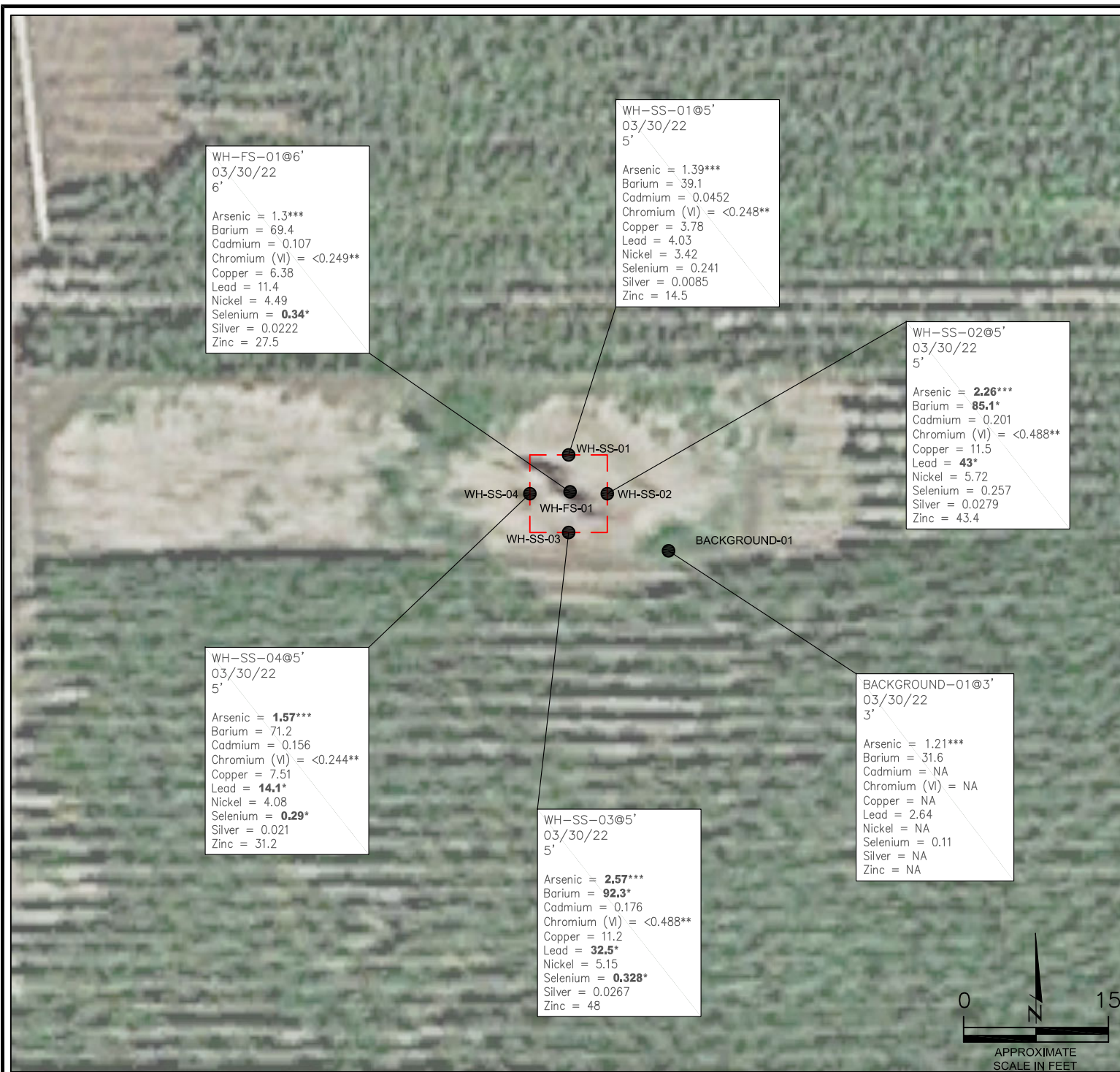
DRAWN BY:  
GEC

FIG.  
NO. 4



**EAGLE**  
ENVIRONMENTAL  
CONSULTING, INC.  
8000 W 44th Ave, Wheat Ridge, CO 80033  
Ph: 303-433-0479 • F: 303-325-5449





#### LEGEND

— INITIAL ASSESSMENT BOUNDARIES

● APPROXIMATE LOCATION OF SOIL SAMPLES  
SUBMITTED FOR LABORATORY ANALYSIS

#### PARAMETERS

SAMPLE LOCATION  
DATE SAMPLE COLLECTED  
APPROXIMATE DEPTH  
Arsenic = (mg/kg)  
Barium = (mg/kg)  
Cadmium = (mg/kg)  
Chromium (VI) = (mg/kg)  
Copper = (mg/kg)  
Lead = (mg/kg)  
Nickel = (mg/kg)  
Selenium = (mg/kg)  
Silver = (mg/kg)  
Zinc = (mg/kg)

mg/kg = MILLIGRAMS PER KILOGRAM

NA = NOT ANALYZED

#### NOTE:

VALUES PRESENTED WITH A LESS THAN SYMBOL (<) DID NOT CONTAIN CONCENTRATIONS AT/OR ABOVE LABORATORY REPORTING LIMITS AND/OR MINIMUM DETECTION LIMITS.

VALUES PRESENTED IN **BOLD** CONTAIN CONCENTRATIONS EXCEEDING COGCC TABLE 915-1 REGULATORY LIMITS

\*VALUES EXCEED COGCC TABLE 915-1 PROTECTION OF GROUNDWATER SOIL SCREENING LEVELS

\*\*ACHIEVABLE PRACTICAL QUANTITATIVE LIMITS FOR HEXAVALENT CHROMIUM (Cr VI) IN SOILS IS IN THE RANGE OF 0.1 TO 1 mg/kg.

\*\*\*ARSENIC IS NATURALLY OCCURRING IN COLORADO. THE LOCAL CLEAN-UP LEVEL (1.51 mg/kg) IS 1.25\*BACKGROUND (1.21 mg/kg)

COGCC = COLORADO OIL AND GAS CONSERVATION COMMISSION

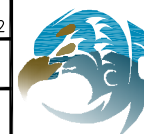
#### METALS IN SOIL MAP

ROTH #12-30  
CLOSURE ASSESSMENT  
40.455025 / -104.599906  
NW¼ SW¼ SEC.30 T6N R64W 6PM  
WELD COUNTY, COLORADO  
API # 05-123-13046  
REMEDATION # 22292

DATE:  
05/02/22

DRAWN BY:  
GEC

FIG.  
NO. 5



**EAGLE**  
ENVIRONMENTAL  
CONSULTING, INC.  
8000 W 44th Ave, Wheat Ridge, CO 80033  
Ph: 303-433-0479 • F: 303-325-5449



## **TABLES**

**Table 1: Photoionization Detector Reading Summary**

**Table 2: Soil Analytical Results Summary**

**Table 3: Polycyclic Aromatic Hydrocarbons Analytical Results Summary**

**Table 4: Metals Analytical Results Summary**



**TABLE 1**  
**PHOTOIONIZATION DETECTOR READING SUMMARY**  
**ROTH #12-30**  
**CLOSURE ASSESSMENT**  
**40.455025 / -104.599906**  
**NW1/4 SW1/4 SEC.30 T6N R64W 6PM**  
**WELD COUNTY, COLORADO**  
**API # 05-123-13046**  
**REMEDICATION # 22292**

Sample Location (Latitude/Longitude)	Date	Approximate Depth (feet)	PID Reading (ppm-v)	Lab Submission (Y/N)
WH-SS-01 @ 5' (40.455049 / -104.599926)	03/30/22	5	115.7	Y
WH-SS-02 @ 5' (40.455042 / -104.599907)	03/30/22	5	134.5	Y
WH-SS-03 @ 5' (40.455025 / -104.599928)	03/30/22	5	121.1	Y
WH-SS-04 @ 5' (40.455037 / -104.599944)	03/30/22	5	114.4	Y
WH-FS-01 @ 6' (40.455036 / -104.599929)	03/30/22	6	120.1	Y
Background-01 @ 3' (40.455022 / -104.599889)	03/30/22	3	9.0	Y
(Y/N) = Yes or No ppm-v = parts per million by volume PID = Photoionization Detector				

TABLE 2  
SOIL ANALYTICAL RESULTS SUMMARY  
ROTH #12-30  
CLOSURE ASSESSMENT  
40.455025 / -104.599906  
NW1/4 SW1/4 SEC.30 T6N R64W 6PM  
WELD COUNTY, COLORADO  
API # 05-123-13046  
REMEDATION # 22292

Sample Location (Latitude/Longitude)	Date	Approximate Depth (feet)	PID Reading (ppm-v)	Benzene (mg/kg)	Toluene (mg/kg)	Ethylbenzene (mg/kg)	Total Xylenes (mg/kg)	TPH-GRO (mg/kg)	TPH-DRO (mg/kg)	TPH-RRO (mg/kg)	1,2,4-TMB (mg/kg)	1,3,5-TMB (mg/kg)	Boron (mg/L)	Specific Conductance (mmhos/cm)	pH (pH units)	SAR
COGCC Table 915-1 Residential Screening Levels (mg/kg)				1.20	490	5.8	58	500			30	27	2	<4	6-8.3	<6
COGCC Table 915-1 Protection of Groundwater Soil Screening Levels				0.0026	0.69	0.78	9.9	--			0.0081	0.0087	--	--	--	--
WH-SS-01 @ 5' (40.455049 / -104.599926)	03/30/22	5	115.7	<0.00200	<0.00200	<0.00200	<0.00200	<0.200	<25.0	<100	<0.00200	<0.00200	<0.100	0.289	7.90	1.04
WH-SS-02 @ 5' (40.455042 / -104.599907)	03/30/22	5	134.5	<0.00200	<0.00200	<0.00200	<0.00200	<0.200	55.0	<100	<0.00200	<0.00200	0.393	0.719	7.76	0.980
WH-SS-03 @ 5' (40.455025 / -104.599928)	03/30/22	5	121.1	<0.00200	<0.00200	<0.00200	<0.00200	<0.200	46.6	<100	<0.00200	<0.00200	0.381	0.736	7.78	1.03
WH-SS-04 @ 5' (40.455037 / -104.599944)	03/30/22	5	114.4	<0.00200	<0.00200	<0.00200	<0.00200	<0.200	<25.0	<100	<0.00200	<0.00200	0.338	0.750	7.88	0.881
WH-FS-01 @ 6' (40.455036 / -104.599929)	03/30/22	6	120.1	<0.00200	<0.00200	<0.00200	<0.00200	<0.200	35.5	<100	<0.00200	<0.00200	0.216	0.867	7.82	1.08
COGCC = Colorado Oil and Gas Conservation Commission mg/kg = milligrams per kilogram mmhos/cm = millimhos per centimeter PID = Photoionization Detector ppm-v = parts per million by volume mg/L = milligrams per liter SAR = Sodium Adsorption Ratio Note: Values presented with a less than symbol (<) did not contain concentrations at or above the laboratory reporting limit. Note: Values presented in <b>BOLD</b> contained concentrations exceeding COGCC Table 915-1 Regulatory Limits																
TPH-GRO = Total Petroleum Hydrocarbons - Gasoline Range Organics TPH-DRO = Total Petroleum Hydrocarbons - Diesel Range Organics TPH-RRO = Total Petroleum Hydrocarbons - Residual Range Organics 1,2,4-TMB = 1,2,4-Trimethlybenzene 1,3,5-TMB = 1,3,5-Trimethlybenzene																

TABLE 3  
POLYCYCLIC AROMATIC HYDROCARBONS ANALYTICAL RESULTS SUMMARY  
ROTH #12-30  
CLOSURE ASSESSMENT  
40.455025 / -104.599906  
NW1/4 SW1/4 SEC.30 T6N R64W 6PM  
WELD COUNTY, COLORADO  
API # 05-123-13046  
REMEDATION # 22292

Sample Location (Latitude/Longitude)	Date	Approximate Depth (feet)	PID Reading (ppm- v)	1-Methyl- naphthalene (mg/kg)	2-Methyl- naphthalene (mg/kg)	Acenaphthene (mg/kg)	Anthracene (mg/kg)	Benzo(a)-anthracene (mg/kg)	Benzo(a)- pyrene (mg/kg)	Benzo(b)- fluoranthene (mg/kg)	Benzo(k)- fluoranthene (mg/kg)	Chrysene (mg/kg)	Dibenzo(a,h)- anthracene (mg/kg)	Fluoranthene (mg/kg)	Fluorene (mg/kg)	Indeno(1,2,3- cd)-pyrene (mg/kg)	Naphthalene (mg/kg)	Pyrene (mg/kg)
COGCC Table 915-1 Residential Screening Levels				18	24	360	1,800	1.1	0.11	1.1	11	110	0.11	240	240	1.1	2	180
COGCC Table 915-1 Protection of Groundwater Soil Screening Levels				0.006	0.019	0.55	5.8	0.011	0.24	0.3	2.9	9	0.096	8.9	0.54	0.98	0.0038	1.3
WH-SS-01 @ 5' (40.455049 / -104.599926)	03/30/22	5	115.7	<0.00067	<0.00067	<0.00067	<0.00067	<0.00067	<0.00067	<0.00067	<0.00067	<0.00067	<0.00067	<0.00067	<0.00067	<0.00067	<0.00067	<0.00067
WH-SS-02 @ 5' (40.455042 / -104.599907)	03/30/22	5	134.5	<0.00335	<0.00335	<0.00335	<0.00335	<0.00335	<0.00335	<0.00335	<0.00335	<0.00335	<0.00335	<0.00335	0.00298	<0.00335	<0.00335	<0.00335
WH-SS-03 @ 5' (40.455025 / -104.599928)	03/30/22	5	121.1	<0.00335	<0.00335	<0.00335	<0.00335	<0.00335	<0.00335	<0.00335	<0.00335	<0.00335	<0.00335	<0.00335	<0.00335	<0.00335	<0.00335	<0.00335
WH-SS-04 @ 5' (40.455037 / -104.599944)	03/30/22	5	114.4	0.000766	<0.00067	0.000885	<0.00067	<0.00067	0.000845	0.000796	<0.00067	0.0012	<0.00067	0.000884	0.00209	<0.00067	<0.00067	0.00121
WH-FS-01 @ 6' (40.455036 / -104.599929)	03/30/22	6	120.1	0.000685	<0.00067	<0.00067	<0.00067	<0.00067	0.000591	<0.00067	<0.00067	<0.00067	<0.00067	<0.00067	0.000607	0.000778	<0.00067	<0.00067
COGCC = Colorado Oil and Gas Conservation Commission mg/kg = milligrams per kilogram ppm-v = parts per million by volume Note: Values presented with a less than symbol (<) did not contain concentrations at or above the laboratory reporting limit. Note: Values presented in <b>BOLD</b> contained concentrations exceeding COGCC Table 915-1 Regulatory Limits																		
				PID = Photoionization Detector														



TABLE 4  
METALS ANALYTICAL RESULTS SUMMARY  
ROTH #12-30  
CLOSURE ASSESSMENT  
40.455025 / -104.599906  
NW1/4 SW1/4 SEC.30 T6N R64W 6PM  
WELD COUNTY, COLORADO  
API # 05-123-13046  
REMEDATION # 22292

Sample Location (Latitude/Longitude)	Date	Approximate Depth (feet)	Arsenic (mg/kg)	Barium (mg/kg)	Cadmium (mg/kg)	Hexavalent Chromium (mg/kg)	Copper (mg/kg)	Lead (mg/kg)	Nickel (mg/kg)	Selenium (mg/kg)	Silver (mg/kg)	Zinc (mg/kg)
<i>COGCC Table 915-1 Residential Screening Levels</i>			0.68***	15,000	71	0.3**	3,100	400	1,500	390	390	23,000
<i>COGCC Table 915-1 Protection of Groundwater Soil Screening Levels</i>			0.29***	82	0.38	0.00067**	46	14	26	0.26	0.8	370
<i>Local Clean-up Level</i>			1.51***	--	--	0.1 to 1**	--	--	--	--	--	--
WH-SS-01 @ 5' (40.455049 / -104.599926)	03/30/22	5	1.39***	39.1	0.0452	<0.248**	3.78	4.03	3.42	0.241	0.0085	14.5
WH-SS-02 @ 5' (40.455042 / -104.599907)	03/30/22	5	2.26***	85.1*	0.201	<0.488**	11.5	43*	5.72	0.257	0.0279	43.4
WH-SS-03 @ 5' (40.455025 / -104.599928)	03/30/22	5	2.57***	92.3*	0.176	<0.488**	11.2	32.5*	5.15	0.328*	0.0267	48
WH-SS-04 @ 5' (40.455037 / -104.599944)	03/30/22	5	1.57***	71.2	0.156	<0.244**	7.51	14.1*	4.08	0.29*	0.021	31.2
WH-FS-01 @ 6' (40.455036 / -104.599929)	03/30/22	6	1.3***	69.4	0.107	<0.249**	6.38	11.4	4.49	0.34*	0.0222	27.5
Background-01 @ 3' (40.455022 / -104.599889)	03/30/22	3	1.21***	31.6	NA	NA	NA	2.64	NA	0.11	NA	NA
COGCC = Colorado Oil and Gas Conservation Commission mg/kg = milligrams per kilogram NA = Not Analyzed Notes: Values presented with a less than symbol (<) did not contain concentrations at or above the laboratory reporting limit or minimum detection levels. Values presented in <b>BOLD</b> contained concentrations exceeding applicable COGCC Table 915-1 Regulatory Limits Values presented in <b>BOLD</b> +* contained concentrations exceeding COGCC Table 915-1 Protection of Groundwater Soil Screening Levels **Achievable practical quantitative limits for Hexavalent Chromium in soils is in the range of 0.1 to 1 mg/kg. ***Arsenic is naturally occurring in Colorado. The Local Clean-up Level (1.51 mg/kg) is 1.25*Background (1.21 mg/kg).												



## **ATTACHMENT A**

### **Photo Log**

Roth #12-30  
API # 05-123-13046  
Remediation # 22292

Wellhead Closure Assessment

March 2022



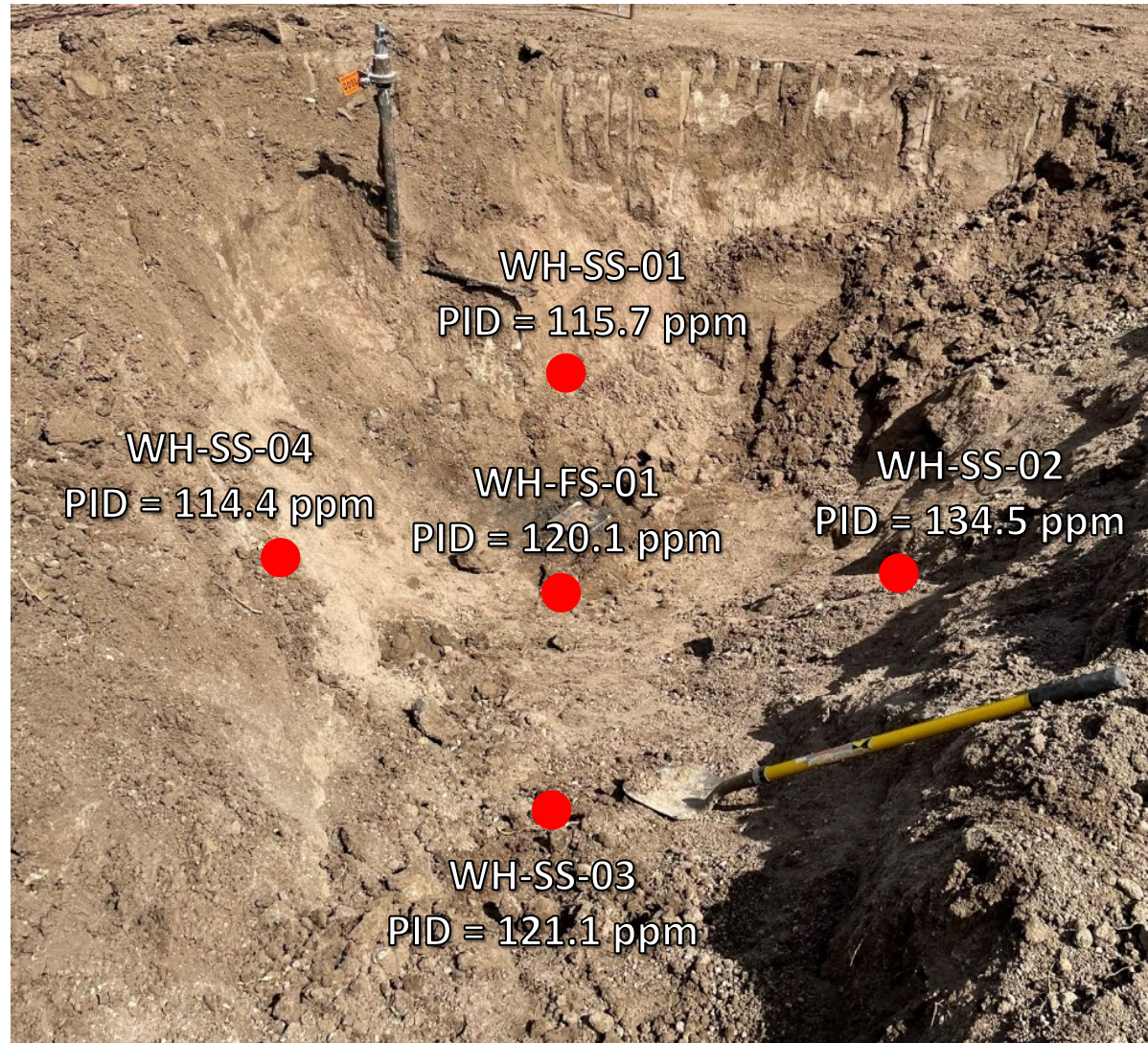
**EAGLE**  
ENVIRONMENTAL  
CONSULTING, INC.

8000 W 44th Ave, Wheat Ridge, CO 80033  
Ph: 303-433-0479 • F: 303-325-5449





## Wellhead Excavation – 03/30/22



Looking north

No petroleum hydrocarbon staining observed, odor observed



## **ATTACHMENT B**

### **Laboratory Analytical Reports**



April 21, 2022

Eagle Environmental Consulting, Inc.

Martin C Eckert III

8000 W 44th Ave

Wheat Ridge CO 80033

Project Name - Noble - Roth #12-30

Project Number - [none]

Attached are your analytical results for Noble - Roth #12-30 received by Origins Laboratory, Inc. March 30, 2022. This project is associated with Origins project number Y203800-01.

The analytical results in the following report were analyzed under the guidelines of EPA Methods. These methods are identified as follows; "SW" are defined in SW-846, "EPA" are defined in 40CFR part 136 and "SM" are defined in the most current revision of Standard Methods For the Examination of Water and Wastewater.

The analytical results apply specifically to the samples and analyses specified per the attached Chain of Custody. As such, this report shall not be reproduced except in full, without the written approval of Origin's laboratory.

Unless otherwise noted, the analytical results for all soil samples are reported on a wet weight basis. All analytical analyses were performed under NELAP guidelines unless noted by a data qualifier.

Any holding time exceedances, deviations from the method specifications or deviations from Origins Laboratory's Standard Operating Procedures are outlined in the case narrative.

Thank you for selecting Origins for your analytical needs. Please contact us with any questions concerning this report, or if we can help with anything at all.

Origins Laboratory, Inc.  
303.433.1322  
o-squad@oelabinc.com



1725 Elk Place, Denver, CO 80211 | Phone: 303.433.1322 | Fax: 303.265.9645



Eagle Environmental Consulting, Inc.  
8000 W 44th Ave  
Wheat Ridge CO 80033

Martin C Eckert III  
Project Number: [none]  
Project: Noble - Roth #12-30

## CROSS REFERENCE REPORT

Sample ID	Laboratory ID	Matrix	Date Sampled	Date Received
WH-SS-01@5'	Y203800-01	Soil	March 30, 2022 11:40	03/30/2022 16:30
WH-SS-02@5'	Y203800-02	Soil	March 30, 2022 11:42	03/30/2022 16:30
WH-SS-03@5'	Y203800-03	Soil	March 30, 2022 11:45	03/30/2022 16:30
WH-SS-04@5'	Y203800-04	Soil	March 30, 2022 11:47	03/30/2022 16:30
WH-FS-01@6'	Y203800-05	Soil	March 30, 2022 11:49	03/30/2022 16:30

Origins Laboratory, Inc.



*The results in this report apply to the samples analyzed in accordance with the chain of custody document. This analytical report must be reproduced in its entirety.*

Eagle Environmental Consulting, Inc.  
8000 W 44th Ave  
Wheat Ridge CO 80033

Martin C Eckert III  
Project Number: [none]  
Project: Noble - Roth #12-30

www.originslaboratory.com

page 1 of 1

1725 Elk Place | Denver, CO 80211 | Phone: 303.433.1322 | Fax: 303.265.9645

**ORIGINS** LABORATORY, INC

Client: Eagle Environmental Consulting  
Address: 8000 W 44th Ave  
Telephone Number: 303-433-0474  
Email Address: me@eagle-enviro.com

Project Manager: Martin Eckert III  
Project Name: Roth #12-30  
Project Number:  
Samples Collected By: EK

1203900

Sample ID Description	Date Sampled	Time Sampled	# of Containers	Preservative				Matrix	Analysis	Sample Instructions
				Unpreserved	HCl	HNO <sub>3</sub>	Other			
WH-55-01@5'	03/30/02	1140	2	X				Soil	EC, pH, by	1
WH-55-02@5'		1142							EC, pH, by	2
WH-55-03@5'		1145							EC, pH, by	3
WH-55-04@5'		1147							EC, pH, by	4
WH-55-05@5'		1149							EC, pH, by	5
										6
										7
										8
										9
										10

Relinquished By: G. L. Bynon  
Relinquished By: G. L. Bynon

Date: 03/30/02  
Date: 03/30/02

Time: 1130  
Time: 1130

Received By: KH  
Received By: KH

Date: 3/30/02  
Date: 3/30/02

Time: 1130  
Time: 1130

Turnaround Time: 24 Hr ☐ 48 Hr ☐ 72 Hr ☐ Standard ☒

Date Results Needed: 3/30/02

Temp Received: 59

8-11 to Cole

Origins Laboratory, Inc.

*Bynon*

The results in this report apply to the samples analyzed in accordance with the chain of custody document. This analytical report must be reproduced in its entirety.

Eagle Environmental Consulting, Inc.  
8000 W 44th Ave  
Wheat Ridge CO 80033

Martin C Eckert III  
Project Number: [none]  
Project: Noble - Roth #12-30

Origins Laboratory

F-012207-01-R1  
Effective Date: 01/09/12

**Sample Receipt Checklist**

Origins Work Order: Y203800 Client: Eagle  
Client Project ID: Roth 12-30

Checklist Completed by: SG Shipped Via: HD  
(UPS, FedEx, Hand Delivered, Pick-up, etc.)  
Date/time completed: 3/31/22 Airbill #: N/A

Matrix(s) Received: (Check all that apply): ☒ Soil/Solid ☐ Water ☐ Other: \_\_\_\_\_  
(Describe)

Cooler Number/Temperature: 1 5.9 °C 1 °C 1 °C 1 °C

Thermometer ID: T004

Requirement Description	Yes	No	N/A	Comments (if any)
If samples require cooling, was the temperature between 0°C to ≤ 6°C <sup>(1)</sup> ?	<input checked="" type="checkbox"/>			
Is there ice present (document if blue ice is used)	<input checked="" type="checkbox"/>			
Are custody seals present on cooler? (if so, document in comments if they are signed and dated, broken or intact)		<input checked="" type="checkbox"/>		
Are custody seals present on each sample container? (if so, document in comments if they are signed and dated, broken or intact)		<input checked="" type="checkbox"/>		
Were all samples received intact <sup>(1)</sup> ?	<input checked="" type="checkbox"/>			
Was adequate sample volume provided <sup>(1)</sup> ?	<input checked="" type="checkbox"/>			
Are short holding time analytes or samples with HTs due within 48 hours present <sup>(1)</sup> ?		<input checked="" type="checkbox"/>		
Is a chain-of-custody (COC) present and filled out completely <sup>(1)</sup> ?	<input checked="" type="checkbox"/>			
Does the COC agree with the number and type of sample bottles received <sup>(1)</sup> ?	<input checked="" type="checkbox"/>			
Do the sample IDs on the bottle labels match the COC <sup>(1)</sup> ?	<input checked="" type="checkbox"/>			
Is the COC properly relinquished by the client with date and time recorded <sup>(1)</sup> ?	<input checked="" type="checkbox"/>			
For volatiles in water – is there headspace (> ¼ inch bubble) present? If yes, contact client and note in narrative.			<input checked="" type="checkbox"/>	
Are samples preserved that require preservation and was it checked <sup>(1)</sup> ? (note ID of confirmation instrument used in comments) / (preservation is not confirmed for subcontracted analyses in order to insure sample integrity) (pH < 2 for samples preserved with HNO <sub>3</sub> , HCL, H <sub>2</sub> SO <sub>4</sub> ) / (pH > 10 for samples preserved with NaAsO <sub>2</sub> +NaOH, ZnAc+NaOH)			<input checked="" type="checkbox"/>	
Additional Comments (if any):				

<sup>(1)</sup> If NO, then contact the client before proceeding with analysis and note date/time and person contacted as well as the corrective action to in the additional comments (above) and the case narrative.

Reviewed by (Project Manager) MP Date/Time Reviewed 4/1/22

Origins Laboratory, Inc.

*J. Bynon*

The results in this report apply to the samples analyzed in accordance with the chain of custody document. This analytical report must be reproduced in its entirety.



Eagle Environmental Consulting, Inc.  
8000 W 44th Ave  
Wheat Ridge CO 80033

Martin C Eckert III  
Project Number: [none]  
Project: Noble - Roth #12-30

WH-SS-01@5'

3/30/2022 11:40:00AM

Analyte	Result	Min Detection Limit	Reporting Limit	Units	Dilution	Batch	Prepared	Analyzed	Notes
---------	--------	---------------------	-----------------	-------	----------	-------	----------	----------	-------

Origins Laboratory, Inc.  
Y203800-01 (Soil)

## Boron (DTPA Sorbitol)

Boron	ND	0.100	mg/L	1	B2C3125	03/31/2022	04/01/2022	
-------	----	-------	------	---	---------	------------	------------	--

## DRO/ORO by EPA 8015D

Diesel (C10-C28)	ND	25.0	mg/kg	1	B2C3107	03/31/2022	04/05/2022	U
Residual Range Organics (C28-C40)	ND	100	"	"	"	"	"	U

Surrogate: o-Terphenyl	126 %	50-150			"	"	"	
------------------------	-------	--------	--	--	---	---	---	--

## GBTEX+TMBs by 8260D

1,2,4-Trimethylbenzene	ND	0.00200	mg/kg	1	B2D0507	04/05/2022	04/07/2022	U
1,3,5-Trimethylbenzene	ND	0.00200	"	"	"	"	"	U
Benzene	ND	0.00200	"	"	"	"	"	U
Ethylbenzene	ND	0.00200	"	"	"	"	"	U
Toluene	ND	0.00200	"	"	"	"	"	U
Xylenes, total	ND	0.00200	"	"	"	"	"	U
Gasoline Range Hydrocarbons	ND	0.200	"	"	"	"	"	U

Surrogate: 1,2-Dichloroethane-d4	116 %	70-130			"	"	"	
----------------------------------	-------	--------	--	--	---	---	---	--

Origins Laboratory, Inc.



The results in this report apply to the samples analyzed in accordance with the chain of custody document. This analytical report must be reproduced in its entirety.

Eagle Environmental Consulting, Inc.  
8000 W 44th Ave  
Wheat Ridge CO 80033

Martin C Eckert III  
Project Number: [none]  
Project: Noble - Roth #12-30

WH-SS-01@5'

3/30/2022 11:40:00AM

Analyte	Result	Min Detection Limit	Reporting Limit	Units	Dilution	Batch	Prepared	Analyzed	Notes
---------	--------	---------------------	-----------------	-------	----------	-------	----------	----------	-------

Origins Laboratory, Inc.  
Y203800-01 (Soil)

## GBTEX+TMBs by 8260D

Surrogate: Toluene-d8	93.6 %	70-130	B2D05 07	04/05/2022	04/07/2022
Surrogate: 4-Bromofluorobenzene	98.3 %	70-130	"	"	"

## Metals by Saturated Paste by EPA 6010

Calcium	1.15	0.499	meq/L	10	[CALC]	04/01/2022	04/05/2022
Magnesium	ND	0.823	"	"	"	"	"
Sodium	0.944	0.435	"	"	"	"	"

## PAH by 8270D SIM

1-Methylnaphthalene	ND	0.000364	0.00067	mg/Kg	1	L610198	04/12/2022	04/15/2022
2-Methylnaphthalene	ND	0.000645	0.00067	"	"	"	"	"
Acenaphthene	ND	0.000304	0.00067	"	"	"	"	"
Anthracene	ND	0.000334	0.00067	"	"	"	"	"
Benzo(a)anthracene	ND	0.000493	0.00067	"	"	"	"	"
Benzo(a)pyrene	ND	0.000468	0.00067	"	"	"	"	"
Benzo(b)fluoranthene	ND	0.000585	0.00067	"	"	"	"	"
Benzo(k)fluoranthene	ND	0.000437	0.00067	"	"	"	"	"
Chrysene	ND	0.000624	0.00067	"	"	"	"	"
Dibenz(a,h)anthracene	ND	0.000614	0.00067	"	"	"	"	"
Fluoranthene	ND	0.000394	0.00067	"	"	"	"	"

Origins Laboratory, Inc.



The results in this report apply to the samples analyzed in accordance with the chain of custody document. This analytical report must be reproduced in its entirety.

Eagle Environmental Consulting, Inc.  
8000 W 44th Ave  
Wheat Ridge CO 80033

Martin C Eckert III  
Project Number: [none]  
Project: Noble - Roth #12-30

## WH-SS-01@5'

3/30/2022 11:40:00AM

Analyte	Result	Min Detection Limit	Reporting Limit	Units	Dilution	Batch	Prepared	Analyzed	Notes
---------	--------	---------------------	-----------------	-------	----------	-------	----------	----------	-------

## Waypoint Analytical, Inc. Y203800-01 (Soil)

### PAH by 8270D SIM

Fluorene	ND	0.000286	0.00067	mg/Kg	1	L610198	04/12/2022	04/15/2022
Indeno(1,2,3-cd)pyrene	ND	0.000627	0.00067	"	"	"	"	"
Naphthalene	ND	0.000484	0.00067	"	"	"	"	"
Pyrene	ND	0.000643	0.00067	"	"	"	"	"

Surrogate: 2-Fluorobiphenyl	60.4 %	33-115	"	"	"
Surrogate: 4-Terphenyl-d14	66.4 %	33-122	"	"	"
Surrogate: Nitrobenzene-d5	42 %	29-110	"	"	"

### pH in Soil by 9045D

pH	7.90	pH Units	1	B2D0407	04/04/2022	04/05/2022
----	------	----------	---	---------	------------	------------

### SAR by 20B Saturated Paste

SAR	1.04	SAR	1	B2D0108	04/01/2022	04/05/2022
-----	------	-----	---	---------	------------	------------

### Specific Conductance Mod. 9050A

Specific Conductance (EC)	0.289	0.00500	mmhos/cm	1	B2D0406	04/04/2022	04/05/2022
---------------------------	-------	---------	----------	---	---------	------------	------------

### Total Metals by 6020B

Arsenic	1.39	0.0855	0.25	mg/Kg	5	L610159	04/11/2022	04/15/2022
---------	------	--------	------	-------	---	---------	------------	------------

Origins Laboratory, Inc.



The results in this report apply to the samples analyzed in accordance with the chain of custody document. This analytical report must be reproduced in its entirety.



Eagle Environmental Consulting, Inc.  
8000 W 44th Ave  
Wheat Ridge CO 80033

Martin C Eckert III  
Project Number: [none]  
Project: Noble - Roth #12-30

WH-SS-01@5'

3/30/2022 11:40:00AM

Analyte	Result	Min Detection Limit	Reporting Limit	Units	Dilution	Batch	Prepared	Analyzed	Notes
---------	--------	---------------------	-----------------	-------	----------	-------	----------	----------	-------

Waypoint Analytical, Inc.  
Y203800-01 (Soil)

## Total Metals by 6020B

Barium	39.1	0.042	0.25	mg/Kg	5	L610159	04/11/2022	04/15/2022	
Cadmium	0.0452	0.0259	0.25	"	"	"	"	"	J
Copper	3.78	0.0806	0.25	"	"	"	"	"	
Lead	4.03	0.031	0.25	"	"	"	"	"	
Nickel	3.42	0.0633	0.25	"	"	"	"	"	
Selenium	0.241	0.103	0.25	"	"	"	"	"	J
Silver	0.0085	0.0067	0.25	"	"	"	"	"	J
Zinc	14.5	0.534	2.5	"	"	"	"	"	

## Total Metals by 7196A

Chromium, Hexavalent	ND	0.248	0.51	mg/Kg	1	L611215	03/30/2022	04/16/2022	
----------------------	----	-------	------	-------	---	---------	------------	------------	--

Origins Laboratory, Inc.



The results in this report apply to the samples analyzed in accordance with the chain of custody document. This analytical report must be reproduced in its entirety.

Eagle Environmental Consulting, Inc.  
8000 W 44th Ave  
Wheat Ridge CO 80033

Martin C Eckert III  
Project Number: [none]  
Project: Noble - Roth #12-30

WH-SS-02@5'

3/30/2022 11:42:00AM

Analyte	Result	Min Detection Limit	Reporting Limit	Units	Dilution	Batch	Prepared	Analyzed	Notes
---------	--------	---------------------	-----------------	-------	----------	-------	----------	----------	-------

**Origins Laboratory, Inc.**  
**Y203800-02 (Soil)**

**Boron (DTPA Sorbitol)**

Boron	0.393	0.0981	mg/L	1	B2D0110	04/01/2022	04/04/2022	
-------	-------	--------	------	---	---------	------------	------------	--

**DRO/ORO by EPA 8015D**

Diesel (C10-C28)	55.0	25.0	mg/kg	1	B2C3107	03/31/2022	04/05/2022	
Residual Range Organics (C28-C40)	ND	100	"	"	"	"	"	U

Surrogate: o-Terphenyl	129 %	50-150			"	"	"	
------------------------	-------	--------	--	--	---	---	---	--

**GBTEX+TMBs by 8260D**

1,2,4-Trimethylbenzene	ND	0.00200	mg/kg	1	B2D0507	04/05/2022	04/08/2022	U
1,3,5-Trimethylbenzene	ND	0.00200	"	"	"	"	"	U
Benzene	ND	0.00200	"	"	"	"	"	U
Ethylbenzene	ND	0.00200	"	"	"	"	"	U
Toluene	ND	0.00200	"	"	"	"	"	U
Xylenes, total	ND	0.00200	"	"	"	"	"	U
Gasoline Range Hydrocarbons	ND	0.200	"	"	"	"	"	U

Surrogate: 1,2-Dichloroethane-d4	117 %	70-130			"	"	"	
Surrogate: Toluene-d8	94.5 %	70-130			"	"	"	

Origins Laboratory, Inc.



The results in this report apply to the samples analyzed in accordance with the chain of custody document. This analytical report must be reproduced in its entirety.

Eagle Environmental Consulting, Inc.  
8000 W 44th Ave  
Wheat Ridge CO 80033

Martin C Eckert III  
Project Number: [none]  
Project: Noble - Roth #12-30

WH-SS-02@5'

3/30/2022 11:42:00AM

Analyte	Result	Min Detection Limit	Reporting Limit	Units	Dilution	Batch	Prepared	Analyzed	Notes
---------	--------	---------------------	-----------------	-------	----------	-------	----------	----------	-------

Origins Laboratory, Inc.  
Y203800-02 (Soil)

## GBTEX+TMBs by 8260D

Surrogate: 4-Bromofluorobenzene	98.1 %	70-130	B2D05 07	04/05/2022	04/08/2022
---------------------------------	--------	--------	-------------	------------	------------

## Metals by Saturated Paste by EPA 6010

Calcium	3.29	0.499	meq/L	10	[CALC]	04/01/2022	04/05/2022
Magnesium	1.65	0.823	"	"	"	"	"
Sodium	1.54	0.435	"	"	"	"	"

## PAH by 8270D SIM

1-Methylnaphthalene	ND	0.00182	0.00335	mg/Kg	5	L610198	04/12/2022	04/15/2022
2-Methylnaphthalene	ND	0.00323	0.00335	"	"	"	"	"
Acenaphthene	ND	0.00152	0.00335	"	"	"	"	"
Anthracene	ND	0.00167	0.00335	"	"	"	"	"
Benzo(a)anthracene	ND	0.00247	0.00335	"	"	"	"	"
Benzo(a)pyrene	ND	0.00234	0.00335	"	"	"	"	"
Benzo(b)fluoranthene	ND	0.00293	0.00335	"	"	"	"	"
Benzo(k)fluoranthene	ND	0.00219	0.00335	"	"	"	"	"
Chrysene	ND	0.00312	0.00335	"	"	"	"	"
Dibenz(a,h)anthracene	ND	0.00307	0.00335	"	"	"	"	"
Fluoranthene	ND	0.00197	0.00335	"	"	"	"	"
Fluorene	0.00298	0.00143	0.00335	"	"	"	"	"

J

Origins Laboratory, Inc.



The results in this report apply to the samples analyzed in accordance with the chain of custody document. This analytical report must be reproduced in its entirety.



Eagle Environmental Consulting, Inc.  
8000 W 44th Ave  
Wheat Ridge CO 80033

Martin C Eckert III  
Project Number: [none]  
Project: Noble - Roth #12-30

## WH-SS-02@5'

3/30/2022 11:42:00AM

Analyte	Result	Min Detection Limit	Reporting Limit	Units	Dilution	Batch	Prepared	Analyzed	Notes
---------	--------	---------------------	-----------------	-------	----------	-------	----------	----------	-------

## Waypoint Analytical, Inc. Y203800-02 (Soil)

### PAH by 8270D SIM

Indeno(1,2,3-cd)pyrene	ND	0.00314	0.00335	mg/Kg	5	L610198	04/12/2022	04/15/2022
Naphthalene	ND	0.00242	0.00335	"	"	"	"	"
Pyrene	ND	0.00322	0.00335	"	"	"	"	"

Surrogate: 2-Fluorobiphenyl	67 %	33-115	"	"	"
Surrogate: 4-Terphenyl-d14	73.3 %	33-122	"	"	"
Surrogate: Nitrobenzene-d5	48.3 %	29-110	"	"	"

### pH in Soil by 9045D

pH	7.76	pH Units	1	B2D0407	04/04/2022	04/05/2022
----	------	----------	---	---------	------------	------------

### SAR by 20B Saturated Paste

SAR	0.980	SAR	1	B2D0108	04/01/2022	04/05/2022
-----	-------	-----	---	---------	------------	------------

### Specific Conductance Mod. 9050A

Specific Conductance (EC)	0.719	0.00500	mmhos/cm	1	B2D0406	04/04/2022	04/05/2022
---------------------------	-------	---------	----------	---	---------	------------	------------

### Total Metals by 6020B

Arsenic	2.26	0.0855	0.25	mg/Kg	5	L610159	04/11/2022	04/15/2022
Barium	85.1	0.042	0.25	"	"	"	"	"

Origins Laboratory, Inc.



The results in this report apply to the samples analyzed in accordance with the chain of custody document. This analytical report must be reproduced in its entirety.

Eagle Environmental Consulting, Inc.  
8000 W 44th Ave  
Wheat Ridge CO 80033

Martin C Eckert III  
Project Number: [none]  
Project: Noble - Roth #12-30

WH-SS-02@5'

3/30/2022 11:42:00AM

Analyte	Result	Min Detection Limit	Reporting Limit	Units	Dilution	Batch	Prepared	Analyzed	Notes
---------	--------	---------------------	-----------------	-------	----------	-------	----------	----------	-------

Waypoint Analytical, Inc.  
Y203800-02 (Soil)

## Total Metals by 6020B

Cadmium	0.201	0.0259	0.25	mg/Kg	5	L610159	04/11/2022	04/15/2022	J
Copper	11.5	0.0806	0.25	"	"	"	"	"	
Lead	43	0.031	0.25	"	"	"	"	"	
Nickel	5.72	0.0633	0.25	"	"	"	"	"	
Selenium	0.257	0.103	0.25	"	"	"	"	"	
Silver	0.0279	0.0067	0.25	"	"	"	"	"	J
Zinc	43.4	0.534	2.5	"	"	"	"	"	

## Total Metals by 7196A

Chromium, Hexavalent	ND	0.488	1	mg/Kg	2	L611215	03/30/2022	04/16/2022	
----------------------	----	-------	---	-------	---	---------	------------	------------	--

Origins Laboratory, Inc.



The results in this report apply to the samples analyzed in accordance with the chain of custody document. This analytical report must be reproduced in its entirety.

Eagle Environmental Consulting, Inc.  
8000 W 44th Ave  
Wheat Ridge CO 80033

Martin C Eckert III  
Project Number: [none]  
Project: Noble - Roth #12-30

WH-SS-03@5'

3/30/2022 11:45:00AM

Analyte	Result	Min Detection Limit	Reporting Limit	Units	Dilution	Batch	Prepared	Analyzed	Notes
---------	--------	---------------------	-----------------	-------	----------	-------	----------	----------	-------

Origins Laboratory, Inc.  
Y203800-03 (Soil)

## Boron (DTPA Sorbitol)

Boron	0.381	0.100	mg/L	1	B2D0110	04/01/2022	04/04/2022	
-------	-------	-------	------	---	---------	------------	------------	--

## DRO/ORO by EPA 8015D

Diesel (C10-C28)	46.6	25.0	mg/kg	1	B2C3107	03/31/2022	04/05/2022	
Residual Range Organics (C28-C40)	ND	100	"	"	"	"	"	U

Surrogate: o-Terphenyl	138 %	50-150	"	"	"	"	"	
------------------------	-------	--------	---	---	---	---	---	--

## GBTEX+TMBs by 8260D

1,2,4-Trimethylbenzene	ND	0.00200	mg/kg	1	B2D0507	04/05/2022	04/08/2022	U
1,3,5-Trimethylbenzene	ND	0.00200	"	"	"	"	"	U
Benzene	ND	0.00200	"	"	"	"	"	U
Ethylbenzene	ND	0.00200	"	"	"	"	"	U
Toluene	ND	0.00200	"	"	"	"	"	U
Xylenes, total	ND	0.00200	"	"	"	"	"	U
Gasoline Range Hydrocarbons	ND	0.200	"	"	"	"	"	U

Surrogate: 1,2-Dichloroethane-d4	119 %	70-130	"	"	"	"	"	
Surrogate: Toluene-d8	94.8 %	70-130	"	"	"	"	"	

Origins Laboratory, Inc.



The results in this report apply to the samples analyzed in accordance with the chain of custody document. This analytical report must be reproduced in its entirety.

Eagle Environmental Consulting, Inc.  
8000 W 44th Ave  
Wheat Ridge CO 80033

Martin C Eckert III  
Project Number: [none]  
Project: Noble - Roth #12-30

WH-SS-03@5'

3/30/2022 11:45:00AM

Analyte	Result	Min Detection Limit	Reporting Limit	Units	Dilution	Batch	Prepared	Analyzed	Notes
---------	--------	---------------------	-----------------	-------	----------	-------	----------	----------	-------

Origins Laboratory, Inc.  
Y203800-03 (Soil)

## GBTEX+TMBs by 8260D

Surrogate: 4-Bromofluorobenzene	98.5 %	70-130	B2D05 07	04/05/2022	04/08/2022
---------------------------------	--------	--------	-------------	------------	------------

## Metals by Saturated Paste by EPA 6010

Calcium	3.37	0.499	meq/L	10	[CALC]	04/01/2022	04/05/2022
Magnesium	1.86	0.823	"	"	"	"	"
Sodium	1.67	0.435	"	"	"	"	"

## PAH by 8270D SIM

1-Methylnaphthalene	ND	0.00182	0.00335	mg/Kg	5	L610198	04/12/2022	04/15/2022
2-Methylnaphthalene	ND	0.00323	0.00335	"	"	"	"	"
Acenaphthene	ND	0.00152	0.00335	"	"	"	"	"
Anthracene	ND	0.00167	0.00335	"	"	"	"	"
Benzo(a)anthracene	ND	0.00247	0.00335	"	"	"	"	"
Benzo(a)pyrene	ND	0.00234	0.00335	"	"	"	"	"
Benzo(b)fluoranthene	ND	0.00293	0.00335	"	"	"	"	"
Benzo(k)fluoranthene	ND	0.00219	0.00335	"	"	"	"	"
Chrysene	ND	0.00312	0.00335	"	"	"	"	"
Dibenz(a,h)anthracene	ND	0.00307	0.00335	"	"	"	"	"
Fluoranthene	ND	0.00197	0.00335	"	"	"	"	"
Fluorene	ND	0.00143	0.00335	"	"	"	"	"

Origins Laboratory, Inc.



The results in this report apply to the samples analyzed in accordance with the chain of custody document. This analytical report must be reproduced in its entirety.

Eagle Environmental Consulting, Inc.  
8000 W 44th Ave  
Wheat Ridge CO 80033

Martin C Eckert III  
Project Number: [none]  
Project: Noble - Roth #12-30

WH-SS-03@5'

3/30/2022 11:45:00AM

Analyte	Result	Min Detection Limit	Reporting Limit	Units	Dilution	Batch	Prepared	Analyzed	Notes
---------	--------	---------------------	-----------------	-------	----------	-------	----------	----------	-------

Waypoint Analytical, Inc.  
Y203800-03 (Soil)

## PAH by 8270D SIM

Indeno(1,2,3-cd)pyrene	ND	0.00314	0.00335	mg/Kg	5	L610198	04/12/2022	04/15/2022
Naphthalene	ND	0.00242	0.00335	"	"	"	"	"
Pyrene	ND	0.00322	0.00335	"	"	"	"	"

Surrogate: 2-Fluorobiphenyl	68 %		33-115			"	"	"
Surrogate: 4-Terphenyl-d14	74.6 %		33-122			"	"	"
Surrogate: Nitrobenzene-d5	49.2 %		29-110			"	"	"

## pH in Soil by 9045D

pH	7.78			pH Units	1	B2D0407	04/04/2022	04/05/2022
----	------	--	--	----------	---	---------	------------	------------

## SAR by 20B Saturated Paste

SAR	1.03			SAR	1	B2D0108	04/01/2022	04/05/2022
-----	------	--	--	-----	---	---------	------------	------------

## Specific Conductance Mod. 9050A

Specific Conductance (EC)	0.736		0.00500	mmhos/cm	1	B2D0406	04/04/2022	04/05/2022
---------------------------	-------	--	---------	----------	---	---------	------------	------------

## Total Metals by 6020B

Arsenic	2.57	0.0855	0.25	mg/Kg	5	L610159	04/11/2022	04/15/2022
Barium	92.3	0.042	0.25	"	"	"	"	"

Origins Laboratory, Inc.



The results in this report apply to the samples analyzed in accordance with the chain of custody document. This analytical report must be reproduced in its entirety.



Eagle Environmental Consulting, Inc.  
8000 W 44th Ave  
Wheat Ridge CO 80033

Martin C Eckert III  
Project Number: [none]  
Project: Noble - Roth #12-30

WH-SS-03@5'

3/30/2022 11:45:00AM

Analyte	Result	Min Detection Limit	Reporting Limit	Units	Dilution	Batch	Prepared	Analyzed	Notes
---------	--------	---------------------	-----------------	-------	----------	-------	----------	----------	-------

Waypoint Analytical, Inc.  
Y203800-03 (Soil)

## Total Metals by 6020B

Cadmium	0.176	0.0259	0.25	mg/Kg	5	L610159	04/11/2022	04/15/2022	J
Copper	11.2	0.0806	0.25	"	"	"	"	"	
Lead	32.5	0.031	0.25	"	"	"	"	"	
Nickel	5.15	0.0633	0.25	"	"	"	"	"	
Selenium	0.328	0.103	0.25	"	"	"	"	"	
Silver	0.0267	0.0067	0.25	"	"	"	"	"	J
Zinc	48	0.534	2.5	"	"	"	"	"	

## Total Metals by 7196A

Chromium, Hexavalent	ND	0.488	1	mg/Kg	2	L611215	03/30/2022	04/16/2022	
----------------------	----	-------	---	-------	---	---------	------------	------------	--

Origins Laboratory, Inc.



The results in this report apply to the samples analyzed in accordance with the chain of custody document. This analytical report must be reproduced in its entirety.

Eagle Environmental Consulting, Inc.  
8000 W 44th Ave  
Wheat Ridge CO 80033

Martin C Eckert III  
Project Number: [none]  
Project: Noble - Roth #12-30

WH-SS-04@5'

3/30/2022 11:47:00AM

Analyte	Result	Min Detection Limit	Reporting Limit	Units	Dilution	Batch	Prepared	Analyzed	Notes
---------	--------	---------------------	-----------------	-------	----------	-------	----------	----------	-------

Origins Laboratory, Inc.  
Y203800-04 (Soil)

## Boron (DTPA Sorbitol)

Boron	0.338	0.0994	mg/L	1	B2D0110	04/01/2022	04/04/2022	
-------	-------	--------	------	---	---------	------------	------------	--

## DRO/ORO by EPA 8015D

Diesel (C10-C28)	ND	25.0	mg/kg	1	B2C3107	03/31/2022	04/05/2022	U
Residual Range Organics (C28-C40)	ND	100	"	"	"	"	"	U

Surrogate: o-Terphenyl	115 %	50-150	"	"	"	"	"
------------------------	-------	--------	---	---	---	---	---

## GBTEX+TMBs by 8260D

1,2,4-Trimethylbenzene	ND	0.00200	mg/kg	1	B2D0507	04/05/2022	04/08/2022	U
1,3,5-Trimethylbenzene	ND	0.00200	"	"	"	"	"	U
Benzene	ND	0.00200	"	"	"	"	"	U
Ethylbenzene	ND	0.00200	"	"	"	"	"	U
Toluene	ND	0.00200	"	"	"	"	"	U
Xylenes, total	ND	0.00200	"	"	"	"	"	U
Gasoline Range Hydrocarbons	ND	0.200	"	"	"	"	"	U

Surrogate: 1,2-Dichloroethane-d4	117 %	70-130	"	"	"	"	"
----------------------------------	-------	--------	---	---	---	---	---

Origins Laboratory, Inc.



The results in this report apply to the samples analyzed in accordance with the chain of custody document. This analytical report must be reproduced in its entirety.

Eagle Environmental Consulting, Inc.  
8000 W 44th Ave  
Wheat Ridge CO 80033

Martin C Eckert III  
Project Number: [none]  
Project: Noble - Roth #12-30

WH-SS-04@5'

3/30/2022 11:47:00AM

Analyte	Result	Min Detection Limit	Reporting Limit	Units	Dilution	Batch	Prepared	Analyzed	Notes
---------	--------	---------------------	-----------------	-------	----------	-------	----------	----------	-------

Origins Laboratory, Inc.  
Y203800-04 (Soil)

## GBTEX+TMBs by 8260D

Surrogate: Toluene-d8	93.6 %	70-130	B2D05 07	04/05/2022	04/08/2022
Surrogate: 4-Bromofluorobenzene	98.2 %	70-130	"	"	"

## Metals by Saturated Paste by EPA 6010

Calcium	3.85	0.499	meq/L	10	[CALC]	04/01/2022	04/05/2022
Magnesium	2.06	0.823	"	"	"	"	"
Sodium	1.51	0.435	"	"	"	"	"

## PAH by 8270D SIM

1-Methylnaphthalene	0.000766	0.000364	0.00067	mg/Kg	1	L610198	04/12/2022	04/15/2022
2-Methylnaphthalene	ND	0.000645	0.00067	"	"	"	"	"
Acenaphthene	0.000885	0.000304	0.00067	"	"	"	"	"
Anthracene	ND	0.000334	0.00067	"	"	"	"	"
Benzo(a)anthracene	ND	0.000493	0.00067	"	"	"	"	"
Benzo(a)pyrene	0.000845	0.000468	0.00067	"	"	"	"	"
Benzo(b)fluoranthene	0.000796	0.000585	0.00067	"	"	"	"	"
Benzo(k)fluoranthene	ND	0.000437	0.00067	"	"	"	"	"
Chrysene	0.0012	0.000624	0.00067	"	"	"	"	"
Dibenz(a,h)anthracene	ND	0.000614	0.00067	"	"	"	"	"
Fluoranthene	0.000884	0.000394	0.00067	"	"	"	"	"
Fluorene	0.00209	0.000286	0.00067	"	"	"	"	"

Origins Laboratory, Inc.



The results in this report apply to the samples analyzed in accordance with the chain of custody document. This analytical report must be reproduced in its entirety.

Eagle Environmental Consulting, Inc.  
8000 W 44th Ave  
Wheat Ridge CO 80033

Martin C Eckert III  
Project Number: [none]  
Project: Noble - Roth #12-30

WH-SS-04@5'

3/30/2022 11:47:00AM

Analyte	Result	Min Detection Limit	Reporting Limit	Units	Dilution	Batch	Prepared	Analyzed	Notes
---------	--------	---------------------	-----------------	-------	----------	-------	----------	----------	-------

Waypoint Analytical, Inc.  
Y203800-04 (Soil)

## PAH by 8270D SIM

Indeno(1,2,3-cd)pyrene	ND	0.000627	0.00067	mg/Kg	1	L610198	04/12/2022	04/15/2022
Naphthalene	ND	0.000484	0.00067	"	"	"	"	"
Pyrene	0.00121	0.000643	0.00067	"	"	"	"	"

Surrogate: 2-Fluorobiphenyl	63.2 %		33-115			"	"	"
Surrogate: 4-Terphenyl-d14	61.4 %		33-122			"	"	"
Surrogate: Nitrobenzene-d5	48.6 %		29-110			"	"	"

## pH in Soil by 9045D

pH	7.88			pH Units	1	B2D0407	04/04/2022	04/05/2022
----	------	--	--	----------	---	---------	------------	------------

## SAR by 20B Saturated Paste

SAR	0.881			SAR	1	B2D0108	04/01/2022	04/05/2022
-----	-------	--	--	-----	---	---------	------------	------------

## Specific Conductance Mod. 9050A

Specific Conductance (EC)	0.750		0.00500	mmhos/cm	1	B2D0406	04/04/2022	04/05/2022
---------------------------	-------	--	---------	----------	---	---------	------------	------------

## Total Metals by 6020B

Arsenic	1.57	0.0855	0.25	mg/Kg	5	L610159	04/11/2022	04/15/2022
Barium	71.2	0.042	0.25	"	"	"	"	"

Origins Laboratory, Inc.



The results in this report apply to the samples analyzed in accordance with the chain of custody document. This analytical report must be reproduced in its entirety.

Eagle Environmental Consulting, Inc.  
8000 W 44th Ave  
Wheat Ridge CO 80033

Martin C Eckert III  
Project Number: [none]  
Project: Noble - Roth #12-30

WH-SS-04@5'

3/30/2022 11:47:00AM

Analyte	Result	Min Detection Limit	Reporting Limit	Units	Dilution	Batch	Prepared	Analyzed	Notes
---------	--------	---------------------	-----------------	-------	----------	-------	----------	----------	-------

Waypoint Analytical, Inc.  
Y203800-04 (Soil)

## Total Metals by 6020B

Cadmium	0.156	0.0259	0.25	mg/Kg	5	L610159	04/11/2022	04/15/2022	J
Copper	7.51	0.0806	0.25	"	"	"	"	"	
Lead	14.1	0.031	0.25	"	"	"	"	"	
Nickel	4.08	0.0633	0.25	"	"	"	"	"	
Selenium	0.29	0.103	0.25	"	"	"	"	"	
Silver	0.021	0.0067	0.25	"	"	"	"	"	J
Zinc	31.2	0.534	2.5	"	"	"	"	"	

## Total Metals by 7196A

Chromium, Hexavalent	ND	0.244	0.502	mg/Kg	1	L611215	03/30/2022	04/16/2022	
----------------------	----	-------	-------	-------	---	---------	------------	------------	--

Origins Laboratory, Inc.



The results in this report apply to the samples analyzed in accordance with the chain of custody document. This analytical report must be reproduced in its entirety.



Eagle Environmental Consulting, Inc.  
8000 W 44th Ave  
Wheat Ridge CO 80033

Martin C Eckert III  
Project Number: [none]  
Project: Noble - Roth #12-30

WH-FS-01@6'

3/30/2022 11:49:00AM

Analyte	Result	Min Detection Limit	Reporting Limit	Units	Dilution	Batch	Prepared	Analyzed	Notes
---------	--------	---------------------	-----------------	-------	----------	-------	----------	----------	-------

**Origins Laboratory, Inc.**  
**Y203800-05 (Soil)**

**Boron (DTPA Sorbitol)**

Boron	0.216	0.0983	mg/L	1	B2D0110	04/01/2022	04/04/2022	
-------	-------	--------	------	---	---------	------------	------------	--

**DRO/ORO by EPA 8015D**

Diesel (C10-C28)	35.5	25.0	mg/kg	1	B2C3107	03/31/2022	04/05/2022	
Residual Range Organics (C28-C40)	ND	100	"	"	"	"	"	U

Surrogate: o-Terphenyl	120 %	50-150	"	"	"	"	"	
------------------------	-------	--------	---	---	---	---	---	--

**GBTEX+TMBs by 8260D**

1,2,4-Trimethylbenzene	ND	0.00200	mg/kg	1	B2D0507	04/05/2022	04/08/2022	U
1,3,5-Trimethylbenzene	ND	0.00200	"	"	"	"	"	U
Benzene	ND	0.00200	"	"	"	"	"	U
Ethylbenzene	ND	0.00200	"	"	"	"	"	U
Toluene	ND	0.00200	"	"	"	"	"	U
Xylenes, total	ND	0.00200	"	"	"	"	"	U
Gasoline Range Hydrocarbons	ND	0.200	"	"	"	"	"	U

Surrogate: 1,2-Dichloroethane-d4	117 %	70-130	"	"	"	"	"	
Surrogate: Toluene-d8	93.4 %	70-130	"	"	"	"	"	

Origins Laboratory, Inc.



The results in this report apply to the samples analyzed in accordance with the chain of custody document. This analytical report must be reproduced in its entirety.

Eagle Environmental Consulting, Inc.  
8000 W 44th Ave  
Wheat Ridge CO 80033

Martin C Eckert III  
Project Number: [none]  
Project: Noble - Roth #12-30

WH-FS-01@6'

3/30/2022 11:49:00AM

Analyte	Result	Min Detection Limit	Reporting Limit	Units	Dilution	Batch	Prepared	Analyzed	Notes
---------	--------	---------------------	-----------------	-------	----------	-------	----------	----------	-------

Origins Laboratory, Inc.  
Y203800-05 (Soil)

## GBTEX+TMBs by 8260D

Surrogate: 4-Bromofluorobenzene	98.4 %	70-130	B2D05 07	04/05/2022	04/08/2022
---------------------------------	--------	--------	-------------	------------	------------

## Metals by Saturated Paste by EPA 6010

Calcium	4.34	0.499	meq/L	10	[CALC]	04/01/2022	04/05/2022
Magnesium	1.78	0.823	"	"	"	"	"
Sodium	1.90	0.435	"	"	"	"	"

## PAH by 8270D SIM

1-Methylnaphthalene	0.000685	0.000364	0.00067	mg/Kg	1	L610198	04/12/2022	04/15/2022	
2-Methylnaphthalene	ND	0.000645	0.00067	"	"	"	"	"	
Acenaphthene	ND	0.000304	0.00067	"	"	"	"	"	
Anthracene	ND	0.000334	0.00067	"	"	"	"	"	
Benzo(a)anthracene	ND	0.000493	0.00067	"	"	"	"	"	
Benzo(a)pyrene	0.000591	0.000468	0.00067	"	"	"	"	"	J
Benzo(b)fluoranthene	ND	0.000585	0.00067	"	"	"	"	"	
Benzo(k)fluoranthene	ND	0.000437	0.00067	"	"	"	"	"	
Chrysene	ND	0.000624	0.00067	"	"	"	"	"	
Dibenz(a,h)anthracene	ND	0.000614	0.00067	"	"	"	"	"	
Fluoranthene	ND	0.000394	0.00067	"	"	"	"	"	
Fluorene	0.000607	0.000286	0.00067	"	"	"	"	"	J

Origins Laboratory, Inc.



The results in this report apply to the samples analyzed in accordance with the chain of custody document. This analytical report must be reproduced in its entirety.

Eagle Environmental Consulting, Inc.  
8000 W 44th Ave  
Wheat Ridge CO 80033

Martin C Eckert III  
Project Number: [none]  
Project: Noble - Roth #12-30

WH-FS-01@6'

3/30/2022 11:49:00AM

Analyte	Result	Min Detection Limit	Reporting Limit	Units	Dilution	Batch	Prepared	Analyzed	Notes
---------	--------	---------------------	-----------------	-------	----------	-------	----------	----------	-------

Waypoint Analytical, Inc.  
Y203800-05 (Soil)

## PAH by 8270D SIM

Indeno(1,2,3-cd)pyrene	0.000778	0.000627	0.00067	mg/Kg	1	L610198	04/12/2022	04/15/2022	
Naphthalene	ND	0.000484	0.00067	"	"	"	"	"	
Pyrene	ND	0.000643	0.00067	"	"	"	"	"	

Surrogate: 2-Fluorobiphenyl	64.6 %		33-115			"	"	"	
Surrogate: 4-Terphenyl-d14	63.1 %		33-122			"	"	"	
Surrogate: Nitrobenzene-d5	47.7 %		29-110			"	"	"	

## pH in Soil by 9045D

pH	7.82			pH Units	1	B2D0407	04/04/2022	04/05/2022	
----	------	--	--	----------	---	---------	------------	------------	--

## SAR by 20B Saturated Paste

SAR	1.08			SAR	1	B2D0108	04/01/2022	04/05/2022	
-----	------	--	--	-----	---	---------	------------	------------	--

## Specific Conductance Mod. 9050A

Specific Conductance (EC)	0.867		0.00500	mmhos/cm	1	B2D0406	04/04/2022	04/05/2022	
---------------------------	-------	--	---------	----------	---	---------	------------	------------	--

## Total Metals by 7196A

Chromium, Hexavalent	ND	0.249	0.511	mg/Kg	1	L611216	03/30/2022	04/16/2022	
----------------------	----	-------	-------	-------	---	---------	------------	------------	--

Origins Laboratory, Inc.



The results in this report apply to the samples analyzed in accordance with the chain of custody document. This analytical report must be reproduced in its entirety.

Eagle Environmental Consulting, Inc.  
8000 W 44th Ave  
Wheat Ridge CO 80033

Martin C Eckert III  
Project Number: [none]  
Project: Noble - Roth #12-30

WH-FS-01@6'

3/30/2022 11:49:00AM

Analyte	Result	Min Detection Limit	Reporting Limit	Units	Dilution	Batch	Prepared	Analyzed	Notes
---------	--------	---------------------	-----------------	-------	----------	-------	----------	----------	-------

Waypoint Analytical, Inc.  
Y203800-05 (Soil)

## Total Metals by 6020B

Arsenic	1.3	0.0855	0.25	mg/Kg	5	L610159	04/11/2022	04/15/2022	
Barium	69.4	0.042	0.25	"	"	"	"	"	
Cadmium	0.107	0.0259	0.25	"	"	"	"	"	J
Copper	6.38	0.161	0.5	"	10	"	"	"	
Lead	11.4	0.031	0.25	"	5	"	"	"	
Nickel	4.49	0.127	0.5	"	10	"	"	"	
Selenium	0.34	0.103	0.25	"	5	"	"	"	
Silver	0.0222	0.0067	0.25	"	"	"	"	"	J
Zinc	27.5	1.07	5	"	10	"	"	"	

Origins Laboratory, Inc.



The results in this report apply to the samples analyzed in accordance with the chain of custody document. This analytical report must be reproduced in its entirety.

Eagle Environmental Consulting, Inc.  
8000 W 44th Ave  
Wheat Ridge CO 80033

Martin C Eckert III  
Project Number: [none]  
Project: Noble - Roth #12-30

## Extractable Petroleum Hydrocarbons by 8015D - Quality Control Origins Laboratory, Inc.

Analyte	Result	Reporting Limit	Units	Spike Level	Source Result	%REC	%REC Limits	RPD	RPD Limit	Notes
Batch B2C3107 - EPA 3550B										
Blank (B2C3107-BLK1)					Prepared: 03/31/2022 Analyzed: 04/05/2022					
Diesel (C10-C28)	ND	25.0	mg/kg							U
Residual Range Organics (C28-C40)	ND	100	"							U
Surrogate: o-Terphenyl	30		"	24.9		120	50-150			

Origins Laboratory, Inc.



The results in this report apply to the samples analyzed in accordance with the chain of custody document. This analytical report must be reproduced in its entirety.



Eagle Environmental Consulting, Inc.  
8000 W 44th Ave  
Wheat Ridge CO 80033

Martin C Eckert III  
Project Number: [none]  
Project: Noble - Roth #12-30

Extractable Petroleum Hydrocarbons by 8015D - Quality Control  
Origins Laboratory, Inc.

Analyte	Result	Reporting Limit	Units	Spike Level	Source Result	%REC	%REC Limits	RPD	RPD Limit	Notes
---------	--------	-----------------	-------	-------------	---------------	------	-------------	-----	-----------	-------

Batch B2C3107 - EPA 3550B

LCS (B2C3107-BS1)

Prepared: 03/31/2022 Analyzed: 04/05/2022

Diesel (C10-C28)	1130	50.0	mg/kg	1000		113	70-130			
Residual Range Organics (C28-C40)	1180	200	"	1000		118	70-130			
Surrogate: o-Terphenyl	70		"	49.8		140	50-150			

Origins Laboratory, Inc.



The results in this report apply to the samples analyzed in accordance with the chain of custody document. This analytical report must be reproduced in its entirety.

Eagle Environmental Consulting, Inc.  
8000 W 44th Ave  
Wheat Ridge CO 80033

Martin C Eckert III  
Project Number: [none]  
Project: Noble - Roth #12-30

**Extractable Petroleum Hydrocarbons by 8015D - Quality Control**  
**Origins Laboratory, Inc.**

Analyte	Result	Reporting Limit	Units	Spike Level	Source Result	%REC	%REC Limits	RPD	RPD Limit	Notes
---------	--------	-----------------	-------	-------------	---------------	------	-------------	-----	-----------	-------

**Batch B2C3107 - EPA 3550B**

Matrix Spike (B2C3107-MS1)		Source: Y203800-01			Prepared: 03/31/2022 Analyzed: 04/06/2022					
Diesel (C10-C28)	901	50.0	mg/kg	1000	ND	90.1	70-130			
Residual Range Organics (C28-C40)	1160	200	"	1000	ND	116	70-130			
Surrogate: o-Terphenyl	50		"	49.8		100	50-150			

Origins Laboratory, Inc.



*The results in this report apply to the samples analyzed in accordance with the chain of custody document. This analytical report must be reproduced in its entirety.*

Eagle Environmental Consulting, Inc.  
8000 W 44th Ave  
Wheat Ridge CO 80033

Martin C Eckert III  
Project Number: [none]  
Project: Noble - Roth #12-30

**Extractable Petroleum Hydrocarbons by 8015D - Quality Control**  
**Origins Laboratory, Inc.**

Analyte	Result	Reporting Limit	Units	Spike Level	Source Result	%REC	%REC Limits	RPD	RPD Limit	Notes
---------	--------	-----------------	-------	-------------	---------------	------	-------------	-----	-----------	-------

**Batch B2C3107 - EPA 3550B**

Matrix Spike Dup (B2C3107-MSD1)		Source: Y203800-01			Prepared: 03/31/2022 Analyzed: 04/05/2022					
Diesel (C10-C28)	1120	50.0	mg/kg	1000	ND	112	70-130	21.9	35	
Residual Range Organics (C28-C40)	1230	200	"	1000	ND	123	70-130	6.19	35	
Surrogate: o-Terphenyl	62		"	49.8		125	50-150			

Origins Laboratory, Inc.



*The results in this report apply to the samples analyzed in accordance with the chain of custody document. This analytical report must be reproduced in its entirety.*

Eagle Environmental Consulting, Inc.  
8000 W 44th Ave  
Wheat Ridge CO 80033

Martin C Eckert III  
Project Number: [none]  
Project: Noble - Roth #12-30

## Extractable Petroleum Hydrocarbons by 8015D - Quality Control

### Origins Laboratory, Inc.

Analyte	Result	Reporting Limit	Units	Spike Level	Source Result	%REC	%REC Limits	RPD	RPD Limit	Notes
Batch B2D0507 - EPA 5030 (soil)										
Blank (B2D0507-BLK1)					Prepared: 04/05/2022 Analyzed: 04/07/2022					
1,2,4-Trimethylbenzene	ND	0.00200	mg/kg							U
1,3,5-Trimethylbenzene	ND	0.00200	"							U
Benzene	ND	0.00200	"							U
Ethylbenzene	ND	0.00200	"							U
Naphthalene	ND	0.0100	"							U
Toluene	ND	0.00200	"							U
Xylenes, total	ND	0.00200	"							U
Gasoline Range Hydrocarbons	ND	0.200	"							U
Surrogate: 1,2-Dichloroethane-d4	0.13		"	0.125		104	70-130			
Surrogate: Toluene-d8	0.12		"	0.125		96.9	70-130			
Surrogate: 4-Bromofluorobenzene	0.12		"	0.125		99.0	70-130			

Origins Laboratory, Inc.



The results in this report apply to the samples analyzed in accordance with the chain of custody document. This analytical report must be reproduced in its entirety.

Eagle Environmental Consulting, Inc.  
8000 W 44th Ave  
Wheat Ridge CO 80033

Martin C Eckert III  
Project Number: [none]  
Project: Noble - Roth #12-30

**Volatile Organic Compounds by GC/MS SW846 8260D - Quality Control**  
**Origins Laboratory, Inc.**

Analyte	Result	Reporting Limit	Units	Spike Level	Source Result	%REC	%REC Limits	RPD	RPD Limit	Notes
<b>Batch B2D0507 - EPA 5030 (soil)</b>										
<b>LCS (B2D0507-BS1)</b>					Prepared: 04/05/2022 Analyzed: 04/07/2022					
1,2,4-Trimethylbenzene	0.103	0.00200	mg/kg	0.100		103	70-130			
1,3,5-Trimethylbenzene	0.102	0.00200	"	0.100		102	70-130			
Benzene	0.101	0.00200	"	0.100		101	70-130			
Ethylbenzene	0.0995	0.00200	"	0.100		99.5	70-130			
Naphthalene	0.106	0.0100	"	0.100		106	70-130			
Toluene	0.101	0.00200	"	0.100		101	70-130			
o-Xylene	0.100	0.00200	"	0.100		100	70-130			
m,p-Xylene	0.201	0.00400	"	0.200		101	70-130			
Surrogate: 1,2-Dichloroethane-d4	0.13		"	0.125		102	70-130			
Surrogate: Toluene-d8	0.12		"	0.125		98.4	70-130			
Surrogate: 4-Bromofluorobenzene	0.12		"	0.125		98.7	70-130			

Origins Laboratory, Inc.



The results in this report apply to the samples analyzed in accordance with the chain of custody document. This analytical report must be reproduced in its entirety.



Eagle Environmental Consulting, Inc.  
8000 W 44th Ave  
Wheat Ridge CO 80033

Martin C Eckert III  
Project Number: [none]  
Project: Noble - Roth #12-30

**Volatile Organic Compounds by GC/MS SW846 8260D - Quality Control**  
**Origins Laboratory, Inc.**

Analyte	Result	Reporting Limit	Units	Spike Level	Source Result	%REC	%REC Limits	RPD	RPD Limit	Notes
<b>Batch B2D0507 - EPA 5030 (soil)</b>										
<b>Matrix Spike (B2D0507-MS1)</b>		<b>Source: Y203798-01</b>			Prepared: 04/05/2022 Analyzed: 04/07/2022					
1,2,4-Trimethylbenzene	0.103	0.00200	mg/kg	0.100	0.00144	102	70-130			
1,3,5-Trimethylbenzene	0.104	0.00200	"	0.100	ND	104	70-130			
Benzene	0.100	0.00200	"	0.100	ND	100	70-130			
Ethylbenzene	0.113	0.00200	"	0.100	ND	113	70-130			
Naphthalene	0.0852	0.0100	"	0.100	0.00320	82.0	70-130			
Toluene	0.103	0.00200	"	0.100	ND	103	70-130			
o-Xylene	0.112	0.00200	"	0.100	ND	112	70-130			
m,p-Xylene	0.230	0.00400	"	0.200	ND	115	70-130			
Surrogate: 1,2-Dichloroethane-d4	0.12		"	0.125		96.0	70-130			
Surrogate: Toluene-d8	0.13		"	0.125		101	70-130			
Surrogate: 4-Bromofluorobenzene	0.14		"	0.125		111	70-130			

Origins Laboratory, Inc.



The results in this report apply to the samples analyzed in accordance with the chain of custody document. This analytical report must be reproduced in its entirety.

Eagle Environmental Consulting, Inc.  
8000 W 44th Ave  
Wheat Ridge CO 80033

Martin C Eckert III  
Project Number: [none]  
Project: Noble - Roth #12-30

**Volatile Organic Compounds by GC/MS SW846 8260D - Quality Control**  
**Origins Laboratory, Inc.**

Analyte	Result	Reporting Limit	Units	Spike Level	Source Result	%REC	%REC Limits	RPD	RPD Limit	Notes
<b>Batch B2D0507 - EPA 5030 (soil)</b>										
<b>Matrix Spike Dup (B2D0507-MSD1)</b>		<b>Source: Y203798-01</b>			Prepared: 04/05/2022 Analyzed: 04/07/2022					
1,2,4-Trimethylbenzene	0.0865	0.00200	mg/kg	0.100	0.00144	85.1	70-130	17.5	20	
1,3,5-Trimethylbenzene	0.0850	0.00200	"	0.100	ND	85.0	70-130	20.2	20	QM-07
Benzene	0.0994	0.00200	"	0.100	ND	99.4	70-130	1.06	20	
Ethylbenzene	0.0975	0.00200	"	0.100	ND	97.5	70-130	14.9	20	
Naphthalene	0.0862	0.0100	"	0.100	0.00320	83.0	70-130	1.14	20	
Toluene	0.0975	0.00200	"	0.100	ND	97.5	70-130	5.02	20	
o-Xylene	0.0994	0.00200	"	0.100	ND	99.4	70-130	11.7	20	
m,p-Xylene	0.196	0.00400	"	0.200	ND	97.9	70-130	15.9	20	
Surrogate: 1,2-Dichloroethane-d4	0.13		"	0.125		101	70-130			
Surrogate: Toluene-d8	0.12		"	0.125		99.2	70-130			
Surrogate: 4-Bromofluorobenzene	0.13		"	0.125		108	70-130			

Origins Laboratory, Inc.



The results in this report apply to the samples analyzed in accordance with the chain of custody document. This analytical report must be reproduced in its entirety.

Eagle Environmental Consulting, Inc.  
8000 W 44th Ave  
Wheat Ridge CO 80033

Martin C Eckert III  
Project Number: [none]  
Project: Noble - Roth #12-30

## Volatile Organic Compounds by GC/MS SW846 8260D - Quality Control

### Origins Laboratory, Inc.

Analyte	Result	Reporting Limit	Units	Spike Level	Source Result	%REC	%REC Limits	RPD	RPD Limit	Notes
---------	--------	-----------------	-------	-------------	---------------	------	-------------	-----	-----------	-------

## Saturated Paste - Quality Control

### Origins Laboratory, Inc.

Analyte	Result	Reporting Limit	Units	Spike Level	Source Result	%REC	%REC Limits	RPD	RPD Limit	Notes
---------	--------	-----------------	-------	-------------	---------------	------	-------------	-----	-----------	-------

#### Batch B2D0406 - NO PREP

##### Blank (B2D0406-BLK1)

Prepared: 04/04/2022 Analyzed: 04/05/2022

Specific Conductance (EC) 0.000800 0.00500 mmhos/cm

##### Duplicate (B2D0406-DUP1)

Source: Y203798-03

Prepared: 04/04/2022 Analyzed: 04/05/2022

Specific Conductance (EC) 1.05 0.00500 mmhos/cm 1.14 8.17 25

#### Batch B2D0407 - NO PREP

##### Duplicate (B2D0407-DUP1)

Source: Y203798-03

Prepared: 04/04/2022 Analyzed: 04/05/2022

pH 7.39 pH Units 7.39 0.00 25

Origins Laboratory, Inc.



The results in this report apply to the samples analyzed in accordance with the chain of custody document. This analytical report must be reproduced in its entirety.

Eagle Environmental Consulting, Inc.  
8000 W 44th Ave  
Wheat Ridge CO 80033

Martin C Eckert III  
Project Number: [none]  
Project: Noble - Roth #12-30

**PAH by 8270D SIM - Quality Control**  
**Waypoint Analytical, Inc.**

Analyte	Result	Reporting Limit	Units	Spike Level	Source Result	%REC	%REC Limits	RPD	RPD Limit	Notes
---------	--------	-----------------	-------	-------------	---------------	------	-------------	-----	-----------	-------

**Batch L610198 - 3550B**

MSD (L 85124-MSD-L610198)		Source: 85124			Prepared: 04/12/2022 Analyzed: 04/15/2022					
Indeno(1,2,3-cd)pyrene	0.11	0.00314	mg/Kg	0.164	0.00322	65.1	30-130	14.6	30	
1-Methylnaphthalene	0.0954	0.00182	"	0.164	85124	58.1	30-130	8.6	30	
Pyrene	0.105	0.00322	"	0.164	85124	64	30-130	9.9	30	
Naphthalene	0.0869	0.00242	"	0.164	85124	52.9	30-130	5.9	30	
Fluorene	0.0938	0.00143	"	0.164	85124	57.1	30-130	8.3	30	
Fluoranthene	0.105	0.00197	"	0.164	85124	64	30-130	10.8	30	
Dibenz(a,h)anthracene	0.132	0.00307	"	0.164	85124	80.4	30-130	12	30	
2-Methylnaphthalene	0.0873	0.00323	"	0.164	85124	53.2	30-130	8.7	30	
Chrysene	0.0964	0.00312	"	0.164	85124	58.7	30-130	5.6	30	
Acenaphthene	0.0853	0.00152	"	0.164	85124	52	30-130	10.7	30	
Anthracene	0.0939	0.00167	"	0.164	85124	57.2	30-130	13.9	30	
Benzo(a)anthracene	0.0938	0.00247	"	0.164	85124	57.1	30-130	14	30	
Benzo(a)pyrene	0.0998	0.00234	"	0.164	0.00267	59.2	30-130	6.9	30	
Benzo(b)fluoranthene	0.0847	0.00293	"	0.164	85124	51.6	30-130	2.2	30	
Benzo(k)fluoranthene	0.0855	0.00219	"	0.164	85124	52.1	30-130	0.9	30	
Surrogate: 4-Terphenyl-d14	70.5		"	0.329	261	70.5	33-122			
Surrogate: 2-Fluorobiphenyl	60.7		"	0.329	230	60.7	33-115			
Surrogate: Nitrobenzene-d5	45.2		"	0.329	163	45.2	29-110			

MS (L 85124-MS-L610198)		Source: 85124			Prepared: 04/12/2022 Analyzed: 04/15/2022					
Chrysene	0.102	0.00312	mg/Kg	0.166	85124	61.4	30-130			
Benzo(k)fluoranthene	0.0863	0.00219	"	0.166	85124	51.9	30-130			
Naphthalene	0.0922	0.00242	"	0.166	85124	55.5	30-130			
Indeno(1,2,3-cd)pyrene	0.095	0.00314	"	0.166	0.00322	55.2	30-130			
Fluorene	0.102	0.00143	"	0.166	85124	61.4	30-130			
Fluoranthene	0.117	0.00197	"	0.166	85124	70.4	30-130			
Dibenz(a,h)anthracene	0.117	0.00307	"	0.166	85124	70.4	30-130			

Origins Laboratory, Inc.



The results in this report apply to the samples analyzed in accordance with the chain of custody document. This analytical report must be reproduced in its entirety.

Eagle Environmental Consulting, Inc.  
8000 W 44th Ave  
Wheat Ridge CO 80033

Martin C Eckert III  
Project Number: [none]  
Project: Noble - Roth #12-30

**PAH by 8270D SIM - Quality Control**  
**Waypoint Analytical, Inc.**

Analyte	Result	Reporting Limit	Units	Spike Level	Source Result	%REC	%REC Limits	RPD	RPD Limit	Notes
---------	--------	-----------------	-------	-------------	---------------	------	-------------	-----	-----------	-------

**Batch L610198 - 3550B**

MS (L 85124-MS-L610198)		Source: 85124			Prepared: 04/12/2022 Analyzed: 04/15/2022					
Pyrene	0.116	0.00322	mg/Kg	0.166	85124	69.8	30-130			
1-Methylnaphthalene	0.104	0.00182	"	0.166	85124	62.6	30-130			
2-Methylnaphthalene	0.0953	0.00323	"	0.166	85124	57.4	30-130			
Acenaphthene	0.095	0.00152	"	0.166	85124	57.2	30-130			
Anthracene	0.108	0.00167	"	0.166	85124	65	30-130			
Benzo(a)anthracene	0.108	0.00247	"	0.166	85124	65	30-130			
Benzo(a)pyrene	0.107	0.00234	"	0.166	0.00267	62.8	30-130			
Benzo(b)fluoranthene	0.0828	0.00293	"	0.166	85124	49.8	30-130			
Surrogate: Nitrobenzene-d5	50.6		"	0.332	163	50.6	29-110			
Surrogate: 2-Fluorobiphenyl	66.2		"	0.332	230	66.2	33-115			
Surrogate: 4-Terphenyl-d14	78.6		"	0.332	261	78.6	33-122			

LCS (LCS-L610198)		Prepared: 04/12/2022 Analyzed: 04/15/2022								
Indeno(1,2,3-cd)pyrene	0.13	0.000627	mg/Kg	0.167		77.8	30-130			
Pyrene	0.112	0.000643	"	0.167		67	30-130			
1-Methylnaphthalene	0.0975	0.000364	"	0.167		58.3	30-130			
Naphthalene	0.0925	0.000484	"	0.167		55.3	30-130			
Fluorene	0.1	0.000286	"	0.167		59.8	30-130			
Anthracene	0.107	0.000334	"	0.167		64	30-130			
2-Methylnaphthalene	0.0954	0.000645	"	0.167		57.1	30-130			
Acenaphthene	0.0905	0.000304	"	0.167		54.1	30-130			
Fluoranthene	0.112	0.000394	"	0.167		67	30-130			
Benzo(a)anthracene	0.105	0.000493	"	0.167		62.8	30-130			
Benzo(a)pyrene	0.107	0.000468	"	0.167		64	30-130			
Benzo(b)fluoranthene	0.0991	0.000585	"	0.167		59.3	30-130			
Benzo(k)fluoranthene	0.0937	0.000437	"	0.167		56.1	30-130			
Chrysene	0.0974	0.000624	"	0.167		58.3	30-130			

Origins Laboratory, Inc.



The results in this report apply to the samples analyzed in accordance with the chain of custody document. This analytical report must be reproduced in its entirety.

Eagle Environmental Consulting, Inc.  
8000 W 44th Ave  
Wheat Ridge CO 80033

Martin C Eckert III  
Project Number: [none]  
Project: Noble - Roth #12-30

**PAH by 8270D SIM - Quality Control**  
**Waypoint Analytical, Inc.**

Analyte	Result	Reporting Limit	Units	Spike Level	Source Result	%REC	%REC Limits	RPD	RPD Limit	Notes
<b>Batch L610198 - 3550B</b>										
<b>LCS (LCS-L610198)</b>					Prepared: 04/12/2022 Analyzed: 04/15/2022					
Dibenz(a,h)anthracene	0.135	0.000614	mg/Kg	0.167		80.8	30-130			
Surrogate: 2-Fluorobiphenyl	68.1		"	0.333		68.1	33-115			
Surrogate: Nitrobenzene-d5	50.7		"	0.333		50.7	29-110			
Surrogate: 4-Terphenyl-d14	80.4		"	0.333		80.4	33-122			
<b>LRB (LRB-L610198)</b>					Prepared: 04/12/2022 Analyzed: 04/15/2022					
Fluorene	ND	0.00067	mg/Kg				-			
Benzo(a)anthracene	ND	0.00067	"				-			
Anthracene	ND	0.00067	"				-			
Acenaphthene	ND	0.00067	"				-			
Benzo(a)pyrene	ND	0.00067	"				-			
Dibenz(a,h)anthracene	ND	0.00067	"				-			
Benzo(b)fluoranthene	ND	0.00067	"				-			
Benzo(k)fluoranthene	ND	0.00067	"				-			
Chrysene	ND	0.00067	"				-			
Fluoranthene	ND	0.00067	"				-			
1-Methylnaphthalene	ND	0.00067	"				-			
Indeno(1,2,3-cd)pyrene	ND	0.00067	"				-			
Naphthalene	ND	0.00067	"				-			
Pyrene	ND	0.00067	"				-			
2-Methylnaphthalene	ND	0.00067	"				-			
Surrogate: 4-Terphenyl-d14	70.2		"	0.333		70.2	33-122			
Surrogate: Nitrobenzene-d5	45.9		"	0.333		45.9	29-110			
Surrogate: 2-Fluorobiphenyl	64.8		"	0.333		64.8	33-115			

Origins Laboratory, Inc.



The results in this report apply to the samples analyzed in accordance with the chain of custody document. This analytical report must be reproduced in its entirety.



Eagle Environmental Consulting, Inc.  
8000 W 44th Ave  
Wheat Ridge CO 80033

Martin C Eckert III  
Project Number: [none]  
Project: Noble - Roth #12-30

## Total Metals by 7196A - Quality Control Waypoint Analytical, Inc.

Analyte	Result	Reporting Limit	Units	Spike Level	Source Result	%REC	%REC Limits	RPD	RPD Limit	Notes
<b>Batch L611216 -</b>										
<b>DUP (L 85717-DUP)</b>	<b>Source: Y203800-05</b>				Prepared: Analyzed: 04/16/2022					
Chromium, Hexavalent	ND	0.244	mg/Kg		85717	-		0	20	
<b>MS (L 85717-MS)</b>	<b>Source: Y203800-05</b>				Prepared: Analyzed: 04/16/2022					
Chromium, Hexavalent	5.3	0.25	mg/Kg	8.23	85717	64	75-125			*
<b>LCS (LCS)</b>	Prepared: Analyzed: 04/16/2022									
Chromium, Hexavalent	7.16	0.244	mg/Kg	8		90	75-125			

Origins Laboratory, Inc.



*The results in this report apply to the samples analyzed in accordance with the chain of custody document. This analytical report must be reproduced in its entirety.*

Eagle Environmental Consulting, Inc.  
8000 W 44th Ave  
Wheat Ridge CO 80033

Martin C Eckert III  
Project Number: [none]  
Project: Noble - Roth #12-30

## Total Metals by 6020B - Quality Control Waypoint Analytical, Inc.

Analyte	Result	Reporting Limit	Units	Spike Level	Source Result	%REC	%REC Limits	RPD	RPD Limit	Notes
<b>Batch L610159 - 3050B</b>										
<b>MSD (L 85734-MSD-L610159)</b>			<b>Source: 85734</b>		Prepared: 04/11/2022 Analyzed: 04/15/2022					
Copper	9.84	0.0806	mg/Kg	2.42	6.95	119	75-125	3.5	80	
Zinc	59.9	0.534	"	24.2	33.8	108	75-125	2.7	80	
Silver	0.515	0.0067	"	0.484	0.0366	99	75-125	4.9	80	
Selenium	3.8	0.103	"	4.84	0.33	72	75-125	3.4	80	*
Lead	10.2	0.031	"	2.42	7.52	111	75-125	2.3	80	
Cadmium	0.632	0.0259	"	0.484	0.119	106	75-125	2.5	80	
Barium	85.9	0.042	"	4.84	78.3	157	75-125	3	80	*
Arsenic	3.47	0.0855	"	2.42	1.59	78	75-125	3.6	80	
Nickel	10.1	0.0633	"	2.42	7.7	99	75-125	7.6	80	
<b>MS (L 85734-MS-L610159)</b>			<b>Source: 85734</b>		Prepared: 04/11/2022 Analyzed: 04/15/2022					
Arsenic	3.6	0.0855	mg/Kg	2.45	1.59	82	75-125			
Zinc	61.6	0.534	"	24.5	33.8	113	75-125			
Silver	0.541	0.0067	"	0.491	0.0366	103	75-125			
Selenium	3.67	0.103	"	4.91	0.33	68	75-125			*
Nickel	10.9	0.0633	"	2.45	7.7	130	75-125			*
Lead	9.96	0.031	"	2.45	7.52	99	75-125			
Copper	10.2	0.0806	"	2.45	6.95	132	75-125			*
Cadmium	0.648	0.0259	"	0.491	0.119	108	75-125			
Barium	88.6	0.042	"	4.91	78.3	210	75-125			*
<b>LCS (LCS-L610159)</b>			Prepared: 04/11/2022 Analyzed: 04/15/2022							
Zinc	25.5	0.534	mg/Kg	25		102	80-120			
Lead	2.45	0.031	"	2.5		98	80-120			
Copper	2.64	0.0806	"	2.5		106	80-120			
Arsenic	2.61	0.0855	"	2.5		104	80-120			
Cadmium	0.517	0.0259	"	0.5		103	80-120			

Origins Laboratory, Inc.



The results in this report apply to the samples analyzed in accordance with the chain of custody document. This analytical report must be reproduced in its entirety.

Eagle Environmental Consulting, Inc.  
8000 W 44th Ave  
Wheat Ridge CO 80033

Martin C Eckert III  
Project Number: [none]  
Project: Noble - Roth #12-30

## Total Metals by 6020B - Quality Control Waypoint Analytical, Inc.

Analyte	Result	Reporting Limit	Units	Spike Level	Source Result	%REC	%REC Limits	RPD	RPD Limit	Notes
<b>Batch L610159 - 3050B</b>										
<b>LCS (LCS-L610159)</b>					Prepared: 04/11/2022 Analyzed: 04/15/2022					
Selenium	4.55	0.103	mg/Kg	5		91	80-120			
Barium	4.55	0.042	"	5		91	80-120			
Silver	0.489	0.0067	"	0.5		98	80-120			
Nickel	2.63	0.0633	"	2.5		105	80-120			
<b>LRB (LRB-L610159)</b>					Prepared: 04/11/2022 Analyzed: 04/15/2022					
Silver	ND	0.25	mg/Kg				-			
Selenium	ND	0.25	"				-			
Nickel	ND	0.25	"				-			
Lead	ND	0.25	"				-			
Copper	ND	0.25	"				-			
Cadmium	ND	0.25	"				-			
Barium	ND	0.25	"				-			
Arsenic	ND	0.25	"				-			
Zinc	ND	2.5	"				-			

Origins Laboratory, Inc.



*The results in this report apply to the samples analyzed in accordance with the chain of custody document. This analytical report must be reproduced in its entirety.*

Eagle Environmental Consulting, Inc.  
8000 W 44th Ave  
Wheat Ridge CO 80033

Martin C Eckert III  
Project Number: [none]  
Project: Noble - Roth #12-30

## Total Metals by 7196A - Quality Control Waypoint Analytical, Inc.

Analyte	Result	Reporting Limit	Units	Spike Level	Source Result	%REC	%REC Limits	RPD	RPD Limit	Notes
<b>Batch L611215 -</b>										
<b>DUP (L 85690-DUP)</b>		<b>Source: 85690</b>			Prepared: Analyzed: 04/16/2022					
Chromium, Hexavalent	ND	1.22	mg/Kg		85690	-	0	20		
<b>MS (L 85690-MS)</b>		<b>Source: 85690</b>			Prepared: Analyzed: 04/16/2022					
Chromium, Hexavalent	ND	1.22	mg/Kg	7.78	85690	0	75-125			*
<b>LRB (LRB)</b>					Prepared: Analyzed: 04/16/2022					
Chromium, Hexavalent	ND	0.5	mg/Kg				-			

Origins Laboratory, Inc.



*The results in this report apply to the samples analyzed in accordance with the chain of custody document. This analytical report must be reproduced in its entirety.*

Eagle Environmental Consulting, Inc.  
8000 W 44th Ave  
Wheat Ridge CO 80033

Martin C Eckert III  
Project Number: [none]  
Project: Noble - Roth #12-30

### Notes and Definitions

U Sample is Non-Detect.

QM-07 The spike recovery was outside acceptance limits for the MS and/or MSD. The batch was accepted based on acceptable LCS recovery.

J Estimated Value. Analyte below reported quantitation limit.

\* QC Failure

ND Analyte NOT DETECTED at or above the reporting limit

RPD Relative Percent Difference

All soil results are reported on a wet weight basis.

Origins Laboratory, Inc.



*The results in this report apply to the samples analyzed in accordance with the chain of custody document. This analytical report must be reproduced in its entirety.*



April 28, 2022

Eagle Environmental Consulting, Inc.

Martin C Eckert III

8000 W 44th Ave

Wheat Ridge CO 80033

Project Name - Noble - Roth #12-30

Project Number - [none]

Attached are your analytical results for Noble - Roth #12-30 received by Origins Laboratory, Inc. April 22, 2022. This project is associated with Origins project number Y204546-01.

The analytical results in the following report were analyzed under the guidelines of EPA Methods. These methods are identified as follows; "SW" are defined in SW-846, "EPA" are defined in 40CFR part 136 and "SM" are defined in the most current revision of Standard Methods For the Examination of Water and Wastewater.

The analytical results apply specifically to the samples and analyses specified per the attached Chain of Custody. As such, this report shall not be reproduced except in full, without the written approval of Origin's laboratory.

Unless otherwise noted, the analytical results for all soil samples are reported on a wet weight basis. All analytical analyses were performed under NELAP guidelines unless noted by a data qualifier.

Any holding time exceedances, deviations from the method specifications or deviations from Origins Laboratory's Standard Operating Procedures are outlined in the case narrative.

Thank you for selecting Origins for your analytical needs. Please contact us with any questions concerning this report, or if we can help with anything at all.

Origins Laboratory, Inc.  
303.433.1322  
o-squad@oelabinc.com



1725 Elk Place, Denver, CO 80211 | Phone: 303.433.1322 | Fax: 303.265.9645



Eagle Environmental Consulting, Inc.

8000 W 44th Ave

Wheat Ridge CO 80033

Martin C Eckert III

Project Number: [none]

Project: Noble - Roth #12-30

### CROSS REFERENCE REPORT

Sample ID	Laboratory ID	Matrix	Date Sampled	Date Received
Background-01@3'	Y204546-01	Soil	March 30, 2022 11:33	04/22/2022 14:15

Origins Laboratory, Inc.



*The results in this report apply to the samples analyzed in accordance with the chain of custody document. This analytical report must be reproduced in its entirety.*



Eagle Environmental Consulting, Inc.  
8000 W 44th Ave  
Wheat Ridge CO 80033

Martin C Eckert III  
Project Number: [none]  
Project: Noble - Roth #12-30

Origins Laboratory

## Sample Receipt Checklist

F-012207-01-R1  
Effective Date: 01/09/12

Origins Work Order: Y204546

Client: Eagle

Client Project ID: Roth 12-30

Checklist Completed by: SG

Shipped Via: HD

(UPS, FedEx, Hand Delivered, Pick-up, etc.)

Date/time completed: 4/25/22

Airbill #: N/A

Matrix(s) Received: (Check all that apply): ☒ Soil/Solid

☐ Water

☐ Other:

Cooler Number/Temperature: 1, 0.8 °C / °C / °C / °C (Describe)

Thermometer ID: T004

Requirement Description	Yes	No	N/A	Comments (if any)
If samples require cooling, was the temperature between 0°C to ≤ 6°C <sup>(1)</sup> ?	<input checked="" type="checkbox"/>			
Is there ice present (document if blue ice is used)	<input checked="" type="checkbox"/>			
Are custody seals present on cooler? (if so, document in comments if they are signed and dated, broken or intact)		<input checked="" type="checkbox"/>		
Are custody seals present on each sample container? (if so, document in comments if they are signed and dated, broken or intact)		<input checked="" type="checkbox"/>		
Were all samples received intact <sup>(1)</sup> ?	<input checked="" type="checkbox"/>			
Was adequate sample volume provided <sup>(1)</sup> ?	<input checked="" type="checkbox"/>			
Are short holding time analytes or samples with HTs due within 48 hours present <sup>(1)</sup> ?		<input checked="" type="checkbox"/>		
Is a chain-of-custody (COC) present and filled out completely <sup>(1)</sup> ?	<input checked="" type="checkbox"/>			
Does the COC agree with the number and type of sample bottles received <sup>(1)</sup> ?	<input checked="" type="checkbox"/>			
Do the sample IDs on the bottle labels match the COC <sup>(1)</sup> ?	<input checked="" type="checkbox"/>			
Is the COC properly relinquished by the client with date and time recorded <sup>(1)</sup> ?	<input checked="" type="checkbox"/>			
For volatiles in water — is there headspace (> ¼ inch bubble) present? If yes, contact client and note in narrative.			<input checked="" type="checkbox"/>	
Are samples preserved that require preservation and was it checked <sup>(1)</sup> ? (note ID of confirmation instrument used in comments) / (preservation is not confirmed for subcontracted analyses in order to insure sample integrity)/(pH < 2 for samples preserved with HNO <sub>3</sub> , HCL, H <sub>2</sub> SO <sub>4</sub> ) / (pH > 10 for samples preserved with NaAsO <sub>2</sub> +NaOH, ZnAc+NaOH)			<input checked="" type="checkbox"/>	
Additional Comments (if any):				

<sup>(1)</sup>If NO, then contact the client before proceeding with analysis and note date/time and person contacted as well as the corrective action to in the additional comments (above) and the case narrative.

Reviewed by: JB (Project Manager)

Date/Time Reviewed: 4-26-22

Origins Laboratory, Inc.

*J. Bynon*

The results in this report apply to the samples analyzed in accordance with the chain of custody document. This analytical report must be reproduced in its entirety.

Eagle Environmental Consulting, Inc.  
8000 W 44th Ave  
Wheat Ridge CO 80033

Martin C Eckert III  
Project Number: [none]  
Project: Noble - Roth #12-30

**Background-01@3'**

**3/30/2022 11:33:00AM**

Analyte	Result	Min Detection Limit	Reporting Limit	Units	Dilution	Batch	Prepared	Analyzed	Notes
---------	--------	------------------------	--------------------	-------	----------	-------	----------	----------	-------

**Waypoint Analytical, LLC.**  
**Y204546-01 (Soil)**

**Total Metals by 6020B**

Arsenic	1.21	0.0855	0.25	mg/Kg	5	L612926	04/26/2022	04/27/2022	
Barium	31.6	0.042	0.25	"	"	"	"	"	
Lead	2.64	0.031	0.25	"	"	"	"	"	
Selenium	0.11	0.103	0.25	"	"	"	"	"	J

Origins Laboratory, Inc.



*The results in this report apply to the samples analyzed in accordance with the chain of custody document. This analytical report must be reproduced in its entirety.*

Eagle Environmental Consulting, Inc.  
8000 W 44th Ave  
Wheat Ridge CO 80033

Martin C Eckert III  
Project Number: [none]  
Project: Noble - Roth #12-30

## Total Metals by 6020B - Quality Control Waypoint Analytical, LLC.

Analyte	Result	Reporting Limit	Units	Spike Level	Source Result	%REC	%REC Limits	RPD	RPD Limit	Notes
<b>Batch L612926 - 3050B</b>										
<b>MSD (L 88590-MSD-L612926)</b>			<b>Source: 88590</b>		Prepared: 04/26/2022 Analyzed: 04/27/2022					
Barium	24.6	0.042	mg/Kg	4.79	18.7	123	75-125	43.8	80	
Lead	8.7	0.031	"	2.4	5.75	123	75-125	29.4	80	
Selenium	3.69	0.103	"	4.79	0.195	73	75-125	6.7	80	*
Arsenic	2.46	0.0855	"	2.4	0.696	74	75-125	5.9	80	*
<b>MS (L 88590-MS-L612926)</b>			<b>Source: 88590</b>		Prepared: 04/26/2022 Analyzed: 04/27/2022					
Selenium	3.45	0.103	mg/Kg	4.68	0.195	70	75-125			*
Arsenic	2.61	0.0855	"	2.34	0.696	82	75-125			
Barium	38.4	0.042	"	4.68	18.7	421	75-125			*
Lead	11.7	0.031	"	2.34	5.75	254	75-125			*
<b>LCS (LCS-L612926)</b>			Prepared: 04/26/2022 Analyzed: 04/27/2022							
Barium	4.73	0.042	mg/Kg	5		95	80-120			
Lead	2.32	0.031	"	2.5		93	80-120			
Selenium	4.37	0.103	"	5		87	80-120			
Arsenic	2.24	0.0855	"	2.5		90	80-120			
<b>LRB (LRB-L612926)</b>			Prepared: 04/26/2022 Analyzed: 04/27/2022							
Selenium	ND	0.25	mg/Kg				-			
Arsenic	ND	0.25	"				-			
Barium	0.0725	0.25	"				-			J
Lead	ND	0.25	"				-			

Origins Laboratory, Inc.



The results in this report apply to the samples analyzed in accordance with the chain of custody document. This analytical report must be reproduced in its entirety.

Eagle Environmental Consulting, Inc.  
8000 W 44th Ave  
Wheat Ridge CO 80033

Martin C Eckert III  
Project Number: [none]  
Project: Noble - Roth #12-30

### Notes and Definitions

J Estimated Value. Analyte below reported quantitation limit.

\* QC Failure

ND Analyte NOT DETECTED at or above the reporting limit

RPD Relative Percent Difference

All soil results are reported on a wet weight basis.

Origins Laboratory, Inc.



*The results in this report apply to the samples analyzed in accordance with the chain of custody document. This analytical report must be reproduced in its entirety.*