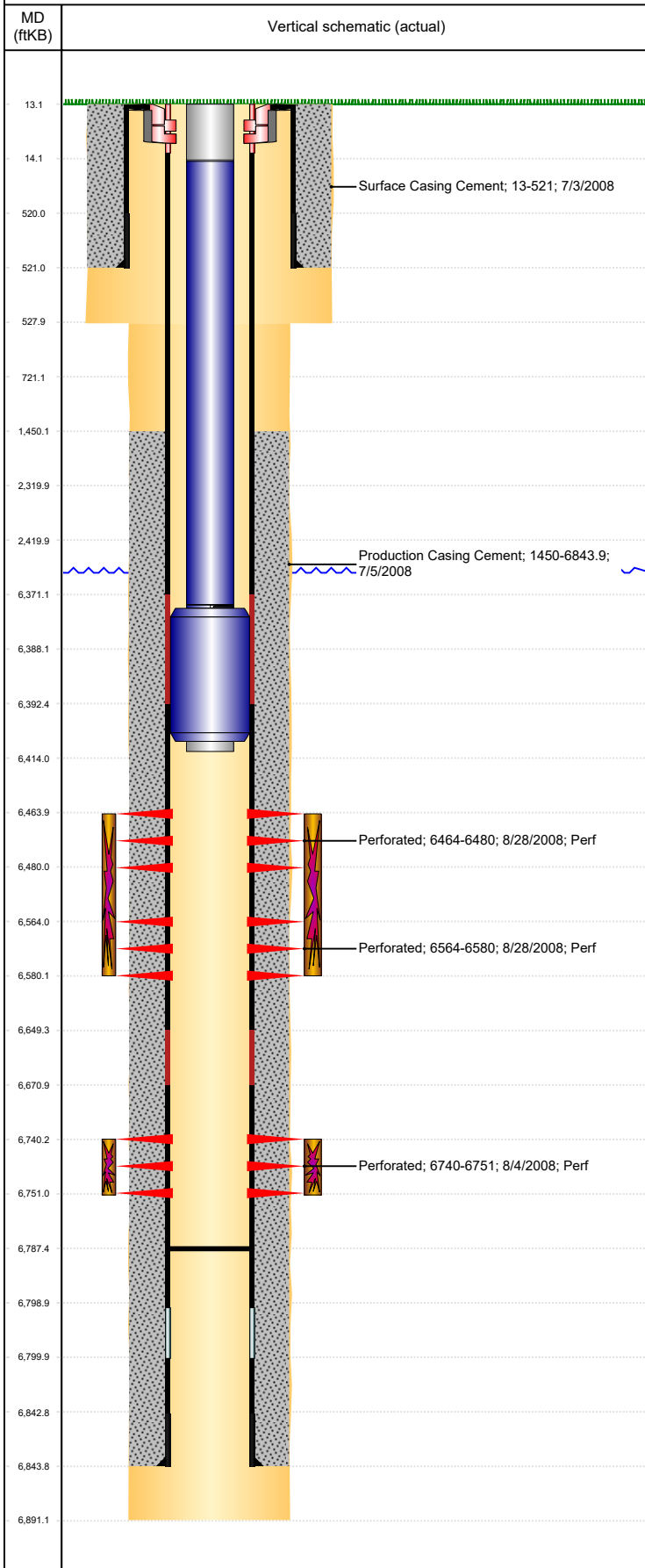




P&A Wellbore For State

Well Name: WELLS RANCH AA21-06

Land, Original Hole, 9/21/2022 11:39:17 AM



Well Header

Surface UWI 0512326812	Business Unit Rockies	Gov Auth Dist	Prod Tree Loc Land
Orig. KB to Gnd (ft) 13.00	Original Spud Date 7/3/2008	Abandon Date	Well Sub-Status SI
High... N			

Comment

SCIENTIFIC TESTING 4/2014

Surface Location (Congressional)

Qtr 3 SE	Qtr 4 NW	Section 21	Twnshp 6	Twnsh... N	Range 63	Rng E/... W	Latitude (°) 40.4741919	Longitude (°) -104.444680143
-------------	-------------	---------------	-------------	---------------	-------------	----------------	----------------------------	---------------------------------

Wellbore Sections

Section Des	Hole Size (in)	Act Top (ftKB)	Act Btm (ftKB)
SURFACE	12 1/4	13.0	528.0
PRODUCTION	7 7/8	528.0	6,891.0

Casing Strings

Csg Des	Run Date	OD (in)	Wt/Len (lb/ft)	Grade	Top Depth (MD) (ftKB)	Set Depth (MD) (ftKB)
Surface	7/3/2008	8 5/8	24.00	J-55	13	521
Production Casing	7/5/2008	4 1/2	11.60	M-80	13	6843.9

Cement

Des	Start Date	Top (ftKB)	Btm (ftKB)
Surface Casing Cement	7/3/2008	13.0	521.0
Production Casing Cement	7/5/2008	1,450.0	6,843.9

Zone Statuses

Zone Name	Status Date	Status	Fluid Type	Job	Prod Method
NIOBRARA	3/1/2010	PR	Water	DRILLING/COMPLETION - ORIGINAL, 7/3/2008...	Flowing
NIOBRARA	10/27/2016	SI			
CODELL	9/8/2008	PR			
CODELL	3/1/2010	PR	Water		Flowing

Perforation Data

Linked Zone	Explosive Type	Entered Shot Total	Top (ftKB)	Btm (ftKB)	Date
NIOBRARA, Original Hole	A	64	6,464.0	6,480.0	8/28/2008
NIOBRARA, Original Hole	B	64	6,564.0	6,580.0	8/28/2008
CODELL, Original Hole		44	6,740.0	6,751.0	8/4/2008

Stimulation Intervals

Zone	Start Date	Top (ftKB)	Btm (ftKB)
NIOBRARA, Original Hole	8/28/2008	6,464.0	6,580.0
CODELL, Original Hole	8/28/2008	6,740.0	6,751.0

Other In Hole

Run Date	Des	Make	OD (in)	Top (ftKB)	Btm (ftKB)

Logs

Date	Type	Depth Top (MD) (ftKB)	Btm (ftKB)
7/5/2008	Caliper/Comp. Density/Neutron/GR/SP/ML	2,540	6,844.0
7/5/2008	DIL/GR/SP/Caliper	521	6,864.0
7/10/2008	CBL/CCL/GR	1,350	6,766.0
3/20/2013	GYRO	13	6,700.0

Plug Back Total Depths

Date	Type	Com	PBTD (ftKB)
8/24/2011	FILL		6,776
3/20/2014	FILL		6,787