

### AS BUILT WELLBORE DIAGRAM

Operator:	<b>GMT Expl.Co., LLC</b>
Well:	<b>Amoco 11-4</b>
Sec-Twp-Rng:	<b>NW NW Sec 11-6S-65W</b>
SHL:	<b>0</b>
Lat/Long:	39.548576, -104. 639930
State & County:	Elbert County, Colorado
API #:	05-039-06356

Notes: 0

Spud date: 6/18/1981

**Updated**

Date: **6/30/2022**

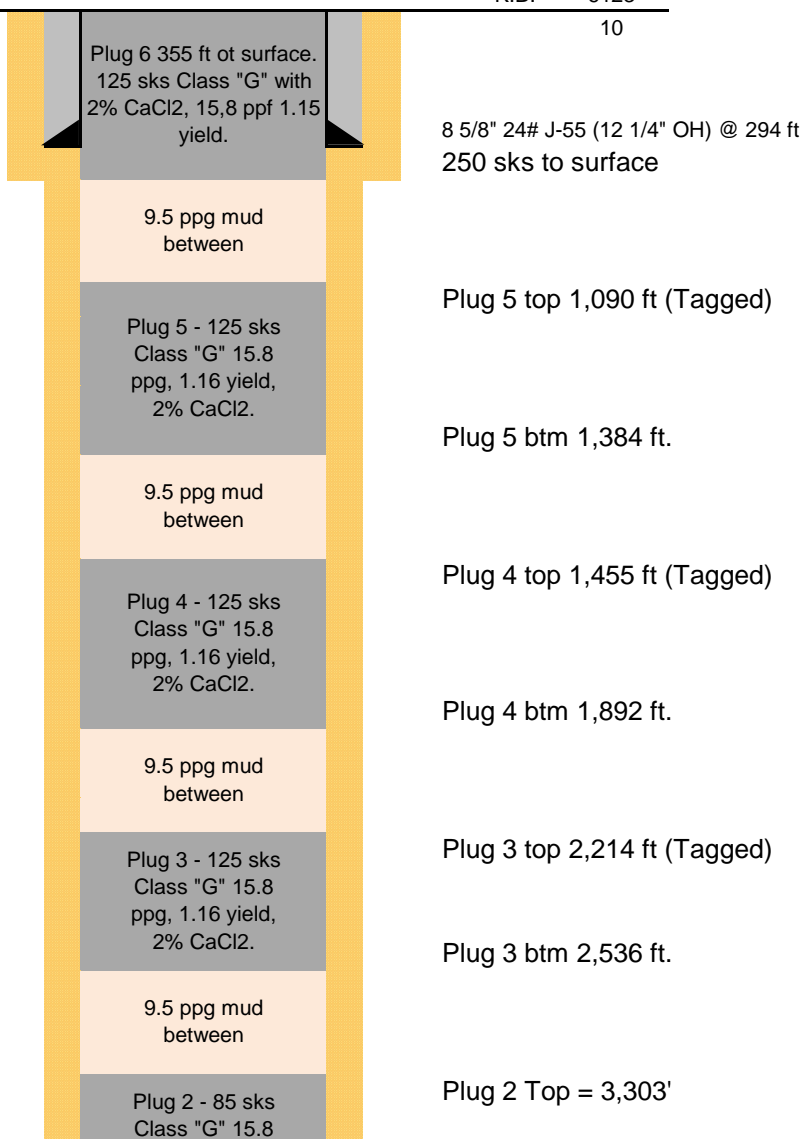
Initials: **MH**

Not to Scale

G.L.= 6113

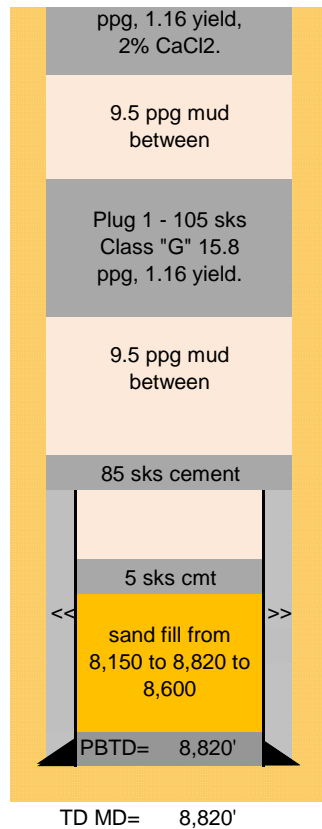
K.B.= 6123

10



*Formation Tops (ft)*

Niobrara	7930
Codell	8275
D-Sand	8648
J-Sand	8688



Plug 2 Bottom = 3,503'

Plug 1 Top = 7,048 ft. (Tagged).

Plug 1 Bottom = 7,213 ft

85 sks cement on top of casing stub.  
7,440 ft to 7,240 ft.

Casing cut off at 7,440 ft.

TOC @ 8,150 ft ( Calc 1 ft<sup>3</sup>/sk)

5 sks cmt on sand @ 8,600 ft.

J-sand Perfs 8,670' - 8,707'

4 1/2" 10.5 & 11.6 J-55 @ 8,810 ft.

CMT with 150 sks