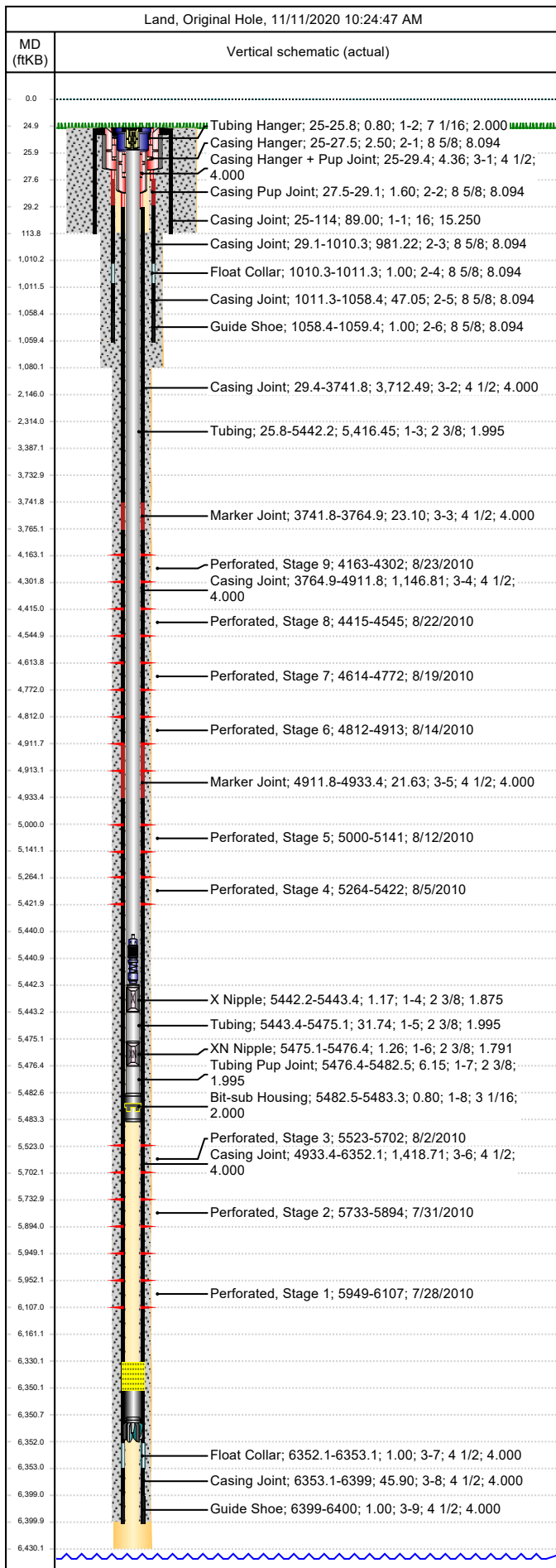




Wellbore Schematic

Well Name SKR-598-25-CV-02	Lease Chevron USA	Field Name Skinner Ridge	Business Unit Mid-Continent
-------------------------------	----------------------	-----------------------------	--------------------------------

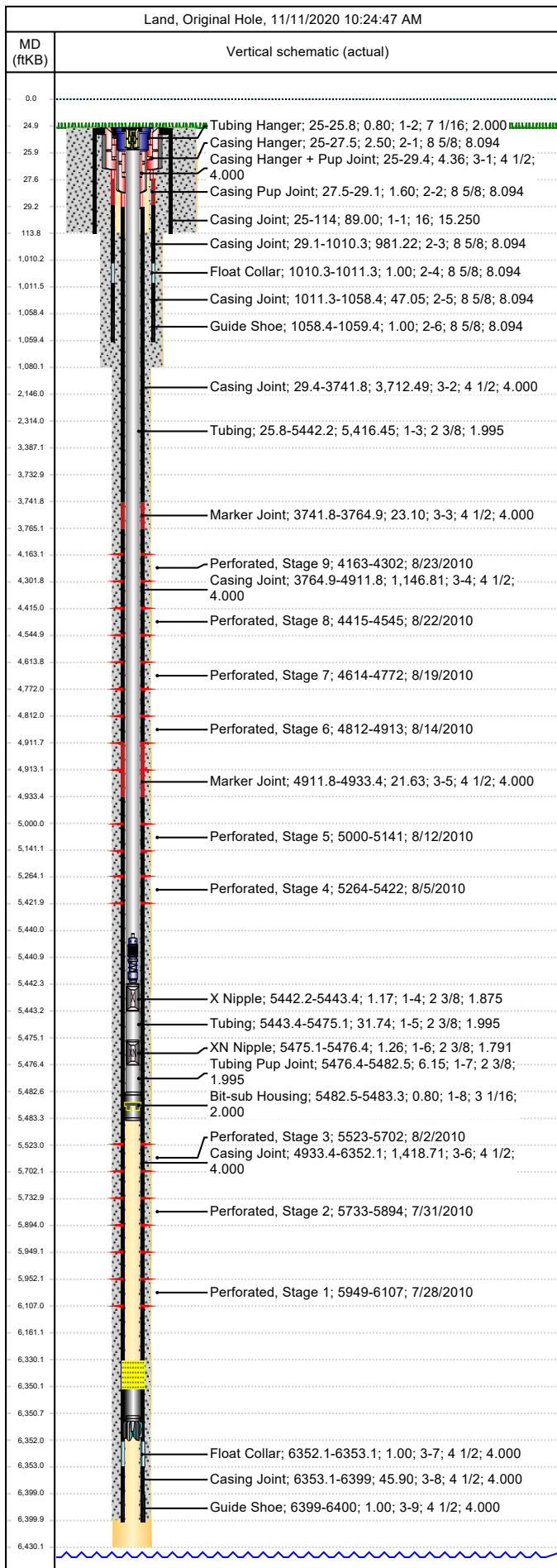


Job Details						
Job Category			Start Date		Rig/Unit End Date	
Well Services			2/11/2015		2/11/2015	
Casing Strings						
Csg Des	OD (in)	Wt/Len (lb/ft)	Grade	Top Thread	Set Depth (MD) (ftKB)	
Conductor	16	65.00	H-40		114	
Surface	8 5/8	24.00	K-55		1059.4	
Production Casing	4 1/2	11.60	N-80		6400	
Tubing Strings						
Tubing - Production set at 5,483.3ftKB on 9/13/2010 17:30						
Tubing Description			Run Date	String Length (ft)	Set Depth (MD) (ftKB)	
Tubing - Production			9/13/2010	5,483.37	5,483.3	
Item Des	Jts	OD (in)	Wt (lb/ft)	Grade	Len (ft)	Btm (ftKB)
KBGL					25.00	25.0
Tubing Hanger		7 1/16			0.80	25.8
Tubing	171	2 3/8	4.70	L-80	5,416.45	5,442.2
X Nipple		2 3/8			1.17	5,443.4
Tubing	1	2 3/8	4.70	L-80	31.74	5,475.1
XN Nipple		2 3/8			1.26	5,476.4
Tubing Pup Joint		2 3/8	4.70	L-80	6.15	5,482.5
Bit-sub Housing		3 1/16			0.80	5,483.3
Tubing Landed @						5,483.3
Perforations						
Date	Top (ftKB)	Btm (ftKB)	Shot Dens (shots/ft)	Entered Shot Total	Linked Zone	
8/23/2010	4,163.0	4,302.0	3.0	24	Mesa Verde - WMFK - Williams Fork, Original Hole	
8/22/2010	4,415.0	4,545.0	3.0	27	Mesa Verde - WMFK - Williams Fork, Original Hole	
8/19/2010	4,614.0	4,772.0	3.0	27	Mesa Verde - WMFK - Williams Fork, Original Hole	
8/14/2010	4,812.0	4,913.0	3.0	24	Mesa Verde - WMFK - Williams Fork, Original Hole	
8/12/2010	5,000.0	5,141.0	3.0	24	Mesa Verde - WMFK - Williams Fork, Original Hole	
8/5/2010	5,264.0	5,422.0	3.0	21	Mesa Verde - WMFK - Williams Fork, Original Hole	
8/2/2010	5,523.0	5,702.0	3.0	24	Mesa Verde - WMFK - Williams Fork, Original Hole	
7/31/2010	5,733.0	5,894.0	3.0	21	Mesa Verde - WMFK - Williams Fork, Original Hole	
7/28/2010	5,949.0	6,107.0	3.0	24	Mesa Verde - WMFK - Cameo Coal, Original Hole	
Other Strings						
Run Date	Pull Date	Set Depth (ftKB)	Com			
Other In Hole						
Des	Top (ftKB)	Btm (ftKB)	Run Date	Pull Date	Com	
4 1/2" CBP, top plug	4,110.0	4,112.0	8/30/2010	9/7/2010		
4 1/2" CFP	4,318.0	4,320.0	8/23/2010	9/7/2010	Tag w/ CFP @ 4330', contact Kieth, set CFP high, leave out bott 3 sets perms, add 2 - additional.	
4 1/2" CFP	4,594.0	4,596.0	8/22/2010	9/8/2010		
4 1/2" CFP	4,774.0	4,776.0	8/19/2010	9/8/2010	Tag high, 4776, set CFP 4774	
4 1/2" CFP	4,980.0	4,982.0	8/12/2010	9/8/2010		
4 1/2" CFP	5,220.0	5,222.0	8/12/2010	9/8/2010		
Tubing Plunger	5,440.1	5,440.9	2/11/2015			
Bumper Spring	5,440.9	5,442.1	2/11/2015			
4 1/2" CFP	5,503.0	5,505.0	8/5/2010	9/8/2010		
4 1/2" CFP	5,717.0	5,719.0	8/2/2010	9/9/2010		
Fish	5,910.0	5,918.0	7/31/2010	9/10/2010	Setting tool. 2-1/2" OD, swedges out to 3-5/8" at the bottom.	



Wellbore Schematic

Well Name SKR-598-25-CV-02	Lease Chevron USA	Field Name Skinner Ridge	Business Unit Mid-Continent
-------------------------------	----------------------	-----------------------------	--------------------------------



Other In Hole					
Des	Top (ftKB)	Btm (ftKB)	Run Date	Pull Date	Com
Bridge Plug (Permanent) Fasdrill	5,918.0	5,920.0	7/31/2010	9/13/2010	
Fill (Sand / Mud / Debris)	6,330.0	6,350.0	4/19/2012		Tag w/ slickline, 2/11/2015
Fill, 1/27/2011	6,337.0	6,352.0	1/27/2011	4/19/2012	Tag w/ slickline, 1/27/11
Pumped off	6,350.0	6,350.8	9/13/2010		BIT SUB - PUMPED OFF
Mill	6,350.8	6,352.0	9/13/2010		3 7/8" MILL - PUMPED OFF