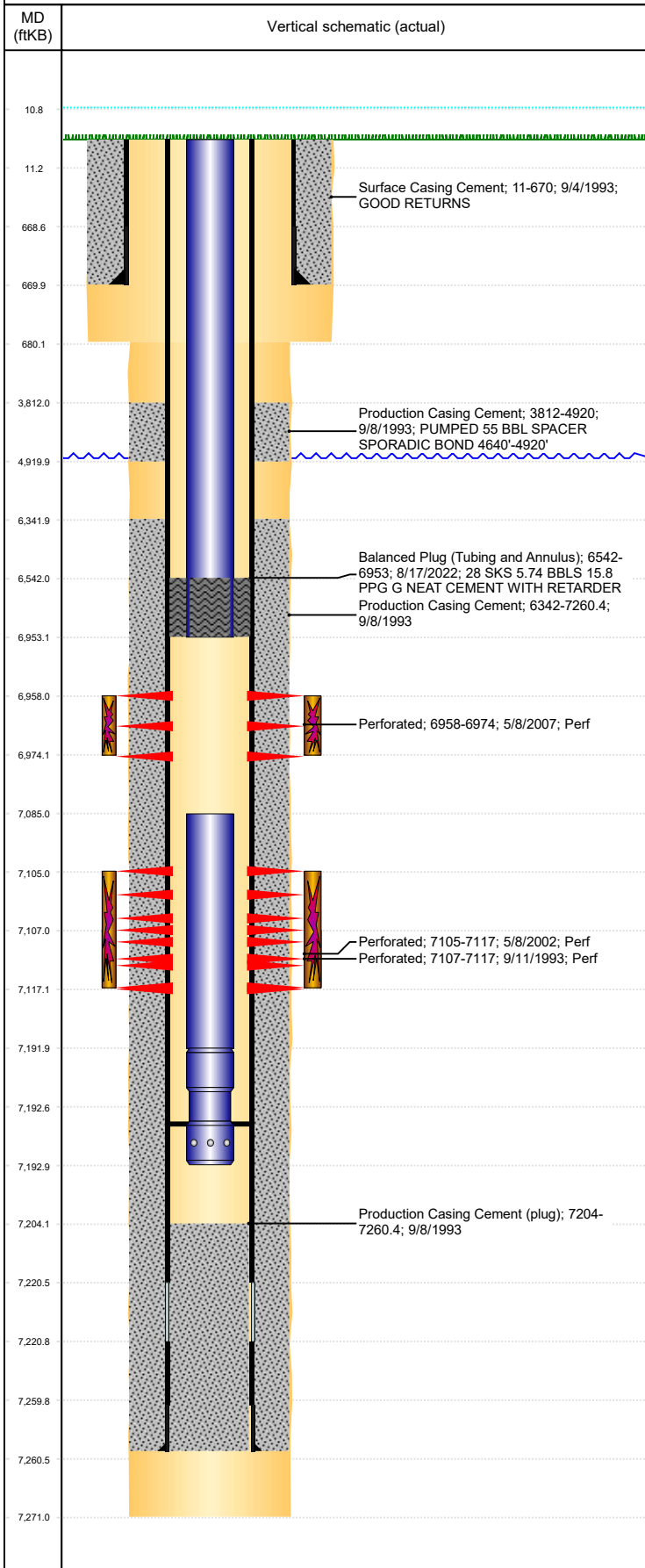




P&A Wellbore For State

Well Name: UPRC 13-06J

Land, Original Hole, 9/8/2022 10:21:20 AM



| Well Header | | | | | | | | | |
|------------------------------------|-------------|--------------------------------|--------------------|--|---------------|-----------------------|----------------------------------|---------------------------------|--------------|
| Surface UWI 0512316997 | | Business Unit Rockies | | | Gov Auth Dist | | Prod Tree Loc Land | | |
| Orig. KB to Gnd (ft) 11.00 | | Original Spud Date 9/4/1993 | | Abandon Date | | Well Sub-Status TA | | | High... N |
| Comment WELLHEAD IS 3000# | | | | | | | | | |
| Surface Location (Congressional) | | | | | | | | | |
| Qtr 3 SE | Qtr 4 NW | Section 13 | Twnshp 3 | Twnshp... N | Range 65 | Rng E/... W | Latitude (°) 40.22740680 8 | Longitude (°) -104.613464736 | |
| Wellbore Sections | | | | | | | | | |
| Section Des | | | Hole Size (in) | | | Act Top (ftKB) | | Act Btm (ftKB) | |
| SURFACE | | | 12 1/4 | | | 11.0 | | 680.0 | |
| PRODUCTION | | | 7 7/8 | | | 680.0 | | 7,271.0 | |
| Casing Strings | | | | | | | | | |
| Csg Des | | Run Date | OD (in) | Wt/Len (lb/ft) | Grade | Top Depth (MD) (ftKB) | Set Depth (MD) (ftKB) | | |
| Surface | | 9/4/1993 | 8 5/8 | 23.00 | M-50 | 11 | 670 | | |
| Production Casing | | 9/8/1993 | 4 1/2 | 11.60 | N-80 | 11 | 7260.4 | | |
| Cement | | | | | | | | | |
| Des | | | | Start Date | | Top (ftKB) | | Btm (ftKB) | |
| Surface Casing Cement | | | | 9/4/1993 | | 11.0 | | 670.0 | |
| Production Casing Cement | | | | 9/8/1993 | | 3,812.0 | | 4,920.0 | |
| Production Casing Cement | | | | 9/8/1993 | | 6,342.0 | | 7,260.4 | |
| Balanced Plug (Tubing and Annulus) | | | | 8/17/2022 | | 6,542.0 | | 6,953.0 | |
| Zone Statuses | | | | | | | | | |
| Zone Name | Status Date | Status | Fluid Type | Job | | | | Prod Method | |
| CODELL | 1/29/2010 | PR | Water | Abandon Well - Temporary, 8/5/2022 08:00 | | | | Flowing | |
| CODELL | 8/17/2022 | Closed | | | | | | | |
| NIOBRARA | 6/30/2017 | SI | | | | | | | |
| NIOBRARA | 8/17/2022 | Closed | | | | | | | |
| Perforation Data | | | | | | | | | |
| Linked Zone | | Explosive Type | Entered Shot Total | Top (ftKB) | | Btm (ftKB) | | Date | |
| NIOBRARA, Original Hole | | | 64 | 6,958.0 | | 6,974.0 | | 5/8/2007 | |
| CODELL, Original Hole | | | 44 | 7,105.0 | | 7,117.0 | | 5/8/2002 | |
| CODELL, Original Hole | | | 20 | 7,107.0 | | 7,117.0 | | 9/11/1993 | |
| Stimulation Intervals | | | | | | | | | |
| Zone | | | Start Date | | | Top (ftKB) | | Btm (ftKB) | |
| NIOBRARA, Original Hole | | | 6/13/2007 | | | 6,958.0 | | 6,974.0 | |
| CODELL, Original Hole | | | 5/17/2002 | | | 7,105.0 | | 7,117.0 | |
| CODELL, Original Hole | | | 9/21/1993 | | | 7,107.0 | | 7,117.0 | |
| Other In Hole | | | | | | | | | |
| Run Date | | Des | | | Make | | OD (in) | Top (ftKB) | Btm (ftKB) |
| | | | | | | | | | |
| Logs | | | | | | | | | |
| Date | | Type | | | | | Depth Top (MD) (ftKB) | | Btm (ftKB) |
| 9/7/1993 | | INDUCTION | | | | | 670 | | 7,269.0 |
| 9/11/1993 | | CEMENT BOND | | | | | 6,100 | | 7,197.0 |
| 3/8/2011 | | GYRO | | | | | 10 | | 7,000.0 |
| Plug Back Total Depths | | | | | | | | | |
| Date | | Type | | | Com | | | | PBTD (ftKB) |
| 5/20/2002 | | FILL | | | TAGGED FILL | | | | 7,165 |
| 6/25/2007 | | FILL | | | CLEAN OUT | | | | 7,193 |