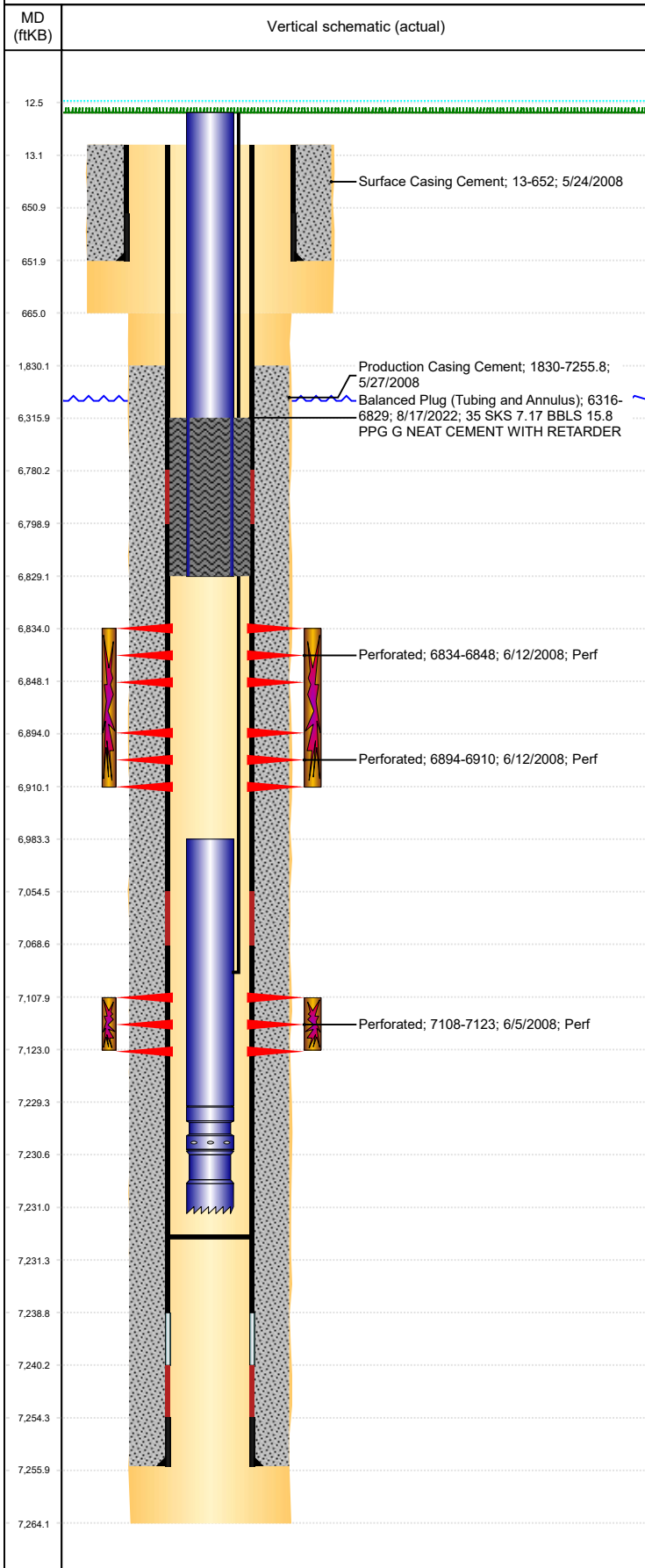




P&A Wellbore For State

Well Name: HOUNDSKEEPER H01-17

Land, Original Hole, 9/8/2022 10:19:23 AM



Well Header									
Surface UWI 0512325800			Business Unit Rockies			Gov Auth Dist		Prod Tree Loc Land	
Orig. KB to Gnd (ft) 12.60		Original Spud Date 5/24/2008		Abandon Date		Well Sub-Status TA			High... N
Comment 318A LOCATION!									
Surface Location (Congressional)									
Qtr 3 SE	Qtr 4 NE	Section 1	Twnshp 3	Twنش... N	Range 65	Rng E/... W	Latitude (°) 40.25748992 6	Longitude (°) -104.606974431	
Wellbore Sections									
Section Des			Hole Size (in)			Act Top (ftKB)		Act Btm (ftKB)	
SURFACE			12 1/4			13.0		665.0	
PRODUCTION			7 7/8			665.0		7,264.0	
Casing Strings									
Csg Des		Run Date		OD (in)	Wt/Len (lb/ft)	Grade	Top Depth (MD) (ftKB)	Set Depth (MD) (ftKB)	
Surface		5/24/2008		8 5/8	24.00	J-55	13	652	
Production Casing		5/27/2008		4 1/2	11.60	M-80	13	7255.8	
Cement									
Des				Start Date		Top (ftKB)		Btm (ftKB)	
Surface Casing Cement				5/24/2008		13.0		652.0	
Production Casing Cement				5/27/2008		1,830.0		7,255.8	
Balanced Plug (Tubing and Annulus)				8/17/2022		6,316.0		6,829.0	
Zone Statuses									
Zone Name	Status Date	Status	Fluid Type	Job				Prod Method	
NIOBRARA	1/29/2010	PR	Water	Abandon Well - Temporary, 8/5/2022 09:30				Flowing	
NIOBRARA	8/17/2022	Closed	Water						
CODELL	9/22/2016	SI	Water	Abandon Well - Temporary, 8/5/2022 09:30					
CODELL	8/17/2022	Closed							
Perforation Data									
Linked Zone		Explosive Type	Entered Shot Total	Top (ftKB)		Btm (ftKB)		Date	
NIOBRARA, Original Hole		A	64	6,834.0		6,848.0		6/12/2008	
NIOBRARA, Original Hole		B	64	6,894.0		6,910.0		6/12/2008	
CODELL, Original Hole			60	7,108.0		7,123.0		6/5/2008	
Stimulation Intervals									
Zone			Start Date			Top (ftKB)		Btm (ftKB)	
NIOBRARA, Original Hole			6/12/2008			6,834.0		6,910.0	
CODELL, Original Hole			6/12/2008			7,108.0		7,123.0	
Other In Hole									
Run Date	Des			Make		OD (in)	Top (ftKB)	Btm (ftKB)	
Logs									
Date		Type				Depth Top (MD) (ftKB)		Btm (ftKB)	
5/27/2008		Caliper/Comp. Density/Neutron/GR/SP/ML				2,600		7,235.0	
5/27/2008		DIL/GR/SP/Caliper				665		7,255.0	
6/4/2008		CBL/CCL/GR				1,730		7,219.0	
9/17/2013		GYRO				12		7,050.0	
Plug Back Total Depths									
Date		Type		Com				PBTD (ftKB)	
10/10/2008		PLUG REMNANTS		PUSHED CIPF TO. THATS 96' OF RAT HOLE.				7,219	
7/21/2014		FILL		TBG TALLY MEASUREMENT. 108.15' OF RATHOLE.				7,231	