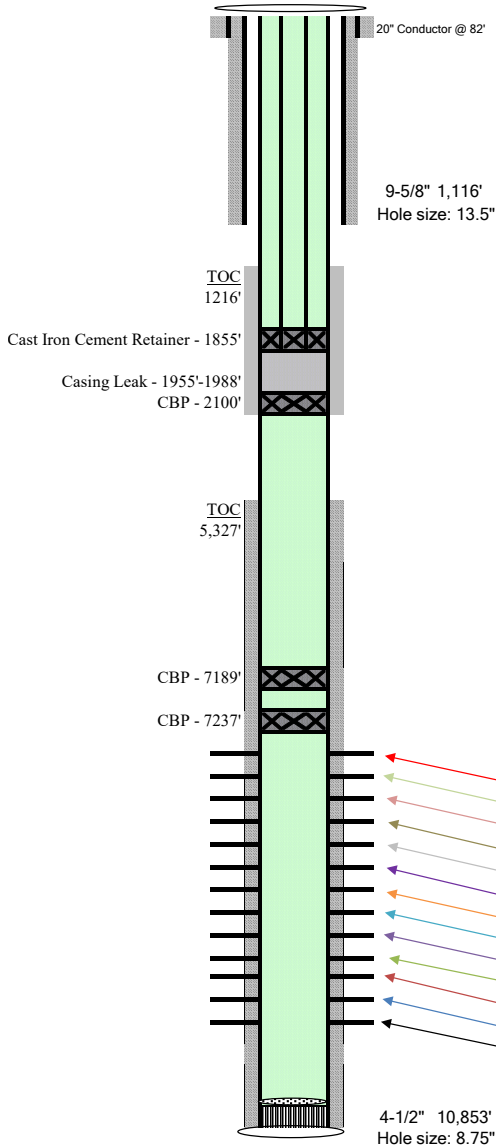


NR 442-3

Proposed Cement Squeeze WBD



Well Name **FED NR 442-3**
 Location **NESW 3 6S94W 6 PM**
 Field **North Rulison**
 County **Garfield, CO**
 API **05-045-24474**
 Elevation **6,730'**
 Footages **6,760'**
2408 FSL, 1283 FWL

Spud 03/25/2022

Conductor Casing	82'	20"	78.67# X65
Surf Casing	1,116'	9-5/8"	36# J55 LTC
Cement	Lead	122 Sks 12.3#	
	Tail	174 Sks 12.8#	
Prod Casing	0-10853'	4-1/2"	11.6# P-110 BTC
Cement	Lead	463 Sks 12.7#	
	Tail	722 Sks 14.2#	

Squeeze Calculations

4-1/2" OD 11.6# csg in 8-3/4" Hole, 0.054704 bbls/ft, 0.307141 ft³/ft
 4-1/2" OD 11.6# csg capacity, 0.015543 bbls/ft, 0.087268 ft³/ft
 51.2 Total bbls, 250 sks - 15.8# Class G Neat, 1.15 ft³/sks, 4.564 gal/sack water mix
 739' CMT in annulus, 1955' - 1216', 48.5 bbls with 20% Excess

TOC - Bond Log 5,327'

Production Intervals

	Top Perf	Bottom Perf	Shots	PHZ	Diameter
MV11	7,404'	7,656'	24	120°	0.35"
MV10	8,618'	8,759'	24	120°	0.35"
MV9	8,786'	8,949'	24	120°	0.35"
MV8	8,975'	9,111'	24	120°	0.35"
MV7	9,128'	9,300'	24	120°	0.35"
MV6	9,315'	9,480'	24	120°	0.35"
MV5	9,500'	9,672'	24	120°	0.35"
MV4	9,702'	9,849'	24	120°	0.35"
MV3	9,868'	10,040'	24	120°	0.35"
MV2	10,059'	10,238'	24	120°	0.35"
MV1	10,257'	10,421'	24	120°	0.35"
Cameo	10,436'	10,609'	24	120°	0.35"
Lower Cameo	10,636'	10,799'	24	120°	0.35"

Prepared By: Lukas Van Zyl
 office phone:
 cell phone: 303-815-2966

Revision Date:
 9/7/2022