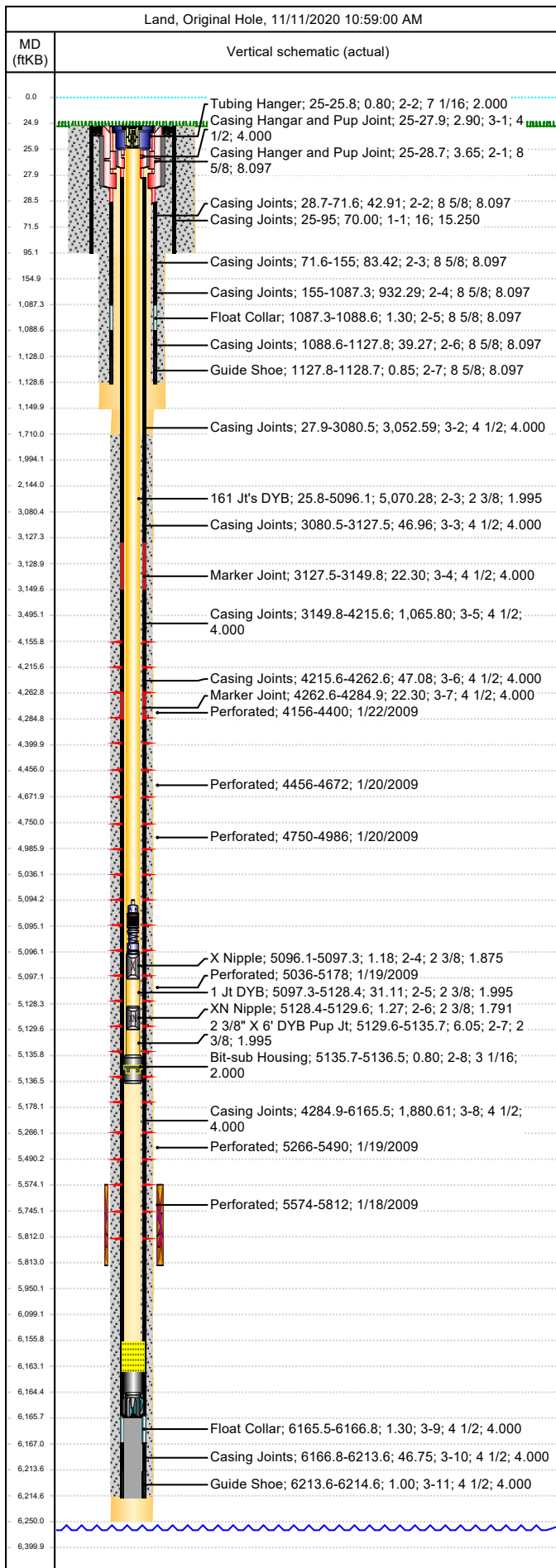




Wellbore Schematic

Well Name SKR-598-35-AV-18	Lease Chevron USA	Field Name Skinner Ridge	Business Unit Mid-Continent
-------------------------------	----------------------	-----------------------------	--------------------------------

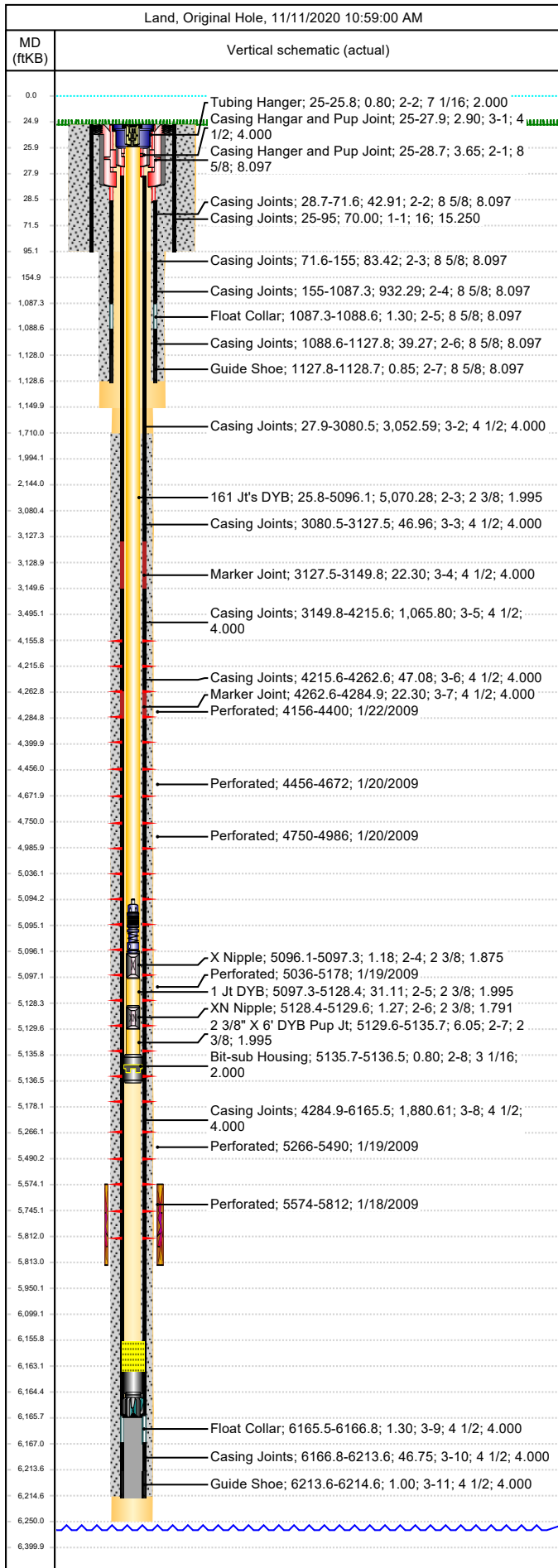


Job Details								
Job Category				Start Date		Rig/Unit End Date		
Well Services				2/9/2015		2/9/2015		
Casing Strings								
Csg Des	OD (in)	Wt/Len (lb/ft)	Grade		Top Thread	Set Depth (MD) (ftKB)		
Conductor	16					95		
Surface	8 5/8	24.00	K-55		ST&C	1128.7		
Production Casing	4 1/2	11.60	N-80		LTC	6214.6		
Tubing Strings								
Tubing - Production set at 5,136.5ftKB on 8/28/2014 19:00								
Tubing Description			Run Date		String Length (ft)		Set Depth (MD) (ftKB)	
Tubing - Production			8/28/2014		5,136.49		5,136.5	
Item Des		Jts	OD (in)	Wt (lb/ft)	Grade	Len (ft)	Btm (ftKB)	
KBGL						25.00	25.0	
Tubing Hanger			7 1/16		4140	0.80	25.8	
161 Jt's DYB		161	2 3/8	4.70	L-80	5,070.28	5,096.1	
X Nipple			2 3/8			1.18	5,097.3	
1 Jt DYB		1	2 3/8	4.70	L-80	31.11	5,128.4	
XN Nipple			2 3/8			1.27	5,129.6	
2 3/8" X 6' DYB Pup Jt			2 3/8	4.70	L-80	6.05	5,135.7	
Bit-sub Housing			3 1/16			0.80	5,136.5	
Tubing Landed @							5,136.5	
Perforations								
Date	Top (ftKB)	Btm (ftKB)	Shot Dens (shots/ft)	Entered Shot Total	Linked Zone			
1/22/2009	4,156.0	4,400.0	3.0	30	Mesa Verde - WMFK - Williams Fork, Original Hole			
1/20/2009	4,456.0	4,672.0	3.0	30	Mesa Verde - WMFK - Williams Fork, Original Hole			
1/20/2009	4,750.0	4,986.0	3.0	30	Mesa Verde - WMFK - Williams Fork, Original Hole			
1/19/2009	5,036.0	5,178.0	3.0	27	Mesa Verde - WMFK - Williams Fork, Original Hole			
1/19/2009	5,266.0	5,490.0	3.0	24	Mesa Verde - WMFK - Williams Fork, Original Hole			
1/18/2009	5,574.0	5,812.0	3.0	30	Mesa Verde - WMFK - Cameo Coal, Original Hole			
Other Strings								
Run Date		Pull Date	Set Depth (ftKB)		Com			
Other In Hole								
Des	Top (ftKB)	Btm (ftKB)	Run Date	Pull Date	Com			
Solid Composite Plug	4,110.0	4,112.0	1/22/2009	4/27/2009				
Composite BIO Ball Frac Plug	4,436.0	4,438.0	1/22/2009	4/28/2009				
Composite BIO Ball Frac Plug	4,710.0	4,712.0	1/20/2009	4/28/2009				
Composite BIO Ball Frac Plug	5,006.0	5,008.0	1/20/2009	4/28/2009				
Tubing Plunger	5,094.1	5,095.1	2/9/2015					
Bumper Spring	5,095.1	5,096.1	2/9/2015					
Tubing Plunger	5,149.1	5,150.1	11/9/2009	4/24/2014				
Bumper Spring	5,150.1	5,152.1	11/9/2009	4/24/2014				
Composite BIO Ball Frac Plug	5,210.0	5,212.0	1/19/2009	4/28/2009				
Composite BIO Ball Frac Plug	5,502.0	5,504.0	1/19/2009	4/28/2009				
Fill Tag, 4/24/2014	5,969.0	6,063.0	4/24/2014	8/28/2014				
Fill, 11/9/2009	6,063.0	6,165.8	11/9/2009	8/28/2014				
Fill (Sand / Mud / Debris)	6,156.0	6,163.2	2/9/2015					
Pumped Off Bit-sub	6,163.2	6,164.4	4/27/2009					
Mill	6,164.4	6,165.6	4/27/2009		KR's mill & bit sub, FT 3 5/16" X 1', mill OD 3 7/8"			



Wellbore Schematic

Well Name SKR-598-35-AV-18	Lease Chevron USA	Field Name Skinner Ridge	Business Unit Mid-Continent
-------------------------------	----------------------	-----------------------------	--------------------------------



Other In Hole					
Des	Top (ftKB)	Btm (ftKB)	Run Date	Pull Date	Com
PBTD	6,165.6	6,214.6			