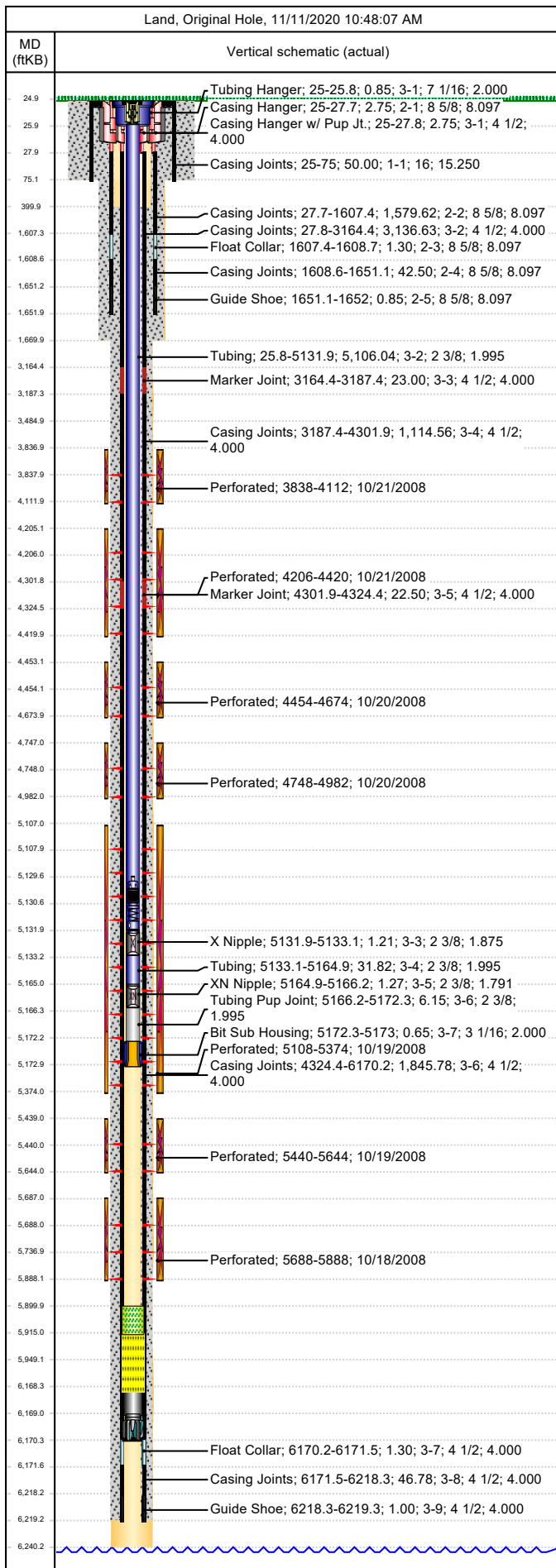




Wellbore Schematic

Well Name SKR-598-35-AV-04	Lease Chevron USA	Field Name Skinner Ridge	Business Unit Mid-Continent
-------------------------------	----------------------	-----------------------------	--------------------------------



Job Details						
Job Category			Start Date		Rig/Unit End Date	
Major Rig Work Over (MRWO)			6/4/2015		6/8/2015	
Casing Strings						
Csg Des	OD (in)	Wt/Len (lb/ft)	Grade	Top Thread	Set Depth (MD) (ftKB)	
Conductor	16				75	
Surface	8 5/8	24.00	K-55		1652	
Production Casing	4 1/2	11.60	N-80	LTC	6219.3	
Tubing Strings						
Tubing - Production set at 5,173.0ftKB on 6/5/2015 16:00						
Tubing Description			Run Date		String Length (ft)	Set Depth (MD) (ftKB)
Tubing - Production			6/5/2015		5,147.99	5,173.0
Item Des	Jts	OD (in)	Wt (lb/ft)	Grade	Len (ft)	Btm (ftKB)
Tubing Hanger	1	7 1/16		4140	0.85	25.8
Tubing	159	2 3/8	4.70	L-80	5,106.04	5,131.9
X Nipple	1	2 3/8			1.21	5,133.1
Tubing	1	2 3/8	4.70	L-80	31.82	5,164.9
XN Nipple	1	2 3/8			1.27	5,166.2
Tubing Pup Joint	1	2 3/8	4.70	L-80	6.15	5,172.3
Bit Sub Housing	1	3 1/16			0.65	5,173.0
Perforations						
Date	Top (ftKB)	Btm (ftKB)	Shot Dens (shots/ft)	Entered Shot Total	Linked Zone	
10/21/2008	3,838.0	4,112.0	3.0	30	Mesa Verde - WMFK - Williams Fork, Original Hole	
10/21/2008	4,206.0	4,420.0	3.0	27	Mesa Verde - WMFK - Williams Fork, Original Hole	
10/20/2008	4,454.0	4,674.0	3.0	30	Mesa Verde - WMFK - Williams Fork, Original Hole	
10/20/2008	4,748.0	4,982.0	3.0	27	Mesa Verde - WMFK - Williams Fork, Original Hole	
10/19/2008	5,108.0	5,374.0	3.0	30	Mesa Verde - WMFK - Williams Fork, Original Hole	
10/19/2008	5,440.0	5,644.0	3.0	27	Mesa Verde - WMFK - Williams Fork, Original Hole	
10/18/2008	5,688.0	5,888.0	3.0	30	Mesa Verde - WMFK - Cameo Coal, Original Hole	
Other Strings						
Run Date	Pull Date	Set Depth (ftKB)	Com			
1/9/2009	6/4/2015	5,131.9	Pressure and Temp gauges with fiber optics			
Other In Hole						
Des	Top (ftKB)	Btm (ftKB)	Run Date	Pull Date	Com	
Composite flow thru frac plug	4,132.0	4,134.0	10/21/2008	10/30/2008		
Composite flow thru frac plug	4,437.0	4,439.0	10/21/2008	10/30/2008		
Composite flow thru frac plug	4,700.0	4,702.0	10/20/2008	10/30/2008		
Composite flow thru frac plug	5,002.0	5,004.0	10/20/2008	10/30/2008		
Tubing Plunger	5,129.5	5,130.5	6/10/2015			
Bumper Spring	5,130.5	5,132.0	6/10/2015			
Composite flow thru frac plug	5,398.0	5,400.0	10/19/2008	10/30/2008		
Composite flow thru frac plug	5,676.0	5,678.0	10/19/2008	10/31/2008		
Fill Tag,5/14/2015	5,900.0	5,915.0	5/14/2015			
Fill (Sand / Mud / Debris)	5,915.0	6,168.4	4/24/2014			
Pumped off	6,168.4	6,169.0	11/3/2008		FISH	
Mill	6,169.0	6,170.2	11/3/2008		FISH	