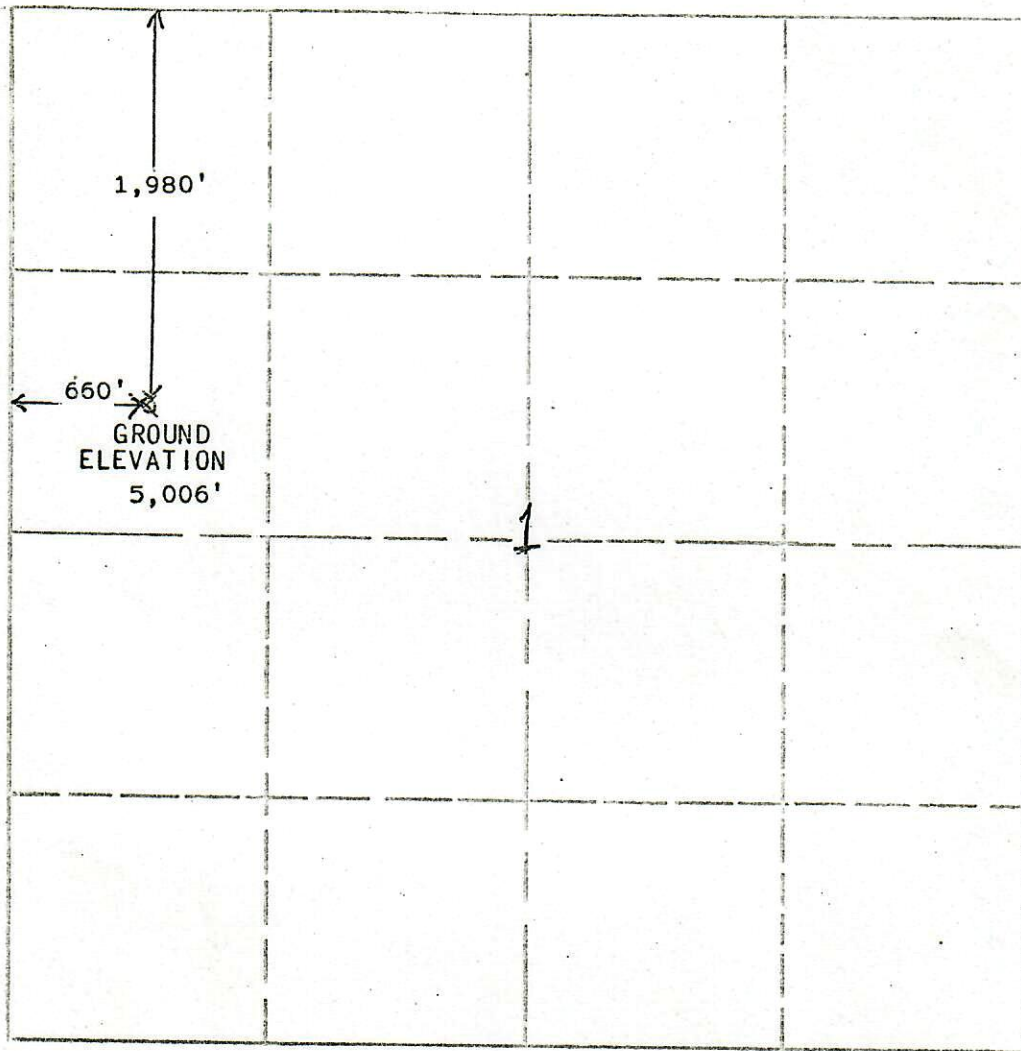




00230473

RECEIVED  
APR 21 1977  
COLO. OIL & GAS CONS. COMM.

R. 61 WT. 3 S

SCALE/1"=1000"

77-351

SAGE ENGINEERS, INC. of FORT LUPTON, COLORADO  
has in accordance with a request from MR. GOLLHOFFER  
for AMOCO PRODUCTION CO.  
determined the location of CHAMPLIN 351 - AMOCO A - 2  
to be THE CENTER OF SW/4 NW/4 SECTION 1 - T 3 S - R 61 W OF  
THE 6TH P.M., ADAMS COUNTY, COLORADO

I hereby certify that this plat is an  
accurate representation of a correct  
survey showing the location of

DATE: APRIL 14, 1977

SIGNED: Gail A. Bagley  
LICENSED LAND SURVEYER NO. 12294  
STATE OF COLORADO