

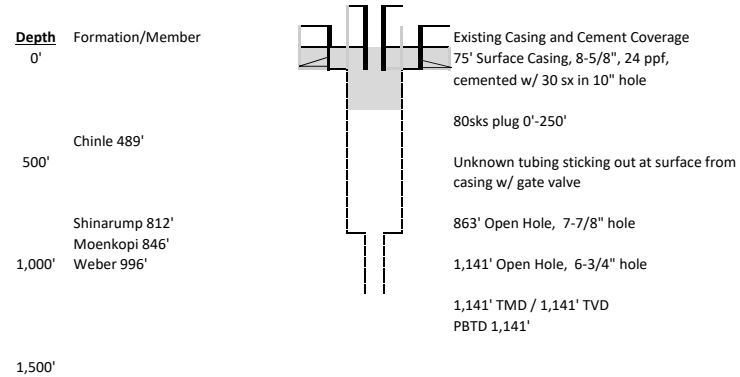
Verva Bowen #1: Task 2 - Plug and Abandon - 382714, 045-06006

Verva Bowen 1

Prepared	4/13/2022	Notes: Spud 9/7/1969 Deepest water well within a mile is 350' deep
FIELD NAME	Wildcat	
FIELD NUMBER	99999	

LOCATION

Basin	Piceance	Mineral Onwer: Fee
Location-Townships	5S	Surface Owner: Fee
Location-Ranges	92W	
Elevation	6,110'	



	Space	Hole/Csg	Csg
Casing		8.625	
Open Hole		7.875	
Open Hole		6.75	
	Plug #	sx	bbls
	1	25	5.0
	2	35	7.0
	3	150	30.0
Total		210	42

*BOP or other mechanical method should be used for well control

