

POWERS ELEVATION CO., INC.  
P.O. Box 440889  
Aurora, CO 80044  
(303) 321-2217

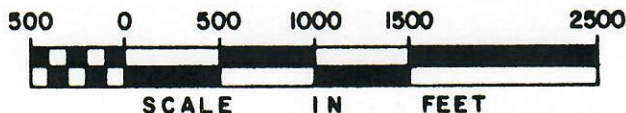
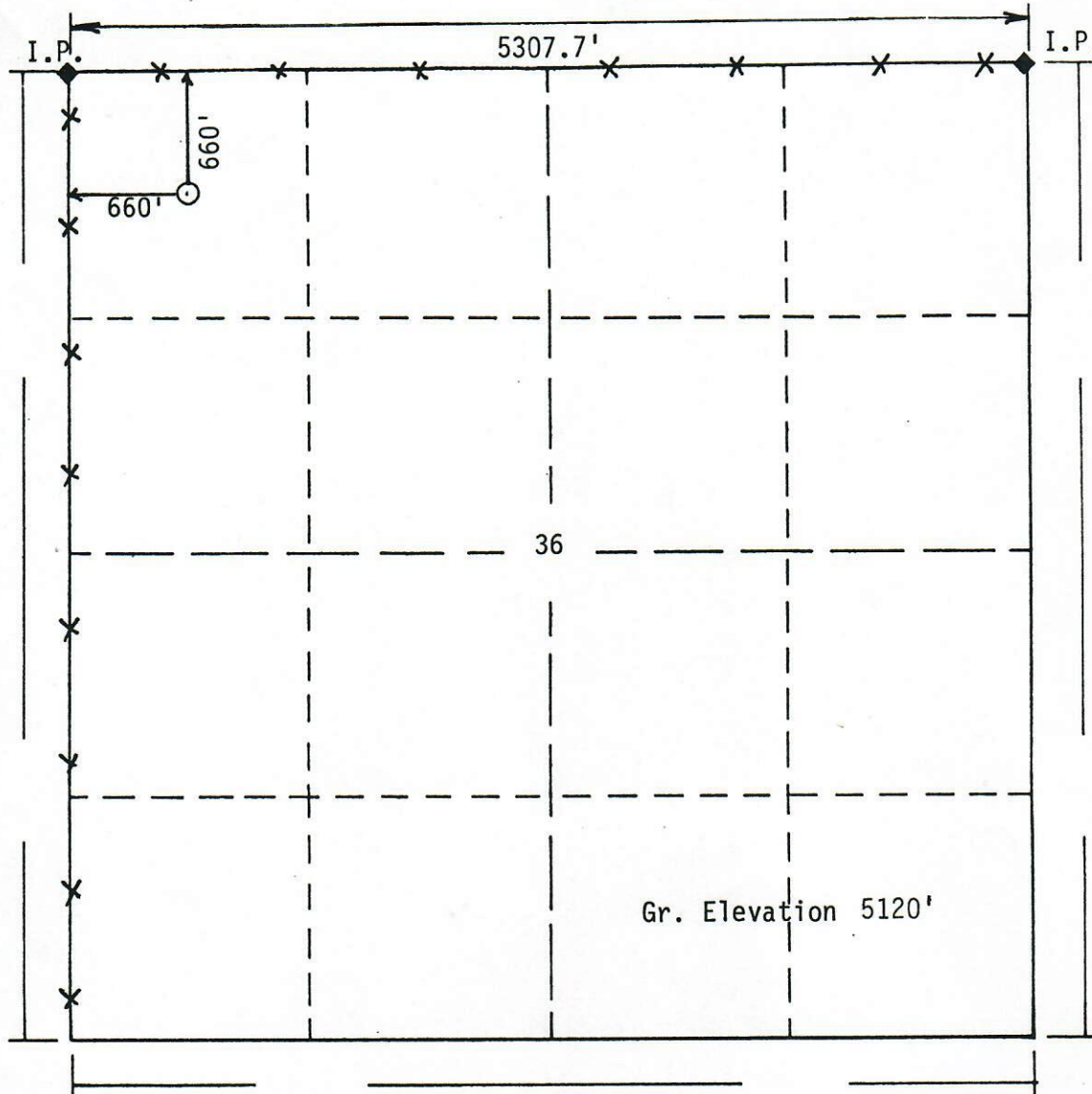


00334276  
K, UUW

ALL POWERS ELEVATION CO., INC.  
elevations originate from  
accepted U.S. Benchmarks

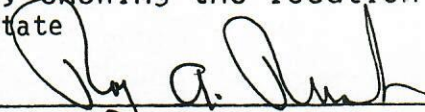


BASIS OF BEARING:



Powers Elevation Co., Inc. of Denver, Colorado has in accordance  
with a request from Dean Rogers for Aberdeen Petroleum (USA) Inc.  
determined the location of 1-36 State  
to be 660' fnl, 660' fw1 Section 36 , Township 3S  
Range 60W of the 6th Principal Meridian,  
Adams County, Colorado

I hereby certify that this plat is an  
accurate representation of a correct  
survey showing the location of  
1-36 State

  
\_\_\_\_\_  
Licensed Land Surveyor No. 20693  
State of Colorado



20693

Date: March 27, 1991