

Project: Garfield County, CO
 Site: BJU M23A 496 Pad
 Well: BJU M23A FED 15A-23 496
 Wellbore: Wellbore #1
 Design: Design #2
 Latitude: 39.684121
 Longitude: -108.140198
 Ground Level: 8104.0
 RKB @ 8134.0usft (30')

PROJECT DETAILS: Garfield County, CO

Geodetic System: Universal Transverse Mercator (US Survey Feet)
 Datum: NAD 1927 - Western US
 Ellipsoid: Clarke 1866
 Zone: Zone 12N (114 W to 108 W)
 System Datum: Mean Sea Level

REFERENCE INFORMATION

Vertical (TVD) Reference: RKB @ 8134.0usft (30')
 Section (VS) Reference: Slot - 15A-23(0.0N, 0.0E)
 Measured Depth Reference: RKB @ 8134.0usft (30')
 Calculation Method: Minimum Curvature

FORMATION TOP DETAILS

TVDPath	MDPath	Formation
3343.0	3343.0	Wasatch
5743.0	5753.5	Wasatch G
6043.0	6056.4	Fort Union
8057.0	8081.6	Ohio Creek
8057.0	8081.6	TOG
8414.0	8438.7	William Fork
11288.0	11313.5	Cameo
11788.0	11813.6	Rollins

SECTION DETAILS

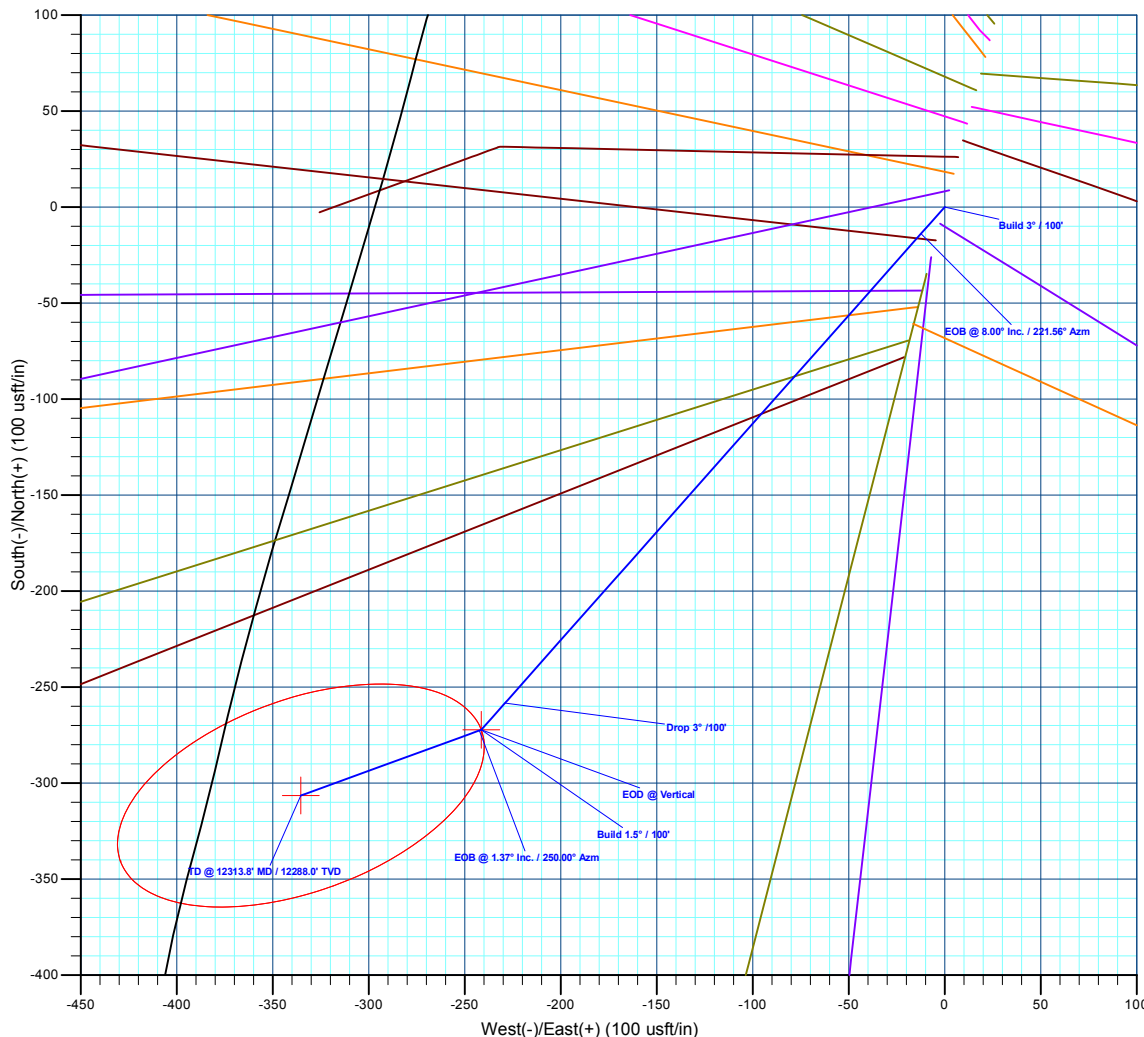
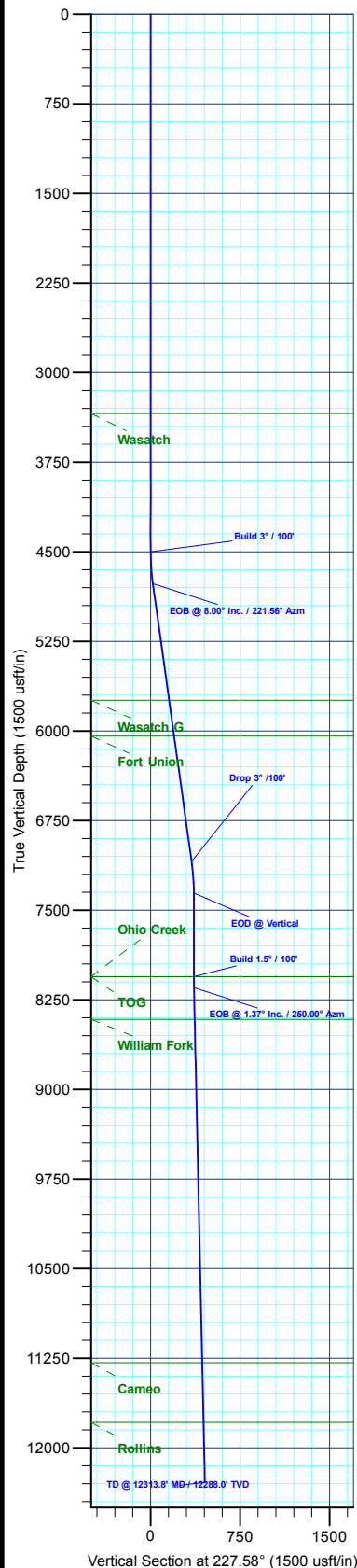
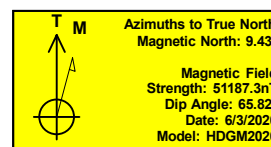
MD	Inc	Azi	TVD	+N/-S	+E/-W	Diep	TFace	VSect	Annotation
0.0	0.00	0.00	0.0	0.0	0.0	0.00	0.00	0.0	
4500.0	0.00	0.00	4500.0	0.0	0.0	0.00	0.00	0.0	Build 3° / 100'
4766.6	8.00	221.56	4765.7	-13.9	-12.3	3.00	221.56	18.5	EOB @ 8.00° Inc. / 221.56° Azm
7115.0	8.00	221.56	7091.3	-258.4	-229.1	0.00	0.00	343.4	Drop 3° / 100'
7381.6	0.00	0.00	7357.0	-272.3	-241.4	3.00	180.00	361.8	EOD @ Vertical
8081.6	0.00	0.00	8057.0	-272.3	-241.4	0.00	0.00	361.8	Build 1.5° / 100'
8172.8	1.37	250.00	8148.2	-272.6	-242.4	1.50	250.00	362.9	EOB @ 1.37° Inc. / 250.00° Azm
12313.8	1.37	250.00	12288.0	-306.5	-335.3	0.00	0.00	454.3	TD @ 12313.8' MD / 12288.0' TVD

DESIGN TARGET DETAILS

Name	TVD	+N/-S	+E/-W	Northing	Easting	Latitude	Longitude
OHCR - 15A-23	8057.0	-272.3	-241.4	14423574.48	2444835.83	39.683374	-108.141055
PBHL - 15A-23	12288.0	-306.5	-335.3	14423537.30	2444743.00	39.683280	-108.141389

WELL DETAILS: BJU M23A FED 15A-23 496

+N/-S	+E/-W	Ground Level : 8104.0	Northing	Easting	Latitude	Longitude
0.0	0.0		14423854.30	2445068.40	39.684121	-108.140198



Plan: Design #2 (BJU M23A FED 15A-23 496/Wellbore #1)

Created By: Will Jircik

Date: 14:59, July 18 2022



Caerus Oil & Gas

Garfield County, CO

BJU M23A 496 Pad

BJU M23A FED 15A-23 496 - Slot 15A-23

Wellbore #1

Plan: Design #2

KLX Well Planning Report

18 July, 2022



Database:	EDM 5000.1 Single User Db	Local Co-ordinate Reference:	Well BJU M23A FED 15A-23 496 - Slot 15A-23
Company:	Caerus Oil & Gas	TVD Reference:	RKB @ 8134.0usft (30')
Project:	Garfield County, CO	MD Reference:	RKB @ 8134.0usft (30')
Site:	BJU M23A 496 Pad	North Reference:	True
Well:	BJU M23A FED 15A-23 496	Survey Calculation Method:	Minimum Curvature
Wellbore:	Wellbore #1		
Design:	Design #2		

Project	Garfield County, CO		
Map System:	Universal Transverse Mercator (US Survey Fee	System Datum:	Mean Sea Level
Geo Datum:	NAD 1927 - Western US		
Map Zone:	Zone 12N (114 W to 108 W)		

Site	BJU M23A 496 Pad		
Site Position:		Northing:	14,424,028.50 usft
From:	Map	Easting:	2,445,109.60 usft
Position Uncertainty:	0.0 usft	Slot Radius:	13-3/16 "
		Latitude:	39.684596
		Longitude:	-108.140032
		Grid Convergence:	1.83 °

Well	BJU M23A FED 15A-23 496 - Slot 15A-23		
Well Position	+N/-S	-172.8 usft	Northing: 14,423,854.30 usft
	+E/-W	-46.7 usft	Easting: 2,445,068.40 usft
Position Uncertainty	0.0 usft	Wellhead Elevation:	Latitude: 39.684122
			Longitude: -108.140198
			Ground Level: 8,104.0 usft

Wellbore	Wellbore #1				
Magnetics	Model Name	Sample Date	Declination (°)	Dip Angle (°)	Field Strength (nT)
	HDGM2020	6/3/2020	9.43	65.82	51,187.30000000

Design	Design #2				
Audit Notes:					
Version:	Phase:	PLAN	Tie On Depth:	0.0	
Vertical Section:	Depth From (TVD) (usft)	+N/-S (usft)	+E/-W (usft)	Direction (°)	
	0.0	0.0	0.0	227.58	

Plan Sections										
Measured Depth (usft)	Inclination (°)	Azimuth (°)	Vertical Depth (usft)	+N/-S (usft)	+E/-W (usft)	Dogleg Rate (°/100usft)	Build Rate (°/100usft)	Turn Rate (°/100usft)	TFO (°)	Target
0.0	0.00	0.00	0.0	0.0	0.0	0.00	0.00	0.00	0.00	
4,500.0	0.00	0.00	4,500.0	0.0	0.0	0.00	0.00	0.00	0.00	
4,766.6	8.00	221.56	4,765.7	-13.9	-12.3	3.00	3.00	0.00	221.56	
7,115.0	8.00	221.56	7,091.3	-258.4	-229.1	0.00	0.00	0.00	0.00	
7,381.6	0.00	0.00	7,357.0	-272.3	-241.4	3.00	-3.00	0.00	180.00	
8,081.6	0.00	0.00	8,057.0	-272.3	-241.4	0.00	0.00	0.00	0.00	OHCR - 15A-23
8,172.8	1.37	250.00	8,148.2	-272.6	-242.4	1.50	1.50	-120.55	250.00	
12,313.8	1.37	250.00	12,288.0	-306.5	-335.3	0.00	0.00	0.00	0.00	PBHL - 15A-23

Database:	EDM 5000.1 Single User Db	Local Co-ordinate Reference:	Well BJU M23A FED 15A-23 496 - Slot 15A-23
Company:	Caerus Oil & Gas	TVD Reference:	RKB @ 8134.0usft (30')
Project:	Garfield County, CO	MD Reference:	RKB @ 8134.0usft (30')
Site:	BJU M23A 496 Pad	North Reference:	True
Well:	BJU M23A FED 15A-23 496	Survey Calculation Method:	Minimum Curvature
Wellbore:	Wellbore #1		
Design:	Design #2		

Planned Survey									
Measured Depth (usft)	Inclination (°)	Azimuth (°)	Vertical Depth (usft)	+N/-S (usft)	+E/-W (usft)	Vertical Section (usft)	Dogleg Rate (°/100usft)	Build Rate (°/100usft)	Turn Rate (°/100usft)
0.0	0.00	0.00	0.0	0.0	0.0	0.0	0.00	0.00	0.00
100.0	0.00	0.00	100.0	0.0	0.0	0.0	0.00	0.00	0.00
200.0	0.00	0.00	200.0	0.0	0.0	0.0	0.00	0.00	0.00
300.0	0.00	0.00	300.0	0.0	0.0	0.0	0.00	0.00	0.00
400.0	0.00	0.00	400.0	0.0	0.0	0.0	0.00	0.00	0.00
500.0	0.00	0.00	500.0	0.0	0.0	0.0	0.00	0.00	0.00
600.0	0.00	0.00	600.0	0.0	0.0	0.0	0.00	0.00	0.00
700.0	0.00	0.00	700.0	0.0	0.0	0.0	0.00	0.00	0.00
800.0	0.00	0.00	800.0	0.0	0.0	0.0	0.00	0.00	0.00
900.0	0.00	0.00	900.0	0.0	0.0	0.0	0.00	0.00	0.00
1,000.0	0.00	0.00	1,000.0	0.0	0.0	0.0	0.00	0.00	0.00
1,100.0	0.00	0.00	1,100.0	0.0	0.0	0.0	0.00	0.00	0.00
1,200.0	0.00	0.00	1,200.0	0.0	0.0	0.0	0.00	0.00	0.00
1,300.0	0.00	0.00	1,300.0	0.0	0.0	0.0	0.00	0.00	0.00
1,400.0	0.00	0.00	1,400.0	0.0	0.0	0.0	0.00	0.00	0.00
1,500.0	0.00	0.00	1,500.0	0.0	0.0	0.0	0.00	0.00	0.00
1,600.0	0.00	0.00	1,600.0	0.0	0.0	0.0	0.00	0.00	0.00
1,700.0	0.00	0.00	1,700.0	0.0	0.0	0.0	0.00	0.00	0.00
1,800.0	0.00	0.00	1,800.0	0.0	0.0	0.0	0.00	0.00	0.00
1,900.0	0.00	0.00	1,900.0	0.0	0.0	0.0	0.00	0.00	0.00
2,000.0	0.00	0.00	2,000.0	0.0	0.0	0.0	0.00	0.00	0.00
2,100.0	0.00	0.00	2,100.0	0.0	0.0	0.0	0.00	0.00	0.00
2,200.0	0.00	0.00	2,200.0	0.0	0.0	0.0	0.00	0.00	0.00
2,300.0	0.00	0.00	2,300.0	0.0	0.0	0.0	0.00	0.00	0.00
2,400.0	0.00	0.00	2,400.0	0.0	0.0	0.0	0.00	0.00	0.00
2,500.0	0.00	0.00	2,500.0	0.0	0.0	0.0	0.00	0.00	0.00
2,600.0	0.00	0.00	2,600.0	0.0	0.0	0.0	0.00	0.00	0.00
2,700.0	0.00	0.00	2,700.0	0.0	0.0	0.0	0.00	0.00	0.00
2,800.0	0.00	0.00	2,800.0	0.0	0.0	0.0	0.00	0.00	0.00
2,900.0	0.00	0.00	2,900.0	0.0	0.0	0.0	0.00	0.00	0.00
3,000.0	0.00	0.00	3,000.0	0.0	0.0	0.0	0.00	0.00	0.00
3,100.0	0.00	0.00	3,100.0	0.0	0.0	0.0	0.00	0.00	0.00
3,200.0	0.00	0.00	3,200.0	0.0	0.0	0.0	0.00	0.00	0.00
3,300.0	0.00	0.00	3,300.0	0.0	0.0	0.0	0.00	0.00	0.00
Wasatch									
3,343.0	0.00	0.00	3,343.0	0.0	0.0	0.0	0.00	0.00	0.00
3,400.0	0.00	0.00	3,400.0	0.0	0.0	0.0	0.00	0.00	0.00
3,500.0	0.00	0.00	3,500.0	0.0	0.0	0.0	0.00	0.00	0.00
3,600.0	0.00	0.00	3,600.0	0.0	0.0	0.0	0.00	0.00	0.00
3,700.0	0.00	0.00	3,700.0	0.0	0.0	0.0	0.00	0.00	0.00
3,800.0	0.00	0.00	3,800.0	0.0	0.0	0.0	0.00	0.00	0.00
3,900.0	0.00	0.00	3,900.0	0.0	0.0	0.0	0.00	0.00	0.00
4,000.0	0.00	0.00	4,000.0	0.0	0.0	0.0	0.00	0.00	0.00
4,100.0	0.00	0.00	4,100.0	0.0	0.0	0.0	0.00	0.00	0.00
4,200.0	0.00	0.00	4,200.0	0.0	0.0	0.0	0.00	0.00	0.00
4,300.0	0.00	0.00	4,300.0	0.0	0.0	0.0	0.00	0.00	0.00
4,400.0	0.00	0.00	4,400.0	0.0	0.0	0.0	0.00	0.00	0.00
Build 3° / 100'									
4,500.0	0.00	0.00	4,500.0	0.0	0.0	0.0	0.00	0.00	0.00
4,600.0	3.00	221.56	4,600.0	-2.0	-1.7	2.6	3.00	3.00	0.00
4,700.0	6.00	221.56	4,699.6	-7.8	-6.9	10.4	3.00	3.00	0.00
EOB @ 8.00° Inc. / 221.56° Azm									
4,766.6	8.00	221.56	4,765.7	-13.9	-12.3	18.5	3.00	3.00	0.00

Database:	EDM 5000.1 Single User Db	Local Co-ordinate Reference:	Well BJU M23A FED 15A-23 496 - Slot 15A-23
Company:	Caerus Oil & Gas	TVD Reference:	RKB @ 8134.0usft (30')
Project:	Garfield County, CO	MD Reference:	RKB @ 8134.0usft (30')
Site:	BJU M23A 496 Pad	North Reference:	True
Well:	BJU M23A FED 15A-23 496	Survey Calculation Method:	Minimum Curvature
Wellbore:	Wellbore #1		
Design:	Design #2		

Planned Survey

Measured Depth (usft)	Inclination (°)	Azimuth (°)	Vertical Depth (usft)	+N/-S (usft)	+E/-W (usft)	Vertical Section (usft)	Dogleg Rate (°/100usft)	Build Rate (°/100usft)	Turn Rate (°/100usft)
4,800.0	8.00	221.56	4,798.8	-17.4	-15.4	23.1	0.00	0.00	0.00
4,900.0	8.00	221.56	4,897.8	-27.8	-24.6	36.9	0.00	0.00	0.00
5,000.0	8.00	221.56	4,996.9	-38.2	-33.9	50.8	0.00	0.00	0.00
5,100.0	8.00	221.56	5,095.9	-48.6	-43.1	64.6	0.00	0.00	0.00
5,200.0	8.00	221.56	5,194.9	-59.0	-52.3	78.4	0.00	0.00	0.00
5,300.0	8.00	221.56	5,293.9	-69.4	-61.6	92.3	0.00	0.00	0.00
5,400.0	8.00	221.56	5,393.0	-79.8	-70.8	106.1	0.00	0.00	0.00
5,500.0	8.00	221.56	5,492.0	-90.2	-80.0	119.9	0.00	0.00	0.00
5,600.0	8.00	221.56	5,591.0	-100.7	-89.2	133.8	0.00	0.00	0.00
5,700.0	8.00	221.56	5,690.1	-111.1	-98.5	147.6	0.00	0.00	0.00
Wasatch G									
5,753.5	8.00	221.56	5,743.0	-116.6	-103.4	155.0	0.00	0.00	0.00
5,800.0	8.00	221.56	5,789.1	-121.5	-107.7	161.4	0.00	0.00	0.00
5,900.0	8.00	221.56	5,888.1	-131.9	-116.9	175.3	0.00	0.00	0.00
6,000.0	8.00	221.56	5,987.1	-142.3	-126.2	189.1	0.00	0.00	0.00
Fort Union									
6,056.4	8.00	221.56	6,043.0	-148.2	-131.4	196.9	0.00	0.00	0.00
6,100.0	8.00	221.56	6,086.2	-152.7	-135.4	203.0	0.00	0.00	0.00
6,200.0	8.00	221.56	6,185.2	-163.1	-144.6	216.8	0.00	0.00	0.00
6,300.0	8.00	221.56	6,284.2	-173.5	-153.8	230.6	0.00	0.00	0.00
6,400.0	8.00	221.56	6,383.3	-183.9	-163.1	244.5	0.00	0.00	0.00
6,500.0	8.00	221.56	6,482.3	-194.3	-172.3	258.3	0.00	0.00	0.00
6,600.0	8.00	221.56	6,581.3	-204.8	-181.5	272.1	0.00	0.00	0.00
6,700.0	8.00	221.56	6,680.3	-215.2	-190.8	286.0	0.00	0.00	0.00
6,800.0	8.00	221.56	6,779.4	-225.6	-200.0	299.8	0.00	0.00	0.00
6,900.0	8.00	221.56	6,878.4	-236.0	-209.2	313.6	0.00	0.00	0.00
7,000.0	8.00	221.56	6,977.4	-246.4	-218.4	327.5	0.00	0.00	0.00
7,100.0	8.00	221.56	7,076.4	-256.8	-227.7	341.3	0.00	0.00	0.00
Drop 3° /100'									
7,115.0	8.00	221.56	7,091.3	-258.4	-229.1	343.4	0.00	0.00	0.00
7,200.0	5.45	221.56	7,175.7	-265.8	-235.7	353.3	3.00	-3.00	0.00
7,300.0	2.45	221.56	7,275.5	-271.0	-240.2	360.1	3.00	-3.00	0.00
EOD @ Vertical									
7,381.6	0.00	0.00	7,357.0	-272.3	-241.4	361.8	3.00	-3.00	0.00
7,400.0	0.00	0.00	7,375.4	-272.3	-241.4	361.8	0.00	0.00	0.00
7,500.0	0.00	0.00	7,475.4	-272.3	-241.4	361.8	0.00	0.00	0.00
7,600.0	0.00	0.00	7,575.4	-272.3	-241.4	361.8	0.00	0.00	0.00
7,700.0	0.00	0.00	7,675.4	-272.3	-241.4	361.8	0.00	0.00	0.00
7,800.0	0.00	0.00	7,775.4	-272.3	-241.4	361.8	0.00	0.00	0.00
7,900.0	0.00	0.00	7,875.4	-272.3	-241.4	361.8	0.00	0.00	0.00
8,000.0	0.00	0.00	7,975.4	-272.3	-241.4	361.8	0.00	0.00	0.00
Build 1.5° / 100' - Ohio Creek - TOG									
8,081.6	0.00	0.00	8,057.0	-272.3	-241.4	361.8	0.00	0.00	0.00
8,100.0	0.28	250.00	8,075.4	-272.3	-241.4	361.9	1.50	1.50	0.00
EOB @ 1.37° Inc. / 250.00° Azm									
8,172.8	1.37	250.00	8,148.2	-272.6	-242.4	362.9	1.50	1.50	0.00
8,200.0	1.37	250.00	8,175.4	-272.9	-243.0	363.5	0.00	0.00	0.00
8,300.0	1.37	250.00	8,275.4	-273.7	-245.3	365.7	0.00	0.00	0.00
8,400.0	1.37	250.00	8,375.4	-274.5	-247.5	367.9	0.00	0.00	0.00
William Fork									
8,438.6	1.37	250.00	8,414.0	-274.8	-248.4	368.7	0.00	0.00	0.00
8,500.0	1.37	250.00	8,475.3	-275.3	-249.7	370.1	0.00	0.00	0.00

Database:	EDM 5000.1 Single User Db	Local Co-ordinate Reference:	Well BJU M23A FED 15A-23 496 - Slot 15A-23
Company:	Caerus Oil & Gas	TVD Reference:	RKB @ 8134.0usft (30')
Project:	Garfield County, CO	MD Reference:	RKB @ 8134.0usft (30')
Site:	BJU M23A 496 Pad	North Reference:	True
Well:	BJU M23A FED 15A-23 496	Survey Calculation Method:	Minimum Curvature
Wellbore:	Wellbore #1		
Design:	Design #2		

Planned Survey									
Measured Depth (usft)	Inclination (°)	Azimuth (°)	Vertical Depth (usft)	+N/-S (usft)	+E/-W (usft)	Vertical Section (usft)	Dogleg Rate (°/100usft)	Build Rate (°/100usft)	Turn Rate (°/100usft)
8,600.0	1.37	250.00	8,575.3	-276.1	-252.0	372.3	0.00	0.00	0.00
8,700.0	1.37	250.00	8,675.3	-276.9	-254.2	374.5	0.00	0.00	0.00
8,800.0	1.37	250.00	8,775.2	-277.8	-256.5	376.7	0.00	0.00	0.00
8,900.0	1.37	250.00	8,875.2	-278.6	-258.7	378.9	0.00	0.00	0.00
9,000.0	1.37	250.00	8,975.2	-279.4	-261.0	381.1	0.00	0.00	0.00
9,100.0	1.37	250.00	9,075.2	-280.2	-263.2	383.3	0.00	0.00	0.00
9,200.0	1.37	250.00	9,175.1	-281.0	-265.5	385.5	0.00	0.00	0.00
9,300.0	1.37	250.00	9,275.1	-281.8	-267.7	387.7	0.00	0.00	0.00
9,400.0	1.37	250.00	9,375.1	-282.7	-269.9	389.9	0.00	0.00	0.00
9,500.0	1.37	250.00	9,475.0	-283.5	-272.2	392.2	0.00	0.00	0.00
9,600.0	1.37	250.00	9,575.0	-284.3	-274.4	394.4	0.00	0.00	0.00
9,700.0	1.37	250.00	9,675.0	-285.1	-276.7	396.6	0.00	0.00	0.00
9,800.0	1.37	250.00	9,775.0	-285.9	-278.9	398.8	0.00	0.00	0.00
9,900.0	1.37	250.00	9,874.9	-286.7	-281.2	401.0	0.00	0.00	0.00
10,000.0	1.37	250.00	9,974.9	-287.6	-283.4	403.2	0.00	0.00	0.00
10,100.0	1.37	250.00	10,074.9	-288.4	-285.7	405.4	0.00	0.00	0.00
10,200.0	1.37	250.00	10,174.8	-289.2	-287.9	407.6	0.00	0.00	0.00
10,300.0	1.37	250.00	10,274.8	-290.0	-290.1	409.8	0.00	0.00	0.00
10,400.0	1.37	250.00	10,374.8	-290.8	-292.4	412.0	0.00	0.00	0.00
10,500.0	1.37	250.00	10,474.8	-291.6	-294.6	414.2	0.00	0.00	0.00
10,600.0	1.37	250.00	10,574.7	-292.5	-296.9	416.4	0.00	0.00	0.00
10,700.0	1.37	250.00	10,674.7	-293.3	-299.1	418.7	0.00	0.00	0.00
10,800.0	1.37	250.00	10,774.7	-294.1	-301.4	420.9	0.00	0.00	0.00
10,900.0	1.37	250.00	10,874.6	-294.9	-303.6	423.1	0.00	0.00	0.00
11,000.0	1.37	250.00	10,974.6	-295.7	-305.9	425.3	0.00	0.00	0.00
11,100.0	1.37	250.00	11,074.6	-296.5	-308.1	427.5	0.00	0.00	0.00
11,200.0	1.37	250.00	11,174.6	-297.4	-310.3	429.7	0.00	0.00	0.00
11,300.0	1.37	250.00	11,274.5	-298.2	-312.6	431.9	0.00	0.00	0.00
Cameo									
11,313.5	1.37	250.00	11,288.0	-298.3	-312.9	432.2	0.00	0.00	0.00
11,400.0	1.37	250.00	11,374.5	-299.0	-314.8	434.1	0.00	0.00	0.00
11,500.0	1.37	250.00	11,474.5	-299.8	-317.1	436.3	0.00	0.00	0.00
11,600.0	1.37	250.00	11,574.4	-300.6	-319.3	438.5	0.00	0.00	0.00
11,700.0	1.37	250.00	11,674.4	-301.4	-321.6	440.7	0.00	0.00	0.00
11,800.0	1.37	250.00	11,774.4	-302.3	-323.8	442.9	0.00	0.00	0.00
Rollins									
11,813.6	1.37	250.00	11,788.0	-302.4	-324.1	443.2	0.00	0.00	0.00
11,900.0	1.37	250.00	11,874.4	-303.1	-326.1	445.1	0.00	0.00	0.00
12,000.0	1.37	250.00	11,974.3	-303.9	-328.3	447.4	0.00	0.00	0.00
12,100.0	1.37	250.00	12,074.3	-304.7	-330.5	449.6	0.00	0.00	0.00
12,200.0	1.37	250.00	12,174.3	-305.5	-332.8	451.8	0.00	0.00	0.00
12,300.0	1.37	250.00	12,274.2	-306.4	-335.0	454.0	0.00	0.00	0.00
TD @ 12313.8' MD / 12288.0' TVD									
12,313.8	1.37	250.00	12,288.0	-306.5	-335.3	454.3	0.00	0.00	0.00

Database:	EDM 5000.1 Single User Db	Local Co-ordinate Reference:	Well BJU M23A FED 15A-23 496 - Slot 15A-23
Company:	Caerus Oil & Gas	TVD Reference:	RKB @ 8134.0usft (30')
Project:	Garfield County, CO	MD Reference:	RKB @ 8134.0usft (30')
Site:	BJU M23A 496 Pad	North Reference:	True
Well:	BJU M23A FED 15A-23 496	Survey Calculation Method:	Minimum Curvature
Wellbore:	Wellbore #1		
Design:	Design #2		

Design Targets

Target Name - hit/miss target - Shape	Dip Angle (°)	Dip Dir. (°)	TVD (usft)	+N/-S (usft)	+E/-W (usft)	Northing (usft)	Easting (usft)	Latitude	Longitude
OHCR - 15A-23 - plan hits target center - Point	0.00	0.00	8,057.0	-272.3	-241.4	14,423,574.48	2,444,835.83	39.683374	-108.141055
PBHL - 15A-23 - plan hits target center - Ellipse (radii L100.0 W50.0 on 250.00 azi)	0.00	0.00	12,288.0	-306.5	-335.3	14,423,537.30	2,444,743.00	39.683280	-108.141389

Formations

Measured Depth (usft)	Vertical Depth (usft)	Name	Lithology	Dip (°)	Dip Direction (°)
3,343.0	3,343.0	Wasatch			
5,753.5	5,743.0	Wasatch G			
6,056.4	6,043.0	Fort Union			
8,081.6	8,057.0	Ohio Creek			
8,081.6	8,057.0	TOG			
8,438.6	8,414.0	William Fork			
11,313.5	11,288.0	Cameo			
11,813.6	11,788.0	Rollins			

Plan Annotations

Measured Depth (usft)	Vertical Depth (usft)	Local Coordinates		Comment
		+N/-S (usft)	+E/-W (usft)	
4,500.0	4,500.0	0.0	0.0	Build 3° / 100'
4,766.6	4,765.7	-13.9	-12.3	EOB @ 8.00° Inc. / 221.56° Azm
7,115.0	7,091.3	-258.4	-229.1	Drop 3° / 100'
7,381.6	7,357.0	-272.3	-241.4	EOD @ Vertical
8,081.6	8,057.0	-272.3	-241.4	Build 1.5° / 100'
8,172.8	8,148.2	-272.6	-242.4	EOB @ 1.37° Inc. / 250.00° Azm
12,313.8	12,288.0	-306.5	-335.3	TD @ 12313.8' MD / 12288.0' TVD