



Downhole Well Profile

Well Name: **DRAGON TRAIL UN 1072**

API/UWI 05103094310000	Surface Legal Location SWNE-S20-T2S-R102W-6PM	Field Name Dragon Trail	License #	State/Province CO	Well Configuration Type Vertical
Original KB Elevation (ft) 6,794	KB-Tubing Head Distance (ft) 10	Spud Date 8/28/1990 00:00	Rig Release Date 8/31/1990 00:00	PBTD (All) (ftKB) Original Hole - 3,026.0	Total Depth All (TVD) (ftKB) Original Hole - 3,111.0

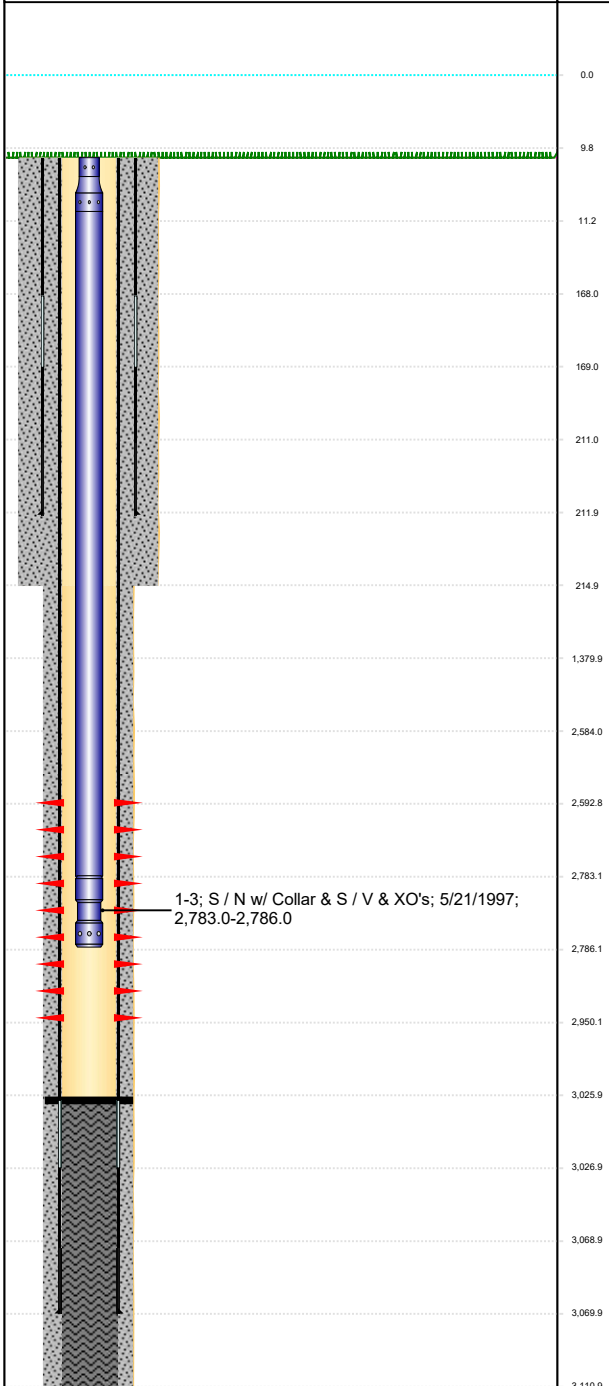
Type

Des	Make	Model	WP (psi)	Service	WP Top (psi)	Bore Min (in)

Vertical - Original Hole, 2/25/2022 10:40:54 AM

Vertical schematic (actual)

MD
(ftKB)



Casing Strings

Csg Des	OD (in)	Wt/Len (lb/ft)	Grade	Top Thread	Set Depth (ftKB)
Surface	8 5/8	24.00	J-55	ST&C	212.0
Production	5 1/2	15.50	J-55	LT&C	3,070.0

Perforations

Date	Top (ftKB)	Btm (ftKB)	Linked Zone
9/5/1990	2593	2950	Mancos B, Original Hole

Tubing Strings

Tubing Description	Run Date	String Length (ft)	Set Depth (ftKB)				
Tubing - Production	5/21/1997	2,776.00	2,786.0				
Item Des	Jts	Make	Model	OD (in)	Wt (lb/ft)	Grade	Len (ft)
10rd x 8rd XO w/ Collar	1			2 3/8			1
Tubing	91			2 3/8	4.70		2772
S / N w/ Collar & S / V & XO's	1			2 3/8			3

Rod Strings

Rod Description		Run Date		String Length (ft)		Set Depth (ftKB)		
Item Des		Jts	Make	Model	OD (in)	Wt (lb/ft)	Grade	Len (ft)