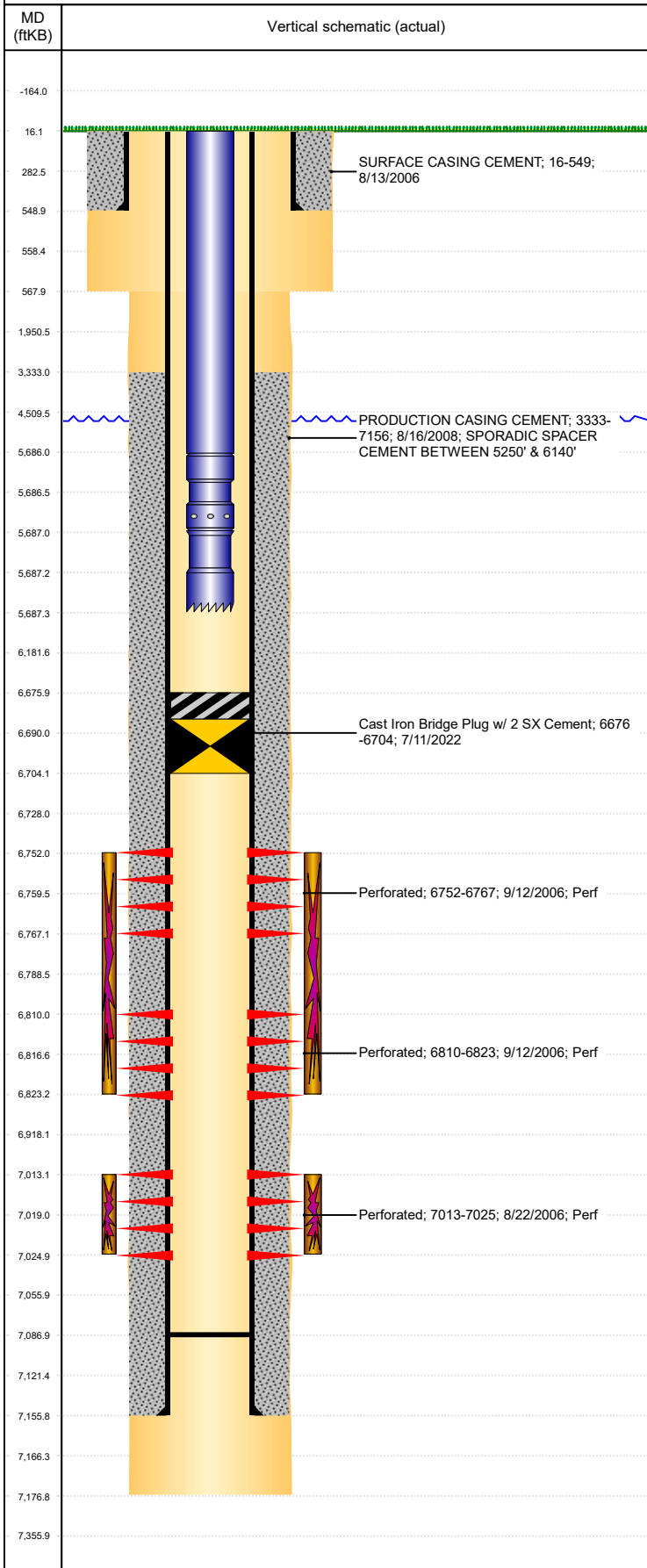




P&A Wellbore For State

Well Name: LINDSAY C33-18

Land, Original Hole, 8/8/2022 2:35:25 PM



Well Header

Surface UWI 0512323888	Business Unit Rockies	Gov Auth Dist	Prod Tree Loc Land
Orig. KB to Gnd (ft) 16.00	Original Spud Date 8/12/2006	Abandon Date	Well Sub-Status TA
High... N			

Comment

D/O & PUSHED CIPF TO 7149' - 4/07.

Surface Location (Congressional)

Qtr 3 SW	Qtr 4 NE	Section 33	Twnshp 4	Twnsh... N	Range 64	Rng E... W	Latitude (°) 40.27095602	Longitude (°) -104.553547134
-------------	-------------	---------------	-------------	---------------	-------------	---------------	-----------------------------	---------------------------------

Wellbore Sections

Section Des	Hole Size (in)	Act Top (ftKB)	Act Btm (ftKB)
SURFACE	12 1/4	16.0	568.0
PRODUCTION	7 7/8	568.0	7,177.0

Casing Strings

Csg Des	Run Date	OD (in)	Wt/Len (lb/ft)	Grade	Top Depth (MD) (ftKB)	Set Depth (MD) (ftKB)
Surface	8/13/2006	8 5/8	24.00	J-55	16	549
Production Casing	8/16/2006	4 1/2	11.60	M-80	16	7156

Cement

Des	Start Date	Top (ftKB)	Btm (ftKB)
SURFACE CASING CEMENT	8/13/2006	16.0	549.0
PRODUCTION CASING CEMENT	8/16/2008	3,333.0	7,156.0

Zone Statuses

Zone Name	Status Date	Status	Fluid Type	Job	Prod Method
NIOBRARA	6/22/2009	PR	Water		Flowing
NIOBRARA	7/11/2022	Closed	Water		
CODELL	5/9/2017	SI			
CODELL	7/11/2022	Closed			

Perforation Data

Linked Zone	Explosive Type	Entered Shot Total	Top (ftKB)	Btm (ftKB)	Date
NIOBRARA, Original Hole		90	6,752.0	6,767.0	9/12/2006
NIOBRARA, Original Hole		78	6,810.0	6,823.0	9/12/2006
CODELL, Original Hole		48	7,013.0	7,025.0	8/22/2006

Stimulation Intervals

Zone	Start Date	Top (ftKB)	Btm (ftKB)
NIOBRARA, Original Hole	9/12/2006	6,752.0	6,823.0
CODELL, Original Hole	9/12/2006	7,013.0	7,025.0
CODELL, Original Hole	8/19/2009	7,013.0	7,025.0

Other In Hole

Run Date	Des	Make	OD (in)	Top (ftKB)	Btm (ftKB)
7/11/2022	Cast Iron Bridge Plug w/ 2 SX Cement		4	6,676.0	6,704.0

Logs

Date	Type	Depth Top (MD) (ftKB)	Btm (ftKB)
8/16/2006	COMPENSATED DENSITY	3,000	7,157.0
8/16/2006	DUAL INDUCTION	549	7,177.0
8/22/2006	CBL/CCL/GR	3,174	7,177.0

Plug Back Total Depths

Date	Type	Com	PBTD (ftKB)
8/20/2009	FILL		7,020
8/21/2009	FIILL	62' OF RAT HOLE	7,087