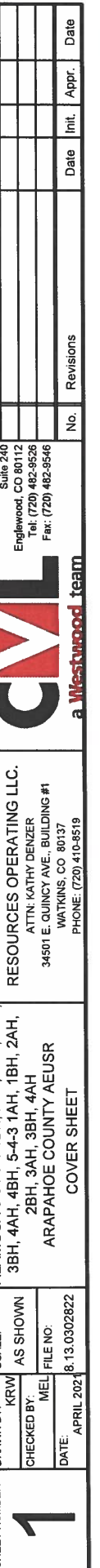


SECTIONS 5 & 6, TOWNSHIP 5 SOUTH, RANGE 64 WEST OF THE SIXTH PRINCIPAL MERIDIAN, COUNTY OF ARAPAHOE, STATE OF COLORADO
LATITUDE: 39°39'01.58"N, LONGITUDE: 104°35'09.66"W



ALAMOSA 5-64 6-1 1BH, 2AH, 2BH, 3AH, 3BH, 4AH, 4BH, 5-4-3 1AH, 1BH, 2AH, 2BH, 3AH, 3BH, 4AH OIL & GAS WELL
ADMINISTRATIVE ENERGY USE BY SPECIAL REVIEW PLAN

SECTIONS 5 & 6, TOWNSHIP 5 SOUTH, RANGE 64 WEST OF THE SIXTH PRINCIPAL MERIDIAN, COUNTY OF ARAPAHOE, STATE OF COLORADO

LATITUDE: 39°39'01.58"N, LONGITUDE: 104°35'09.66"W

STANDARD NOTES:

THE OWNER(S), DEVELOPER(S) AND/OR SUBDIVIDER(S) OF THE ADMINISTRATIVE ENERGY USE BY SPECIAL REVIEW PLAN KNOWN AS ALAMOSA 5-64 6-1 1BH, 2AH, 2BH, 3AH, 3BH, 4AH, 4BH, 5-4-3 1AH, 1BH, 2AH, 2BH, 3AH, 3BH, 4AH, THEIR RESPECTIVE SUCCESSORS, HEIRS AND/OR ASSIGNS AGREE TO THE FOLLOWING NOTES.

STREET MAINTENANCE:

1. IT IS MUTUALLY UNDERSTOOD AND AGREED THAT THE EXISTING ROADWAYS USED TO ACCESS THE SITE, AS SHOWN ON THIS PLAN, WILL NOT BE MAINTAINED BY THE COUNTY. THE OWNERS, DEVELOPERS AND/OR SUBDIVIDERS, THEIR SUCCESSORS AND/OR ASSIGNS IN INTEREST, SHALL BE RESPONSIBLE FOR STREET MAINTENANCE.
2. EXISTING ROADS USED TO ACCESS THE SITE LOCATION SHALL BE IMPROVED OR MAINTAINED IN A CONDITION THE SAME AS OR BETTER THAN BEFORE OPERATIONS BEGAN. THE APPLICANT SHALL SCHEDULE AN ONSITE MEETING WITH THE COUNTY INSPECTOR PRIOR TO CONSTRUCTION.
3. ACCESS TO COUNTY ROADS WILL BE APPROVED VIA A COUNTY ACCESS PERMIT AND OVERSIZE VEHICLE PERMIT.
4. THE APPLICANT IS RESPONSIBLE TO MAINTAIN ALL PUBLIC ROADWAYS AND REPAIR ANY DAMAGE RESULTING FROM APPLICANT'S TRUCK TRAFFIC DURING CONSTRUCTION, DRILLING AND COMPLETION OF THE OIL & GAS WELL.
5. THE APPLICANT AND/OR OPERATOR ARE RESPONSIBLE FOR DUST CONTROL FOR THE PAD AND ANY ROADWAYS USED DURING THE CONSTRUCTION.

DRAINAGE MAINTENANCE:

THE OPERATOR SHALL BE RESPONSIBLE FOR MAINTENANCE OF ALL DRAINAGE FACILITIES INSTALLED. REQUIREMENTS INCLUDE, BUT ARE NOT LIMITED TO MAINTAINING THE SPECIFIED STORM WATER DETENTION/RETENTION VOLUMES, MAINTAINING OUTLET STRUCTURES, FLOW RESTRICTION DEVICES AND FACILITIES NEEDED TO CONVEY FLOW TO SAID BASINS.

SIGHT TRIANGLE MAINTENANCE:

THE OWNERS OF PRIVATE PROPERTY CONTAINING A TRAFFIC SIGHT TRIANGLE ARE PROHIBITED FROM ERECTING OR GROWING ANY OBSTRUCTIONS OVER THREE FEET IN HEIGHT ABOVE THE ELEVATION OF THE LOWEST POINT ON THE CROWN OF THE ADJACENT ROADWAY WITHIN SAID TRIANGLE.

EMERGENCY ACCESS:

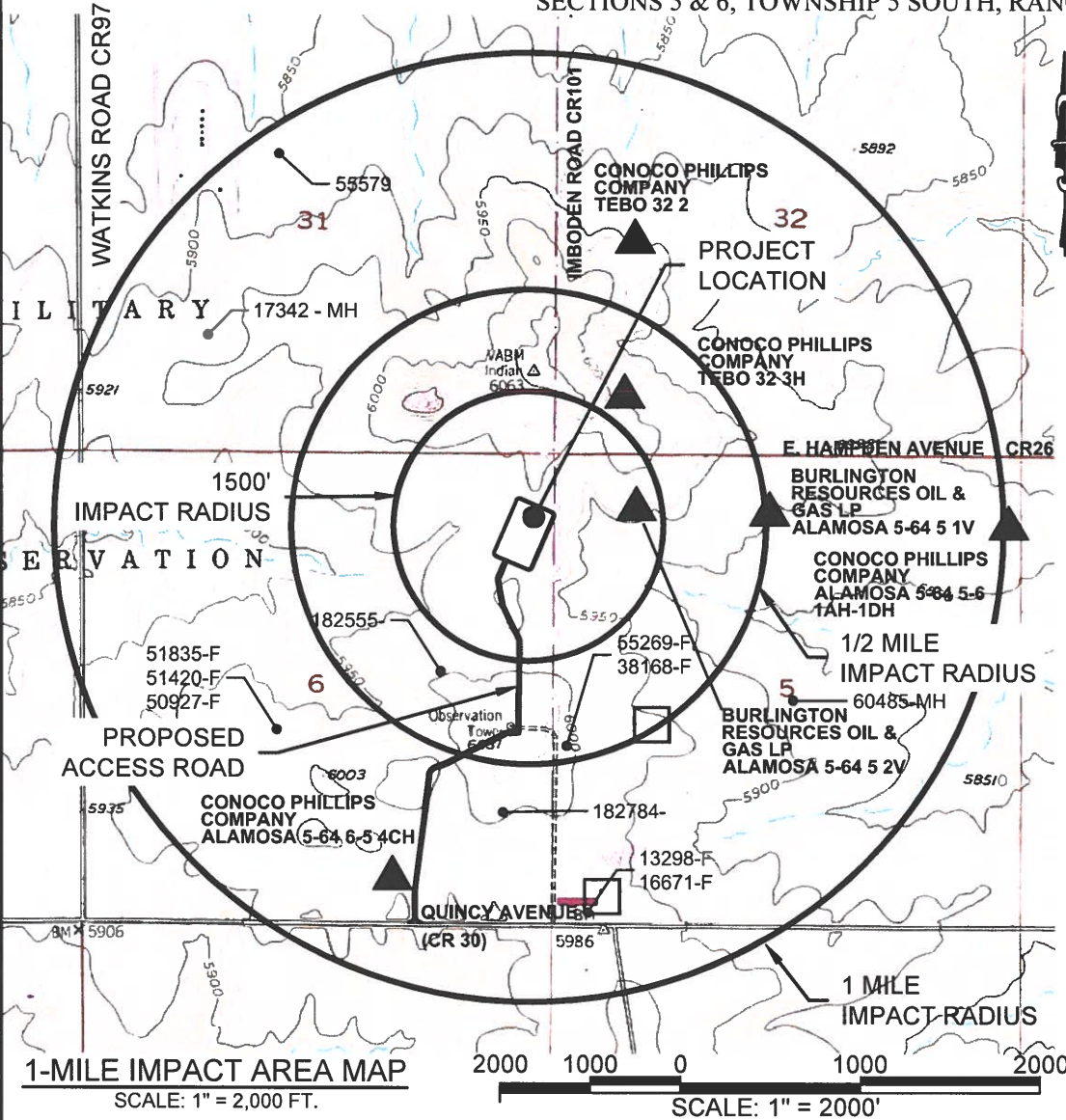
EMERGENCY ACCESS IS GRANTED HEREWITH OVER AND ACROSS ALL AREAS FOR POLICE, FIRE AND EMERGENCY VEHICLES.





PRIVATE STREET MAINTENANCE:

IT IS MUTUALLY UNDERSTOOD AND AGREED THAT THE PRIVATE ROADWAYS SHOWN ON THIS PLAN ARE NOT IN CONFORMANCE WITH ARAPAHOE COUNTY INFRASTRUCTURE DESIGN AND CONSTRUCTION STANDARDS AND WILL NOT BE MAINTAINED BY THE COUNTY. THE OWNERS, DEVELOPERS AND/OR SUBDIVIDERS, THEIR SUCCESSORS AND/OR ASSIGNS IN INTEREST, SHALL BE RESPONSIBLE FOR STREET MAINTENANCE.

DRAINAGE LIABILITY:

IT IS THE POLICY OF ARAPAHOE COUNTY THAT IT DOES NOT AND WILL NOT ASSUME LIABILITY FOR THE DRAINAGE FACILITIES DESIGNED AND/OR CERTIFIED BY CVL CONSULTANTS OF COLORADO, INC. ARAPAHOE COUNTY REVIEWS DRAINAGE PLANS PURSUANT TO COLORADO REVISED STATUTES TITLE 30, ARTICLE 28, BUT CANNOT, ON BEHALF OF CRESTONE PEAK RESOURCES OPERATING LLC, GUARANTEE THAT FINAL DRAINAGE DESIGN REVIEW WILL ABSOLVE THE CRESTONE PEAK RESOURCES OPERATING LLC, AND/OR THEIR SUCCESSORS AND/OR ASSIGNS OF FUTURE LIABILITY FOR IMPROPER DESIGN. IT IS THE POLICY OF ARAPAHOE COUNTY THAT APPROVAL OF THE FINAL DEVELOPMENT PLAN DOES NOT IMPLY APPROVAL OF CVL CONSULTANTS OF COLORADO, INC. DRAINAGE DESIGN.




LEGEND	
	PROPOSED OIL AND GAS WELL SITE
	PERMITTED OIL AND GAS WELL SITE PER COGCC GIS ONLINE FEBRUARY 2021
 146163	PERMITTED WATER WELL PER DWR MARCH 2021
	OCCUPIED STRUCTURE / RESIDENCE

PERMITTED WATER WELL PER DWR																
Priority / Status	Receipt	Permit	Permit Status	Contact Name	County	Twn	Rng	Sec	Q40	Q160	Latitude	Longitude	Aquifer(s)	Use(s)	Distance to Facility	TD
1 - Water source will be sampled pending landowner permission	319804	38168-F	Well Constructed	Apogee Kazmira, LLC 34501 E Quincy Ave Bldg 65C Watkins, CO 80137-8933	ARAPAHOE	5S	64W	5	SW	NW	39.643706	-104.584576	ARAPAHOE	Commercial, Stock	2000	1685
1 Alt - Downgradient water source will be sampled pending landowner permission if no other water sources are identified within the 1/2 mile radius of a new oil and gas facility.	36176	51835-F	Well Constructed	ORICA ARAPAHOE	ARAPAHOE	5S	64W	6	SW	NE	39.644305	-104.595971	ARAPAHOE	Municipal	3108	1662
Eliminated – Permit Status	34638	50927-F	Permit Canceled*	STATE BOARD OF LAND COMMISSIONERS	ARAPAHOE	5S	64W	6	SW	NE	39.644305	-104.595971	UPPER ARAPAHOE	Municipal	3108	n/a
Eliminated – Permit Status	35683	51420-F	Permit Expired*	STATE BOARD OF LAND COMMISSIONERS	ARAPAHOE	5S	64W	6	SW	NE	39.644305	-104.595971	UPPER ARAPAHOE	Commercial, Irrigation	3108	n/a
Eliminated – Permit Status	55579		Application Information Requested*	COLORADO STATE BOARD OF LAND COMMISSIONERS	ARAPAHOE	4S	64W	31	NW	SE	39.661892	-104.595799	DENVER	Stock	n/a	n/a
Eliminated – Permit Status	60485	60485-MH	Permit Issued*	EXPEDITION WATER SOLUTIONS	ARAPAHOE	5S	64W	5	NE	SW	39.645112	-104.575552	QUATERNARY ALLUVIUM	Monitoring / Sampling	3287	n/a
Eliminated – Permit Status	0374697A	182784-	Permit Issued*	UNIVERSITY OF DENVER	ARAPAHOE	5S	64W	6	SE	NE	39.64175	-104.587035	ALL UNNAMED	Commercial	2714	n/a
Eliminated – Permit Status	0374697B	182555-	Permit Issued*	UNIVERSITY OF DENVER	ARAPAHOE	5S	64W	6	NE	SE	39.646057	-104.58948	ALL UNNAMED	Other	1445	n/a
Eliminated – Permit Status	470412	55269-F	Permit Issued*	AUTOLIV, INFLATORS	ARAPAHOE	5S	64W	5	SW	NW	39.643706	-104.584576	LARAMIE FOX HILLS	Commercial, Industrial	2000	n/a
Eliminated – Upgradient	9006041	13298-F	Well Constructed	ORDNANCE ENGINEERING ASSOCI	ARAPAHOE	5S	64W	5	SW	SW	39.638621	-104.583837	ALL UNNAMED	Industrial	3864	506
Eliminated – Upgradient	9006236	16671-F	Well Constructed	OEA INC	ARAPAHOE	5S	64W	5	SW	SW	39.638621	-104.583651	ALL UNNAMED	Commercial	3864	1300
Eliminated – Use	17342	17342-MH	Permit Issued*	WASTE MANAGEMENT OF CO	ARAPAHOE	4S	64W	31	SW	NW	39.656317	-104.598762	ALL UNNAMED	Monitoring / Sampling	3939	n/a

ARAPAHOE COUNTY CASE NUMBER: AE20-002

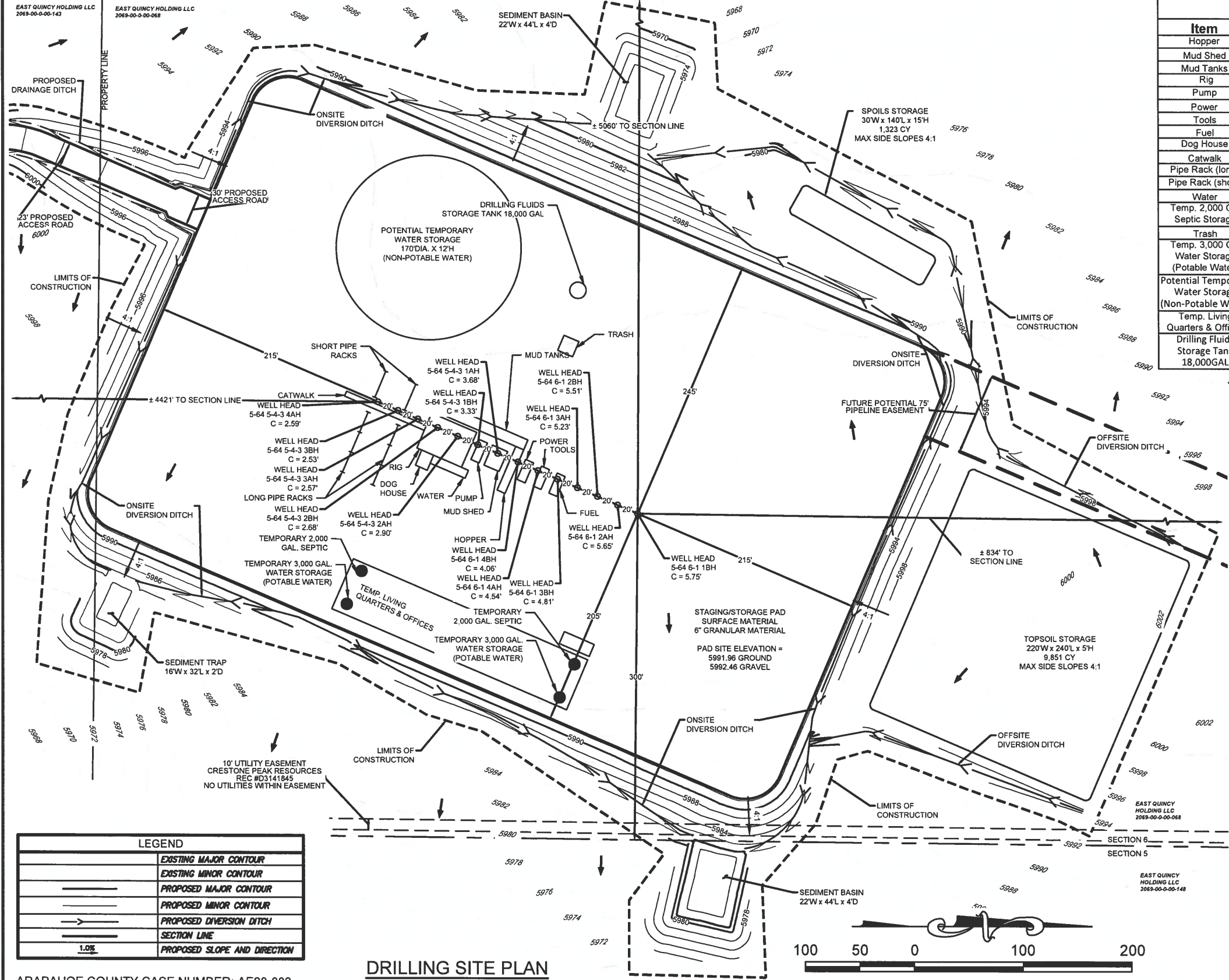
SPILL PREVENTION, CONTROL & COUNTERMEASURE PLAN (SPCC):

IN COORDINATION WITH PROFESSIONAL ENVIRONMENTAL ENGINEERS AND PROFESSIONAL FACILITY ENGINEERS, CRESTONE PEAK RESOURCES OPERATING LLC. HAS DEVELOPED AND DESIGNED PRO-ACTIVE SYSTEMS, FLUID TRANSFER PROCESSES, AND DOCUMENTATION MEASURES TO LIMIT THE POTENTIAL OF AN ACCIDENTAL DISCHARGE. THE APPLICANT HAS DEVELOPED AN SPCC PLAN TO ADDRESS THE PROCEDURES RELATIVE TO EMERGENCY RESPONSES TO SPILLS, INCLUDING PREVENTION MEASURES, NOTIFICATION PROTOCOL AND MITIGATION. THE SPCC PLAN SHALL BE KEPT ON THE WELL SITE DURING DRILLING AND COMPLETION OPERATIONS AND ON CRESTONE PEAK RESOURCES OPERATING LLC. INTRANET. OPERATIONS, HEALTH, SAFETY AND ENVIRONMENTAL PERSONNEL ALL KEEP COPIES OF THE SPCC PLAN ON HAND. FROM THE DATE OF INTIAL PRODUCTION, OPERATOR HAS SIX (6) MONTHS TO DEVELOP AN SPCC PLAN. OPERATOR SHALL PROVIDE THE SPCC PLAN TO ARAPAHOE COUNTY WHEN COMPLETED.

SHEET NUMBER <div>2</div>	DRAWN BY:	SCALE:	ALAMOSA 5-64 6-1 1BH, 2AH, 2BH, 3AH, 3BH, 4AH, 4BH, 5-4-3 1AH, 1BH, 2AH, 2BH, 3AH, 3BH, 4AH ARAPAHOE COUNTY AEUR NOTES SHEET & IMPACT AREA	CRESTONE PEAK RESOURCES OPERATING ILLC. ATTN: KATHY DENZER 34501 E. QUINCY AVE., BUILDING #1 WATKINS, CO 80137 PHONE: (720) 410-9519	 a Westwood team	10333 E. Dry Creek Rd. Suite 240 Englewood, CO 80112 Tel: (720) 482-9526 Fax: (720) 482-9546	No.	Revisions	Date	Appr.	Date			
	CHECKED BY:	AS SHOWN					FILE NO:							
	DATE:	MEL					8.13.03022822							
							APRIL 202							

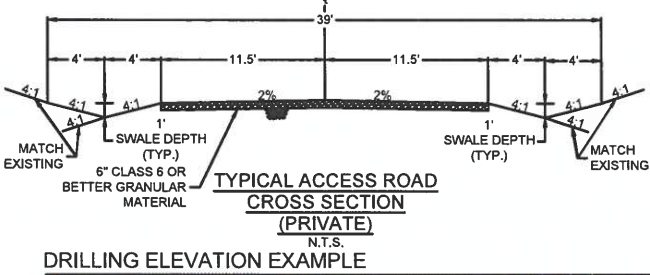
ARAPAHOE COUNTY OIL & GAS OPERATIONS
ALAMOSA 5-64 6-1 1BH, 2AH, 2BH, 3AH, 3BH, 4AH, 4BH, 5-4-3 1AH, 1BH, 2AH, 2BH, 3AH, 3BH, 4AH OIL & GAS WELL
ADMINISTRATIVE ENERGY USE BY SPECIAL REVIEW PLAN

SECTIONS 5 & 6, TOWNSHIP 5 SOUTH, RANGE 64 WEST OF THE SIXTH PRINCIPAL MERIDIAN, COUNTY OF ARAPAHOE, STATE OF COLORADO
LATITUDE: 39°39'01.58"N, LONGITUDE: 104°35'09.66"W

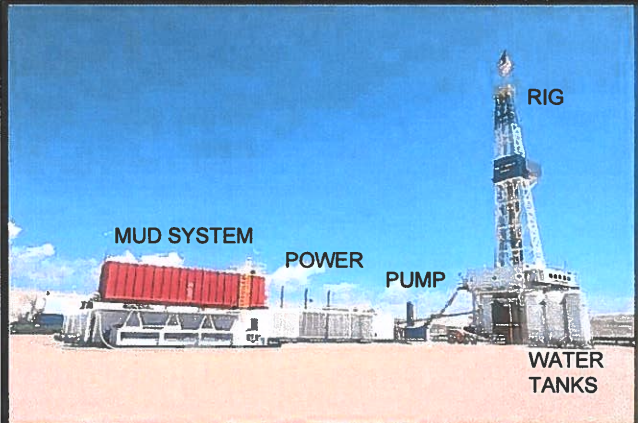


Drilling Equipment Representative Dimension Table					
Item	Qty.	Length (ft.)	Width (ft.)	Height (ft.)	Diameter (ft.)
Hopper	1	51	12	12	-
Mud Shed	1	33	14	11	-
Mud Tanks	1	90	11	11	-
Rig	1	45	35	100	-
Pump	1	33	14	11	-
Power	1	30	11	11	-
Tools	1	30	11	11	-
Fuel	1	30	11	10	-
Dog House	1	29	10	9	-
Catwalk	1	58	9	8	-
Pipe Rack (long)	2	60	-	-	-
Pipe Rack (short)	2	26	-	-	-
Water	1	47	10	11	-
Temp. 2,000 Gal Septic Storage	2	-	-	12	16
Trash	1	15	15	6	-
Temp. 3,000 Gal Water Storage (Potable Water)	2	-	-	12	16
Potential Temporary Water Storage (Non-Potable Water)	1	-	-	12	170
Temp. Living Quarters & Offices	1	350	50	14	-
Drilling Fluids Storage Tank 18,000GAL	1	-	-	12	20

- NOTES:
- 1) DRILLING SITE PLAN LAYOUT IS FOR GRAPHICAL PURPOSES ONLY. ACTUAL SITE PLAN MAY VARY, INCLUDING ACCESS POINTS. COUNTY ENGINEER REVIEW IS REQUIRED PRIOR TO CHANGING ACCESS POINTS.
 - 2) DELIVERY OF NON-POTABLE WATER FOR POTENTIAL STORAGE SHALL BE ACHIEVED WITH TEMPORARY OVERLAND PIPE OR DELIVERY TRUCK. IF WATER IS HAULED, THE PUBLIC WATER SYSTEM IDENTIFICATION NUMBER (PWSID) SHALL BE SUPPLIED TO TRI-COUNTY HEALTH DEPARTMENT (TCHD).
 - 3) SETBACKS FOR ONSITE WASTEWATER TREATMENT SYSTEMS SHALL CONFORM TO TCHD REGULATION NO. O-14. VAULT SYSTEMS SHALL BE PERMITTED AND INSPECTED BY TCHD.
 - 4) REFER TO GESC PLANS FOR RIPRAP DIMENSIONS
 - 5) SEE GESC PLANS FOR TYPICAL DIVERSION CROSS SECTION



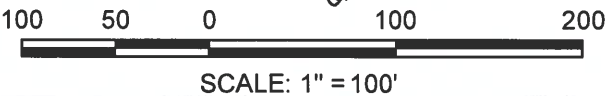
DRILLING ELEVATION EXAMPLE



LEGEND	
	EXISTING MAJOR CONTOUR
	EXISTING MINOR CONTOUR
	PROPOSED MAJOR CONTOUR
	PROPOSED MINOR CONTOUR
	PROPOSED DIVERSION DITCH
	SECTION LINE
	PROPOSED SLOPE AND DIRECTION

ARAPAHOE COUNTY CASE NUMBER: AE20-002

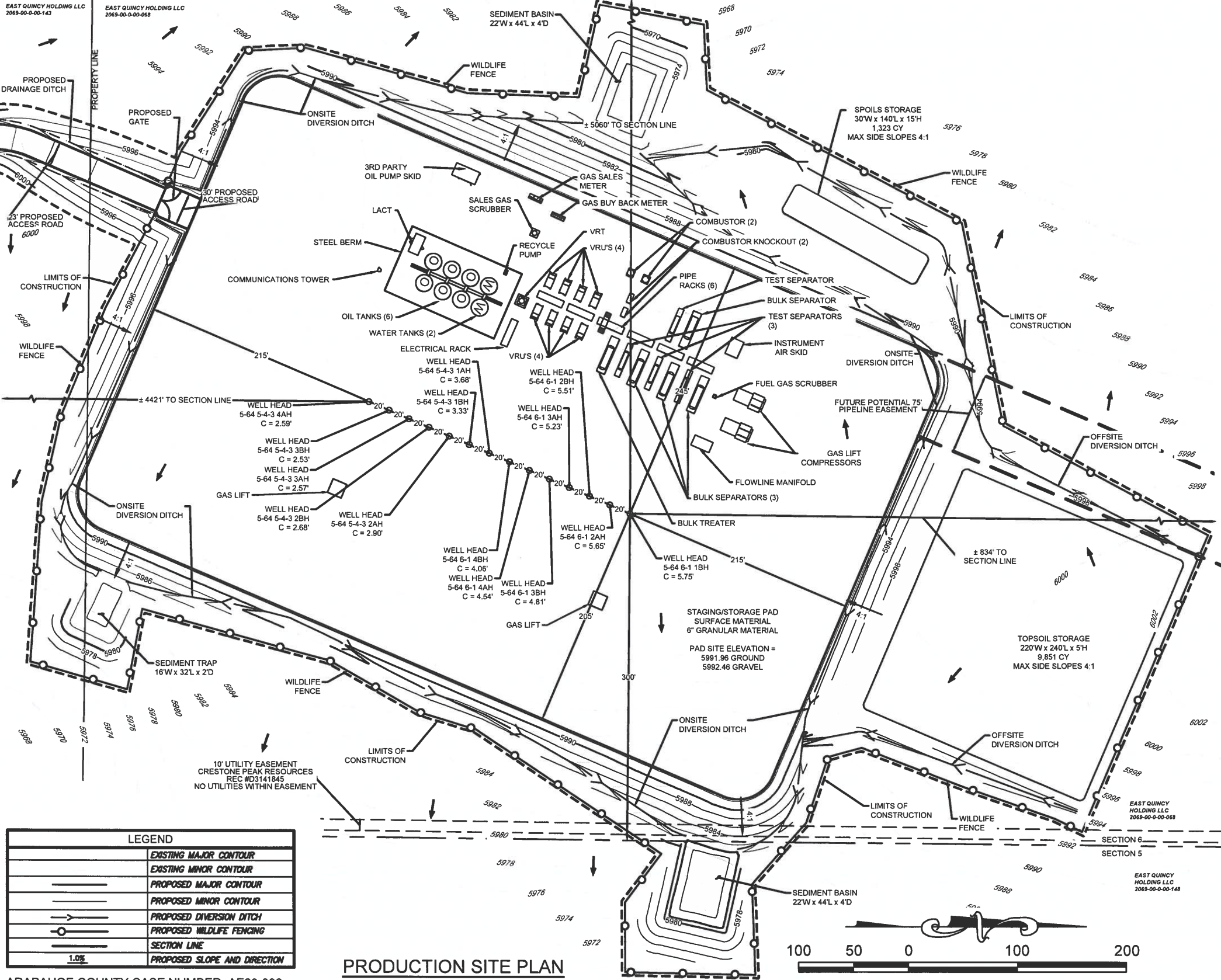
DRILLING SITE PLAN
SCALE: 1" = 100 FT.



10333 E. Dry Creek Rd. Suite 240 Englewood, CO 80112 Tel: (720) 482-5526 Fax: (720) 482-5546	CRESTONE PEAK RESOURCES OPERATING LLC. ATTN: KATHY DENZER 34501 E. QUINCY AVE., BUILDING #1 WATKINS, CO 80137 PHONE: (720) 413-8519	ALAMOSA 5-64 6-1 1BH, 2AH, 2BH, 3AH, 3BH, 4AH, 4BH, 5-4-3 1AH, 1BH, 2AH, 2BH, 3AH, 3BH, 4AH ARAPAHOE COUNTY AELUR DRILLING SITE PLAN	DRAWN BY: KRW CHECKED BY: MEL DATE: APRIL 2023	SCALE: AS SHOWN FILE NO: 13.0302822	SHEET NUMBER 3
--	--	--	--	--	-------------------

ARAPAHOE COUNTY OIL & GAS OPERATIONS
ALAMOSA 5-64 6-1 1BH, 2AH, 2BH, 3AH, 3BH, 4AH, 4BH, 5-4-3 1AH, 1BH, 2AH, 2BH, 3AH, 3BH, 4AH OIL & GAS WELL
ADMINISTRATIVE ENERGY USE BY SPECIAL REVIEW PLAN

SECTIONS 5 & 6, TOWNSHIP 5 SOUTH, RANGE 64 WEST OF THE SIXTH PRINCIPAL MERIDIAN, COUNTY OF ARAPAHOE, STATE OF COLORADO
LATITUDE: 39°39'01.58"N, LONGITUDE: 104°35'09.66"W



LEGEND	
	EXISTING MAJOR CONTOUR
	EXISTING MINOR CONTOUR
	PROPOSED MAJOR CONTOUR
	PROPOSED MINOR CONTOUR
	PROPOSED DIVERSION DITCH
	PROPOSED WILDLIFE FENCING
	SECTION LINE
	PROPOSED SLOPE AND DIRECTION

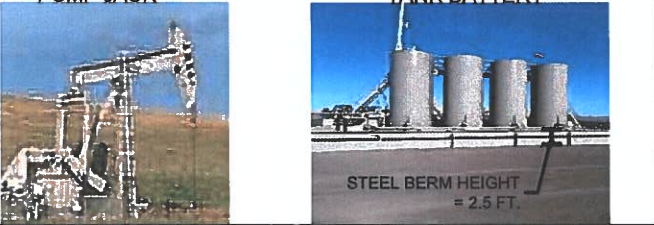
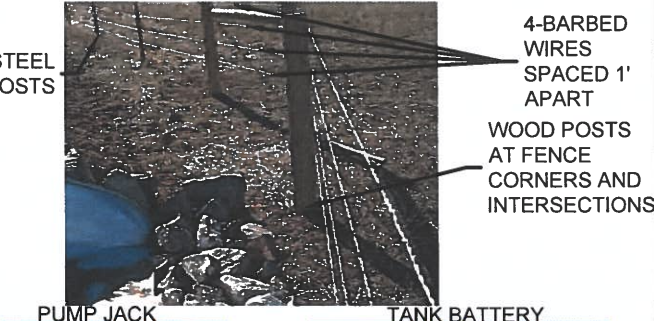
ARAPAHOE COUNTY CASE NUMBER: AE20-002

PRODUCTION SITE PLAN
SCALE: 1" = 100 FT.

PRODUCTION EQUIPMENT REPRESENTATIVE DIMENSION TABLE				
EQUIPMENT	QUANTITY	LENGTH (FT)	WIDTH (FT)	HEIGHT (FT)
FLOWLINE MANIFOLD	1	25	4	8
COMMUNICATIONS TOWER	1	4	2.5	35
BULK TREATER	1	35	8	15
TEST SEPARATORS	4	32	12	18
STEEL BERM	1	350	0.25	2.5
GAS SALES METER	1	15	17	9
GAS BUY BACK METER (INCLUDES STRUCTURE)	1	15	7	9
GAS LIFT COMPRESSOR	2	39	29	21
COMBUSTOR KNOCKOUT (INCLUDES STRUCTURE)	2	13	4	10
COMBUSTOR	2	8	8	35
INSTRUMENT AIR SKID	1	22	10	12
ELECTRICAL RACK	1	25	4	6
3RD PARTY OIL PUMP SKID	1	10	5	6
PIPE RACK	6	25	6	3
VAPOR RECOVERY UNIT - VRU (INCLUDES STRUCTURE)	8	15	7	8
VRT	1	4	4	37
500 BBL LOW PROFILE OIL TANK	6	16	16	16
500 BBL LOW PROFILE WATER TANK	2	16	16	16
RECYCLE PUMP	1	3	2	5
LACT (INCLUDES STRUCTURE)	1	18	11	11
GAS LIFT	2	13	13	9
SALES GAS SCRUBBER	1	4	4	10
BULK SEPARATOR	4	35	8	15
FUEL GAS SCRUBBER	1	9.5	9	6

NOTE: DIMENSIONS ON EQUIPMENT ARE SUBJECT TO CHANGE, BUT WILL FIT WITHIN THE FACILITY AREA.

- NOTE:
- 1) PRODUCTION SITE PLAN LAYOUT IS FOR GRAPHICAL PURPOSES ONLY. ACTUAL SITE PLAN MAY VARY, INCLUDING ACCESS POINTS. COUNTY ENGINEER REVIEW IS REQUIRED PRIOR TO CHANGING ACCESS POINTS.
 - 2) PERMANENT PRODUCTION SURFACE EQUIPMENT WILL BE PAINTED EARTH TONES AS REQUIRED BY COGCC.
 - 3) REFER TO GESC FOR SEEDING SPECIFICATIONS.
 - 4) REFER TO GESC PLANS FOR TYPICAL DIVERSION DITCH CROSS SECTION.



10333 E. Dry Creek Rd.
Suite 240
Englewood, CO 80112
Tel: (720) 482-9526
Fax: (720) 482-9546

CML
a Westwood team

CRESTONE PEAK
RESOURCES OPERATING LLC.
ATTN: KATHY DENZER
34501 E. QUINCY AVE., BUILDING #1
WATKINS, CO 80137
PHONE: (720) 410-8519

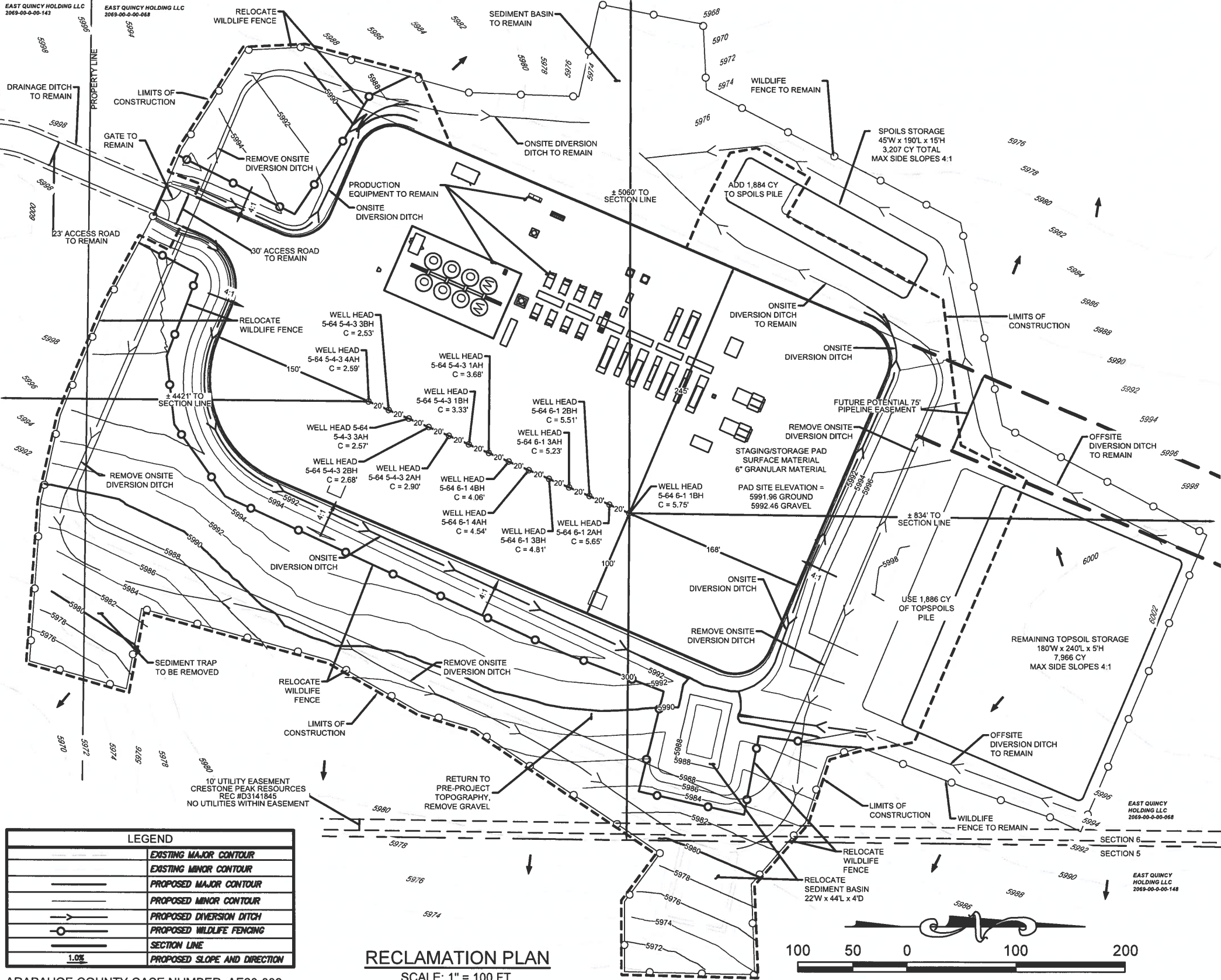
ALAMOSA 5-64 6-1 1BH, 2AH, 2BH, 3AH,
3BH, 4AH, 4BH, 5-4-3 1AH, 1BH, 2AH,
2BH, 3AH, 3BH, 4AH
ARAPAHOE COUNTY AEUR
PRODUCTION SITE PLAN

SCALE:
AS SHOWN
DRAWN BY: KRW
CHECKED BY: MEL
FILE NO: 8.13.0302822
DATE: APRIL 2024

Revisions
Date
Appr.
Date

ARAPAHOE COUNTY OIL & GAS OPERATIONS
ALAMOSA 5-64 6-1 1BH, 2AH, 2BH, 3AH, 3BH, 4AH, 4BH, 5-4-3 1AH, 1BH, 2AH, 2BH, 3AH, 3BH, 4AH OIL & GAS WELL
ADMINISTRATIVE ENERGY USE BY SPECIAL REVIEW PLAN

SECTIONS 5 & 6, TOWNSHIP 5 SOUTH, RANGE 64 WEST OF THE SIXTH PRINCIPAL MERIDIAN, COUNTY OF ARAPAHOE, STATE OF COLORADO
LATITUDE: 39°39'01.58"N, LONGITUDE: 104°35'09.66"W



LEGEND	
	EXISTING MAJOR CONTOUR
	EXISTING MINOR CONTOUR
	PROPOSED MAJOR CONTOUR
	PROPOSED MINOR CONTOUR
	PROPOSED DIVERSION DITCH
	PROPOSED WILDLIFE FENCING
	SECTION LINE
	PROPOSED SLOPE AND DIRECTION

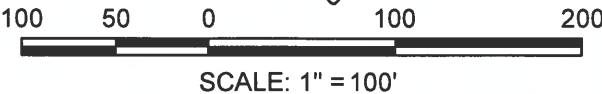


4' STEEL T-POSTS

4-BARBED
WIRES
SPACED 1'
APART
WOOD POSTS
AT FENCE
CORNERS AND
INTERSECTIONS

WILDLIFE FENCE ELEVATION

RECLAMATION PLAN
SCALE: 1" = 100 FT.



ARAPAHOE COUNTY CASE NUMBER: AE20-002

SHEET NUMBER 5	DRAWN BY: KRW CHECKED BY: MEL DATE: APRIL 2021	SCALE: AS SHOWN FILE NO: 8.13.0302822	ALAMOSA 5-64 6-1 1BH, 2AH, 2BH, 3AH, 3BH, 4AH, 4BH, 5-4-3 1AH, 1BH, 2AH, 2BH, 3AH, 3BH, 4AH OIL & GAS WELL ARAPAHOE COUNTY AEURS RECLAMATION PLAN		CRESTONE PEAK RESOURCES OPERATING ILLC. ATTN: KATHY DENZER 34501 E. QUINCY AVE., BUILDING #1 WATKINS, CO 80137 PHONE: (720) 410-8519	 a Westwood team	10333 E. Dry Creek Rd. Suite 240 Englewood, CO 80112 Tel: (720) 482-9526 Fax: (720) 482-9546	Revisions	No.	Date	Init.	Appr.	Date

ARAPAHOE COUNTY OIL & GAS OPERATIONS
ALAMOSA 5-64 6-1 1BH, 2AH, 2BH, 3AH, 3BH, 4AH, 4BH, 5-4-3 1AH, 1BH, 2AH, 2BH, 3AH, 3BH, 4AH OIL & GAS WELL
ADMINISTRATIVE ENERGY USE BY SPECIAL REVIEW PLAN

SECTIONS 5 & 6, TOWNSHIP 5 SOUTH, RANGE 64 WEST OF THE SIXTH PRINCIPAL MERIDIAN, COUNTY OF ARAPAHOE, STATE OF COLORADO
LATITUDE: 39°39'01.58"N, LONGITUDE: 104°35'09.66"W

GENERAL NOTES:

1. THE SITE PLAN, EQUIPMENT AND INFORMATION SHOWN HEREIN ARE FOR REFERENCE ONLY AND ARE NOT INTENDED TO BE USED FOR CONSTRUCTION. ENGINEERED USE BY SPECIAL REVIEW DRAWINGS RELATIVE TO THIS SITE WILL BE SUBMITTED AND APPROVED FOLLOWING ALL APPLICABLE ARAPAHOE COUNTY STANDARDS AND PROCEDURES.
2. THE DIMENSIONS AND LAYOUT DEPICTED IN THE SITE PLAN SHOWN ARE REPRESENTATIVE OF A TYPICAL WELL SITE. ACTUAL DIMENSIONS AND LAYOUT MAY CHANGE BASED ON THE VARIABILITY OF THE EQUIPMENT.
3. THE PROPOSED DRILL SITE WILL BE APPROXIMATELY 7.1 ACRES IN SIZE AND CONSTRUCTION OF THIS SITE WILL INCLUDE LEVELING THE PAD TO ACCOMMODATE THE DRILLING RIG. ONCE THE PAD IS COMPLETED, DRILLING RIG EQUIPMENT WILL BE BROUGHT ONTO LOCATION AND RIGGED UP. DRILLING OPERATIONS, WHICH RUN 24 HOURS A DAY UNTIL COMPLETED, WILL COMMENCE AFTER THE RIG IS "RIGGED UP". THE SURFACE HOLE WILL BE DRILLED TO APPROXIMATELY 2000 FEET USING FRESH WATER. SURFACE CASING WILL THEN BE RUN AND CEMENTED TO SURFACE TO PROTECT ANY SHALLOW FRESH WATER ZONES. SURFACE CASING SETTING DEPTH IS DETERMINED FROM SUBSURFACE GROUND WATER MAPS PREPARED BY THE STATE ENGINEER AND SUPPLEMENTED BY THE LATEST DATA AVAILABLE FROM OFFSETTING WELLS.
4. THE CRESTONE PEAK RESOURCES OPERATING LLC DRILLING RIGS ARE EQUIPPED WITH A CLOSED LOOP SYSTEM, THEREFORE, WATER USED FOR DRILLING IS RECYCLED AND RE-USED, AND RESERVE PITS WILL NOT BE CONSTRUCTED. THE DRILLING RIG WILL BE ON LOCATION FOR APPROXIMATELY 14 DAYS PER HORIZONTAL WELL. AT THE END OF THE DRILLING PHASE, THE DRILLING RIG WILL BE MOVED OFF LOCATION.
5. THE COMPLETION PHASE BEGINS WHEN THE DRILLING EQUIPMENT IS TRANSPORTED OFF THE LOCATION. COMPLETION OPERATIONS ARE CONDUCTED 24 HOURS PER DAY INTERMITTENTLY OVER A PERIOD OF SEVERAL WEEKS. THE SITE MAY BE BLADED AND LEVELED TO ACCOMMODATE THE COMPLETION RIG AND ANCHORS MAY BE SET FOR THE COMPLETION RIG. ADDITIONAL OPERATIONS INCLUDING CEMENTING, DRILLING AND LOGGING MAY OCCUR AS CIRCUMSTANCES REQUIRE. FOR HORIZONTAL WELLS, MULTIPLE FRACTURE STAGES ARE INDUCED ALONG THE LENGTH OF THE WELLBORE IN THE RESPECTIVE FORMATION INTO WHICH THE WELL HAS BEEN DRILLED.
6. THE PRODUCTION EQUIPMENT FOR THE ALAMOSA 5-64 6-1 1BH, 2AH, 2BH, 3AH, 3BH, 4AH, 4BH, 5-4-3 1AH, 1BH, 2AH, 2BH, 3AH, 3BH, 4AH OIL & GAS WELL WILL BE LOCATED ADJACENT TO THE WELLS. THE EQUIPMENT ON THE ALAMOSA 5-64 6-1 1BH, 2AH, 2BH, 3AH, 3BH, 4AH, 4BH, 5-4-3 1AH, 1BH, 2AH, 2BH, 3AH, 3BH, 4AH OIL & GAS WELL WILL CONSIST OF OIL TANKS, WATER TANKS, SEPARATORS, VRTS, VRUS, ECD, COMPRESSOR, PUMP JACKS,VOC COMBUSTORS, AND PROPOSED ELECTRICAL AND/OR SOLAR EQUIPMENT. ALL QUANTITIES FOR THESE ITEMS CAN BE FOUND ON THE PRODUCTION EQUIPMENT TABLE ON PAGE 4. TANKS AND FACILITIES SHALL BE PAINTED PER COGCC RULES. THE STEEL BERMS AROUND THE TANKS WILL HOLD 150% OF THE CAPACITY OF THE LARGEST TANK WITHIN THE BERM AND WILL BE PAINTED TO MATCH THE TANKS AND OTHER EQUIPMENT. THE STEEL BERMS AROUND THE TANKS WILL BE INSPECTED WEEKLY AND FOLLOWING A PRECIPITATION EVENT.
7. AT THE TIME THE WELLS BECOMES SUB-ECONOMIC TO OPERATE, THE OPERATOR OR ITS SUCCESSORS WILL ENGAGE THE SERVICES OF A PLUGGING RIG TO REMOVE PRODUCTION EQUIPMENT FROM THE WELLBORES AND PLUG THE PRODUCTIVE ZONES WITH A COMBINATION OF BRIDGE PLUGS AND CEMENT PLUGS IN ACCORDANCE WITH RULE 319.A OF THE RULES AND REGULATIONS PROMULGATED BY THE COGCC. IF THE SEPARATORS AND TANKS ON THE SURFACE OF THE LAND ARE NO LONGER NEEDED FOR OTHER WELLS, THEY WILL BE REMOVED. SURFACE RESTORATION WILL INVOLVE REMOVAL OF ANY ABOVE-GROUND CASING AND THE INSTALLATION OF REGULATION MARKERS THAT WILL NOT INTERFERE WITH SUBSEQUENT SURFACE USE.

COGCC STANDARD 210

WELL DIRECTIONAL SIGN ELEVATION EXAMPLE WELL ENTRY SIGN ELEVATION EXAMPLE WELL HEAD SIGN ELEVATION EXAMPLE



ENTRY SIGN TO BE PLACED AT WELL ACCESS ROAD INTERSECTION WITH PUBLIC ROAD.



ENTRY SIGN TO BE PLACED AT ACCESS ROAD ENTRY TO PAD SITE.




ENTRY SIGN TO BE PLACED AT WELL HEAD.

NOTES:

NO OTHER OIL AND GAS FACILITIES, SOLAR FACILITIES, POWER TRANSMISSION LINES, ELECTRIC SUBSTATIONS, NATURAL GAS TRANSMISSION LINES, AND OTHER SIMILAR SUCH ENERGY FACILITY EQUIPMENT OR ENERGY PRODUCTION SITES, BASED ON PUBLICLY AVAILABLE RESOURCES, ARE LOCATED WITHIN THE ONE MILE BUFFER AREA.

NOTES:

1. THE FOLLOWING 24/7 PHONE NUMBER WILL BE INCLUDED ON THE WELL ENTRY SIGN AND WELL HEAD SIGN SHOWN HEREIN: (877) 534-4117.
2. OPERATOR NAME (CRESTONE PEAK RESOURCES) SHALL BE INCLUDED ON SIGN AT ENTRY LOCATION TO WELL PAD
3. WELL SIGNS WILL BE 2'x3' IN SIZE, TYPICALLY CONSTRUCTED OUT OF METAL.

SHEET NUMBER	DRAWN BY: KRW	CHECKED BY: MEL	DATE: APRIL 2021	SCALE: AS SHOWN	FILE NO: 8.13.0302822	ALAMOSA 5-64 6-1 1BH, 2AH, 2BH, 3AH, 3BH, 4AH, 4BH, 5-4-3 1AH, 1BH, 2AH, 2BH, 3AH, 3BH, 4AH OIL & GAS WELL	ARAPAHOE COUNTY AELUR	ADDITIONAL NOTES SHEET	CRESTONE PEAK RESOURCES OPERATING ILLC. ATTN: KATHY DENZER 34501 E. QUINCY AVE., BUILDING #1 WATKINS, CO 80137 PHONE: (720) 410-8519	 a Westwood team	10333 E. Dry Creek Rd. Suite 240 Englewood, CO 80112 Tel: (720) 482-9526 Fax: (720) 482-9546	No.	Revisions	Date	Init.	Appr.	Date