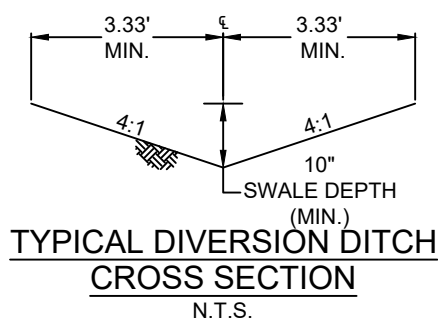
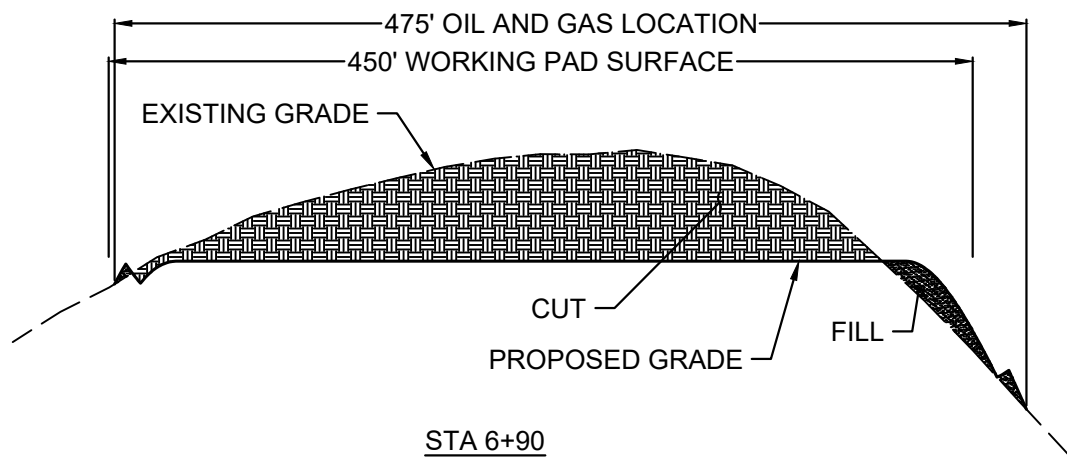
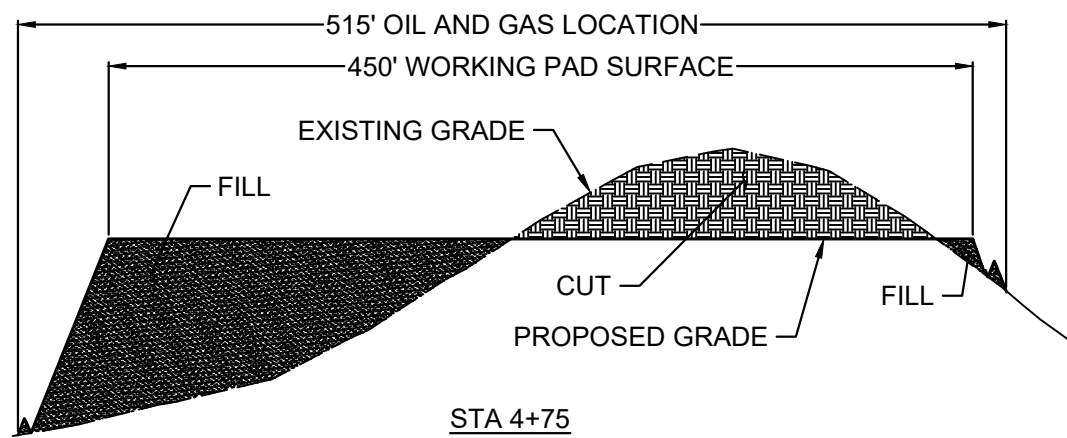
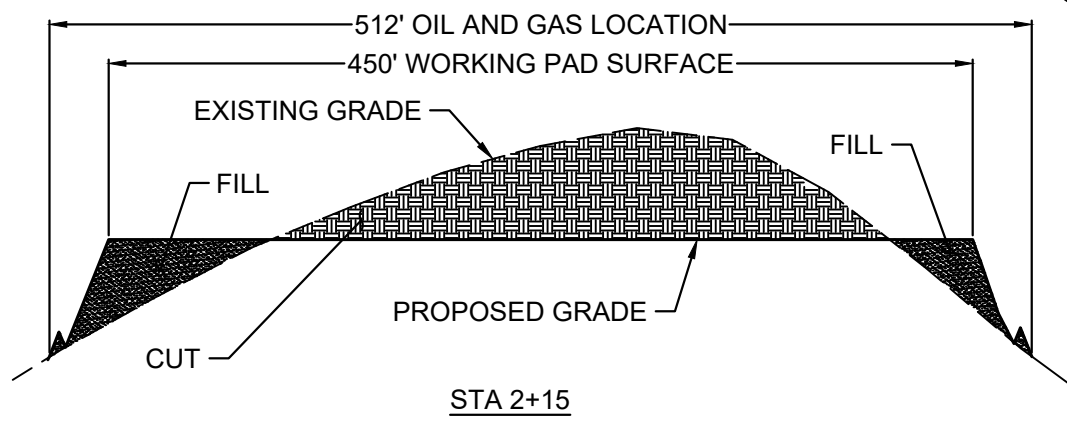
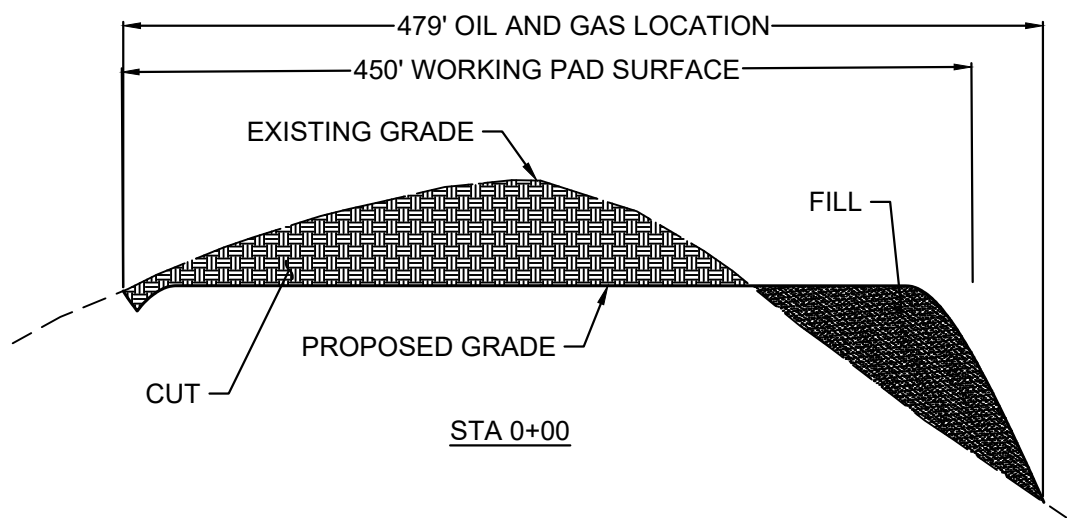


APPROXIMATE SURFACE DISTURBANCE AREAS		
	DISTANCE	ACRES
WORKING PAD SURFACE	N/A	7.1
TOTAL OIL AND GAS LOCATION	N/A	12.56
ACCESS ROAD DISTURBANCE	± 4718'	6.92
TOTAL DISTURBANCE	N/A	19.48

**NOTES:**

- ROUND CORNERS AT 35' RADIUS OR AS NEEDED.
- CONSTRUCT DIVERSION DITCHES AS NEEDED.
- CONTOURS SHOWN AT 2' INTERVALS.
- CUT/FILL SLOPES 4:1 (TYP.).



- NOTES:
- FILL QUANTITY INCLUDES 10% FOR COMPACTION.
  - CALCULATIONS BASED ON 6" TOPSOIL STRIPPING.
  - CUT/FILL SLOPES 4:1 (TYP.).

APPROXIMATE EARTHWORK QUANTITIES	
TOPSOIL STRIPPING (6")	12,531 CU. YD.
WELL PAD CUT	25,471 CU. YD.
ACCESS ROAD CUT	7,428 CU. YD.
SEDIMENT BASIN CUT	152 CU. YD.
TOTAL CUT	33,051 CU. YD.
WELL PAD FILL	23,180 CU. YD.
ACCESS ROAD FILL	2,357 CU. YD.
SEDIMENT BASIN FILL	1,362 CU. YD.
TOTAL FILL	26,899 CU. YD.
EXCESS MATERIAL	6,152 CU. YD.
TOPSOIL	10,441 CU. YD.
EXCESS UNBALANCE	0 CU. YD.
GRAVEL BASE ON PAD (6")	5,730 CU. YD.

CRESTONE PEAK RESOURCES OPERATING LLC  
ALAMOSA 5-64 6-1 1BH, 2AH, 2BH, 3AH, 3BH, 4AH, 4BH, 5-4-3 1AH, 1BH, 2AH, 2BH, 3AH, 3BH, 4AH  
SECTION 6, T5S, R64W, 6TH P.M.  
ARAPAHOE COUNTY, COLORADO

CONSTRUCTION LAYOUT CROSS SECTIONS

DRAWN BY: KMG

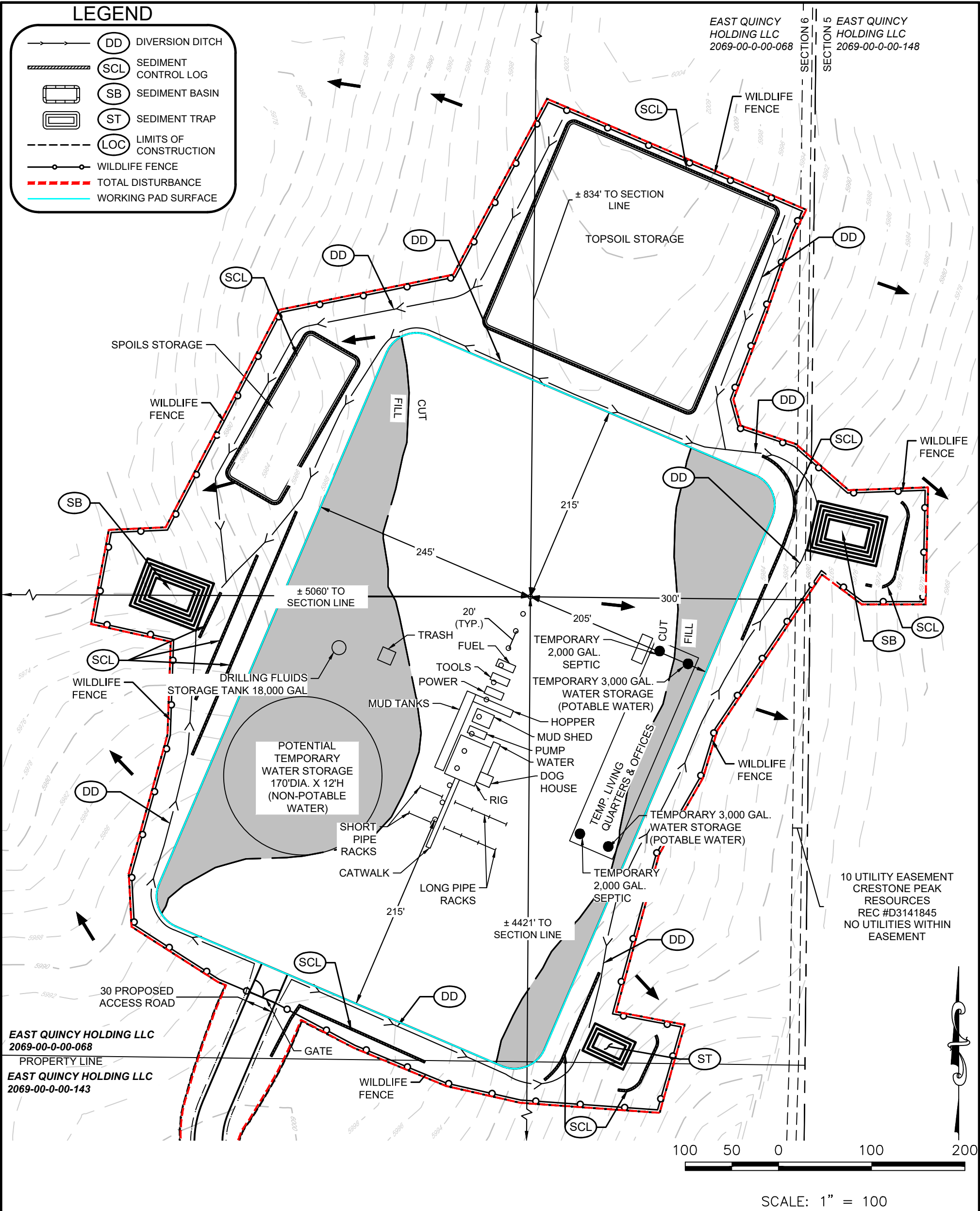
DATE DRAWN: 06-24-21

**Westwood**

10333 E DRY CREEK RD.  
SUITE 240  
ENGLEWOOD , CO 80112  
TEL: 720.482.9526

Westwoodps.com  
Westwood Professional Services, Inc.





FINISHED GRADE ELEVATION = 5991.96'

NOTES:

- CONTOURS SHOWN AT 2' INTERVALS.
- CUT/FILL SLOPES 4:1 (TYP.).

CRESTONE PEAK RESOURCES OPERATING LLC  
ALAMOSA 5-64 6-1 1BH, 2AH, 2BH, 3AH, 3BH, 4AH, 4BH, 5-4-3 1AH, 1BH, 2AH, 2BH, 3AH, 3BH, 4AH  
SECTION 6, T5S, R64W, 6TH P.M.  
ARAPAHOE COUNTY, COLORADO

**PRELIMINARY DRILLING RIG LAYOUT**

DRAWN BY: KMG      DATE DRAWN: 06-24-21

**Westwood**

10333 E DRY CREEK RD.  
SUITE 240  
ENGLEWOOD, CO 80112  
TEL: 720.482.9526

Westwoodps.com  
Westwood Professional Services, Inc.

LEGEND

DD

DIVERSION DITCH

SCL

SEDIMENT CONTROL LOG

SB

SEDIMENT BASIN

ST

SEDIMENT TRAP

LOC

LIMITS OF CONSTRUCTION

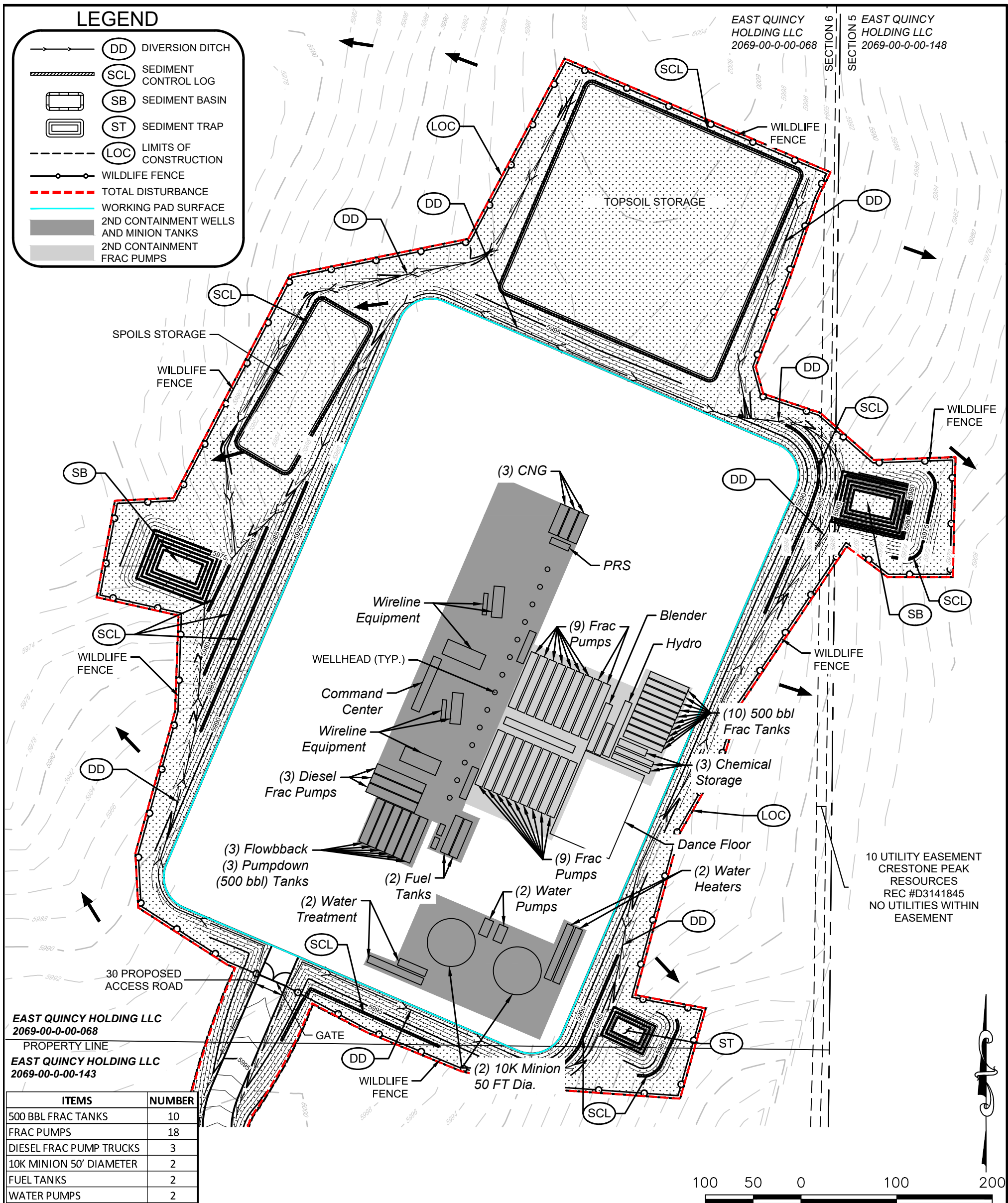
WILDLIFE FENCE

TOTAL DISTURBANCE

WORKING PAD SURFACE

2ND CONTAINMENT WELLS AND MINION TANKS

2ND CONTAINMENT FRAC PUMPS



EAST QUINCY HOLDING LLC  
2069-00-0-00-068

PROPERTY LINE  
EAST QUINCY HOLDING LLC  
2069-00-0-00-143

ITEMS	NUMBER
500 BBL FRAC TANKS	10
FRAC PUMPS	18
DIESEL FRAC PUMP TRUCKS	3
10K MINION 50' DIAMETER	2
FUEL TANKS	2
WATER PUMPS	2
FLOWBACK	3
PUMPDOWN TANKS	3
BLENDER	1
COMMAND CENTER	1
DANCE FLOOR	1
WIRELINE EQUIPMENT	2
HYDRO	1
CHEMICAL STORAGE	3
WATER HEATERS	2
CNG	3
PRS	1

CRESTONE PEAK RESOURCES OPERATING LLC

ALAMOSA 5-64 6-1 1BH, 2AH, 2BH, 3AH, 3BH, 4AH, 4BH, 5-4-3 1AH, 1BH, 2AH, 2BH, 3AH, 3BH, 4AH  
SECTION 6, T5S, R64W, 6TH P.M.  
ARAPAHOE COUNTY, COLORADO

PRELIMINARY WELL COMPLETION & STIMULATION LAYOUT

DRAWN BY: KMG

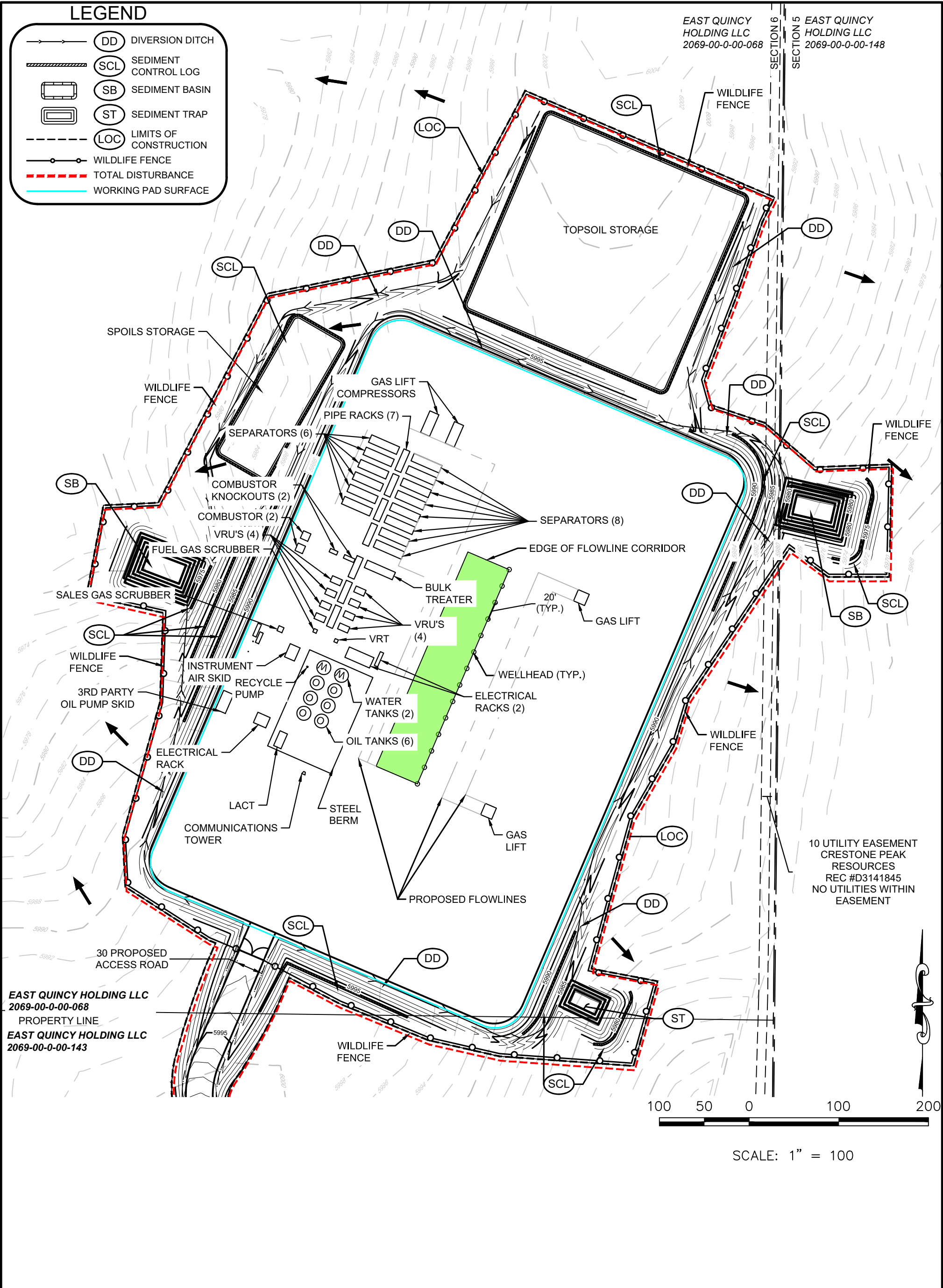
DATE DRAWN: 06-24-21

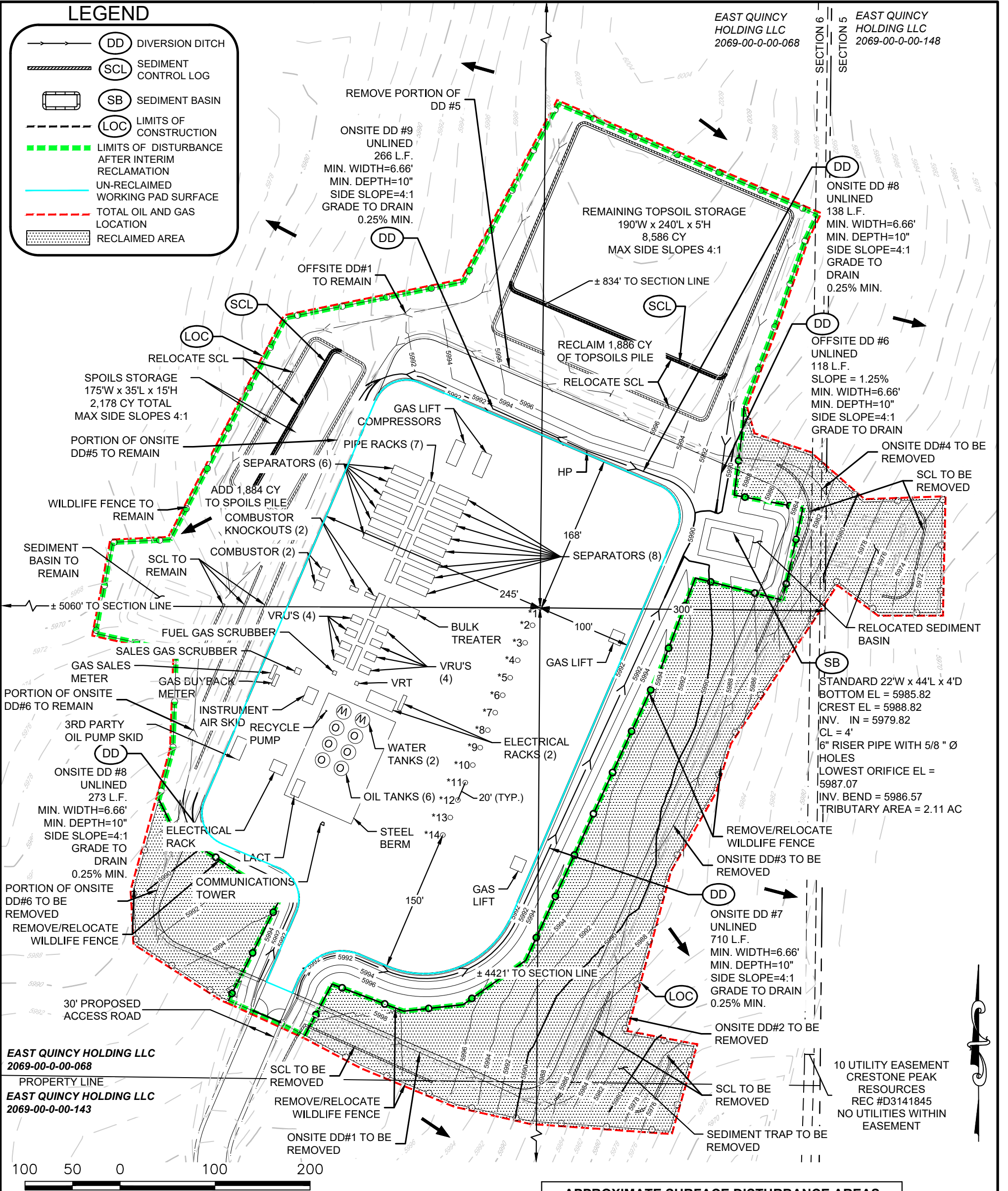
Westwood

Westwoodps.com  
Westwood Professional Services, Inc.

10333 E DRY CREEK RD.  
SUITE 240  
ENGLEWOOD, CO 80112  
TEL: 720.482.9526







TAG	WELL NAME	TAG	WELL NAME
*1	ALAMOSA 5-64 6-1 1BH	*8	ALAMOSA 5-64 6-4-3 1AH
*2	ALAMOSA 5-64 6-1 2AH	*9	ALAMOSA 5-64 6-4-3 1BH
*3	ALAMOSA 5-64 6-1 2BH	*10	ALAMOSA 5-64 6-4-3 2AH
*4	ALAMOSA 5-64 6-1 3AH	*11	ALAMOSA 5-64 6-4-3 2BH
*5	ALAMOSA 5-64 6-1 3BH	*12	ALAMOSA 5-64 6-4-3 3AH
*6	ALAMOSA 5-64 6-1 4AH	*13	ALAMOSA 5-64 6-4-3 3BH
*7	ALAMOSA 5-64 6-1 4BH	*14	ALAMOSA 5-64 6-4-3 4AH

APPROXIMATE SURFACE DISTURBANCE AREAS	
	ACRES
UN-RECLAIMED WORKING PAD SURFACE	4.42
ACREAGE AFTER INTERIM RECLAMATION	9.54
APPROXIMATE RECLAIMED DISTURBANCE	3.02
TOTAL OIL AND GAS LOCATION	± 12.56