



<div>NOTES:</div> <div>Alamosa 5-64-6-1</div> <div>Section 6 T5S R64W (NENE)</div> <div>Arapahoe County, CO</div>		REFERENCE DRAWINGS		No	PROJ. NUMBER	REVISIONS				BY	CHKD	APVD	DATE		BY	DATE	<div><div>CRESTONE PEAK RESURVER</div><div>PROCESS FLOW DIAGRAM - PRODUCTION</div><div>WELL PAD 3-PHASE SEPARATION</div></div>	DRAWING NUMBER WATKINS1W-PFD-1200	SCALE NONE	REVISION 0	
						VERSION - 1: 05/05/2022									DRAWN						
															CONST.						
															MECH.						
															CIV./STRUCT.						
															ELECT.						
															PIPING						
															INSTR.						
															PM						
															PROCESS						
				ISSUED FOR CONSTRUCTION				JLR	TCF	RFD	02/15/22										

CRESTONE PEAK RESURVER

14000 E. Highway 100, Suite 100, Fort Collins, CO 80504

PH: 970.226.8888 FAX: 970.226.8889

WWW.CRESTONEPEAKRESURVER.COM

PROJECT: WATKINS1W-PFD-1200

CLIENT: ARAPAHOE COUNTY

DATE: 02/15/22

BY: JLR

CHKD: TCF

APVD: RFD

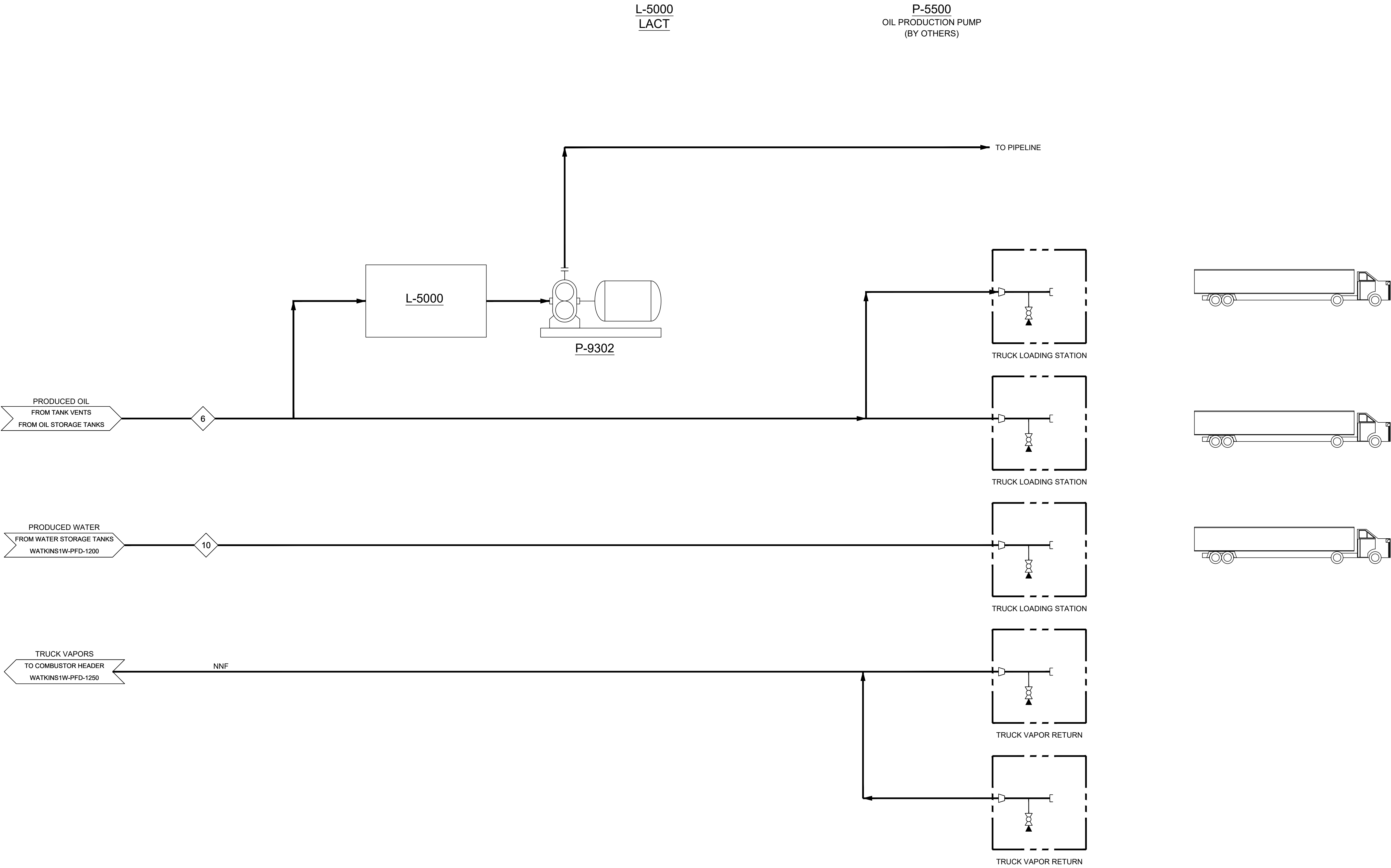
DATE: 02/15/22

WELL PAD 3-PHASE SEPARATION

SCALE: NONE

REVISION: 0

WATKINS1W-PFD-1200.dwg
PLOT DATE: Monday, February 14, 2022 3:59:02 PM
DWG NAME: G:\LDIS\CLIENT_PROJECTS\Crestone Peak Resources\Watkins Single Well Segs Standard\Main\WATKINS1W-PFD-1200.dwg



NOTES:



REFERENCE DRAWINGS		No	PROJ. NUMBER	REVISIONS		BY	CHKD	APVD	DATE		BY	DATE
		1								DRAWN		
		2								CONST.		
		3								MECH.		
		4								CIV./STRUCT.		
		5								ELECT.		
		6								PIPING		
		7								INSTR.		
		8								PM		
		9								PROCESS		
		10										



CRESTONE PEAK
RESOURCES
CRESTONE PEAK RESOURCES
WATKINS SINGLE WELL STANDARD
PROCESS FLOW DIAGRAM
WELL PAD 3-PHASE SEPARATION

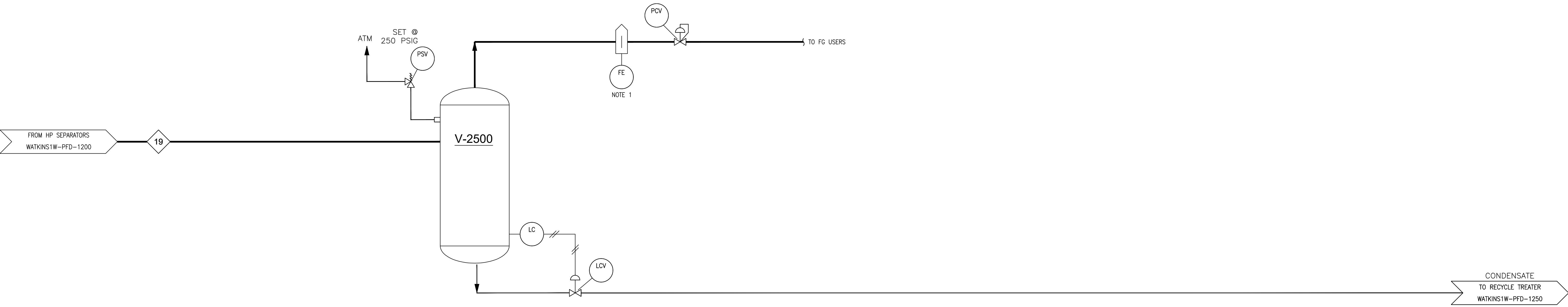
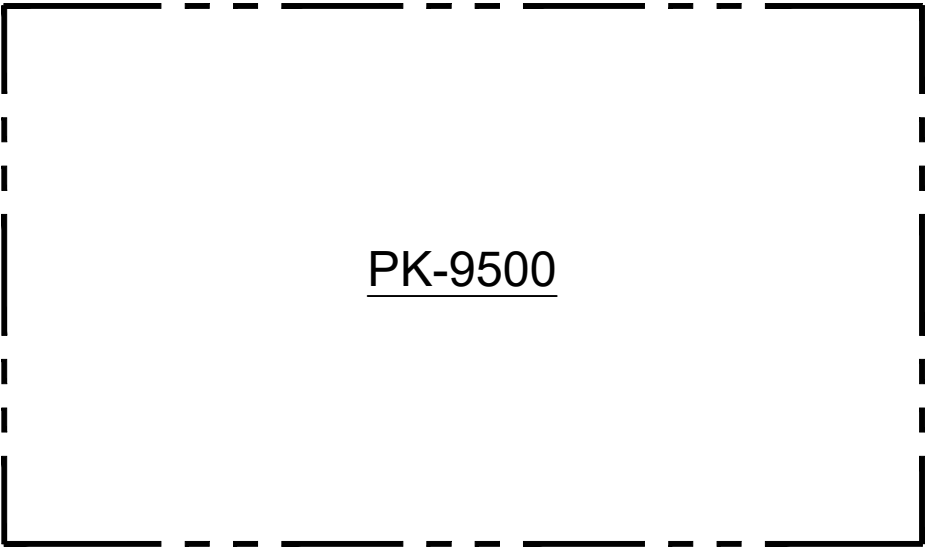
DRAWING NUMBER
WATKINS1W-PFD-1600

SCALE
NONE

REVISION
0

V-2200
FUEL GAS SCRUBBER
18" O.D. x 42" S/S
MAWP: 250 PSIG @ -20°F/200°F

PK-9500
INSTRUMENT AIR PACKAGE
CAPACITY: 12.5 CFM @ 125 PSIG



NOTES:
1. SPACE FOR METER TO BE INCLUDED. METER NOT INSTALLED AT THIS TIME.



REFERENCE DRAWINGS		No	PROJ. NUMBER	REVISIONS				BY	CHKD	APVD	DATE		BY	DATE
		1										DRAWN		
		2										CONST.		
		3										MECH.		
		4										CIV./STRUCT.		
		5										ELECT.		
		6										PIPING		
		7										INSTR.		
		8										PM		
		9										PROCESS		
		10												

CRESTONE PEAK
RESOURCES
WATKINS SINGLE WELL STANDARD
PROCESS FLOW DIAGRAM
WELL PAD 3-PHASE SEPARATION

DRAWING NUMBER	SCALE	REVISION
WATKINS1W-PFD-1900	NONE	0

VALVE & FLOW SYMBOLS

	GATE VALVE		VALVE ACTUATOR DOUBLE ACTING
	PLUG VALVE		VALVE ACTUATOR SINGLE ACTING (SPRING CLOSE)
	BALL VALVE		VALVE ACTUATOR SINGLE ACTING (SPRING OPEN)
	NEEDLE VALVE		SOLENOID VALVE
	GAUGE VALVE		SOLENOID VALVE THREE-WAY
	GLOBE VALVE		SOLENOID VALVE WITH MANUAL RESET
	CHECK VALVE		MANUAL ACTUATOR or RESET
	SWING CHECK VALVE		CONTROL VALVE
	BUTTERFLY VALVE		ANGLE CONTROL VALVE (AIR TO CLOSE)
	3-WAY VALVE W/ HANDLE		ANGLE CONTROL VALVE (AIR TO OPEN)
	3-WAY VALVE W/ MANUAL RESET		ACTUATED 3-WAY CONTROL VALVE (AIR TO CLOSE)
	PRESSURE & VACUUM RELIEF VALVE		ACTUATED 3-WAY CONTROL VALVE (AIR TO OPEN)
	PRESSURE RELIEF STRAIGHT THROUGH PATTERN		CRANKCASE EXPLOSION or BACKFIRE PRESSURE RELIEF VALVE
	RELIEF VALVE - SPRING or INTEGRAL PILOT		4-WAY VALVE
	RELIEF VALVE - INTEGRAL PILOT (REMOTE SENSING)		ANGLE VALVE
	PILOT OPERATED RELIEF VALVE		CHOKE VALVE ADJUSTABLE
	CRANKCASE EXPLOSION or BACKFIRE PRESSURE RELIEF VALVE		CHOKE VALVE FIXED
	4-WAY VALVE		CHOKE NIPPLE
	ANGLE VALVE		THREE WAY BALL VALVE
	CHOKE VALVE ADJUSTABLE		BLOCK & BLEED VALVE (INSTRUMENT)
	CHOKE VALVE FIXED		QUICK EXHAUST VALVE
	CHOKE NIPPLE		PETCOCK
	THREE WAY BALL VALVE		CONTINUOUS BLOWDOWN VALVE
	BLOCK & BLEED VALVE (INSTRUMENT)		THERMAL VALVE (VF) (THERMOSTATIC)

	FLANGES		INSULATION
	UNION		INSULATION W/ HEAT TRACE
	INSULATING FLANGE		WELD CAP or PIPE CAP or LINE CAP or TERMINATION
	INSULATING JOINT (MONOLITHIC)		HOSE CONNECTOR (CROWS FOOT)
	INSULATED COUPLING or UNION (CONDUIT, PIPE OR TUBING)		EDGE OF SKID CONNECTION
	CONE STRAINER W/ APEX UPSTREAM		FLAME ARRESTOR
	TEE STRAINER or CLEANOUT		Y STRAINER
	BASKET STRAINER or FILTER		Y STRAINER W/ VALVE
	FLOW ELEMENT FLANGED W/ VALVES (ORIFICE)		RUPTURE DISC PRESSURE SAFETY ELEMENT
	INLINE FLOW INDICATOR		RUPTURE DISC VACUUM
	FLOW SIGHT GLASS		ORIFICE PLATE IN QUICK CHANGE FITTING
	TURBINE METER		BLEED RING W/ PLUG
	POSITIVE DISPLACEMENT METER		BLEED RING W/ VENT VALVE
	VENTURI		SPEC BLIND (OPEN)
	CORIOLIS FLOWMETER		SPEC BLIND (CLOSED)
	MAGNETIC FLOWMETER		PADDLE BLIND (OPEN)
	STRAIGHTENING VANES		PADDLE BLIND (CLOSED)
	EXPANSION JOINT		FLEX COUPLING AEROQUIP or DRESSER TYPE
	STEAM/CONDENSATE TRAP		VENT CAP
	INSTRUMENT PULSATION DAMPENERS		OPEN DRAIN
	FLEXIBLE HOSE RUBBER, FLANGED		CLOSED DRAIN
	FLEXIBLE HOSE RUBBER, w/ CONNECTOR		P TRAP
	FLEXIBLE HOSE RUBBER, w/ FLANGED		SPEC BREAK
	CONCENTRIC REDUCER		SPOOL PIECE
	ECCENTRIC REDUCER (FSD)		INTERMITTENT BLOWDOWN VALVE
	ECCENTRIC REDUCER (FSU)		RESTRICTION ORIFICE

INSTRUMENTATION IDENTIFICATION LETTERS (ISA) (USED INSIDE INSTRUMENT BALLOONS)

AE - ANALYSIS ELEMENT	PC - PRESSURE CONTROLLER
AI - ANALYSIS INDICATOR	PCV - PRESSURE CONTROL VALVE
AIC - ANALYSIS INDICATING CONTROLLER	PDC - PRESSURE DIFFERENTIAL CONTROLLER
AIS* - ANALYSIS INDICATING SWITCH	PDI - PRESSURE DIFFERENTIAL INDICATOR
AIT - ANALYSIS INDICATOR AND TRANSMITTER	PDI* - PRESSURE DIFFERENTIAL INDICATING CONTROLLER
ARC - ANALYSIS RECORDER	PDI* - PRESSURE DIFFERENTIAL INDICATING SWITCH
ARC - ANALYSIS RECORDING CONTROLLER	PDI* - PRESSURE DIFFERENTIAL INDICATING TRANSMITTER
AS* - ANALYSIS SWITCH	PDR - PRESSURE DIFFERENTIAL RECORDER
AT - ANALYSIS TRANSMITTER	PDS* - PRESSURE DIFFERENTIAL SWITCH
AV - ANALYSIS (LOOP) CONTROL VALVE	PDT - PRESSURE DIFFERENTIAL TRANSMITTER
AY - ANALYSIS RELAY	PDY - PRESSURE DIFFERENTIAL SIGNAL TRANSDUCER,
BE - BURNER FLAME DETECTOR	SOLENOID, RELAY, OR COMPUTING DEVICE
BI - BURNER FLAME INDICATOR	PE - PRESSURE PRIMARY ELEMENT
BS* - BURNER FLAME SWITCH	PG - PRESSURE GLASS (OBSERVATION ONLY)
BT - BURNER TRANSMITTER	PI - PRESSURE INDICATOR
BX - BURNER FLAME TV RECEIVER	PIC - PRESSURE INDICATING CONTROLLER
CE - CONDUCTIVITY PRIMARY ELEMENT	PIT - PRESSURE INDICATING TRANSMITTER
CRE - CORROSION PRIMARY ELEMENT	PJY - PRESSURE SCANNING RELAY
CI - CONDUCTIVITY INDICATOR	PR - PRESSURE RECORDER
CRI - CORROSION INDICATOR	PRC - PRESSURE RECORDING CONTROLLER
CIC - CONDUCTIVITY INDICATING CONTROLLER	PSY - PRESSURE SCANNING RELAY
CP - CORROSION TEST CONNECTION	PSE - PRESSURE SAFETY ELEMENT (RUPTURE DISK)
CR - CONDUCTIVITY RECORDER	PT - PRESSURE TRANSMITTER
CRC - CONDUCTIVITY RECORDING CONTROLLER	PY - PRESSURE SIGNAL TRANSDUCER, SOLENOID,
CT - CONDUCTIVITY TRANSMITTER	RELAY, OR COMPUTING DEVICE
CRAN - CORROSION TRANSMITTER	PZ - PRESSURE ACTUATED VALVE
DC - DENSITY CONTROLLER	PZV - PRESSURE ACTUATED VALVE
DE - DENSITY PRIMARY ELEMENT	SC - SPEED CONTROLLER
DI - DENSITY INDICATOR	SD - SHUTDOWN VALVE
DIC - DENSITY INDICATING CONTROLLER	SE - SENSING ELEMENT (SPEED PICKUP)
DI - DENSITY TOTALIZER	SI - SPEED INDICATOR
DR - DENSITY RECORDER	SIC - SPEED INDICATING CONTROLLER
DRC - DENSITY RECORDING CONTROLLER	SIT - SPEED INDICATING TRANSMITTER
DT - DENSITY TRANSMITTER	SR - SPEED RECORDER
ED - EMERGENCY SHUTDOWN	SRC - SPEED RECORDING CONTROLLER
FC - FLOW CONTROLLER	SS* - SPEED SWITCH
FCV - FLOW CONTROL VALVE (SELF ACTUATED)	ST - SPEED TRANSMITTER
FE - FLOW ELEMENT	SV - SPEED (LOOP) CONTROL VALVE
FG - FLOW SIGHT GAUGE OR GLASS	SY - SPEED SIGNAL TRANSDUCER, SOLENOID,
FI - FLOW INDICATOR	RELAY, OR COMPUTING DEVICE
FIC - FLOW INDICATING CONTROLLER	SZ - SPEED ACTUATOR
FIR - FLOW INDICATOR RECORDER	TC - TEMPERATURE CONTROLLER
FIT - FLOW INDICATING TRANSMITTER	TCS* - TEMPERATURE CONTROL SWITCH
FO - FLOW RESTRICTION ORIFICE	TCV - TEMPERATURE CONTROL VALVE
FO - FLOW TOTALIZER	(SELF ACTUATED)
FOI - FLOW TOTALIZING INDICATOR	TD - TEMPERATURE DIFFERENTIAL TRANSMITTER
FR - FLOW RECORDER	TE - TEMPERATURE ELEMENT
FRC - FLOW RECORDING CONTROLLER	TI - TEMPERATURE INDICATOR
FS - FLOW SWITCH	TIC - TEMPERATURE INDICATING CONTROLLER
FT - FLOW TRANSMITTER	TI* - TEMPERATURE INDICATING TRANSMITTER
FU - FLOW COMPUTER (FISCAL METERING)	TJ - TEMPERATURE MULTIPPOINT SCANNING INDICATOR
FV - FLOW (LOOP) CONTROL VALVE	LJR - TEMPERATURE MULTIPPOINT SCANNING RECORDER
FY - FLOW RELAY, SOLENOID, COMPUTING DEVICE	TR - TEMPERATURE RECORDER
(I/P FOR FLOW)	TRC - TEMPERATURE RECORDING CONTROLLER
GC - GRAVITY CONTROLLER	TS* - TEMPERATURE SWITCH
GI - GRAVITY PRIMARY ELEMENT	TT - TEMPERATURE TRANSMITTER
GI - GRAVITY INDICATOR	TV - TEMPERATURE CONTROL VALVE
GIC - GRAVITY INDICATING CONTROLLER	(NOT SELF ACTUATED)
GR - GRAVITY RECORDER	TW - TEMPERATURE WELL (THERMOWELL)
GRC - GRAVITY RECORDING CONTROLLER	TY - TEMPERATURE SIGNAL TRANSDUCER, SOLENOID,
GT - GRAVITY TRANSMITTER	RELAY, OR COMPUTING DEVICE
HC - HAND CONTROLLER	TZV - TEMPERATURE ACTUATED VALVE
HIC - HAND INDICATOR CONTROLLER (MANUAL)	UC - MULTIVARIABLE CONTROLLER
HS - HAND SWITCH (ON-OFF)	UCV - MULTIVARIABLE CONTROL VALVE
HV - HAND CONTROL VALVE	(SELF CONTAINED)
IA - INSTRUMENT AIR	UI - MULTIVARIABLE CALCULATION INDICATOR
IS* - CURRENT SWITCH	UI* - MULTIVARIABLE INDICATING CONTROLLER
IT - CURRENT TRANSMITTER	US* - MULTIVARIABLE SWITCH
JT - POWER TRANSMITTER	UT - MULTIVARIABLE TRANSMITTER
KC - TIME CONTROL	UV - MULTIVARIABLE CONTROL VALVE
KCV - TIME CONTROL VALVE	(NOT SELF CONTAINED)
KI - TIME INDICATOR	UY - MULTIVARIABLE SIGNAL CONVERSION ELEMENT
KS - SEQUENCE RELATED SWITCH FUNCTION	VA* - VIBRATION ALARM
KV - TIME (LOOP) CONTROL VALVE	VE - VIBRATION ELEMENT
LC - LEVEL CONTROLLER	VI - VIBRATION INDICATOR
LC* - LEVEL CONTROL SWITCH	VIT - VIBRATION INDICATING TRANSMITTER
LCV - LEVEL CONTROL VALVE (SELF ACTUATED)	VS* - VIBRATION SWITCH
LG - LEVEL GAUGE	VT - VIBRATION TRANSMITTER
LI - LEVEL INDICATOR	WE - WEIGHT PRIMARY ELEMENT
LIC - LEVEL INDICATING CONTROLLER	WI - WEIGHT INDICATOR
LIT - LEVEL INDICATING TRANSMITTER	WJ - WEIGHT TOTALIZER
LR - LEVEL RECORDER	WR - WEIGHT RECORDER
LRC - LEVEL RECORDING CONTROLLER	WT - WEIGHT TRANSMITTER
LS* - LEVEL SWITCH	XA - ANNUNCIATOR POINT OR UNSPECIFIED ALARM
LT - LEVEL TRANSMITTER	OR REMOTE SHUTDOWN
LV - LEVEL CONTROL VALVE (NOT SELF ACTUATED)	XI - USER DEFINED INDICATOR
MC - MOISTURE CONTROL	XS - REMOTE STATUS
MCV - MOTOR CONTROL VALVE (SELF ACTUATED)	XY - USER DEFINED VALVE
ME - MOISTURE PRIMARY ELEMENT	*XY - SOLENOID VALVE
MI - MOISTURE INDICATOR	ZE - POSITION ELEMENT
MIC - MOISTURE INDICATING CONTROLLER	ZI - POSITION INDICATOR (ZIO, ZIC)
MR - MOISTURE RECORDER	ZH - POSITION INDICATOR (OPEN)
MRC - MOISTURE RECORDING CONTROLLER	ZIL - POSITION INDICATOR (CLOSED)
MS - MANUAL SHUTDOWN SWITCH	ZL - POSITION LIGHT (INDICATOR)
MT - MOISTURE TRANSMITTER	ZS* - POSITION SWITCH or LIMIT SWITCH
MY - MOTOR CONTROL VALVE (NOT SELF ACTUATED)	ZT - POSITION TRANSMITTER
NE - VISCOSITY ELEMENT	ZV - POSITION VALVE (LIMIT VALVE), PROXIMITY SWITCH
NI - VISCOSITY INDICATOR	ZY - POSITION SIGNAL TRANSDUCER, SOLENOID,
NT - VISCOSITY TRANSMITTER	RELAY, OR COMPUTING DEVICE

TYPICAL EQUIPMENT IDENTIFICATION

TAG No: DESCRIPTION:	V-22XX SEPARATOR
MAKE AND MODEL:	...
DIMENSIONS:	...inches O.D. x ...inches S/S
DESIGN PRESSURE @ DESIGN TEMP., CORROS. ALLOWANCE:	... psig @ ... °F, ...inches C.A.
GAS FLOW RATES:	... MMscfd
LIQUID FLOW RATES:	... USgpm ... bbl/h
DUTIES: MOTOR POWER:	... hp @ V/Hz/Hz S.R.:
STRESS RELIEVING AND X-RAY:	YES/NO, X-RAY: FULL/100%/SPOT

MECHANICAL EQUIPMENT ABBREVIATIONS

AD - ADAPTER	HTR - HEATER
AF - AIR FILTER	ICP - INSTRUMENT CONTROL PANEL
AN - ANALYZER	LD - LOCKING DEVICE
B - BELT	LU - LUBRICATOR
BD - BETA DRIVE	LV - LOUVERS
BF - BLIND FLANGE	M - MOTOR
BG - BELT GUARD	MB - MANFOLD BAR (LUBRICATOR)
BKT - BRACKET	MCC - MOTOR CONTROL CENTER
BL - BLOCK (LUBRICATOR)	MCOV - MOTOR OPERATED VALVE
BJ - BARRING JACK	MS - MOTOR STARTER
BR - BLEED RING	P - PUMP
BU - BUSHING	PA - PNEUMATIC ACTUATOR
C - COMPRESSOR	PB - PILLOW BLOCK
CAP - CAP (PRESSURE)	PD - PULSATION DAMPENER
CB - CLEARANCE BOTTLE	PLS - PRELUDE SYSTEM
CC - CATALYTIC CONVERTER	PM - PNEUMATIC (AIR/GAS) MOTOR
CG - COUPLING GUARD	PMS - PNEUMATIC STARTER
CHOP - CHAIN OPERATED	PTO - POWER TAKE OFF
CP - COUPLING	PW - PISTON NUT WRENCH
CPI - CYCLE PIN INDICATOR (LUBRICATOR)	SA - STACK ARRESTOR
CS - CYLINDER SUPPORT	SB - SPECTACLE BLIND
CV - CYLINDER VALVE	SH - SHAFT
CW - CROSSHREAD NUT WRENCH	SLB - SLIDE BASE (MOTOR)
CYC - CYLINDER	SN - SNUBBER
DEL - DELUGE VALVE	ST - TANK (STORAGE)
DI - DIE	STR - STRAINER
E/H - ELECTRO/HYDRAULIC ACTUATOR	SV - SHEAVE
EJ - EXPANSION JOINT	T - TURBINE
ERD - EXPLOSION RELIEF DEVICE	TR - TRIM TRAM
ES - EXHAUST SILENCER	TS - TEMPORARY STRAINER
F - FILTER	UL - UNLOADER
FA - FLAME ARRESTER	V - VESSEL (CODED AND NON-CODED)
FIL - FILTER ELEMENT	V3W - 3-WAY VALVE
FJ - FLEXIBLE JOINT	V4W - 4-WAY VALVE
FLC - FLOAT CHAMBER	VBB - BLOCK AND BLEED VALVE
FVCP - FIXED VOLUME CLEARANCE POCKET	VF - FIRE SAFE VALVE
G - GEAR	VI - VALVE
GN - GENERATOR	VNP - VANE PACK
HCA - HEAT EXCHANGER AIR COOLER	VPD - PULSATION DAMPENER, VALVE
HCP - HOSE CLAMP	VTI - VALVE TEST INSERT
HCN - HOSE CONNECTION	VVCP - VARIABLE VOLUME CLEARANCE POCKET
HH - HAND HOLE	VW - VALVE WRENCH
HM - HYDRAULIC MOTOR	XC - CHOKE VALVE
HR - HOSE REEL	XCN - CHOKE NIPPLE
HT - HEAT EXCHANGER (COOLER)	XW - CROSSHREAD WEIGHT

MISC. RELATED ABBREVIATIONS

A/G - ABOVE GROUND	MLW - MEAN LOW WATER
AC - AIR TO CLOSE	MMSCFD - MILLION STANDARD CUBIC FEET PER DAY
AO - AIR TO OPEN	MSCFD - THOUSAND STANDARD CUBIC FEET PER DAY
AS - AIR SUPPLY	DAY
BOP - BOTTOM OF PIPE	MSL - MEAN SEA LEVEL
BSW - BOTTOM SEDIMENT AND WATER	MW - MANWAY
BW - BUTT WELD	NB - IMPORTANT NOTE (NOTA BIEN)
CA - CORROSION ALLOWANCE	NC - NORMALLY CLOSED
CO - CLEAN OUT	NNF - NORMALLY NO FLOW
CPP - PRESSURE CONNECTION - PLUGGED	NO - NORMALLY OPEN
CS - CARBON STEEL	NS - NITROGEN SUPPLY
CSC - CAR SEAL CLOSED	NTS - NOT TO SCALE
CSO - CAR SEAL OPEN	OD - OUTSIDE DIAMETER
CTP - TEMPERATURE CONNECTION - PLUGGED	OF - OWNER FURNISHED
D - DRAIN	OP - OPERATING PRESSURE
DP - DIFFERENTIAL PRESSURE	OPERATING TEMPERATURE
DP - DESIGN PRESSURE	PD - POSITIVE DISPLACEMENT
DPG - DRAIN PLUG	PGS - POWER GAS SUPPLY
EL - ELEVATION	PID - PROPORTIONAL, INTEGRAL, DIFFERENTIAL
EP - END OF PIPE	PO - PUMP OUT
ES - ELECTRIC SUPPLY	PP - PERSONNEL PROTECTION
ESD - EMERGENCY SHUTDOWN	PS - PIPE SUPPORT
ETR - ELECTRICAL TRACE	PSD - PROCESS SHUTDOWN
EX - EXHAUST	PSIG - POUNDS PER SQUARE INCH
F - FLARE	RA - REVERSE ACTING
F/F - FACE OF FLANGE	REF - REFERENCE
FB - FULL BORE	REV - REVISION
FF - FLAT FACE	RF - RAISED FACE
FLC - FAIL LOCKED (LAST POSITION)	RP - REDUCED PORT
FNU - FITTING MAKE-UP	RSP - REMOTE SETPOINT
FSD - FLAT SIDE DOWN	RTJ - RING TYPE JOINT
FSU - FLAT SIDE UP	S - SAMPLER
FW - FIELD WELD	S/S - SEAM TO SEAM
GJ - GLYCOL JACKET	SD - SHUTDOWN
GO - GEAR OPERATED	SE - SETPOINT
GS - GAS SUPPLY	SS - STAINLESS STEEL
H2S - HYDROGEN SULFIDE (SOUR GAS)	T/T - TANGENT TO TANGENT
HP - HORSEPOWER	TGS - TOP OF STEEL
HPS - HIGH PRESSURE	TP - TE-IN POINT
ID - INSIDE DIAMETER	TPP - TEMPERATURE POINT PLUGGED
IG - INSTRUMENT GAS SUPPLY	U/G - UNDER GROUND
IGV - INSTRUMENT GAS VENT	V - VENT
KPaG - KILOPASCAL GAGE	VF - VENDOR FURNISHED
LCD - LOCKED CLOSED	VFD - VARIABLE FREQUENCY DRIVE
LO - LOCKED OPEN	VP - VENT CONNECTION - PLUGGED
LP - LOW PRESSURE	VSA - VENT TO SAFE ATMOSPHERE
MAOP - MAXIMUM ALLOWABLE OPERATING PRESSURE	WN - WELD NECK
MAMP - MAXIMUM ALLOWABLE WORKING PRESSURE	WS - WATER SUPPLY
	Y - RELAY

LINE TYPES

MAJOR LINE TYPE	CAPILARY TUBING LINE TYPE
MAJOR SECONDARY LINE TYPE	HEAT TRACING LINE TYPE
UTILITY LINE TYPE	SONIC SIGNAL LINE TYPE
INSTRUMENT LINE TYPE	UNGUIDED SONIC SIGNAL LINE TYPE
PNEUMATIC LINE TYPE	LOGIC LINE TYPE
ELECTRIC LINE TYPE	MECHANICAL LINK LINE TYPE
HYDRAULIC LINE TYPE	BINARY LINE TYPE
LIMIT LINE TYPE	

NOTES:



CRESTONE PEAK RESOURCES
Shelton CRP-25 Pod
PRODUCTION PROCESS FLOW DIAGRAM
LEGEND SHEET

DRAWING NUMBER

WATKINS1W-PFD-1100

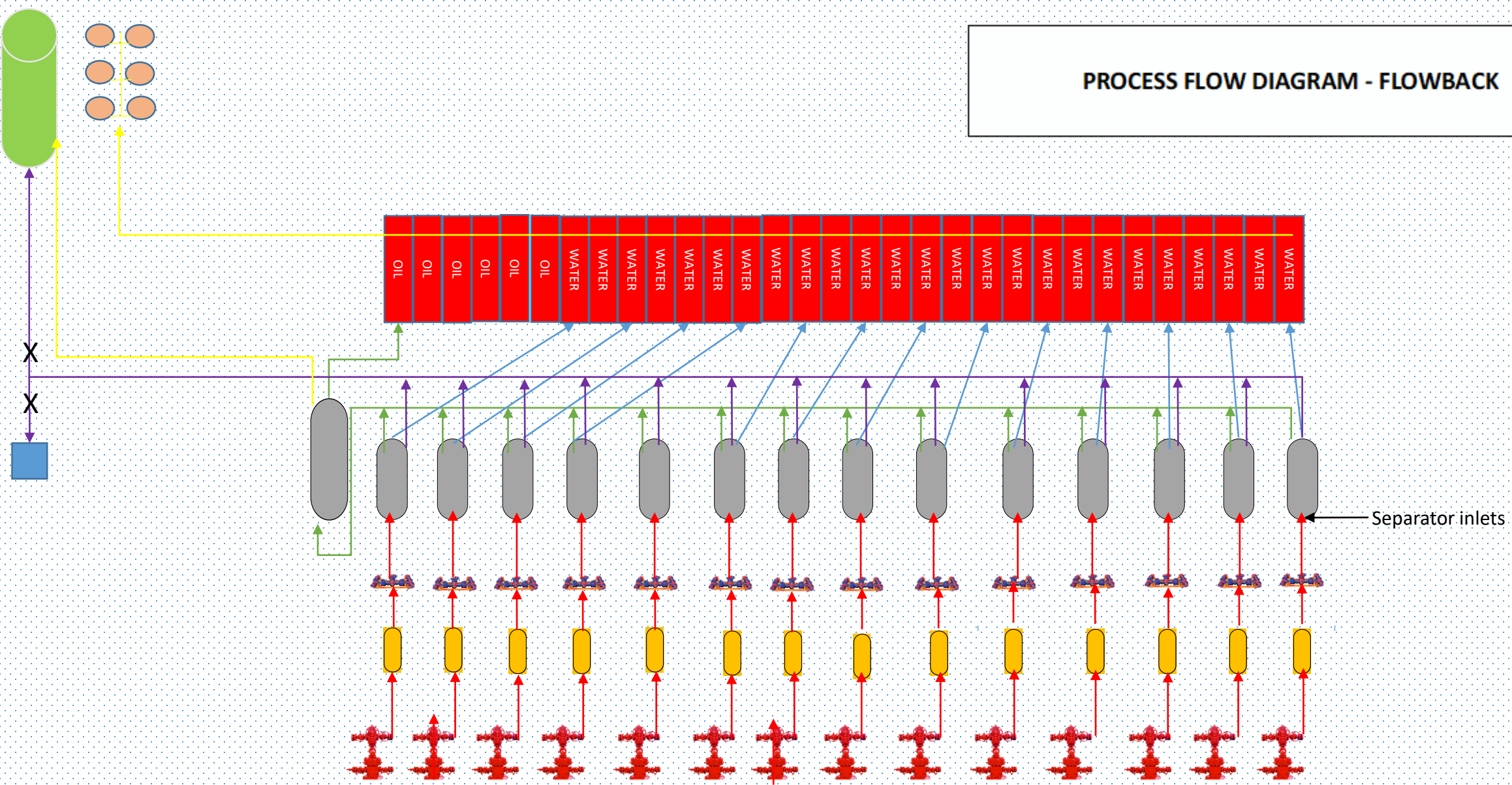
SCALE

NONE

REVISION

1

PROCESS FLOW DIAGRAM - FLOWBACK



Alamosa 5-64-6-1
Section 6 T5S R64W (NENE)
Arapahoe County, CO

Prepared by:



Version 2 - 05/05/2022

Description



Sealed Oil Tank



Sealed Water Tank



3" 206 Oil Piping



3" 206 LP Flare Gas Piping



3" 206 HP Flare Gas Piping



3" 206 Water Piping



2" 1502 Primary Piping (All Phases)



Incinerator with pilot sensing
automation linked to ESD's



Low Stage Bulk Unit



High Stage Unit, ESD's at inlets



Sand Separators



2" 1502 5 valve manifold and or choke tees



Well Head, ESD's installed on each



ECD



Sales Header



Unionized Ball Valve