



WATER PLAN

Alamosa 5-64 5-6-1 Plan

Plan Finalized: March 23, 2022

**Crestone Peak Resources, LLC's Water Plan was developed in accordance
with COGCC Rule 304.c.(18)**

Overall Description of Operations

Crestone Peak Resource, LLC's ("CPR") Water Plan pursuant to Rule 304.c.(18) is described herein.

Water for drilling operations for the Alamosa 5-64 5-6-1 Pad will be sourced from a fresh-water hydrant from Rangeview Metropolitan District near the intersection of 6th Avenue and N. Hayesmount Road. Fresh water used for completion operations will be transported by a temporary water line ("Layflat").

Layflat definition: Temporary, above-ground water supply line, typically 10" or 12" in diameter and typically made of synthetic rubber or similar "hose" material. They are used for the transfer of water from an identified water source to support company's hydraulic fracturing operations.

"Facilities" associated with use of Layflat lines include the following:

- In-line pumps
- Light plants with generators
- Spools
- Secondary containment equipment
- Ramps

Equipment used for installation may include pick-up trucks, flatbed trailers, skid steer, and skid steer mounted reel winder.

Layflat lines are laid on the surface, at grade and do not require excavation. They do not require staking to secure them from movement and are placed at least 10' from the edge of the roadway.

Deployment and Retrieval of a Layflat Line

A truck carrying spools of hose follows along-side a skid steer tractor. The skid steer carries and straddles the spool of Layflat line and releases the hose by the reel rolling forward. Victaulic couplings are used to assemble segments of Layflat line. The process of retrieving the Layflat line involves the same equipment and process in reverse (reel rolling backward).

Layflat lines are periodically pressure tested to assess the integrity of the materials as well as determine if there are any leak points. Any line that does not pass the periodic pressure testing is retired and replaced.

Table of Operations and Water Source

Phase of Operation	Source	Lat / Long of Source	Method of Transport	Water Type	Volume
Drilling and Pad Construction	Rangeview Metropolitan District	39.725429, -104.643050	Water Truck Pulling from Fill Station	Ground Water	24,500 bbls
Completions - Source 1	Rangeview Metropolitan District via Skyranch Storage and Lowry Storage	39.725429, -104.643050; 39.63611111, -104.58338889	Layflat	Ground Water	4,000,000 – 8,500,000bbls
Completions - Alternative Source 2	FRICO	39.95392778, -104.74666667	Layflat	Surface Water	4,000,000 – 8,500,000 bbls to support supply from Rangeview Metropolitan District

Planned Source and Volumes

The Alamosa 5-64 5-6-1 Pad is located within Arapahoe County. Primary source will be Rangeview Metropolitan District and Farmers Reservoir and Irrigation Company (FRICO) as a secondary or supplemental source. CPR will use a combination of ground water and surface water for its drilling and completion operations.

Primary source: Rangeview Metropolitan District water via the Sky Ranch Storage located in Section 10, T4S, R65W, 39.725429, -104.643050, Arapahoe County, Colorado and Lowry Storage located in Section 8, T4S, R65W, 39.63611111, -104.58338889, Arapahoe County, Colorado.

Crestone estimates that the Alamosa 5-64 5-6-1 Pad location will consume approximately 7,500,000 to 8,500,000 bbls of water. Daily consumption will be approximately 96,600 bbls per day.

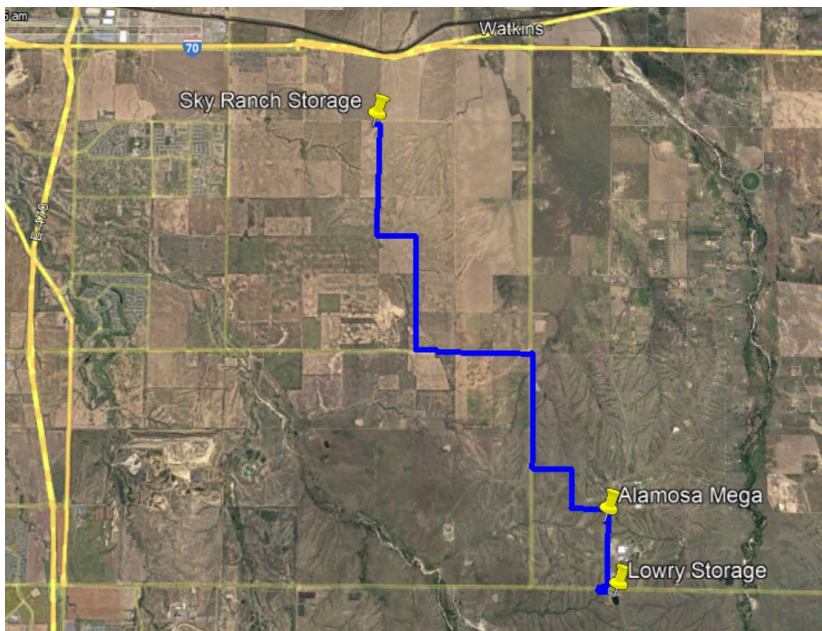
Route Description

Within Arapahoe County, Crestone has identified the following take-away point for water:

Rangeview Metropolitan District water via the Sky Ranch Storage located in Section 10, T4S, R65W, Arapahoe County, Colorado and Lowry Storage located in Section 8, T4S, R65W, Arapahoe County, Colorado

Pending permit approval from local and state authority, Crestone will work to determine the required public or private right of ways that will be needed to move water via Layflat lines from the source to the Alamosa Mega 5-64 5-6-1 Pad location.

Overview of water route: Temporary Layflat from Rangeview Metropolitan District's Skyranch and Lowry Storage (blue line):



Seller Information – Purchased Water

Rangeview Metropolitan District
34501 E. Quincy Ave. Bldg 34,
Watkins, CO 80137

Secondary Source: Surface Water from FRICO near Barr Lake: Farmers Reservoir and Irrigation Company and Crestone Peak Resources Operating LLC have an operating plan for Delivery of Non-Potable Water from Barr Lake. Water from Barr Lake is transferred via layflat to location. All water coming from Farmers Reservoir and Irrigation Company is fresh water. The source point is located in Section 23, T1S, R66W at 39.95392778, -104.74666667.

Crestone estimates that the Alamosa Mega 5-64 5-6-1 Pad location will consume approximately 7,500,000 to 8,500,000 bbls of water. Daily consumption will be approximately 96,600 bbls per day.

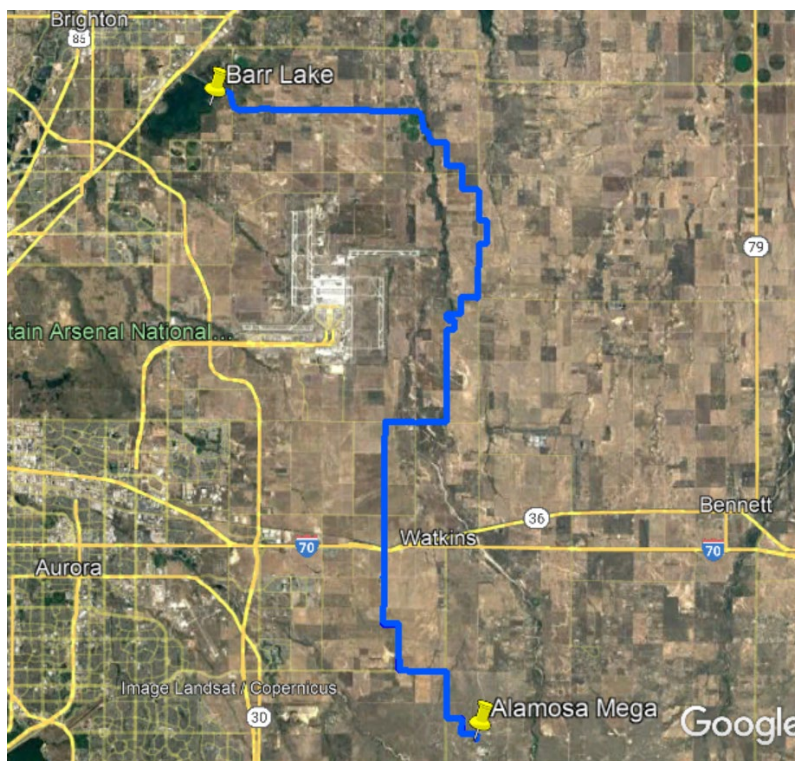
Route Description

Within Adams County, CPR has identified the following take-away point for water:

FRICO – Barr Lake, located in Section 23, T1S, R66W, Adams County, Colorado

Pending permit approval from local and state authority, Crestone will work to determine the required public or private right of ways that will be needed to move water via Layflat lines from the source to the Alamosa 5-64 5-6-1 Pad location. CPR owns a water line to transfer water under I-70, Colfax, and Union Pacific Railroad.

Overview of water route: Temporary Layflat from the FRICO Barr Lake Facility (blue line):



Seller Information – Purchased Water

Farmers Reservoir and Irrigation Company
80 South 27th Avenue
Brighton, CO 80601

Reuse and Recycle Plan

Due to the limited amount of produced water from Crestone in this region, Crestone balanced the potential environmental, health, and safety risk from loading, unloading, and treating produced water for use in completions activity against the benefit of water recycle.