

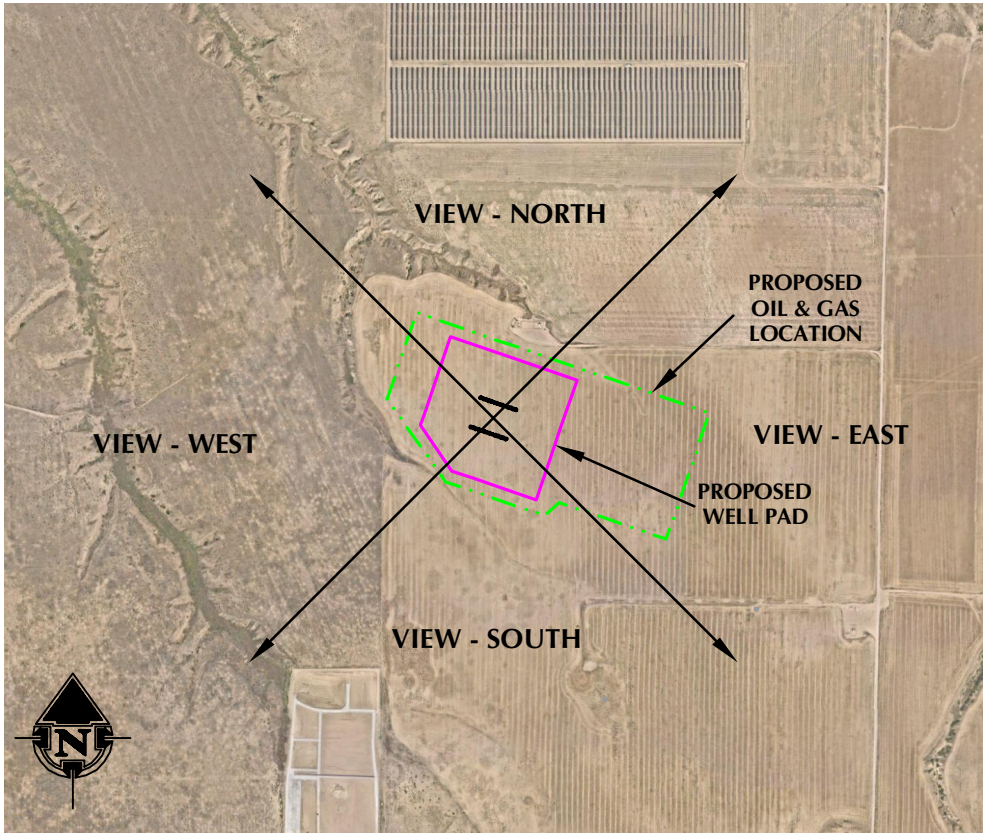
WELL PAD LOCATION PICTURES
RAINBOW 24-9HZ
SECTION 9, TOWNSHIP 5 NORTH, RANGE 67 WEST, 6TH P.M., GREELEY, COLORADO



LOCATION PICTURE OF RAINBOW 24-9HZ WELL PAD - CAMERA VIEW NORTH



LOCATION PICTURE OF RAINBOW 24-9HZ WELL PAD - CAMERA VIEW SOUTH



VIEW - OVERHEAD
AERIAL IMAGERY COURTESY OF NEARMAP
2021-08-22



LOCATION PICTURE OF RAINBOW 24-9HZ WELL PAD - CAMERA VIEW EAST



LOCATION PICTURE OF RAINBOW 24-9HZ WELL PAD - CAMERA VIEW WEST

K:\ANADARKO\2018\160_BROCKIE BROWN & RAINBOW\T5N_R67W_SEC_9\DWG\RAINBOW_28_WELL_OPTION_FINAL.DWG, 3/28/22, 10:55 PM, J.steven



LOVELAND OFFICE
6706 North Franklin Avenue
Loveland, Colorado 80538
Phone 970-776-4331

SHERIDAN OFFICE
1095 Saberton Avenue
Sheridan, Wyoming 82801
Phone 307-674-0609

CONSULTING, LLC

**Kerr-McGee Oil &
Gas Onshore LP**
1099 18th Street
Denver, Colorado 80202

DATE SURVEYED: 2/21/22
DATE: 3/1/22
DRAFTER: HJL
REVISED: 3/28/22

DATA SOURCES:
-AERIAL IMAGERY COURTESY OF NEARMAP.