

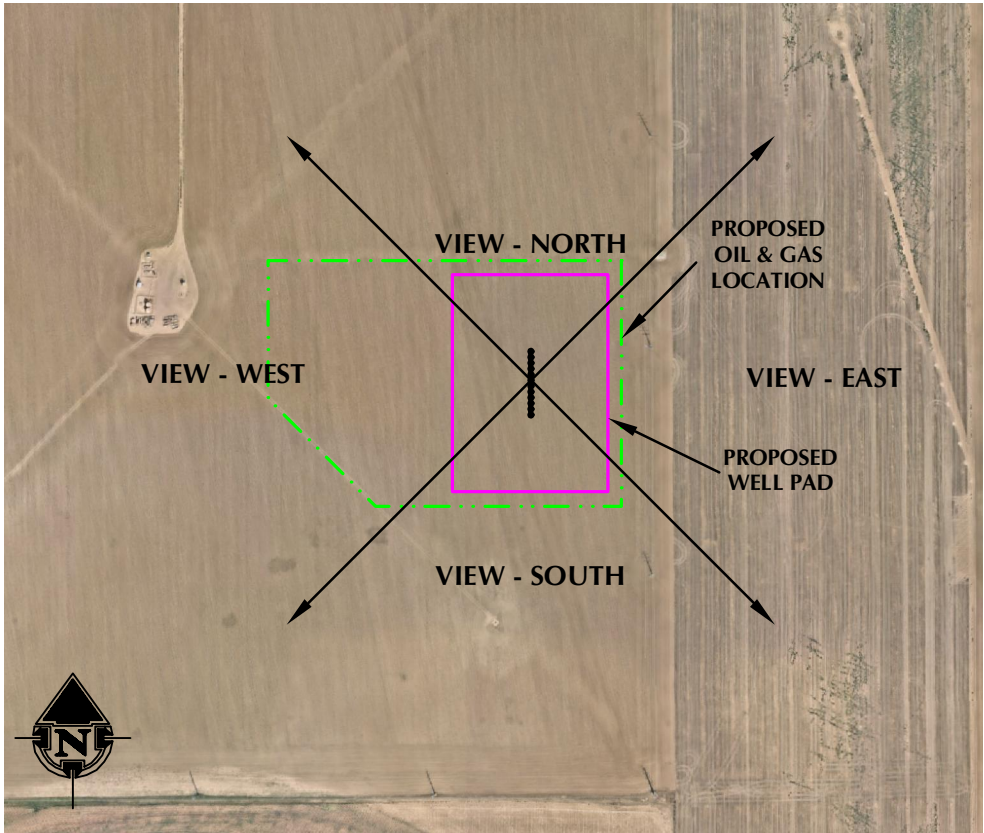
WELL PAD LOCATION PICTURES
BLUE CHIP 6-22HZ
SECTION 22, TOWNSHIP 5 NORTH, RANGE 67 WEST, 6TH P.M., GREELEY, COLORADO



LOCATION PICTURE OF BLUE CHIP 6-22HZ WELL PAD - CAMERA VIEW NORTH



LOCATION PICTURE OF BLUE CHIP 6-22HZ WELL PAD - CAMERA VIEW SOUTH



VIEW - OVERHEAD
AERIAL IMAGERY COURTESY OF NEARMAP
2021-08-22



LOCATION PICTURE OF BLUE CHIP 6-22HZ WELL PAD - CAMERA VIEW EAST



LOCATION PICTURE OF BLUE CHIP 6-22HZ WELL PAD - CAMERA VIEW WEST

K:\AMARNO\2020\2020_128_BLUE_CHIP_TSN_REVW_SEC_22\MOBILE BLUE CHIP TSN REVW SEC.dwg, 2/11/2022 12:25:07 PM, steven



LOVELAND OFFICE
6706 North Franklin Avenue
Loveland, Colorado 80538
Phone 970-776-4331

SHERIDAN OFFICE
1095 Saberton Avenue
Sheridan, Wyoming 82801
Phone 307-674-0609

CONSULTING, LLC

**Kerr-McGee Oil &
Gas Onshore LP**
1099 18th Street
Denver, Colorado 80202

DATE SURVEYED: 8/18/21
DATE: 2/7/22
DRAFTER: HJL
REVISED: 2/11/22

DATA SOURCES:
-AERIAL IMAGERY COURTESY OF NEARMAP.