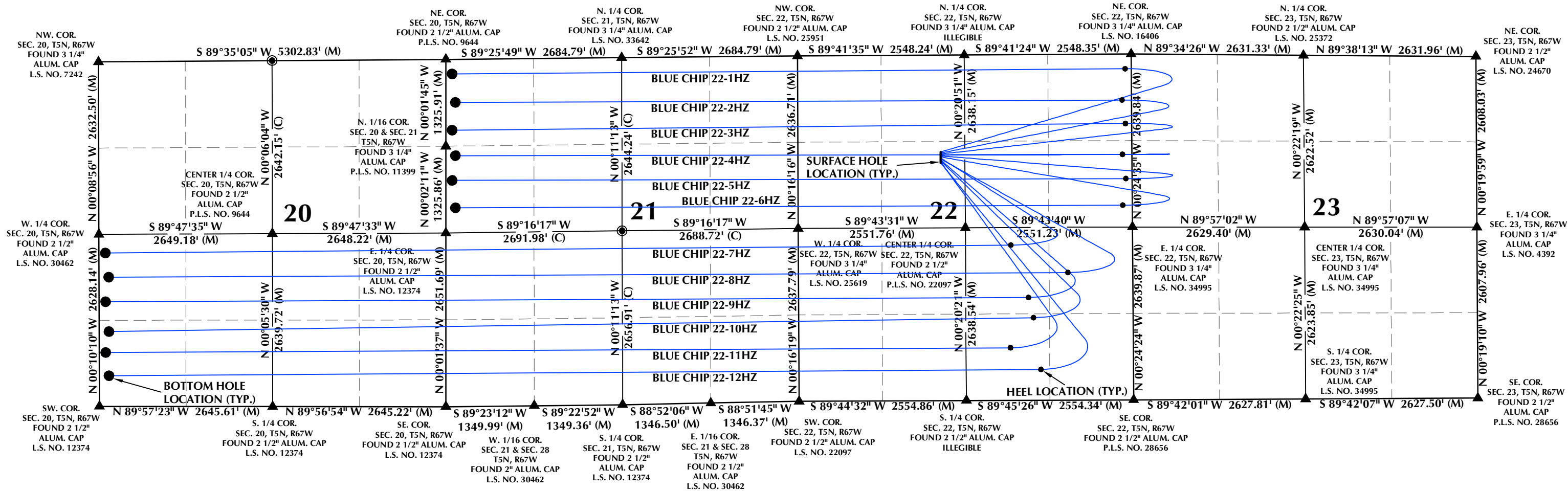
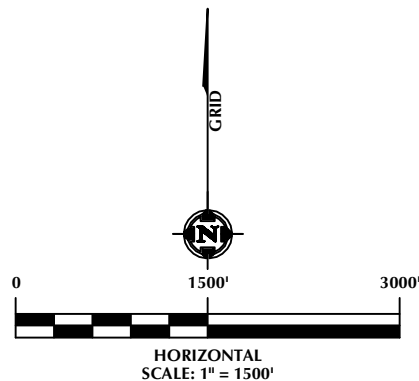


DIRECTIONAL WELL PLAT (COGCC) / MULTI-WELL PLAN (OGED)
SECTIONS 20, 21, 22 & 23, T5N, R67W



- NOTES:
- ▲ INDICATES SECTION CORNER.
 - INDICATES CALCULATED CORNER.
 - BASIS OF BEARING DERIVED FROM COLORADO COORDINATE SYSTEM OF 1983, NORTH ZONE.
 - ALL MEASURED DISTANCES ARE GRID.
 - COMBINED SCALE FACTOR: .99972348 CALCULATED FROM THE N. 1/4 CORNER OF SECTION 21, T5N, R67W.
 - WELL FOOTAGES ARE MEASURED AT RIGHT ANGLES TO THE SECTION LINES.



LOVELAND OFFICE
6706 North Franklin Avenue
Loveland, Colorado 80538
Phone 970-776-4331
SHERIDAN OFFICE
1095 Saberton Avenue
Sheridan, Wyoming 82801
Phone 307-674-0609

**Kerr-McGee Oil &
Gas Onshore LP**
1099 18th Street
Denver, Colorado 80202

WELL PAD - BLUE CHIP 6-22HZ

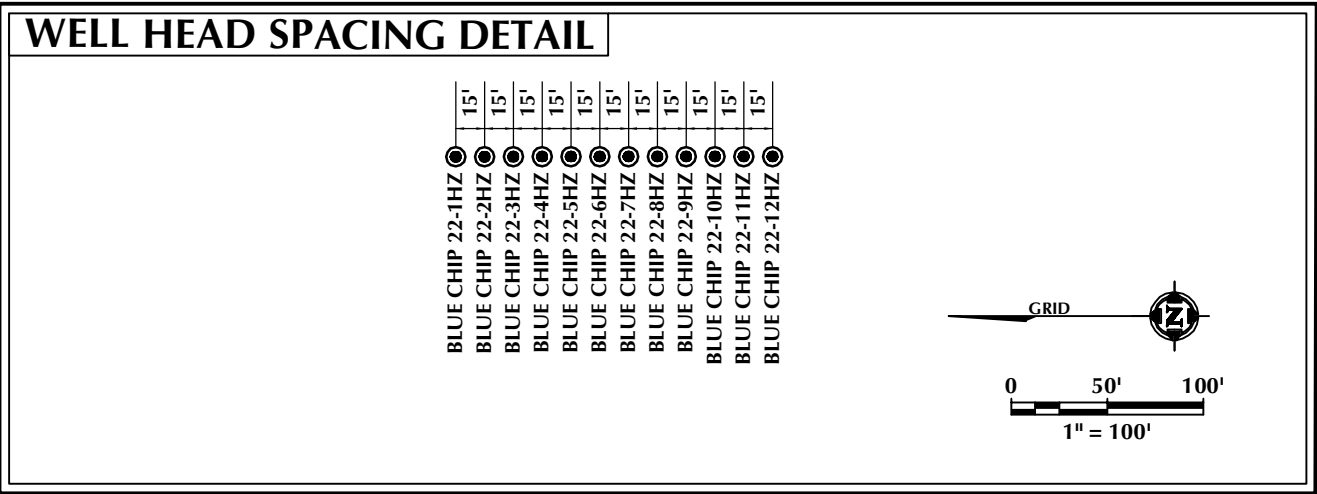
DIRECTIONAL WELL PLAT (COGCC) /
MULTI-WELL PLAN (OGED)
BLUE CHIP 22-1HZ, BLUE CHIP 22-2HZ,
BLUE CHIP 22-3HZ, BLUE CHIP 22-4HZ,
BLUE CHIP 22-5HZ, BLUE CHIP 22-6HZ,
BLUE CHIP 22-7HZ, BLUE CHIP 22-8HZ,
BLUE CHIP 22-9HZ, BLUE CHIP 22-10HZ,
BLUE CHIP 22-11HZ & BLUE CHIP 22-12HZ
LOCATED IN SECTIONS 20, 21, 22 & 23
T5N, R67W, 6TH P.M.
WELD COUNTY, COLORADO

DRAFTED BY:	SJM	CHECKED BY:	RKF	SHEET NO:
DATE DRAFTED:	1/31/22	DATE SURVEYED:	8/18/21	1A
REVISED:		FILE NAME:	20-128	1A OF 1

DIRECTIONAL WELL PLAT (COGCC) / MULTI-WELL PLAN (OGED)
SECTIONS 20, 21, 22 & 23, T5N, R67W

WELL NOTES:
BLUE CHIP 22-1HZ
SURFACE HOLE LOCATION: 1478' FNL, 2180' FWL (SEC. 22)
HEEL LOCATION: 221' FNL, 95' FEL (SEC. 22)
BOTTOM HOLE LOCATION: 220' FNL, 95' FWL (SEC. 21)
BLUE CHIP 22-2HZ
SURFACE HOLE LOCATION: 1493' FNL, 2180' FWL (SEC. 22)
HEEL LOCATION: 698' FNL, 145' FEL (SEC. 22)
BOTTOM HOLE LOCATION: 656' FNL, 145' FWL (SEC. 21)
BLUE CHIP 22-3HZ
SURFACE HOLE LOCATION: 1508' FNL, 2180' FWL (SEC. 22)
HEEL LOCATION: 1057' FNL, 95' FEL (SEC. 22)
BOTTOM HOLE LOCATION: 1080' FNL, 95' FWL (SEC. 21)
BLUE CHIP 22-4HZ
SURFACE HOLE LOCATION: 1523' FNL, 2180' FWL (SEC. 22)
HEEL LOCATION: 1528' FNL, 145' FEL (SEC. 22)
BOTTOM HOLE LOCATION: 1469' FNL, 145' FWL (SEC. 21)
BLUE CHIP 22-5HZ
SURFACE HOLE LOCATION: 1538' FNL, 2180' FWL (SEC. 22)
HEEL LOCATION: 1900' FNL, 95' FEL (SEC. 22)
BOTTOM HOLE LOCATION: 1848' FNL, 95' FWL (SEC. 21)
BLUE CHIP 22-6HZ
SURFACE HOLE LOCATION: 1553' FNL, 2180' FWL (SEC. 22)
HEEL LOCATION: 2305' FNL, 145' FEL (SEC. 22)
BOTTOM HOLE LOCATION: 2267' FNL, 145' FWL (SEC. 21)

BLUE CHIP 22-7HZ
SURFACE HOLE LOCATION: 1568' FNL, 2180' FWL (SEC. 22)
HEEL LOCATION: 2372' FSL, 1859' FEL (SEC. 22)
BOTTOM HOLE LOCATION: 2344' FSL, 95' FWL (SEC. 20)
BLUE CHIP 22-8HZ
SURFACE HOLE LOCATION: 1583' FNL, 2179' FWL (SEC. 22)
HEEL LOCATION: 1949' FSL, 990' FEL (SEC. 22)
BOTTOM HOLE LOCATION: 1975' FSL, 145' FWL (SEC. 20)
BLUE CHIP 22-9HZ
SURFACE HOLE LOCATION: 1598' FNL, 2179' FWL (SEC. 22)
HEEL LOCATION: 1571' FSL, 1596' FEL (SEC. 22)
BOTTOM HOLE LOCATION: 1600' FSL, 95' FWL (SEC. 20)
BLUE CHIP 22-10HZ
SURFACE HOLE LOCATION: 1613' FNL, 2179' FWL (SEC. 22)
HEEL LOCATION: 1261' FSL, 1520' FEL (SEC. 22)
BOTTOM HOLE LOCATION: 1142' FSL, 145' FWL (SEC. 20)
BLUE CHIP 22-11HZ
SURFACE HOLE LOCATION: 1628' FNL, 2179' FWL (SEC. 22)
HEEL LOCATION: 803' FSL, 1875' FEL (SEC. 22)
BOTTOM HOLE LOCATION: 823' FSL, 95' FWL (SEC. 20)
BLUE CHIP 22-12HZ
SURFACE HOLE LOCATION: 1643' FNL, 2179' FWL (SEC. 22)
HEEL LOCATION: 470' FSL, 1411' FEL (SEC. 22)
BOTTOM HOLE LOCATION: 470' FSL, 145' FWL (SEC. 20)



WELL PAD - BLUE CHIP 6-22HZ		
DIRECTIONAL WELL PLAT (COGCC) / MULTI-WELL PLAN (OGED) BLUE CHIP 22-1HZ, BLUE CHIP 22-2HZ, BLUE CHIP 22-3HZ, BLUE CHIP 22-4HZ, BLUE CHIP 22-5HZ, BLUE CHIP 22-6HZ, BLUE CHIP 22-7HZ, BLUE CHIP 22-8HZ, BLUE CHIP 22-9HZ, BLUE CHIP 22-10HZ, BLUE CHIP 22-11HZ & BLUE CHIP 22-12HZ LOCATED IN SECTIONS 20, 21, 22 & 23 T5N, R67W, 6TH P.M. WELD COUNTY, COLORADO		
DRAFTED BY:	SJM	CHECKED BY: RKF
DATE DRAFTED:	1/31/22	DATE SURVEYED: 8/18/21
REVISED:		FILE NAME: 20-128

SHEET NO:
1B
1B OF 1

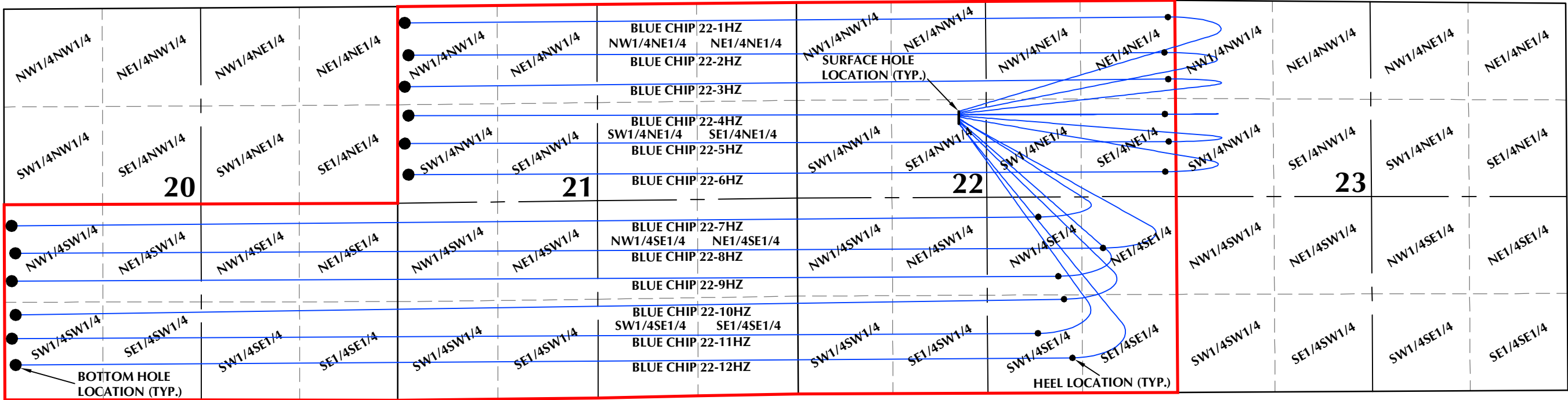


LOVELAND OFFICE
6706 North Franklin Avenue
Loveland, Colorado 80538
Phone 970-776-4331

SHERIDAN OFFICE
1095 Saberton Avenue
Sheridan, Wyoming 82801
Phone 307-674-0609

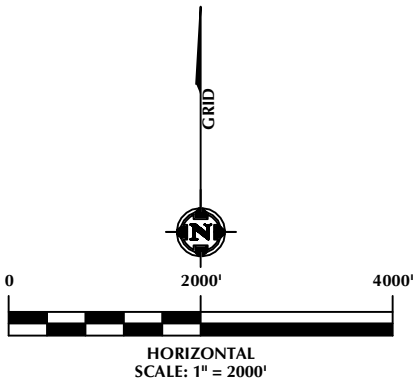
Kerr-McGee Oil &
Gas Onshore LP
1099 18th Street
Denver, Colorado 80202

DIRECTIONAL WELL PLAT (COGCC) / MULTI-WELL PLAN (OGED)
SECTIONS 20, 21, 22 & 23, T5N, R67W



LEGEND:

- DSU BOUNDARY
- WELLBORE TRAJECTORY
- HEEL LOCATION
- BOTTOM HOLE LOCATION



LOVELAND OFFICE
6706 North Franklin Avenue
Loveland, Colorado 80538
Phone 970-776-4331

SHERIDAN OFFICE
1095 Saberton Avenue
Sheridan, Wyoming 82801
Phone 307-674-0609

**Kerr-McGee Oil &
Gas Onshore LP**
1099 18th Street
Denver, Colorado 80202

WELL PAD - BLUE CHIP 6-22HZ

DIRECTIONAL WELL PLAT (COGCC) /
MULTI-WELL PLAN (OGED)
BLUE CHIP 22-1HZ, BLUE CHIP 22-2HZ,
BLUE CHIP 22-3HZ, BLUE CHIP 22-4HZ,
BLUE CHIP 22-5HZ, BLUE CHIP 22-6HZ,
BLUE CHIP 22-7HZ, BLUE CHIP 22-8HZ,
BLUE CHIP 22-9HZ, BLUE CHIP 22-10HZ,
BLUE CHIP 22-11HZ & BLUE CHIP 22-12HZ
LOCATED IN SECTIONS 20, 21, 22 & 23
T5N, R67W, 6TH P.M.
WELD COUNTY, COLORADO

DRAFTED BY:	SJM	CHECKED BY:	RKF	SHEET NO:
DATE DRAFTED:	1/31/22	DATE SURVEYED:	8/18/21	1C
REVISED:		FILE NAME:	20-128	1C OF 1