

Wellhead Closure Checklist

COGCC Rule 911.a.(4) Environmental Site Closure Assessment Field Form

Additional attachments (optional):		Pit Closure		Tank Battery Closure 3-18-22		Flowline Closure 3-21-22		Partially Buried Vault Closure 3-18-22
Site Name & COGCC Facility Number: Date #1		Date: 1-20-22						Remediation Project #: 20270
Associated Wells: 05-123-07790		Age of Site: years						Number of Photos Attached: 1
Location: (GPS coordinates of wellhead or southeastern most wellhead for multiple) 40.119146 / -104.581172							Estimated Facility Size (acres):	
General Condition of Site: (General observations regarding housekeeping, corrosion, waste management, etc.) Good Condition								
USCS Soil Type: CL				Estimated Depth to Groundwater: >20'				
Hydrocarbon Impacted Soils / Spills: (Note estimated size and if impact appears to be surficial or extends to an unknown depth) None observed								
Salt Crusted Soils or Impacted Vegetation: (Note estimated size and if impact appears to be surficial or extends to an unknown depth) None observed								
Wellhead(s)								
Well API	05-123-07790							
Age	Years							
Condition of surface around wellhead	Good- Per Crew							
PID Readings	N/A-Excavated	upon arrival						
Condition of subsurface (staining present)	Good- no staining	no odor						
PID Readings	10.8	9.8	8.2	10.7	11.2			
Sample taken? Location/Sample ID#	WH-SS-01@4'	WH-SS-02@4'	WH-SS-03@4'	WH-SS-04@4'	WH-FS-01@5'			
Photo Number(s)	See photolog							
Other observations regarding wellheads: Riser cut/capped following assessment								
Summary								
Was impacted soil identified? <input checked="" type="radio"/> No Yes - less than 10 cubic yards Yes - more than 10 cubic yards								
Total number of samples field screened: 5				Total number of samples collected: 5				
Highest PID Reading: 11.2				Total number of samples submitted to lab for analysis: 1				
If more than 10 cubic yards of impacted soil were observed:								
Vertical extent:				Estimated spill volume:				
Lateral extent:				Volume of soil removed:				
Is additional investigation required? N/A								
Was groundwater encountered during the investigation? <input checked="" type="radio"/> No Yes - not impacted or in contact with impacted soils Yes - groundwater impacted and/or in contact with impacted soils								
Measured depth to groundwater:				Was remedial groundwater removal conducted? Yes No				
Date Groundwater was encountered:				Commencement date of removal:				
Sheen on groundwater? Yes No				Volume of groundwater removed prior to sampling:				
Free product observed? Yes No				Volume of groundwater removed post sampling:				
Total number of samples collected:				Total Volume of groundwater removed:				
Total number of samples submitted to lab for analysis:								

Flowline Closure Checklist

COGCC Rule 911.a.(4) Environmental Site Closure Assessment Field Form

Additional Attachments:	Tank Battery Closure 3-18-22	Wellhead Closure 1-20-22	Pit Closure	Partially Buried Vault Closure 3-18-22
Site Name & COGCC Facility Number: Dale #1	Date: 3-21-22	Remediation Project #: 20270		
Associated Wells: 05-123-07790	Age of Site: years	Number of Photos Attached: 8		
Starting point: (GPS coordinates and descriptions) At well: 40.119146 / -104.581172				
End point: (GPS coordinates and descriptions) At sep: 40.117391 / -104.581352				
USCS Soil Type: CL		Estimated Depth to Groundwater: > 20'		
Hydrocarbon Impacted Soils / Spills: (Note estimated size and if impact appears to be surficial or extends to an unknown depth) None observed				
Salt Crusted Soils or Impacted Vegetation: (Note estimated size and if impact appears to be surficial or extends to an unknown depth) None observed				
Flowlines				
Flowline type	O, G, W			
Depth	~ 3'			
Age	Years			
Length	~ 650'			
Construction Material	Steel			
Were flowlines pulled?	Yes			
Visual Integrity of lines	Good			
Visual impacts if trenched	None observed			
PID Readings if trenched	5.6	1.9	1.8	0.9
Sample taken? Location/Sample ID#	TB-SS-02 @4'	FL-SS-01 @4'	FL-SS-02 @4'	FL-SS-03 @4'
Photo Number(s)	See photolog			
Other observations regarding on location flowlines: Terminus / Pt. B at sep collected during facility decomm. (TB-SS-02) associated with Rem. # 20272 7 cut points/bellholes field screened				
Summary				
Was impacted soil identified? <input checked="" type="radio"/> No Yes - less than 10 cubic yards Yes - more than 10 cubic yards				
Total number of samples field screened: 8		Total number of samples collected: 8		
Highest PID Reading: 5.6		Total number of samples submitted to lab for analysis: 1		
If more than 10 cubic yards of impacted soil were observed:				
Vertical extent:		Estimated spill volume:		
Lateral extent:		Volume of soil removed:		
Is additional investigation required? N/A				
Was groundwater encountered during the investigation? <input checked="" type="radio"/> No Yes - not impacted or in contact with impacted soils Yes - groundwater impacted and/or in contact with impacted soils				
Measured depth to groundwater:		Was remedial groundwater removal conducted? Yes No		
Date Groundwater was encountered:		Commencement date of removal:		
Shoen on groundwater? Yes No		Volume of groundwater removed prior to sampling:		
Free product observed? Yes No		Volume of groundwater removed post sampling:		
Total number of samples collected:		Total Volume of groundwater removed:		
Total number of samples submitted to lab for analysis:				



FIGURES

Figure 1: Topographic Site Location Map

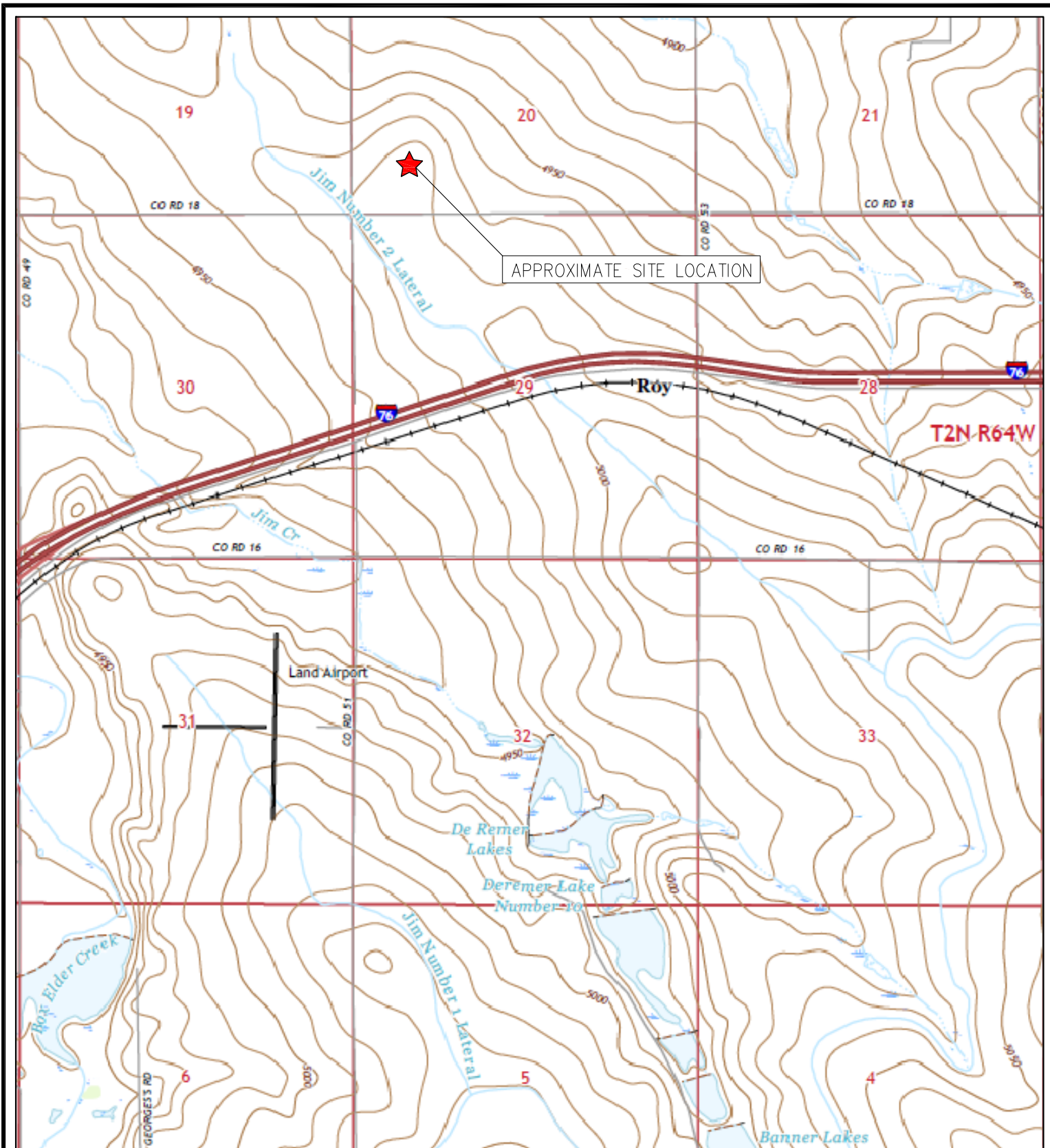
Figure 2: Aerial Site Location Map

Figure 3: Soil Analytical Map

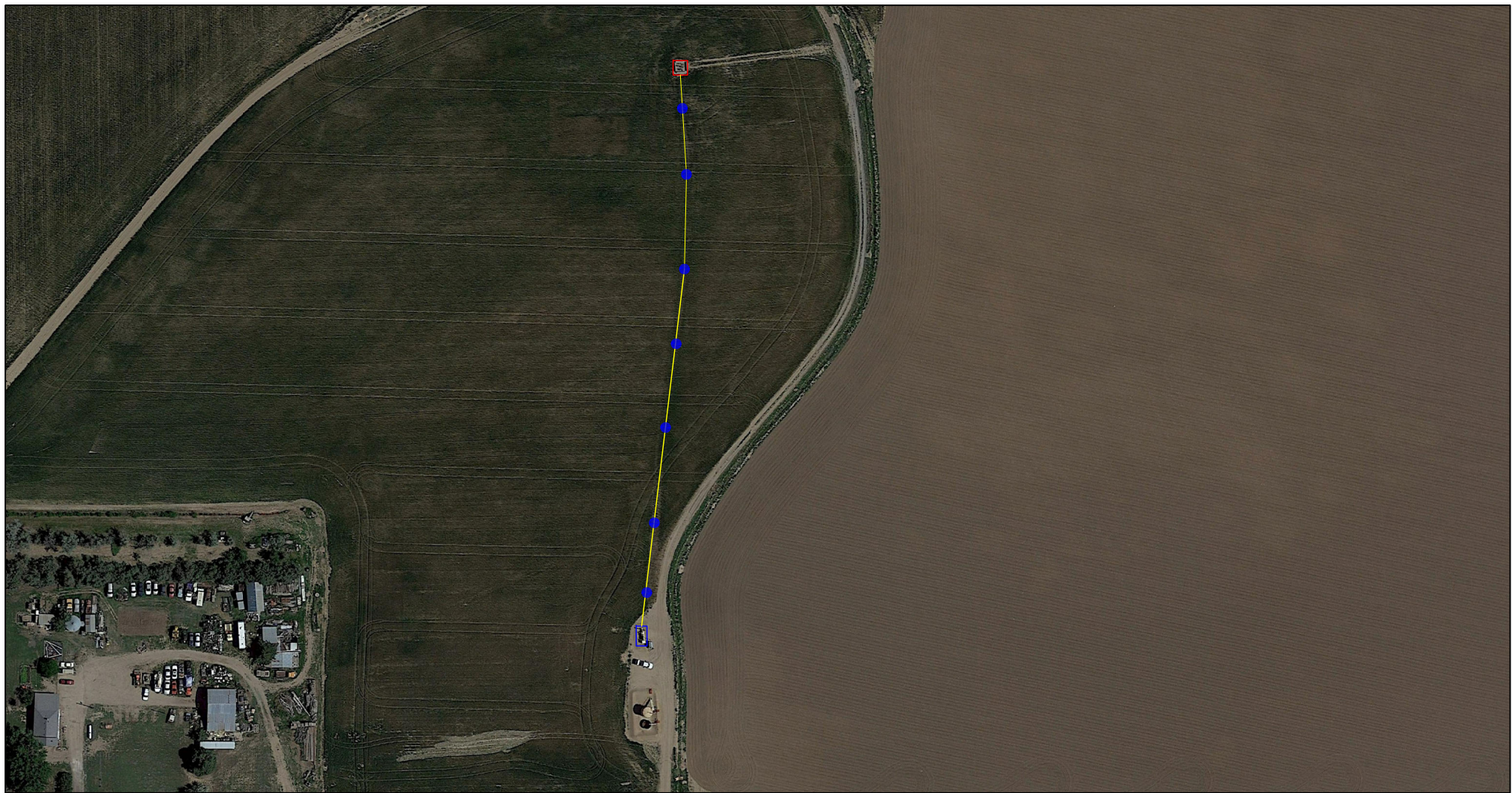
Figure 4: Polycyclic Aromatic Hydrocarbons Map

Figure 5: Soil Analytical Map (Flowline Terminus/Pt. B)

Figure 6: Polycyclic Aromatic Hydrocarbons Map (Flowline Terminus/Pt. B)

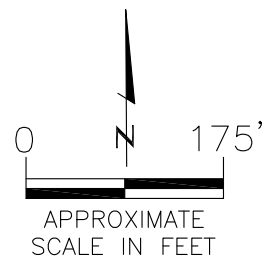


	<p>TOPOGRAPHIC SITE LOCATION MAP DALE #1 CLOSURE ASSESSMENT 40.119146 / -104.581172 SW¼ SW¼ SEC.20 T2N R64W 6PM WELD COUNTY, COLORADO API # 05-123-07790 REMEDIATION # 20270</p>	<div data-bbox="954 1780 1185 1990" data-label="Image"> </div> <div data-bbox="1214 1780 1518 1942" data-label="Text"> <p>EAGLE ENVIRONMENTAL CONSULTING, INC.</p> </div> <div data-bbox="1214 1942 1518 1995" data-label="Text"> <p>8000 W 44th Ave, Wheat Ridge, CO 80033 Ph: 303-433-0479 • F: 303-325-5449</p> </div>
	<p>SOURCE: USGS 7.5 MINUTE TOPOGRAPHIC MAP KEENESBURG, CO QUADRANGLE 2022</p>	



LEGEND

- FORMER DALE #1 WELLHEAD (PLUGGED AND ABANDONED)
- ASSOCIATED SEPARATOR
- APPROXIMATE FLOWLINE LOCATION (REMOVED)
- APPROXIMATE BELLHOLE/CUT POINT LOCATIONS – FIELD SCREENED



AERIAL SITE LOCATION MAP

DALE #1
CLOSURE ASSESSMENT
40.119146 / -104.581172
SW¼ SW¼ SEC.20 T2N R64W 6PM
WELD COUNTY, COLORADO
API # 05-123-07790
REMEDATION # 20270

DATE: 07/22/22

FIG. NO.
2

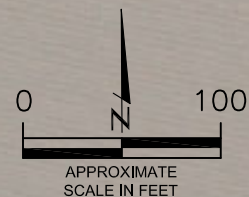
DRAWN BY:
BVH



EAGLE
ENVIRONMENTAL
CONSULTING, INC.
8000 W 44th Ave., Wheat Ridge, CO 80033
Ph: 303-433-0479 • F: 303-325-5449

WH-FS-01@5'
 01/20/22
 5'
 B = <0.00200
 T = <0.00200
 E = <0.00200
 X = <0.00200
 G = <0.200
 D = <25.0
 R = <100
 1,2,4-TMB = <0.00200
 1,3,5-TMB = <0.00200
 Brn= 0.811
 EC = 0.682
 SAR= 1.16
 pH = 8.08

WH-SS-01
 WH-FS-01
 WH-SS-02
 WH-SS-03
 WH-SS-04
 FL-SS-01
 FL-SS-02
 FL-SS-03
 FL-SS-04
 FL-SS-05
 FL-SS-06
 FL-SS-07



LEGEND

- INITIAL ASSESSMENT BOUNDARIES
- APPROXIMATE FLOWLINE LOCATION (REMOVED)
- SS-02 APPROXIMATE LOCATION OF SOIL SAMPLES FIELD SCREENED, ONLY, WITH PHOTOIONIZATION DETECTOR
- SS-02 APPROXIMATE LOCATION OF SOIL SAMPLES SUBMITTED FOR LABORATORY ANALYSIS

PARAMETERS

SAMPLE LOCATION
 DATE
 DEPTH (FEET)
 B = BENZENE (mg/kg)
 T = TOLUENE (mg/kg)
 E = ETHYLBENZENE (mg/kg)
 X = TOTAL XYLENES (mg/kg)
 G = TPH-GRO (mg/kg)
 D = TPH-DRO (mg/kg)
 R = TPH-RRO (mg/kg)
 1,2,4-TMB = 1,2,4 TRIMETHYLBENZENE (mg/kg)
 1,3,5-TMB = 1,3,5 TRIMETHYLBENZENE (mg/kg)
 Brn= BORON (mg/L)
 EC = SPECIFIC CONDUCTANCE (mmhos/cm)
 SAR= SODIUM ADSORPTION RATIO
 pH = pH (pH UNITS)

mg/kg = MILLIGRAMS PER KILOGRAM
 mg/L = MILLIGRAMS PER LITER
 mmhos/cm = MILLIMHOS PER CENTIMETER

TPH-GRO = TOTAL PETROLEUM HYDROCARBONS - GASOLINE RANGE ORGANICS
 TPH-DRO = TOTAL PETROLEUM HYDROCARBONS - DIESEL RANGE ORGANICS
 TPH-RRO = TOTAL PETROLEUM HYDROCARBONS - RESIDUAL RANGE ORGANICS

NOTES:
 VALUES PRESENTED WITH A LESS THAN SYMBOL (<) DID NOT CONTAIN CONCENTRATIONS AT OR ABOVE LABORATORY DETECTION LIMITS

VALUES PRESENTED IN **BOLD** VALUES CONTAIN CONCENTRATIONS THAT EXCEED COGCC TABLE 915-1 REGULATORY LIMITS FOR THAT COMPOUND.

COGCC = COLORADO OIL AND GAS CONSERVATION COMMISSION

SOIL ANALYTICAL MAP
 DALE #1
 CLOSURE ASSESSMENT
 40.119146 / -104.581172
 SW¼ SW¼ SEC.20 T2N R64W 6PM
 WELD COUNTY, COLORADO
 API # 05-123-07790
 REMEDIATION # 20270

DATE:
 07/27/22

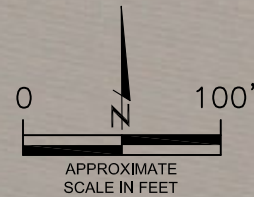
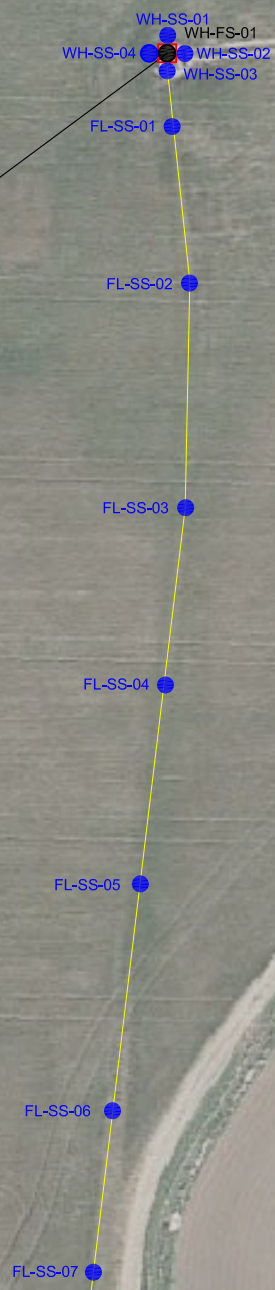
DRAWN BY:
 ER

FIG.
 NO. 3



EAGLE
 ENVIRONMENTAL
 CONSULTING, INC.
 8000 W 44th Ave, Wheat Ridge, CO 80033
 Ph: 303-433-0479 • F: 303-325-5449

WH-FS-01@5'
 01/20/22
 5'
 ND = <0.00067
 1-Methylnaphthalene = 0.000446
 2-Methylnaphthalene = 0.000663
 Acenaphthene = ND
 Anthracene = ND
 Benzo(a)anthracene = ND
 Benzo(a)pyrene = ND
 Benzo(b)fluoranthene = ND
 Benzo(k)fluoranthene = ND
 Chrysene = ND
 Dibenzo(a,h)anthracene = ND
 Fluoranthene = ND
 Fluorene = 0.000286
 Indeno(1,2,3-CD)pyrene = ND
 Naphthalene = ND
 Pyrene = ND



LEGEND

- INITIAL ASSESSMENT BOUNDARIES
- APPROXIMATE FLOWLINE LOCATION (REMOVED)
- SS-02 APPROXIMATE LOCATION OF SOIL SAMPLES FIELD SCREENED, ONLY, WITH PHOTOIONIZATION DETECTOR
- SS-01 APPROXIMATE LOCATION OF SOIL SAMPLES SUBMITTED FOR LABORATORY ANALYSIS

PARAMETERS

SAMPLE LOCATION
 DATE SAMPLE COLLECTED
 APPROXIMATE DEPTH

POLYCYCLIC AROMATIC HYDROCARBONS (PAHs)

NOTE:
 CONCENTRATIONS PRESENTED IN mg/kg

mg/kg = MILLIGRAMS PER KILOGRAM

ND = NON-DETECT

NOTE:
 VALUES PRESENTED WITH A LESS THAN SYMBOL (<) DID NOT
 CONTAIN CONCENTRATIONS AT OR ABOVE LABORATORY
 DETECTION LIMITS

VALUES PRESENTED IN **BOLD** VALUES CONTAIN
 CONCENTRATIONS EXCEEDING COGCC TABLE 915-1
 REGULATORY LIMITS.

COGCC = COLORADO OIL AND GAS CONSERVATION COMMISSION

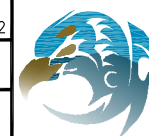
POLYCYCLIC AROMATIC HYDROCARBONS MAP

DALE #1
 CLOSURE ASSESSMENT
 40.119146 / -104.581172
 SW¼ SW¼ SEC.20 T2N R64W 6PM
 WELD COUNTY, COLORADO
 API # 05-123-07790
 REMEDIATION # 20270

DATE:
 07/27/22

DRAWN BY:
 ER

FIG.
 NO. 4



EAGLE
 ENVIRONMENTAL
 CONSULTING, INC.
 8000 W 44th Ave, Wheat Ridge, CO 80033
 Ph: 303-433-0479 • F: 303-325-5449



TB-SS-02@4'
 03/18/22
 4'
 B = <0.00200
 T = <0.00200
 E = <0.00200
 X = <0.00200
 G = <0.200
 D = <25.0
 R = <100
 1,2,4-TMB = <0.00200
 1,3,5-TMB = <0.00200
 Brn = 0.278
 EC = 0.484
 SAR = 0.213
 pH = 7.66

LEGEND

● APPROXIMATE LOCATION OF SOIL SAMPLES
 SUBMITTED FOR LABORATORY ANALYSIS

*SAMPLE COLLECTED DURING FACILITY DECOMMISSIONING
 ACTIVITIES ASSOCIATED WITH REMEDIATION # 20272

PARAMETERS

SAMPLE LOCATION
 DATE
 DEPTH (FEET)
 B = BENZENE (mg/kg)
 T = TOLUENE (mg/kg)
 E = ETHYLBENZENE (mg/kg)
 X = TOTAL XYLENES (mg/kg)
 G = TPH-GRO (mg/kg)
 D = TPH-DRO (mg/kg)
 R = TPH-RRO (mg/kg)
 1,2,4-TMB = 1,2,4 TRIMETHYLBENZENE (mg/kg)
 1,3,5-TMB = 1,3,5 TRIMETHYLBENZENE (mg/kg)
 Brn = BORON (mg/L)
 EC = SPECIFIC CONDUCTANCE (mmhos/cm)
 SAR = SODIUM ADSORPTION RATIO
 pH = pH (pH UNITS)

mg/kg = MILLIGRAMS PER KILOGRAM
 mg/L = MILLIGRAMS PER LITER
 mmhos/cm = MILLIMHOS PER CENTIMETER

TPH-GRO = TOTAL PETROLEUM HYDROCARBONS - GASOLINE
 RANGE ORGANICS
 TPH-DRO = TOTAL PETROLEUM HYDROCARBONS - DIESEL
 RANGE ORGANICS
 TPH-RRO = TOTAL PETROLEUM HYDROCARBONS - RESIDUAL
 RANGE ORGANICS

NOTES:
 VALUES PRESENTED WITH A LESS THAN SYMBOL (<) DID NOT
 CONTAIN CONCENTRATIONS AT OR ABOVE LABORATORY
 DETECTION LIMITS

VALUES PRESENTED IN **BOLD** VALUES CONTAIN
 CONCENTRATIONS THAT EXCEED COGCC TABLE 915-1
 REGULATORY LIMITS FOR THAT COMPOUND.

COGCC = COLORADO OIL AND GAS CONSERVATION
 COMMISSION

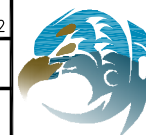
SOIL ANALYTICAL MAP (FLOWLINE TERMINUS/PT. B)

DALE #1
 CLOSURE ASSESSMENT
 40.119146 / -104.581172
 SW¼ SW¼ SEC.20 T2N R64W 6PM
 WELD COUNTY, COLORADO
 API # 05-123-07790
 REMEDIATION # 20270

DATE:
 07/28/22

DRAWN BY:
 GEC

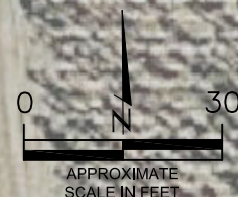
FIG.
 NO. 5



EAGLE
 ENVIRONMENTAL
 CONSULTING, INC.
 8000 W 44th Ave, Wheat Ridge, CO 80033
 Ph: 303-433-0479 • F: 303-325-5449

TB-SS-04@4'
 03/18/22
 4'
 ND = <0.00067
 1-Methylnaphthalene = 0.00503
 2-Methylnaphthalene = 0.00111
 Acenaphthene = ND
 Anthracene = ND
 Benzo(a)anthracene = 0.000656
 Benzo(a)pyrene = 0.000992
 Benzo(b)fluoranthene = 0.00135
 Benzo(k)fluoranthene = ND
 Chrysene = 0.000846
 Dibenzo(a,h)anthracene = ND
 Fluoranthene = 0.00113
 Fluorene = ND
 Indeno(1,2,3-CD)pyrene = ND
 Naphthalene = 0.000496
 Pyrene = 0.00114

TB-SS-02



LEGEND

● APPROXIMATE LOCATION OF SOIL SAMPLES
 SUBMITTED FOR LABORATORY ANALYSIS

*SAMPLE COLLECTED DURING FACILITY DECOMMISSIONING
 ACTIVITIES ASSOCIATED WITH REMEDIATION # 20272

PARAMETERS

SAMPLE LOCATION
 DATE SAMPLE COLLECTED
 APPROXIMATE DEPTH

POLYCYCLIC AROMATIC HYDROCARBONS (PAHs)

NOTE:
 CONCENTRATIONS PRESENTED IN mg/kg

mg/kg = MILLIGRAMS PER KILOGRAM

ND = NON-DETECT

NOTE:
 VALUES PRESENTED WITH A LESS THAN SYMBOL (<) DID NOT
 CONTAIN CONCENTRATIONS AT OR ABOVE LABORATORY
 DETECTION LIMITS

VALUES PRESENTED IN **BOLD** VALUES CONTAIN
 CONCENTRATIONS EXCEEDING COGCC TABLE 915-1
 REGULATORY LIMITS.

COGCC = COLORADO OIL AND GAS CONSERVATION COMMISSION

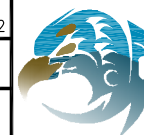
POLYCYCLIC AROMATIC HYDROCARBONS MAP (FLOWLINE TERMINUS/PT. B.)

DALE #1
 CLOSURE ASSESSMENT
 40.119146 / -104.581172
 SW¼ SW¼ SEC.20 T2N R64W 6PM
 WELD COUNTY, COLORADO
 API # 05-123-07790
 REMEDIATION # 20270

DATE:
 07/28/22

DRAWN BY:
 GEC

FIG.
 NO. 6



EAGLE
 ENVIRONMENTAL
 CONSULTING, INC.
 8000 W 44th Ave, Wheat Ridge, CO 80033
 Ph: 303-433-0479 • F: 303-325-5449



TABLES

Table 1: Photoionization Detector Reading Summary

Table 2: Soil Analytical Results Summary

Table 3: Polycyclic Aromatic Hydrocarbons Analytical Results Summary

TABLE 1
 PHOTOIONIZATION DETECTOR READING SUMMARY
 DALE #1
 CLOSURE ASSESSMENT
 40.119146 / -104.581172
 SW1/4 SW1/4 SEC.20 T2N R64W 6PM
 WELD COUNTY, COLORADO
 API # 05-123-07790
 REMEDIATION # 20270

Sample Location (Latitude/Longitude)	Date	Approximate Depth (feet)	PID Reading (ppm-v)	Lab Submission (Y/N)
WH-SS-01 @ 4' (40.119165 / -104.581194)	01/20/22	4	10.8	N
WH-SS-02 @ 4' (40.119150 / -104.581181)	01/20/22	4	9.8	N
WH-SS-03 @ 4' (40.119140 / -104.581194)	01/20/22	4	8.2	N
WH-SS-04 @ 4' (40.119150 / -104.581205)	01/20/22	4	10.7	N
WH-FS-01 @ 5' (40.119150 / -104.581194)	01/20/22	5	11.2	Y
*TB-SS-02 @ 4' (40.117636 / -104.581349)	03/18/22	4	5.6	Y
FL-SS-01 @ 4' (40.119026 / -104.581168)	03/21/22	4	1.9	N
FL-SS-02 @ 4' (40.118804 / -104.581179)	03/21/22	4	1.8	N
FL-SS-03 @ 4' (40.118687 / -104.581182)	03/21/22	4	0.9	N
FL-SS-04 @ 4' (40.118466 / -104.581208)	03/21/22	4	1.2	N
FL-SS-05 @ 4' (40.118179 / -104.581246)	03/21/22	4	1.4	N
FL-SS-06 @ 4' (40.117795 / -104.581296)	03/21/22	4	1.0	N
FL-SS-07 @ 4' (40.117399 / -104.581343)	03/21/22	4	2.1	N
(Y/N) = Yes or No ppm-v = parts per million by volume PID = Photoionization Detector				
*Sample collected during facility decommissioning activities associated with Rem. # 20272				

TABLE 2
SOIL ANALYTICAL RESULTS SUMMARY
DALE #1
CLOSURE ASSESSMENT
40.119146 / -104.581172
SW1/4 SW1/4 SEC.20 T2N R64W 6PM
WELD COUNTY, COLORADO
API # 05-123-07790
REMEDATION # 20270

Sample Location (Latitude/Longitude)	Date	Approximate Depth (feet)	PID Reading (ppm-v)	Benzene (mg/kg)	Toluene (mg/kg)	Ethylbenzene (mg/kg)	Total Xylenes (mg/kg)	TPH-GRO (mg/kg)	TPH-DRO (mg/kg)	TPH-RRO (mg/kg)	1,2,4-TMB (mg/kg)	1,3,5-TMB (mg/kg)	Boron (mg/L)	Specific Conductance (mmhos/cm)	pH (pH units)	SAR
COGCC Table 915-1 Residential Screening Levels (mg/kg)				1.20	490	5.8	58	500			30	27	2	<4	6-8.3	<6
COGCC Table 915-1 Protection of Groundwater Soil Screening Levels				0.0026	0.69	0.78	9.9	--			0.0081	0.0087	--	--	--	--
WH-FS-01 @ 5' (40.119150 / -104.581194)	01/20/22	5	11.2	<0.00200	<0.00200	<0.00200	<0.00200	<0.200	<25.0	<100	<0.00200	<0.00200	0.811	0.682	8.08	1.16
*TB-SS-02 @ 4' (40.117636 / -104.581349)	03/18/22	4	5.6	<0.00200	<0.00200	<0.00200	<0.00200	<0.200	<25.0	<100	<0.00200	<0.00200	0.278	0.484	7.66	0.213
COGCC = Colorado Oil and Gas Conservation Commission mg/kg = milligrams per kilogram mmhos/cm = millimhos per centimeter PID = Photoionization Detector ppm-v = parts per million by volume mg/L = milligrams per liter SAR = Sodium Adsorption Ratio Note: Values presented with a less than symbol (<) did not contain concentrations at or above the laboratory MDL and/or reporting limit. Note: Values presented in BOLD contained concentrations exceeding COGCC Table 915-1 Regulatory Limits																
TPH-GRO = Total Petroleum Hydrocarbons - Gasoline Range Organics TPH-DRO = Total Petroleum Hydrocarbons - Diesel Range Organics TPH-RRO = Total Petroleum Hydrocarbons - Residual Range Organics								*Sample collected during facility decommissioning activities associated with Rem. # 20272 1,2,4-TMB = 1,2,4-Trimethlybenzene 1,3,5-TMB = 1,3,5-Trimethlybenzene MDL = Minimum Detection Limits								

TABLE 3
POLYCYCLIC AROMATIC HYDROCARBONS ANALYTICAL RESULTS SUMMARY
DALE #1
CLOSURE ASSESSMENT
40.119146 / -104.581172
SW1/4 SW1/4 SEC.20 T2N R64W 6PM
WELD COUNTY, COLORADO
API # 05-123-07790
REMEDATION # 20270

Sample Location (Latitude/Longitude)	Date	Approximate Depth (feet)	PID Reading (ppm-v)	1-Methyl- naphthalene (mg/kg)	2-Methyl- naphthalene (mg/kg)	Acenaphthene (mg/kg)	Anthracene (mg/kg)	Benzo(a)-anthracene (mg/kg)	Benzo(a)- pyrene (mg/kg)	Benzo(b)- fluoranthene (mg/kg)	Benzo(k)- fluoranthene (mg/kg)	Chrysene (mg/kg)	Dibenzo(a,h)- anthracene (mg/kg)	Fluoranthene (mg/kg)	Fluorene (mg/kg)	Indeno(1,2,3- cd)-pyrene (mg/kg)	Naphthalene (mg/kg)	Pyrene (mg/kg)
COGCC Table 915-1 Residential Screening Levels				18	24	360	1,800	1.1	0.11	1.1	11	110	0.11	240	240	1.1	2	180
COGCC Table 915-1 Protection of Groundwater Soil Screening Levels				0.006	0.019	0.55	5.8	0.011	0.24	0.3	2.9	9	0.096	8.9	0.54	0.98	0.0038	1.3
WH-FS-01 @ 5' (40.119150 / -104.581194)	01/20/22	5	11.2	0.000446	0.000663	<0.00067	<0.00067	<0.00067	<0.00067	<0.00067	<0.00067	<0.00067	<0.00067	<0.00067	0.000286	<0.00067	<0.00067	<0.00067
*TB-SS-02 @ 4' (40.117636 / -104.581349)	03/18/22	4	5.6	0.000503	0.00111	<0.00067	<0.00067	0.000656	0.000992	0.00135	<0.00067	0.000846	<0.00067	0.00113	<0.00067	<0.00067	0.000496	0.00114
COGCC = Colorado Oil and Gas Conservation Commission PID = Photoionization Detector *Sample collected during facility decommissioning activities associated with Rem. # 20272 mg/kg = milligrams per kilogram ppm-v = parts per million by volume MDL - Minimum Detection Limit Note: Values presented with a less than symbol (<) did not contain concentrations at or above the laboratory MDL and/or reporting limit. Note: Values presented in BOLD contained concentrations exceeding COGCC Table 915-1 Regulatory Limits																		



ATTACHMENT A

Photo Log

Dale #1

API # 05-123-07790

Remediation # 20270

Closure Assessment

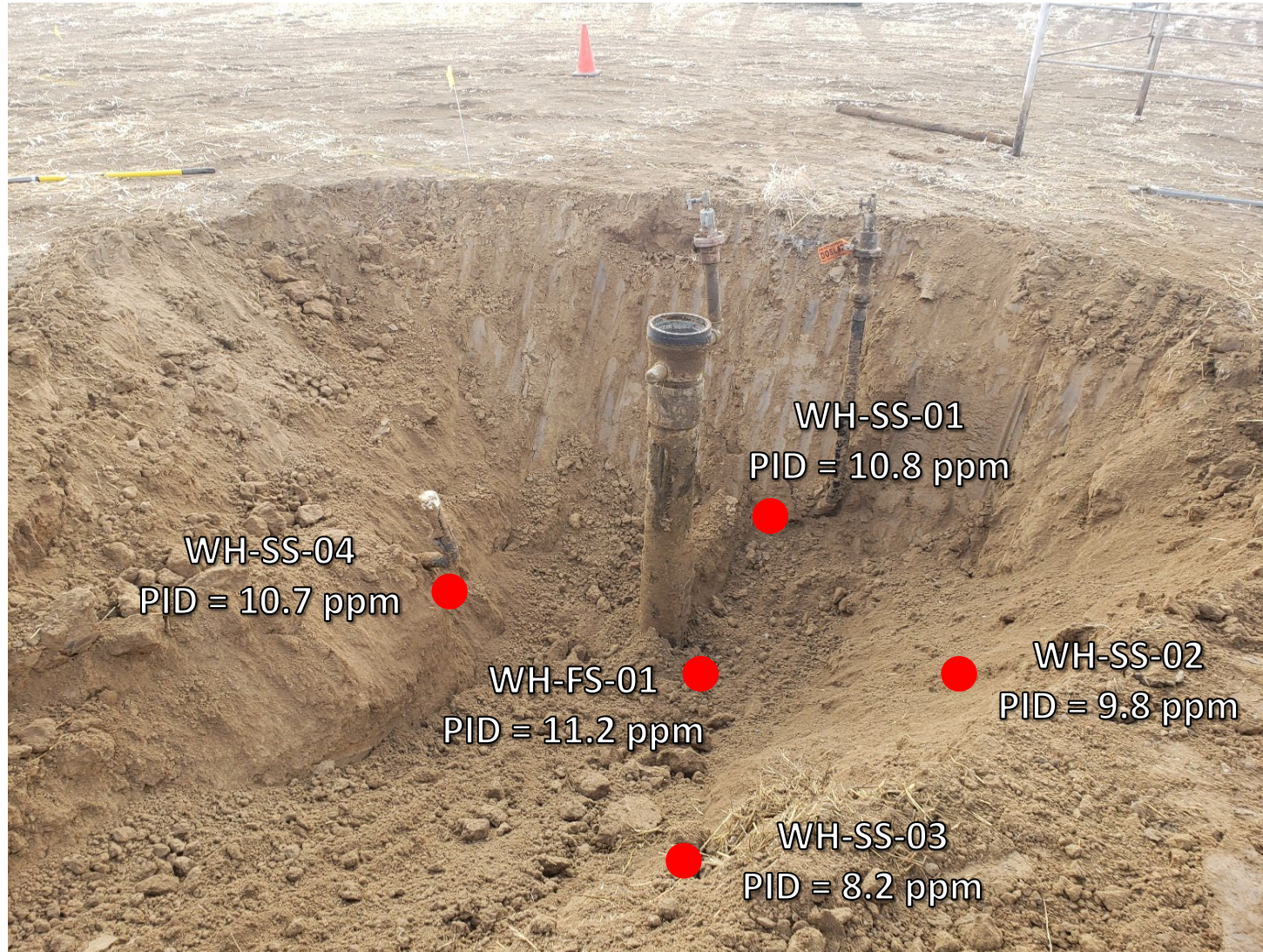
January - March 2022



EAGLE
ENVIRONMENTAL
CONSULTING, INC.
8000 W 44th Ave, Wheat Ridge, CO 80033
Ph: 303-433-0479 • F: 303-325-5449



Wellhead Excavation – 1/20/22



Looking north

No petroleum hydrocarbon staining or odor observed

Tank Battery Decommissioning – 3/18/22

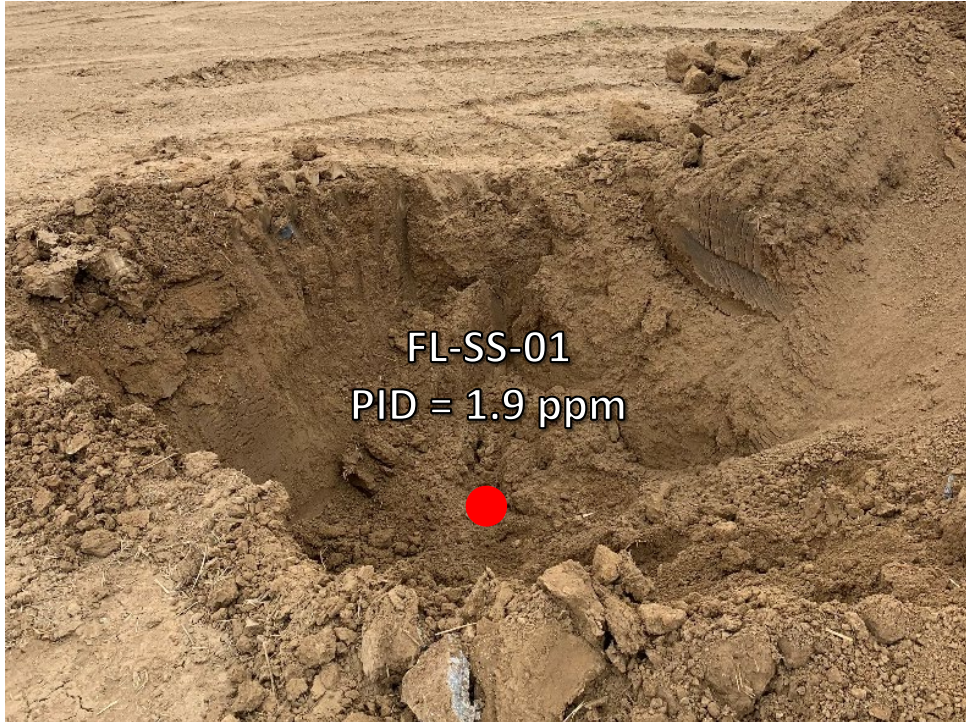


Looking northeast at flowline terminus/Pt. B (at separator)

Sample collected during facility decommissioning activities associated with Rem. # 20272

No petroleum hydrocarbon staining or odor observed

Flowline Assessment – 3/21/22



Looking south at bellholes/cut points – field screened only

No petroleum hydrocarbon staining or odor observed

Flowline Assessment – 3/21/22



Looking south at bellholes/cut points – field screened only

No petroleum hydrocarbon staining or odor observed

Flowline Assessment – 3/21/22



Looking south at bellholes/cut points – field screened only

No petroleum hydrocarbon staining or odor observed

Flowline Assessment – 3/21/22



Looking south at bellholes/cut points – field screened only

No petroleum hydrocarbon staining or odor observed



ATTACHMENT B

Laboratory Analytical Reports*

***Flowline Terminus/Pt. B sample collected during decommissioning activities associated with Rem. # 20272.**

Sample included on lab report for battery – See TB-SS-02@4'



February 07, 2022

Eagle Environmental Consulting, Inc.

Martin C Eckert III

8000 W 44th Ave

Wheat Ridge CO 80033

Project Name - Noble - Dale #1

Project Number - [none]

Attached are your analytical results for Noble - Dale #1 received by Origins Laboratory, Inc. January 20, 2022. This project is associated with Origins project number Y201392-01.

The analytical results in the following report were analyzed under the guidelines of EPA Methods. These methods are identified as follows; "SW" are defined in SW-846, "EPA" are defined in 40CFR part 136 and "SM" are defined in the most current revision of Standard Methods For the Examination of Water and Wastewater.

The analytical results apply specifically to the samples and analyses specified per the attached Chain of Custody. As such, this report shall not be reproduced except in full, without the written approval of Origin's laboratory.

Unless otherwise noted, the analytical results for all soil samples are reported on a wet weight basis. All analytical analyses were performed under NELAP guidelines unless noted by a data qualifier.

Any holding time exceedances, deviations from the method specifications or deviations from Origins Laboratory's Standard Operating Procedures are outlined in the case narrative.

Thank you for selecting Origins for your analytical needs. Please contact us with any questions concerning this report, or if we can help with anything at all.

Origins Laboratory, Inc.
303.433.1322
o-squad@oelabinc.com



1725 Elk Place, Denver, CO 80211 | Phone: 303.433.1322 | Fax: 303.265.9645

Eagle Environmental Consulting, Inc.

8000 W 44th Ave

Wheat Ridge CO 80033

Martin C Eckert III

Project Number: [none]

Project: Noble - Dale #1

CROSS REFERENCE REPORT

Sample ID	Laboratory ID	Matrix	Date Sampled	Date Received
WH-FS-01@5'	Y201392-01	Soil	January 20, 2022 14:56	01/20/2022 15:55

Origins Laboratory, Inc.



The results in this report apply to the samples analyzed in accordance with the chain of custody document. This analytical report must be reproduced in its entirety.

Martin C Eckert III
Project Number: [none]
Project: Noble - Dale #1

ORIGINS

LABORATORY, INC

www.originslaboratory.com

page 1 of 1

Client: Eagle Environmental Consulting
 Address: 8000 W 24th Ave
West Ridge, CO 80033
 Telephone Number: 303-433-0474
 Email Address: mce303cyle-eau10.com

Fax: 303.265.9645

Phone: 303.433.1322

Denver, CO 80211

1725 Elk Place

Sample ID Description	Date Sampled	Time Sampled	# of Containers	Preservative				Matrix		Analysis	Sample Instructions
				Unpreserved	HCl	HNO ₃	Other	Groundwater	Soil		
VH-FS-01051	01-20-22	1456	2	X					X		EC SAR, pH =
											Standard Paste Pkg
Relinquished By: <u>Travis Cople</u>	Date: <u>01-20-22</u>	Time: <u>1555</u>	Received By: <u>EH</u>				Date: <u>1/20/22</u>	Time: <u>1555</u>	Turnaround Time: Same Day <input type="checkbox"/> 24 Hr <input type="checkbox"/> 48 Hr <input type="checkbox"/> 72 Hr <input checked="" type="checkbox"/> Standard		
Relinquished By:	Date:	Time:	Received By:				Date:	Time:			

Bill to Cole

Temp Received: 3.1

Date Results Needed ☒ Noble

Origins Laboratory, Inc.

Intent

The results in this report apply to the samples analyzed in accordance with the chain of custody document. This analytical report must be reproduced in its entirety.

Eagle Environmental Consulting, Inc.
8000 W 44th Ave
Wheat Ridge CO 80033

Martin C Eckert III
Project Number: [none]
Project: Noble - Dale #1

Origins Laboratory

Sample Receipt Checklist

F-012207-01-R1
Effective Date: 01/09/12

Origins Work Order: Y201392

Client: Eagle
Client Project ID: Dale #1

Checklist Completed by: SG

Shipped Via: HD
(UPS, FedEx, Hand Delivered, Pick-up, etc.)

Date/time completed: 1/21/22

Airbill #: N/A

Matrix(s) Received: (Check all that apply): ☒ Soil/Solid ☐ Water ☐ Other: _____

Cooler Number/Temperature: 1, 3.1 °C 1 °C 1 °C 1 °C (Describe)

Thermometer ID: T003

Requirement Description	Yes	No	N/A	Comments (if any)
If samples require cooling, was the temperature between 0°C to ≤ 6°C ⁽¹⁾ ?	<input checked="" type="checkbox"/>	<input type="checkbox"/>	<input type="checkbox"/>	
Is there ice present (document if blue ice is used)	<input checked="" type="checkbox"/>	<input type="checkbox"/>	<input type="checkbox"/>	
Are custody seals present on cooler? (if so, document in comments if they are signed and dated, broken or intact)	<input type="checkbox"/>	<input checked="" type="checkbox"/>	<input type="checkbox"/>	
Are custody seals present on each sample container? (if so, document in comments if they are signed and dated, broken or intact)	<input type="checkbox"/>	<input checked="" type="checkbox"/>	<input type="checkbox"/>	
Were all samples received intact ⁽¹⁾ ?	<input checked="" type="checkbox"/>	<input type="checkbox"/>	<input type="checkbox"/>	
Was adequate sample volume provided ⁽¹⁾ ?	<input checked="" type="checkbox"/>	<input type="checkbox"/>	<input type="checkbox"/>	
Are short holding time analytes or samples with HTs due within 48 hours present ⁽¹⁾ ?	<input type="checkbox"/>	<input checked="" type="checkbox"/>	<input type="checkbox"/>	
Is a chain-of-custody (COC) present and filled out completely ⁽¹⁾ ?	<input checked="" type="checkbox"/>	<input type="checkbox"/>	<input type="checkbox"/>	
Does the COC agree with the number and type of sample bottles received ⁽¹⁾ ?	<input checked="" type="checkbox"/>	<input type="checkbox"/>	<input type="checkbox"/>	
Do the sample IDs on the bottle labels match the COC ⁽¹⁾ ?	<input checked="" type="checkbox"/>	<input type="checkbox"/>	<input type="checkbox"/>	
Is the COC properly relinquished by the client with date and time recorded ⁽¹⁾ ?	<input checked="" type="checkbox"/>	<input type="checkbox"/>	<input type="checkbox"/>	
For volatiles in water – is there headspace (> ¼ inch bubble) present? If yes, contact client and note in narrative.	<input checked="" type="checkbox"/>	<input type="checkbox"/>	<input type="checkbox"/>	
Are samples preserved that require preservation and was it checked ⁽¹⁾ ? (note ID of confirmation instrument used in comments) / (preservation is not confirmed for subcontracted analyses in order to insure sample integrity) / (pH < 2 for samples preserved with HNO ₃ , HCL, H ₂ SO ₄) / (pH > 10 for samples preserved with NaAsO ₂ +NaOH, ZnAc+NaOH)	<input type="checkbox"/>	<input type="checkbox"/>	<input checked="" type="checkbox"/>	
Additional Comments (if any):				

⁽¹⁾ If NO, then contact the client before proceeding with analysis and note date/time and person contacted as well as the corrective action to in the additional comments (above) and the case narrative.

Reviewed by (Project Manager) MP

Date/Time Reviewed 1/24/22

Origins Laboratory, Inc.

Jordan A. Merrill

The results in this report apply to the samples analyzed in accordance with the chain of custody document. This analytical report must be reproduced in its entirety.

Eagle Environmental Consulting, Inc.
8000 W 44th Ave
Wheat Ridge CO 80033

Martin C Eckert III
Project Number: [none]
Project: Noble - Dale #1

WH-FS-01@5'
1/20/2022 2:56:00PM

Analyte	Result	Reporting Limit	Units	Dilution	Batch	Analyst	Prepared	Analyzed	Notes
---------	--------	--------------------	-------	----------	-------	---------	----------	----------	-------

Y201392-01 (Soil)
Origins Laboratory, Inc.

Boron (DTPA Sorbitol)

Boron	0.811	0.198	mg/L	1	B2A2402	KAP	01/24/2022	01/25/2022	
-------	-------	-------	------	---	---------	-----	------------	------------	--

DRO/ORO by EPA 8015D

Diesel (C10-C28)	ND	25.0	mg/kg	1	B2A2110	EPC	01/21/2022	02/03/2022	U
Residual Range Organics (C28-C40)	ND	100	"	"	"	EPC	"	"	U

Surrogate: o-Terphenyl	125 %	50-150			"	"	"	
------------------------	-------	--------	--	--	---	---	---	--

GBTEX+TMBs by 8260D

1,2,4-Trimethylbenzene	ND	0.00200	mg/kg	1	B2A2625	ZZZ	01/26/2022	02/03/2022	U
1,3,5-Trimethylbenzene	ND	0.00200	"	"	"	ZZZ	"	"	U
Benzene	ND	0.00200	"	"	"	ZZZ	"	"	U
Ethylbenzene	ND	0.00200	"	"	"	ZZZ	"	"	U
Toluene	ND	0.00200	"	"	"	ZZZ	"	"	U
Xylenes, total	ND	0.00200	"	"	"	ZZZ	"	"	U
Gasoline Range Hydrocarbons	ND	0.200	"	"	"	ZZZ	"	"	U

Surrogate: 1,2-Dichloroethane-d4	103 %	70-130			"	"	"
Surrogate: Toluene-d8	98.7 %	70-130			"	"	"
Surrogate: 4-Bromofluorobenzene	97.4 %	70-130			"	"	"

Metals by Saturated Paste by EPA 6010

Origins Laboratory, Inc.



The results in this report apply to the samples analyzed in accordance with the chain of custody document. This analytical report must be reproduced in its entirety.

Eagle Environmental Consulting, Inc.
8000 W 44th Ave
Wheat Ridge CO 80033

Martin C Eckert III
Project Number: [none]
Project: Noble - Dale #1

WH-FS-01@5'

1/20/2022 2:56:00PM

Analyte	Result	Reporting Limit	Units	Dilution	Batch	Analyst	Prepared	Analyzed	Notes
---------	--------	-----------------	-------	----------	-------	---------	----------	----------	-------

Y201392-01 (Soil)

Origins Laboratory, Inc.

Metals by Saturated Paste by EPA 6010

Calcium	1.68	0.499	meq/L	10	[CALC]	KAP	01/24/2022	01/25/2022
Magnesium	3.18	0.823	"	"	"	KAP	"	"
Sodium	1.81	0.435	"	"	"	KAP	"	"

pH in Soil by 9045D

pH	8.08		pH Units	1	B2A2404	ACC	01/24/2022	01/25/2022
----	------	--	----------	---	---------	-----	------------	------------

SAR by 20B Saturated Paste

SAR	1.16		SAR	1	B2A2403	KAP	01/24/2022	01/25/2022
-----	------	--	-----	---	---------	-----	------------	------------

Specific Conductance Mod. 9050A

Specific Conductance (EC)	0.682	0.00500	mmhos/cm	1	B2A2405	ACC	01/24/2022	01/25/2022
---------------------------	-------	---------	----------	---	---------	-----	------------	------------

Waypoint Analytical, Inc.

PAH by 8270D SIM

1-Methylnaphthalene	0.000446	0.00067	mg/Kg	1	L596105		01/24/2022	01/25/2022	J
2-Methylnaphthalene	0.000663	0.00067	"	"	"		"	"	J
Acenaphthene	ND	0.00067	"	"	"		"	"	
Anthracene	ND	0.00067	"	"	"		"	"	
Benzo(a)anthracene	ND	0.00067	"	"	"		"	"	

Origins Laboratory, Inc.



The results in this report apply to the samples analyzed in accordance with the chain of custody document. This analytical report must be reproduced in its entirety.

Eagle Environmental Consulting, Inc.
8000 W 44th Ave
Wheat Ridge CO 80033

Martin C Eckert III
Project Number: [none]
Project: Noble - Dale #1

WH-FS-01@5'

1/20/2022 2:56:00PM

Analyte	Result	Reporting Limit	Units	Dilution	Batch	Analyst	Prepared	Analyzed	Notes
---------	--------	-----------------	-------	----------	-------	---------	----------	----------	-------

Y201392-01 (Soil)

Waypoint Analytical, Inc.

PAH by 8270D SIM

Benzo(a)pyrene	ND	0.00067	mg/Kg	1	L596105		01/24/2022	01/25/2022	
Benzo(b)fluoranthene	ND	0.00067	"	"	"		"	"	
Benzo(k)fluoranthene	ND	0.00067	"	"	"		"	"	
Chrysene	ND	0.00067	"	"	"		"	"	
Dibenz(a,h)anthracene	ND	0.00067	"	"	"		"	"	
Fluoranthene	ND	0.00067	"	"	"		"	"	
Fluorene	0.000286	0.00067	"	"	"		"	"	J
Indeno(1,2,3-cd)pyrene	ND	0.00067	"	"	"		"	"	
Naphthalene	ND	0.00067	"	"	"		"	"	
Pyrene	ND	0.00067	"	"	"		"	"	

Surrogate: 2-Fluorobiphenyl
Surrogate: 4-Terphenyl-d14
Surrogate: Nitrobenzene-d5

58.3 % 33-115 " " "
66.2 % 33-122 " " "
57.1 % 29-110 " " "

Origins Laboratory, Inc.



The results in this report apply to the samples analyzed in accordance with the chain of custody document. This analytical report must be reproduced in its entirety.

Eagle Environmental Consulting, Inc.
8000 W 44th Ave
Wheat Ridge CO 80033

Martin C Eckert III
Project Number: [none]
Project: Noble - Dale #1

Extractable Petroleum Hydrocarbons by 8015D - Quality Control
Origins Laboratory, Inc.

Analyte	Result	Reporting Limit	Units	Spike Level	Source Result	%REC	%REC Limits	RPD	RPD Limit	Notes
Batch B2A2110 - EPA 3580										
Blank (B2A2110-BLK1)					Prepared: 01/18/2022 Analyzed: 01/25/2022					
Diesel (C10-C28)	ND	25.0	mg/kg							U
Residual Range Organics (C28-C40)	ND	100	"							U
Surrogate: o-Terphenyl	21		"	24.9		85.6	50-150			

Origins Laboratory, Inc.



The results in this report apply to the samples analyzed in accordance with the chain of custody document. This analytical report must be reproduced in its entirety.

Eagle Environmental Consulting, Inc.
8000 W 44th Ave
Wheat Ridge CO 80033

Martin C Eckert III
Project Number: [none]
Project: Noble - Dale #1

Extractable Petroleum Hydrocarbons by 8015D - Quality Control Origins Laboratory, Inc.

Analyte	Result	Reporting Limit	Units	Spike Level	Source Result	%REC	%REC Limits	RPD	RPD Limit	Notes
---------	--------	-----------------	-------	-------------	---------------	------	-------------	-----	-----------	-------

Batch B2A2110 - EPA 3580

LCS (B2A2110-BS1)

Prepared: 01/18/2022 Analyzed: 01/18/2022

Diesel (C10-C28)	967	50.0	mg/kg	1000		96.7	70-130			
Residual Range Organics (C28-C40)	867	200	"	1000		86.7	70-130			
Surrogate: o-Terphenyl	42		"	49.8		85.0	50-150			

Origins Laboratory, Inc.



The results in this report apply to the samples analyzed in accordance with the chain of custody document. This analytical report must be reproduced in its entirety.

Eagle Environmental Consulting, Inc.
8000 W 44th Ave
Wheat Ridge CO 80033

Martin C Eckert III
Project Number: [none]
Project: Noble - Dale #1

Extractable Petroleum Hydrocarbons by 8015D - Quality Control
Origins Laboratory, Inc.

Analyte	Result	Reporting Limit	Units	Spike Level	Source Result	%REC	%REC Limits	RPD	RPD Limit	Notes
---------	--------	-----------------	-------	-------------	---------------	------	-------------	-----	-----------	-------

Batch B2A2110 - EPA 3580

Matrix Spike (B2A2110-MS1)		Source: Y201286-01			Prepared: 01/18/2022 Analyzed: 01/24/2022					
Diesel (C10-C28)	929	50.0	mg/kg	1000	ND	92.9	70-130			
Residual Range Organics (C28-C40)	915	200	"	1000	ND	91.5	70-130			
Surrogate: o-Terphenyl	46		"	49.8		92.5	50-150			

Origins Laboratory, Inc.



The results in this report apply to the samples analyzed in accordance with the chain of custody document. This analytical report must be reproduced in its entirety.

Eagle Environmental Consulting, Inc.
8000 W 44th Ave
Wheat Ridge CO 80033

Martin C Eckert III
Project Number: [none]
Project: Noble - Dale #1

Extractable Petroleum Hydrocarbons by 8015D - Quality Control
Origins Laboratory, Inc.

Analyte	Result	Reporting Limit	Units	Spike Level	Source Result	%REC	%REC Limits	RPD	RPD Limit	Notes
---------	--------	-----------------	-------	-------------	---------------	------	-------------	-----	-----------	-------

Batch B2A2110 - EPA 3580

Matrix Spike Dup (B2A2110-MSD1)		Source: Y201286-01			Prepared: 01/18/2022 Analyzed: 01/24/2022					
Diesel (C10-C28)	965	50.0	mg/kg	1000	ND	96.5	70-130	3.80	35	
Residual Range Organics (C28-C40)	903	200	"	1000	ND	90.3	70-130	1.35	35	
Surrogate: o-Terphenyl	41		"	49.8		81.9	50-150			

Origins Laboratory, Inc.



The results in this report apply to the samples analyzed in accordance with the chain of custody document. This analytical report must be reproduced in its entirety.

Eagle Environmental Consulting, Inc.
8000 W 44th Ave
Wheat Ridge CO 80033

Martin C Eckert III
Project Number: [none]
Project: Noble - Dale #1

Extractable Petroleum Hydrocarbons by 8015D - Quality Control

Origins Laboratory, Inc.

Analyte	Result	Reporting Limit	Units	Spike Level	Source Result	%REC	%REC Limits	RPD	RPD Limit	Notes
Batch B2A2625 - EPA 5030 (soil)										
Blank (B2A2625-BLK1)					Prepared: 01/26/2022 Analyzed: 02/02/2022					
1,2,4-Trimethylbenzene	ND	0.00200	mg/kg							U
1,3,5-Trimethylbenzene	ND	0.00200	"							U
Benzene	ND	0.00200	"							U
Ethylbenzene	ND	0.00200	"							U
Naphthalene	ND	0.0100	"							U
Toluene	ND	0.00200	"							U
Xylenes, total	ND	0.00200	"							U
Gasoline Range Hydrocarbons	ND	0.200	"							U
Surrogate: 1,2-Dichloroethane-d4	0.12		"	0.125		99.1	70-130			
Surrogate: Toluene-d8	0.13		"	0.125		101	70-130			
Surrogate: 4-Bromofluorobenzene	0.12		"	0.125		97.2	70-130			

Origins Laboratory, Inc.



The results in this report apply to the samples analyzed in accordance with the chain of custody document. This analytical report must be reproduced in its entirety.

Eagle Environmental Consulting, Inc.
8000 W 44th Ave
Wheat Ridge CO 80033

Martin C Eckert III
Project Number: [none]
Project: Noble - Dale #1

Volatile Organic Compounds by GC/MS SW846 8260D - Quality Control
Origins Laboratory, Inc.

Analyte	Result	Reporting Limit	Units	Spike Level	Source Result	%REC	%REC Limits	RPD	RPD Limit	Notes
---------	--------	-----------------	-------	-------------	---------------	------	-------------	-----	-----------	-------

Batch B2A2625 - EPA 5030 (soil)

LCS (B2A2625-BS1)

Prepared: 01/26/2022 Analyzed: 02/02/2022

1,2,4-Trimethylbenzene	0.104	0.00200	mg/kg	0.100		104	70-130			
1,3,5-Trimethylbenzene	0.110	0.00200	"	0.100		110	70-130			
Benzene	0.0998	0.00200	"	0.100		99.8	70-130			
Ethylbenzene	0.102	0.00200	"	0.100		102	70-130			
Naphthalene	0.0936	0.0100	"	0.100		93.6	70-130			
Toluene	0.105	0.00200	"	0.100		105	70-130			
o-Xylene	0.106	0.00200	"	0.100		106	70-130			
m,p-Xylene	0.206	0.00400	"	0.200		103	70-130			
Surrogate: 1,2-Dichloroethane-d4	0.12		"	0.125		96.6	70-130			
Surrogate: Toluene-d8	0.13		"	0.125		103	70-130			
Surrogate: 4-Bromofluorobenzene	0.12		"	0.125		97.5	70-130			

Origins Laboratory, Inc.



The results in this report apply to the samples analyzed in accordance with the chain of custody document. This analytical report must be reproduced in its entirety.

Eagle Environmental Consulting, Inc.
8000 W 44th Ave
Wheat Ridge CO 80033

Martin C Eckert III
Project Number: [none]
Project: Noble - Dale #1

Volatile Organic Compounds by GC/MS SW846 8260D - Quality Control
Origins Laboratory, Inc.

Analyte	Result	Reporting Limit	Units	Spike Level	Source Result	%REC	%REC Limits	RPD	RPD Limit	Notes
Batch B2A2625 - EPA 5030 (soil)										
Matrix Spike (B2A2625-MS1)		Source: Y201391-01			Prepared: 01/26/2022 Analyzed: 02/02/2022					
1,2,4-Trimethylbenzene	0.0629	0.00200	mg/kg	0.100	ND	62.9	70-130			QM-07
1,3,5-Trimethylbenzene	0.0676	0.00200	"	0.100	ND	67.6	70-130			QM-07
Benzene	0.0778	0.00200	"	0.100	ND	77.8	70-130			
Ethylbenzene	0.0684	0.00200	"	0.100	ND	68.4	70-130			QM-07
Naphthalene	0.0718	0.0100	"	0.100	0.00120	70.6	70-130			
Toluene	0.0740	0.00200	"	0.100	ND	74.0	70-130			
o-Xylene	0.0730	0.00200	"	0.100	ND	73.0	70-130			
m,p-Xylene	0.136	0.00400	"	0.200	ND	68.2	70-130			QM-07
Surrogate: 1,2-Dichloroethane-d4	0.13		"	0.125		100	70-130			
Surrogate: Toluene-d8	0.13		"	0.125		100	70-130			
Surrogate: 4-Bromofluorobenzene	0.12		"	0.125		98.3	70-130			

Origins Laboratory, Inc.



The results in this report apply to the samples analyzed in accordance with the chain of custody document. This analytical report must be reproduced in its entirety.

Eagle Environmental Consulting, Inc.
8000 W 44th Ave
Wheat Ridge CO 80033

Martin C Eckert III
Project Number: [none]
Project: Noble - Dale #1

Volatile Organic Compounds by GC/MS SW846 8260D - Quality Control
Origins Laboratory, Inc.

Analyte	Result	Reporting Limit	Units	Spike Level	Source Result	%REC	%REC Limits	RPD	RPD Limit	Notes
Batch B2A2625 - EPA 5030 (soil)										
Matrix Spike Dup (B2A2625-MSD1)		Source: Y201391-01			Prepared: 01/26/2022 Analyzed: 02/02/2022					
1,2,4-Trimethylbenzene	0.0602	0.00200	mg/kg	0.100	ND	60.2	70-130	4.48	20	QM-07
1,3,5-Trimethylbenzene	0.0641	0.00200	"	0.100	ND	64.1	70-130	5.29	20	QM-07
Benzene	0.0763	0.00200	"	0.100	ND	76.3	70-130	2.00	20	
Ethylbenzene	0.0651	0.00200	"	0.100	ND	65.1	70-130	4.91	20	QM-07
Naphthalene	0.0744	0.0100	"	0.100	0.00120	73.2	70-130	3.56	20	
Toluene	0.0721	0.00200	"	0.100	ND	72.1	70-130	2.68	20	
o-Xylene	0.0693	0.00200	"	0.100	ND	69.3	70-130	5.23	20	QM-07
m,p-Xylene	0.130	0.00400	"	0.200	ND	64.8	70-130	5.07	20	QM-07
Surrogate: 1,2-Dichloroethane-d4	0.13		"	0.125		101	70-130			
Surrogate: Toluene-d8	0.13		"	0.125		100	70-130			
Surrogate: 4-Bromofluorobenzene	0.12		"	0.125		97.2	70-130			

Origins Laboratory, Inc.



The results in this report apply to the samples analyzed in accordance with the chain of custody document. This analytical report must be reproduced in its entirety.

Eagle Environmental Consulting, Inc.
8000 W 44th Ave
Wheat Ridge CO 80033

Martin C Eckert III
Project Number: [none]
Project: Noble - Dale #1

Volatile Organic Compounds by GC/MS SW846 8260D - Quality Control

Origins Laboratory, Inc.

Analyte	Result	Reporting Limit	Units	Spike Level	Source Result	%REC	%REC Limits	RPD	RPD Limit	Notes
---------	--------	-----------------	-------	-------------	---------------	------	-------------	-----	-----------	-------

Saturated Paste - Quality Control

Origins Laboratory, Inc.

Analyte	Result	Reporting Limit	Units	Spike Level	Source Result	%REC	%REC Limits	RPD	RPD Limit	Notes
---------	--------	-----------------	-------	-------------	---------------	------	-------------	-----	-----------	-------

Batch B2A2404 - NO PREP

Duplicate (B2A2404-DUP1)

Source: Y201379-03

Prepared: 01/24/2022 Analyzed: 01/25/2022

pH	7.81	pH Units	8.04	2.90	25
----	------	----------	------	------	----

Batch B2A2405 - NO PREP

Blank (B2A2405-BLK1)

Prepared: 01/24/2022 Analyzed: 01/25/2022

Specific Conductance (EC)	0.000900	0.00500	mmhos/cm
---------------------------	----------	---------	----------

Duplicate (B2A2405-DUP1)

Source: Y201379-03

Prepared: 01/24/2022 Analyzed: 01/25/2022

Specific Conductance (EC)	0.859	0.00500	mmhos/cm	0.745	14.3	25
---------------------------	-------	---------	----------	-------	------	----

Origins Laboratory, Inc.



The results in this report apply to the samples analyzed in accordance with the chain of custody document. This analytical report must be reproduced in its entirety.

Eagle Environmental Consulting, Inc.
8000 W 44th Ave
Wheat Ridge CO 80033

Martin C Eckert III
Project Number: [none]
Project: Noble - Dale #1

PAH by 8270D SIM - Quality Control
Waypoint Analytical, Inc.

Analyte	Result	Reporting Limit	Units	Spike Level	Source Result	%REC	%REC Limits	RPD	RPD Limit	Notes
---------	--------	-----------------	-------	-------------	---------------	------	-------------	-----	-----------	-------

Batch L596105 - 3550B

MSD (L 91172-MSD-L596105)		Source: 91172			Prepared: 01/24/2022 Analyzed: 01/25/2022					
Pyrene	0.158	0.00643	mg/Kg	0.167	0.0507	64.2	30-130	7.9	30	
Indeno(1,2,3-cd)pyrene	0.0903	0.00627	"	0.167	91172	54	30-130	4.4	30	
Fluorene	0.386	0.00286	"	0.167	0.261	74.8	30-130	11.7	30	
Fluoranthene	0.116	0.00394	"	0.167	0.00906	64	30-130	2.5	30	
Dibenz(a,h)anthracene	0.107	0.00614	"	0.167	91172	64	30-130	5.4	30	
Chrysene	0.211	0.00624	"	0.167	0.102	65.2	30-130	9.9	30	
Benzo(k)fluoranthene	0.101	0.00437	"	0.167	91172	60.4	30-130	5.2	30	
Naphthalene	0.414	0.00484	"	0.167	0.225	113	30-130	14.1	30	
1-Methylnaphthalene	1.35	0.00364	"	0.167	1.02	198	30-130	16.3	30	*
Benzo(a)pyrene	0.123	0.00468	"	0.167	0.00504	73.6	30-130	0	30	
Benzo(a)anthracene	0.12	0.00493	"	0.167	0.0121	64.6	30-130	10.2	30	
Anthracene	0.101	0.00334	"	0.167	0.0194	48.8	30-130	2.3	30	
Acenaphthene	0.18	0.00304	"	0.167	0.0708	65.3	30-130	10	30	
2-Methylnaphthalene	1.19	0.00645	"	0.167	0.92	162	30-130	11.1	30	*
Benzo(b)fluoranthene	0.109	0.00585	"	0.167	0.00975	59.4	30-130	3.7	30	
Surrogate: 4-Terphenyl-d14	76.2		"	0.333	279	76.2	33-122			
Surrogate: 2-Fluorobiphenyl	58.8		"	0.333	206	58.8	33-115			
Surrogate: Nitrobenzene-d5	65.1		"	0.333	208	65.1	29-110			

MS (L 91172-MS-L596105)		Source: 91172			Prepared: 01/24/2022 Analyzed: 01/25/2022					
Chrysene	0.233	0.00624	mg/Kg	0.167	0.102	78.4	30-130			
Benzo(k)fluoranthene	0.0958	0.00437	"	0.167	91172	57.3	30-130			
Benzo(b)fluoranthene	0.105	0.00585	"	0.167	0.00975	57	30-130			
Benzo(a)pyrene	0.123	0.00468	"	0.167	0.00504	73.6	30-130			
Benzo(a)anthracene	0.133	0.00493	"	0.167	0.0121	72.3	30-130			
Dibenz(a,h)anthracene	0.113	0.00614	"	0.167	91172	67.6	30-130			
Acenaphthene	0.199	0.00304	"	0.167	0.0708	76.7	30-130			

Origins Laboratory, Inc.

The results in this report apply to the samples analyzed in accordance with the chain of custody document. This analytical report must be reproduced in its entirety.

Eagle Environmental Consulting, Inc.
8000 W 44th Ave
Wheat Ridge CO 80033

Martin C Eckert III
Project Number: [none]
Project: Noble - Dale #1

PAH by 8270D SIM - Quality Control
Waypoint Analytical, Inc.

Analyte	Result	Reporting Limit	Units	Spike Level	Source Result	%REC	%REC Limits	RPD	RPD Limit	Notes
---------	--------	-----------------	-------	-------------	---------------	------	-------------	-----	-----------	-------

Batch L596105 - 3550B

MS (L 91172-MS-L596105)		Source: 91172			Prepared: 01/24/2022 Analyzed: 01/25/2022					
2-Methylnaphthalene	1.33	0.00645	mg/Kg	0.167	0.92	246	30-130			*
Anthracene	0.0987	0.00334	"	0.167	0.0194	47.4	30-130			
Fluoranthene	0.119	0.00394	"	0.167	0.00906	65.8	30-130			
Fluorene	0.434	0.00286	"	0.167	0.261	104	30-130			
Indeno(1,2,3-cd)pyrene	0.0944	0.00627	"	0.167	91172	56.5	30-130			
Naphthalene	0.477	0.00484	"	0.167	0.225	151	30-130			*
Pyrene	0.171	0.00643	"	0.167	0.0507	72	30-130			
1-Methylnaphthalene	1.59	0.00364	"	0.167	1.02	341	30-130			*
Surrogate: 2-Fluorobiphenyl	58.2		"	0.333	206	58.2	33-115			
Surrogate: 4-Terphenyl-d14	77.4		"	0.333	279	77.4	33-122			
Surrogate: Nitrobenzene-d5	68.7		"	0.333	208	68.7	29-110			

LCS (LCS-L596105)		Prepared: 01/24/2022 Analyzed: 01/25/2022								
Fluoranthene	0.0988	0.000394	mg/Kg	0.167		59.1	30-130			
Indeno(1,2,3-cd)pyrene	0.0896	0.000627	"	0.167		53.6	30-130			
1-Methylnaphthalene	0.0892	0.000364	"	0.167		53.4	30-130			
Pyrene	0.0961	0.000643	"	0.167		57.5	30-130			
Fluorene	0.0905	0.000286	"	0.167		54.1	30-130			
Dibenz(a,h)anthracene	0.0967	0.000614	"	0.167		57.9	30-130			
Chrysene	0.0908	0.000624	"	0.167		54.3	30-130			
Benzo(k)fluoranthene	0.0815	0.000437	"	0.167		48.8	30-130			
2-Methylnaphthalene	0.0899	0.000645	"	0.167		53.8	30-130			
Naphthalene	0.0903	0.000484	"	0.167		54	30-130			
Benzo(b)fluoranthene	0.0626	0.000585	"	0.167		37.4	30-130			
Acenaphthene	0.0812	0.000304	"	0.167		48.6	30-130			
Anthracene	0.0904	0.000334	"	0.167		54.1	30-130			
Benzo(a)anthracene	0.0945	0.000493	"	0.167		56.5	30-130			

Origins Laboratory, Inc.



The results in this report apply to the samples analyzed in accordance with the chain of custody document. This analytical report must be reproduced in its entirety.

Eagle Environmental Consulting, Inc.
8000 W 44th Ave
Wheat Ridge CO 80033

Martin C Eckert III
Project Number: [none]
Project: Noble - Dale #1

PAH by 8270D SIM - Quality Control
Waypoint Analytical, Inc.

Analyte	Result	Reporting Limit	Units	Spike Level	Source Result	%REC	%REC Limits	RPD	RPD Limit	Notes
Batch L596105 - 3550B										
LCS (LCS-L596105)					Prepared: 01/24/2022 Analyzed: 01/25/2022					
Benzo(a)pyrene	0.0992	0.000468	mg/Kg	0.167		59.4	30-130			
Surrogate: Nitrobenzene-d5	58.8		"	0.333		58.8	29-110			
Surrogate: 2-Fluorobiphenyl	63.3		"	0.333		63.3	33-115			
Surrogate: 4-Terphenyl-d14	66.6		"	0.333		66.6	33-122			
LRB (LRB-L596105)					Prepared: 01/24/2022 Analyzed: 01/25/2022					
Chrysene	ND	0.00067	mg/Kg				-			
1-Methylnaphthalene	ND	0.00067	"				-			
Naphthalene	ND	0.00067	"				-			
Indeno(1,2,3-cd)pyrene	ND	0.00067	"				-			
Fluorene	ND	0.00067	"				-			
Fluoranthene	ND	0.00067	"				-			
Dibenz(a,h)anthracene	ND	0.00067	"				-			
Pyrene	ND	0.00067	"				-			
Benzo(k)fluoranthene	ND	0.00067	"				-			
Benzo(b)fluoranthene	ND	0.00067	"				-			
Benzo(a)pyrene	ND	0.00067	"				-			
Benzo(a)anthracene	ND	0.00067	"				-			
Anthracene	ND	0.00067	"				-			
Acenaphthene	ND	0.00067	"				-			
2-Methylnaphthalene	ND	0.00067	"				-			
Surrogate: Nitrobenzene-d5	61.2		"	0.333		61.2	29-110			
Surrogate: 4-Terphenyl-d14	64.5		"	0.333		64.5	33-122			
Surrogate: 2-Fluorobiphenyl	64.5		"	0.333		64.5	33-115			

Origins Laboratory, Inc.



The results in this report apply to the samples analyzed in accordance with the chain of custody document. This analytical report must be reproduced in its entirety.

Eagle Environmental Consulting, Inc.

8000 W 44th Ave

Wheat Ridge CO 80033

Martin C Eckert III

Project Number: [none]

Project: Noble - Dale #1

Notes and Definitions

U Sample is Non-Detect.

QM-07 The spike recovery was outside acceptance limits for the MS and/or MSD. The batch was accepted based on acceptable LCS recovery.

J Estimated Value. Analyte below reported quantitation limit.

* QC Failure

ND Analyte NOT DETECTED at or above the reporting limit

RPD Relative Percent Difference

All soil results are reported at a wet weight basis.

Origins Laboratory, Inc.



The results in this report apply to the samples analyzed in accordance with the chain of custody document. This analytical report must be reproduced in its entirety.



April 04, 2022

Eagle Environmental Consulting, Inc.

Martin C Eckert III

8000 W 44th Ave

Wheat Ridge CO 80033

Project Name - Noble - Dale #1 TB

Project Number - -

Attached are your analytical results for Noble - Dale #1 TB received by Origins Laboratory, Inc. March 18, 2022. This project is associated with Origins project number Y203454-01.

The analytical results in the following report were analyzed under the guidelines of EPA Methods. These methods are identified as follows; "SW" are defined in SW-846, "EPA" are defined in 40CFR part 136 and "SM" are defined in the most current revision of Standard Methods For the Examination of Water and Wastewater.

The analytical results apply specifically to the samples and analyses specified per the attached Chain of Custody. As such, this report shall not be reproduced except in full, without the written approval of Origin's laboratory.

Unless otherwise noted, the analytical results for all soil samples are reported on a wet weight basis. All analytical analyses were performed under NELAP guidelines unless noted by a data qualifier.

Any holding time exceedances, deviations from the method specifications or deviations from Origins Laboratory's Standard Operating Procedures are outlined in the case narrative.

Thank you for selecting Origins for your analytical needs. Please contact us with any questions concerning this report, or if we can help with anything at all.

Origins Laboratory, Inc.
303.433.1322
o-squad@oelabinc.com



1725 Elk Place, Denver, CO 80211 | Phone: 303.433.1322 | Fax: 303.265.9645

Eagle Environmental Consulting, Inc.
8000 W 44th Ave
Wheat Ridge CO 80033

Martin C Eckert III
Project Number: -
Project: Noble - Dale #1 TB

CROSS REFERENCE REPORT

Sample ID	Laboratory ID	Matrix	Date Sampled	Date Received
WV-SS-04@5'	Y203454-01	Soil	March 18, 2022 11:04	03/18/2022 12:45
WV-FS-01@6'	Y203454-02	Soil	March 18, 2022 11:05	03/18/2022 12:45
TB-SS-01@0.5'	Y203454-03	Soil	March 18, 2022 11:06	03/18/2022 12:45
TB-SS-02@4'	Y203454-04	Soil	March 18, 2022 10:30	03/18/2022 12:45

Origins Laboratory, Inc.



The results in this report apply to the samples analyzed in accordance with the chain of custody document. This analytical report must be reproduced in its entirety.

Eagle Environmental Consulting, Inc.
8000 W 44th Ave
Wheat Ridge CO 80033

Martin C Eckert III
Project Number: -
Project: Noble - Dale #1 TB

Origins Laboratory

F-012207-01-R1
Effective Date: 01/09/12

Sample Receipt Checklist

Origins Work Order: 4203154 Client: ECGC
Client Project ID: Dale #1 TB

Checklist Completed by: KH Shipped Via: TD
(UPS, FedEx, Hand Delivered, Pick-up, etc.)
Date/time completed: 3/28/22 Airbill #: MB

Matrix(s) Received: (Check all that apply): / Soil/Solid / Water / Other: _____

Cooler Number/Temperature: 1 / 4.9 °C / °C / °C (Describe) _____ °C

Thermometer ID: 7004

Requirement Description	Yes	No	N/A	Comments (if any)
If samples require cooling, was the temperature between 0°C to ≤ 6°C ⁽¹⁾ ?	<u>/</u>			
Is there ice present (document if blue ice is used)?	<u>/</u>			
Are custody seals present on cooler? (if so, document in comments if they are signed and dated, broken or intact)		<u>/</u>		
Are custody seals present on each sample container? (if so, document in comments if they are signed and dated, broken or intact)		<u>/</u>		
Were all samples received intact ⁽¹⁾ ?	<u>/</u>			
Was adequate sample volume provided ⁽¹⁾ ?	<u>/</u>			
Are short holding time analytes or samples with HTs due within 48 hours present ⁽¹⁾ ?		<u>/</u>		
Is a chain-of-custody (COC) present and filled out completely ⁽¹⁾ ?	<u>/</u>			
Does the COC agree with the number and type of sample bottles received ⁽¹⁾ ?	<u>/</u>			
Do the sample IDs on the bottle labels match the COC ⁽¹⁾ ?	<u>/</u>			
Is the COC properly relinquished by the client with date and time recorded ⁽¹⁾ ?	<u>/</u>			
For volatiles in water – is there headspace (> ¼ inch bubble) present? If yes, contact client and note in narrative.			<u>/</u>	
Are samples preserved that require preservation and was it checked ⁽¹⁾ ? (note ID of confirmation instrument used in comments) / (preservation is not confirmed for subcontracted analyses in order to insure sample integrity)/(pH < 2 for samples preserved with HNO ₃ , HCL, H ₂ SO ₄) / (pH > 10 for samples preserved with NaAsO ₂ +NaOH, ZnAc+NaOH)			<u>/</u>	
Additional Comments (if any):				

⁽¹⁾If NO, then contact the client before proceeding with analysis and note date/time and person contacted as well as the corrective action to in the additional comments (above) and the case narrative.

Reviewed by (Project Manager) JB Date/Time Reviewed 3-21-22

Origins Laboratory, Inc.

JB

The results in this report apply to the samples analyzed in accordance with the chain of custody document. This analytical report must be reproduced in its entirety.

Eagle Environmental Consulting, Inc.
8000 W 44th Ave
Wheat Ridge CO 80033

Martin C Eckert III
Project Number: -
Project: Noble - Dale #1 TB

WV-SS-04@5'

3/18/2022 11:04:00AM

Analyte	Result	Min Detection Limit	Reporting Limit	Units	Dilution	Batch	Prepared	Analyzed	Notes
---------	--------	---------------------	-----------------	-------	----------	-------	----------	----------	-------

Origins Laboratory, Inc.
Y203454-01 (Soil)

Boron (DTPA Sorbitol)

Boron	0.421	0.100	mg/L	1	B2C1814	03/18/2022	03/21/2022	
-------	-------	-------	------	---	---------	------------	------------	--

DRO/ORO by EPA 8015D

Diesel (C10-C28)	ND	25.0	mg/kg	1	B2C2924	03/29/2022	03/30/2022	U
Residual Range Organics (C28-C40)	ND	100	"	"	"	"	"	U

Surrogate: o-Terphenyl	120 %	50-150			"	"	"	
------------------------	-------	--------	--	--	---	---	---	--

GBTEX+TMBs by 8260D

1,2,4-Trimethylbenzene	ND	0.00200	mg/kg	1	B2C2111	03/21/2022	03/22/2022	U
1,3,5-Trimethylbenzene	ND	0.00200	"	"	"	"	"	U
Benzene	ND	0.00200	"	"	"	"	"	U
Ethylbenzene	ND	0.00200	"	"	"	"	"	U
Toluene	ND	0.00200	"	"	"	"	"	U
Xylenes, total	ND	0.00200	"	"	"	"	"	U
Gasoline Range Hydrocarbons	ND	0.200	"	"	"	"	"	U

Surrogate: 1,2-Dichloroethane-d4	98.7 %	70-130			"	"	"	
----------------------------------	--------	--------	--	--	---	---	---	--

Origins Laboratory, Inc.



The results in this report apply to the samples analyzed in accordance with the chain of custody document. This analytical report must be reproduced in its entirety.

Eagle Environmental Consulting, Inc.
8000 W 44th Ave
Wheat Ridge CO 80033

Martin C Eckert III
Project Number: -
Project: Noble - Dale #1 TB

WV-SS-04@5'

3/18/2022 11:04:00AM

Analyte	Result	Min Detection Limit	Reporting Limit	Units	Dilution	Batch	Prepared	Analyzed	Notes
---------	--------	---------------------	-----------------	-------	----------	-------	----------	----------	-------

Origins Laboratory, Inc.
Y203454-01 (Soil)

GBTEX+TMBs by 8260D

Surrogate: Toluene-d8	102 %		70-130			B2C21 11	03/21/2022	03/22/2022	
Surrogate: 4-Bromofluorobenzene	96.5 %		70-130			"	"	"	

Metals by Saturated Paste by EPA 6010

Calcium	2.99		0.499	meq/L	10	[CALC]	03/18/2022	03/21/2022	
Magnesium	1.11		0.823	"	"	"	"	"	
Sodium	ND		0.435	"	"	"	"	"	

PAH by 8270D SIM

1-Methylnaphthalene	0.00169	0.000364	0.00067	mg/Kg	1	L606602	03/23/2022	03/24/2022	
2-Methylnaphthalene	0.00294	0.000645	0.00067	"	"	"	"	"	
Acenaphthene	ND	0.000304	0.00067	"	"	"	"	"	
Anthracene	ND	0.000334	0.00067	"	"	"	"	"	
Benzo(a)anthracene	0.00112	0.000493	0.00067	"	"	"	"	"	
Benzo(a)pyrene	0.00164	0.000468	0.00067	"	"	"	"	"	
Benzo(b)fluoranthene	0.00232	0.000585	0.00067	"	"	"	"	"	
Benzo(k)fluoranthene	0.000625	0.000437	0.00067	"	"	"	"	"	J
Chrysene	0.0023	0.000624	0.00067	"	"	"	"	"	
Dibenz(a,h)anthracene	ND	0.000614	0.00067	"	"	"	"	"	
Fluoranthene	0.00243	0.000394	0.00067	"	"	"	"	"	
Fluorene	ND	0.000286	0.00067	"	"	"	"	"	

Origins Laboratory, Inc.



The results in this report apply to the samples analyzed in accordance with the chain of custody document. This analytical report must be reproduced in its entirety.

Eagle Environmental Consulting, Inc.
8000 W 44th Ave
Wheat Ridge CO 80033

Martin C Eckert III
Project Number: -
Project: Noble - Dale #1 TB

WV-SS-04@5'

3/18/2022 11:04:00AM

Analyte	Result	Min Detection Limit	Reporting Limit	Units	Dilution	Batch	Prepared	Analyzed	Notes
---------	--------	---------------------	-----------------	-------	----------	-------	----------	----------	-------

Waypoint Analytical, Inc.
Y203454-01 (Soil)

PAH by 8270D SIM

Indeno(1,2,3-cd)pyrene	0.00127	0.000627	0.00067	mg/Kg	1	L606602	03/23/2022	03/24/2022
Naphthalene	0.00148	0.000484	0.00067	"	"	"	"	"
Pyrene	0.00233	0.000643	0.00067	"	"	"	"	"

Surrogate: 2-Fluorobiphenyl	93.1 %	33-115	"	"	"
Surrogate: 4-Terphenyl-d14	111 %	33-122	"	"	"
Surrogate: Nitrobenzene-d5	105 %	29-110	"	"	"

pH in Soil by 9045D

pH	7.52	pH Units	1	B2C1812	03/18/2022	03/19/2022
----	------	----------	---	---------	------------	------------

SAR by 20B Saturated Paste

SAR	0.298	SAR	1	B2C1811	03/18/2022	03/21/2022
-----	-------	-----	---	---------	------------	------------

Specific Conductance Mod. 9050A

Specific Conductance (EC)	0.652	0.00500	mmhos/cm	1	B2C1813	03/18/2022	03/19/2022
---------------------------	-------	---------	----------	---	---------	------------	------------

Origins Laboratory, Inc.



The results in this report apply to the samples analyzed in accordance with the chain of custody document. This analytical report must be reproduced in its entirety.

Eagle Environmental Consulting, Inc.
8000 W 44th Ave
Wheat Ridge CO 80033

Martin C Eckert III
Project Number: -
Project: Noble - Dale #1 TB

WV-FS-01@6'

3/18/2022 11:05:00AM

Analyte	Result	Min Detection Limit	Reporting Limit	Units	Dilution	Batch	Prepared	Analyzed	Notes
---------	--------	---------------------	-----------------	-------	----------	-------	----------	----------	-------

Origins Laboratory, Inc.
Y203454-02 (Soil)

Boron (DTPA Sorbitol)

Boron	0.339	0.0998	mg/L	1	B2C1814	03/18/2022	03/21/2022	
-------	-------	--------	------	---	---------	------------	------------	--

DRO/ORO by EPA 8015D

Diesel (C10-C28)	31.7	25.0	mg/kg	1	B2C2924	03/29/2022	03/30/2022	
Residual Range Organics (C28-C40)	ND	100	"	"	"	"	"	U

Surrogate: o-Terphenyl	125 %	50-150	"	"	"	"	"	
------------------------	-------	--------	---	---	---	---	---	--

GBTEX+TMBs by 8260D

1,2,4-Trimethylbenzene	ND	0.00200	mg/kg	1	B2C2111	03/21/2022	03/22/2022	U
1,3,5-Trimethylbenzene	ND	0.00200	"	"	"	"	"	U
Benzene	ND	0.00200	"	"	"	"	"	U
Ethylbenzene	ND	0.00200	"	"	"	"	"	U
Toluene	ND	0.00200	"	"	"	"	"	U
Xylenes, total	ND	0.00200	"	"	"	"	"	U
Gasoline Range Hydrocarbons	ND	0.200	"	"	"	"	"	U

Surrogate: 1,2-Dichloroethane-d4	100 %	70-130	"	"	"	"	"	
Surrogate: Toluene-d8	99.6 %	70-130	"	"	"	"	"	

Origins Laboratory, Inc.



The results in this report apply to the samples analyzed in accordance with the chain of custody document. This analytical report must be reproduced in its entirety.

Eagle Environmental Consulting, Inc.
8000 W 44th Ave
Wheat Ridge CO 80033

Martin C Eckert III
Project Number: -
Project: Noble - Dale #1 TB

WV-FS-01@6'

3/18/2022 11:05:00AM

Analyte	Result	Min Detection Limit	Reporting Limit	Units	Dilution	Batch	Prepared	Analyzed	Notes
---------	--------	---------------------	-----------------	-------	----------	-------	----------	----------	-------

Origins Laboratory, Inc.
Y203454-02 (Soil)

GBTEX+TMBs by 8260D

Surrogate: 4-Bromofluorobenzene	96.6 %	70-130	B2C21 11	03/21/2022	03/22/2022
---------------------------------	--------	--------	-------------	------------	------------

Metals by Saturated Paste by EPA 6010

Calcium	3.06	0.499	meq/L	10	[CALC]	03/18/2022	03/21/2022
Magnesium	1.78	0.823	"	"	"	"	"
Sodium	0.826	0.435	"	"	"	"	"

PAH by 8270D SIM

1-Methylnaphthalene	0.000454	0.000364	0.00067	mg/Kg	1	L607240	03/26/2022	03/28/2022	J
2-Methylnaphthalene	0.000804	0.000645	0.00067	"	"	"	"	"	
Acenaphthene	ND	0.000304	0.00067	"	"	"	"	"	
Anthracene	ND	0.000334	0.00067	"	"	"	"	"	
Benzo(a)anthracene	ND	0.000493	0.00067	"	"	"	"	"	
Benzo(a)pyrene	0.000581	0.000468	0.00067	"	"	"	"	"	J
Benzo(b)fluoranthene	0.000781	0.000585	0.00067	"	"	"	"	"	
Benzo(k)fluoranthene	ND	0.000437	0.00067	"	"	"	"	"	
Chrysene	0.00206	0.000624	0.00067	"	"	"	"	"	
Dibenz(a,h)anthracene	ND	0.000614	0.00067	"	"	"	"	"	
Fluoranthene	0.000732	0.000394	0.00067	"	"	"	"	"	
Fluorene	ND	0.000286	0.00067	"	"	"	"	"	
Indeno(1,2,3-cd)pyrene	ND	0.000627	0.00067	"	"	"	"	"	

Origins Laboratory, Inc.



The results in this report apply to the samples analyzed in accordance with the chain of custody document. This analytical report must be reproduced in its entirety.

Eagle Environmental Consulting, Inc.
8000 W 44th Ave
Wheat Ridge CO 80033

Martin C Eckert III
Project Number: -
Project: Noble - Dale #1 TB

WV-FS-01@6'

3/18/2022 11:05:00AM

Analyte	Result	Min Detection Limit	Reporting Limit	Units	Dilution	Batch	Prepared	Analyzed	Notes
---------	--------	---------------------	-----------------	-------	----------	-------	----------	----------	-------

Waypoint Analytical, Inc.
Y203454-02 (Soil)

PAH by 8270D SIM

Naphthalene	0.000553	0.000484	0.00067	mg/Kg	1	L607240	03/26/2022	03/28/2022	J
Pyrene	0.000932	0.000643	0.00067	"	"	"	"	"	

Surrogate: 2-Fluorobiphenyl	57.4 %	33-115	"	"	"
Surrogate: 4-Terphenyl-d14	71.1 %	33-122	"	"	"
Surrogate: Nitrobenzene-d5	64.4 %	29-110	"	"	"

pH in Soil by 9045D

pH	7.68	pH Units	1	B2C1812	03/18/2022	03/19/2022
----	------	----------	---	---------	------------	------------

SAR by 20B Saturated Paste

SAR	0.531	SAR	1	B2C1811	03/18/2022	03/21/2022
-----	-------	-----	---	---------	------------	------------

Specific Conductance Mod. 9050A

Specific Conductance (EC)	0.694	0.00500	mmhos/cm	1	B2C1813	03/18/2022	03/19/2022
---------------------------	-------	---------	----------	---	---------	------------	------------

Origins Laboratory, Inc.



The results in this report apply to the samples analyzed in accordance with the chain of custody document. This analytical report must be reproduced in its entirety.

Eagle Environmental Consulting, Inc.
8000 W 44th Ave
Wheat Ridge CO 80033

Martin C Eckert III
Project Number: -
Project: Noble - Dale #1 TB

TB-SS-01@0.5'

3/18/2022 11:06:00AM

Analyte	Result	Min Detection Limit	Reporting Limit	Units	Dilution	Batch	Prepared	Analyzed	Notes
---------	--------	---------------------	-----------------	-------	----------	-------	----------	----------	-------

Origins Laboratory, Inc.
Y203454-03 (Soil)

Boron (DTPA Sorbitol)

Boron	ND	0.0991	mg/L	1	B2C1814	03/18/2022	03/21/2022	
-------	----	--------	------	---	---------	------------	------------	--

DRO/ORO by EPA 8015D

Diesel (C10-C28)	ND	25.0	mg/kg	1	B2C2924	03/29/2022	03/30/2022	U
Residual Range Organics (C28-C40)	ND	100	"	"	"	"	"	U

Surrogate: o-Terphenyl	130 %	50-150		"	"	"
------------------------	-------	--------	--	---	---	---

GBTEX+TMBs by 8260D

1,2,4-Trimethylbenzene	ND	0.00200	mg/kg	1	B2C2111	03/21/2022	03/22/2022	U
1,3,5-Trimethylbenzene	ND	0.00200	"	"	"	"	"	U
Benzene	ND	0.00200	"	"	"	"	"	U
Ethylbenzene	ND	0.00200	"	"	"	"	"	U
Toluene	ND	0.00200	"	"	"	"	"	U
Xylenes, total	ND	0.00200	"	"	"	"	"	U
Gasoline Range Hydrocarbons	ND	0.200	"	"	"	"	"	U

Surrogate: 1,2-Dichloroethane-d4	98.7 %	70-130		"	"	"
----------------------------------	--------	--------	--	---	---	---

Origins Laboratory, Inc.



The results in this report apply to the samples analyzed in accordance with the chain of custody document. This analytical report must be reproduced in its entirety.

Eagle Environmental Consulting, Inc.
8000 W 44th Ave
Wheat Ridge CO 80033

Martin C Eckert III
Project Number: -
Project: Noble - Dale #1 TB

TB-SS-01@0.5'

3/18/2022 11:06:00AM

Analyte	Result	Min Detection Limit	Reporting Limit	Units	Dilution	Batch	Prepared	Analyzed	Notes
---------	--------	---------------------	-----------------	-------	----------	-------	----------	----------	-------

Origins Laboratory, Inc.
Y203454-03 (Soil)

GBTEX+TMBs by 8260D

Surrogate: Toluene-d8	101 %	70-130	B2C21 11	03/21/2022	03/22/2022
Surrogate: 4-Bromofluorobenzene	97.0 %	70-130	"	"	"

Metals by Saturated Paste by EPA 6010

Calcium	2.28	0.499	meq/L	10	[CALC]	03/18/2022	03/21/2022
Magnesium	ND	0.823	"	"	"	"	"
Sodium	ND	0.435	"	"	"	"	"

PAH by 8270D SIM

1-Methylnaphthalene	0.000806	0.000364	0.00067	mg/Kg	1	L606602	03/23/2022	03/24/2022
2-Methylnaphthalene	0.00146	0.000645	0.00067	"	"	"	"	"
Acenaphthene	ND	0.000304	0.00067	"	"	"	"	"
Anthracene	ND	0.000334	0.00067	"	"	"	"	"
Benzo(a)anthracene	0.00147	0.000493	0.00067	"	"	"	"	"
Benzo(a)pyrene	0.00219	0.000468	0.00067	"	"	"	"	"
Benzo(b)fluoranthene	0.00218	0.000585	0.00067	"	"	"	"	"
Benzo(k)fluoranthene	0.00066	0.000437	0.00067	"	"	"	"	"
Chrysene	0.00199	0.000624	0.00067	"	"	"	"	"
Dibenz(a,h)anthracene	ND	0.000614	0.00067	"	"	"	"	"
Fluoranthene	0.0021	0.000394	0.00067	"	"	"	"	"
Fluorene	ND	0.000286	0.00067	"	"	"	"	"

Origins Laboratory, Inc.



The results in this report apply to the samples analyzed in accordance with the chain of custody document. This analytical report must be reproduced in its entirety.

Eagle Environmental Consulting, Inc.
8000 W 44th Ave
Wheat Ridge CO 80033

Martin C Eckert III
Project Number: -
Project: Noble - Dale #1 TB

TB-SS-01@0.5'

3/18/2022 11:06:00AM

Analyte	Result	Min Detection Limit	Reporting Limit	Units	Dilution	Batch	Prepared	Analyzed	Notes
---------	--------	---------------------	-----------------	-------	----------	-------	----------	----------	-------

Waypoint Analytical, Inc.
Y203454-03 (Soil)

PAH by 8270D SIM

Indeno(1,2,3-cd)pyrene	0.000883	0.000627	0.00067	mg/Kg	1	L606602	03/23/2022	03/24/2022	
Naphthalene	0.000663	0.000484	0.00067	"	"	"	"	"	J
Pyrene	0.00258	0.000643	0.00067	"	"	"	"	"	

Surrogate: 2-Fluorobiphenyl	42.2 %	33-115	"	"	"
Surrogate: 4-Terphenyl-d14	64.2 %	33-122	"	"	"
Surrogate: Nitrobenzene-d5	47.3 %	29-110	"	"	"

pH in Soil by 9045D

pH	7.36	pH Units	1	B2C1812	03/18/2022	03/19/2022
----	------	----------	---	---------	------------	------------

SAR by 20B Saturated Paste

SAR	0.124	SAR	1	B2C1811	03/18/2022	03/21/2022
-----	-------	-----	---	---------	------------	------------

Specific Conductance Mod. 9050A

Specific Conductance (EC)	0.366	0.00500	mmhos/cm	1	B2C1813	03/18/2022	03/19/2022
---------------------------	-------	---------	----------	---	---------	------------	------------

Origins Laboratory, Inc.



The results in this report apply to the samples analyzed in accordance with the chain of custody document. This analytical report must be reproduced in its entirety.

Eagle Environmental Consulting, Inc.
8000 W 44th Ave
Wheat Ridge CO 80033

Martin C Eckert III
Project Number: -
Project: Noble - Dale #1 TB

TB-SS-02@4'

3/18/2022 10:30:00AM

Analyte	Result	Min Detection Limit	Reporting Limit	Units	Dilution	Batch	Prepared	Analyzed	Notes
---------	--------	---------------------	-----------------	-------	----------	-------	----------	----------	-------

Origins Laboratory, Inc.
Y203454-04 (Soil)

Boron (DTPA Sorbitol)

Boron	0.278	0.0992	mg/L	1	B2C1814	03/18/2022	03/21/2022	
-------	-------	--------	------	---	---------	------------	------------	--

DRO/ORO by EPA 8015D

Diesel (C10-C28)	ND	25.0	mg/kg	1	B2C2924	03/29/2022	03/30/2022	U
Residual Range Organics (C28-C40)	ND	100	"	"	"	"	"	U

Surrogate: o-Terphenyl	126 %	50-150			"	"	"	
------------------------	-------	--------	--	--	---	---	---	--

GBTEX+TMBs by 8260D

1,2,4-Trimethylbenzene	ND	0.00200	mg/kg	1	B2C2111	03/21/2022	03/31/2022	U
1,3,5-Trimethylbenzene	ND	0.00200	"	"	"	"	"	U
Benzene	ND	0.00200	"	"	"	"	"	U
Ethylbenzene	ND	0.00200	"	"	"	"	"	U
Toluene	ND	0.00200	"	"	"	"	"	U
Xylenes, total	ND	0.00200	"	"	"	"	"	U
Gasoline Range Hydrocarbons	ND	0.200	"	"	"	"	"	U

Surrogate: 1,2-Dichloroethane-d4	105 %	70-130			"	"	"	
----------------------------------	-------	--------	--	--	---	---	---	--

Origins Laboratory, Inc.



The results in this report apply to the samples analyzed in accordance with the chain of custody document. This analytical report must be reproduced in its entirety.

Eagle Environmental Consulting, Inc.
8000 W 44th Ave
Wheat Ridge CO 80033

Martin C Eckert III
Project Number: -
Project: Noble - Dale #1 TB

TB-SS-02@4'

3/18/2022 10:30:00AM

Analyte	Result	Min Detection Limit	Reporting Limit	Units	Dilution	Batch	Prepared	Analyzed	Notes
---------	--------	---------------------	-----------------	-------	----------	-------	----------	----------	-------

Origins Laboratory, Inc.
Y203454-04 (Soil)

GBTEX+TMBs by 8260D

Surrogate: Toluene-d8	98.3 %	70-130	B2C21 11	03/21/2022	03/31/2022
Surrogate: 4-Bromofluorobenzene	96.5 %	70-130	"	"	"

Metals by Saturated Paste by EPA 6010

Calcium	1.75	0.499	meq/L	10	[CALC]	03/18/2022	03/21/2022
Magnesium	0.963	0.823	"	"	"	"	"
Sodium	ND	0.435	"	"	"	"	"

PAH by 8270D SIM

1-Methylnaphthalene	0.000503	0.000364	0.00067	mg/Kg	1	L606602	03/23/2022	03/24/2022	J
2-Methylnaphthalene	0.00111	0.000645	0.00067	"	"	"	"	"	
Acenaphthene	ND	0.000304	0.00067	"	"	"	"	"	
Anthracene	ND	0.000334	0.00067	"	"	"	"	"	
Benzo(a)anthracene	0.000656	0.000493	0.00067	"	"	"	"	"	J
Benzo(a)pyrene	0.000992	0.000468	0.00067	"	"	"	"	"	
Benzo(b)fluoranthene	0.00135	0.000585	0.00067	"	"	"	"	"	
Benzo(k)fluoranthene	ND	0.000437	0.00067	"	"	"	"	"	
Chrysene	0.000846	0.000624	0.00067	"	"	"	"	"	
Dibenz(a,h)anthracene	ND	0.000614	0.00067	"	"	"	"	"	
Fluoranthene	0.00113	0.000394	0.00067	"	"	"	"	"	
Fluorene	ND	0.000286	0.00067	"	"	"	"	"	

Origins Laboratory, Inc.



The results in this report apply to the samples analyzed in accordance with the chain of custody document. This analytical report must be reproduced in its entirety.

Eagle Environmental Consulting, Inc.
8000 W 44th Ave
Wheat Ridge CO 80033

Martin C Eckert III
Project Number: -
Project: Noble - Dale #1 TB

TB-SS-02@4'

3/18/2022 10:30:00AM

Analyte	Result	Min Detection Limit	Reporting Limit	Units	Dilution	Batch	Prepared	Analyzed	Notes
---------	--------	---------------------	-----------------	-------	----------	-------	----------	----------	-------

Waypoint Analytical, Inc.
Y203454-04 (Soil)

PAH by 8270D SIM

Indeno(1,2,3-cd)pyrene	ND	0.000627	0.00067	mg/Kg	1	L606602	03/23/2022	03/24/2022	
Naphthalene	0.000496	0.000484	0.00067	"	"	"	"	"	J
Pyrene	0.00114	0.000643	0.00067	"	"	"	"	"	

Surrogate: 2-Fluorobiphenyl	44.2 %		33-115			"	"	"	
Surrogate: 4-Terphenyl-d14	58 %		33-122			"	"	"	
Surrogate: Nitrobenzene-d5	51.2 %		29-110			"	"	"	

pH in Soil by 9045D

pH	7.66			pH Units	1	B2C1812	03/18/2022	03/19/2022	
----	------	--	--	----------	---	---------	------------	------------	--

SAR by 20B Saturated Paste

SAR	0.213			SAR	1	B2C1811	03/18/2022	03/21/2022	
-----	--------------	--	--	-----	---	---------	------------	------------	--

Specific Conductance Mod. 9050A

Specific Conductance (EC)	0.484		0.00500	mmhos/cm	1	B2C1813	03/18/2022	03/19/2022	
---------------------------	--------------	--	---------	----------	---	---------	------------	------------	--

Origins Laboratory, Inc.



The results in this report apply to the samples analyzed in accordance with the chain of custody document. This analytical report must be reproduced in its entirety.

Eagle Environmental Consulting, Inc.
8000 W 44th Ave
Wheat Ridge CO 80033

Martin C Eckert III
Project Number: -
Project: Noble - Dale #1 TB

Volatile Organic Compounds by GC/MS SW846 8260D - Quality Control
Origins Laboratory, Inc.

Analyte	Result	Reporting Limit	Units	Spike Level	Source Result	%REC	%REC Limits	RPD	RPD Limit	Notes
Batch B2C2111 - EPA 5030 (soil)										
Blank (B2C2111-BLK1)					Prepared: 03/21/2022 Analyzed: 03/21/2022					
1,2,4-Trimethylbenzene	ND	0.00200	mg/kg							U
1,3,5-Trimethylbenzene	ND	0.00200	"							U
Benzene	ND	0.00200	"							U
Ethylbenzene	ND	0.00200	"							U
Naphthalene	ND	0.0100	"							U
Toluene	ND	0.00200	"							U
Xylenes, total	ND	0.00200	"							U
Gasoline Range Hydrocarbons	ND	0.200	"							U
Surrogate: 1,2-Dichloroethane-d4	0.11		"	0.125		84.5	70-130			
Surrogate: Toluene-d8	0.13		"	0.125		104	70-130			
Surrogate: 4-Bromofluorobenzene	0.12		"	0.125		95.7	70-130			

Origins Laboratory, Inc.



The results in this report apply to the samples analyzed in accordance with the chain of custody document. This analytical report must be reproduced in its entirety.

Eagle Environmental Consulting, Inc.
8000 W 44th Ave
Wheat Ridge CO 80033

Martin C Eckert III
Project Number: -
Project: Noble - Dale #1 TB

Volatile Organic Compounds by GC/MS SW846 8260D - Quality Control
Origins Laboratory, Inc.

Analyte	Result	Reporting Limit	Units	Spike Level	Source Result	%REC	%REC Limits	RPD	RPD Limit	Notes
Batch B2C2111 - EPA 5030 (soil)										
LCS (B2C2111-BS1)					Prepared: 03/21/2022 Analyzed: 03/21/2022					
1,2,4-Trimethylbenzene	0.0955	0.00200	mg/kg	0.100		95.5	70-130			
1,3,5-Trimethylbenzene	0.0960	0.00200	"	0.100		96.0	70-130			
Benzene	0.101	0.00200	"	0.100		101	70-130			
Ethylbenzene	0.0954	0.00200	"	0.100		95.4	70-130			
Naphthalene	0.106	0.0100	"	0.100		106	70-130			
Toluene	0.106	0.00200	"	0.100		106	70-130			
o-Xylene	0.0957	0.00200	"	0.100		95.7	70-130			
m,p-Xylene	0.191	0.00400	"	0.200		95.4	70-130			
Surrogate: 1,2-Dichloroethane-d4	0.10		"	0.125		82.7	70-130			
Surrogate: Toluene-d8	0.13		"	0.125		100	70-130			
Surrogate: 4-Bromofluorobenzene	0.13		"	0.125		104	70-130			

Origins Laboratory, Inc.



The results in this report apply to the samples analyzed in accordance with the chain of custody document. This analytical report must be reproduced in its entirety.

Eagle Environmental Consulting, Inc.
8000 W 44th Ave
Wheat Ridge CO 80033

Martin C Eckert III
Project Number: -
Project: Noble - Dale #1 TB

Volatile Organic Compounds by GC/MS SW846 8260D - Quality Control
Origins Laboratory, Inc.

Analyte	Result	Reporting Limit	Units	Spike Level	Source Result	%REC	%REC Limits	RPD	RPD Limit	Notes
Batch B2C2111 - EPA 5030 (soil)										
Matrix Spike (B2C2111-MS1)		Source: Y203412-01			Prepared: 03/21/2022 Analyzed: 03/25/2022					
1,2,4-Trimethylbenzene	0.105	0.00200	mg/kg	0.100	ND	105	70-130			
1,3,5-Trimethylbenzene	0.105	0.00200	"	0.100	ND	105	70-130			
Benzene	0.0987	0.00200	"	0.100	ND	98.7	70-130			
Ethylbenzene	0.0985	0.00200	"	0.100	ND	98.5	70-130			
Naphthalene	0.106	0.0100	"	0.100	ND	106	70-130			
Toluene	0.0963	0.00200	"	0.100	ND	96.3	70-130			
o-Xylene	0.0989	0.00200	"	0.100	ND	98.9	70-130			
m,p-Xylene	0.199	0.00400	"	0.200	ND	99.3	70-130			
Surrogate: 1,2-Dichloroethane-d4	0.11		"	0.125		90.9	70-130			
Surrogate: Toluene-d8	0.13		"	0.125		100	70-130			
Surrogate: 4-Bromofluorobenzene	0.12		"	0.125		95.6	70-130			

Origins Laboratory, Inc.



The results in this report apply to the samples analyzed in accordance with the chain of custody document. This analytical report must be reproduced in its entirety.

Eagle Environmental Consulting, Inc.
8000 W 44th Ave
Wheat Ridge CO 80033

Martin C Eckert III
Project Number: -
Project: Noble - Dale #1 TB

Volatile Organic Compounds by GC/MS SW846 8260D - Quality Control
Origins Laboratory, Inc.

Analyte	Result	Reporting Limit	Units	Spike Level	Source Result	%REC	%REC Limits	RPD	RPD Limit	Notes
Batch B2C2111 - EPA 5030 (soil)										
Matrix Spike Dup (B2C2111-MSD1)		Source: Y203412-01			Prepared: 03/21/2022 Analyzed: 03/25/2022					
1,2,4-Trimethylbenzene	0.105	0.00200	mg/kg	0.100	ND	105	70-130	0.152	20	
1,3,5-Trimethylbenzene	0.106	0.00200	"	0.100	ND	106	70-130	0.833	20	
Benzene	0.0976	0.00200	"	0.100	ND	97.6	70-130	1.08	20	
Ethylbenzene	0.0994	0.00200	"	0.100	ND	99.4	70-130	0.869	20	
Naphthalene	0.109	0.0100	"	0.100	ND	109	70-130	2.14	20	
Toluene	0.0965	0.00200	"	0.100	ND	96.5	70-130	0.187	20	
o-Xylene	0.0998	0.00200	"	0.100	ND	99.8	70-130	0.866	20	
m,p-Xylene	0.201	0.00400	"	0.200	ND	100	70-130	0.992	20	
Surrogate: 1,2-Dichloroethane-d4	0.12		"	0.125		92.0	70-130			
Surrogate: Toluene-d8	0.12		"	0.125		100	70-130			
Surrogate: 4-Bromofluorobenzene	0.12		"	0.125		96.9	70-130			

Origins Laboratory, Inc.



The results in this report apply to the samples analyzed in accordance with the chain of custody document. This analytical report must be reproduced in its entirety.

Eagle Environmental Consulting, Inc.
8000 W 44th Ave
Wheat Ridge CO 80033

Martin C Eckert III
Project Number: -
Project: Noble - Dale #1 TB

Volatile Organic Compounds by GC/MS SW846 8260D - Quality Control
Origins Laboratory, Inc.

Analyte	Result	Reporting Limit	Units	Spike Level	Source Result	%REC	%REC Limits	RPD	RPD Limit	Notes
Batch B2C2924 - EPA 3580										
Blank (B2C2924-BLK1)					Prepared: 03/29/2022 Analyzed: 03/30/2022					
Diesel (C10-C28)	ND	25.0	mg/kg							U
Residual Range Organics (C28-C40)	ND	100	"							U
Surrogate: o-Terphenyl	32		"	24.9		131	50-150			

Origins Laboratory, Inc.



The results in this report apply to the samples analyzed in accordance with the chain of custody document. This analytical report must be reproduced in its entirety.

Eagle Environmental Consulting, Inc.
8000 W 44th Ave
Wheat Ridge CO 80033

Martin C Eckert III
Project Number: -
Project: Noble - Dale #1 TB

Extractable Petroleum Hydrocarbons by 8015D - Quality Control
Origins Laboratory, Inc.

Analyte	Result	Reporting Limit	Units	Spike Level	Source Result	%REC	%REC Limits	RPD	RPD Limit	Notes
---------	--------	-----------------	-------	-------------	---------------	------	-------------	-----	-----------	-------

Batch B2C2924 - EPA 3580

LCS (B2C2924-BS1)

Prepared: 03/29/2022 Analyzed: 03/30/2022

Diesel (C10-C28)	1020	50.0	mg/kg	1000		102	70-130			
Residual Range Organics (C28-C40)	917	200	"	1000		91.7	70-130			
Surrogate: o-Terphenyl	66		"	49.8		132	50-150			

Origins Laboratory, Inc.



The results in this report apply to the samples analyzed in accordance with the chain of custody document. This analytical report must be reproduced in its entirety.

Eagle Environmental Consulting, Inc.
8000 W 44th Ave
Wheat Ridge CO 80033

Martin C Eckert III
Project Number: -
Project: Noble - Dale #1 TB

Extractable Petroleum Hydrocarbons by 8015D - Quality Control
Origins Laboratory, Inc.

Analyte	Result	Reporting Limit	Units	Spike Level	Source Result	%REC	%REC Limits	RPD	RPD Limit	Notes
---------	--------	-----------------	-------	-------------	---------------	------	-------------	-----	-----------	-------

Batch B2C2924 - EPA 3580

Matrix Spike (B2C2924-MS1)		Source: Y203429-01			Prepared: 03/29/2022 Analyzed: 03/30/2022					
Diesel (C10-C28)	1030	50.0	mg/kg	1000	ND	103	70-130			
Residual Range Organics (C28-C40)	959	200	"	1000	51.9	90.7	70-130			
Surrogate: o-Terphenyl	64		"	49.8		128	50-150			

Origins Laboratory, Inc.



The results in this report apply to the samples analyzed in accordance with the chain of custody document. This analytical report must be reproduced in its entirety.

Eagle Environmental Consulting, Inc.
8000 W 44th Ave
Wheat Ridge CO 80033

Martin C Eckert III
Project Number: -
Project: Noble - Dale #1 TB

Extractable Petroleum Hydrocarbons by 8015D - Quality Control
Origins Laboratory, Inc.

Analyte	Result	Reporting Limit	Units	Spike Level	Source Result	%REC	%REC Limits	RPD	RPD Limit	Notes
---------	--------	-----------------	-------	-------------	---------------	------	-------------	-----	-----------	-------

Batch B2C2924 - EPA 3580

Matrix Spike Dup (B2C2924-MSD1)		Source: Y203429-01			Prepared: 03/29/2022 Analyzed: 03/30/2022					
Diesel (C10-C28)	1020	50.0	mg/kg	1000	ND	102	70-130	1.47	35	
Residual Range Organics (C28-C40)	1020	200	"	1000	51.9	96.6	70-130	5.93	35	
Surrogate: o-Terphenyl	58		"	49.8		117	50-150			

Origins Laboratory, Inc.



The results in this report apply to the samples analyzed in accordance with the chain of custody document. This analytical report must be reproduced in its entirety.

Eagle Environmental Consulting, Inc.
8000 W 44th Ave
Wheat Ridge CO 80033

Martin C Eckert III
Project Number: -
Project: Noble - Dale #1 TB

Extractable Petroleum Hydrocarbons by 8015D - Quality Control

Origins Laboratory, Inc.

Analyte	Result	Reporting Limit	Units	Spike Level	Source Result	%REC	%REC Limits	RPD	RPD Limit	Notes
---------	--------	-----------------	-------	-------------	---------------	------	-------------	-----	-----------	-------

Saturated Paste - Quality Control

Origins Laboratory, Inc.

Analyte	Result	Reporting Limit	Units	Spike Level	Source Result	%REC	%REC Limits	RPD	RPD Limit	Notes
---------	--------	-----------------	-------	-------------	---------------	------	-------------	-----	-----------	-------

Batch B2C1812 - NO PREP

Duplicate (B2C1812-DUP1)

Source: Y203422-11

Prepared: 03/18/2022 Analyzed: 03/19/2022

pH	7.95		pH Units		8.01			0.752	25	
----	------	--	----------	--	------	--	--	-------	----	--

Batch B2C1813 - NO PREP

Blank (B2C1813-BLK1)

Prepared: 03/18/2022 Analyzed: 03/19/2022

Specific Conductance (EC)	0.00100	0.00500	mmhos/cm							
---------------------------	---------	---------	----------	--	--	--	--	--	--	--

Duplicate (B2C1813-DUP1)

Source: Y203422-11

Prepared: 03/18/2022 Analyzed: 03/19/2022

Specific Conductance (EC)	0.196	0.00500	mmhos/cm		0.194			0.822	25	
---------------------------	-------	---------	----------	--	-------	--	--	-------	----	--

Origins Laboratory, Inc.



The results in this report apply to the samples analyzed in accordance with the chain of custody document. This analytical report must be reproduced in its entirety.

Eagle Environmental Consulting, Inc.
8000 W 44th Ave
Wheat Ridge CO 80033

Martin C Eckert III
Project Number: -
Project: Noble - Dale #1 TB

PAH by 8270D SIM - Quality Control
Waypoint Analytical, Inc.

Analyte	Result	Reporting Limit	Units	Spike Level	Source Result	%REC	%REC Limits	RPD	RPD Limit	Notes
---------	--------	-----------------	-------	-------------	---------------	------	-------------	-----	-----------	-------

Batch L607240 - 3550B

MSD (L 93036-MSD-L607240)		Source: Y203454-02			Prepared: 03/26/2022 Analyzed: 03/28/2022					
Benzo(a)anthracene	0.105	0.000493	mg/Kg	0.165	<0.000493	63.6	30-130	5.5	30	
Naphthalene	0.0801	0.000484	"	0.165	0.000553	48.2	30-130	12.7	30	
Indeno(1,2,3-cd)pyrene	0.097	0.000627	"	0.165	<0.000627	58.7	30-130	5.7	30	
Fluorene	0.0955	0.000286	"	0.165	<0.000286	57.8	30-130	6.5	30	
Fluoranthene	0.0936	0.000394	"	0.165	0.000732	56.2	30-130	3.6	30	
Dibenz(a,h)anthracene	0.0993	0.000614	"	0.165	<0.000614	60.1	30-130	12	30	
Chrysene	0.0995	0.000624	"	0.165	0.00206	59	30-130	1.4	30	
1-Methylnaphthalene	0.0848	0.000364	"	0.165	0.000454	51.1	30-130	10.3	30	
Benzo(b)fluoranthene	0.071	0.000585	"	0.165	0.000781	42.5	30-130	19.9	30	
Acenaphthene	0.0877	0.000304	"	0.165	<0.000304	53.1	30-130	5.6	30	
2-Methylnaphthalene	0.0859	0.000645	"	0.165	0.000804	51.5	30-130	11.3	30	
Pyrene	0.0904	0.000643	"	0.165	0.000932	54.2	30-130	4.3	30	
Benzo(a)pyrene	0.0986	0.000468	"	0.165	0.000581	59.4	30-130	5.3	30	
Benzo(k)fluoranthene	0.0765	0.000437	"	0.165	<0.000437	46.3	30-130	3.3	30	
Anthracene	0.0916	0.000334	"	0.165	<0.000334	55.5	30-130	6.6	30	
Surrogate: Nitrobenzene-d5	56.3		"	0.33	212	56.3	29-110			
Surrogate: 4-Terphenyl-d14	59.6		"	0.33	234	59.6	33-122			
Surrogate: 2-Fluorobiphenyl	52.7		"	0.33	189	52.7	33-115			

MS (L 93036-MS-L607240)		Source: Y203454-02			Prepared: 03/26/2022 Analyzed: 03/28/2022					
Fluorene	0.102	0.000286	mg/Kg	0.163	<0.000286	62.5	30-130			
Naphthalene	0.091	0.000484	"	0.163	0.000553	55.4	30-130			
1-Methylnaphthalene	0.0941	0.000364	"	0.163	0.000454	57.4	30-130			
Pyrene	0.0944	0.000643	"	0.163	0.000932	57.3	30-130			
2-Methylnaphthalene	0.0962	0.000645	"	0.163	0.000804	58.5	30-130			
Dibenz(a,h)anthracene	0.112	0.000614	"	0.163	<0.000614	68.7	30-130			
Anthracene	0.0979	0.000334	"	0.163	<0.000334	60	30-130			

Origins Laboratory, Inc.



The results in this report apply to the samples analyzed in accordance with the chain of custody document. This analytical report must be reproduced in its entirety.

Eagle Environmental Consulting, Inc.
8000 W 44th Ave
Wheat Ridge CO 80033

Martin C Eckert III
Project Number: -
Project: Noble - Dale #1 TB

PAH by 8270D SIM - Quality Control
Waypoint Analytical, Inc.

Analyte	Result	Reporting Limit	Units	Spike Level	Source Result	%REC	%REC Limits	RPD	RPD Limit	Notes
---------	--------	-----------------	-------	-------------	---------------	------	-------------	-----	-----------	-------

Batch L607240 - 3550B

MS (L 93036-MS-L607240)		Source: Y203454-02			Prepared: 03/26/2022 Analyzed: 03/28/2022					
Benzo(a)anthracene	0.111	0.000493	mg/Kg	0.163	<0.000493	68	30-130			
Benzo(a)pyrene	0.104	0.000468	"	0.163	0.000581	63.4	30-130			
Benzo(b)fluoranthene	0.0867	0.000585	"	0.163	0.000781	52.7	30-130			
Benzo(k)fluoranthene	0.074	0.000437	"	0.163	<0.000437	45.3	30-130			
Chrysene	0.101	0.000624	"	0.163	0.00206	60.6	30-130			
Acenaphthene	0.0928	0.000304	"	0.163	<0.000304	56.9	30-130			
Fluoranthene	0.0971	0.000394	"	0.163	0.000732	59.1	30-130			
Indeno(1,2,3-cd)pyrene	0.0916	0.000627	"	0.163	<0.000627	56.1	30-130			
Surrogate: 2-Fluorobiphenyl	53.6		"	0.326	189	53.6	33-115			
Surrogate: Nitrobenzene-d5	58.5		"	0.326	212	58.5	29-110			
Surrogate: 4-Terphenyl-d14	64.1		"	0.326	234	64.1	33-122			

LCS (LCS-L607240)

Prepared: 03/26/2022 Analyzed: 03/28/2022

Benzo(a)anthracene	0.13	0.000493	mg/Kg	0.167		77.8	30-130
Anthracene	0.118	0.000334	"	0.167		70.6	30-130
Acenaphthene	0.11	0.000304	"	0.167		65.8	30-130
2-Methylnaphthalene	0.105	0.000645	"	0.167		62.8	30-130
1-Methylnaphthalene	0.104	0.000364	"	0.167		62.2	30-130
Naphthalene	0.0982	0.000484	"	0.167		58.8	30-130
Benzo(a)pyrene	0.125	0.000468	"	0.167		74.8	30-130
Pyrene	0.124	0.000643	"	0.167		74.2	30-130
Benzo(b)fluoranthene	0.104	0.000585	"	0.167		62.2	30-130
Benzo(k)fluoranthene	0.112	0.000437	"	0.167		67	30-130
Chrysene	0.122	0.000624	"	0.167		73	30-130
Dibenz(a,h)anthracene	0.12	0.000614	"	0.167		71.8	30-130
Fluoranthene	0.123	0.000394	"	0.167		73.6	30-130
Indeno(1,2,3-cd)pyrene	0.121	0.000627	"	0.167		72.4	30-130

Origins Laboratory, Inc.



The results in this report apply to the samples analyzed in accordance with the chain of custody document. This analytical report must be reproduced in its entirety.

Eagle Environmental Consulting, Inc.
8000 W 44th Ave
Wheat Ridge CO 80033

Martin C Eckert III
Project Number: -
Project: Noble - Dale #1 TB

PAH by 8270D SIM - Quality Control
Waypoint Analytical, Inc.

Analyte	Result	Reporting Limit	Units	Spike Level	Source Result	%REC	%REC Limits	RPD	RPD Limit	Notes
---------	--------	-----------------	-------	-------------	---------------	------	-------------	-----	-----------	-------

Batch L607240 - 3550B

LCS (LCS-L607240)

Prepared: 03/26/2022 Analyzed: 03/28/2022

Fluorene	0.119	0.000286	mg/Kg	0.167		71.2	30-130			
Surrogate: 4-Terphenyl-d14	85.5		"	0.333		85.5	33-122			
Surrogate: 2-Fluorobiphenyl	66		"	0.333		66	33-115			
Surrogate: Nitrobenzene-d5	73.5		"	0.333		73.5	29-110			

LRB (LRB-L607240)

Prepared: 03/26/2022 Analyzed: 03/28/2022

Benzo(a)pyrene	ND	0.00067	mg/Kg				-			
2-Methylnaphthalene	ND	0.00067	"				-			
1-Methylnaphthalene	ND	0.00067	"				-			
Acenaphthene	ND	0.00067	"				-			
Benzo(b)fluoranthene	ND	0.00067	"				-			
Benzo(a)anthracene	ND	0.00067	"				-			
Benzo(k)fluoranthene	ND	0.00067	"				-			
Chrysene	ND	0.00067	"				-			
Dibenz(a,h)anthracene	ND	0.00067	"				-			
Fluoranthene	ND	0.00067	"				-			
Fluorene	ND	0.00067	"				-			
Indeno(1,2,3-cd)pyrene	ND	0.00067	"				-			
Anthracene	ND	0.00067	"				-			
Pyrene	ND	0.00067	"				-			
Naphthalene	ND	0.00067	"				-			
Surrogate: 4-Terphenyl-d14	85.5		"	0.333		85.5	33-122			
Surrogate: 2-Fluorobiphenyl	69.3		"	0.333		69.3	33-115			
Surrogate: Nitrobenzene-d5	77.1		"	0.333		77.1	29-110			

Origins Laboratory, Inc.



The results in this report apply to the samples analyzed in accordance with the chain of custody document. This analytical report must be reproduced in its entirety.

Eagle Environmental Consulting, Inc.
8000 W 44th Ave
Wheat Ridge CO 80033

Martin C Eckert III
Project Number: -
Project: Noble - Dale #1 TB

PAH by 8270D SIM - Quality Control
Waypoint Analytical, Inc.

Analyte	Result	Reporting Limit	Units	Spike Level	Source Result	%REC	%REC Limits	RPD	RPD Limit	Notes
---------	--------	-----------------	-------	-------------	---------------	------	-------------	-----	-----------	-------

Batch L606602 - 3550B

MSD (L 92279-MSD-L606602)		Source: 92279			Prepared: 03/23/2022 Analyzed: 03/24/2022					
2-Methylnaphthalene	0.0213	0.000645	mg/Kg	0.162	<0.000645	13.1	30-130	45.9	30	*
1-Methylnaphthalene	0.0226	0.000364	"	0.162	<0.000364	13.9	30-130	45.4	30	*
Naphthalene	0.0267	0.000484	"	0.162	<0.000484	16.4	30-130	21.4	30	*
Indeno(1,2,3-cd)pyrene	0.0266	0.000627	"	0.162	<0.000627	16.4	30-130	43.2	30	*
Fluorene	0.0283	0.000286	"	0.162	<0.000286	17.4	30-130	33.2	30	*
Fluoranthene	0.0308	0.000394	"	0.162	<0.000394	19	30-130	42.8	30	*
Anthracene	0.0245	0.000334	"	0.162	<0.000334	15.1	30-130	34.4	30	*
Chrysene	0.0241	0.000624	"	0.162	<0.000624	14.8	30-130	33.5	30	*
Benzo(k)fluoranthene	0.0274	0.000437	"	0.162	<0.000437	16.9	30-130	37.6	30	*
Benzo(b)fluoranthene	0.0265	0.000585	"	0.162	<0.000585	16.3	30-130	39.6	30	*
Acenaphthene	0.0259	0.000304	"	0.162	<0.000304	15.9	30-130	28.1	30	*
Benzo(a)pyrene	0.026	0.000468	"	0.162	<0.000468	16	30-130	41.7	30	*
Benzo(a)anthracene	0.0255	0.000493	"	0.162	<0.000493	15.7	30-130	41.8	30	*
Dibenz(a,h)anthracene	0.0236	0.000614	"	0.162	<0.000614	14.5	30-130	54.9	30	*
Pyrene	0.0362	0.000643	"	0.162	<0.000643	22.3	30-130	35.2	30	*
Surrogate: 2-Fluorobiphenyl	11.2		"	0.325	150	11.2	33-115			*
Surrogate: Nitrobenzene-d5	38.4		"	0.325	172	38.4	29-110			
Surrogate: 4-Terphenyl-d14	12.3		"	0.325	202	12.3	33-122			*

MS (L 92279-MS-L606602)		Source: 92279			Prepared: 03/23/2022 Analyzed: 03/24/2022					
Benzo(b)fluoranthene	0.0396	0.000585	mg/Kg	0.167	<0.000585	23.7	30-130			*
Benzo(a)pyrene	0.0397	0.000468	"	0.167	<0.000468	23.7	30-130			*
Benzo(a)anthracene	0.039	0.000493	"	0.167	<0.000493	23.3	30-130			*
Anthracene	0.0347	0.000334	"	0.167	<0.000334	20.7	30-130			*
Acenaphthene	0.0344	0.000304	"	0.167	<0.000304	20.5	30-130			*
2-Methylnaphthalene	0.034	0.000645	"	0.167	<0.000645	20.3	30-130			*
1-Methylnaphthalene	0.0359	0.000364	"	0.167	<0.000364	21.4	30-130			*

Origins Laboratory, Inc.



The results in this report apply to the samples analyzed in accordance with the chain of custody document. This analytical report must be reproduced in its entirety.

Eagle Environmental Consulting, Inc.
8000 W 44th Ave
Wheat Ridge CO 80033

Martin C Eckert III
Project Number: -
Project: Noble - Dale #1 TB

PAH by 8270D SIM - Quality Control
Waypoint Analytical, Inc.

Analyte	Result	Reporting Limit	Units	Spike Level	Source Result	%REC	%REC Limits	RPD	RPD Limit	Notes
---------	--------	-----------------	-------	-------------	---------------	------	-------------	-----	-----------	-------

Batch L606602 - 3550B

MS (L 92279-MS-L606602)		Source: 92279			Prepared: 03/23/2022 Analyzed: 03/24/2022					
Benzo(k)fluoranthene	0.0401	0.000437	mg/Kg	0.167	<0.000437	24	30-130			*
Indeno(1,2,3-cd)pyrene	0.0413	0.000627	"	0.167	<0.000627	24.7	30-130			*
Dibenz(a,h)anthracene	0.0415	0.000614	"	0.167	<0.000614	24.8	30-130			*
Fluorene	0.0396	0.000286	"	0.167	<0.000286	23.7	30-130			*
Fluoranthene	0.0476	0.000394	"	0.167	<0.000394	28.5	30-130			*
Naphthalene	0.0331	0.000484	"	0.167	<0.000484	19.8	30-130			*
Pyrene	0.0517	0.000643	"	0.167	<0.000643	30.9	30-130			
Chrysene	0.0338	0.000624	"	0.167	<0.000624	20.2	30-130			*
Surrogate: 4-Terphenyl-d14	28.5		"	0.333	202	28.5	33-122			*
Surrogate: 2-Fluorobiphenyl	19.4		"	0.333	150	19.4	33-115			*
Surrogate: Nitrobenzene-d5	32.4		"	0.333	172	32.4	29-110			

LCS (LCS-L606602)		Prepared: 03/23/2022 Analyzed: 03/24/2022								
Naphthalene	0.0779	0.000484	mg/Kg	0.167		46.6	30-130			
Chrysene	0.0989	0.000624	"	0.167		59.2	30-130			
Dibenz(a,h)anthracene	0.0963	0.000614	"	0.167		57.6	30-130			
Fluoranthene	0.099	0.000394	"	0.167		59.2	30-130			
Benzo(k)fluoranthene	0.0996	0.000437	"	0.167		59.6	30-130			
Indeno(1,2,3-cd)pyrene	0.0944	0.000627	"	0.167		56.5	30-130			
Anthracene	0.0916	0.000334	"	0.167		54.8	30-130			
Fluorene	0.0912	0.000286	"	0.167		54.6	30-130			
Benzo(b)fluoranthene	0.0919	0.000585	"	0.167		55	30-130			
Benzo(a)anthracene	0.115	0.000493	"	0.167		68.8	30-130			
Acenaphthene	0.0854	0.000304	"	0.167		51.1	30-130			
2-Methylnaphthalene	0.0835	0.000645	"	0.167		50	30-130			
1-Methylnaphthalene	0.083	0.000364	"	0.167		49.7	30-130			
Pyrene	0.102	0.000643	"	0.167		61	30-130			

Origins Laboratory, Inc.



The results in this report apply to the samples analyzed in accordance with the chain of custody document. This analytical report must be reproduced in its entirety.

Eagle Environmental Consulting, Inc.
8000 W 44th Ave
Wheat Ridge CO 80033

Martin C Eckert III
Project Number: -
Project: Noble - Dale #1 TB

PAH by 8270D SIM - Quality Control
Waypoint Analytical, Inc.

Analyte	Result	Reporting Limit	Units	Spike Level	Source Result	%REC	%REC Limits	RPD	RPD Limit	Notes
Batch L606602 - 3550B										
LCS (LCS-L606602)					Prepared: 03/23/2022 Analyzed: 03/24/2022					
Benzo(a)pyrene	0.115	0.000468	mg/Kg	0.167		68.8	30-130			
Surrogate: Nitrobenzene-d5	58.5		"	0.333		58.5	29-110			
Surrogate: 4-Terphenyl-d14	76.8		"	0.333		76.8	33-122			
Surrogate: 2-Fluorobiphenyl	53.1		"	0.333		53.1	33-115			
LRB (LRB-L606602)					Prepared: 03/23/2022 Analyzed: 03/24/2022					
Benzo(a)pyrene	ND	0.00067	mg/Kg				-			
Chrysene	ND	0.00067	"				-			
1-Methylnaphthalene	ND	0.00067	"				-			
2-Methylnaphthalene	ND	0.00067	"				-			
Acenaphthene	ND	0.00067	"				-			
Anthracene	ND	0.00067	"				-			
Benzo(k)fluoranthene	ND	0.00067	"				-			
Benzo(b)fluoranthene	ND	0.00067	"				-			
Pyrene	ND	0.00067	"				-			
Dibenz(a,h)anthracene	ND	0.00067	"				-			
Fluoranthene	ND	0.00067	"				-			
Fluorene	ND	0.00067	"				-			
Indeno(1,2,3-cd)pyrene	ND	0.00067	"				-			
Naphthalene	ND	0.00067	"				-			
Benzo(a)anthracene	ND	0.00067	"				-			
Surrogate: 2-Fluorobiphenyl	53.4		"	0.333		53.4	33-115			
Surrogate: 4-Terphenyl-d14	72.6		"	0.333		72.6	33-122			
Surrogate: Nitrobenzene-d5	60.3		"	0.333		60.3	29-110			

Origins Laboratory, Inc.



The results in this report apply to the samples analyzed in accordance with the chain of custody document. This analytical report must be reproduced in its entirety.

Eagle Environmental Consulting, Inc.
8000 W 44th Ave
Wheat Ridge CO 80033

Martin C Eckert III
Project Number: -
Project: Noble - Dale #1 TB

Notes and Definitions

U Sample is Non-Detect.

J Estimated Value. Analyte below reported quantitation limit.

* QC Failure

ND Analyte NOT DETECTED at or above the reporting limit

RPD Relative Percent Difference

All soil results are reported on a wet weight basis.

Origins Laboratory, Inc.



The results in this report apply to the samples analyzed in accordance with the chain of custody document. This analytical report must be reproduced in its entirety.