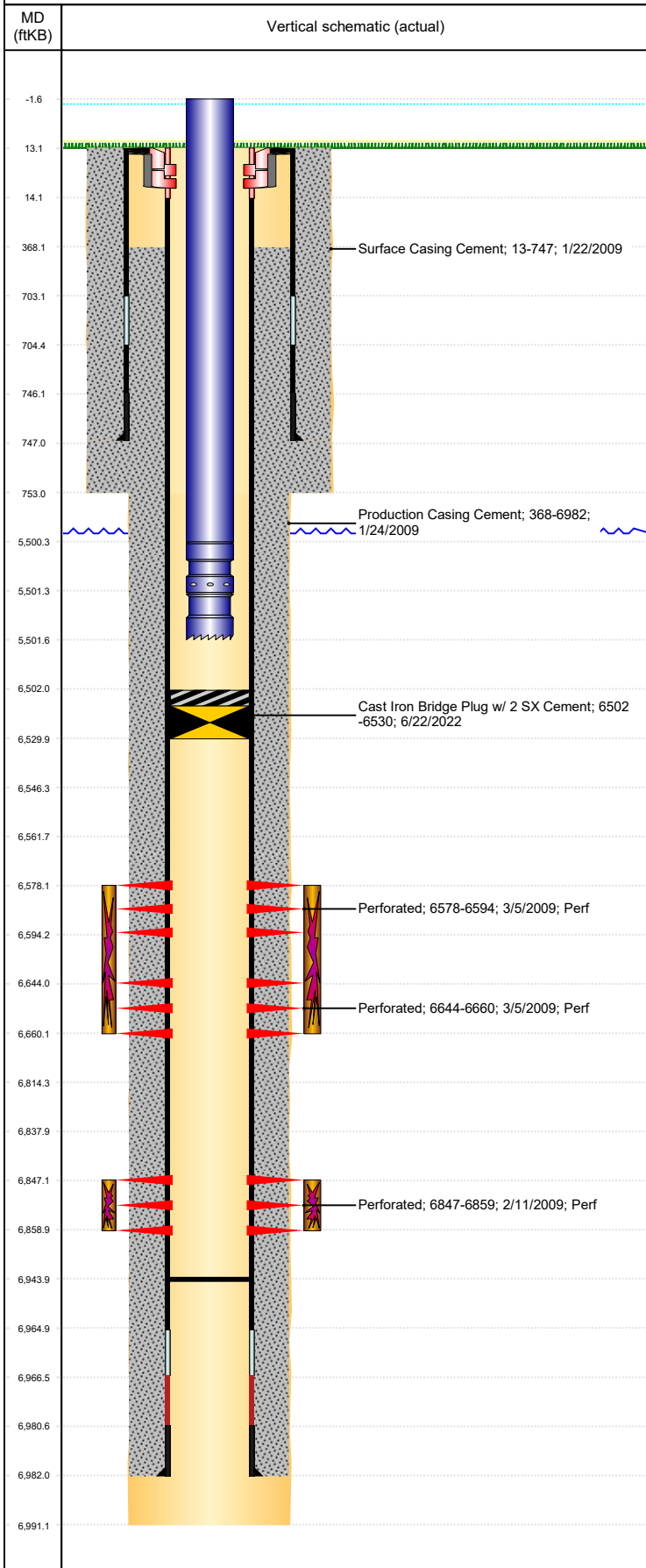




P&A Wellbore For State

Well Name: HERBST C27-20

Land, Original Hole, 7/20/2022 9:43:30 AM



Well Header									
Surface UWI 0512325575			Business Unit Rockies			Gov Auth Dist		Prod Tree Loc Land	
Orig. KB to Gnd (ft) 13.00		Original Spud Date 1/21/2009		Abandon Date		Well Sub-Status TA			High... N
Comment									
Surface Location (Congressional)									
Qtr 3 SE	Qtr 4 NW	Section 27	Twonshp 4	Twonsh... N	Range 64	Rng E/... W	Latitude (°) 40.28397951 2	Longitude (°) -104.540307113	
Wellbore Sections									
Section Des			Hole Size (in)			Act Top (ftKB)		Act Btm (ftKB)	
SURFACE			12 1/4			13.0		753.0	
PRODUCTION			7 7/8			753.0		6,991.0	
Casing Strings									
Csg Des		Run Date		OD (in)	Wt/Len (lb/ft)	Grade	Top Depth (MD) (ftKB)	Set Depth (MD) (ftKB)	
Surface		1/22/2009		8 5/8	24.00	J-55	13.1	747	
Production Casing		1/24/2009		4 1/2	11.60	M-80	13.1	6982	
Cement									
Des				Start Date		Top (ftKB)		Btm (ftKB)	
Surface Casing Cement				1/22/2009		13.0		747.0	
Production Casing Cement				1/24/2009		368.0		6,982.0	
Zone Statuses									
Zone Name	Status Date	Status	Fluid Type	Job				Prod Method	
NIOBRARA	3/17/2009	PR	Water Water	DRILLING/COMPLETION - ORIGINAL, 1/21/2009...				Flowing Flowing	
NIOBRARA	1/26/2010	Closed							
CODELL	1/26/2010	PR							
CODELL	3/10/2017	Closed							
Perforation Data									
Linked Zone		Explosive Type	Entered Shot Total	Top (ftKB)		Btm (ftKB)		Date	
NIOBRARA, Original Hole		A	32	6,578.0		6,594.0		3/5/2009	
NIOBRARA, Original Hole		B	32	6,644.0		6,660.0		3/5/2009	
CODELL, Original Hole			48	6,847.0		6,859.0		2/11/2009	
Stimulation Intervals									
Zone			Start Date		Top (ftKB)		Btm (ftKB)		
NIOBRARA, Original Hole			3/5/2009		6,578.0		6,660.0		
CODELL, Original Hole			3/5/2009		6,847.0		6,859.0		
Other In Hole									
Run Date	Des			Make		OD (in)	Top (ftKB)	Btm (ftKB)	
6/22/2022	Cast Iron Bridge Plug w/ 2 SX Cement					3.99	6,502.0	6,530.0	
Logs									
Date		Type				Depth Top (MD) (ftKB)		Btm (ftKB)	
1/24/2009		Caliper/Comp. Density/Neutron/GR/SP/ML				743		6,998.0	
1/24/2009		DIL/GR/SP/Caliper				743		6,998.0	
2/2/2009		CBL/CCL/GR				250		6,936.0	
Plug Back Total Depths									
Date		Type		Com				PBTD (ftKB)	
1/24/2009		FLOAT COLLAR						6,954	
12/22/2009		PLUG REMNANTS		85' OF RAT HOLE				6,944	