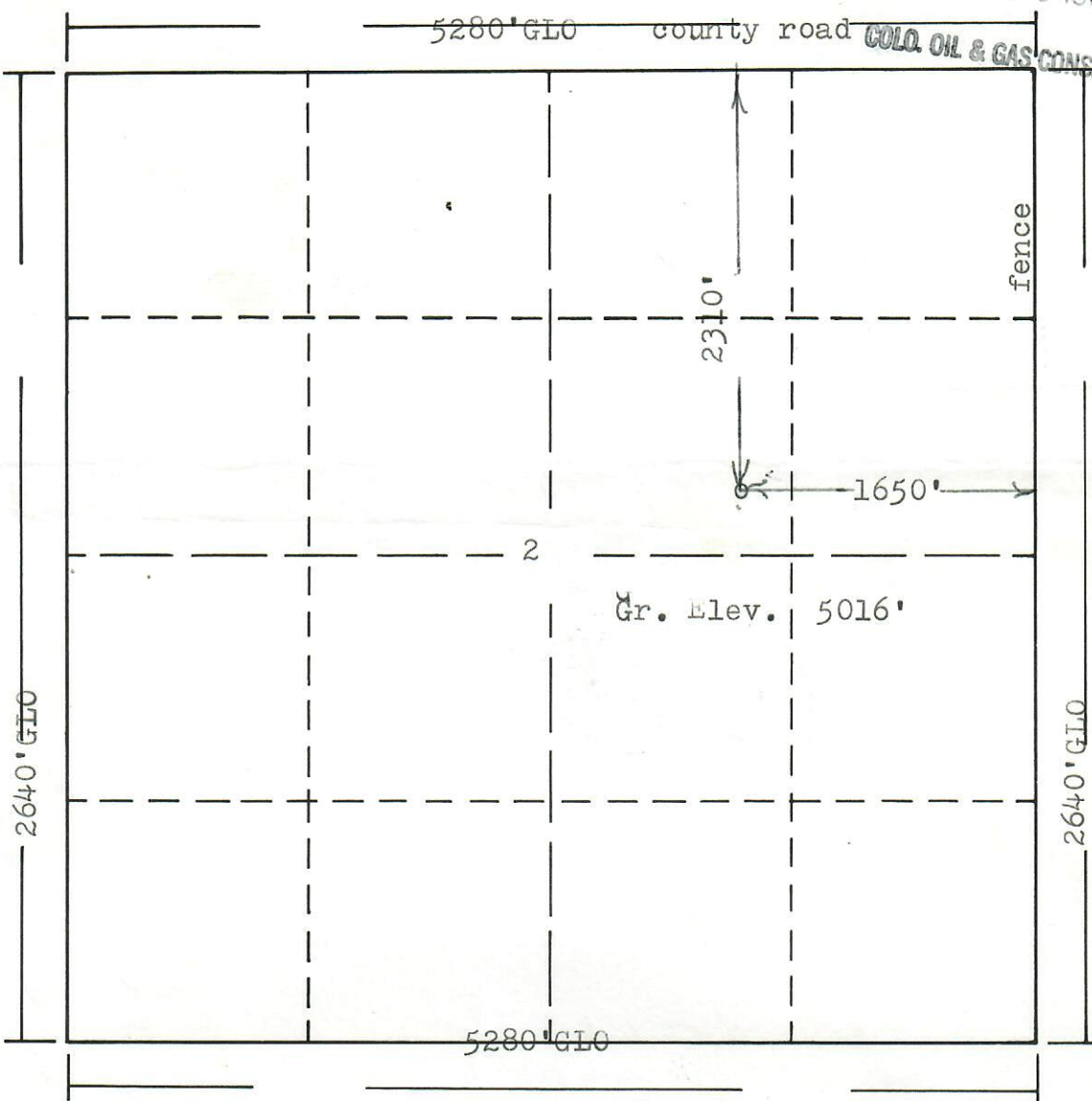




R. 61W

RECEIVED
DEC 30 1985

COLD OIL & GAS CONS. COMM.



T.
3
S

Scale: 1"=1000'

Powers Elevation of Denver, Colorado has in accordance with a request
from Suzanne Nelson for Meridian Oil Company
determined the location of No.2 Claycomb
to be CSE SW NE Section 2 , Township 3S
Range 61W of the 6th Principal Meridian,
Adams County, Colorado

I hereby certify that this plat is an
accurate representation of a correct
survey showing the location of



Date: 12-16-85

Billy G. Holloway

Licensed Land Surveyor No. 2853
State of Colorado