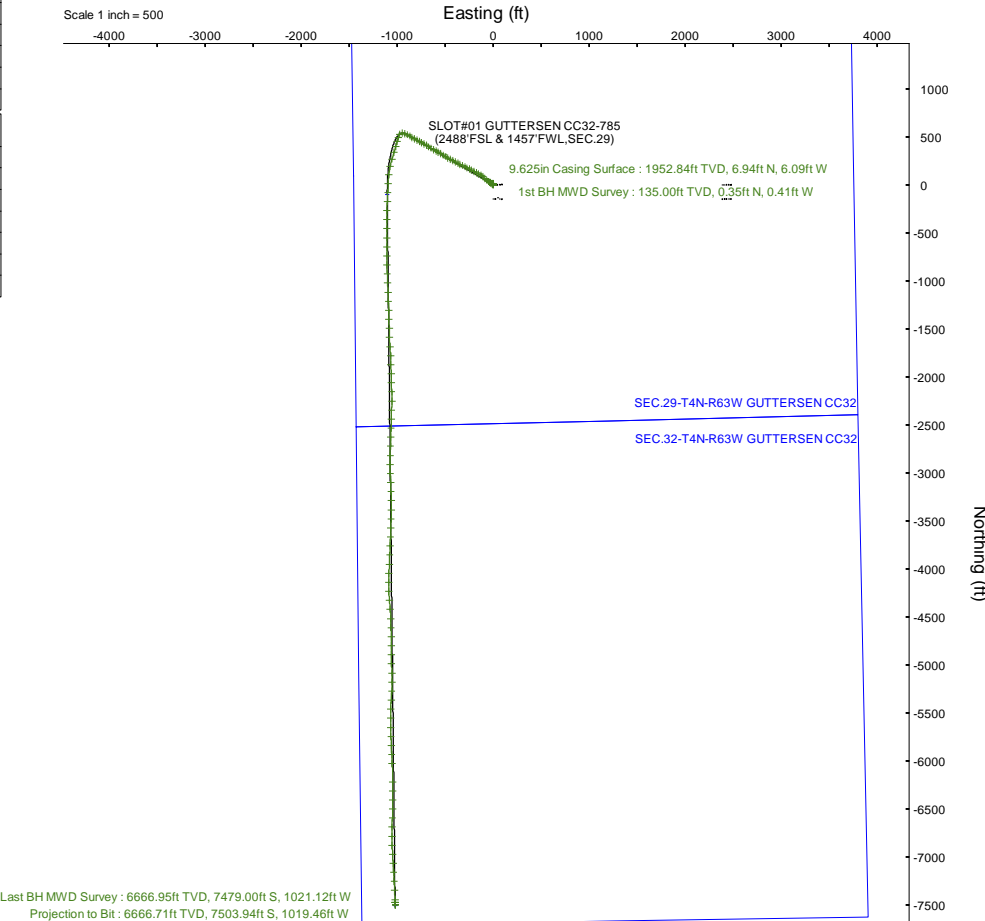
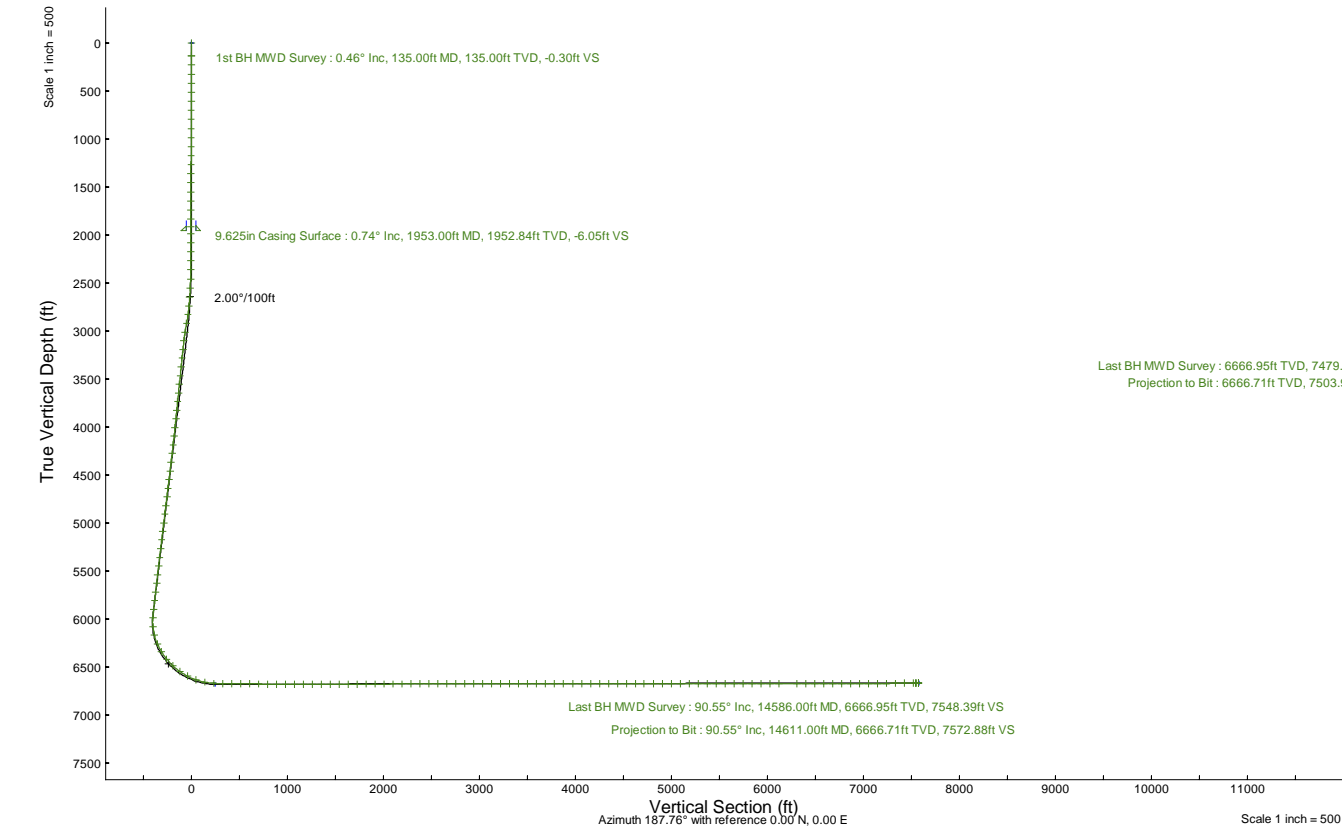


# NOBLE ENERGY, INC

Location:	COLORADO	Slot:	SLOT#01 GUTTERSEN CC32-785 (2488'FSL & 1457'FWL,SEC.29)
Field:	WELD COUNTY (NOBLE NAD 83 GRID)	Well:	GUTTERSEN CC32-785
Facility:	SEC.29-T04N-R63W	Wellbore:	GUTTERSEN CC32-785 PWB

Plot reference wellpath is GUTTERSEN CC32-785 (REV-A.0) PWP	Grid System: NAD83 / Lambert Colorado SP, Northern Zone (501), US feet
True vertical depths are referenced to RIG (4761'GL+30'KB @4791'RKB) (RKB)	North Reference: Grid north
Reference wellpath measured depths are referenced to RIG (4761'GL+30'KB @4791'RKB) (RKB)	Scale: True distance
RIG (4761'GL+30'KB @4791'RKB) (RKB) to Mean Sea Level: 4791 feet	Coordinates are in feet referenced to Slot
Mean Sea Level to Ground level (At Slot: SLOT#01 GUTTERSEN CC32-785 (2488'FSL & 1457'FWL,SEC.29)): 0 feet	Depths are in feet
Offset wellpath MDs are referenced to each path's default MD datum	Created by: guenaler on 2022-06-17; Database: WA_Denver

Location Information					
Facility Name			Grid East (US ft)	Grid North (US ft)	Latitude
SEC.29-T04N-R63W			3288517.851	1347598.752	40°16'58.5840"N
Slot			Grid East (US ft)	Grid North (US ft)	Latitude
SLOT#01 GUTTERSEN CC32-785 (2488'FSL & 1457'FWL,SEC.29)			3288517.851	1347598.752	40°16'58.5840"N
RIG (4761'GL+30'KB @4791'RKB) to Ground level (At Slot: SLOT#01 GUTTERSEN CC32-785 (2488'FSL & 1457'FWL,SEC.29))			4791ft		
Mean Sea Level to Ground level (At Slot: SLOT#01 GUTTERSEN CC32-785 (2488'FSL & 1457'FWL,SEC.29))			0ft		
RIG (4761'GL+30'KB @4791'RKB) (RKB) to Mean Sea Level			4791ft		





Actual Wellpath Report

GUTTERSEN CC32-785 AWP

Page 1 of 7



REFERENCE WELLPATH IDENTIFICATION			
Operator	NOBLE ENERGY, INC	Well	GUTTERSEN CC32-785
Field	WELD COUNTY (NOBLE NAD 83 GRID)	API/Legal	
Facility	SEC.29-T04N-R63W	Wellbore	GUTTERSEN CC32-785 AWB
Slot	SLOT#01 GUTTERSEN CC32-785 (2488'FSL & 1457'FWL,SEC.29)		

REPORT SETUP INFORMATION			
Projection System	NAD83 / Lambert Colorado SP, Northern Zone (501), US feet	Software System	WellArchitect® 6.0
North Reference	Grid	User	Guenaler
Scale	0.999957	Report Generated	6/17/2022 at 11:34:58 AM
Convergence at slot	0.67° East	Database	WA_Denver

WELLPATH LOCATION						
	Local coordinates		Grid coordinates		Geographic coordinates	
	North[ft]	East[ft]	Easting[US ft]	Northing[US ft]	Latitude	Longitude
Slot Location	0.00	0.00	3288517.85	1347598.75	40.2829400°	-104.4658300°
Facility Reference Pt			3288517.85	1347598.75	40.2829400°	-104.4658300°
Field Reference Pt			3000000.00	4454105.15	48.7761986°	-105.5000000°

WELLPATH DATUM			
Calculation method	Minimum curvature	RIG (4761'GL+30'KB@4791'RKB) (RKB) to Facility Vertical Datum	4791.00ft
Horizontal Reference Pt	Slot	RIG (4761'GL+30'KB@4791'RKB) (RKB) to Mean Sea Level	4791.00ft
Vertical Reference Pt	RIG (4761'GL+30'KB@4791'RKB) (RKB)	RIG (4761'GL+30'KB@4791'RKB) (RKB) to Ground Level at Slot (SLOT#01 GUTTERSEN CC32-785 (2488'FSL & 1457'FWL,SEC.29))	4791.00ft
MD Reference Pt	RIG (4761'GL+30'KB@4791'RKB) (RKB)	Section Origin	N 0.00, E 0.00 ft
Field Vertical Reference	Mean Sea Level	Section Azimuth	187.76°



Actual Wellpath Report  
GUTTERSEN CC32-785 AWP  
Page 2 of 7



REFERENCE WELLPATH IDENTIFICATION			
Operator	NOBLE ENERGY, INC	Well	GUTTERSEN CC32-785
Field	WELD COUNTY (NOBLE NAD 83 GRID)	API/Legal	
Facility	SEC.29-T04N-R63W	Wellbore	GUTTERSEN CC32-785 AWB
Slot	SLOT#01 GUTTERSEN CC32-785 (2488'FSL & 1457'FWL,SEC.29)		

WELLPATH DATA (156 stations)										
MD [ft]	Inclination [°]	Azimuth [°]	TVD [ft]	Vert Sect [ft]	North [ft]	East [ft]	Latitude	Longitude	DLS [°/100ft]	Comments
0.00	0.000	310.860	0.00	0.00	0.00	0.00	40.2829400	-104.4658300	0.00	
135.00	0.460	310.860	135.00	-0.30	0.35	-0.41	40.2829410	-104.4658315	0.34	1st BH MWD Survey
229.00	0.520	290.330	229.00	-0.59	0.75	-1.10	40.2829421	-104.4658339	0.20	
324.00	0.550	317.170	323.99	-0.98	1.23	-1.81	40.2829434	-104.4658364	0.26	
418.00	0.760	308.430	417.99	-1.58	1.95	-2.60	40.2829454	-104.4658393	0.25	
512.00	1.150	326.500	511.97	-2.61	3.13	-3.61	40.2829487	-104.4658428	0.52	
607.00	1.120	308.530	606.95	-3.80	4.50	-4.87	40.2829525	-104.4658473	0.37	
701.00	0.220	34.850	700.95	-4.43	5.22	-5.48	40.2829545	-104.4658494	1.20	
796.00	0.470	92.400	795.95	-4.63	5.35	-4.99	40.2829549	-104.4658477	0.42	
890.00	0.990	88.360	889.94	-4.80	5.36	-3.79	40.2829548	-104.4658434	0.56	
985.00	1.130	107.010	984.92	-4.78	5.11	-2.07	40.2829541	-104.4658372	0.39	
1079.00	0.100	160.160	1078.92	-4.56	4.76	-1.16	40.2829531	-104.4658340	1.14	
1173.00	0.140	56.850	1172.92	-4.56	4.75	-1.04	40.2829531	-104.4658335	0.20	
1268.00	0.560	338.640	1267.91	-5.05	5.24	-1.11	40.2829544	-104.4658338	0.58	
1362.00	0.560	342.060	1361.91	-5.86	6.11	-1.42	40.2829568	-104.4658348	0.04	
1456.00	1.030	7.400	1455.90	-7.12	7.38	-1.45	40.2829603	-104.4658349	0.61	
1551.00	0.590	322.940	1550.89	-8.32	8.62	-1.63	40.2829637	-104.4658355	0.77	
1645.00	0.960	310.380	1644.88	-9.09	9.52	-2.53	40.2829662	-104.4658387	0.43	
1740.00	0.870	231.810	1739.87	-9.00	9.59	-3.70	40.2829664	-104.4658429	1.22	
1834.00	0.930	214.000	1833.86	-7.80	8.51	-4.69	40.2829635	-104.4658464	0.30	
1910.00	1.180	223.010	1909.85	-6.61	7.43	-5.57	40.2829606	-104.4658496	0.39	
1984.00	0.460	250.740	1983.84	-5.85	6.77	-6.37	40.2829588	-104.4658525	1.08	
2078.00	0.430	321.550	2077.84	-5.92	6.93	-6.94	40.2829592	-104.4658546	0.55	
2173.00	0.280	99.300	2172.84	-6.16	7.17	-6.93	40.2829599	-104.4658546	0.70	
2268.00	1.070	285.930	2267.83	-6.28	7.37	-7.56	40.2829605	-104.4658568	1.42	
2362.00	3.700	294.750	2361.74	-7.30	8.88	-11.16	40.2829647	-104.4658696	2.82	
2457.00	5.820	299.330	2456.41	-9.96	12.53	-18.14	40.2829750	-104.4658945	2.27	
2551.00	7.380	302.360	2549.79	-14.23	18.09	-27.40	40.2829905	-104.4659274	1.70	
2646.00	8.800	301.880	2643.84	-19.74	25.20	-38.72	40.2830104	-104.4659677	1.50	
2740.00	11.630	306.770	2736.34	-27.27	34.67	-52.42	40.2830368	-104.4660164	3.15	
2835.00	13.890	310.830	2828.99	-38.14	47.86	-68.72	40.2830736	-104.4660743	2.56	
2929.00	16.180	314.220	2919.77	-52.08	64.37	-86.65	40.2831195	-104.4661378	2.61	
3024.00	16.910	309.540	3010.84	-67.22	82.40	-106.79	40.2831696	-104.4662093	1.60	
3118.00	17.080	300.140	3100.75	-79.68	98.04	-129.27	40.2832132	-104.4662892	2.93	
3213.00	16.860	297.740	3191.62	-89.69	111.45	-153.53	40.2832508	-104.4663756	0.77	
3308.00	16.830	297.700	3282.54	-99.09	124.26	-177.90	40.2832868	-104.4664624	0.03	
3402.00	16.760	298.060	3372.53	-108.43	136.96	-201.91	40.2833224	-104.4665479	0.13	
3497.00	16.690	298.090	3463.51	-117.92	149.83	-226.03	40.2833585	-104.4666338	0.07	
3591.00	16.600	297.050	3553.57	-127.05	162.29	-249.90	40.2833934	-104.4667188	0.33	
3686.00	17.010	297.220	3644.51	-136.16	174.82	-274.34	40.2834286	-104.4668059	0.43	
3780.00	17.020	297.730	3734.40	-145.43	187.51	-298.75	40.2834642	-104.4668929	0.16	
3875.00	16.800	296.880	3825.29	-154.68	200.18	-323.30	40.2834998	-104.4669803	0.35	
3969.00	16.780	297.380	3915.29	-163.68	212.56	-347.46	40.2835346	-104.4670664	0.16	
4064.00	16.900	296.570	4006.21	-172.74	225.05	-371.99	40.2835696	-104.4671538	0.28	
4158.00	17.890	298.020	4095.91	-182.14	237.94	-396.96	40.2836058	-104.4672427	1.15	



Actual Wellpath Report  
GUTTERSEN CC32-785 AWP  
Page 3 of 7



REFERENCE WELLPATH IDENTIFICATION			
Operator	NOBLE ENERGY, INC	Well	GUTTERSEN CC32-785
Field	WELD COUNTY (NOBLE NAD 83 GRID)	API/Legal	
Facility	SEC.29-T04N-R63W	Wellbore	GUTTERSEN CC32-785 AWB
Slot	SLOT#01 GUTTERSEN CC32-785 (2488'FSL & 1457'FWL,SEC.29)		

WELLPATH DATA (156 stations)										
MD [ft]	Inclination [°]	Azimuth [°]	TVD [ft]	Vert Sect [ft]	North [ft]	East [ft]	Latitude	Longitude	DLS [°/100ft]	Comments
4253.00	17.930	298.230	4186.31	-192.31	251.71	-422.72	40.2836444	-104.4673345	0.08	
4347.00	17.750	297.860	4275.79	-202.29	265.25	-448.14	40.2836824	-104.4674250	0.23	
4442.00	17.780	299.630	4366.26	-212.67	279.19	-473.55	40.2837215	-104.4675155	0.57	
4537.00	17.770	300.380	4456.72	-223.65	293.69	-498.66	40.2837621	-104.4676049	0.24	
4631.00	17.740	300.010	4546.25	-234.58	308.11	-523.44	40.2838024	-104.4676931	0.12	
4726.00	17.680	300.420	4636.75	-245.62	322.65	-548.41	40.2838432	-104.4677820	0.15	
4820.00	17.800	299.990	4726.28	-256.55	337.06	-573.16	40.2838835	-104.4678701	0.19	
4915.00	17.640	300.320	4816.77	-267.57	351.59	-598.17	40.2839242	-104.4679591	0.20	
5009.00	18.070	300.110	4906.24	-278.57	366.09	-623.07	40.2839648	-104.4680478	0.46	
5104.00	17.890	300.410	4996.60	-289.79	380.87	-648.40	40.2840061	-104.4681379	0.21	
5198.00	17.550	299.690	5086.14	-300.65	395.20	-673.16	40.2840463	-104.4682261	0.43	
5292.00	17.460	299.680	5175.79	-311.20	409.20	-697.73	40.2840855	-104.4683136	0.10	
5387.00	17.250	299.480	5266.46	-321.73	423.19	-722.37	40.2841247	-104.4684013	0.23	
5482.00	17.220	299.260	5357.20	-332.10	436.99	-746.90	40.2841633	-104.4684886	0.08	
5576.00	17.580	299.590	5446.90	-342.48	450.80	-771.39	40.2842020	-104.4685758	0.40	
5670.00	17.460	299.580	5536.54	-352.99	464.77	-795.99	40.2842411	-104.4686634	0.13	
5765.00	17.550	299.260	5627.14	-363.54	478.81	-820.88	40.2842805	-104.4687520	0.14	
5860.00	17.630	299.790	5717.69	-374.18	492.96	-845.86	40.2843201	-104.4688410	0.19	
5954.00	17.530	299.270	5807.30	-384.71	506.95	-870.57	40.2843593	-104.4689289	0.20	
6049.00	17.720	298.510	5897.84	-395.08	520.85	-895.75	40.2843982	-104.4690186	0.31	
6143.00	18.030	292.550	5987.31	-403.86	533.26	-921.76	40.2844331	-104.4691113	1.97	
6238.00	17.740	259.900	6077.95	-403.17	536.36	-949.66	40.2844425	-104.4692112	10.43	
6332.00	18.110	223.460	6167.66	-386.86	523.21	-973.88	40.2844072	-104.4692985	11.76	
6427.00	23.990	198.310	6256.46	-355.80	494.07	-990.15	40.2843278	-104.4693581	11.22	
6521.00	30.870	194.590	6339.85	-313.01	452.54	-1002.24	40.2842141	-104.4694031	7.54	
6616.00	39.560	195.450	6417.39	-258.73	399.69	-1016.47	40.2840695	-104.4694563	9.16	
6710.00	46.970	196.810	6485.80	-195.04	337.86	-1034.40	40.2839004	-104.4695232	7.94	
6805.00	55.050	197.030	6545.52	-122.21	267.28	-1055.88	40.2837074	-104.4696031	8.51	
6899.00	63.140	191.580	6593.79	-42.17	189.20	-1075.63	40.2834937	-104.4696771	9.94	
6994.00	70.340	186.360	6631.30	44.99	103.07	-1089.11	40.2832577	-104.4697290	9.10	
7088.00	78.150	181.660	6656.82	135.16	12.91	-1095.36	40.2830104	-104.4697552	9.60	
7183.00	86.520	182.960	6669.48	228.80	-81.07	-1099.16	40.2827526	-104.4697727	8.91	
7278.00	89.970	183.630	6672.39	323.46	-175.86	-1104.62	40.2824926	-104.4697962	3.70	
7372.00	89.410	180.560	6672.89	416.98	-269.78	-1108.06	40.2822349	-104.4698124	3.32	
7466.00	89.320	179.490	6673.94	510.12	-363.78	-1108.10	40.2819769	-104.4698165	1.14	
7561.00	89.290	180.960	6675.09	604.29	-458.76	-1108.47	40.2817162	-104.4698218	1.55	
7655.00	89.260	180.780	6676.28	697.60	-552.75	-1109.90	40.2814583	-104.4698308	0.19	
7750.00	89.110	180.670	6677.63	791.88	-647.73	-1111.10	40.2811976	-104.4698391	0.20	
7845.00	89.260	179.810	6678.98	886.05	-742.72	-1111.50	40.2809369	-104.4698445	0.92	
7939.00	89.630	177.990	6679.89	978.92	-836.69	-1109.69	40.2806789	-104.4698419	1.98	
8033.00	90.250	177.130	6679.99	1071.43	-930.61	-1105.69	40.2804210	-104.4698315	1.13	
8128.00	90.150	177.190	6679.66	1164.81	-1025.49	-1100.99	40.2801604	-104.4698186	0.12	
8222.00	90.220	177.760	6679.35	1257.30	-1119.40	-1096.84	40.2799026	-104.4698076	0.61	
8317.00	90.220	177.840	6678.99	1350.86	-1214.33	-1093.20	40.2796419	-104.4697985	0.08	
8411.00	90.340	178.400	6678.53	1443.53	-1308.27	-1090.11	40.2793839	-104.4697914	0.61	



Actual Wellpath Report  
GUTTERSEN CC32-785 AWP  
Page 4 of 7



REFERENCE WELLPATH IDENTIFICATION			
Operator	NOBLE ENERGY, INC	Well	GUTTERSEN CC32-785
Field	WELD COUNTY (NOBLE NAD 83 GRID)	API/Legal	
Facility	SEC.29-T04N-R63W	Wellbore	GUTTERSEN CC32-785 AWB
Slot	SLOT#01 GUTTERSEN CC32-785 (2488'FSL & 1457'FWL,SEC.29)		

WELLPATH DATA (156 stations)										
MD [ft]	Inclination [°]	Azimuth [°]	TVD [ft]	Vert Sect [ft]	North [ft]	East [ft]	Latitude	Longitude	DLS [°/100ft]	Comments
8506.00	90.400	178.470	6677.92	1537.27	-1403.24	-1087.52	40.2791232	-104.4697860	0.10	
8600.00	90.150	178.270	6677.47	1630.01	-1497.20	-1084.85	40.2788652	-104.4697804	0.34	
8695.00	90.000	177.990	6677.34	1723.67	-1592.15	-1081.75	40.2786045	-104.4697732	0.33	
8789.00	90.220	175.300	6677.16	1815.90	-1685.98	-1076.24	40.2783468	-104.4697574	2.87	
8884.00	90.090	177.400	6676.90	1909.02	-1780.78	-1070.20	40.2780864	-104.4697397	2.21	
8979.00	90.280	178.930	6676.60	2002.68	-1875.73	-1067.16	40.2778257	-104.4697327	1.62	
9073.00	90.220	178.080	6676.19	2095.46	-1969.69	-1064.70	40.2775677	-104.4697279	0.91	
9168.00	90.310	178.060	6675.75	2189.10	-2064.64	-1061.50	40.2773070	-104.4697203	0.10	
9262.00	90.370	178.800	6675.19	2281.85	-2158.60	-1058.93	40.2770490	-104.4697150	0.79	
9357.00	90.090	180.210	6674.81	2375.86	-2253.59	-1058.11	40.2767882	-104.4697160	1.51	
9451.00	90.150	181.390	6674.61	2469.17	-2347.58	-1059.42	40.2765303	-104.4697247	1.26	
9545.00	90.030	181.800	6674.46	2562.62	-2441.54	-1062.04	40.2762725	-104.4697379	0.45	
9640.00	90.060	182.560	6674.39	2657.17	-2536.47	-1065.65	40.2760120	-104.4697548	0.80	
9735.00	90.180	182.370	6674.19	2751.77	-2631.39	-1069.74	40.2757516	-104.4697734	0.24	
9829.00	90.090	180.780	6673.97	2845.22	-2725.35	-1072.32	40.2754938	-104.4697866	1.69	
9924.00	90.000	180.370	6673.89	2939.47	-2820.34	-1073.27	40.2752331	-104.4697940	0.44	
10018.00	90.090	180.680	6673.82	3032.72	-2914.34	-1074.13	40.2749751	-104.4698010	0.34	
10113.00	89.630	178.250	6674.05	3126.72	-3009.33	-1073.25	40.2747144	-104.4698018	2.60	
10207.00	89.970	176.740	6674.38	3219.21	-3103.23	-1069.14	40.2744565	-104.4697909	1.65	
10301.00	90.030	179.310	6674.38	3311.85	-3197.17	-1065.90	40.2741986	-104.4697832	2.73	
10396.00	89.910	178.980	6674.43	3405.77	-3292.16	-1064.48	40.2739378	-104.4697821	0.37	
10490.00	89.780	180.420	6674.68	3498.84	-3386.15	-1063.99	40.2736798	-104.4697843	1.54	
10585.00	90.060	181.130	6674.82	3593.14	-3481.15	-1065.27	40.2734191	-104.4697928	0.80	
10679.00	90.150	181.890	6674.65	3686.58	-3575.11	-1067.75	40.2731613	-104.4698056	0.81	
10774.00	89.850	182.670	6674.65	3781.14	-3670.04	-1071.53	40.2729008	-104.4698231	0.88	
10868.00	90.280	182.640	6674.54	3874.77	-3763.93	-1075.89	40.2726432	-104.4698426	0.46	
10963.00	89.750	182.320	6674.51	3969.36	-3858.85	-1080.00	40.2723829	-104.4698613	0.65	
11057.00	90.060	182.470	6674.67	4062.95	-3952.76	-1083.92	40.2721252	-104.4698793	0.37	
11152.00	90.060	181.610	6674.57	4157.48	-4047.70	-1087.31	40.2718647	-104.4698954	0.91	
11246.00	89.970	180.270	6674.55	4250.81	-4141.69	-1088.85	40.2716068	-104.4699048	1.43	
11341.00	89.880	178.380	6674.67	4344.77	-4236.68	-1087.73	40.2713460	-104.4699047	1.99	
11435.00	90.310	174.760	6674.51	4436.97	-4330.49	-1082.11	40.2710884	-104.4698885	3.88	
11529.00	89.880	175.760	6674.36	4528.74	-4424.17	-1074.34	40.2708310	-104.4698646	1.16	
11624.00	90.150	177.660	6674.33	4621.97	-4519.01	-1068.89	40.2705705	-104.4698490	2.02	
11718.00	89.940	179.030	6674.26	4714.70	-4612.97	-1066.17	40.2703125	-104.4698432	1.47	
11813.00	89.970	179.030	6674.33	4808.60	-4707.95	-1064.56	40.2700518	-104.4698414	0.03	
11908.00	90.280	179.490	6674.13	4902.56	-4802.94	-1063.34	40.2697910	-104.4698409	0.58	
12002.00	90.060	179.150	6673.85	4995.54	-4896.94	-1062.22	40.2695330	-104.4698408	0.43	
12097.00	90.060	178.300	6673.75	5089.36	-4991.91	-1060.11	40.2692722	-104.4698372	0.89	
12191.00	90.250	178.940	6673.49	5182.16	-5085.88	-1057.84	40.2690142	-104.4698330	0.71	
12285.00	89.970	180.250	6673.31	5275.21	-5179.88	-1057.18	40.2687562	-104.4698345	1.43	
12380.00	90.220	181.730	6673.16	5369.54	-5274.86	-1058.82	40.2684955	-104.4698444	1.58	
12475.00	90.120	184.530	6672.87	5464.22	-5369.71	-1064.01	40.2682354	-104.4698669	2.95	
12569.00	90.180	182.250	6672.63	5557.94	-5463.54	-1069.57	40.2679780	-104.4698907	2.43	
12664.00	90.150	179.260	6672.35	5652.22	-5558.52	-1070.82	40.2677173	-104.4698992	3.15	



Actual Wellpath Report

GUTTERSEN CC32-785 AWP

Page 5 of 7



REFERENCE WELLPATH IDENTIFICATION			
Operator	NOBLE ENERGY, INC	Well	GUTTERSEN CC32-785
Field	WELD COUNTY (NOBLE NAD 83 GRID)	API/Legal	
Facility	SEC.29-T04N-R63W	Wellbore	GUTTERSEN CC32-785 AWB
Slot	SLOT#01 GUTTERSEN CC32-785 (2488'FSL & 1457'FWL,SEC.29)		

WELLPATH DATA (156 stations) † = interpolated, ‡ = extrapolated station										
MD [ft]	Inclination [°]	Azimuth [°]	TVD [ft]	Vert Sect [ft]	North [ft]	East [ft]	Latitude	Longitude	DLS [°/100ft]	Comments
12759.00	89.940	178.860	6672.28	5746.13	-5653.51	-1069.26	40.2674566	-104.4698975	0.48	
12853.00	90.000	177.710	6672.33	5838.84	-5747.46	-1066.45	40.2671986	-104.4698914	1.23	
12948.00	90.090	177.520	6672.25	5932.35	-5842.38	-1062.49	40.2669379	-104.4698812	0.22	
13042.00	90.000	177.240	6672.18	6024.82	-5936.28	-1058.19	40.2666801	-104.4698697	0.31	
13136.00	89.880	177.510	6672.28	6117.27	-6030.18	-1053.89	40.2664222	-104.4698582	0.31	
13326.00	90.060	178.900	6672.38	6304.63	-6220.09	-1047.94	40.2659008	-104.4698447	0.74	
13420.00	89.910	180.220	6672.40	6397.67	-6314.08	-1047.22	40.2656427	-104.4698461	1.41	
13515.00	90.000	180.760	6672.48	6491.90	-6409.08	-1048.03	40.2653820	-104.4698529	0.58	
13609.00	89.910	181.230	6672.55	6585.25	-6503.06	-1049.66	40.2651241	-104.4698627	0.51	
13703.00	90.120	181.590	6672.53	6678.67	-6597.03	-1051.97	40.2648662	-104.4698749	0.44	
13798.00	89.820	182.220	6672.58	6773.17	-6691.98	-1055.13	40.2646057	-104.4698902	0.73	
13892.00	90.180	178.960	6672.58	6866.43	-6785.96	-1056.10	40.2643478	-104.4698975	3.49	
13987.00	90.620	178.230	6671.91	6960.21	-6880.93	-1053.77	40.2640871	-104.4698931	0.90	
14081.00	90.370	176.880	6671.10	7052.72	-6974.84	-1049.76	40.2638292	-104.4698827	1.46	
14175.00	90.180	176.530	6670.65	7144.97	-7068.68	-1044.36	40.2635714	-104.4698672	0.42	
14270.00	90.520	176.450	6670.07	7238.13	-7163.50	-1038.54	40.2633110	-104.4698503	0.37	
14364.00	90.680	176.740	6669.09	7330.35	-7257.33	-1032.96	40.2630533	-104.4698342	0.35	
14459.00	90.400	177.550	6668.19	7423.72	-7352.21	-1028.23	40.2627927	-104.4698212	0.90	
14553.00	90.680	176.390	6667.30	7516.05	-7446.07	-1023.26	40.2625349	-104.4698073	1.27	
14586.00	90.550	176.190	6666.95	7548.39	-7479.00	-1021.12	40.2624445	-104.4698011	0.72	Last BH MWD Survey
14611.00‡	90.550	176.190	6666.71	7572.88	-7503.94	-1019.46	40.2623759	-104.4697962	0.00	Projection to Bit

HOLE & CASING SECTIONS - Ref Wellbore: GUTTERSEN CC32-785 AWB      Ref Wellpath: GUTTERSEN CC32-785 AWP									
String/Diameter	Start MD [ft]	End MD [ft]	Interval [ft]	Start TVD [ft]	End TVD [ft]	Start N/S [ft]	Start E/W [ft]	End N/S [ft]	End E/W [ft]
9.625in Casing Surface	30.00	1953.00	1923.00	30.00	1952.84	0.02	-0.02	6.94	-6.09
8.5in Open Hole	1953.00	14586.00	12633.00	1952.84	6666.95	6.94	-6.09	-7479.00	-1021.12





Actual Wellpath Report

GUTTERSEN CC32-785 AWP

Page 6 of 7



REFERENCE WELLPATH IDENTIFICATION			
Operator	NOBLE ENERGY, INC	Well	GUTTERSEN CC32-785
Field	WELD COUNTY (NOBLE NAD 83 GRID)	API/Legal	
Facility	SEC.29-T04N-R63W	Wellbore	GUTTERSEN CC32-785 AWB
Slot	SLOT#01 GUTTERSEN CC32-785 (2488'FSL & 1457'FWL,SEC.29)		

TARGETS								
Name	TVD [ft]	North [ft]	East [ft]	Grid East [US ft]	Grid North [US ft]	Latitude	Longitude	Shape
SEC.29-T4N-R63W GUTTERSEN CC32	0.00	0.00	0.00	3288517.85	1347598.75	40.2829400	-104.4658300	polygon
	2D Polygon: dimensions not calculated							
SEC.32-T4N-R63W GUTTERSEN CC32	0.00	0.00	0.00	3288517.85	1347598.75	40.2829400	-104.4658300	polygon
	2D Polygon: dimensions not calculated							
GUTTERSEN CC32-785 BHL PLAN (200'FSL & 350'FWL,SEC.32)	6665.00	-7507.84	-1023.52	3287494.38	1340091.25	40.2623654	-104.4698108	point
GUTTERSEN CC32-785 LP PLAN (2417'FSL & 350'FWL,SEC.29)	6679.00	-99.41	-1105.68	3287412.22	1347499.35	40.2827025	-104.4697968	point

WELLPATH COMPOSITION - Ref Wellbore: GUTTERSEN CC32-785 AWB      Ref Wellpath: GUTTERSEN CC32-785 AWP					
Start MD [ft]	End MD [ft]	Positional Uncertainty Model	Log Name/Comment	Wellbore	Survey Date
0.00	1910.00	OWSG MWD rev2 - Standard	13.5 Surface Hole OWSG MWD rev2 - Standard <135' - 1910'>	GUTTERSEN CC32-785 AWB	5/19/2022
1910.00	14611.00	OWSG MWD rev2 - Standard	8.5" ATC Monobore OWSG MWD rev2 (MS+IFR1) <1984'- 14586'>	GUTTERSEN CC32-785 AWB	5/19/2022



Actual Wellpath Report  
GUTTERSEN CC32-785 AWP  
Page 7 of 7



REFERENCE WELLPATH IDENTIFICATION			
Operator	NOBLE ENERGY, INC	Well	GUTTERSEN CC32-785
Field	WELD COUNTY (NOBLE NAD 83 GRID)	API/Legal	
Facility	SEC.29-T04N-R63W	Wellbore	GUTTERSEN CC32-785 AWB
Slot	SLOT#01 GUTTERSEN CC32-785 (2488'FSL & 1457'FWL,SEC.29)		

WELLPATH COMMENTS				
MD [ft]	Inclination [°]	Azimuth [°]	TVD [ft]	Comment
135.00	0.460	310.860	135.00	1st BH MWD Survey
14586.00	90.550	176.190	6666.95	Last BH MWD Survey
14611.00	90.550	176.190	6666.71	Projection to Bit