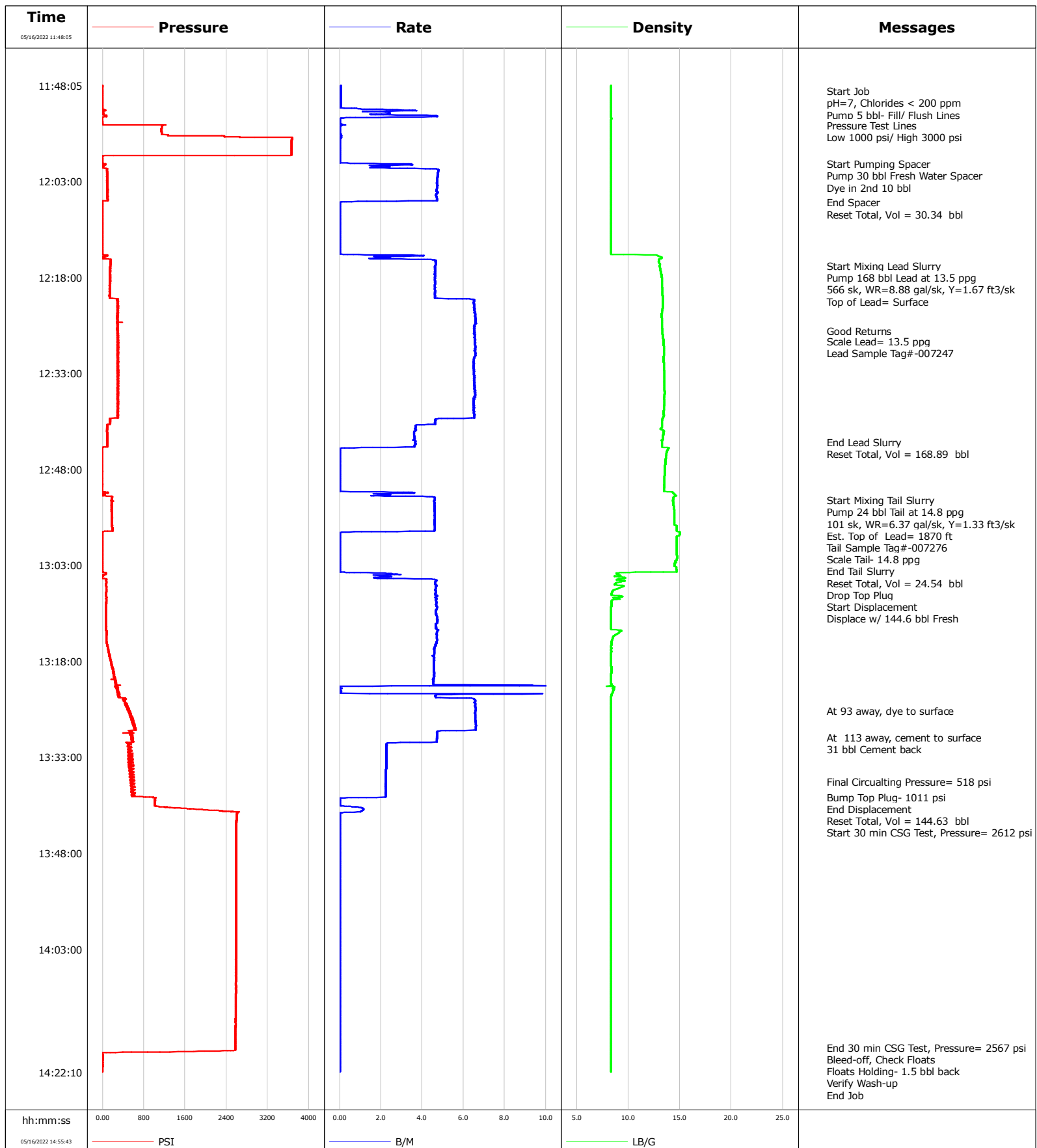


Well Guttersen CC32-775
Field Wattenberg
Engineer Thomas Bailey
Country United States

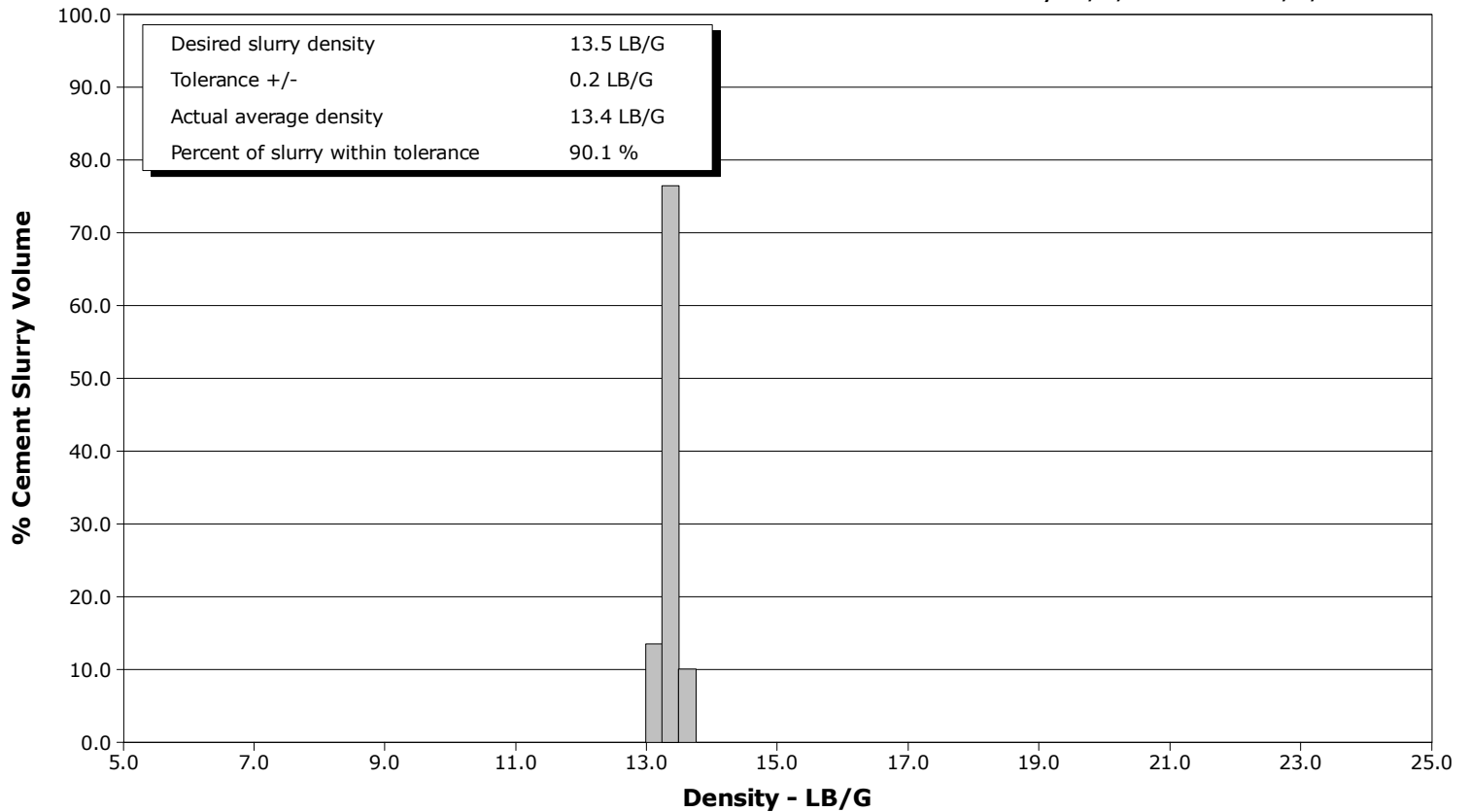
Client Chevron
SIR No. EOHC-00639
Job Type 9 5/8" Surface
Job Date 05-16-2022



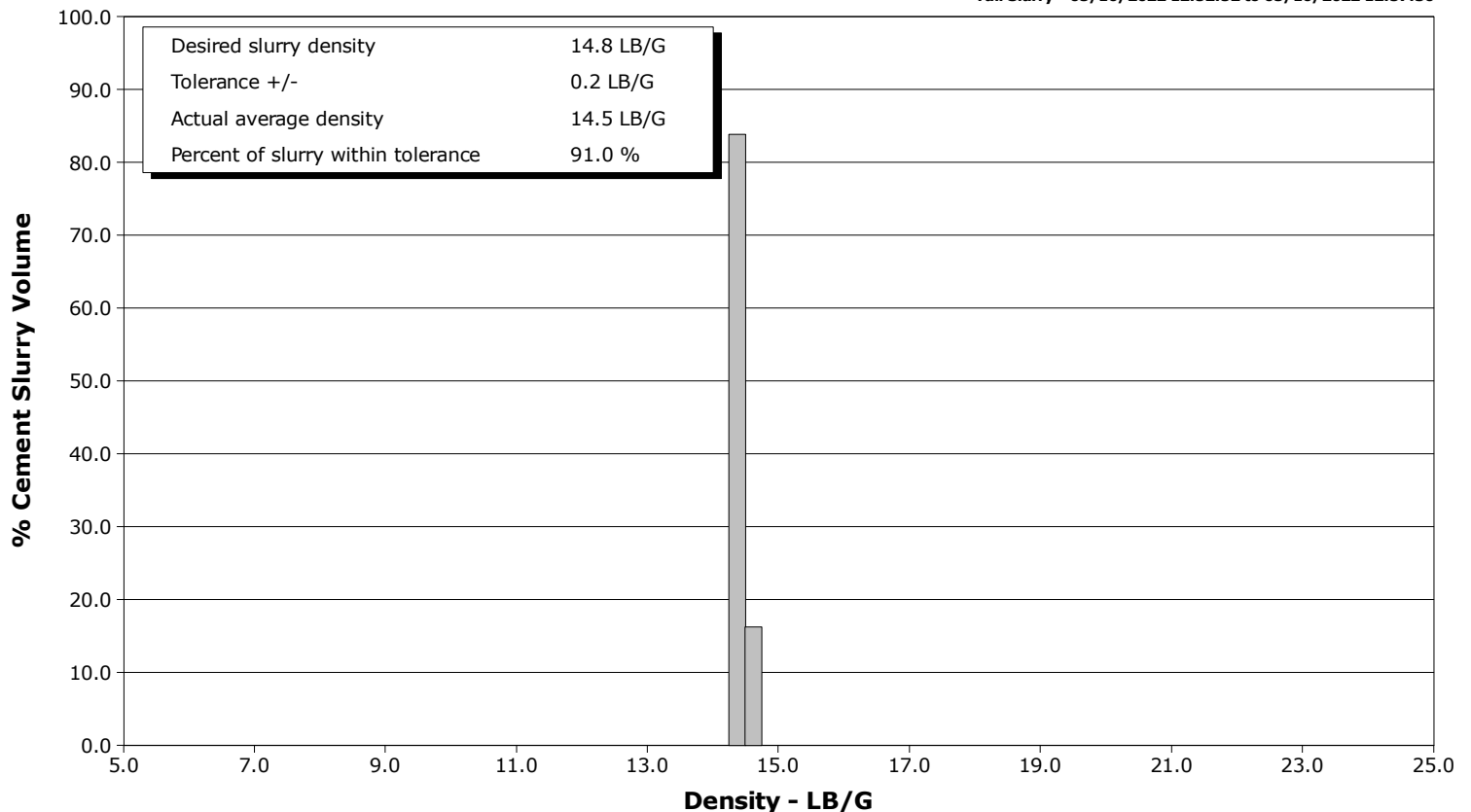
Well Guttersen CC32-775
Field Wattenberg
Engineer Thomas Bailey
Country United States

Client Chevron
SIR No. EOHC-00639
Job Type 9 5/8" Surface
Job Date 05-16-2022

Lead Slurry - 05/16/2022 12:16:15 to 05/16/2022 12:43:47



Tail Slurry - 05/16/2022 12:52:52 to 05/16/2022 12:57:30



Cementing Service Report

				Customer Chevron			Job Number EOHC-00639	
Well Guttersen CC32-775			Location (legal) HP 517		Schlumberger Location			Job Start May/16/2022
Field Wattenberg		Formation Name/Type		Deviation deg	Bit Size in		Well MD 1945.0 ft	Well TVD 1945.0 ft
County Weld		State/Province Colorado		BHP psi	BHST 114 degF	BHCT 91 degF	Pore Press. Gradient lb/gal	
Well Master 0065881927		API/UWI 05-123-49268-00-00						
Rig Name HP 517		Drilled For Oil & Gas		Service Via Land		Casing/ Liner		
						Depth, ft	Size, in	Weight, lb/ft
							Grade	Thread
Offshore Zone N/a		Well Class New		Well Type Development		110.0	16.0	36.94
						1945.0	9.6	36.0
Drilling Fluid Type		Max. Density lb/gal		Plastic Viscosity cP		Tubing/Drill Pipe		
						T/D	Depth, ft	Size, in
							Weight, lb/ft	Grade
								Thread
Service Line Cementing		Job Type 9 5/8" Surface						
Max. Allowed Tub. Press psi		Max. Allowed Ann. Press psi		WH Connection Single Cement head		Perforations/Open Hole		
						Top, ft	Bottom, ft	shot/ft
								No. of Shots
								Total Interval
						ft	ft	ft
						ft	ft	Diameter
						ft	ft	in
						Treat Down Casing	Displacement 144.6 bbl	Packer Type
								Packer Depth
						ft		ft
						Tubing Vol. bbl	Casing Vol. 148.1 bbl	Annular Vol. 174.2 bbl
								Openhole Vol. 159.7 bbl
Casing/Tubing Secured <input type="checkbox"/>		1 Hole Vol. Circulated prior to Cement <input type="checkbox"/>		Casing Tools			Squeeze Job	
Lift Pressure 518 psi				Shoe Type Float			Squeeze Type	
Pipe Rotated <input type="checkbox"/>		Pipe Reciprocated <input type="checkbox"/>		Shoe Depth 1945.0 ft			Tool Type	
No. Centralizers 17		Top Plugs 1		Bottom Plugs		Tool Depth ft		
Cement Head Type Single				Stage Tool Type			Tool Depth ft	
				Stage Tool Depth ft			Tail Pipe Size in	
Job Scheduled For May/16/2022 07:30		Arrived on Location May/16/2022 00:07		Leave Location May/16/2022 15:30		Collar Type Float		
						Tail Pipe Depth ft		
						Collar Depth 1901.0 ft		
						Sqz. Total Vol. bbl		
Date	Time 24-hr clock	Treating Pressure PSI	Flow Rate B/M	Density LB/G	Volume BBL	Message		
05/16/2022	11:48:05	-1	0.1	8.34	0.0	Started Acquisition		
05/16/2022	11:49:00	-1	0.1	8.34	0.1	Start Job		
05/16/2022	11:49:10	-3	0.1	8.34	0.1	pH=7, Chlorides < 200 ppm		
05/16/2022	11:52:12	27	1.7	8.34	1.3	Pump 5 bbl- Fill/ Flush Lines		
05/16/2022	11:52:15	10	2.2	8.34	1.4			
05/16/2022	11:54:18	1164	0.2	8.34	4.2	Pressure Test Lines		
05/16/2022	11:55:00	1138	0.0	8.34	4.2	Low 1000 psi/ High 3000 psi		
05/16/2022	11:56:25	3669	0.0	8.34	4.2			
05/16/2022	12:00:22	56	3.3	8.34	4.4	Start Pumping Spacer		
05/16/2022	12:00:35	-5	1.5	8.34	5.1			
05/16/2022	12:01:00	20	2.1	8.34	6.0	Pump 30 bbl Fresh Water Spacer		
05/16/2022	12:02:00	93	4.8	8.34	10.5	Dye in 2nd 10 bbl		
05/16/2022	12:04:45	100	4.7	8.34	23.5			
05/16/2022	12:06:21	-8	0.0	8.34	30.3	End Spacer		
05/16/2022	12:06:22	-7	0.0	8.34	30.3	Reset Total, Vol = 30.34 bbl		
05/16/2022	12:08:55	-5	0.0	8.34	30.3			
05/16/2022	12:13:05	-2	0.0	8.34	30.3			
05/16/2022	12:16:15	144	4.6	13.03	36.8	Start Mixing Lead Slurry		
05/16/2022	12:16:16	150	4.6	13.02	36.9	Pump 168 bbl Lead at 13.5 ppg		
05/16/2022	12:17:04	144	4.6	13.13	40.5	566 sk, WR=8.88 gal/sk, Y=1.67 ft3/sk		
05/16/2022	12:17:15	143	4.6	13.15	41.4			

Well Guttersen CC32-775 CC32-775			Field Wattenberg		Job Start May/16/2022		Customer Chevron		Job Number EOHC-00639	
Date	Time 24-hr clock	Treating Pressure PSI	Flow Rate B/M	Density LB/G	Volume BBL	Message				
05/16/2022	12:21:25	290	5.9	13.35	60.6					
05/16/2022	12:25:35	306	6.5	13.25	87.9					
05/16/2022	12:26:26	304	6.5	13.29	93.4	Good Returns				
05/16/2022	12:28:00	302	6.5	13.39	103.7	Scale Lead= 13.5 ppg				
05/16/2022	12:29:27	284	6.6	13.43	113.2	Lead Sample Tag#-007247				
05/16/2022	12:29:45	285	6.6	13.43	115.2					
05/16/2022	12:33:55	309	6.5	13.50	142.3					
05/16/2022	12:38:05	309	6.5	13.47	169.5					
05/16/2022	12:42:15	88	3.6	13.42	191.5					
05/16/2022	12:43:47	91	3.7	13.25	197.0	End Lead Slurry				
05/16/2022	12:44:00	88	3.7	13.25	197.8	Reset Total, Vol = 168.89 bbl				
05/16/2022	12:46:25	-11	0.0	13.61	200.2					
05/16/2022	12:50:35	-11	0.0	13.47	200.2					
05/16/2022	12:52:52	174	4.6	14.34	204.7	Start Mixing Tail Slurry				
05/16/2022	12:54:04	176	4.6	14.40	210.2	Pump 24 bbl Tail at 14.8 ppg				
05/16/2022	12:54:15	181	4.6	14.42	211.1	101 sk, WR=6.37 gal/sk, Y=1.33 ft3/sk				
05/16/2022	12:54:28	173	4.6	14.44	212.1	Est. Top of Lead= 1870 ft				
05/16/2022	12:54:41	174	4.6	14.45	213.1	Tail Sample Tag#-007276				
05/16/2022	12:54:45	181	4.6	14.45	213.4					
05/16/2022	12:54:56	179	4.6	14.44	214.2	Scale Tail- 14.8 ppg				
05/16/2022	12:57:30	196	4.6	14.69	226.0	End Tail Slurry				
05/16/2022	12:58:00	-6	0.0	14.98	227.3	Reset Total, Vol = 24.54 bbl				
05/16/2022	12:58:55	-6	0.0	14.68	227.3					
05/16/2022	13:03:05	-4	0.0	14.48	227.3					
05/16/2022	13:03:56	-6	0.0	14.69	227.3	Drop Top Plug				
05/16/2022	13:05:00	-11	1.7	9.70	229.1	Start Displacement				
05/16/2022	13:07:00	73	4.6	8.50	238.0	Displace w/ 144.6 bbl Fresh				
05/16/2022	13:07:15	68	4.7	8.41	239.2					
05/16/2022	13:11:25	65	4.7	8.34	258.7					
05/16/2022	13:15:35	95	4.7	8.35	278.3					
05/16/2022	13:19:45	217	4.6	8.36	297.4					
05/16/2022	13:23:55	416	6.5	8.34	316.7					
05/16/2022	13:25:47	495	6.6	8.34	328.9	At 93 away, dye to surface				
05/16/2022	13:28:05	631	6.6	8.34	344.0					
05/16/2022	13:29:57	555	4.7	8.34	354.3	At 113 away, cement to surface				
05/16/2022	13:31:00	496	2.3	8.34	358.5	31 bbl Cement back				
05/16/2022	13:32:15	516	2.3	8.34	361.3					
05/16/2022	13:36:25	561	2.2	8.34	370.7					
05/16/2022	13:36:52	543	2.2	8.34	371.7	Final Circulating Pressure= 518 psi				
05/16/2022	13:39:15	986	2.2	8.34	377.0	Bump Top Plug- 1011 psi				
05/16/2022	13:39:20	1031	0.4	8.34	377.1	End Displacement				
05/16/2022	13:39:30	1013	0.0	8.34	377.1	Reset Total, Vol = 144.63 bbl				
05/16/2022	13:40:35	1012	0.1	8.34	377.1					
05/16/2022	13:41:43	2612	0.0	8.34	378.1	Start 30 min CSG Test, Pressure= 2612 psi				
05/16/2022	13:44:45	2592	0.0	8.34	378.1					
05/16/2022	13:48:55	2590	0.0	8.34	378.1					
05/16/2022	13:53:05	2588	0.0	8.34	378.1					
05/16/2022	13:57:15	2588	0.0	8.34	378.1					
05/16/2022	14:01:25	2585	0.0	8.34	378.1					
05/16/2022	14:05:35	2586	0.0	8.34	378.1					
05/16/2022	14:09:45	2585	0.0	8.34	378.1					
05/16/2022	14:13:55	2576	0.0	8.34	378.1					
05/16/2022	14:18:05	2568	0.0	8.34	378.1					
05/16/2022	14:18:22	2567	0.0	8.33	378.1	End 30 min CSG Test, Pressure= 2567 psi				

Well Guttersen CC32-775 CC32-775			Field Wattenberg		Job Start May/16/2022		Customer Chevron		Job Number EOHC-00639	
Date	Time 24-hr clock	Treating Pressure PSI	Flow Rate B/M	Density LB/G	Volume BBL	Message				
05/16/2022	14:19:30	-1	0.0	8.34	378.1	Floats Holding- 1.5 bbl back				
05/16/2022	14:20:00	1	0.0	8.34	378.1	Verify Wash-up				

Post Job Summary

Average Pump Rates, bbl/min					Volume of Fluid Injected, bbl					
Slurry 4.0	N2	Mud	Maximum Rate 10.9		Total Slurry 192.3	Mud 0.0	Spacer 30.0	N2		
Treating Pressure Summary, psi					Breakdown Fluid					
Maximum 3674	Final -1	Average 984	Bump Plug to 1011	Breakdown	Type		Volume bbl		Density lb/gal	
Avg. N2 Percent %		Designed Slurry Volume 192.3 bbl		Displacement 144.6 bbl		Mix Water Temp 65 degF		Cement Circulated to Surface? <input checked="" type="checkbox"/>		Volume 31.0 bbl
								Washed Thru Perfs <input type="checkbox"/>		To ft
Customer or Authorized Representative Mike Duncan				Schlumberger Supervisor Thomas Bailey				Circulation Lost <input type="checkbox"/>		Job Completed <input checked="" type="checkbox"/>
								-		-