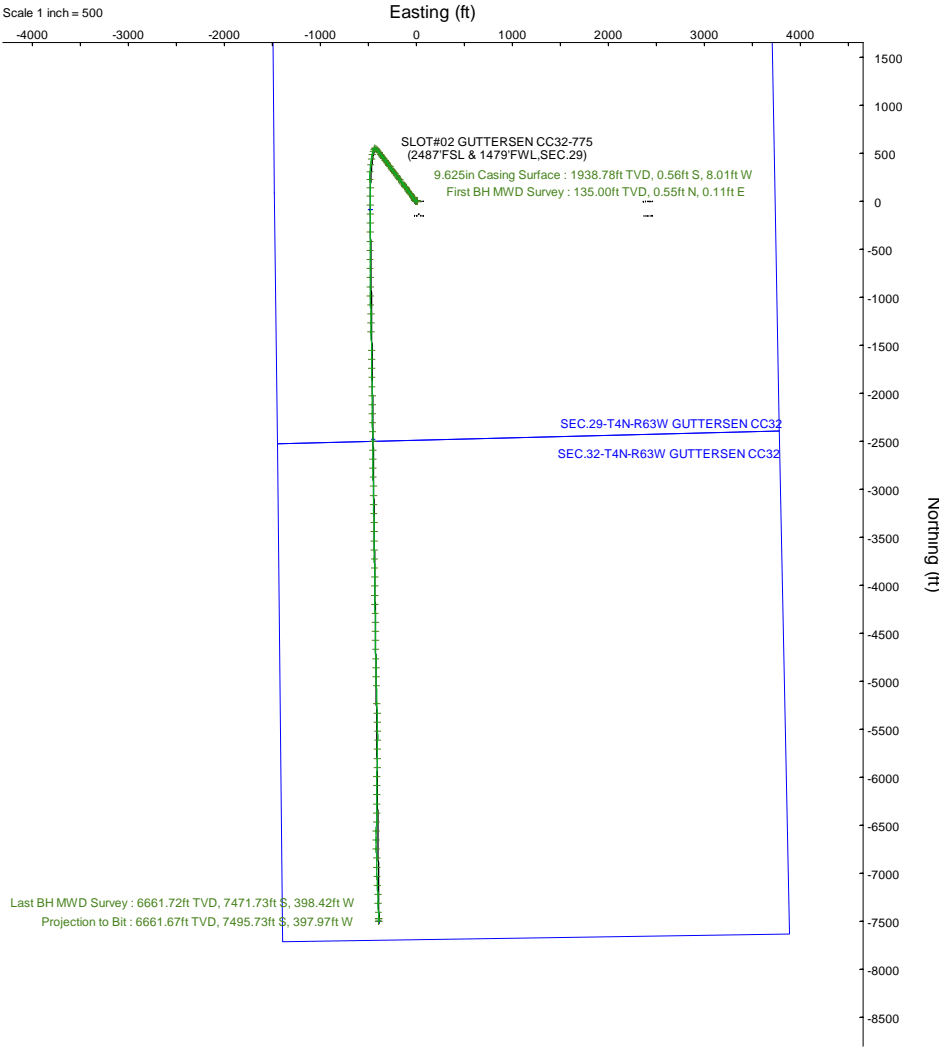
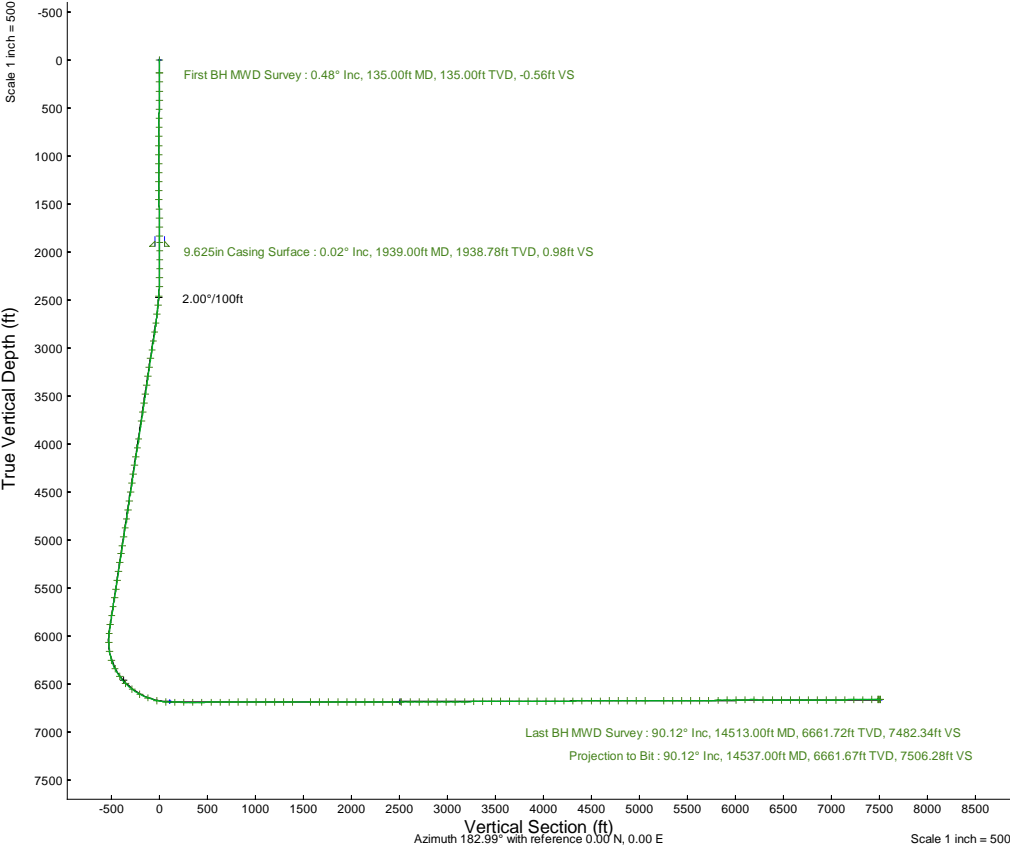


NOBLE ENERGY, INC

Location:	COLORADO	Slot:	SLOT#02 GUTTERSEN CC32-775 (2487'FSL & 1479'FWL,SEC.29)
Field:	WELD COUNTY (NOBLE NAD 83 GRID)	Well:	GUTTERSEN CC32-775
Facility:	SEC.29-T04N-R63W	Wellbore:	GUTTERSEN CC32-775 PWB

Plot reference wellpath is GUTTERSEN CC32-775 (REV-B.0) PWP	Grid System: NAD83 / Lambert Colorado SP, Northern Zone (501), US feet
True vertical depths are referenced to RIG (4762'GL+30'KB @4792'RKB) (RKB)	North Reference: Grid north
Reference wellpath measured depths are referenced to RIG (4762'GL+30'KB @4792'RKB) (RKB)	Scale: True distance
RIG (4762'GL+30'KB @4792'RKB) (RKB) to Mean Sea Level: 4791 feet	Coordinates are in feet referenced to Slot
Mean Sea Level to Ground level (At Slot: SLOT#02 GUTTERSEN CC32-775 (2487'FSL & 1479'FWL,SEC.29)): 0 feet	Depths are in feet
Offset wellpath MDs are referenced to each path's default MD datum	Created by: guenaler on 2022-06-17; Database: WA_Derver

Location Information					
Facility Name			Grid East (US ft)	Grid North (US ft)	Latitude
SEC.29-T04N-R63W			3288517.851	1347598.752	40°16'58.5840"N
Slot			Grid East (US ft)	Grid North (US ft)	Latitude
SLOT#02 GUTTERSEN CC32-775 (2487'FSL & 1479'FWL,SEC.29)			3288540.168	1347599.012	40°16'58.5840"N
RIG (4762'GL+30'KB @4792'RKB) (RKB) to Ground level (At Slot: SLOT#02 GUTTERSEN CC32-775 (2487'FSL & 1479'FWL,SEC.29))			4791ft		
Mean Sea Level to Ground level (At Slot: SLOT#02 GUTTERSEN CC32-775 (2487'FSL & 1479'FWL,SEC.29))			0ft		
RIG (4762'GL+30'KB @4792'RKB) (RKB) to Mean Sea Level			4791ft		





Actual Wellpath Report
GUTTERSEN CC32-775 AWP
Page 1 of 7



REFERENCE WELLPATH IDENTIFICATION			
Operator	NOBLE ENERGY, INC	Well	GUTTERSEN CC32-775
Field	WELD COUNTY (NOBLE NAD 83 GRID)	API/Legal	
Facility	SEC.29-T04N-R63W	Wellbore	GUTTERSEN CC32-775 AWB
Slot	SLOT#02 GUTTERSEN CC32-775 (2487'FSL & 1479'FWL,SEC.29)		

REPORT SETUP INFORMATION			
Projection System	NAD83 / Lambert Colorado SP, Northern Zone (501), US feet	Software System	WellArchitect® 6.0
North Reference	Grid	User	Guenaler
Scale	0.999957	Report Generated	6/17/2022 at 11:49:26 AM
Convergence at slot	0.67° East	Database	WA_Denver

WELLPATH LOCATION						
	Local coordinates		Grid coordinates		Geographic coordinates	
	North[ft]	East[ft]	Easting[US ft]	Northing[US ft]	Latitude	Longitude
Slot Location	0.26	22.32	3288540.17	1347599.01	40.2829400°	-104.4657500°
Facility Reference Pt			3288517.85	1347598.75	40.2829400°	-104.4658300°
Field Reference Pt			3000000.00	4454105.15	48.7761986°	-105.5000000°

WELLPATH DATUM			
Calculation method	Minimum curvature	RIG (4762'GL+30'KB@4792'RKB) (RKB) to Facility Vertical Datum	4791.00ft
Horizontal Reference Pt	Slot	RIG (4762'GL+30'KB@4792'RKB) (RKB) to Mean Sea Level	4791.00ft
Vertical Reference Pt	RIG (4762'GL+30'KB@4792'RKB) (RKB)	RIG (4762'GL+30'KB@4792'RKB) (RKB) to Ground Level at Slot (SLOT#02 GUTTERSEN CC32-775 (2487'FSL & 1479'FWL,SEC.29))	4791.00ft
MD Reference Pt	RIG (4762'GL+30'KB@4792'RKB) (RKB)	Section Origin	N 0.00, E 0.00 ft
Field Vertical Reference	Mean Sea Level	Section Azimuth	182.99°



Actual Wellpath Report
GUTTERSEN CC32-775 AWP
Page 2 of 7



REFERENCE WELLPATH IDENTIFICATION			
Operator	NOBLE ENERGY, INC	Well	GUTTERSEN CC32-775
Field	WELD COUNTY (NOBLE NAD 83 GRID)	API/Legal	
Facility	SEC.29-T04N-R63W	Wellbore	GUTTERSEN CC32-775 AWB
Slot	SLOT#02 GUTTERSEN CC32-775 (2487'FSL & 1479'FWL,SEC.29)		

WELLPATH DATA (153 stations)										
MD [ft]	Inclination [°]	Azimuth [°]	TVD [ft]	Vert Sect [ft]	North [ft]	East [ft]	Latitude	Longitude	DLS [°/100ft]	Comments
0.00	0.000	11.620	0.00	0.00	0.00	0.00	40.2829400	-104.4657500	0.00	
135.00	0.480	11.620	135.00	-0.56	0.55	0.11	40.2829415	-104.4657496	0.36	First BH MWD Survey
229.00	0.690	11.210	228.99	-1.51	1.49	0.30	40.2829441	-104.4657489	0.22	
324.00	0.980	26.120	323.98	-2.82	2.79	0.77	40.2829476	-104.4657471	0.38	
418.00	0.610	41.840	417.97	-3.95	3.88	1.46	40.2829506	-104.4657446	0.45	
512.00	0.510	52.870	511.97	-4.61	4.51	2.13	40.2829523	-104.4657422	0.16	
607.00	0.440	32.200	606.97	-5.20	5.07	2.66	40.2829538	-104.4657403	0.19	
701.00	0.530	69.060	700.96	-5.69	5.53	3.26	40.2829551	-104.4657381	0.34	
796.00	0.530	82.700	795.96	-5.95	5.74	4.10	40.2829556	-104.4657351	0.13	
890.00	1.050	284.540	889.96	-6.20	6.01	3.70	40.2829564	-104.4657365	1.65	
985.00	1.410	294.270	984.93	-6.80	6.71	1.79	40.2829584	-104.4657433	0.44	
1079.00	1.610	299.210	1078.90	-7.80	7.83	-0.41	40.2829615	-104.4657512	0.25	
1173.00	0.250	268.650	1172.89	-8.37	8.47	-1.77	40.2829633	-104.4657560	1.49	
1268.00	0.460	206.310	1267.88	-8.00	8.13	-2.15	40.2829624	-104.4657574	0.43	
1362.00	1.000	231.120	1361.88	-7.11	7.27	-2.95	40.2829601	-104.4657603	0.65	
1456.00	1.000	221.880	1455.86	-5.92	6.15	-4.14	40.2829570	-104.4657646	0.17	
1551.00	1.510	222.780	1550.84	-4.32	4.61	-5.54	40.2829528	-104.4657697	0.54	
1645.00	1.000	190.830	1644.82	-2.55	2.90	-6.54	40.2829482	-104.4657733	0.90	
1740.00	1.350	205.190	1739.80	-0.69	1.07	-7.17	40.2829432	-104.4657757	0.48	
1834.00	0.560	203.370	1833.78	0.76	-0.35	-7.82	40.2829393	-104.4657781	0.84	
1902.00	0.130	327.950	1901.78	1.01	-0.59	-8.00	40.2829386	-104.4657787	0.95	
1985.00	0.180	137.030	1984.78	1.02	-0.61	-7.96	40.2829386	-104.4657785	0.37	
2079.00	0.030	133.310	2078.78	1.14	-0.73	-7.84	40.2829382	-104.4657781	0.16	
2174.00	0.130	0.700	2173.78	1.05	-0.64	-7.82	40.2829385	-104.4657781	0.16	
2268.00	1.970	320.550	2267.76	-0.25	0.71	-8.85	40.2829422	-104.4657817	1.99	
2363.00	3.610	326.320	2362.65	-3.85	4.46	-11.54	40.2829526	-104.4657912	1.75	
2458.00	5.090	322.500	2457.37	-9.46	10.29	-15.77	40.2829688	-104.4658061	1.59	
2552.00	6.800	324.900	2550.86	-17.01	18.15	-21.51	40.2829905	-104.4658263	1.84	
2647.00	8.410	321.980	2645.02	-26.68	28.23	-29.02	40.2830184	-104.4658528	1.74	
2741.00	9.660	324.860	2737.86	-38.07	40.10	-37.79	40.2830513	-104.4658838	1.41	
2835.00	10.580	323.420	2830.39	-50.92	53.47	-47.47	40.2830883	-104.4659179	1.01	
2930.00	11.030	323.330	2923.71	-64.64	67.77	-58.10	40.2831279	-104.4659554	0.47	
3025.00	10.920	323.660	3016.97	-78.60	82.30	-68.86	40.2831681	-104.4659933	0.13	
3119.00	11.170	324.360	3109.23	-92.59	96.88	-79.44	40.2832084	-104.4660307	0.30	
3214.00	10.660	323.730	3202.51	-106.58	111.44	-90.00	40.2832488	-104.4660679	0.55	
3309.00	10.810	322.940	3295.85	-120.21	125.63	-100.57	40.2832881	-104.4661052	0.22	
3403.00	10.860	322.830	3388.17	-133.72	139.72	-111.23	40.2833271	-104.4661428	0.06	
3498.00	10.780	322.820	3481.48	-147.35	153.93	-122.01	40.2833664	-104.4661808	0.08	
3592.00	10.990	323.000	3573.79	-160.93	168.09	-132.71	40.2834056	-104.4662186	0.23	
3687.00	11.020	322.170	3667.05	-174.74	182.50	-143.73	40.2834455	-104.4662575	0.17	
3781.00	11.530	323.230	3759.23	-188.76	197.12	-154.86	40.2834860	-104.4662968	0.59	
3970.00	11.430	321.630	3944.45	-217.33	226.93	-177.79	40.2835686	-104.4663777	0.18	
4065.00	11.450	323.080	4037.56	-231.63	241.85	-189.30	40.2836099	-104.4664183	0.30	
4159.00	11.330	323.420	4129.71	-245.90	256.72	-200.41	40.2836511	-104.4664575	0.15	
4254.00	11.150	322.320	4222.89	-260.06	271.49	-211.58	40.2836919	-104.4664970	0.29	



Actual Wellpath Report
GUTTERSEN CC32-775 AWP
Page 3 of 7



REFERENCE WELLPATH IDENTIFICATION			
Operator	NOBLE ENERGY, INC	Well	GUTTERSEN CC32-775
Field	WELD COUNTY (NOBLE NAD 83 GRID)	API/Legal	
Facility	SEC.29-T04N-R63W	Wellbore	GUTTERSEN CC32-775 AWB
Slot	SLOT#02 GUTTERSEN CC32-775 (2487'FSL & 1479'FWL,SEC.29)		

WELLPATH DATA (153 stations)										
MD [ft]	Inclination [°]	Azimuth [°]	TVD [ft]	Vert Sect [ft]	North [ft]	East [ft]	Latitude	Longitude	DLS [°/100ft]	Comments
4348.00	11.330	322.930	4315.09	-274.02	286.05	-222.71	40.2837323	-104.4665362	0.23	
4443.00	11.420	323.180	4408.22	-288.39	301.02	-233.97	40.2837737	-104.4665760	0.11	
4537.00	11.110	323.460	4500.41	-302.52	315.75	-244.94	40.2838145	-104.4666147	0.33	
4632.00	10.960	323.970	4593.65	-316.60	330.41	-255.70	40.2838551	-104.4666526	0.19	
4727.00	11.350	321.550	4686.86	-330.62	345.03	-266.82	40.2838956	-104.4666919	0.64	
4821.00	10.940	325.080	4779.09	-344.59	359.59	-277.68	40.2839359	-104.4667302	0.85	
4916.00	11.440	322.460	4872.28	-358.86	374.45	-288.58	40.2839770	-104.4667686	0.75	
5010.00	11.270	323.120	4964.44	-373.00	389.19	-299.78	40.2840178	-104.4668081	0.23	
5105.00	11.090	322.680	5057.64	-387.09	403.88	-310.89	40.2840585	-104.4668473	0.21	
5188.00	11.260	323.190	5139.06	-399.40	416.72	-320.58	40.2840940	-104.4668815	0.24	
5282.00	11.390	322.910	5231.23	-413.55	431.47	-331.68	40.2841349	-104.4669207	0.15	
5377.00	11.400	322.090	5324.36	-427.82	446.36	-343.10	40.2841761	-104.4669610	0.17	
5471.00	11.250	322.920	5416.53	-441.86	461.00	-354.34	40.2842167	-104.4670007	0.24	
5566.00	11.380	322.510	5509.69	-456.08	475.83	-365.63	40.2842577	-104.4670405	0.16	
5660.00	11.420	322.920	5601.83	-470.26	490.62	-376.89	40.2842987	-104.4670803	0.10	
5755.00	11.300	323.140	5694.97	-484.60	505.57	-388.14	40.2843401	-104.4671200	0.13	
5849.00	11.280	322.060	5787.15	-498.61	520.18	-399.32	40.2843806	-104.4671594	0.23	
5944.00	11.430	322.440	5880.29	-512.78	534.97	-410.77	40.2844215	-104.4671998	0.18	
6039.00	11.210	312.440	5973.45	-525.80	548.67	-423.32	40.2844595	-104.4672443	2.08	
6133.00	6.880	253.340	6066.44	-529.72	553.23	-435.49	40.2844724	-104.4672877	10.28	
6228.00	9.490	208.750	6160.55	-520.75	544.72	-444.71	40.2844494	-104.4673211	7.00	
6322.00	17.930	199.430	6251.80	-499.85	524.25	-453.27	40.2843934	-104.4673526	9.25	
6417.00	26.900	191.900	6339.55	-464.51	489.35	-462.59	40.2842979	-104.4673875	9.90	
6511.00	35.930	188.950	6419.69	-415.97	441.19	-471.28	40.2841661	-104.4674206	9.74	
6605.00	43.500	187.430	6491.95	-356.20	381.78	-479.77	40.2840033	-104.4674535	8.12	
6700.00	53.030	182.960	6555.14	-285.46	311.28	-485.97	40.2838099	-104.4674787	10.62	
6795.00	62.510	178.340	6605.76	-205.30	231.05	-486.71	40.2835897	-104.4674847	10.79	
6889.00	70.050	178.330	6643.55	-119.59	145.08	-484.22	40.2833537	-104.4674793	8.02	
6984.00	75.570	180.120	6671.62	-29.07	54.38	-483.01	40.2831047	-104.4674788	6.08	
7078.00	86.700	180.520	6686.08	63.56	-38.35	-483.53	40.2828502	-104.4674846	11.85	
7173.00	89.880	180.260	6688.91	158.41	-133.30	-484.18	40.2825896	-104.4674908	3.36	
7267.00	89.110	180.110	6689.74	252.29	-227.29	-484.48	40.2823316	-104.4674958	0.83	
7361.00	90.430	180.330	6690.12	346.18	-321.29	-484.84	40.2820736	-104.4675011	1.42	
7456.00	90.060	180.750	6689.71	441.09	-416.28	-485.74	40.2818129	-104.4675082	0.59	
7551.00	90.250	179.580	6689.46	535.97	-511.28	-486.01	40.2815522	-104.4675132	1.25	
7645.00	90.150	180.180	6689.13	629.83	-605.28	-485.82	40.2812942	-104.4675164	0.65	
7740.00	90.150	179.950	6688.88	724.71	-700.28	-485.92	40.2810334	-104.4675207	0.24	
7834.00	90.060	179.050	6688.71	818.53	-794.27	-485.10	40.2807754	-104.4675217	0.96	
7929.00	90.220	178.340	6688.48	913.27	-889.25	-482.94	40.2805147	-104.4675179	0.77	
8023.00	90.060	179.360	6688.25	1007.02	-983.23	-481.05	40.2802567	-104.4675151	1.10	
8118.00	90.120	179.370	6688.10	1101.83	-1078.22	-480.00	40.2799959	-104.4675153	0.06	
8212.00	89.630	178.750	6688.30	1195.60	-1172.21	-478.46	40.2797379	-104.4675137	0.84	
8307.00	90.060	178.520	6688.56	1290.33	-1267.18	-476.19	40.2794771	-104.4675095	0.51	
8401.00	90.120	179.270	6688.41	1384.09	-1361.16	-474.38	40.2792191	-104.4675070	0.80	
8590.00	89.940	179.180	6688.31	1572.68	-1550.15	-471.83	40.2787003	-104.4675057	0.11	



Actual Wellpath Report
GUTTERSEN CC32-775 AWP
Page 4 of 7



REFERENCE WELLPATH IDENTIFICATION			
Operator	NOBLE ENERGY, INC	Well	GUTTERSEN CC32-775
Field	WELD COUNTY (NOBLE NAD 83 GRID)	API/Legal	
Facility	SEC.29-T04N-R63W	Wellbore	GUTTERSEN CC32-775 AWB
Slot	SLOT#02 GUTTERSEN CC32-775 (2487'FSL & 1479'FWL,SEC.29)		

WELLPATH DATA (153 stations)										
MD [ft]	Inclination [°]	Azimuth [°]	TVD [ft]	Vert Sect [ft]	North [ft]	East [ft]	Latitude	Longitude	DLS [°/100ft]	Comments
8685.00	89.940	179.010	6688.41	1667.46	-1645.13	-470.32	40.2784395	-104.4675043	0.18	
8779.00	90.090	179.270	6688.39	1761.25	-1739.12	-468.91	40.2781815	-104.4675031	0.32	
8874.00	90.150	178.790	6688.19	1856.02	-1834.11	-467.31	40.2779207	-104.4675013	0.51	
8968.00	90.090	179.330	6687.99	1949.80	-1928.10	-465.76	40.2776627	-104.4674997	0.58	
9063.00	90.180	179.320	6687.77	2044.60	-2023.09	-464.64	40.2774019	-104.4674997	0.10	
9158.00	90.800	179.200	6686.95	2139.40	-2118.08	-463.42	40.2771412	-104.4674993	0.66	
9252.00	90.460	179.110	6685.92	2233.18	-2212.06	-462.03	40.2768832	-104.4674982	0.37	
9346.00	90.030	179.270	6685.52	2326.97	-2306.05	-460.70	40.2766252	-104.4674974	0.49	
9441.00	90.030	179.350	6685.47	2421.77	-2401.04	-459.56	40.2763644	-104.4674972	0.08	
9535.00	90.180	179.380	6685.30	2515.58	-2495.04	-458.52	40.2761064	-104.4674974	0.16	
9630.00	90.000	179.320	6685.15	2610.39	-2590.03	-457.44	40.2758456	-104.4674975	0.20	
9724.00	90.090	179.390	6685.07	2704.20	-2684.03	-456.38	40.2755876	-104.4674977	0.12	
9819.00	90.310	179.230	6684.74	2799.01	-2779.02	-455.24	40.2753268	-104.4674975	0.29	
9914.00	90.220	179.000	6684.30	2893.79	-2874.01	-453.77	40.2750660	-104.4674962	0.26	
10008.00	89.940	178.730	6684.17	2987.54	-2967.99	-451.91	40.2748080	-104.4674935	0.41	
10102.00	90.060	179.320	6684.17	3081.32	-3061.97	-450.31	40.2745500	-104.4674917	0.64	
10197.00	90.430	178.780	6683.77	3176.09	-3156.96	-448.73	40.2742892	-104.4674900	0.69	
10291.00	90.710	179.050	6682.83	3269.85	-3250.94	-446.95	40.2740312	-104.4674875	0.41	
10386.00	90.680	178.780	6681.68	3364.60	-3345.91	-445.15	40.2737705	-104.4674850	0.29	
10480.00	90.250	179.170	6680.92	3458.36	-3439.89	-443.47	40.2735125	-104.4674829	0.62	
10575.00	90.370	179.590	6680.40	3553.17	-3534.89	-442.44	40.2732517	-104.4674832	0.46	
10669.00	90.180	179.290	6679.95	3646.99	-3628.88	-441.53	40.2729937	-104.4674838	0.38	
10764.00	90.280	179.400	6679.57	3741.80	-3723.87	-440.44	40.2727329	-104.4674839	0.16	
10858.00	90.400	179.360	6679.01	3835.61	-3817.87	-439.42	40.2724749	-104.4674842	0.13	
10953.00	90.520	179.360	6678.25	3930.42	-3912.86	-438.36	40.2722141	-104.4674844	0.13	
11047.00	90.220	179.320	6677.64	4024.22	-4006.85	-437.28	40.2719561	-104.4674844	0.32	
11142.00	90.310	178.660	6677.20	4118.99	-4101.83	-435.60	40.2716953	-104.4674824	0.70	
11236.00	90.000	179.710	6676.95	4212.78	-4195.82	-434.27	40.2714373	-104.4674815	1.16	
11331.00	90.680	178.880	6676.38	4307.58	-4290.81	-433.10	40.2711766	-104.4674813	1.13	
11425.00	90.310	179.380	6675.57	4401.36	-4384.80	-431.67	40.2709185	-104.4674801	0.66	
11519.00	89.600	178.920	6675.65	4495.15	-4478.79	-430.28	40.2706605	-104.4674790	0.90	
11614.00	90.250	179.200	6675.77	4589.92	-4573.77	-428.72	40.2703998	-104.4674774	0.74	
11708.00	90.550	179.200	6675.11	4683.72	-4667.76	-427.41	40.2701417	-104.4674766	0.32	
11803.00	90.000	179.270	6674.66	4778.51	-4762.75	-426.14	40.2698810	-104.4674760	0.58	
11897.00	90.460	179.070	6674.28	4872.30	-4856.74	-424.78	40.2696229	-104.4674751	0.53	
11992.00	90.150	178.420	6673.77	4967.04	-4951.71	-422.70	40.2693622	-104.4674716	0.76	
12086.00	90.520	178.830	6673.23	5060.76	-5045.69	-420.44	40.2691042	-104.4674674	0.59	
12275.00	90.000	178.080	6672.37	5249.16	-5234.61	-415.34	40.2685855	-104.4674570	0.48	
12370.00	90.120	177.940	6672.27	5343.80	-5329.56	-412.05	40.2683248	-104.4674492	0.19	
12464.00	89.940	178.360	6672.22	5437.47	-5423.51	-409.01	40.2680668	-104.4674422	0.49	
12559.00	90.250	179.090	6672.06	5532.20	-5518.48	-406.90	40.2678060	-104.4674386	0.83	
12654.00	90.620	180.640	6671.34	5627.06	-5613.48	-406.67	40.2675453	-104.4674418	1.68	
12748.00	90.460	181.060	6670.45	5720.99	-5707.46	-408.07	40.2672874	-104.4674507	0.48	
12843.00	90.580	180.610	6669.59	5815.91	-5802.45	-409.45	40.2670267	-104.4674596	0.49	
12937.00	91.290	182.190	6668.06	5909.86	-5896.40	-411.75	40.2667689	-104.4674718	1.84	



Actual Wellpath Report
GUTTERSEN CC32-775 AWP
Page 5 of 7



REFERENCE WELLPATH IDENTIFICATION			
Operator	NOBLE ENERGY, INC	Well	GUTTERSEN CC32-775
Field	WELD COUNTY (NOBLE NAD 83 GRID)	API/Legal	
Facility	SEC.29-T04N-R63W	Wellbore	GUTTERSEN CC32-775 AWB
Slot	SLOT#02 GUTTERSEN CC32-775 (2487'FSL & 1479'FWL,SEC.29)		

WELLPATH DATA (153 stations) † = interpolated, ‡ = extrapolated station										
MD [ft]	Inclination [°]	Azimuth [°]	TVD [ft]	Vert Sect [ft]	North [ft]	East [ft]	Latitude	Longitude	DLS [°/100ft]	Comments
13032.00	91.200	181.460	6665.99	6004.82	-5991.33	-414.77	40.2665084	-104.4674866	0.77	
13126.00	91.540	179.660	6663.75	6098.70	-6085.30	-415.69	40.2662505	-104.4674938	1.95	
13221.00	89.450	179.650	6662.93	6193.53	-6180.29	-415.12	40.2659898	-104.4674957	2.20	
13316.00	89.510	181.130	6663.79	6288.43	-6275.28	-415.77	40.2657291	-104.4675020	1.56	
13410.00	89.850	181.590	6664.31	6382.39	-6369.25	-418.00	40.2654712	-104.4675139	0.61	
13504.00	89.480	180.270	6664.86	6476.32	-6463.23	-419.52	40.2652133	-104.4675233	1.46	
13599.00	89.570	181.680	6665.65	6571.26	-6558.21	-421.14	40.2649527	-104.4675330	1.49	
13693.00	89.450	179.930	6666.45	6665.18	-6652.20	-422.46	40.2646947	-104.4675417	1.87	
13787.00	90.030	178.140	6666.88	6758.95	-6746.18	-420.88	40.2644367	-104.4675399	2.00	
13882.00	90.580	179.180	6666.37	6853.68	-6841.15	-418.65	40.2641760	-104.4675359	1.24	
13976.00	90.150	179.020	6665.78	6947.46	-6935.14	-417.18	40.2639180	-104.4675345	0.49	
14071.00	90.280	176.530	6665.42	7042.06	-7030.06	-413.49	40.2636573	-104.4675253	2.62	
14165.00	91.750	177.960	6663.75	7135.56	-7123.93	-408.97	40.2633995	-104.4675130	2.18	
14260.00	89.820	177.110	6662.45	7230.12	-7218.82	-404.89	40.2631389	-104.4675023	2.22	
14354.00	90.280	178.820	6662.37	7323.75	-7312.76	-401.55	40.2628810	-104.4674943	1.88	
14449.00	90.250	178.880	6661.93	7418.50	-7407.74	-399.64	40.2626202	-104.4674914	0.07	
14513.00	90.120	178.930	6661.72	7482.34	-7471.73	-398.42	40.2624445	-104.4674897	0.22	Last BH MWD Survey
14537.00‡	90.120	178.930	6661.67	7506.28	-7495.73	-397.97	40.2623787	-104.4674891	0.00	Projection to Bit

HOLE & CASING SECTIONS - Ref Wellbore: GUTTERSEN CC32-775 AWB Ref Wellpath: GUTTERSEN CC32-775 AWP									
String/Diameter	Start MD [ft]	End MD [ft]	Interval [ft]	Start TVD [ft]	End TVD [ft]	Start N/S [ft]	Start E/W [ft]	End N/S [ft]	End E/W [ft]
9.625in Casing Surface	30.00	1939.00	1909.00	30.00	1938.78	0.03	0.01	-0.56	-8.01
8.5in Open Hole	1939.00	14513.00	12574.00	1938.78	6661.72	-0.56	-8.01	-7471.73	-398.42



Actual Wellpath Report

GUTTERSEN CC32-775 AWP

Page 6 of 7



REFERENCE WELLPATH IDENTIFICATION			
Operator	NOBLE ENERGY, INC	Well	GUTTERSEN CC32-775
Field	WELD COUNTY (NOBLE NAD 83 GRID)	API/Legal	
Facility	SEC.29-T04N-R63W	Wellbore	GUTTERSEN CC32-775 AWB
Slot	SLOT#02 GUTTERSEN CC32-775 (2487'FSL & 1479'FWL,SEC.29)		

TARGETS								
Name	TVD [ft]	North [ft]	East [ft]	Grid East [US ft]	Grid North [US ft]	Latitude	Longitude	Shape
SEC.29-T4N-R63W GUTTERSEN CC32	0.00	-0.26	-22.32	3288517.85	1347598.75	40.2829400	-104.4658300	polygon
	2D Polygon: dimensions not calculated							
SEC.32-T4N-R63W GUTTERSEN CC32	0.00	-0.26	-22.32	3288517.85	1347598.75	40.2829400	-104.4658300	polygon
	2D Polygon: dimensions not calculated							
GUTTERSEN CC32-775 BHL PLAN (200'FSL & 1004'FWL,SEC.32)	6593.00	-7497.23	-392.22	3288147.97	1340102.12	40.2623743	-104.4674686	point
GUTTERSEN CC32-775 BHL PLAN 2(200'FSL & 1004'FWL,SEC.32)	6664.00	-7497.23	-392.22	3288147.97	1340102.12	40.2623743	-104.4674686	point
GUTTERSEN CC32-775 LP PLAN (2417'FSL & 995'FWL,SEC.29)	6682.00	-82.97	-483.70	3288056.49	1347516.05	40.2827277	-104.4674870	point
GUTTERSEN CC32-775 LP PLAN 2(2417'FSL & 995'FWL,SEC.29)	6683.00	-82.97	-483.70	3288056.49	1347516.05	40.2827277	-104.4674870	point
GUTTERSEN CC32-775 T1 REV-2	6683.00	-2479.58	-454.14	3288086.05	1345119.54	40.2761486	-104.4674811	point

WELLPATH COMPOSITION - Ref Wellbore: GUTTERSEN CC32-775 AWB Ref Wellpath: GUTTERSEN CC32-775 AWP					
Start MD [ft]	End MD [ft]	Positional Uncertainty Model	Log Name/Comment	Wellbore	Survey Date
0.00	1902.00	OWSG MWD rev2 (MS+IFR1)	BH ATC Surface OWSG MWD MS+IFR <135' - 1902'>	GUTTERSEN CC32-775 AWB	5/16/2022
1902.00	14537.00	OWSG MWD rev2 (MS+IFR1)	8.5 ATC OWSG MWD rev2 (MS+IFR1) <1985'- 14513'>	GUTTERSEN CC32-775 AWB	5/24/2022



Actual Wellpath Report

GUTTERSEN CC32-775 AWP

Page 7 of 7



REFERENCE WELLPATH IDENTIFICATION			
Operator	NOBLE ENERGY, INC	Well	GUTTERSEN CC32-775
Field	WELD COUNTY (NOBLE NAD 83 GRID)	API/Legal	
Facility	SEC.29-T04N-R63W	Wellbore	GUTTERSEN CC32-775 AWB
Slot	SLOT#02 GUTTERSEN CC32-775 (2487'FSL & 1479'FWL,SEC.29)		

WELLPATH COMMENTS				
MD [ft]	Inclination [°]	Azimuth [°]	TVD [ft]	Comment
135.00	0.480	11.620	135.00	First BH MWD Survey
14513.00	90.120	178.930	6661.72	Last BH MWD Survey
14537.00	90.120	178.930	6661.67	Projection to Bit