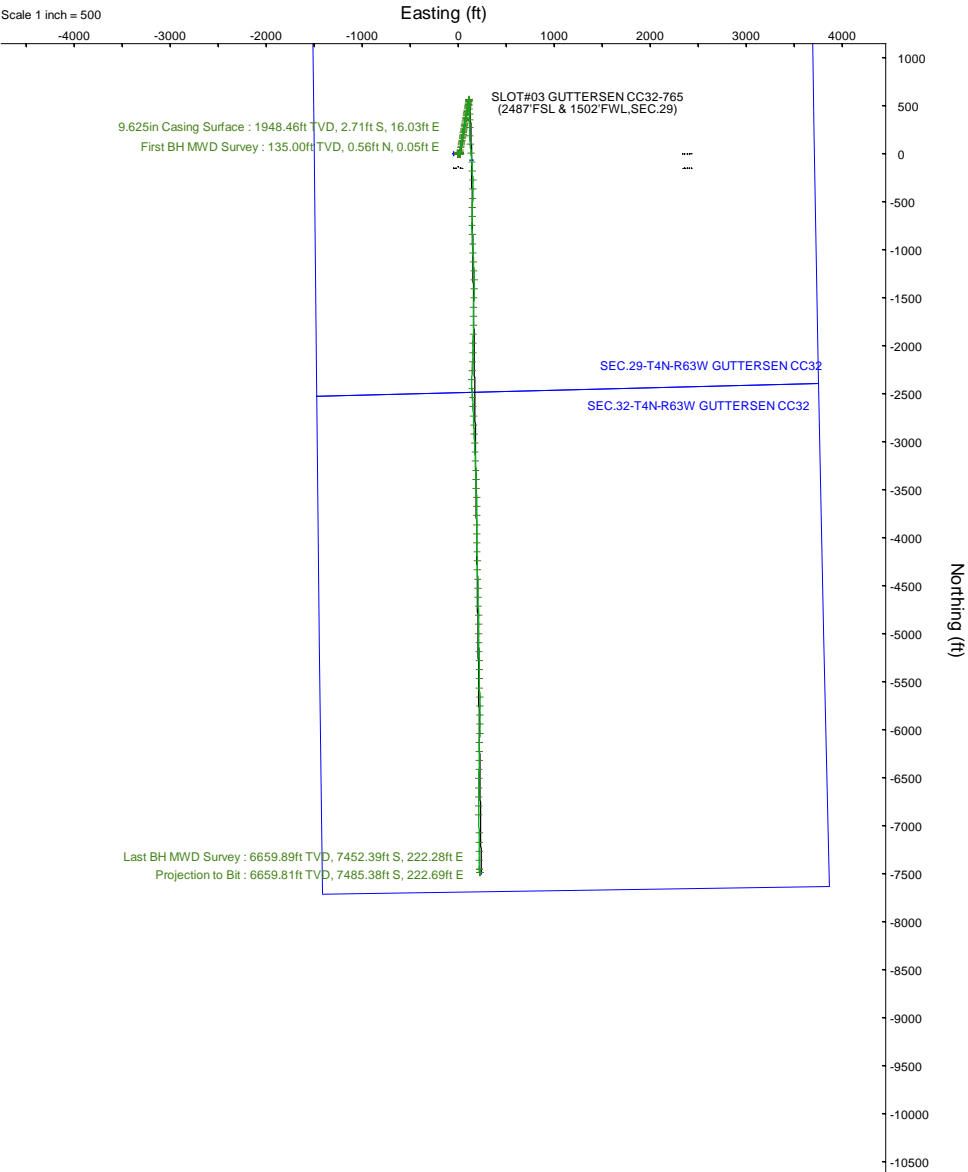
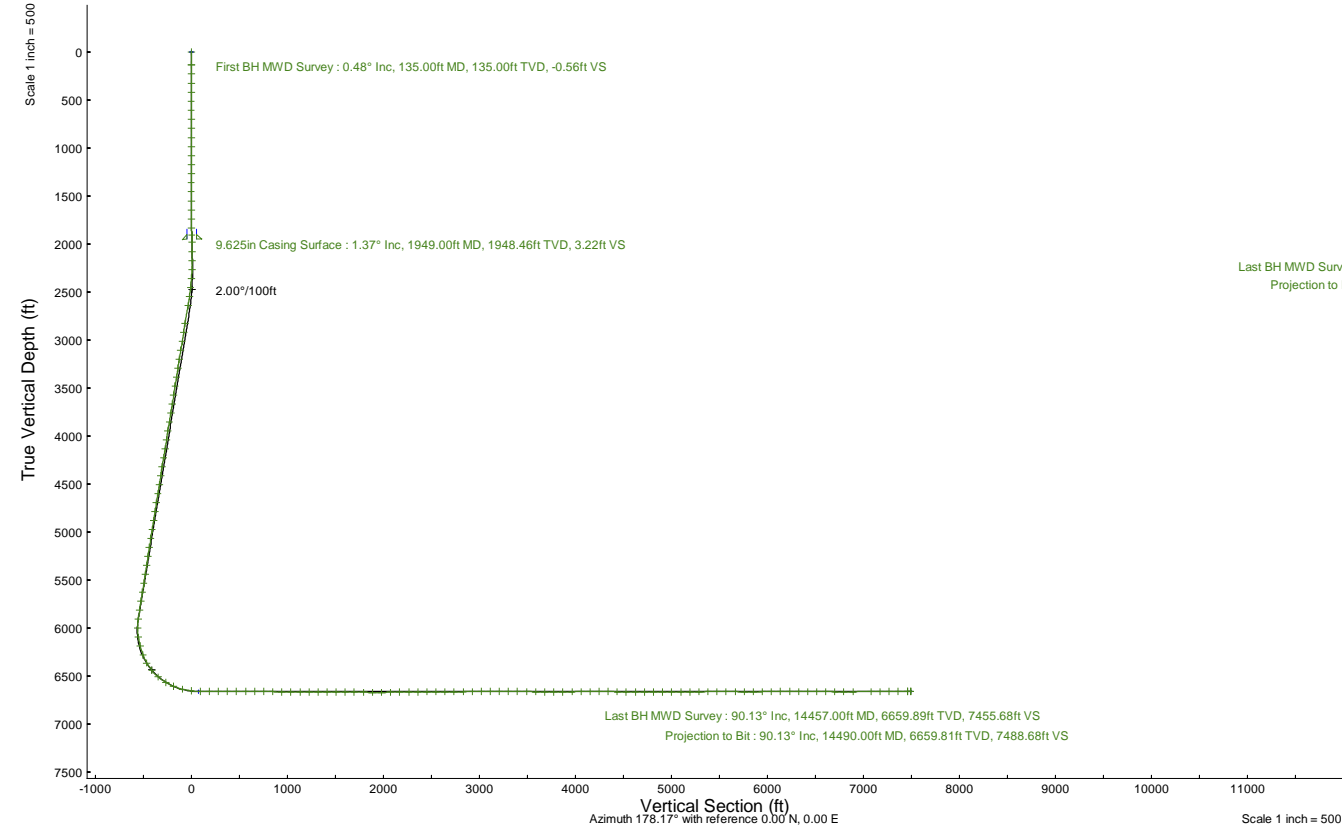


# NOBLE ENERGY, INC

Location:	COLORADO	Slot:	SLOT#03 GUTTERSEN CC32-765 (2487FSL & 1502FWL,SEC.29)
Field:	WELD COUNTY (NOBLE NAD 83 GRID)	Well:	GUTTERSEN CC32-765
Facility:	SEC.29-T04N-R63W	Wellbore:	GUTTERSEN CC32-765 PWB

Plot reference wellpath is GUTTERSEN CC32-765 (REV-B.1) PWP	Grid System: NAD83 / Lambert Colorado SP, Northern Zone (501), US feet
True vertical depths are referenced to RIG (4762'GL+30'KB@4792'RKB) (RKB)	North Reference: Grid north
Reference wellpath measured depths are referenced to RIG (4762'GL+30'KB@4792'RKB) (RKB)	Scale: True distance
RIG (4762'GL+30'KB@4792'RKB) (RKB) to Mean Sea Level: 4792 feet	Coordinates are in feet referenced to Slot
Mean Sea Level to Ground level (At Slot: SLOT#03 GUTTERSEN CC32-765 (2487FSL & 1502FWL,SEC.29)): 0 feet	Depths are in feet
Offset wellpath MDs are referenced to each path's default MD datum	Created by: guenaler on 2022-06-17; Database: WA_Derver

Location Information					
Facility Name			Grid East (US ft)	Grid North (US ft)	Latitude
SEC.29-T04N-R63W			3288517.851	1347598.752	40°16'58.5840"N
Slot			Grid East (US ft)	Grid North (US ft)	Latitude
SLOT#03 GUTTERSEN CC32-765 (2487FSL & 1502FWL,SEC.29)			3288562.486	1347599.272	40°16'58.5840"N
RIG (4762'GL+30'KB@4792'RKB) to Ground level (At Slot: SLOT#03 GUTTERSEN CC32-765 (2487FSL & 1502FWL,SEC.29))			4792ft		
Mean Sea Level to Ground level (At Slot: SLOT#03 GUTTERSEN CC32-765 (2487FSL & 1502FWL,SEC.29))			0ft		
RIG (4762'GL+30'KB@4792'RKB) (RKB) to Mean Sea Level			4792ft		





Actual Wellpath Report  
GUTTERSEN CC32-765 AWP  
Page 1 of 7



REFERENCE WELLPATH IDENTIFICATION			
Operator	NOBLE ENERGY, INC	Well	GUTTERSEN CC32-765
Field	WELD COUNTY (NOBLE NAD 83 GRID)	API/Legal	
Facility	SEC.29-T04N-R63W	Wellbore	GUTTERSEN CC32-765 AWB
Slot	SLOT#03 GUTTERSEN CC32-765 (2487'FSL & 1502'FWL,SEC.29)		

REPORT SETUP INFORMATION			
Projection System	NAD83 / Lambert Colorado SP, Northern Zone (501), US feet	Software System	WellArchitect® 6.0
North Reference	Grid	User	Guenaler
Scale	0.999957	Report Generated	6/17/2022 at 11:36:54 AM
Convergence at slot	0.67° East	Database	WA_Denver

WELLPATH LOCATION						
	Local coordinates		Grid coordinates		Geographic coordinates	
	North[ft]	East[ft]	Easting[US ft]	Northing[US ft]	Latitude	Longitude
Slot Location	0.52	44.64	3288562.49	1347599.27	40.2829400°	-104.4656700°
Facility Reference Pt			3288517.85	1347598.75	40.2829400°	-104.4658300°
Field Reference Pt			3000000.00	4454105.15	48.7761986°	-105.5000000°

WELLPATH DATUM			
Calculation method	Minimum curvature	RIG (4762'GL+30'KB@4792'RKB) (RKB) to Facility Vertical Datum	4792.00ft
Horizontal Reference Pt	Slot	RIG (4762'GL+30'KB@4792'RKB) (RKB) to Mean Sea Level	4792.00ft
Vertical Reference Pt	RIG (4762'GL+30'KB@4792'RKB) (RKB)	RIG (4762'GL+30'KB@4792'RKB) (RKB) to Ground Level at Slot (SLOT#03 GUTTERSEN CC32-765 (2487'FSL & 1502'FWL,SEC.29))	4792.00ft
MD Reference Pt	RIG (4762'GL+30'KB@4792'RKB) (RKB)	Section Origin	N 0.00, E 0.00 ft
Field Vertical Reference	Mean Sea Level	Section Azimuth	178.17°



Actual Wellpath Report  
GUTTERSEN CC32-765 AWP  
Page 2 of 7



REFERENCE WELLPATH IDENTIFICATION			
Operator	NOBLE ENERGY, INC	Well	GUTTERSEN CC32-765
Field	WELD COUNTY (NOBLE NAD 83 GRID)	API/Legal	
Facility	SEC.29-T04N-R63W	Wellbore	GUTTERSEN CC32-765 AWB
Slot	SLOT#03 GUTTERSEN CC32-765 (2487'FSL & 1502'FWL,SEC.29)		

WELLPATH DATA (153 stations)										
MD [ft]	Inclination [°]	Azimuth [°]	TVD [ft]	Vert Sect [ft]	North [ft]	East [ft]	Latitude	Longitude	DLS [°/100ft]	Comments
0.00	0.000	5.040	0.00	0.00	0.00	0.00	40.2829400	-104.4656700	0.00	
135.00	0.480	5.040	135.00	-0.56	0.56	0.05	40.2829415	-104.4656698	0.36	First BH MWD Survey
229.00	0.500	15.310	229.00	-1.34	1.35	0.19	40.2829437	-104.4656693	0.10	
324.00	0.570	21.300	323.99	-2.17	2.19	0.47	40.2829460	-104.4656682	0.09	
418.00	0.610	6.850	417.99	-3.10	3.12	0.70	40.2829486	-104.4656673	0.16	
512.00	0.840	19.550	511.98	-4.24	4.27	0.99	40.2829517	-104.4656663	0.30	
607.00	1.110	242.530	606.97	-4.49	4.50	0.41	40.2829523	-104.4656683	1.91	
701.00	1.710	244.280	700.94	-3.52	3.47	-1.66	40.2829496	-104.4656758	0.64	
796.00	1.140	253.970	795.91	-2.72	2.60	-3.85	40.2829473	-104.4656837	0.65	
890.00	1.450	274.220	889.89	-2.61	2.43	-5.93	40.2829468	-104.4656912	0.58	
985.00	0.550	289.300	984.87	-2.91	2.67	-7.56	40.2829476	-104.4656970	0.98	
1079.00	0.890	77.650	1078.87	-3.20	2.97	-7.27	40.2829484	-104.4656959	1.48	
1173.00	1.550	82.310	1172.85	-3.46	3.30	-5.30	40.2829492	-104.4656889	0.71	
1268.00	1.600	75.350	1267.81	-3.89	3.80	-2.74	40.2829505	-104.4656797	0.21	
1362.00	1.720	83.960	1361.77	-4.28	4.28	-0.07	40.2829518	-104.4656701	0.29	
1456.00	2.120	93.810	1455.72	-4.22	4.32	3.07	40.2829518	-104.4656588	0.55	
1551.00	2.040	100.750	1550.66	-3.68	3.89	6.48	40.2829505	-104.4656466	0.28	
1645.00	2.190	110.300	1644.60	-2.64	2.95	9.81	40.2829478	-104.4656347	0.41	
1740.00	2.110	116.210	1739.53	-1.13	1.55	13.08	40.2829438	-104.4656231	0.25	
1834.00	1.430	159.340	1833.49	0.79	-0.31	15.05	40.2829387	-104.4656161	1.54	
1906.00	1.180	153.570	1905.47	2.32	-1.82	15.69	40.2829345	-104.4656138	0.39	
1983.00	1.550	170.170	1982.45	4.07	-3.55	16.22	40.2829297	-104.4656120	0.70	
2077.00	0.530	262.620	2076.43	5.37	-4.86	16.01	40.2829261	-104.4656128	1.77	
2172.00	0.030	36.020	2171.43	5.40	-4.90	15.59	40.2829261	-104.4656143	0.58	
2266.00	2.370	6.880	2265.41	3.45	-2.95	15.84	40.2829314	-104.4656134	2.49	
2361.00	4.550	7.630	2360.23	-2.20	2.74	16.57	40.2829470	-104.4656105	2.30	
2455.00	6.280	8.050	2453.80	-10.95	11.52	17.79	40.2829711	-104.4656058	1.84	
2550.00	8.120	7.890	2548.05	-22.68	23.31	19.44	40.2830034	-104.4655994	1.94	
2644.00	9.720	8.060	2640.91	-37.04	37.75	21.46	40.2830429	-104.4655915	1.70	
2833.00	9.260	9.230	2827.32	-67.68	68.55	26.14	40.2831273	-104.4655735	0.26	
2928.00	9.500	9.560	2921.05	-82.87	83.83	28.66	40.2831692	-104.4655638	0.26	
3022.00	9.240	10.220	3013.80	-97.86	98.91	31.29	40.2832105	-104.4655537	0.30	
3117.00	9.340	9.390	3107.55	-112.88	114.02	33.90	40.2832519	-104.4655437	0.18	
3212.00	9.200	11.000	3201.31	-127.84	129.08	36.61	40.2832931	-104.4655334	0.31	
3306.00	9.240	10.590	3294.10	-142.54	143.87	39.43	40.2833336	-104.4655227	0.08	
3401.00	9.110	10.120	3387.88	-157.35	158.77	42.15	40.2833744	-104.4655123	0.16	
3495.00	8.970	10.430	3480.72	-171.79	173.31	44.79	40.2834143	-104.4655022	0.16	
3590.00	9.110	11.260	3574.54	-186.35	187.97	47.60	40.2834544	-104.4654916	0.20	
3684.00	9.400	9.010	3667.31	-201.14	202.85	50.25	40.2834952	-104.4654814	0.49	
3779.00	9.400	9.370	3761.04	-216.37	218.16	52.73	40.2835371	-104.4654719	0.06	
3873.00	9.370	9.120	3853.78	-231.41	233.29	55.19	40.2835786	-104.4654624	0.05	
3968.00	9.290	9.370	3947.52	-246.52	248.49	57.67	40.2836202	-104.4654529	0.09	
4062.00	9.290	9.270	4040.29	-261.41	263.47	60.12	40.2836612	-104.4654435	0.02	
4157.00	9.250	9.380	4134.05	-276.43	278.57	62.60	40.2837026	-104.4654340	0.05	
4252.00	9.300	10.110	4227.81	-291.43	293.66	65.20	40.2837439	-104.4654241	0.13	



Actual Wellpath Report  
GUTTERSEN CC32-765 AWP  
Page 3 of 7



REFERENCE WELLPATH IDENTIFICATION			
Operator	NOBLE ENERGY, INC	Well	GUTTERSEN CC32-765
Field	WELD COUNTY (NOBLE NAD 83 GRID)	API/Legal	
Facility	SEC.29-T04N-R63W	Wellbore	GUTTERSEN CC32-765 AWB
Slot	SLOT#03 GUTTERSEN CC32-765 (2487'FSL & 1502'FWL,SEC.29)		

WELLPATH DATA (153 stations)										
MD [ft]	Inclination [°]	Azimuth [°]	TVD [ft]	Vert Sect [ft]	North [ft]	East [ft]	Latitude	Longitude	DLS [°/100ft]	Comments
4346.00	9.270	10.310	4320.57	-306.26	308.59	67.88	40.2837848	-104.4654138	0.05	
4441.00	9.350	9.440	4414.32	-321.31	323.73	70.52	40.2838263	-104.4654037	0.17	
4535.00	9.110	9.950	4507.11	-336.08	338.59	73.06	40.2838670	-104.4653940	0.27	
4630.00	9.270	9.750	4600.89	-350.94	353.54	75.65	40.2839080	-104.4653841	0.17	
4726.00	9.300	9.190	4695.63	-366.13	368.81	78.20	40.2839498	-104.4653743	0.10	
4819.00	9.190	9.630	4787.42	-380.78	383.55	80.64	40.2839902	-104.4653649	0.14	
4913.00	9.430	9.420	4880.18	-395.69	398.55	83.16	40.2840313	-104.4653553	0.26	
5008.00	9.240	9.540	4973.92	-410.80	413.75	85.70	40.2840729	-104.4653456	0.20	
5102.00	8.880	10.250	5066.75	-425.29	428.33	88.24	40.2841128	-104.4653358	0.40	
5197.00	8.730	10.580	5160.63	-439.51	442.64	90.87	40.2841520	-104.4653258	0.17	
5291.00	8.940	9.860	5253.52	-453.63	456.84	93.43	40.2841909	-104.4653161	0.25	
5386.00	8.880	9.140	5347.37	-468.05	471.36	95.86	40.2842307	-104.4653067	0.13	
5480.00	9.280	10.200	5440.19	-482.59	485.98	98.35	40.2842707	-104.4652972	0.46	
5575.00	9.110	11.200	5533.97	-497.41	500.89	101.17	40.2843116	-104.4652865	0.25	
5669.00	9.220	9.990	5626.77	-512.03	515.61	103.92	40.2843519	-104.4652760	0.24	
5764.00	9.090	11.170	5720.56	-526.79	530.47	106.69	40.2843926	-104.4652654	0.24	
5858.00	9.130	10.710	5813.38	-541.30	545.08	109.52	40.2844326	-104.4652547	0.09	
5953.00	8.260	9.630	5907.28	-555.35	559.21	112.06	40.2844713	-104.4652450	0.93	
6047.00	0.780	180.880	6000.99	-561.34	565.24	113.18	40.2844878	-104.4652407	9.61	
6142.00	8.680	189.640	6095.59	-553.66	557.52	111.97	40.2844667	-104.4652454	8.33	
6237.00	15.240	180.850	6188.48	-534.14	537.94	110.58	40.2844130	-104.4652512	7.15	
6331.00	20.300	172.960	6277.98	-505.53	509.38	112.40	40.2843345	-104.4652459	5.95	
6425.00	29.340	176.460	6363.21	-466.19	470.13	115.83	40.2842267	-104.4652352	9.74	
6520.00	39.820	178.330	6441.32	-412.36	416.35	118.16	40.2840790	-104.4652291	11.09	
6614.00	48.400	181.400	6508.76	-347.04	350.99	118.18	40.2838996	-104.4652318	9.40	
6709.00	59.230	179.240	6564.77	-270.54	274.44	117.85	40.2836895	-104.4652362	11.55	
6803.00	67.970	178.280	6606.53	-186.43	190.35	119.70	40.2834586	-104.4652331	9.34	
6898.00	75.110	175.660	6636.59	-96.40	100.43	124.50	40.2832117	-104.4652196	7.96	
6992.00	83.400	173.480	6654.10	-4.32	8.58	133.25	40.2829593	-104.4651921	9.11	
7087.00	90.060	176.210	6659.52	90.30	-85.82	141.76	40.2826999	-104.4651655	7.57	
7182.00	89.750	177.450	6659.68	185.28	-180.67	147.02	40.2824394	-104.4651507	1.35	
7276.00	89.600	178.520	6660.21	279.27	-274.61	150.32	40.2821814	-104.4651427	1.15	
7370.00	90.120	180.420	6660.44	373.24	-368.60	151.19	40.2819234	-104.4651436	2.10	
7465.00	89.080	181.360	6661.10	468.13	-463.58	149.72	40.2816628	-104.4651528	1.48	
7559.00	90.280	181.900	6661.63	561.96	-557.54	147.04	40.2814050	-104.4651663	1.40	
7654.00	90.400	181.820	6661.07	656.76	-652.49	143.96	40.2811445	-104.4651814	0.15	
7749.00	89.630	180.170	6661.04	751.64	-747.47	142.31	40.2808838	-104.4651912	1.92	
7843.00	88.000	177.690	6662.98	845.60	-841.43	144.06	40.2806259	-104.4651889	3.16	
7938.00	90.250	176.440	6664.44	940.56	-936.28	148.93	40.2803654	-104.4651754	2.71	
8032.00	89.780	177.210	6664.41	1034.54	-1030.14	154.13	40.2801076	-104.4651607	0.96	
8126.00	89.780	177.420	6664.77	1128.52	-1124.03	158.54	40.2798497	-104.4651488	0.22	
8221.00	89.940	177.020	6665.00	1223.51	-1218.92	163.14	40.2795891	-104.4651363	0.45	
8316.00	89.450	179.460	6665.51	1318.50	-1313.87	166.06	40.2793284	-104.4651298	2.62	
8410.00	89.750	181.240	6666.17	1412.43	-1407.86	165.49	40.2790705	-104.4651358	1.92	
8504.00	89.690	181.360	6666.63	1506.29	-1501.83	163.35	40.2788126	-104.4651474	0.14	

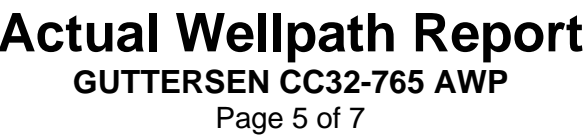


Actual Wellpath Report  
GUTTERSEN CC32-765 AWP  
Page 4 of 7



REFERENCE WELLPATH IDENTIFICATION			
Operator	NOBLE ENERGY, INC	Well	GUTTERSEN CC32-765
Field	WELD COUNTY (NOBLE NAD 83 GRID)	API/Legal	
Facility	SEC.29-T04N-R63W	Wellbore	GUTTERSEN CC32-765 AWB
Slot	SLOT#03 GUTTERSEN CC32-765 (2487'FSL & 1502'FWL,SEC.29)		

WELLPATH DATA (153 stations)										
MD [ft]	Inclination [°]	Azimuth [°]	TVD [ft]	Vert Sect [ft]	North [ft]	East [ft]	Latitude	Longitude	DLS [°/100ft]	Comments
8599.00	90.250	181.430	6666.67	1601.14	-1596.80	161.04	40.2785520	-104.4651596	0.59	
8693.00	89.050	180.990	6667.25	1695.00	-1690.78	159.06	40.2782941	-104.4651707	1.36	
8788.00	88.830	181.140	6669.01	1789.86	-1785.75	157.29	40.2780335	-104.4651810	0.28	
8882.00	89.260	180.600	6670.57	1883.74	-1879.72	155.86	40.2777756	-104.4651900	0.73	
8977.00	90.860	181.220	6670.47	1978.63	-1974.71	154.36	40.2775149	-104.4651994	1.81	
9072.00	90.620	181.660	6669.25	2073.47	-2069.67	151.97	40.2772544	-104.4652119	0.53	
9166.00	90.370	181.570	6668.43	2167.29	-2163.63	149.32	40.2769966	-104.4652253	0.28	
9261.00	91.820	183.590	6666.62	2261.99	-2258.51	145.04	40.2767363	-104.4652446	2.62	
9355.00	91.110	181.270	6664.22	2355.69	-2352.38	141.06	40.2764787	-104.4652628	2.58	
9450.00	89.510	177.080	6663.70	2450.65	-2447.35	142.43	40.2762180	-104.4652619	4.72	
9544.00	90.280	175.790	6663.87	2544.60	-2541.16	148.27	40.2759603	-104.4652449	1.60	
9638.00	90.460	177.900	6663.27	2638.57	-2635.01	153.45	40.2757026	-104.4652303	2.25	
9733.00	89.780	177.340	6663.07	2733.57	-2729.93	157.39	40.2754419	-104.4652201	0.93	
9828.00	90.280	177.210	6663.02	2828.55	-2824.82	161.91	40.2751813	-104.4652079	0.54	
9922.00	90.620	177.540	6662.28	2922.54	-2918.72	166.21	40.2749235	-104.4651964	0.50	
10017.00	90.430	177.140	6661.41	3017.53	-3013.62	170.62	40.2746629	-104.4651845	0.47	
10111.00	90.180	177.130	6660.91	3111.51	-3107.50	175.32	40.2744050	-104.4651716	0.27	
10206.00	90.060	177.120	6660.71	3206.50	-3202.38	180.08	40.2741444	-104.4651585	0.13	
10300.00	89.750	179.290	6660.87	3300.49	-3296.32	183.03	40.2738865	-104.4651519	2.33	
10394.00	89.570	178.660	6661.42	3394.48	-3390.31	184.71	40.2736285	-104.4651498	0.70	
10489.00	89.380	177.950	6662.29	3489.47	-3485.26	187.52	40.2733678	-104.4651437	0.77	
10583.00	89.050	178.650	6663.58	3583.46	-3579.21	190.31	40.2731098	-104.4651377	0.82	
10678.00	89.780	179.080	6664.55	3678.45	-3674.19	192.19	40.2728490	-104.4651349	0.89	
10773.00	90.000	180.180	6664.73	3773.42	-3769.18	192.80	40.2725883	-104.4651367	1.18	
10867.00	90.830	180.190	6664.05	3867.36	-3863.18	192.50	40.2723303	-104.4651417	0.88	
10962.00	90.280	179.760	6663.13	3962.30	-3958.17	192.54	40.2720696	-104.4651455	0.73	
11056.00	90.370	179.040	6662.60	4056.28	-4052.17	193.53	40.2718115	-104.4651459	0.77	
11150.00	90.030	178.970	6662.27	4150.27	-4146.15	195.16	40.2715535	-104.4651440	0.37	
11245.00	90.280	178.490	6662.01	4245.26	-4241.13	197.26	40.2712928	-104.4651404	0.57	
11339.00	89.850	178.770	6661.91	4339.26	-4335.10	199.51	40.2710348	-104.4651363	0.55	
11434.00	88.400	177.380	6663.36	4434.25	-4430.03	202.70	40.2707741	-104.4651288	2.11	
11528.00	89.660	178.560	6664.95	4528.23	-4523.95	206.03	40.2705162	-104.4651208	1.84	
11622.00	89.110	179.150	6665.96	4622.21	-4617.93	207.91	40.2702582	-104.4651180	0.86	
11717.00	90.400	179.480	6666.37	4717.19	-4712.92	209.04	40.2699974	-104.4651179	1.40	
11812.00	89.660	178.470	6666.32	4812.18	-4807.90	210.74	40.2697367	-104.4651158	1.32	
11906.00	90.710	179.020	6666.01	4906.17	-4901.88	212.80	40.2694787	-104.4651124	1.26	
12001.00	90.310	179.300	6665.17	5001.16	-4996.86	214.20	40.2692179	-104.4651113	0.51	
12095.00	90.370	179.350	6664.61	5095.14	-5090.86	215.30	40.2689599	-104.4651113	0.08	
12190.00	90.400	179.350	6663.97	5190.11	-5185.85	216.38	40.2686991	-104.4651114	0.03	
12284.00	90.310	179.470	6663.39	5284.09	-5279.84	217.35	40.2684411	-104.4651119	0.16	
12378.00	90.460	179.150	6662.76	5378.07	-5373.83	218.48	40.2681831	-104.4651118	0.38	
12473.00	90.180	179.290	6662.23	5473.05	-5468.82	219.77	40.2679223	-104.4651111	0.33	
12568.00	89.970	178.740	6662.10	5568.04	-5563.81	221.41	40.2676615	-104.4651092	0.62	
12663.00	89.350	178.150	6662.67	5663.04	-5658.77	223.98	40.2674008	-104.4651040	0.90	
12757.00	89.860	178.800	6663.31	5757.03	-5752.73	226.49	40.2671428	-104.4650989	0.88	



WELLPATH DATA (153 stations) † = interpolated, ‡ = extrapolated station										
MD [ft]	Inclination [°]	Azimuth [°]	TVD [ft]	Vert Sect [ft]	North [ft]	East [ft]	Latitude	Longitude	DLS [°/100ft]	Comments
12852.00	90.160	181.140	6663.30	5851.98	-5847.73	226.54	40.2668821	-104.4651027	2.48	
12946.00	90.220	180.500	6662.98	5945.88	-5941.72	225.19	40.2666241	-104.4651115	0.68	
13041.00	90.440	181.400	6662.44	6040.76	-6036.70	223.62	40.2663635	-104.4651211	0.98	
13135.00	90.160	181.690	6661.95	6134.60	-6130.66	221.08	40.2661056	-104.4651341	0.43	
13230.00	89.860	181.050	6661.93	6229.45	-6225.64	218.81	40.2658450	-104.4651462	0.74	
13324.00	89.670	180.700	6662.31	6323.34	-6319.62	217.37	40.2655871	-104.4651553	0.42	
13419.00	90.160	181.010	6662.46	6418.24	-6414.61	215.96	40.2653264	-104.4651643	0.61	
13513.00	90.260	180.850	6662.11	6512.13	-6508.60	214.43	40.2650685	-104.4651737	0.20	
13608.00	89.610	180.800	6662.22	6607.03	-6603.59	213.06	40.2648078	-104.4651826	0.69	
13702.00	89.330	180.810	6663.09	6700.92	-6697.58	211.74	40.2645499	-104.4651913	0.30	
13796.00	89.890	180.500	6663.73	6794.83	-6791.57	210.67	40.2642919	-104.4651990	0.68	
13890.00	90.630	178.680	6663.30	6888.80	-6885.56	211.34	40.2640339	-104.4652006	2.09	
14080.00	89.730	177.640	6662.70	7078.79	-7075.46	217.44	40.2635125	-104.4651866	0.72	
14174.00	89.980	179.500	6662.94	7172.78	-7169.42	219.79	40.2632545	-104.4651822	2.00	
14269.00	91.270	180.040	6661.91	7267.74	-7264.41	220.17	40.2629938	-104.4651848	1.47	
14363.00	90.530	179.050	6660.43	7361.70	-7358.40	220.91	40.2627358	-104.4651860	1.31	
14457.00	90.130	179.290	6659.89	7455.68	-7452.39	222.28	40.2624778	-104.4651851	0.50	Last BH MWD Survey
14490.00‡	90.130	179.290	6659.81	7488.68	-7485.38	222.69	40.2623872	-104.4651850	0.00	Projection to Bit

HOLE & CASING SECTIONS - Ref Wellbore: GUTTERSEN CC32-765 AWB      Ref Wellpath: GUTTERSEN CC32-765 AWP									
String/Diameter	Start MD [ft]	End MD [ft]	Interval [ft]	Start TVD [ft]	End TVD [ft]	Start N/S [ft]	Start E/W [ft]	End N/S [ft]	End E/W [ft]
9.625in Casing Surface	30.00	1949.00	1919.00	30.00	1948.46	0.03	0.00	-2.71	16.03
8.5in Open Hole	1949.00	14457.00	12508.00	1948.46	6659.89	-2.71	16.03	-7452.39	222.28

TARGETS								
Name	TVD [ft]	North [ft]	East [ft]	Grid East [US ft]	Grid North [US ft]	Latitude	Longitude	Shape
SEC.29-T4N-R63W GUTTERSEN CC32	1.00	-0.52	-44.64	3288517.85	1347598.75	40.2829400	-104.4658300	polygon
	2D Polygon: dimensions not calculated							
SEC.32-T4N-R63W GUTTERSEN CC32	1.00	-0.52	-44.64	3288517.85	1347598.75	40.2829400	-104.4658300	polygon
	2D Polygon: dimensions not calculated							
GUTTERSEN CC32-765 BHL PLAN (200'FSL & 1658'FWL,SEC.32)	6661.00	-7486.62	239.34	3288801.82	1340112.99	40.2623833	-104.4651254	point
GUTTERSEN CC32-765 LP PLAN (2417'FSL & 1639'FWL,SEC.29)	6661.00	-66.53	138.56	3288701.04	1347532.75	40.2827530	-104.4651762	point





Actual Wellpath Report

GUTTERSEN CC32-765 AWP

Page 6 of 7



REFERENCE WELLPATH IDENTIFICATION			
Operator	NOBLE ENERGY, INC	Well	GUTTERSEN CC32-765
Field	WELD COUNTY (NOBLE NAD 83 GRID)	API/Legal	
Facility	SEC.29-T04N-R63W	Wellbore	GUTTERSEN CC32-765 AWB
Slot	SLOT#03 GUTTERSEN CC32-765 (2487'FSL & 1502'FWL,SEC.29)		

WELLPATH COMPOSITION - Ref Wellbore: GUTTERSEN CC32-765 AWB    Ref Wellpath: GUTTERSEN CC32-765 AWP					
Start MD [ft]	End MD [ft]	Positional Uncertainty Model	Log Name/Comment	Wellbore	Survey Date
0.00	1834.00	OWSG MWD rev2 (MS+IFR1)	BH ATC Surface OWSG MWD MS+IFR <135' - 1834'>	GUTTERSEN CC32-765 AWB	5/16/2022
1834.00	14490.00	OWSG MWD rev2 (MS+IFR1)	8.5" AT-Curve Pro - OWSG MWD rev2 (MS+IFR1) <1906'-14457'>	GUTTERSEN CC32-765 AWB	5/31/2022



Actual Wellpath Report  
GUTTERSEN CC32-765 AWP  
Page 7 of 7



REFERENCE WELLPATH IDENTIFICATION			
Operator	NOBLE ENERGY, INC	Well	GUTTERSEN CC32-765
Field	WELD COUNTY (NOBLE NAD 83 GRID)	API/Legal	
Facility	SEC.29-T04N-R63W	Wellbore	GUTTERSEN CC32-765 AWB
Slot	SLOT#03 GUTTERSEN CC32-765 (2487'FSL & 1502'FWL,SEC.29)		

WELLPATH COMMENTS				
MD [ft]	Inclination [°]	Azimuth [°]	TVD [ft]	Comment
135.00	0.480	5.040	135.00	First BH MWD Survey
14457.00	90.130	179.290	6659.89	Last BH MWD Survey
14490.00	90.130	179.290	6659.81	Projection to Bit