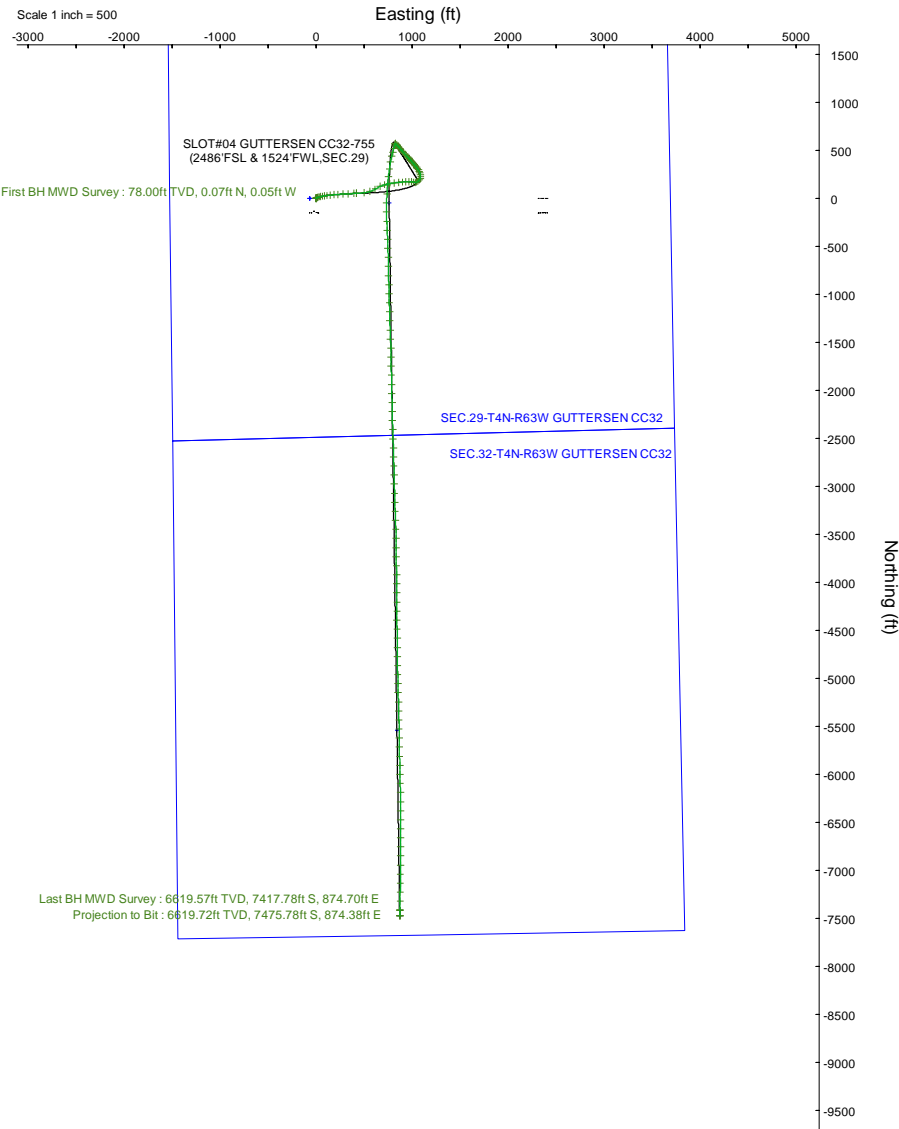
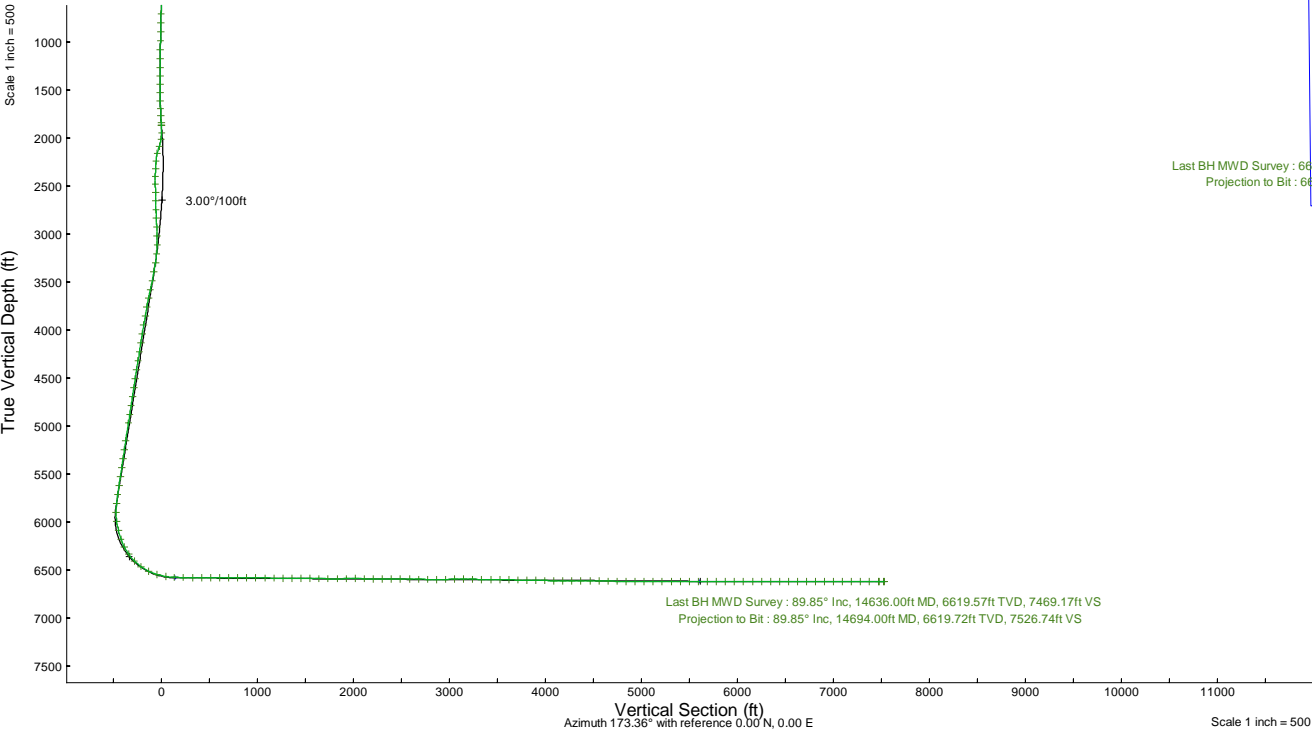


NOBLE ENERGY, INC

Location:	COLORADO	Slot:	SLOT#04 GUTTERSEN CC32-755 (2486'FSL & 1524'FWL,SEC.29)
Field:	WELD COUNTY (NOBLE NAD 83 GRID)	Well:	GUTTERSEN CC32-755
Facility:	SEC.29-T04N-R63W	Wellbore:	GUTTERSEN CC32-755 PWB

Plot reference wellpath is GUTTERSEN CC32-755 (REV-B.0) PWP	Grid System: NAD83 / Lambert Colorado SP, Northern Zone (501), US feet
True vertical depths are referenced to RIG (4762'GL+30'KB @4792'RKB) (RKB)	North Reference: Grid north
Reference wellpath measured depths are referenced to RIG (4762'GL+30'KB @4792'RKB) (RKB)	Scale: True distance
RIG (4762'GL+30'KB @4792'RKB) (RKB) to Mean Sea Level: 4792 feet	Coordinates are in feet referenced to Slot
Mean Sea Level to Ground level (At Slot: SLOT#04 GUTTERSEN CC32-755 (2486'FSL & 1524'FWL,SEC.29)): 0 feet	Depths are in feet
Offset wellpath MDs are referenced to each path's default MD datum	Created by: guenaler on 2022-06-17; Database: WA_Denver

Location Information					
Facility Name			Grid East (US ft)	Grid North (US ft)	Latitude
SEC.29-T04N-R63W			3288517.851	1347598.752	40°16'58.5840"N
Slot			Grid East (US ft)	Grid North (US ft)	Latitude
SLOT#04 GUTTERSEN CC32-755 (2486'FSL & 1524'FWL,SEC.29)			3288584.804	1347599.533	40°16'58.5840"N
RIG (4762'GL+30'KB @4792'RKB) to Ground level (At Slot: SLOT#04 GUTTERSEN CC32-755 (2486'FSL & 1524'FWL,SEC.29))			4792ft		
Mean Sea Level to Ground level (At Slot: SLOT#04 GUTTERSEN CC32-755 (2486'FSL & 1524'FWL,SEC.29))			0ft		
RIG (4762'GL+30'KB @4792'RKB) (RKB) to Mean Sea Level			4792ft		





Actual Wellpath Report
GUTTERSEN CC32-755 AWP
Page 1 of 7



REFERENCE WELLPATH IDENTIFICATION			
Operator	NOBLE ENERGY, INC	Well	GUTTERSEN CC32-755
Field	WELD COUNTY (NOBLE NAD 83 GRID)	API/Legal	
Facility	SEC.29-T04N-R63W	Wellbore	GUTTERSEN CC32-755 AWB
Slot	SLOT#04 GUTTERSEN CC32-755 (2486'FSL & 1524'FWL,SEC.29)		

REPORT SETUP INFORMATION			
Projection System	NAD83 / Lambert Colorado SP, Northern Zone (501), US feet	Software System	WellArchitect® 6.0
North Reference	Grid	User	Guenaler
Scale	0.999957	Report Generated	6/17/2022 at 11:37:53 AM
Convergence at slot	0.67° East	Database	WA_Denver

WELLPATH LOCATION						
	Local coordinates		Grid coordinates		Geographic coordinates	
	North[ft]	East[ft]	Easting[US ft]	Northing[US ft]	Latitude	Longitude
Slot Location	0.78	66.96	3288584.80	1347599.53	40.2829400°	-104.4655900°
Facility Reference Pt			3288517.85	1347598.75	40.2829400°	-104.4658300°
Field Reference Pt			3000000.00	4454105.15	48.7761986°	-105.5000000°

WELLPATH DATUM			
Calculation method	Minimum curvature	RIG (4762'GL+30'KB@4792'RKB) (RKB) to Facility Vertical Datum	4792.00ft
Horizontal Reference Pt	Slot	RIG (4762'GL+30'KB@4792'RKB) (RKB) to Mean Sea Level	4792.00ft
Vertical Reference Pt	RIG (4762'GL+30'KB@4792'RKB) (RKB)	RIG (4762'GL+30'KB@4792'RKB) (RKB) to Ground Level at Slot (SLOT#04 GUTTERSEN CC32-755 (2486'FSL & 1524'FWL,SEC.29))	4792.00ft
MD Reference Pt	RIG (4762'GL+30'KB@4792'RKB) (RKB)	Section Origin	N 0.00, E 0.00 ft
Field Vertical Reference	Mean Sea Level	Section Azimuth	173.36°



Actual Wellpath Report
GUTTERSEN CC32-755 AWP
Page 2 of 7



REFERENCE WELLPATH IDENTIFICATION			
Operator	NOBLE ENERGY, INC	Well	GUTTERSEN CC32-755
Field	WELD COUNTY (NOBLE NAD 83 GRID)	API/Legal	
Facility	SEC.29-T04N-R63W	Wellbore	GUTTERSEN CC32-755 AWB
Slot	SLOT#04 GUTTERSEN CC32-755 (2486'FSL & 1524'FWL,SEC.29)		

WELLPATH DATA (158 stations)										
MD [ft]	Inclination [°]	Azimuth [°]	TVD [ft]	Vert Sect [ft]	North [ft]	East [ft]	Latitude	Longitude	DLS [°/100ft]	Comments
0.00	0.000	322.280	0.00	0.00	0.00	0.00	40.2829400	-104.4655900	0.00	
78.00	0.130	322.280	78.00	-0.08	0.07	-0.05	40.2829402	-104.4655902	0.17	First BH MWD Survey
173.00	0.300	90.670	173.00	-0.14	0.15	0.13	40.2829404	-104.4655895	0.41	
263.00	0.410	46.690	263.00	-0.30	0.37	0.60	40.2829410	-104.4655878	0.32	
326.00	0.650	50.560	326.00	-0.63	0.75	1.04	40.2829420	-104.4655862	0.38	
421.00	0.750	41.230	420.99	-1.34	1.56	1.86	40.2829442	-104.4655833	0.16	
516.00	1.120	45.330	515.98	-2.32	2.68	2.93	40.2829473	-104.4655794	0.40	
610.00	1.840	55.080	609.94	-3.61	4.19	4.83	40.2829514	-104.4655725	0.81	
704.00	2.810	63.700	703.87	-5.10	6.08	8.13	40.2829564	-104.4655606	1.09	
799.00	4.400	68.100	798.67	-6.84	8.47	13.60	40.2829628	-104.4655409	1.70	
893.00	5.940	70.520	892.29	-8.87	11.44	21.53	40.2829707	-104.4655124	1.65	
988.00	8.090	74.750	986.57	-10.96	14.83	32.61	40.2829797	-104.4654725	2.33	
1082.00	10.370	77.900	1079.35	-12.76	18.35	47.27	40.2829888	-104.4654198	2.48	
1177.00	12.790	80.180	1172.41	-14.15	21.93	65.99	40.2829981	-104.4653526	2.59	
1271.00	15.500	81.760	1263.55	-15.08	25.51	88.68	40.2830072	-104.4652711	2.91	
1365.00	18.440	82.770	1353.45	-15.58	29.18	115.87	40.2830164	-104.4651735	3.14	
1460.00	21.670	83.960	1442.68	-15.55	32.92	148.22	40.2830256	-104.4650574	3.43	
1554.00	25.460	84.670	1528.82	-14.91	36.62	185.61	40.2830346	-104.4649232	4.04	
1648.00	29.320	85.600	1612.27	-13.54	40.27	228.69	40.2830432	-104.4647687	4.13	
1743.00	33.620	86.430	1693.28	-11.22	43.69	278.16	40.2830510	-104.4645913	4.55	
1837.00	38.290	87.200	1769.35	-7.87	46.73	333.25	40.2830576	-104.4643937	4.99	
1932.00	43.400	87.430	1841.19	-3.58	49.64	395.29	40.2830636	-104.4641712	5.38	
1963.00	44.540	88.020	1863.50	-1.94	50.49	416.80	40.2830652	-104.4640941	3.91	
1969.00	44.940	87.910	1867.76	-1.60	50.64	421.02	40.2830655	-104.4640790	6.79	
2077.00	44.910	82.860	1944.26	1.10	56.77	496.99	40.2830799	-104.4638064	3.30	
2172.00	41.850	71.680	2013.40	-5.62	70.93	560.46	40.2831167	-104.4635784	8.69	
2266.00	38.800	59.150	2085.17	-24.08	95.93	615.61	40.2831836	-104.4633797	9.20	
2361.00	36.100	64.740	2160.61	-45.23	123.15	666.50	40.2832567	-104.4631961	4.57	
2455.00	32.850	75.350	2238.16	-57.64	141.44	716.27	40.2833052	-104.4630170	7.25	
2550.00	33.030	79.250	2317.90	-63.08	152.78	766.64	40.2833348	-104.4628360	2.24	
2644.00	28.510	82.110	2398.65	-65.41	160.65	814.06	40.2833548	-104.4626657	5.05	
2739.00	26.740	84.710	2482.82	-65.40	165.73	857.80	40.2833674	-104.4625087	2.25	
2833.00	22.790	86.320	2568.16	-63.95	168.85	897.05	40.2833747	-104.4623680	4.26	
2928.00	21.380	87.100	2656.18	-61.87	170.91	932.70	40.2833792	-104.4622401	1.52	
3023.00	18.150	91.260	2745.58	-58.71	171.46	964.80	40.2833797	-104.4621250	3.71	
3117.00	15.410	92.900	2835.57	-54.62	170.50	991.92	40.2833762	-104.4620279	2.96	
3212.00	11.930	95.080	2927.86	-50.54	169.00	1014.31	40.2833713	-104.4619477	3.70	
3306.00	9.070	99.260	3020.28	-46.53	166.94	1031.30	40.2833651	-104.4618869	3.15	
3401.00	9.960	75.010	3114.01	-45.67	167.86	1046.64	40.2833672	-104.4618319	4.29	
3495.00	12.150	53.890	3206.30	-51.72	175.80	1062.49	40.2833884	-104.4617747	4.86	
3590.00	11.890	35.530	3299.25	-63.90	189.66	1076.26	40.2834260	-104.4617248	4.02	
3684.00	11.730	19.230	3391.29	-79.68	206.57	1085.03	40.2834722	-104.4616926	3.54	
3779.00	11.800	5.290	3484.31	-97.87	225.36	1089.11	40.2835236	-104.4616772	2.99	
3874.00	12.150	349.530	3577.27	-117.36	244.87	1088.19	40.2835772	-104.4616797	3.45	
3968.00	12.080	333.540	3669.20	-136.48	263.41	1082.01	40.2836283	-104.4617011	3.56	



Actual Wellpath Report
GUTTERSEN CC32-755 AWP
Page 3 of 7



REFERENCE WELLPATH IDENTIFICATION			
Operator	NOBLE ENERGY, INC	Well	GUTTERSEN CC32-755
Field	WELD COUNTY (NOBLE NAD 83 GRID)	API/Legal	
Facility	SEC.29-T04N-R63W	Wellbore	GUTTERSEN CC32-755 AWB
Slot	SLOT#04 GUTTERSEN CC32-755 (2486'FSL & 1524'FWL,SEC.29)		

WELLPATH DATA (158 stations)										
MD [ft]	Inclination [°]	Azimuth [°]	TVD [ft]	Vert Sect [ft]	North [ft]	East [ft]	Latitude	Longitude	DLS [°/100ft]	Comments
4062.00	10.820	333.630	3761.33	-154.04	280.12	1073.71	40.2836744	-104.4617302	1.34	
4157.00	10.830	328.160	3854.64	-170.51	295.69	1065.04	40.2837174	-104.4617606	1.08	
4252.00	10.620	323.300	3947.98	-186.17	310.29	1055.10	40.2837578	-104.4617956	0.98	
4346.00	10.780	323.540	4040.35	-201.29	324.31	1044.70	40.2837966	-104.4618323	0.18	
4441.00	10.660	319.450	4133.69	-216.29	338.13	1033.70	40.2838349	-104.4618711	0.81	
4535.00	10.770	319.910	4226.05	-230.84	351.46	1022.40	40.2838719	-104.4619111	0.15	
4630.00	10.780	319.500	4319.38	-245.62	365.00	1010.91	40.2839094	-104.4619517	0.08	
4725.00	10.810	319.880	4412.69	-260.43	378.57	999.40	40.2839470	-104.4619923	0.08	
4819.00	10.740	318.490	4505.04	-274.97	391.87	987.91	40.2839839	-104.4620329	0.29	
4913.00	10.620	317.570	4597.41	-289.18	404.82	976.26	40.2840198	-104.4620741	0.22	
5008.00	10.560	317.630	4690.79	-303.35	417.71	964.49	40.2840556	-104.4621158	0.06	
5102.00	10.630	317.340	4783.19	-317.35	430.45	952.81	40.2840909	-104.4621571	0.09	
5197.00	10.650	316.100	4876.56	-331.43	443.22	940.79	40.2841264	-104.4621997	0.24	
5291.00	10.830	317.530	4968.91	-345.50	456.00	928.80	40.2841618	-104.4622421	0.34	
5480.00	10.440	317.710	5154.66	-373.81	481.76	905.29	40.2842333	-104.4623253	0.21	
5575.00	10.380	318.700	5248.10	-387.85	494.56	893.85	40.2842688	-104.4623658	0.20	
5669.00	9.860	319.460	5340.64	-401.49	507.04	883.03	40.2843034	-104.4624040	0.57	
5764.00	10.190	319.810	5434.19	-415.25	519.64	872.32	40.2843383	-104.4624419	0.35	
5858.00	10.260	319.450	5526.69	-429.12	532.35	861.51	40.2843735	-104.4624801	0.10	
5953.00	10.530	319.460	5620.13	-443.35	545.37	850.37	40.2844097	-104.4625195	0.28	
6047.00	10.640	317.640	5712.53	-457.53	558.31	838.94	40.2844455	-104.4625599	0.37	
6142.00	7.620	315.100	5806.32	-469.60	569.26	828.58	40.2844759	-104.4625965	3.21	
6237.00	0.850	172.920	5901.06	-473.84	573.03	824.21	40.2844864	-104.4626120	8.74	
6331.00	8.810	198.410	5994.66	-466.61	565.49	822.02	40.2844658	-104.4626202	8.56	
6426.00	12.830	195.960	6087.95	-450.28	548.44	816.82	40.2844192	-104.4626396	4.26	
6520.00	21.410	195.110	6177.70	-424.66	521.79	809.47	40.2843462	-104.4626670	9.13	
6614.00	30.780	195.530	6262.02	-386.37	481.97	798.53	40.2842373	-104.4627079	9.97	
6698.00	35.740	192.930	6332.24	-343.32	437.32	787.28	40.2841151	-104.4627501	6.14	
6793.00	45.550	190.420	6404.24	-284.61	376.78	774.91	40.2839493	-104.4627970	10.47	
6887.00	55.700	188.240	6463.80	-214.83	305.16	763.24	40.2837531	-104.4628418	10.94	
6982.00	64.450	187.220	6511.15	-135.14	223.65	752.21	40.2835297	-104.4628847	9.26	
7076.00	74.320	184.180	6544.21	-49.30	136.22	743.56	40.2832900	-104.4629194	10.93	
7171.00	79.320	182.380	6565.87	41.79	43.90	738.29	40.2830368	-104.4629422	5.58	
7266.00	88.890	182.340	6575.61	135.01	-50.40	734.40	40.2827781	-104.4629601	10.07	
7360.00	89.420	178.410	6577.00	228.28	-144.37	733.78	40.2825202	-104.4629662	4.22	
7454.00	89.080	178.600	6578.23	321.89	-238.33	736.24	40.2822622	-104.4629614	0.41	
7549.00	89.690	177.320	6579.25	416.58	-333.26	739.62	40.2820016	-104.4629532	1.49	
7643.00	89.780	176.710	6579.69	510.39	-427.14	744.51	40.2817437	-104.4629396	0.66	
7738.00	89.230	178.540	6580.51	605.12	-522.05	748.45	40.2814831	-104.4629295	2.01	
7833.00	91.320	178.180	6580.05	699.75	-617.00	751.17	40.2812224	-104.4629237	2.23	
7927.00	89.290	179.170	6579.55	793.33	-710.97	753.34	40.2809644	-104.4629199	2.40	
8021.00	89.510	179.120	6580.53	886.85	-804.95	754.74	40.2807064	-104.4629188	0.24	
8116.00	89.320	177.720	6581.50	981.47	-899.91	757.36	40.2804457	-104.4629134	1.49	
8210.00	89.450	178.790	6582.51	1075.12	-993.86	760.23	40.2801877	-104.4629071	1.15	
8305.00	89.510	178.830	6583.38	1169.69	-1088.83	762.20	40.2799270	-104.4629040	0.08	



Actual Wellpath Report
GUTTERSEN CC32-755 AWP
Page 4 of 7



REFERENCE WELLPATH IDENTIFICATION			
Operator	NOBLE ENERGY, INC	Well	GUTTERSEN CC32-755
Field	WELD COUNTY (NOBLE NAD 83 GRID)	API/Legal	
Facility	SEC.29-T04N-R63W	Wellbore	GUTTERSEN CC32-755 AWB
Slot	SLOT#04 GUTTERSEN CC32-755 (2486'FSL & 1524'FWL,SEC.29)		

WELLPATH DATA (158 stations)										
MD [ft]	Inclination [°]	Azimuth [°]	TVD [ft]	Vert Sect [ft]	North [ft]	East [ft]	Latitude	Longitude	DLS [°/100ft]	Comments
8399.00	89.140	177.790	6584.48	1263.33	-1182.78	764.97	40.2796690	-104.4628980	1.17	
8494.00	88.890	178.420	6586.12	1357.99	-1277.72	768.11	40.2794083	-104.4628907	0.71	
8588.00	89.320	177.690	6587.58	1451.66	-1371.65	771.30	40.2791504	-104.4628832	0.90	
8683.00	89.510	177.840	6588.55	1546.38	-1466.57	775.01	40.2788897	-104.4628739	0.25	
8777.00	89.780	178.610	6589.14	1640.03	-1560.53	777.92	40.2786318	-104.4628674	0.87	
8872.00	89.420	178.780	6589.80	1734.62	-1655.50	780.08	40.2783710	-104.4628636	0.42	
8967.00	90.180	178.980	6590.13	1829.18	-1750.48	781.94	40.2781103	-104.4628610	0.83	
9061.00	91.080	178.980	6589.10	1922.72	-1844.46	783.61	40.2778523	-104.4628589	0.96	
9156.00	89.380	178.610	6588.72	2017.29	-1939.43	785.61	40.2775915	-104.4628557	1.83	
9250.00	88.950	179.010	6590.09	2110.85	-2033.40	787.56	40.2773335	-104.4628527	0.62	
9345.00	89.380	175.460	6591.47	2205.61	-2128.27	792.14	40.2770730	-104.4628402	3.76	
9439.00	90.580	181.170	6591.50	2299.22	-2222.19	794.91	40.2768151	-104.4628343	6.21	
9533.00	88.860	178.290	6591.96	2392.62	-2316.17	795.35	40.2765571	-104.4628366	3.57	
9628.00	89.480	178.190	6593.34	2487.27	-2411.11	798.27	40.2762965	-104.4628301	0.66	
9723.00	89.200	178.090	6594.43	2581.93	-2506.06	801.35	40.2760358	-104.4628231	0.31	
9817.00	89.420	178.490	6595.57	2675.57	-2600.01	804.15	40.2757778	-104.4628170	0.49	
9912.00	89.260	178.010	6596.66	2770.22	-2694.96	807.05	40.2755171	-104.4628105	0.53	
10006.00	89.450	178.230	6597.72	2863.89	-2788.90	810.14	40.2752591	-104.4628034	0.31	
10101.00	91.350	178.560	6597.06	2958.52	-2883.86	812.80	40.2749984	-104.4627979	2.03	
10195.00	90.950	178.560	6595.17	3052.11	-2977.81	815.16	40.2747405	-104.4627934	0.43	
10289.00	89.970	179.290	6594.41	3145.66	-3071.79	816.92	40.2744825	-104.4627910	1.30	
10384.00	88.830	177.750	6595.41	3240.27	-3166.75	819.38	40.2742217	-104.4627862	2.02	
10478.00	88.680	177.690	6597.45	3333.97	-3260.65	823.12	40.2739639	-104.4627767	0.17	
10573.00	89.380	177.890	6599.06	3428.67	-3355.56	826.78	40.2737032	-104.4627676	0.77	
10667.00	88.980	178.080	6600.41	3522.36	-3449.50	830.08	40.2734453	-104.4627596	0.47	
10762.00	89.200	179.280	6601.91	3616.94	-3544.46	832.27	40.2731846	-104.4627558	1.28	
10856.00	89.050	179.120	6603.35	3710.44	-3638.44	833.58	40.2729266	-104.4627550	0.23	
10951.00	88.740	179.470	6605.18	3804.91	-3733.41	834.75	40.2726659	-104.4627548	0.49	
11045.00	88.950	178.770	6607.08	3898.41	-3827.38	836.20	40.2724079	-104.4627536	0.78	
11140.00	88.650	179.560	6609.07	3992.90	-3922.35	837.58	40.2721472	-104.4627526	0.89	
11234.00	88.580	178.940	6611.34	4086.38	-4016.31	838.81	40.2718892	-104.4627521	0.66	
11329.00	90.000	178.670	6612.52	4180.94	-4111.28	840.79	40.2716285	-104.4627490	1.52	
11423.00	89.570	179.530	6612.87	4274.47	-4205.27	842.27	40.2713705	-104.4627477	1.02	
11517.00	89.510	180.750	6613.62	4367.81	-4299.26	842.04	40.2711125	-104.4627524	1.30	
11612.00	89.780	179.400	6614.21	4462.15	-4394.26	841.91	40.2708518	-104.4627569	1.45	
11706.00	89.480	178.940	6614.82	4555.66	-4488.25	843.28	40.2705937	-104.4627559	0.58	
11801.00	89.480	179.010	6615.68	4650.20	-4583.23	844.97	40.2703330	-104.4627538	0.07	
11896.00	89.420	179.340	6616.59	4744.71	-4678.21	846.34	40.2700722	-104.4627529	0.35	
11990.00	89.230	179.170	6617.70	4838.21	-4772.20	847.56	40.2698142	-104.4627525	0.27	
12085.00	90.060	179.460	6618.29	4932.69	-4867.19	848.70	40.2695535	-104.4627524	0.93	
12179.00	90.000	179.300	6618.24	5026.17	-4961.19	849.72	40.2692954	-104.4627527	0.18	
12273.00	89.600	177.960	6618.57	5119.77	-5055.16	851.96	40.2690374	-104.4627485	1.49	
12368.00	89.820	178.990	6619.05	5214.39	-5150.12	854.49	40.2687767	-104.4627435	1.11	
12463.00	89.940	177.130	6619.25	5309.07	-5245.06	857.71	40.2685160	-104.4627359	1.96	
12557.00	90.250	178.560	6619.09	5402.77	-5338.99	861.24	40.2682581	-104.4627272	1.56	



Actual Wellpath Report
GUTTERSEN CC32-755 AWP
Page 5 of 7



REFERENCE WELLPATH IDENTIFICATION			
Operator	NOBLE ENERGY, INC	Well	GUTTERSEN CC32-755
Field	WELD COUNTY (NOBLE NAD 83 GRID)	API/Legal	
Facility	SEC.29-T04N-R63W	Wellbore	GUTTERSEN CC32-755 AWB
Slot	SLOT#04 GUTTERSEN CC32-755 (2486'FSL & 1524'FWL,SEC.29)		

WELLPATH DATA (158 stations) † = interpolated, ‡ = extrapolated station										
MD [ft]	Inclination [°]	Azimuth [°]	TVD [ft]	Vert Sect [ft]	North [ft]	East [ft]	Latitude	Longitude	DLS [°/100ft]	Comments
12652.00	89.850	179.400	6619.01	5497.32	-5433.98	862.93	40.2679973	-104.4627251	0.98	
12747.00	89.820	179.660	6619.28	5591.77	-5528.97	863.71	40.2677365	-104.4627263	0.28	
12841.00	90.150	178.210	6619.31	5685.32	-5622.95	865.46	40.2674785	-104.4627240	1.58	
12936.00	89.850	179.160	6619.31	5779.91	-5717.93	867.64	40.2672178	-104.4627202	1.05	
13030.00	89.910	178.940	6619.50	5873.44	-5811.91	869.20	40.2669598	-104.4627185	0.24	
13124.00	89.820	178.710	6619.72	5967.01	-5905.89	871.13	40.2667017	-104.4627155	0.26	
13219.00	90.120	178.580	6619.77	6061.61	-6000.87	873.37	40.2664410	-104.4627115	0.34	
13314.00	89.880	178.660	6619.77	6156.21	-6095.84	875.66	40.2661802	-104.4627073	0.27	
13408.00	90.340	178.990	6619.59	6249.78	-6189.82	877.59	40.2659222	-104.4627043	0.60	
13503.00	90.120	179.020	6619.21	6344.32	-6284.80	879.24	40.2656615	-104.4627024	0.23	
13597.00	90.030	180.450	6619.09	6437.74	-6378.80	879.67	40.2654034	-104.4627047	1.52	
13691.00	89.630	180.070	6619.37	6531.05	-6472.80	879.25	40.2651455	-104.4627102	0.59	
13786.00	90.060	180.500	6619.63	6625.36	-6567.80	878.77	40.2648847	-104.4627159	0.64	
13880.00	89.540	180.310	6619.95	6718.65	-6661.79	878.11	40.2646267	-104.4627222	0.59	
13975.00	90.060	180.110	6620.29	6812.97	-6756.79	877.76	40.2643660	-104.4627274	0.59	
14069.00	90.120	180.160	6620.14	6906.31	-6850.79	877.54	40.2641080	-104.4627322	0.08	
14163.00	90.180	180.010	6619.89	6999.66	-6944.79	877.40	40.2638500	-104.4627366	0.17	
14258.00	90.120	180.400	6619.64	7093.99	-7039.79	877.06	40.2635893	-104.4627418	0.42	
14352.00	90.180	180.010	6619.40	7187.31	-7133.79	876.72	40.2633313	-104.4627470	0.42	
14447.00	90.030	180.540	6619.22	7281.62	-7228.79	876.27	40.2630705	-104.4627526	0.58	
14541.00	89.850	180.520	6619.32	7374.89	-7322.78	875.40	40.2628126	-104.4627596	0.19	
14636.00	89.850	180.320	6619.57	7469.17	-7417.78	874.70	40.2625518	-104.4627661	0.21	Last BH MWD Survey
14694.00‡	89.850	180.320	6619.72	7526.74	-7475.78	874.38	40.2623927	-104.4627697	0.00	Projection to Bit

HOLE & CASING SECTIONS - Ref Wellbore: GUTTERSEN CC32-755 AWB Ref Wellpath: GUTTERSEN CC32-755 AWP									
String/Diameter	Start MD [ft]	End MD [ft]	Interval [ft]	Start TVD [ft]	End TVD [ft]	Start N/S [ft]	Start E/W [ft]	End N/S [ft]	End E/W [ft]
9.625in Open Hole	30.00	1980.00	1950.00	30.00	1875.55	0.01	-0.01	50.96	428.78
8.5in Open Hole	1980.00	14636.00	12656.00	1875.55	6619.57	50.96	428.78	-7417.78	874.70



Actual Wellpath Report

GUTTERSEN CC32-755 AWP

Page 6 of 7



REFERENCE WELLPATH IDENTIFICATION			
Operator	NOBLE ENERGY, INC	Well	GUTTERSEN CC32-755
Field	WELD COUNTY (NOBLE NAD 83 GRID)	API/Legal	
Facility	SEC.29-T04N-R63W	Wellbore	GUTTERSEN CC32-755 AWB
Slot	SLOT#04 GUTTERSEN CC32-755 (2486'FSL & 1524'FWL,SEC.29)		

TARGETS								
Name	TVD [ft]	North [ft]	East [ft]	Grid East [US ft]	Grid North [US ft]	Latitude	Longitude	Shape
SEC.29-T4N-R63W GUTTERSEN CC32	1.00	-0.78	-66.96	3288517.85	1347598.75	40.2829400	-104.4658300	polygon
	2D Polygon: dimensions not calculated							
SEC.32-T4N-R63W GUTTERSEN CC32	1.00	-0.78	-66.96	3288517.85	1347598.75	40.2829400	-104.4658300	polygon
	2D Polygon: dimensions not calculated							
GUTTERSEN CC32-755 LP PLAN (2417'FSL & 2284'FWL,SEC.29)	6580.00	-50.45	760.55	3289345.32	1347549.08	40.2827771	-104.4628664	point
GUTTERSEN CC32-755 T1	6617.00	-5540.05	841.97	3289426.74	1342059.73	40.2677068	-104.4628047	point
GUTTERSEN CC32-755 BHL PLAN (200'FSL & 2312'FWL,SEC.32)	6617.07	-7476.38	870.64	3289455.40	1340123.49	40.2623911	-104.4627831	point

WELLPATH COMPOSITION - Ref Wellbore: GUTTERSEN CC32-755 AWB Ref Wellpath: GUTTERSEN CC32-755 AWP					
Start MD [ft]	End MD [ft]	Positional Uncertainty Model	Log Name/Comment	Wellbore	Survey Date
0.00	1969.00	BH Generic gyro - northseeking (Standard)	Gyrodata Surface Gyro <78' - 1969'>	GUTTERSEN CC32-755 AWB	5/16/2022
1969.00	14694.00	OWSG MWD rev2 (MS+IFR1)	8.5" AT-Curve Pro - OWSG MWD rev2 (MS+IFR1) <2077'- 14636'>	GUTTERSEN CC32-755 AWB	5/31/2022



Actual Wellpath Report
GUTTERSEN CC32-755 AWP
Page 7 of 7



REFERENCE WELLPATH IDENTIFICATION			
Operator	NOBLE ENERGY, INC	Well	GUTTERSEN CC32-755
Field	WELD COUNTY (NOBLE NAD 83 GRID)	API/Legal	
Facility	SEC.29-T04N-R63W	Wellbore	GUTTERSEN CC32-755 AWB
Slot	SLOT#04 GUTTERSEN CC32-755 (2486'FSL & 1524'FWL,SEC.29)		

WELLPATH COMMENTS				
MD [ft]	Inclination [°]	Azimuth [°]	TVD [ft]	Comment
78.00	0.130	322.280	78.00	First BH MWD Survey
14636.00	89.850	180.320	6619.57	Last BH MWD Survey
14694.00	89.850	180.320	6619.72	Projection to Bit