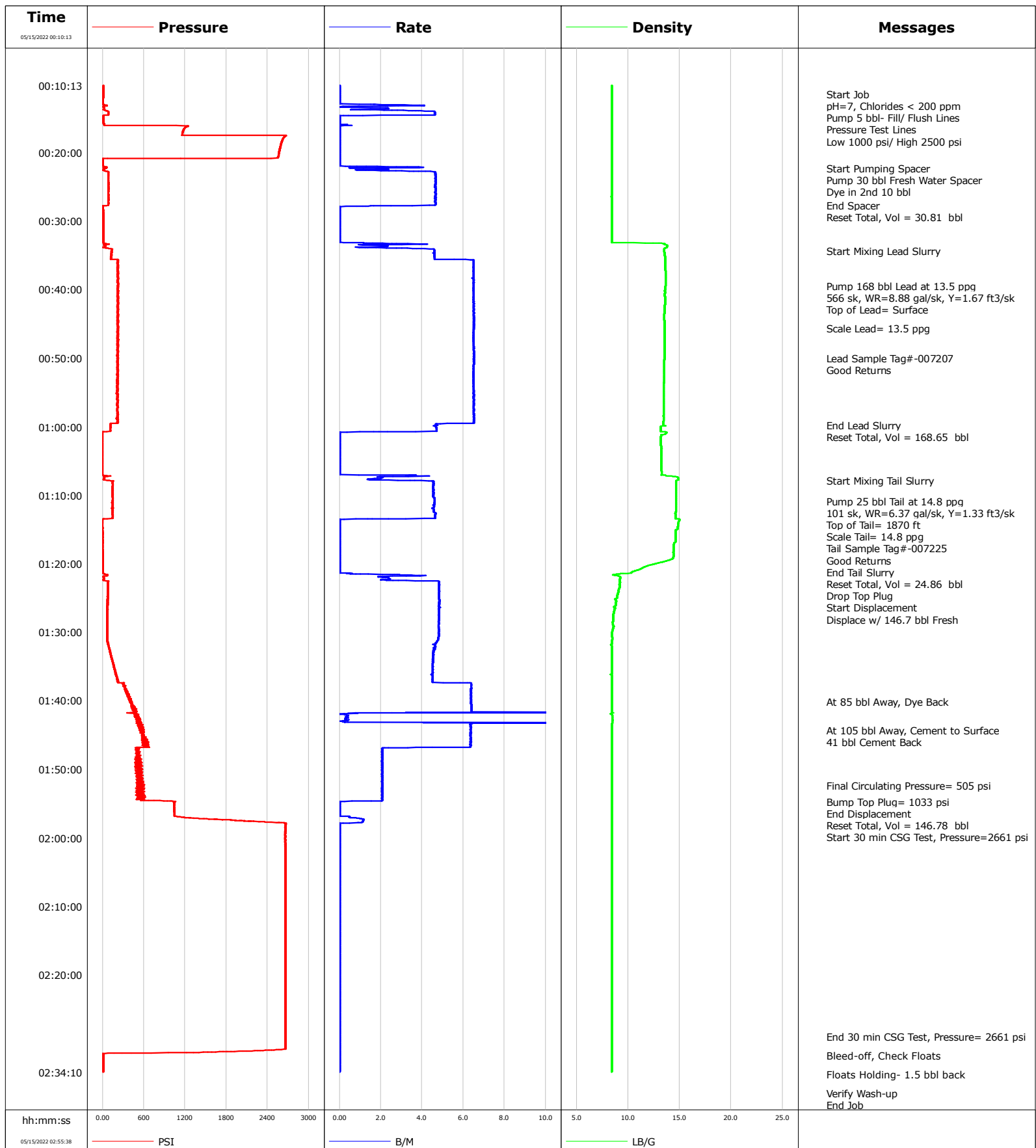


Well Guttersen CC32-755
Field Wattenberg
Engineer Thomas Bailey
Country United States

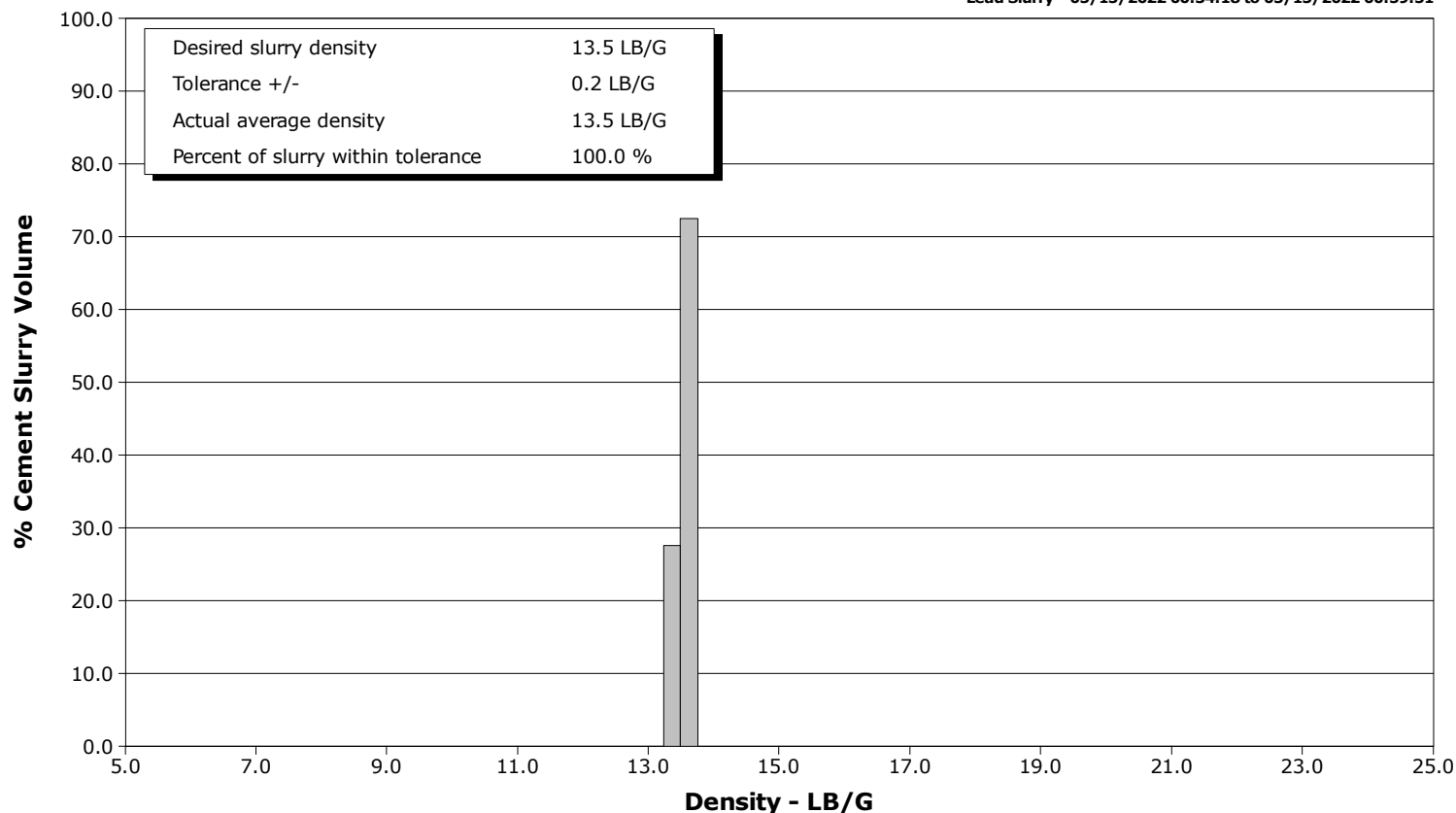
Client Chevron
SIR No. EOHC-00637
Job Type 9 5/8" Surface
Job Date 05-14-2022



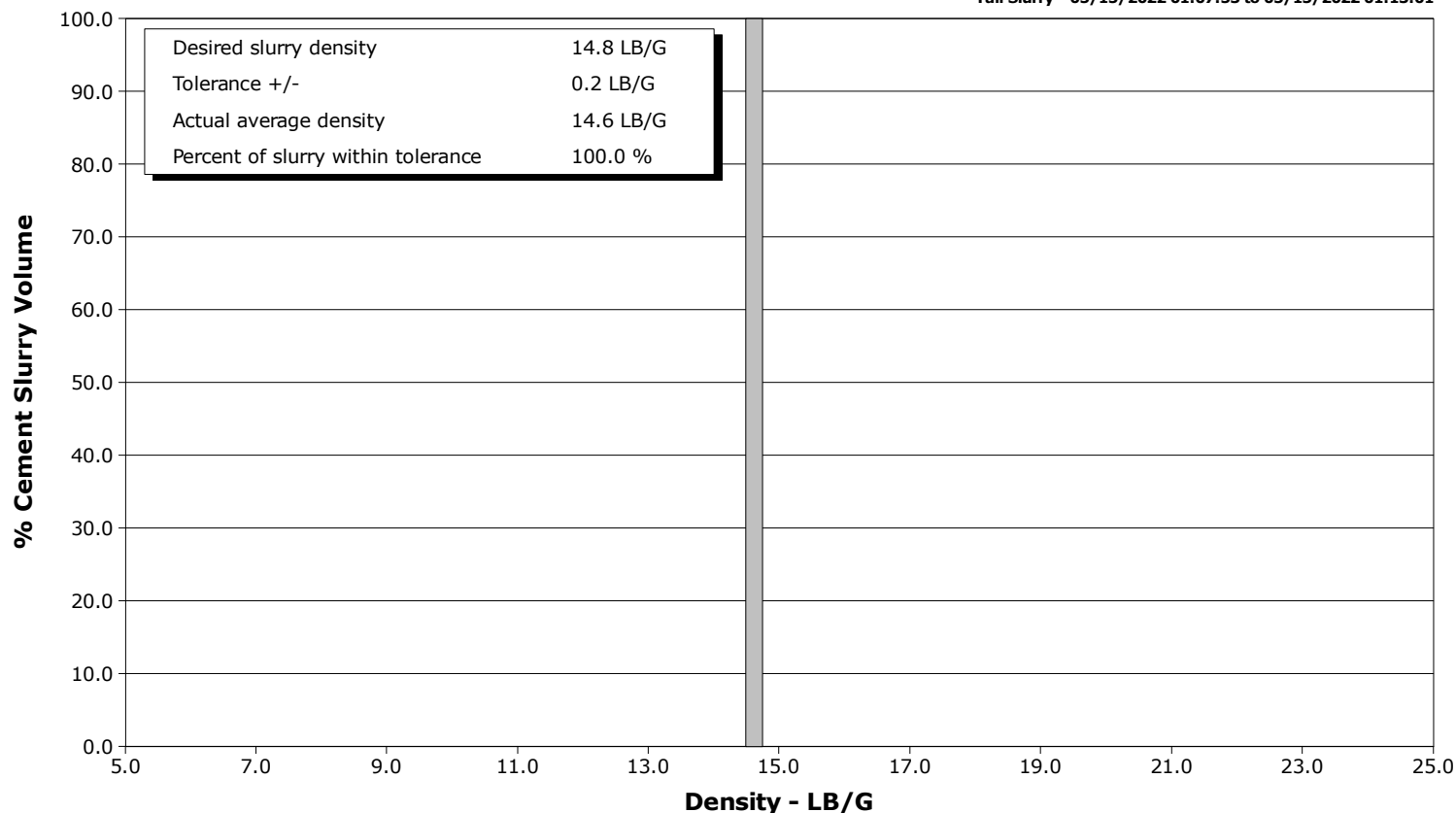
Well Guttersen CC32-755
Field Wattenberg
Engineer Thomas Bailey
Country United States

Client Chevron
SIR No. EOHC-00637
Job Type 9 5/8" Surface
Job Date 05-14-2022

Lead Slurry - 05/15/2022 00:34:18 to 05/15/2022 00:59:51



Tail Slurry - 05/15/2022 01:07:53 to 05/15/2022 01:13:01



Cementing Service Report

				Customer Chevron			Job Number EOHC-00637	
Well Guttersen CC32-755			Location (legal) HP 517			Schlumberger Location		Job Start May/14/2022
Field Wattenberg		Formation Name/Type		Deviation deg	Bit Size in	Well MD 1947.0 ft		Well TVD 1937.0 ft
County Weld		State/Province Colorado		BHP psi	BHST 120 degF	BHCT 90 degF	Pore Press. Gradient lb/gal	
Well Master 0065889195		API/UWI 05-123-49266-00-00						
Rig Name HP 517	Drilled For Oil & Gas	Service Via Land		Casing / Liner				
				Depth, ft	Size, in	Weight, lb/ft	Grade	Thread
Offshore Zone N/a	Well Class New	Well Type Development		110.0	16.0	36.94		
				1982.0	9.6	36.0		
Drilling Fluid Type Spud Mud		Max. Density 8.80 lb/gal	Plastic Viscosity cP	Tubing / Drill Pipe				
				T/D	Depth, ft	Size, in	Weight, lb/ft	Grade Thread
Service Line Cementing	Job Type 9 5/8" Surface							
Max. Allowed Tub. Press psi	Max. Allowed Ann. Press psi	WH Connection Single Cement head		Perforations / Open Hole				
				Top, ft	Bottom, ft	shot/ft	No. of Shots	Total Interval ft
				ft	ft			
				ft	ft			Diameter in
				ft	ft			
				Treat Down Casing	Displacement 146.7 bbl	Packer Type	Packer Depth ft	
				Tubing Vol. bbl	Casing Vol. 147.5 bbl	Annular Vol. 171.5 bbl	Openhole Vol. 152.5 bbl	
Casing/Tubing Secured <input type="checkbox"/>		1 Hole Vol. Circulated prior to Cement <input type="checkbox"/>		Casing Tools			Squeeze Job	
Lift Pressure 505 psi				Shoe Type Float			Squeeze Type	
Pipe Rotated <input type="checkbox"/>		Pipe Reciprocated <input type="checkbox"/>		Shoe Depth 1937.0 ft			Tool Type	
No. Centralizers 17	Top Plugs 1	Bottom Plugs		Stage Tool Type			Tool Depth ft	
Cement Head Type Single				Stage Tool Depth ft			Tail Pipe Size in	
Job Scheduled For May/14/2022 13:00	Arrived on Location May/14/2022 13:30	Leave Location May/14/2022 18:30		Collar Type Float			Tail Pipe Depth ft	
				Collar Depth 1892.0 ft			Sqz. Total Vol. bbl	
Date	Time 24-hr clock	Treating Pressure PSI	Flow Rate B/M	Density LB/G	Volume BBL	Message		
05/15/2022	00:11:30	9	0.0	8.42	0.0	Started Acquisition		
05/15/2022	00:11:32	9	0.0	8.42	0.0	pH=7, Chlorides < 200 ppm		
05/15/2022	00:12:54	5	0.0	8.42	0.0	Pump 5 bbl- Fill/ Flush Lines		
05/15/2022	00:15:40	9	0.0	8.42	5.0			
05/15/2022	00:16:09	1248	0.0	8.41	5.0	Pressure Test Lines		
05/15/2022	00:16:30	1189	0.0	8.42	5.0	Low 1000 psi/ High 2500 psi		
05/15/2022	00:19:50	2569	0.0	8.42	5.0			
05/15/2022	00:22:18	14	0.5	8.41	5.7	Start Pumping Spacer		
05/15/2022	00:23:00	85	4.6	8.41	7.7	Pump 30 bbl Fresh Water Spacer		
05/15/2022	00:23:48	86	4.6	8.41	11.4	Dye in 2nd 10 bbl		
05/15/2022	00:24:00	86	4.7	8.41	12.4			
05/15/2022	00:27:42	83	4.6	8.41	29.6	End Spacer		
05/15/2022	00:27:45	51	3.5	8.41	29.8	Reset Total, Vol = 30.81 bbl		
05/15/2022	00:28:10	6	0.0	8.42	30.1			
05/15/2022	00:32:20	8	0.0	8.42	30.1			
05/15/2022	00:34:18	141	4.6	13.51	33.1	Start Mixing Lead Slurry		
05/15/2022	00:36:30	225	6.5	13.61	44.9			
05/15/2022	00:39:28	235	6.5	13.62	64.2	Pump 168 bbl Lead at 13.5 ppg		
05/15/2022	00:39:41	224	6.5	13.59	65.6	566 sk, WR=8.88 gal/sk, Y=1.67 ft3/sk		
05/15/2022	00:40:40	216	6.5	13.56	72.0			
05/15/2022	00:41:27	219	6.5	13.58	77.0	Top of Lead= Surface		

Well Guttersen CC32-755 CC32-755			Field Wattenberg		Job Start May/14/2022		Customer Chevron		Job Number EOHC-00637	
Date	Time 24-hr clock	Treating Pressure PSI		Flow Rate B/M	Density LB/G		Volume BBL		Message	
05/15/2022	00:45:38	220		6.5	13.53		104.3		Scale Lead= 13.5 ppg	
05/15/2022	00:49:00	227		6.5	13.54		126.1			
05/15/2022	00:50:00	223		6.5	13.52		132.7		Lead Sample Tag# -007207	
05/15/2022	00:51:20	214		6.5	13.51		141.3		Good Returns	
05/15/2022	00:53:10	219		6.5	13.49		153.2			
05/15/2022	00:57:20	222		6.5	13.46		180.3			
05/15/2022	00:59:51	114		4.8	13.39		196.2		End Lead Slurry	
05/15/2022	01:00:00	116		4.6	13.17		196.9		Reset Total, Vol = 168.65 bbl	
05/15/2022	01:01:30	-4		0.0	13.17		200.5			
05/15/2022	01:05:40	-4		0.0	13.22		200.5			
05/15/2022	01:07:53	103		4.0	14.67		202.4		Start Mixing Tail Slurry	
05/15/2022	01:09:50	140		4.6	14.66		211.3			
05/15/2022	01:10:52	146		4.6	14.65		216.0		Pump 25 bbl Tail at 14.8 ppg	
05/15/2022	01:11:05	148		4.6	14.65		217.0		101 sk, WR=6.37 gal/sk, Y=1.33 ft3/sk	
05/15/2022	01:11:24	146		4.6	14.65		218.5		Top of Tail= 1870 ft	
05/15/2022	01:11:39	148		4.6	14.65		219.6		Scale Tail= 14.8 ppg	
05/15/2022	01:12:00	146		4.6	14.65		221.2		Tail Sample Tag#-007225	
05/15/2022	01:12:30	142		4.6	14.60		223.5		Good Returns	
05/15/2022	01:13:01	144		4.6	14.59		225.9		End Tail Slurry	
05/15/2022	01:13:40	-1		0.0	14.96		228.0		Reset Total, Vol = 24.86 bbl	
05/15/2022	01:14:00	-1		0.0	14.87		228.0			
05/15/2022	01:18:10	0		0.0	14.40		228.0			
05/15/2022	01:22:09	19		2.4	9.22		229.7		Drop Top Plug	
05/15/2022	01:22:10	19		2.4	9.22		229.7		Start Displacement	
05/15/2022	01:22:20	12		2.0	9.21		230.1			
05/15/2022	01:24:43	73		4.8	8.95		241.2		Displace w/ 146.7 bbl Fresh	
05/15/2022	01:26:30	70		4.8	8.76		249.8			
05/15/2022	01:30:40	68		4.8	8.43		269.9			
05/15/2022	01:34:50	161		4.5	8.42		289.1			
05/15/2022	01:39:00	348		6.4	8.42		310.9			
05/15/2022	01:40:06	399		6.4	8.42		317.9		At 85 bbl Away, Dye Back	
05/15/2022	01:43:10	520		13.1	8.49		337.8			
05/15/2022	01:44:16	577		6.3	8.42		344.8		At 105 bbl Away, Cement to Surface	
05/15/2022	01:45:00	603		6.4	8.42		349.5		41 bbl Cement Back	
05/15/2022	01:47:20	515		2.1	8.42		362.1			
05/15/2022	01:51:30	572		2.1	8.42		370.7			
05/15/2022	01:52:21	566		2.1	8.42		372.4		Final Circulating Pressure= 505 psi	
05/15/2022	01:54:40	1054		0.3	8.42		377.2		Bump Top Plug= 1033 psi	
05/15/2022	01:54:45	1039		0.0	8.42		377.2		End Displacement	
05/15/2022	01:55:00	1047		0.0	8.42		377.2		Reset Total, Vol = 146.78 bbl	
05/15/2022	01:55:40	1039		0.0	8.42		377.2			
05/15/2022	01:58:09	2661		0.0	8.42		378.1		Start 30 min CSG Test, Pressure=2661 psi	
05/15/2022	01:59:50	2655		0.0	8.42		378.1			
05/15/2022	02:04:00	2658		0.0	8.42		378.1			
05/15/2022	02:08:10	2659		0.0	8.43		378.1			
05/15/2022	02:12:20	2660		0.0	8.42		378.1			
05/15/2022	02:16:30	2661		0.0	8.42		378.1			
05/15/2022	02:24:50	2660		0.0	8.42		378.1			
05/15/2022	02:29:00	2660		0.0	8.42		378.1		End 30 min CSG Test, Pressure= 2661 psi	
05/15/2022	02:31:47	10		0.0	8.42		378.1		Verify Wash-up	

Well Guttersen CC32-755	Field Wattenberg	Job Start May/14/2022	Customer Chevron	Job Number EOHC-00637
-----------------------------------	----------------------------	---------------------------------	----------------------------	---------------------------------

Post Job Summary

Average Pump Rates, bbl/min					Volume of Fluid Injected, bbl			
Slurry 4.9	N2	Mud	Maximum Rate 6.7	Total Slurry 192.0	Mud 0.0	Spacer 30.0	N2	
Treating Pressure Summary, psi					Breakdown Fluid			
Maximum 2674	Final 10	Average 781	Bump Plug to 1033	Breakdown	Type	Volume bbl	Density lb/gal	
Avg. N2 Percent %	Designed Slurry Volume 192.0 bbl	Displacement 146.7 bbl	Mix Water Temp 61 degF	Cement Circulated to Surface? <input checked="" type="checkbox"/>	Volume 41.0 bbl			
				Washed Thru Perfs <input type="checkbox"/>	To ft			
Customer or Authorized Representative Mike Duncan			Schlumberger Supervisor Thomas Bailey		Circulation Lost <input type="checkbox"/>	Job Completed <input checked="" type="checkbox"/>		
					-	-		