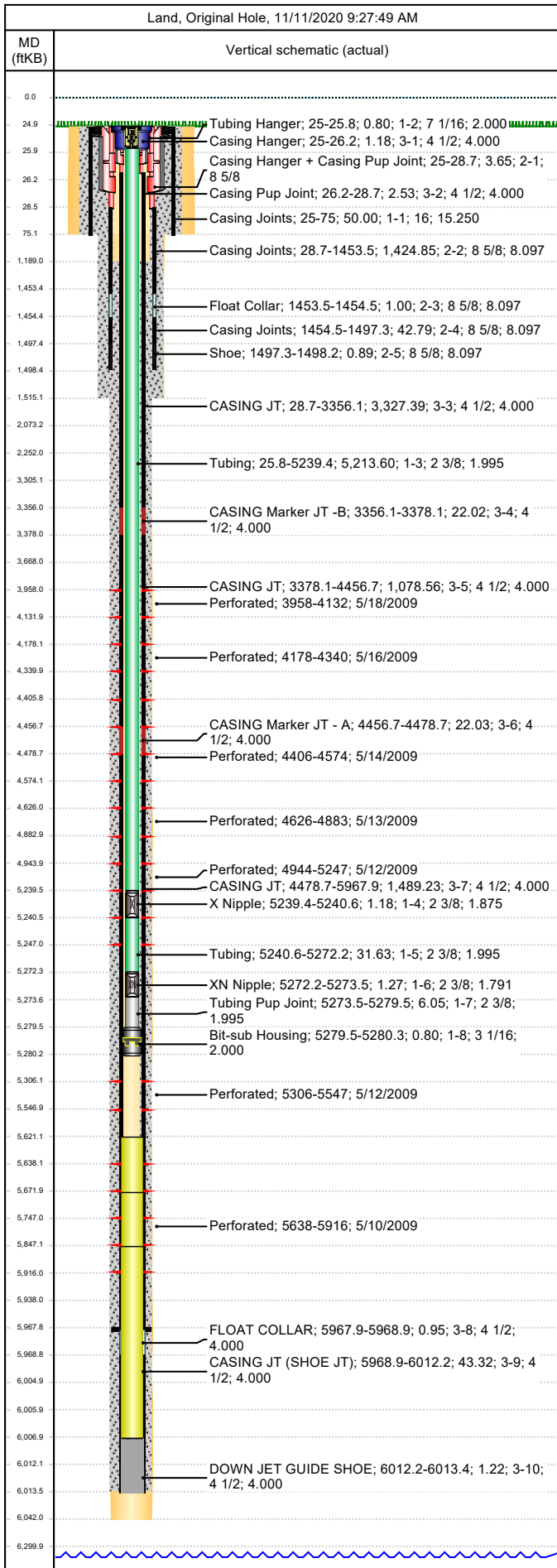




# Wellbore Schematic

Well Name SKR-598-26-AV-21	Lease Chevron USA	Field Name Skinner Ridge	Business Unit Mid-Continent
-------------------------------	----------------------	-----------------------------	--------------------------------



Job Details									
Job Category				Start Date		Rig/Unit End Date			
Well Services				3/8/2013		3/8/2013			
Casing Strings									
Csg Des	OD (in)	Wt/Len (lb/ft)	Grade		Top Thread	Set Depth (MD) (ftKB)			
Conductor	16					75			
Surface	8 5/8	24.00	K-55			1498.2			
Production Casing	4 1/2	11.60	N-80			6013.4			
Tubing Strings									
Tubing - Production set at 5,280.3ftKB on 8/26/2009 12:00									
Tubing Description				Run Date		String Length (ft)		Set Depth (MD) (ftKB)	
Tubing - Production				8/26/2009		5,280.33		5,280.3	
Item Des		Jts	OD (in)	Wt (lb/ft)	Grade	Len (ft)		Btm (ftKB)	
KBGL						25.00		25.0	
Tubing Hanger			7 1/16			0.80		25.8	
Tubing		165	2 3/8	4.70	L-80	5,213.60		5,239.4	
X Nipple			2 3/8			1.18		5,240.6	
Tubing		1	2 3/8	4.70	L-80	31.63		5,272.2	
XN Nipple			2 3/8			1.27		5,273.5	
Tubing Pup Joint			2 3/8	4.70	L-80	6.05		5,279.5	
Bit-sub Housing			3 1/16			0.80		5,280.3	
Tubing Landed @						0.00		5,280.3	
Perforations									
Date	Top (ftKB)	Btm (ftKB)	Shot Dens (shots/ft)	Entered Shot Total	Linked Zone				
5/18/2009	3,958.0	4,132.0	3.0	30	Mesa Verde - WMFK - Williams Fork, Original Hole				
5/16/2009	4,178.0	4,340.0	3.0	27	Mesa Verde - WMFK - Williams Fork, Original Hole				
5/14/2009	4,406.0	4,574.0	3.0	24	Mesa Verde - WMFK - Williams Fork, Original Hole				
5/13/2009	4,626.0	4,883.0	3.0	30	Mesa Verde - WMFK - Williams Fork, Original Hole				
5/12/2009	4,944.0	5,247.0	3.0	27	Mesa Verde - WMFK - Williams Fork, Original Hole				
5/12/2009	5,306.0	5,547.0	3.0	24	Mesa Verde - WMFK - Williams Fork, Original Hole				
5/10/2009	5,638.0	5,916.0	3.0	30	Mesa Verde - WMFK - Williams Fork, Original Hole				
Other Strings									
Run Date	Pull Date	Set Depth (ftKB)		Com					
Other In Hole									
Des	Top (ftKB)	Btm (ftKB)	Run Date	Pull Date	Com				
Bear Claw Solid Plug	3,920.0	3,921.0	6/11/2009	8/25/2009	Solid bridge plug				
Bear Claw Frac Plug	4,154.0	4,156.0	5/18/2009	8/25/2009	Bio Ball composite, flow thru, frac, bridge plug				
Bear Claw Frac Plug	4,372.0	4,374.0	5/16/2009	8/25/2009	Bio Ball composite, flow thru, frac, bridge plug				
Bear Claw Frac Plug	4,600.0	4,602.0	5/14/2009	8/25/2009	Bio Ball composite, flow thru, frac, bridge plug				
Bear Claw Frac Plug	4,912.0	4,914.0	5/13/2009	8/25/2009	Bio Ball composite, flow thru, frac, bridge plug				
Bumper Spring	5,238.4	5,239.4	3/1/2010	3/8/2013					
Bear Claw Frac Plug	5,279.0	5,281.0	5/12/2009	8/26/2009	Bio Ball composite, flow thru, frac, bridge plug				
Bear Claw Frac Plug	5,579.0	5,581.0	5/12/2009	8/26/2009	Bio Ball composite, flow thru, frac, bridge plug				
Fill Tag, 3/24/2016	5,621.0	5,672.0	3/24/2016						
Fill, 3/8/2013	5,672.0	5,847.0	3/8/2013						
Fill, 3/1/2010	5,847.0	6,007.0	3/1/2010		Tag w/ slick-line 3/1/10				
Pumped off	6,005.0	6,005.8	8/26/2009						
Mill	6,005.8	6,007.0	8/26/2009						
PBTD	6,007.0	6,013.4	8/26/2009						