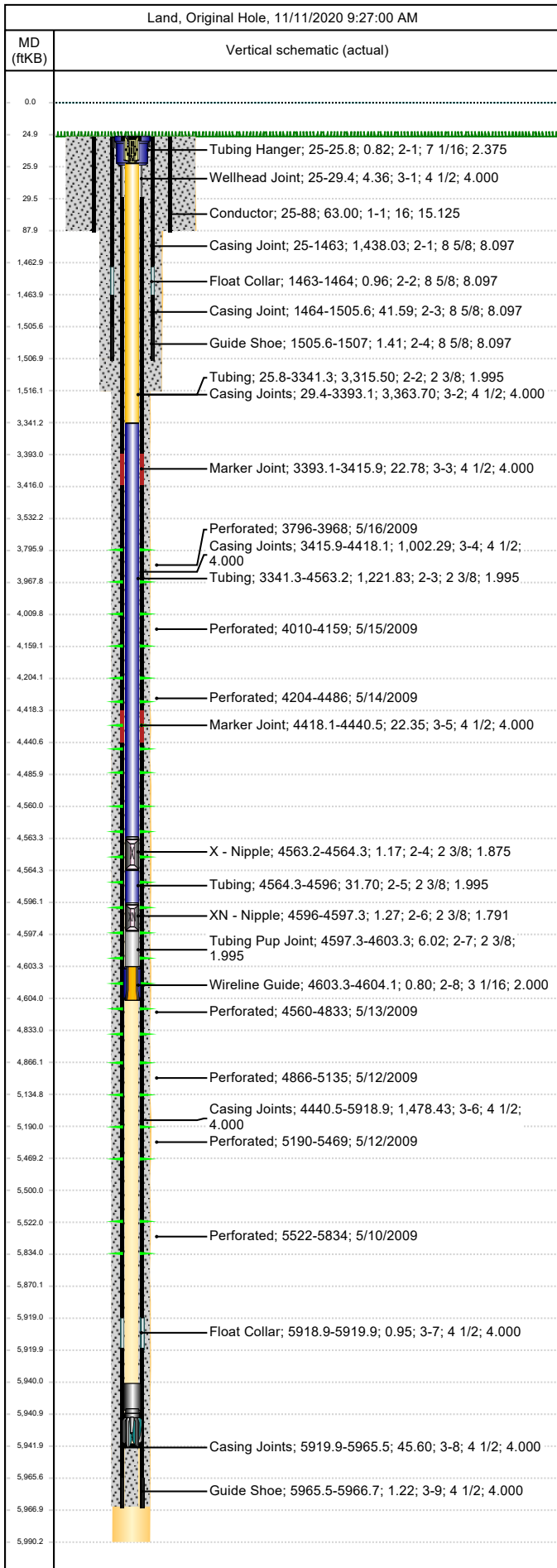




Wellbore Schematic

Well Name SKR-598-26-AV-18	Lease Chevron USA	Field Name Skinner Ridge	Business Unit Mid-Continent
-------------------------------	----------------------	-----------------------------	--------------------------------

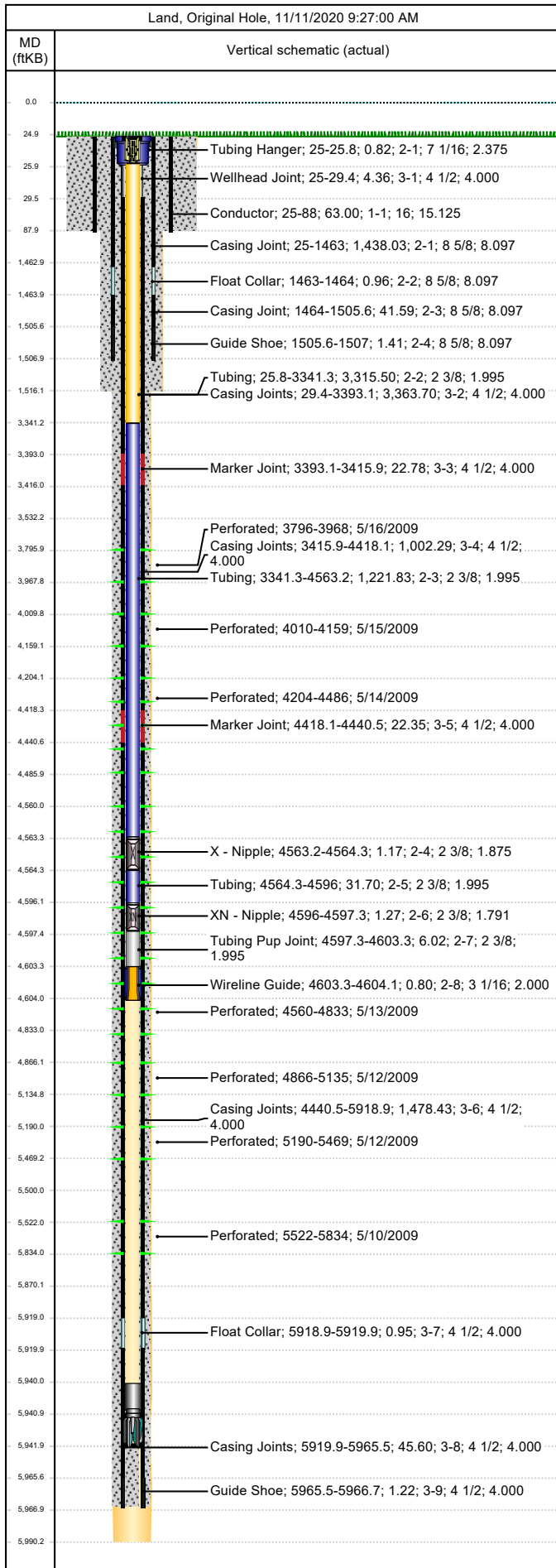


Job Details							
Job Category				Start Date		Rig/Unit End Date	
Major Rig Work Over (MRWO)				6/15/2016		7/5/2016	
Casing Strings							
Csg Des	OD (in)	Wt/Len (lb/ft)	Grade	Top Thread	Set Depth (MD) (ftKB)		
Conductor	16	36.95	Unknown		88		
Surface	8 5/8	24.00	K-55	STC	1507		
Production Casing	4 1/2	11.60	N-80		5966.7		
Tubing Strings							
Tubing - Production set at 4,604.1ftKB on 6/16/2016 12:00							
Tubing Description			Run Date		String Length (ft)		Set Depth (MD) (ftKB)
Tubing - Production			6/16/2016		4,579.11		4,604.1
Item Des	Jts	OD (in)	Wt (lb/ft)	Grade	Len (ft)	Btm (ftKB)	
Tubing Hanger	1	7 1/16			0.82	25.8	
Tubing	106	2 3/8	4.70	L-80	3,315.50	3,341.3	
Tubing	39	2 3/8	4.70	L-80	1,221.83	4,563.2	
X - Nipple	1	2 3/8			1.17	4,564.3	
Tubing	1	2 3/8	4.70	L-80	31.70	4,596.0	
XN - Nipple	1	2 3/8			1.27	4,597.3	
Tubing Pup Joint	1	2 3/8	4.70	L-80	6.02	4,603.3	
Wireline Guide	1	3 1/16			0.80	4,604.1	
Perforations							
Date	Top (ftKB)	Btm (ftKB)	Shot Dens (shots/ft)	Entered Shot Total	Linked Zone		
5/16/2009	3,796.0	3,968.0	3.0	27	Mesa Verde - WMFK - Williams Fork, Original Hole		
5/15/2009	4,010.0	4,159.0	3.0	27	Mesa Verde - WMFK - Williams Fork, Original Hole		
5/14/2009	4,204.0	4,486.0	3.0	30	Mesa Verde - WMFK - Williams Fork, Original Hole		
5/13/2009	4,560.0	4,833.0	3.0	30	Mesa Verde - WMFK - Williams Fork, Original Hole		
5/12/2009	4,866.0	5,135.0	3.0	30	Mesa Verde - WMFK - Williams Fork, Original Hole		
5/12/2009	5,190.0	5,469.0	3.0	27	Mesa Verde - WMFK - Williams Fork, Original Hole		
5/10/2009	5,522.0	5,834.0	3.0	27	Mesa Verde - WMFK - Cameo Coal, Original Hole		
Other Strings							
Run Date	Pull Date	Set Depth (ftKB)	Com				
Other In Hole							
Des	Top (ftKB)	Btm (ftKB)	Run Date	Pull Date	Com		
Bear Claw Solid Plug	3,760.0	3,761.0	6/11/2009	8/14/2009	Solid bridge plug		
Bear Claw Frac Plug	3,988.0	3,990.0	5/15/2009	8/14/2009	Bio Ball composite, flow thru, frac, bridge plug		
Bear Claw Frac Plug	4,177.0	4,179.0	5/15/2009	8/14/2009	Bio Ball composite, flow thru, frac, bridge plug		
Bear Claw Frac Plug	4,510.0	4,512.0	5/14/2009	8/14/2009	Bio Ball composite, flow thru, frac, bridge plug		
Bear Claw Frac Plug	4,858.0	4,860.0	5/13/2009	8/15/2009	Bio Ball composite, flow thru, frac, bridge plug		
Fish, Slickline Tools & Plunger	4,865.0	4,883.0	6/13/2013	6/16/2016	~ 40' .092" slickline Rope Socket 10' 1.5" weight bars 1.5" Spang Jar RB Pulling Tool Plunger		
Tubing Plunger	4,953.5	4,954.5	3/19/2010	3/6/2013			
Bumper Spring	4,954.5	4,955.5	3/19/2010	6/16/2016			
Bear Claw Frac Plug	5,161.0	5,163.0	5/12/2009	8/15/2009	Bio Ball composite, flow thru, frac, bridge plug		
Fill, 3/6/2013	5,448.0	5,649.0	3/6/2013	6/17/2016	Tag w/ slickline, 3/6/2013		
Bear Claw Frac Plug	5,489.0	5,491.0	5/12/2009	8/15/2009	Bio Ball composite, flow thru, frac, bridge plug		
Fill, 3/19/2010	5,649.0	5,940.0	3/19/2010	6/17/2016	Tag w/ slickline, 3/19/10		



Wellbore Schematic

Well Name SKR-598-26-AV-18	Lease Chevron USA	Field Name Skinner Ridge	Business Unit Mid-Continent
-------------------------------	----------------------	-----------------------------	--------------------------------



Other In Hole					
Des	Top (ftKB)	Btm (ftKB)	Run Date	Pull Date	Com
Pumped off	5,940.0	5,940.8	8/17/2009		
Mill	5,940.8	5,942.0	8/17/2009		