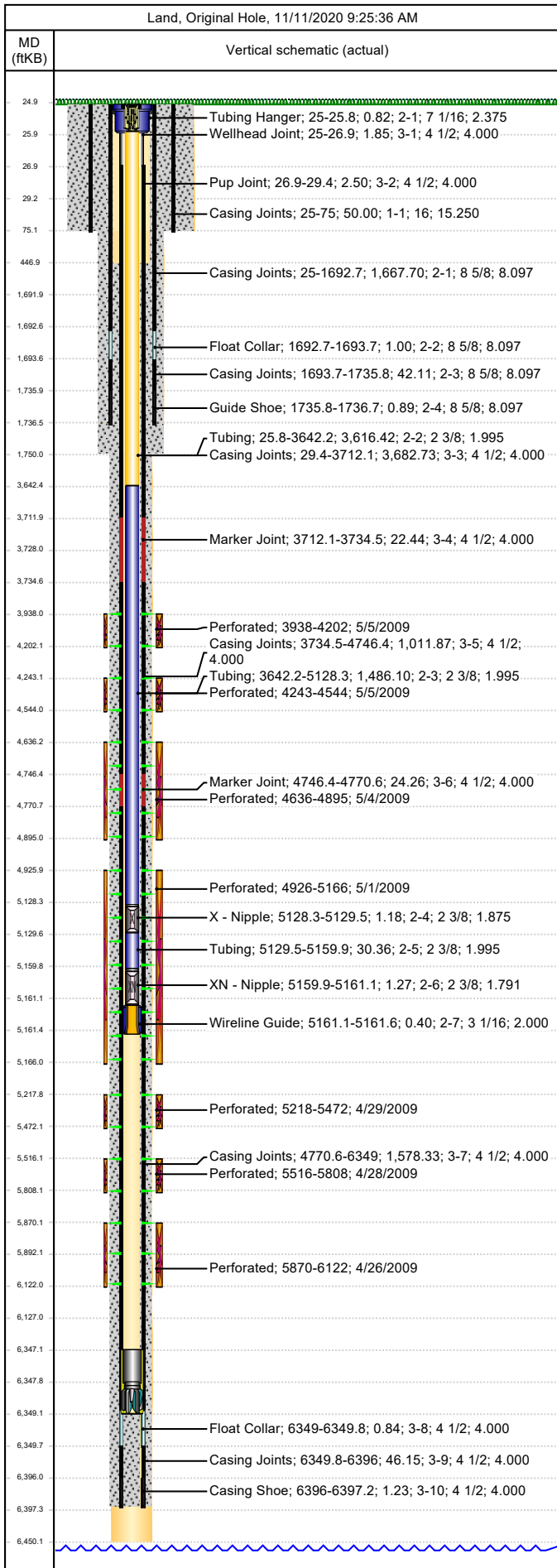




# Wellbore Schematic

Well Name SKR-598-26-AV-05	Lease Chevron USA	Field Name Skinner Ridge	Business Unit Mid-Continent
-------------------------------	----------------------	-----------------------------	--------------------------------



Job Details							
Job Category			Start Date		Rig/Unit End Date		
Well Services			7/5/2016		7/12/2016		
Casing Strings							
Csg Des	OD (in)	Wt/Len (lb/ft)	Grade		Top Thread	Set Depth (MD) (ftKB)	
Conductor	16	65.00	H-40			75	
Surface	8 5/8	24.00	K-55			1736.7	
Production Casing	4 1/2	11.60	N-80			6397.2	
Tubing Strings							
Tubing - Production set at 5,161.6ftKB on 6/10/2016 09:00							
Tubing Description		Run Date		String Length (ft)		Set Depth (MD) (ftKB)	
Tubing - Production		6/10/2016		5,136.55		5,161.6	
Item Des	Jts	OD (in)	Wt (lb/ft)	Grade	Len (ft)	Btm (ftKB)	
Tubing Hanger	1	7 1/16			0.82	25.8	
Tubing	115	2 3/8	4.70	L-80	3,616.42	3,642.2	
Tubing	49	2 3/8	4.70	L-80	1,486.10	5,128.3	
X - Nipple	1	2 3/8			1.18	5,129.5	
Tubing	1	2 3/8	4.70	L-80	30.36	5,159.9	
XN - Nipple	1	2 3/8			1.27	5,161.2	
Wireline Guide	1	3 1/16			0.40	5,161.6	
Perforations							
Date	Top (ftKB)	Btm (ftKB)	Shot Dens (shots/ft)	Entered Shot Total	Linked Zone		
5/5/2009	3,938.0	4,202.0	3.0	30	Mesa Verde - WMFK - Williams Fork, Original Hole		
5/5/2009	4,243.0	4,544.0	3.0	30	Mesa Verde - WMFK - Williams Fork, Original Hole		
5/4/2009	4,636.0	4,895.0	3.0	30	Mesa Verde - WMFK - Williams Fork, Original Hole		
5/1/2009	4,926.0	5,166.0	3.0	24	Mesa Verde - WMFK - Williams Fork, Original Hole		
4/29/2009	5,218.0	5,472.0	3.0	27	Mesa Verde - WMFK - Williams Fork, Original Hole		
4/28/2009	5,516.0	5,808.0	3.0	30	Mesa Verde - WMFK - Williams Fork, Original Hole		
4/26/2009	5,870.0	6,122.0	3.0	30	Mesa Verde - WMFK - Cameo Coal, Original Hole		
Other Strings							
Run Date	Pull Date	Set Depth (ftKB)	Com				
Other In Hole							
Des	Top (ftKB)	Btm (ftKB)	Run Date	Pull Date	Com		
Bear Claw Frac Plug	3,907.0	3,909.0	5/22/2009	6/10/2009	Solid composite plug.		
Bear Claw Frac Plug	4,220.0	4,222.0	5/5/2009	6/10/2009	Bio Ball composite, flow thru, frac, bridge plug		
Bear Claw Frac Plug	4,587.0	4,589.0	5/5/2009	6/10/2009	Bio Ball composite, flow thru, frac, bridge plug		
Bear Claw Frac Plug	4,916.0	4,918.0	5/4/2009	6/10/2009	Bio Ball composite, flow thru, frac, bridge plug		
Bear Claw Frac Plug	5,199.0	5,201.0	5/1/2009	6/10/2009	Bio Ball composite, flow thru, frac, bridge plug		
Bear Claw Frac Plug	5,493.0	5,495.0	4/29/2009	6/11/2009	Bio Ball composite, flow thru, frac, bridge plug		
Bear Claw Frac Plug	5,824.0	5,826.0	4/28/2009	6/11/2009	Bio Ball composite, flow thru, frac, bridge plug		
Fill Tag, 3/24/2016	5,825.0	5,979.0	3/24/2016	6/9/2016			
Fill, 6/9/16	6,347.0	6,349.0	6/11/2009		Tag fill w/ slick-line, 2/23/10		
Pumped off	6,347.0	6,347.8	6/11/2009				
Mill	6,347.8	6,349.0	6/11/2009				