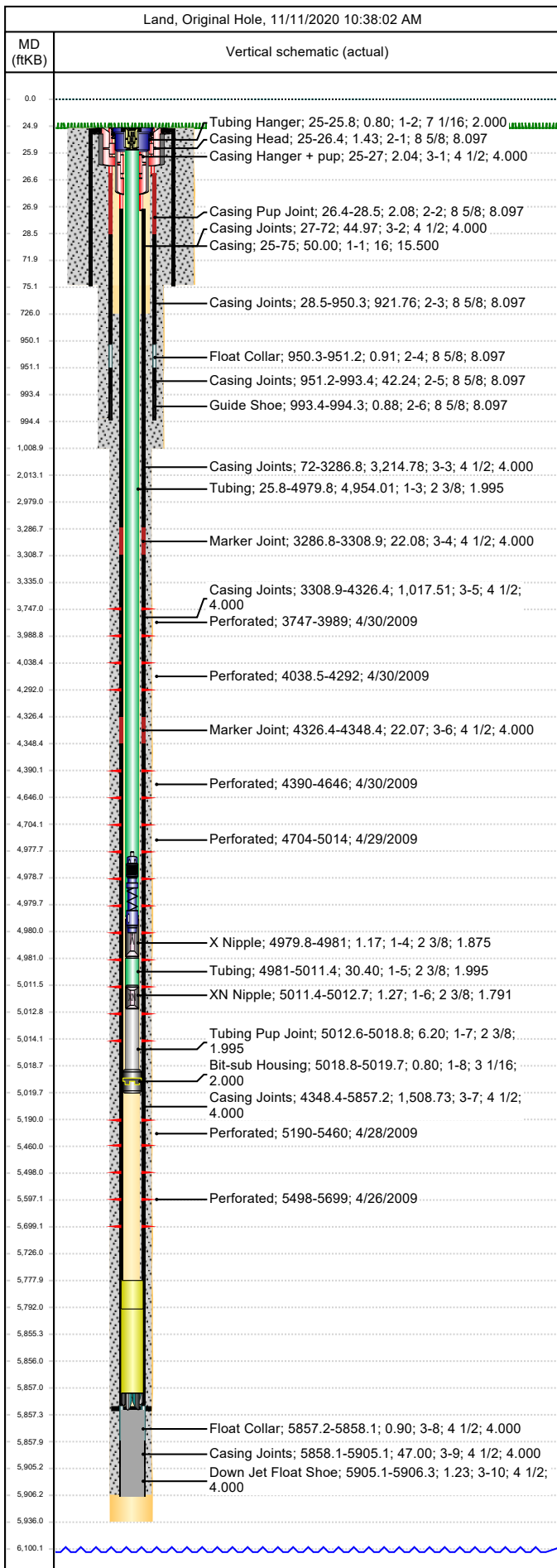




Wellbore Schematic

Well Name SKR-598-26-AV-04	Lease Chevron USA	Field Name Skinner Ridge	Business Unit Mid-Continent
-------------------------------	----------------------	-----------------------------	--------------------------------

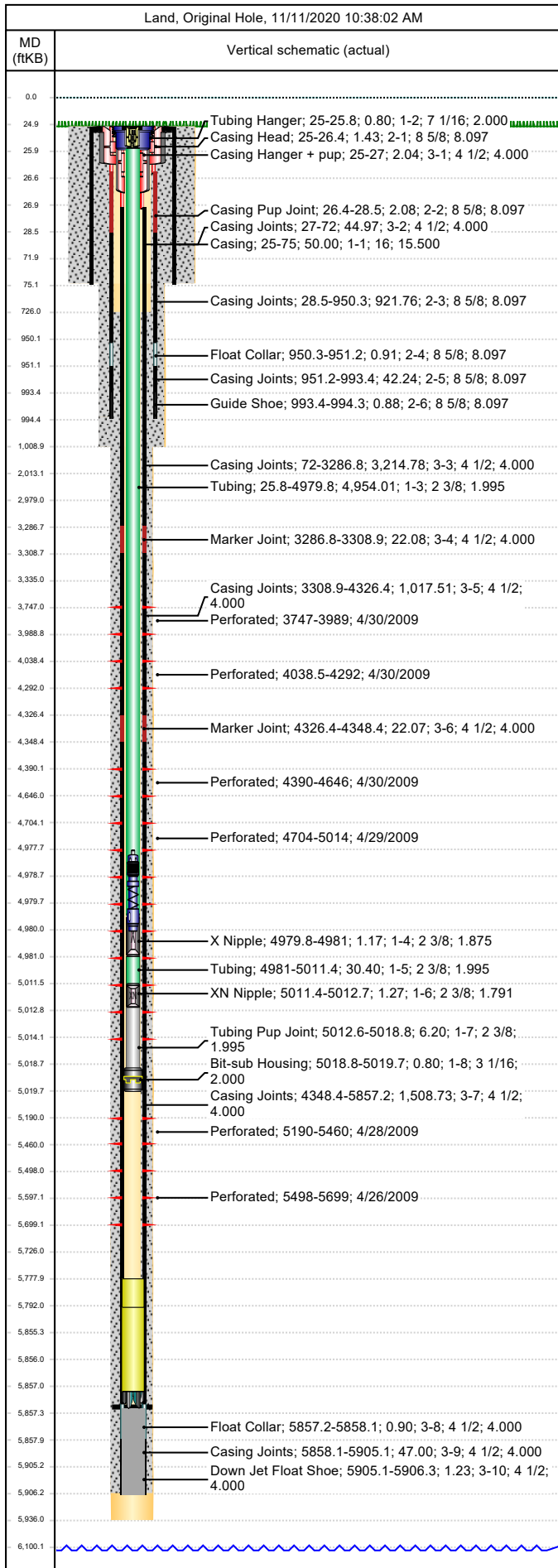


Job Details						
Job Category			Start Date		Rig/Unit End Date	
Well Services			4/23/2014		4/23/2014	
Casing Strings						
Csg Des	OD (in)	Wt/Len (lb/ft)	Grade	Top Thread	Set Depth (MD) (ftKB)	
Conductor	16				75	
Surface	8 5/8	24.00	K-55	ST&C	994.3	
Production Casing	4 1/2	11.60	N-80		5906.3	
Tubing Strings						
Tubing - Production set at 5,019.7ftKB on 7/21/2009 16:00						
Tubing Description			Run Date	String Length (ft)	Set Depth (MD) (ftKB)	
Tubing - Production			7/21/2009	5,019.65	5,019.7	
Item Des	Jts	OD (in)	Wt (lb/ft)	Grade	Len (ft)	Btm (ftKB)
KBGL					25.00	25.0
Tubing Hanger		7 1/16			0.80	25.8
Tubing	167	2 3/8	4.70	L-80	4,954.01	4,979.8
X Nipple		2 3/8			1.17	4,981.0
Tubing	1	2 3/8	4.70	L-80	30.40	5,011.4
XN Nipple		2 3/8			1.27	5,012.7
Tubing Pup Joint		2 3/8	4.70	L-80	6.20	5,018.9
Bit-sub Housing		3 1/16			0.80	5,019.7
Tubing Landed @						5,019.7
Perforations						
Date	Top (ftKB)	Btm (ftKB)	Shot Dens (shots/ft)	Entered Shot Total	Linked Zone	
4/30/2009	3,747.0	3,989.0	3.0	24	Mesa Verde - WMFK - Williams Fork, Original Hole	
4/30/2009	4,038.5	4,292.0	3.0	27	Mesa Verde - WMFK - Williams Fork, Original Hole	
4/30/2009	4,390.0	4,646.0	3.0	27	Mesa Verde - WMFK - Williams Fork, Original Hole	
4/29/2009	4,704.0	5,014.0	3.0	27	Mesa Verde - WMFK - Williams Fork, Original Hole	
4/28/2009	5,190.0	5,460.0	3.0	24	Mesa Verde - WMFK - Williams Fork, Original Hole	
4/26/2009	5,498.0	5,699.0	3.0	27	Mesa Verde - WMFK - Williams Fork, Original Hole	
Other Strings						
Run Date	Pull Date	Set Depth (ftKB)	Com			
Other In Hole						
Des	Top (ftKB)	Btm (ftKB)	Run Date	Pull Date	Com	
Bear Claw Solid Plug	3,490.0	3,492.0	5/24/2009	7/20/2009	Solid composite plug.	
Bear Claw Frac Plug	3,509.0	3,511.0	5/22/2009	7/20/2009	Solid composite plug.	
Bear Claw Frac Plug	3,596.0	3,598.0	4/30/2009	7/20/2009	Bio Ball composite, flow thru, frac, bridge plug. Plug was set when perf guns were lost down hole. Plug was planned to be set @ 4002'.	
Bear Claw Frac Plug	4,349.0	4,350.0	4/30/2009	7/20/2009	Bio Ball composite, flow thru, frac, bridge plug	
Bear Claw Frac Plug	4,674.0	4,676.0	4/30/2009	7/20/2009	Bio Ball composite, flow thru, frac, bridge plug	
Tubing Plunger	4,977.6	4,978.6	3/17/2010	4/23/2014		
Tubing Plunger, 4/23/2014	4,977.6	4,978.6	4/23/2014			
Bumper Spring	4,978.6	4,979.6	3/17/2010	4/23/2014		
Bumper Spring, 4/23/2014	4,978.6	4,980.0	4/23/2014			
Bear Claw Frac Plug	5,101.0	5,103.0	4/29/2009	7/20/2009	Bio Ball composite, flow thru, frac, bridge plug	
Bear Claw Frac Plug	5,474.0	5,476.0	4/28/2009	7/20/2009	Bio Ball composite, flow thru, frac, bridge plug	



Wellbore Schematic

Well Name SKR-598-26-AV-04	Lease Chevron USA	Field Name Skinner Ridge	Business Unit Mid-Continent
-------------------------------	----------------------	-----------------------------	--------------------------------



Other In Hole					
Des	Top (ftKB)	Btm (ftKB)	Run Date	Pull Date	Com
Fill (Sand / Mud / Debris)	5,767.0		7/18/2019		
Fill Tag, 4/23/2014	5,778.0	5,792.0	4/23/2014		Tag w/ slickline 4/23/2014
Fill, 3/17/2010	5,792.0	5,857.0	3/17/2010		Tag w/ slickline 3/17/10
Pumped off	5,855.2	5,856.0	7/21/2009		
Mill	5,856.0	5,857.2	7/21/2009		
PBTD	5,857.2	5,906.2	8/17/2007		